

Upper Cover Kits [002-2072-0x]



Caution

Verify frame top cover and frame covers do not contact the carriage casting.

Note

Torque wrench should be capable of 33 ft-lbs (44.7 Nm).

Applies to Cover Kits:

- 002-2072-00 (Frame Cover)
- 002-2072-01 (Frame Top Cover)
- 002-2072-02 (Guard Mount)
- 002-2072-03 (Cover Mount)

Special Tools:

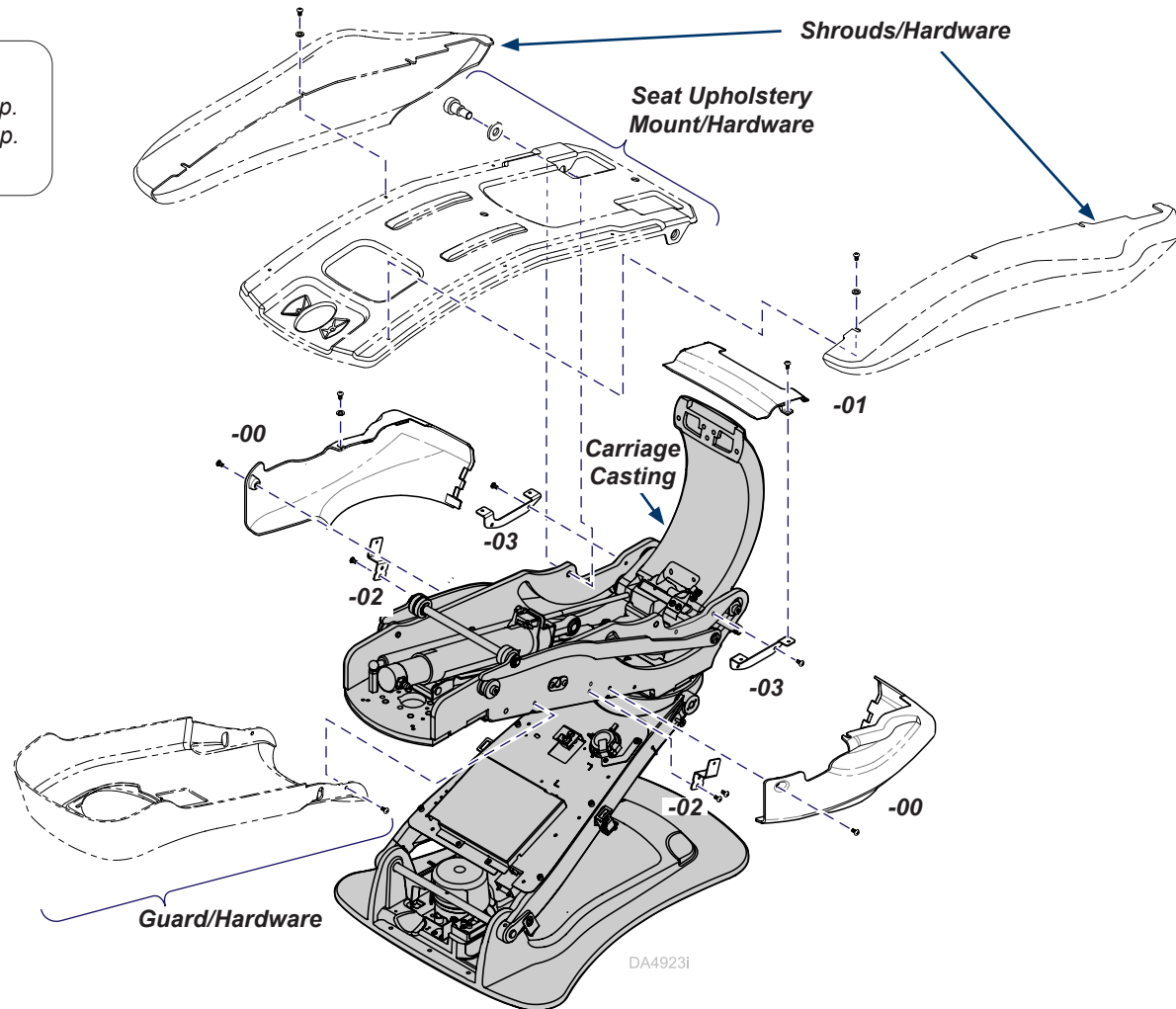
Torque wrench

Language of origin: English

Notes

For -00 kit, complete Steps 1-5A and last step.
 For -01 kit, complete Steps 1-5B and last step.
 For -02 or -03 kit, complete all steps.

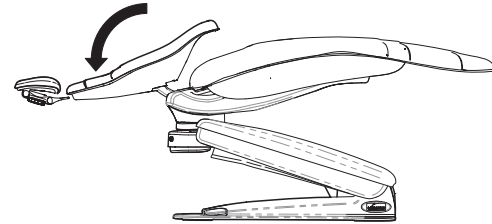
Step 1: Inspect components
 (See back page).



DA4923i

Step 2: Position chair.

- A) Move the chair back to FULL DOWN position.
- B) Raise / lower the chair to a comfortable working height.

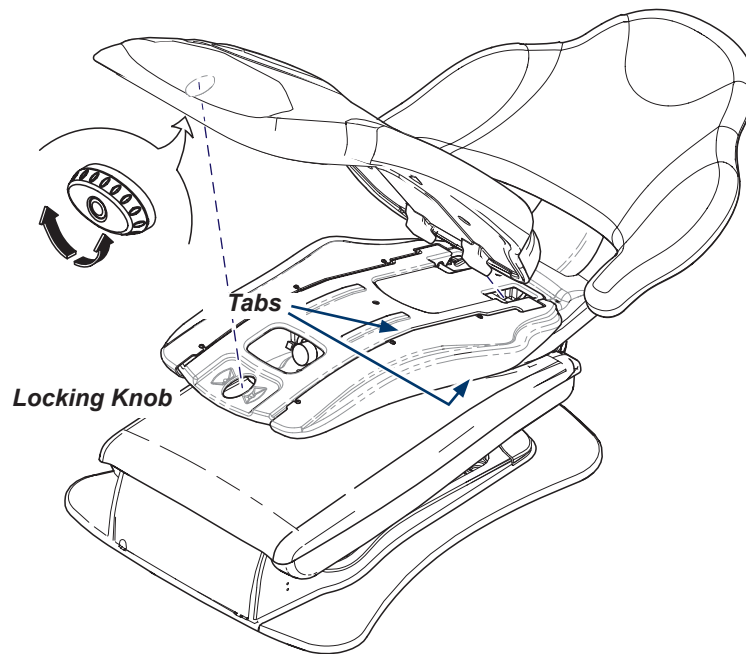


WARNING

Always disconnect the power source before removing any covers. Failure to do so may result in personal injury.

Step 3: Remove seat upholstery.

- A) Disconnect power source.
- B) Rotate seat locking knob.
- C) Lift seat upholstery, then pull to release tabs from frame.



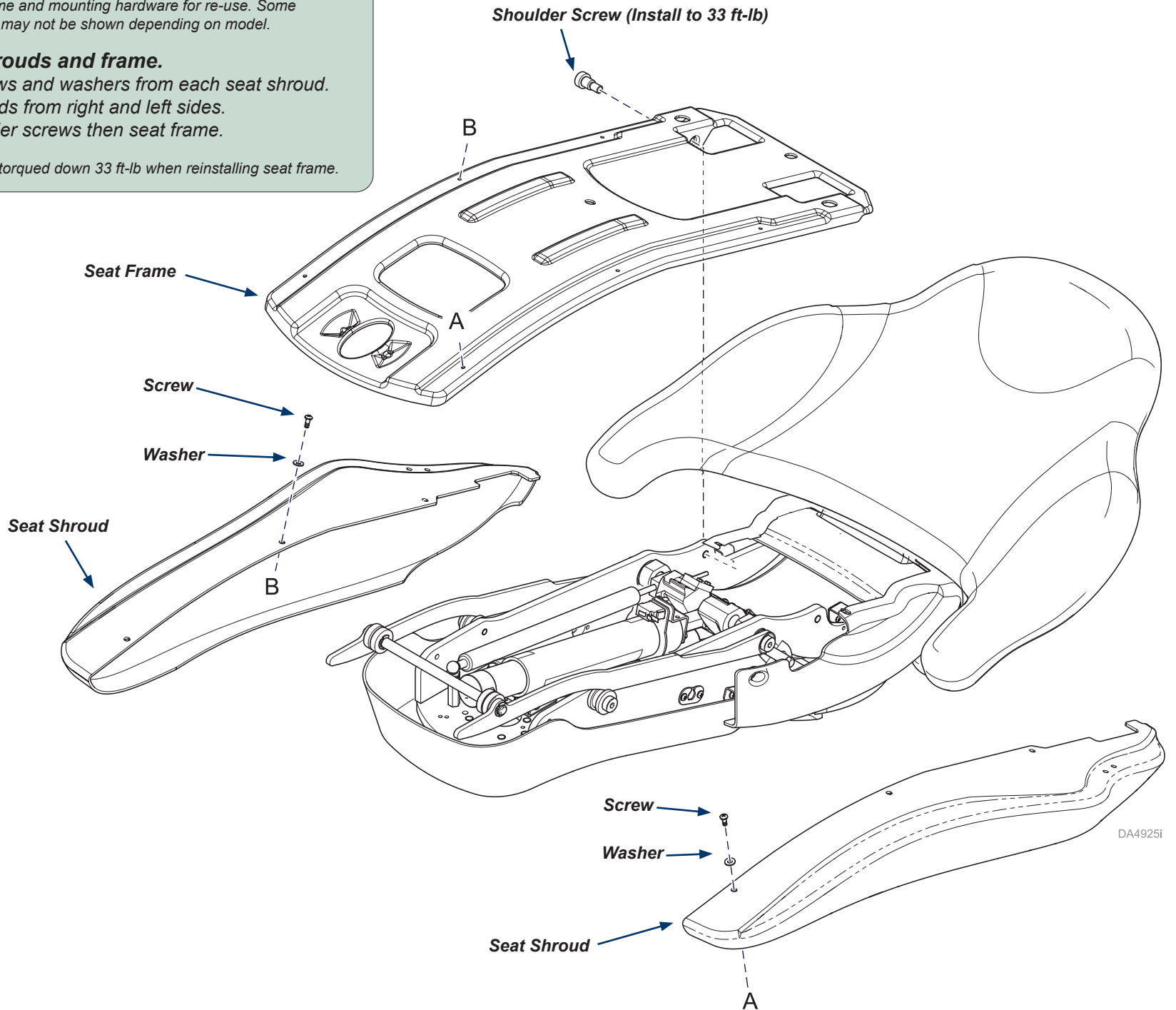
DA4596i

Note: Retain all shrouds, frame and mounting hardware for re-use. Some mounting components may not be shown depending on model.

Step 4: Remove shrouds and frame.

- A) Remove three screws and washers from each seat shroud.
- B) Remove seat shrouds from right and left sides.
- C) Remove two shoulder screws then seat frame.

Note: Shoulder Screws need torqued down 33 ft-lb when reinstalling seat frame.



Note: Retain any covers, mounts, and mounting hardware NOT BEING REPLACED for re-use.

Step 5: Remove frame/top covers.

A) Remove screws and washers from mounts then remove frame covers.

For frame cover kit ONLY: Install new covers/components. Continue to last step.

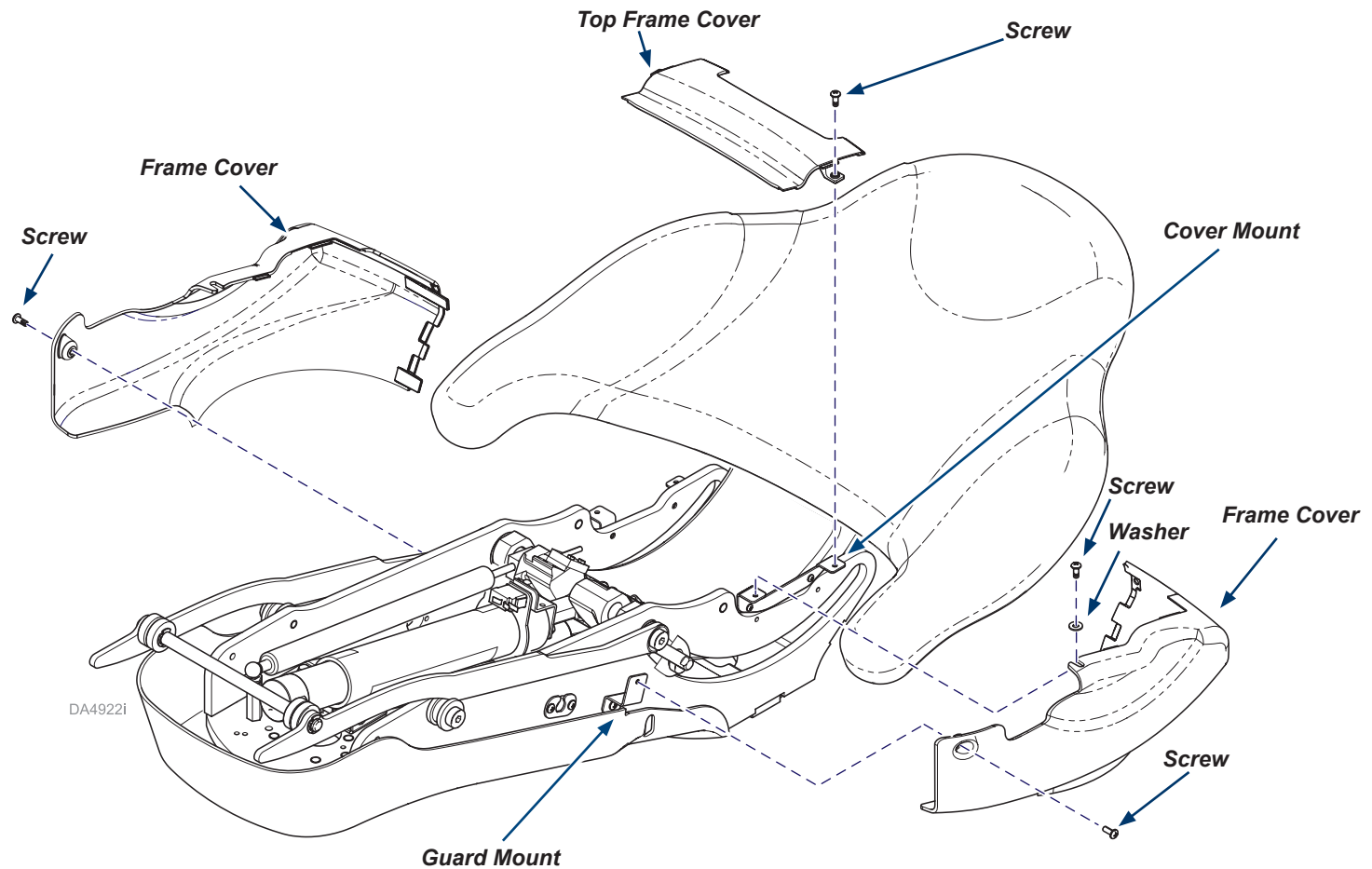
For top frame cover or cover mount kit: Remove screws and washers then remove frame covers. Continue to next step.

For guard mount kit: Continue to next page.

B) Remove two screws then top frame cover.

For top frame cover kit ONLY: Install new covers/components. Proceed to last step.

For cover mount kit: Continue to next page.

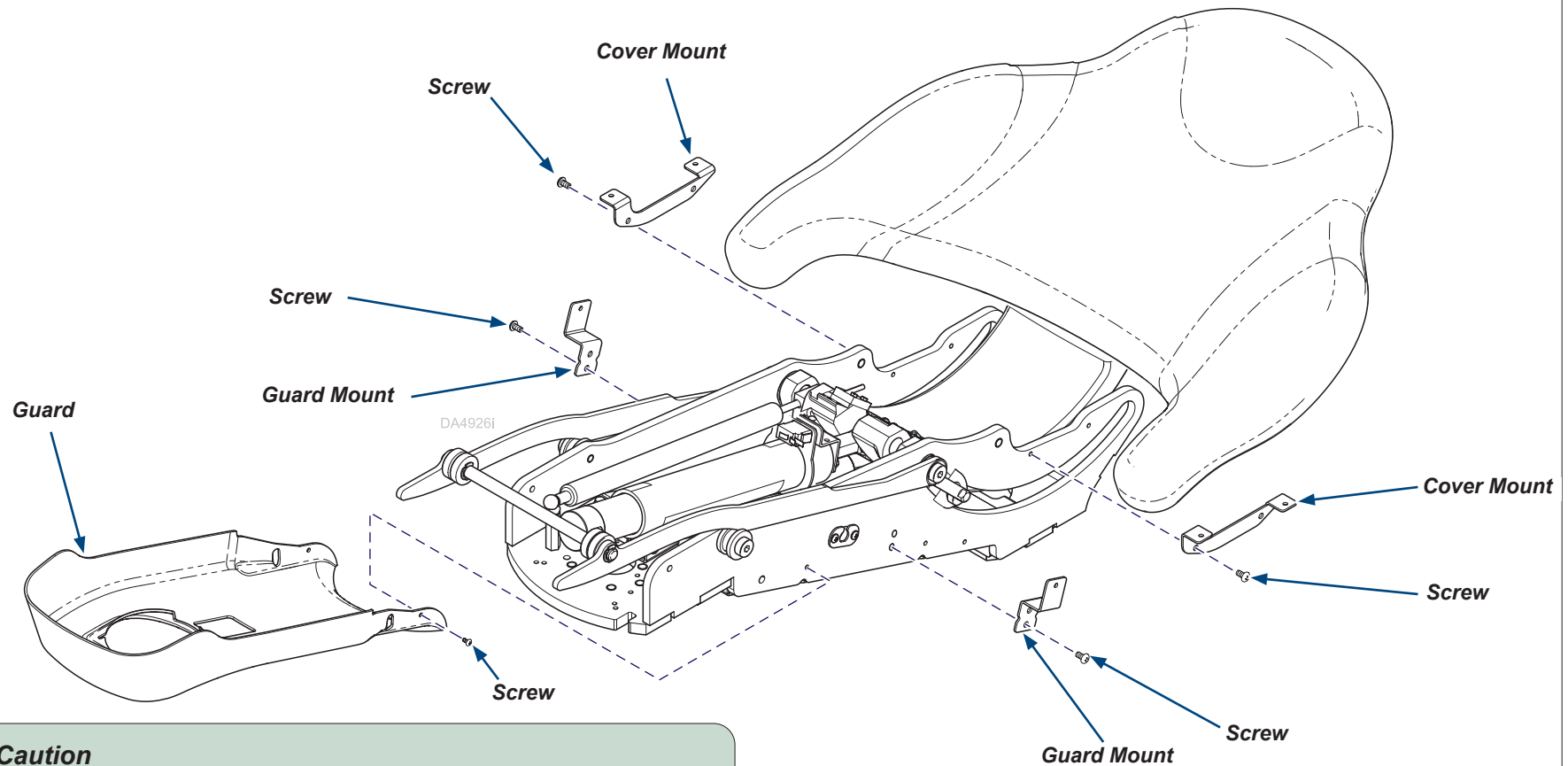


Note: Retain any guard, mounts, and mounting hardware NOT BEING REPLACED for re-use.

Step 6: Remove cover/guard mounts.

A) For guard mount kit ONLY: Remove screws then guard. Remove mounting hardware then guard mounts. Install new guard mounts/components. Install previously removed guard then screws. Reverse Step 5A. Proceed to last step.

For cover mount kit ONLY: Remove screws and washers then remove frame covers. Install new cover mounts/components. Reverse Steps 5A and 5B. Proceed to last step.



Caution

Verify frame top cover and frame covers do not contact the carriage casting.

Step 7: Finalize installation.

A) Install any remaining covers/components (reverse Steps 2 through 4).

B) Connect chair to power source.

C) Ensure power is restored for hydraulic functions.

D) Verify operation.



Because we care.