

626 Back Actuator Assembly / Back Actuator Motor Installation [002-10065-01 / 002-10066-01]

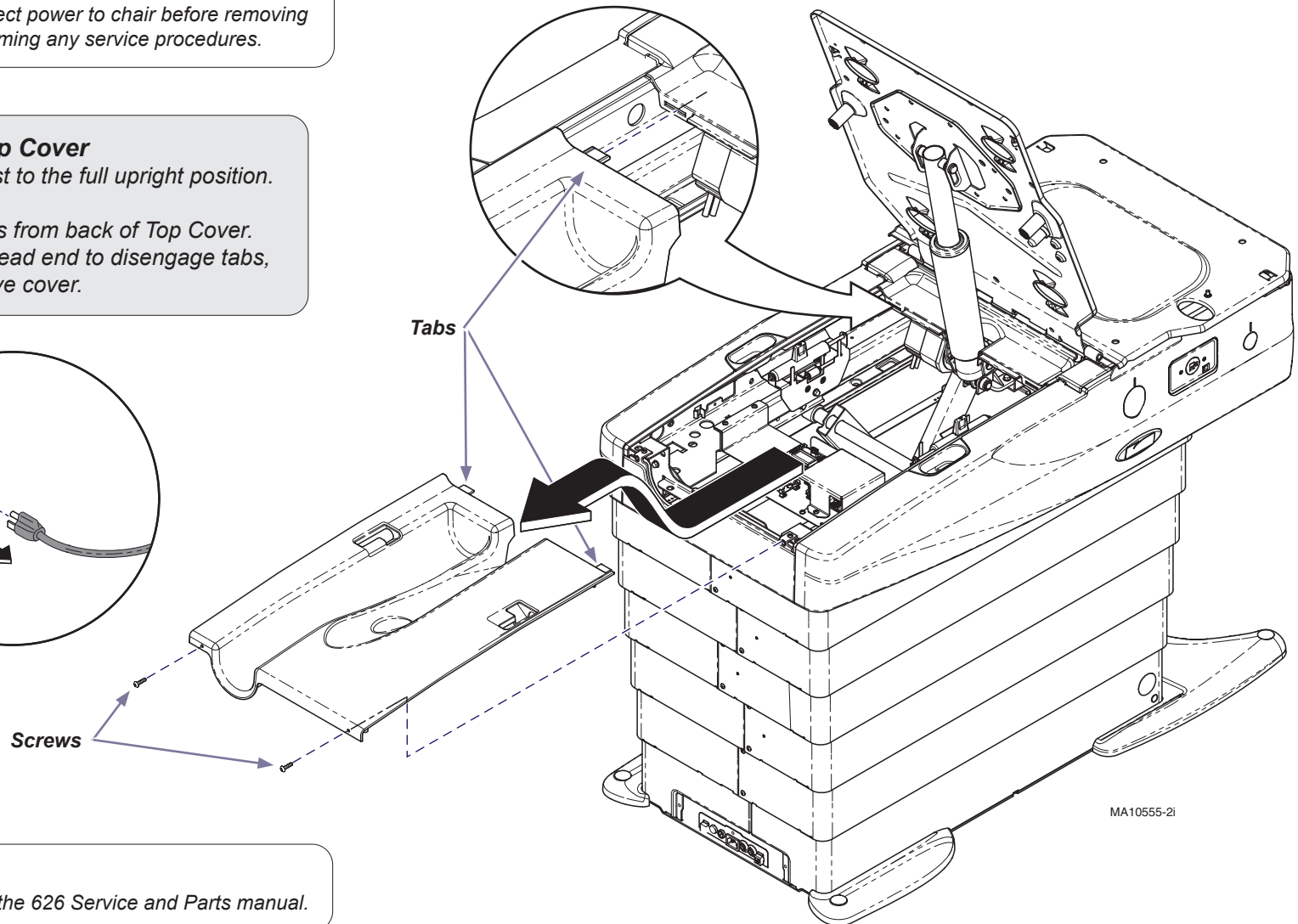
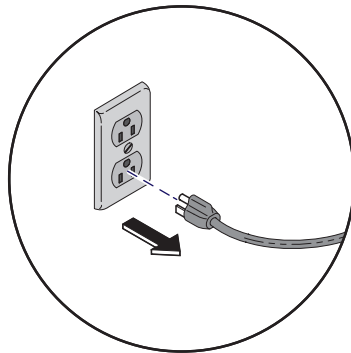


Caution

Always disconnect power to chair before removing covers or performing any service procedures.

Step 1: Remove Top Cover

- Raise chair backrest to the full upright position.
- Unplug chair.
- Remove two screws from back of Top Cover.
- Pull cover toward head end to disengage tabs, then lift up to remove cover.



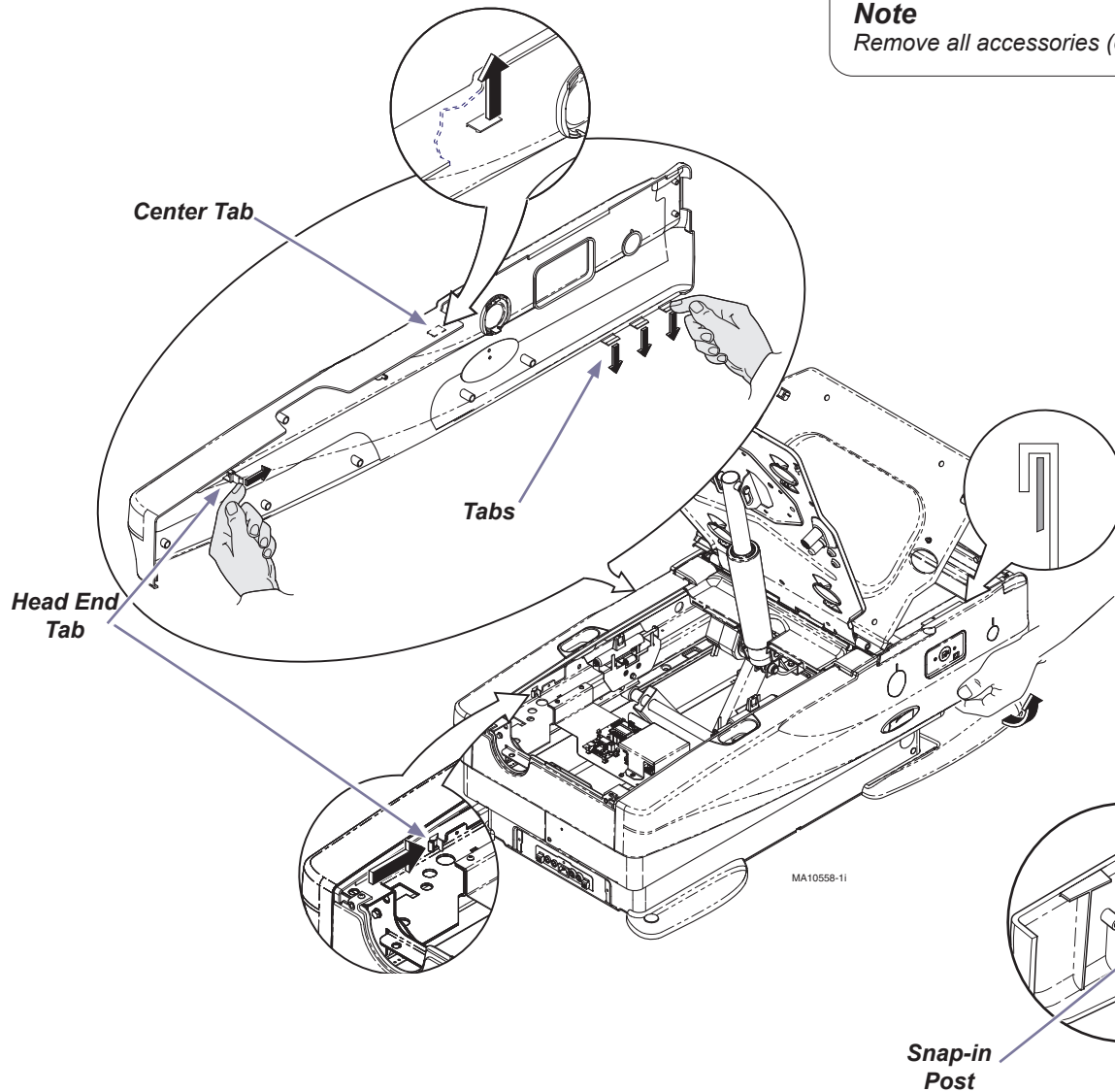
MA10555-21

Note

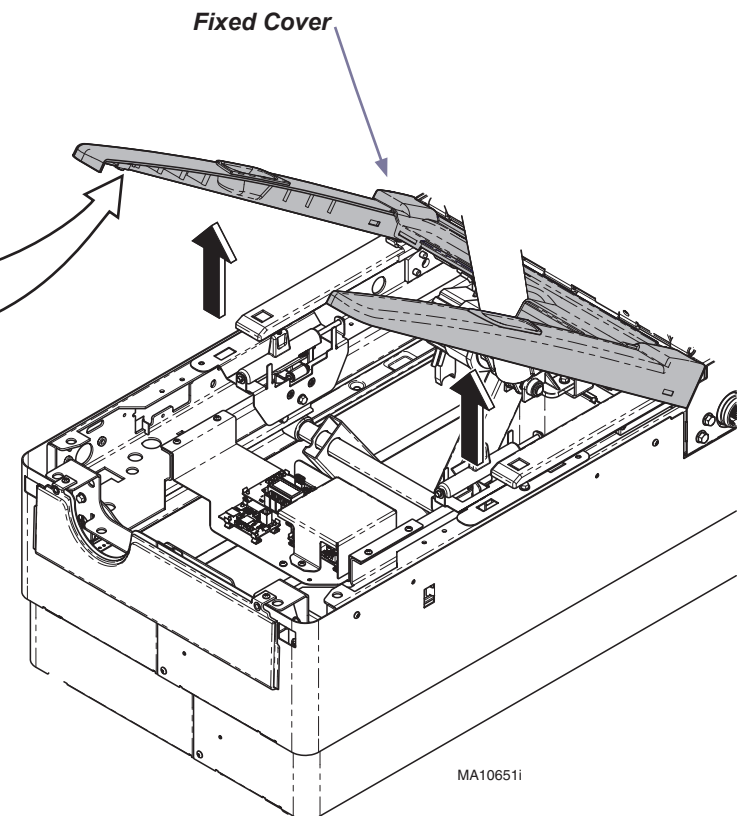
For parts list, refer to the 626 Service and Parts manual.

Note

Remove all accessories (ex. chair arms) before performing this procedure.

**Step 2: Remove Side Cladding.**

- A) Locate tab inside head end of chair. Push tab toward foot end of chair. Pull cladding away from chair.
- B) Pull down on three tabs located at the bottom foot end of the cladding and pull cladding away from chair.
- C) Locate tab inside at center of chair (footrest must be extended) push tab up and pull cladding away from chair.
- D) Push up on Cladding, tip up and remove.
- E) Repeat process for opposite side.

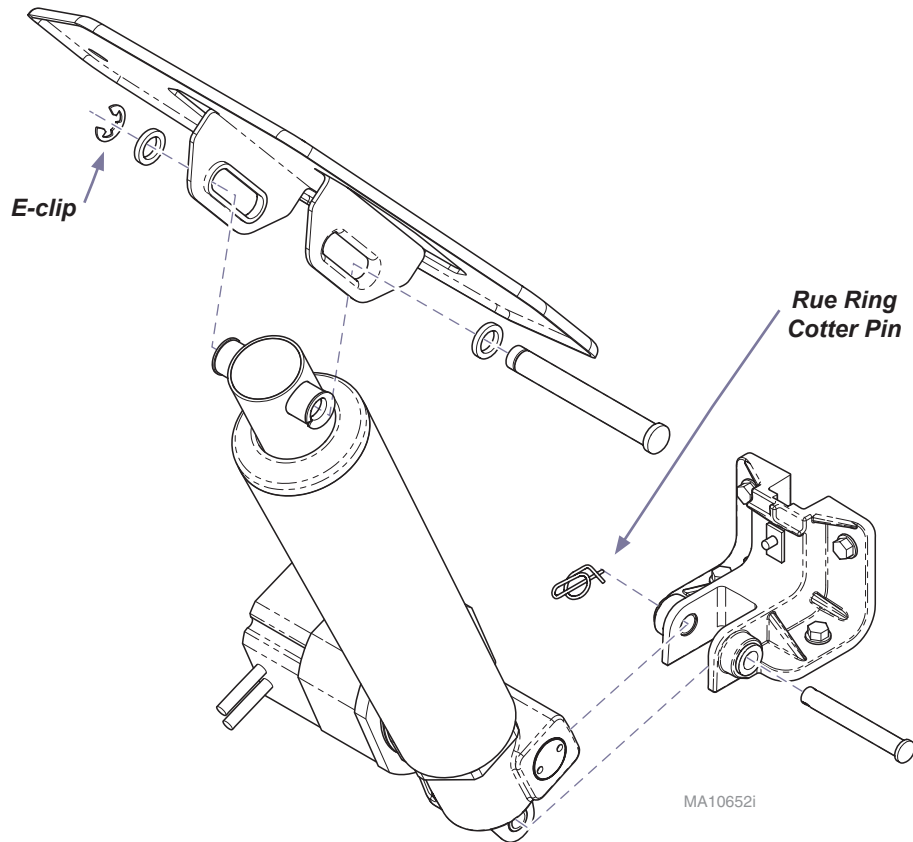
**Step 3: Disconnect Back Actuator Motor Wires.**

- A) Squeeze Snap-in Post together on the bottom corners of the Fixed Cover.
- B) Tilt up Fixed cover. Access Back Motor Actuator wire connections and disconnect.

Actuator Replacement...

Step 4A: Replace Back Actuator Assembly.

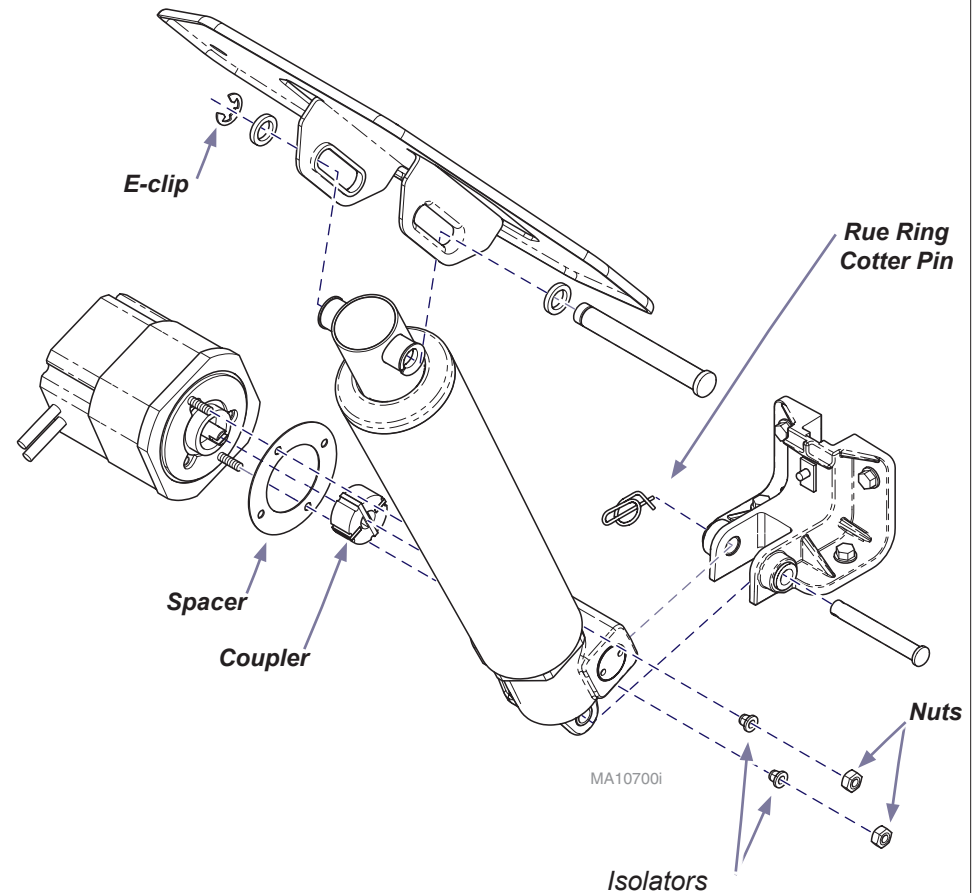
- A) Remove e-clip and top clevis pin
- B) Remove rue ring cotter pin and bottom clevis pin.
- C) Install new actuator with clevis pins, rue ring cotter pin and e-clip.
- D) Connect actuator motor wire harnesses.
- E) Perform chair calibration shown on next page.
- F) Install covers and cladding.



Motor Replacement...

Step 4B: Replace Back Actuator Motor.

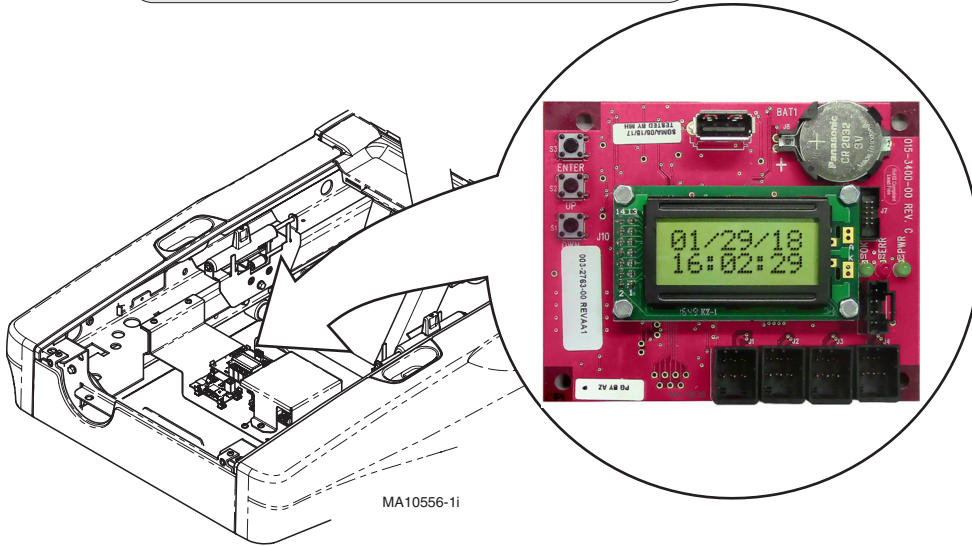
- A) Remove e-clip and top clevis pin
- B) Remove rue ring cotter pin and bottom clevis pin.
- C) Remove motor from actuator by removing two nuts.
- D) Align Coupler, install new motor, reuse Spacer and two Isolators.
- E) Install actuator with clevis pins, rue ring cotter pin and e-clip.
- F) Connect actuator motor wire harnesses.
- G) Perform chair calibration shown on next page.
- H) Install covers and cladding.



Chair Postion Calibration Procedure

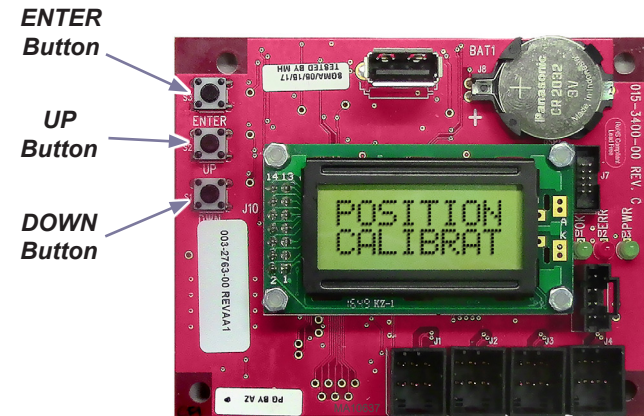
Step 1:

- Power up chair.
- Locate the Diagnostic PC Board.



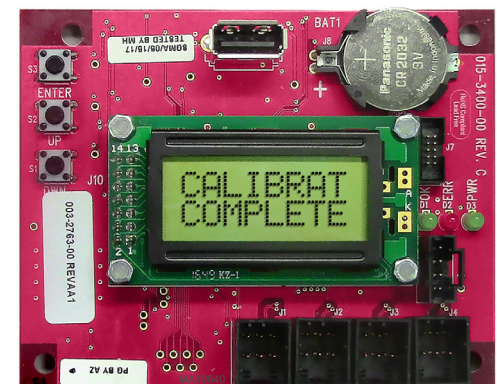
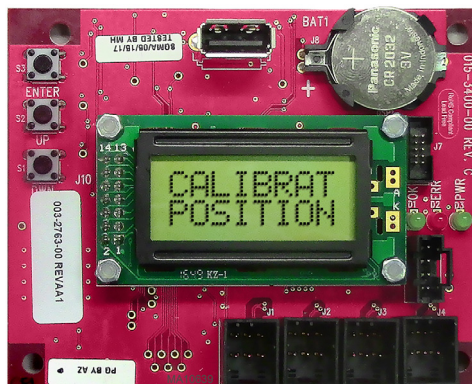
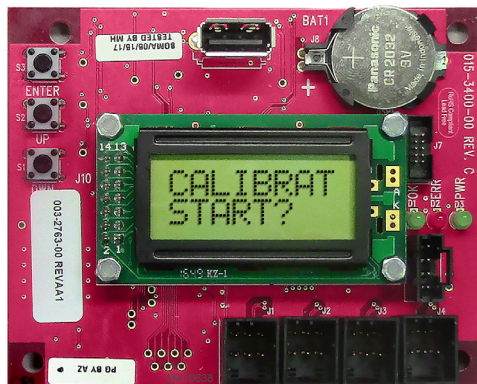
Step 2:

- Press and release the UP or DOWN button until "POSITION CALIBRAT(ion)" is displayed.



Step 3:

- Press ENTER button once. The display will show "CALIBRAT(ion) Start."
- Press ENTER button again. The chair base and back will start to cycle up & down and the display will show "CALIBRATING (Scrolling) POSITION."
- You will hear a steady pattern of "beeps". When calibration is completed you will hear three short beeps and the display will show "CALIBRAT COMPLETE."

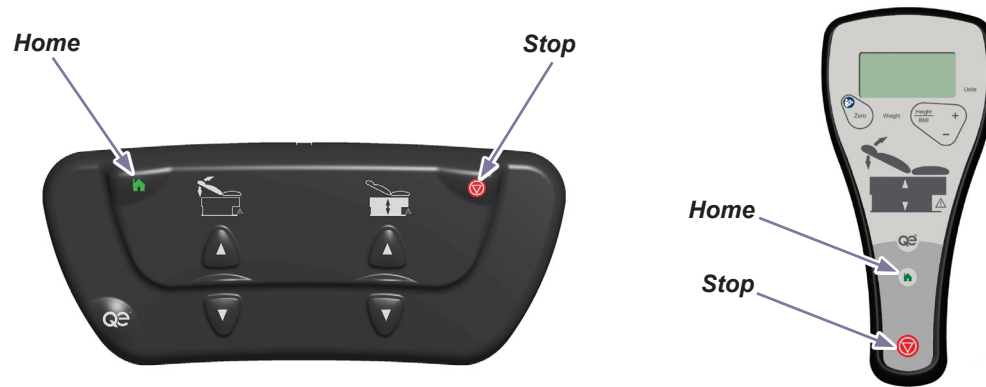


Programmable 'Home' Function

The Home function automatically commands the chair to a programmed position. The Home function is factory preset to automatically raise or lower the chair height to 17 inches (43 cm) and raise the Back angle to 80 degrees.

Note

An audible tone will sound when the Home button is pressed to indicate auto-movement.



To program the Home function...

- Press the Base Up / Down button to move the Base to the desired height.
- Press the Back Up / Down button to move the Back to the desired angle.
- Press the Stop button, then the Home button and hold simultaneously for three to four seconds.

Note: You will hear an audible tone when the new 'Home' position is saved.

To activate the Home function...

Press and release the Home button.

Note: At any time, ANY button can be pressed to terminate movement.



Equipment Alert

Controllers must be within a Fifteen foot radius of chair to be able to command the chair.

Quick Exam® Function

The Quick Exam function automatically commands the chair to a programmed position. The Quick Exam function is factory preset to automatically raise or lower the chair height to 34 inches (86 cm) and raise the Back angle to 80 degrees.

Note

An audible tone will sound when the Quick Exam button is pressed to indicate auto-movement.

To activate the Quick Exam function...

Press and release the Quick Exam button.

Note: At any time, ANY button can be pressed to terminate movement.

To program the Quick Exam function...

- Press the Base Up / Down button to move the Base to the desired height.
- Press the Back Up / Down button to move the Back to the desired angle.
- Press the Stop button, then the Quick Exam button and hold simultaneously for three to four seconds.

Note: You will hear an audible tone when the new Quick Exam position is saved.

