

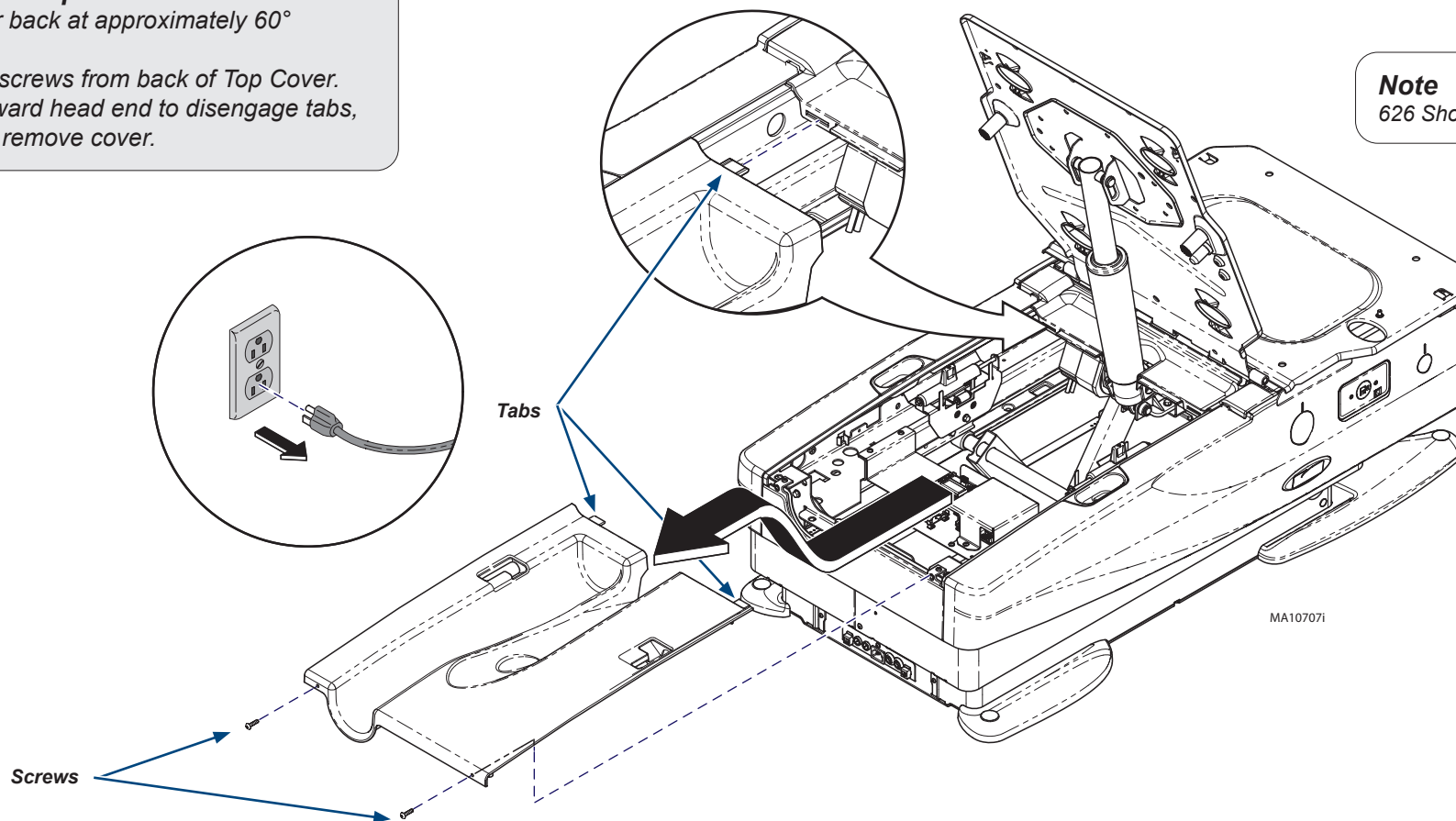


Caution

Always disconnect power to chair before removing covers or performing any service procedures.

Step 1: Remove Top Cover

- Position chair back at approximately 60°
- Unplug chair.
- Remove two screws from back of Top Cover.
- Pull cover toward head end to disengage tabs, then lift up to remove cover.



Note

626 Shown.

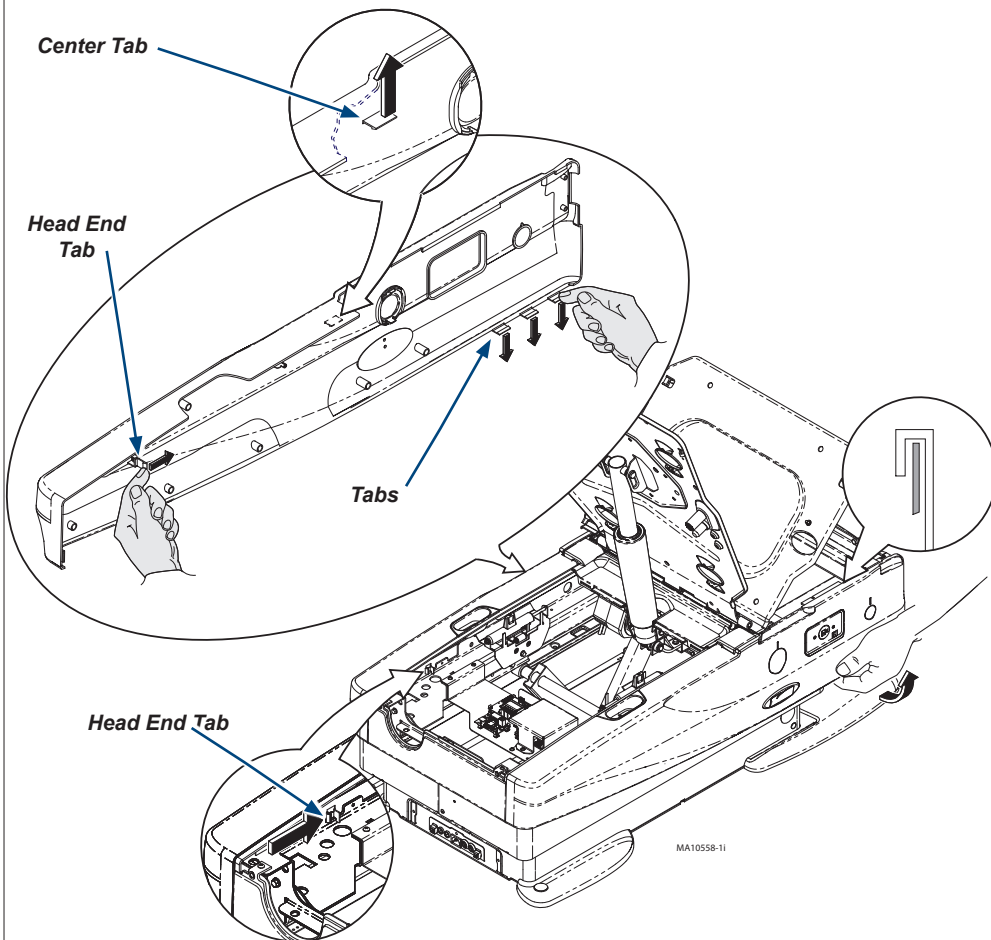
Note

For parts list, refer to the Service and Parts Manual.

626

Step 2: Remove Side Cladding.

- Locate tab inside head end of chair. Push tab toward foot end of chair. Pull cladding away from chair.
- Pull down on three tabs located at the bottom foot end of the cladding and pull cladding away from chair.
- Locate tab inside at center of chair (footrest must be extended) push tab up and pull cladding away from chair.
- Push up on Cladding, tip up and remove.
- Repeat process for opposite side.



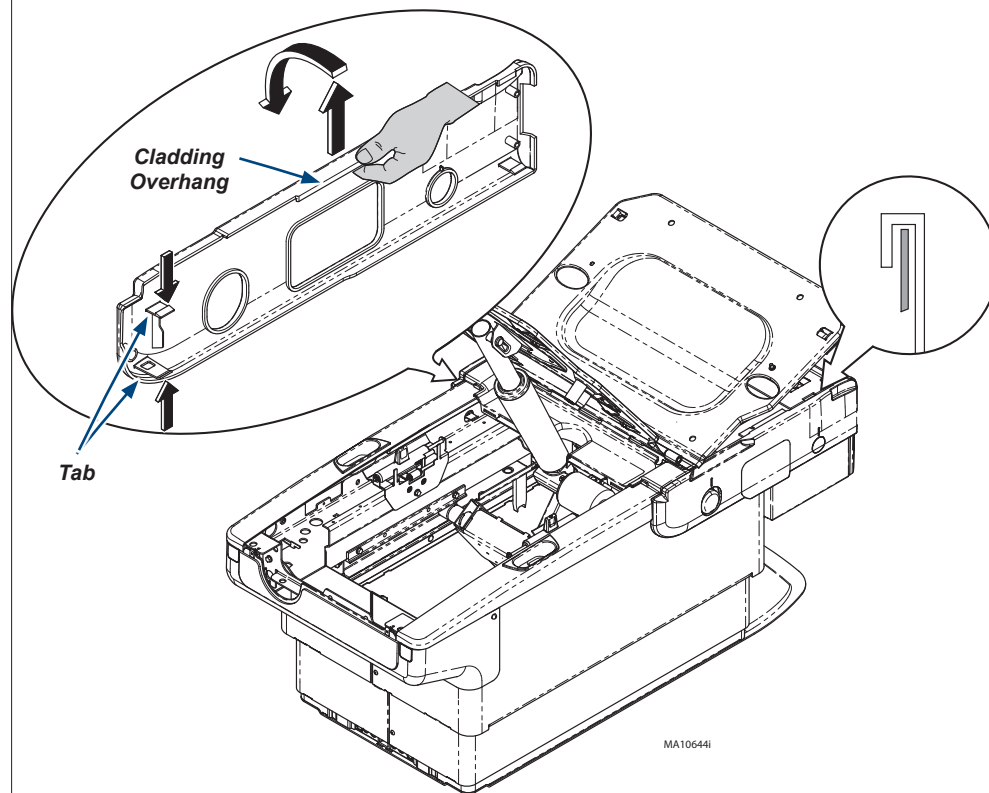
Note

Remove all accessories (ex. chair arms) before performing this procedure.

224/225/627

Step 2: Remove Side Cladding.

- Locate tabs inside at center of chair (footrest must be extended). Push down on top tab and up on bottom tab. Pull cladding away from chair.
- Pull up on Cladding overhang, and remove.
- Repeat process for opposite side.

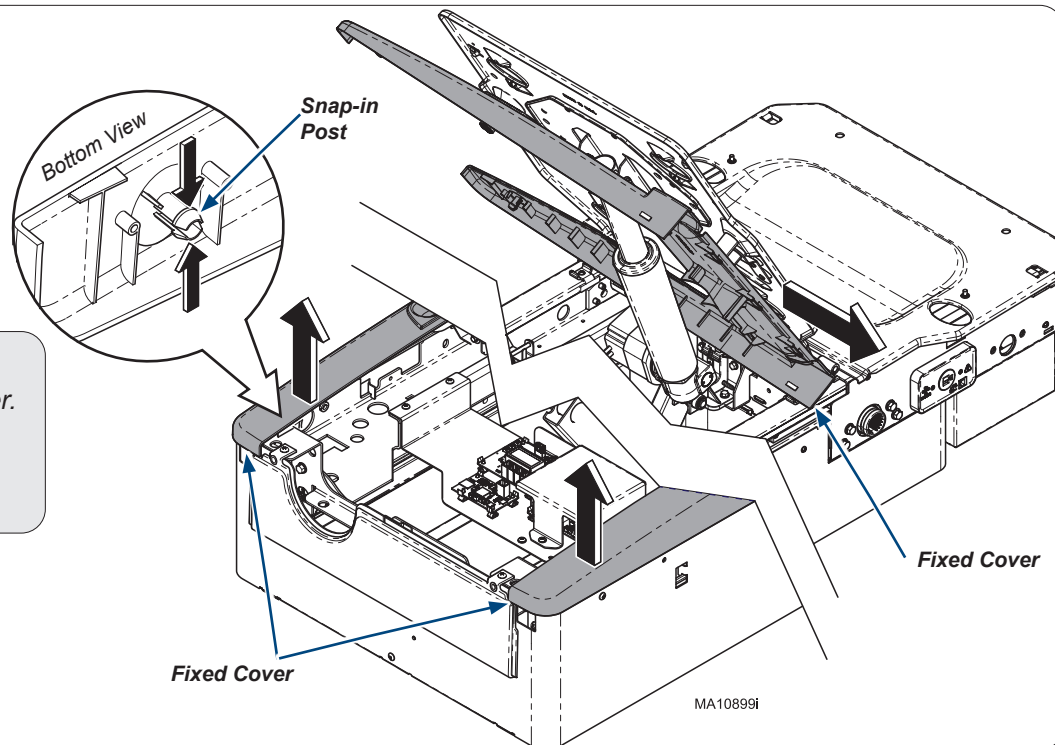


Note

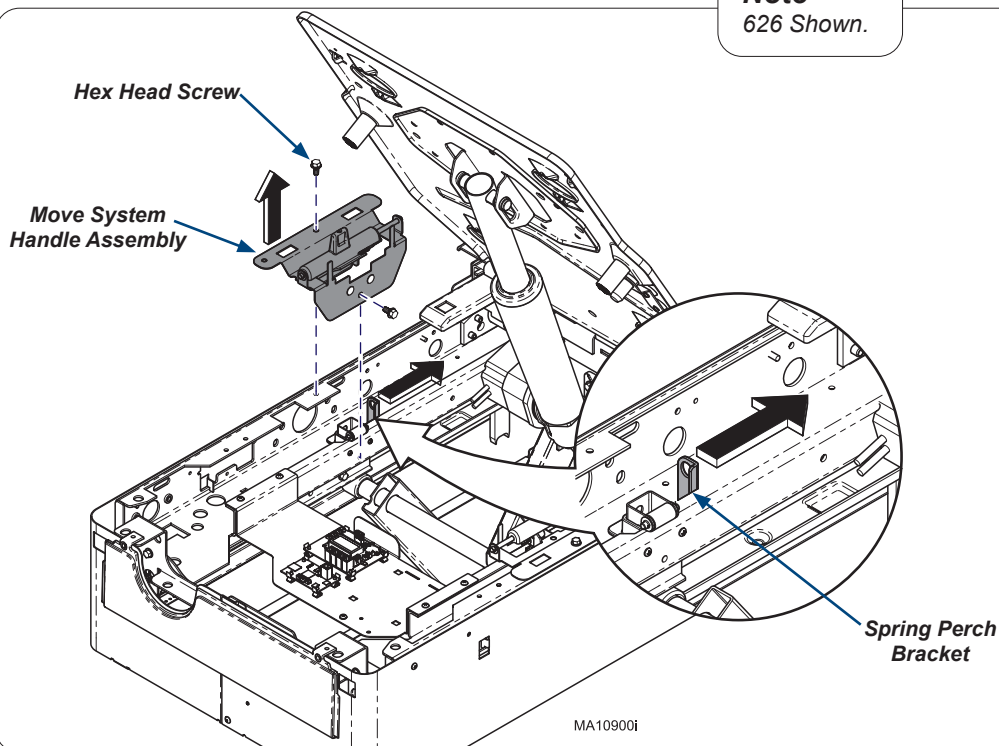
225 Shown.

Step 3: Remove Fixed cover.

- A) Squeeze Snap-in Post together on the bottom corners of the Fixed Cover.
- B) Pull upward on Fixed Cover corners.
- C) lift back of Fixed Cover up then rotate 90°.
- D) Slide Fixed Cover out from between Back Actuator and chair back.



Note
626 Shown.

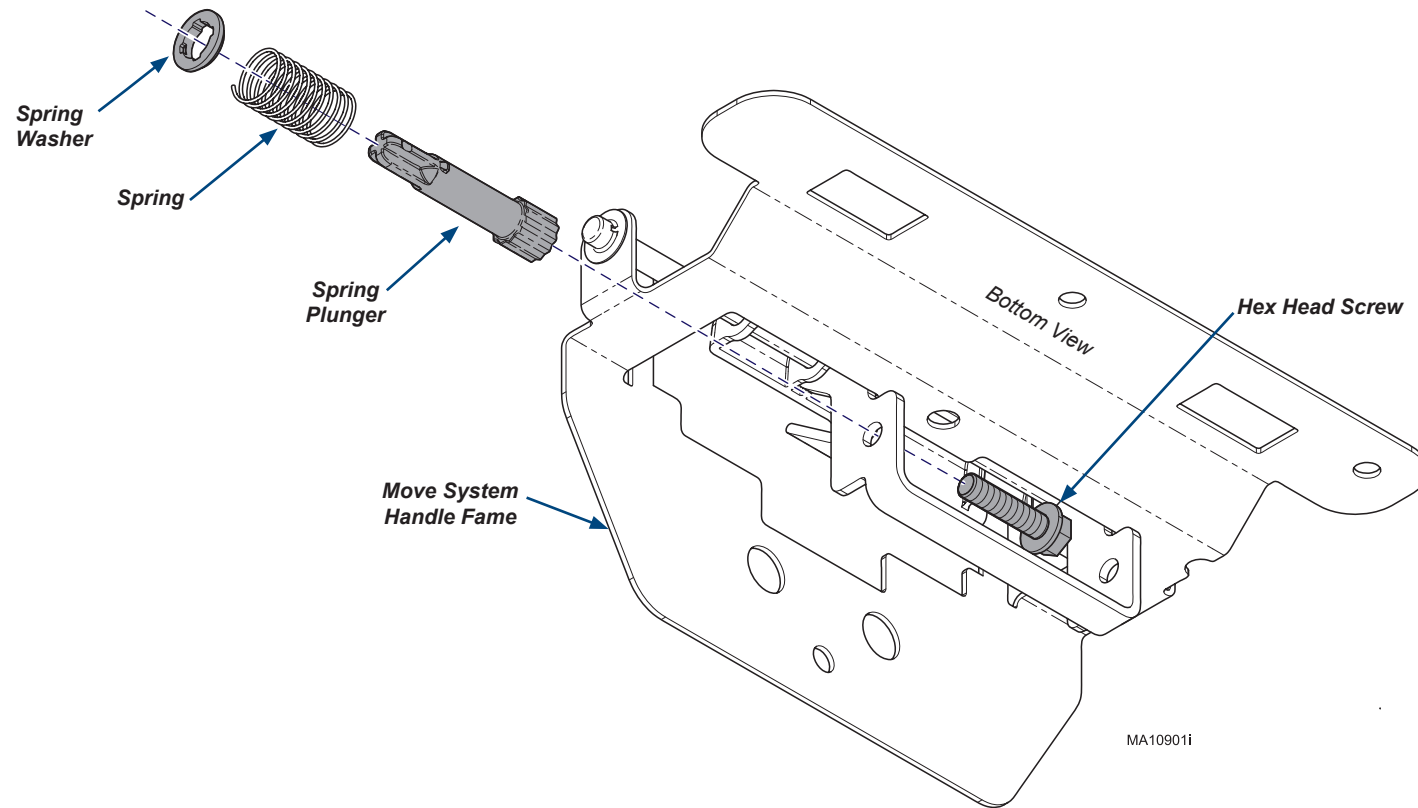


Step 4: Remove Move System Handle Assembly.

- A) Remove top and side Hex Head Screws.
- B) Pull upward on Move System Handle Assembly. While pushing the Spring Perch Bracket towards the seat end of the chair.

Step 5: Remove Spring Plunger.

- A) Push in Spring Washer slightly and rotate 90°.
- B) Remove Spring Washer and Spring from Spring Plunger.
- C) Unthread Hex Head Screw from Spring Plunger and remove.



Step 6: Reassemble (Reverse Order).

- A) Insert Hex Head Screw into Move System Handle Frame, and secure Spring Plunger.
- B) Slide Spring and Spring Washer onto Spring Plunger, rotate Spring Washer 90° to lock into place.
- C) Push Spring Perch Bracket towards the seat end of the chair. Install Move System Handle Assembly, secure with top and side Hex Head Screws.
- D) Install Fixed Cover, Side Cladding, Top Cover.