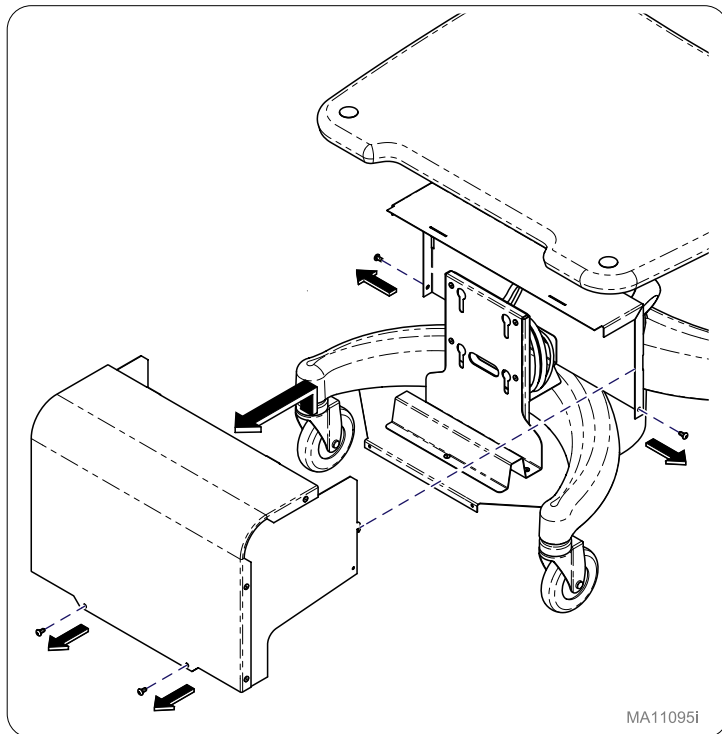


Power Mount [PMBL, PMBR, PMSL, PMSR]



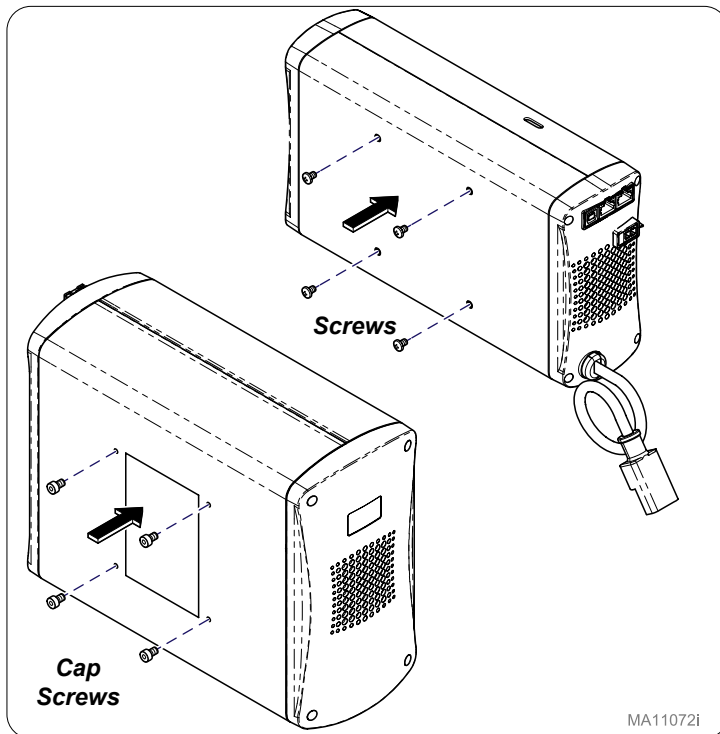
Step 1:

Remove screws (4) and battery cover from power mount assembly.



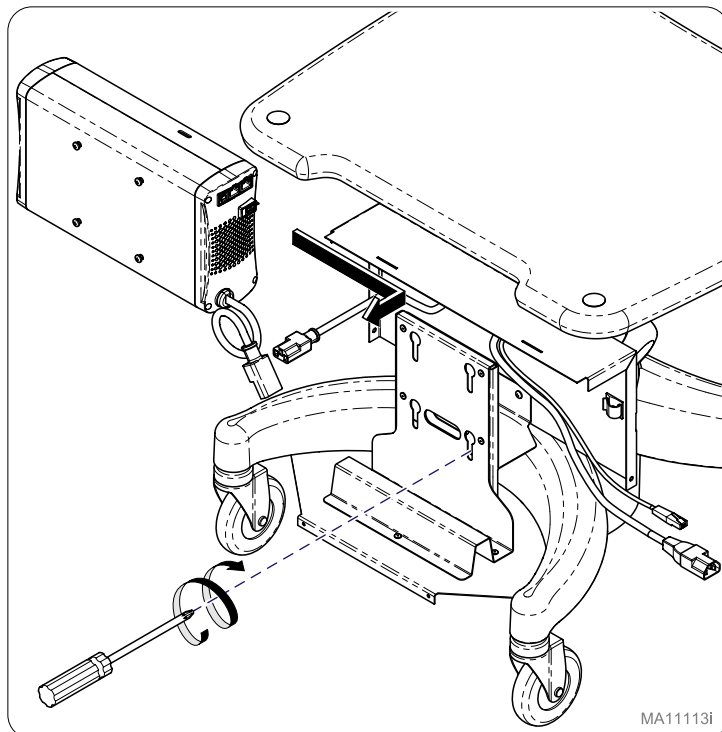
Step 2:

Tightly install cap screws (4) into battery. Install screws (4) loosely into charger with no less than a 1/8" gap.



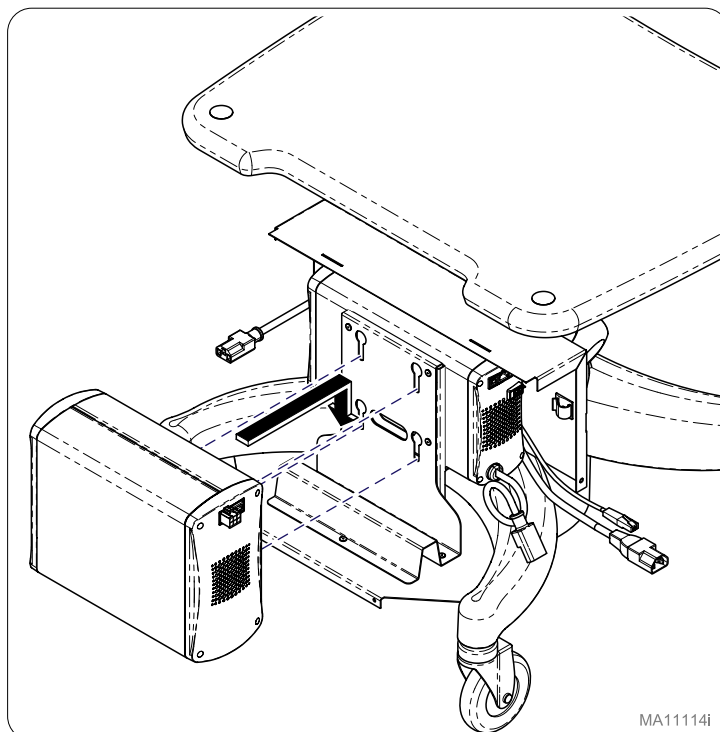
Step 3:

Slide charger into rear of power mount assembly using screws to hang charger to assembly and tighten screws (4).



Step 4:

Position battery using cap screws to hang battery to power mount assembly.



Step 5:

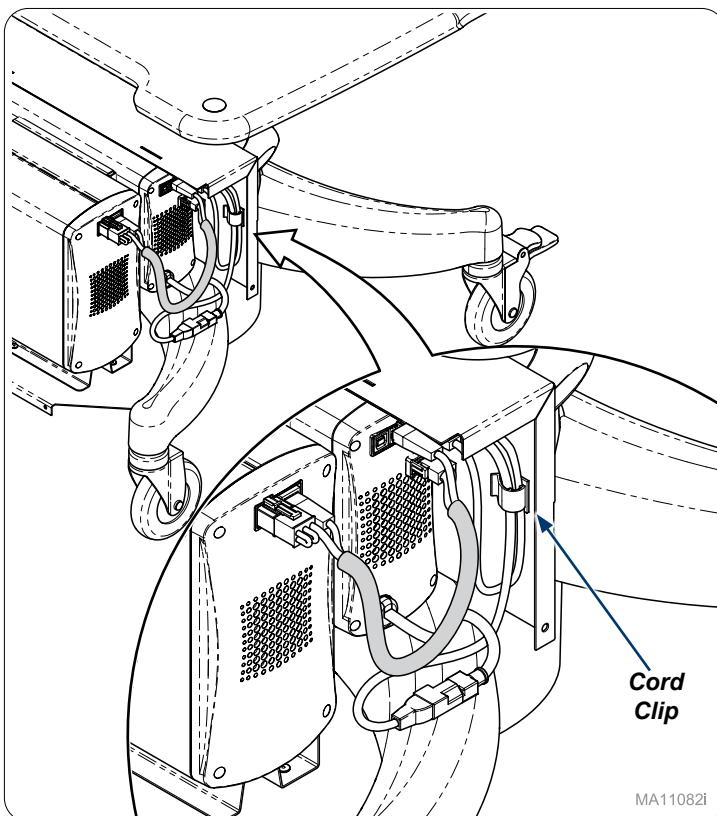
Refer to suppliers user manual for power system connection instructions.

**Equipment Alert**

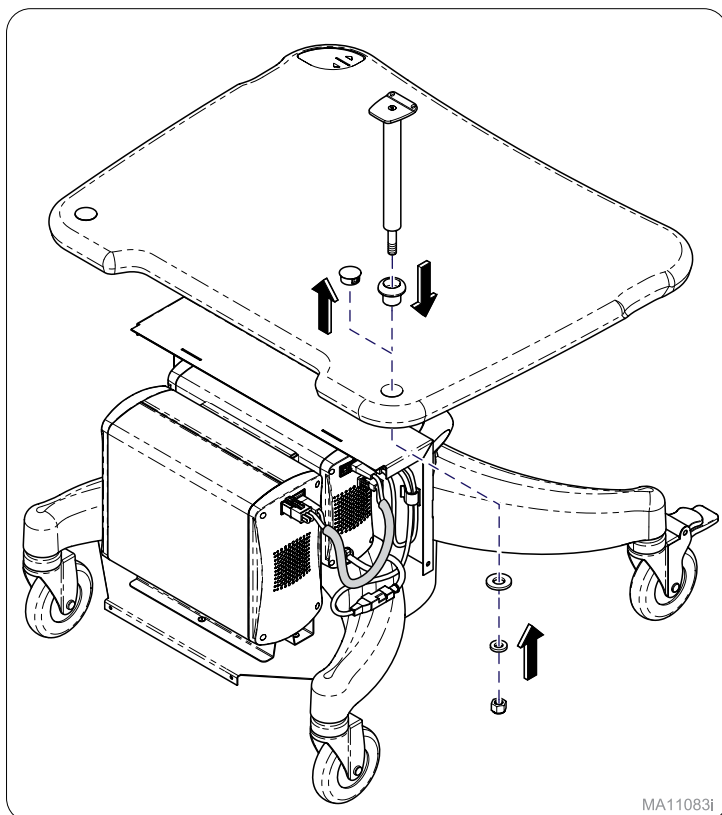
Connecting power system to power before all connections are made could result in a fault of the system.

Step 6:

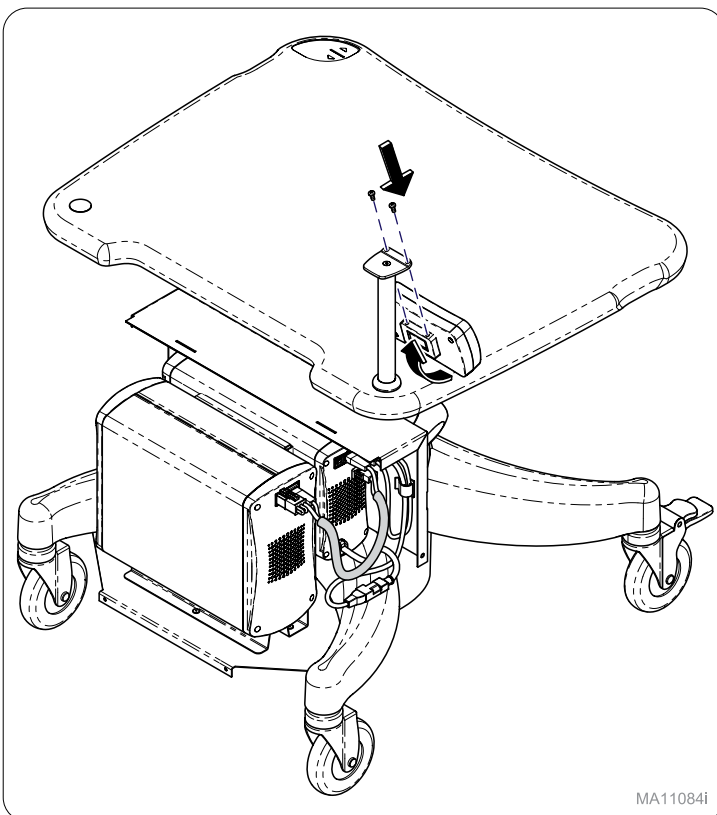
Secure cords into cord clip as needed.

**Step 7:**

Remove hole plug from worksurface. Install RUI mounting pole assembly as shown.

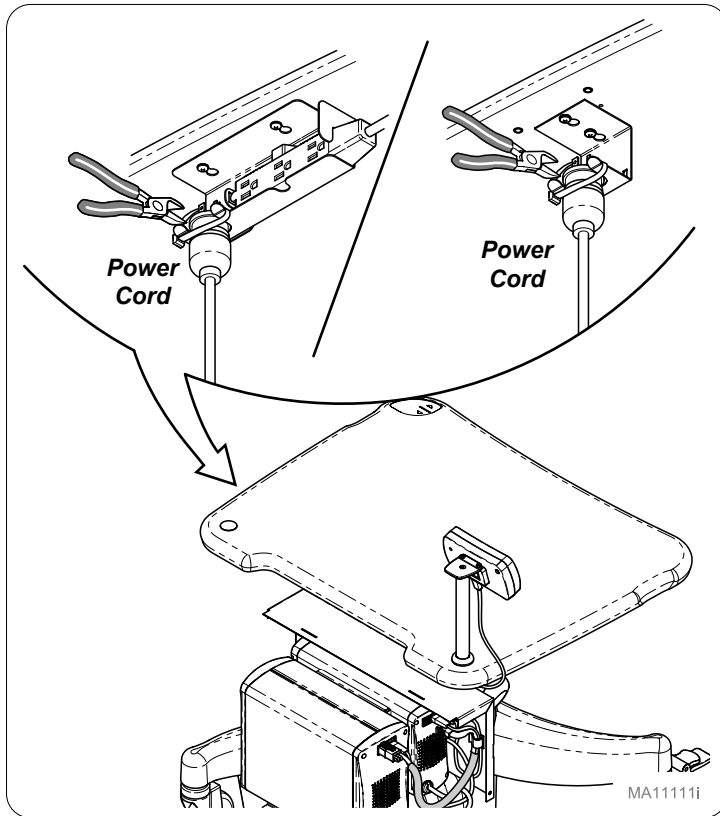
**Step 8:**

Mount RUI Display onto pole assembly with screws (2).



Step 9:

Remove zip tie from power cord.

**Step 10:**

Install battery cover assembly with screws (4).

