

# Wired Scale Control PC Board [002-10369-00]

**Applies to Models:**

626 (-003 & -004)

**Special Tools:**

none



## Caution

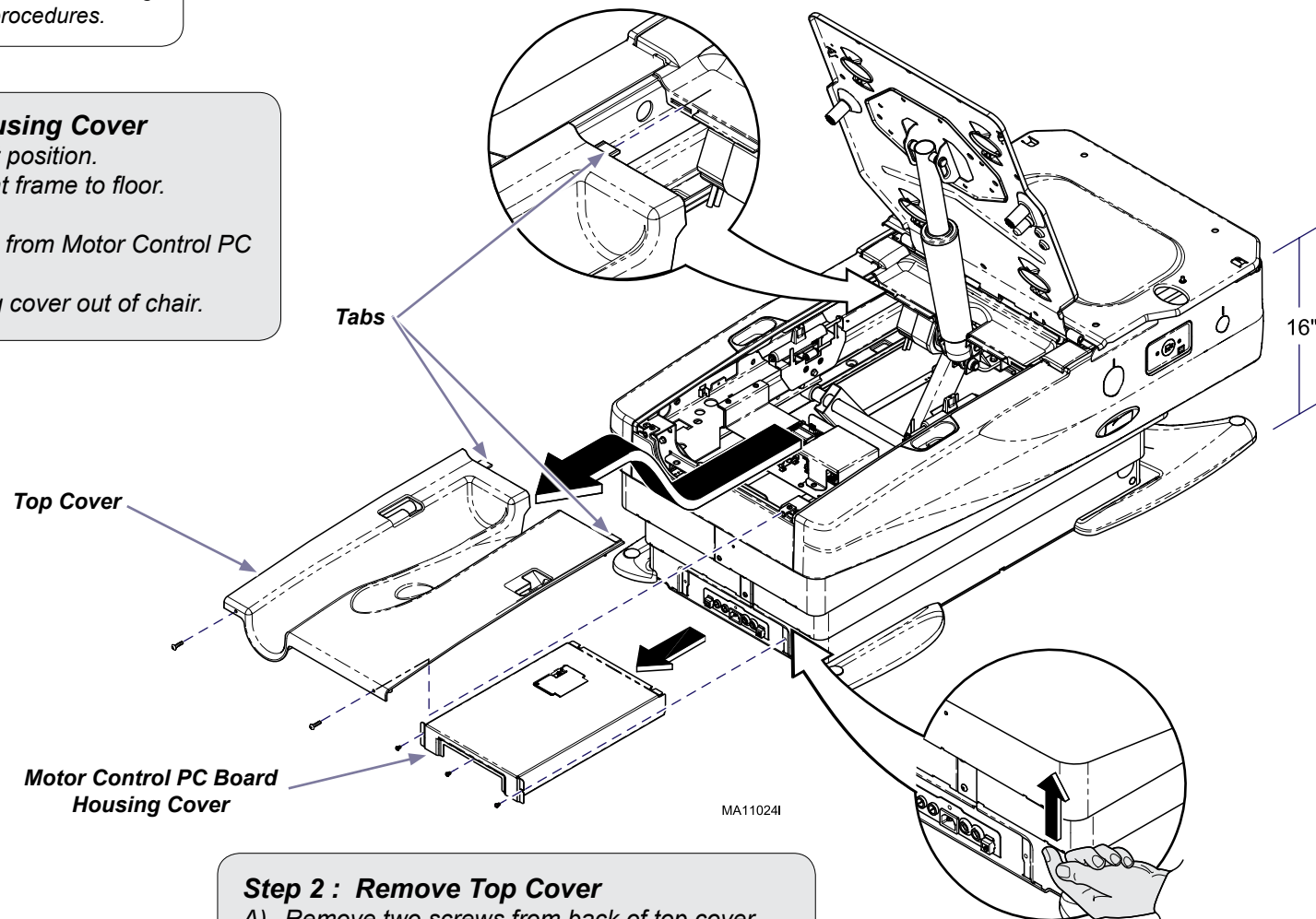
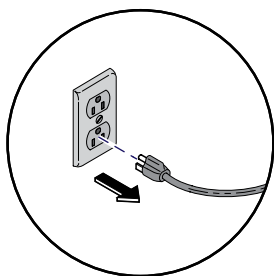
Always disconnect power to chair before removing covers or performing any service procedures.

## Note

The Wired Scale Control may not work simultaneously with the Wireless Scale Control

## Step 1: Remove Control Board Housing Cover

- Raise chair backrest to the full upright position.
- Position chair base 16" from chair seat frame to floor.
- Unplug chair.
- Lift the shrouds, remove three screws from Motor Control PC board housing cover.
- Slide Motor Control PC board housing cover out of chair.

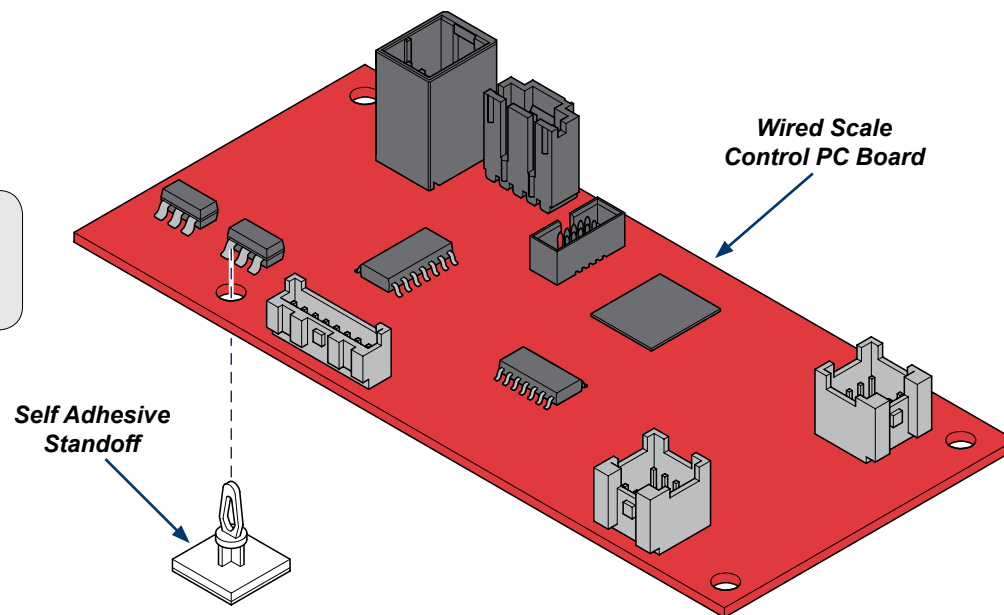


## Step 2 : Remove Top Cover

- Remove two screws from back of top cover.
- Pull cover toward head end to disengage tabs.

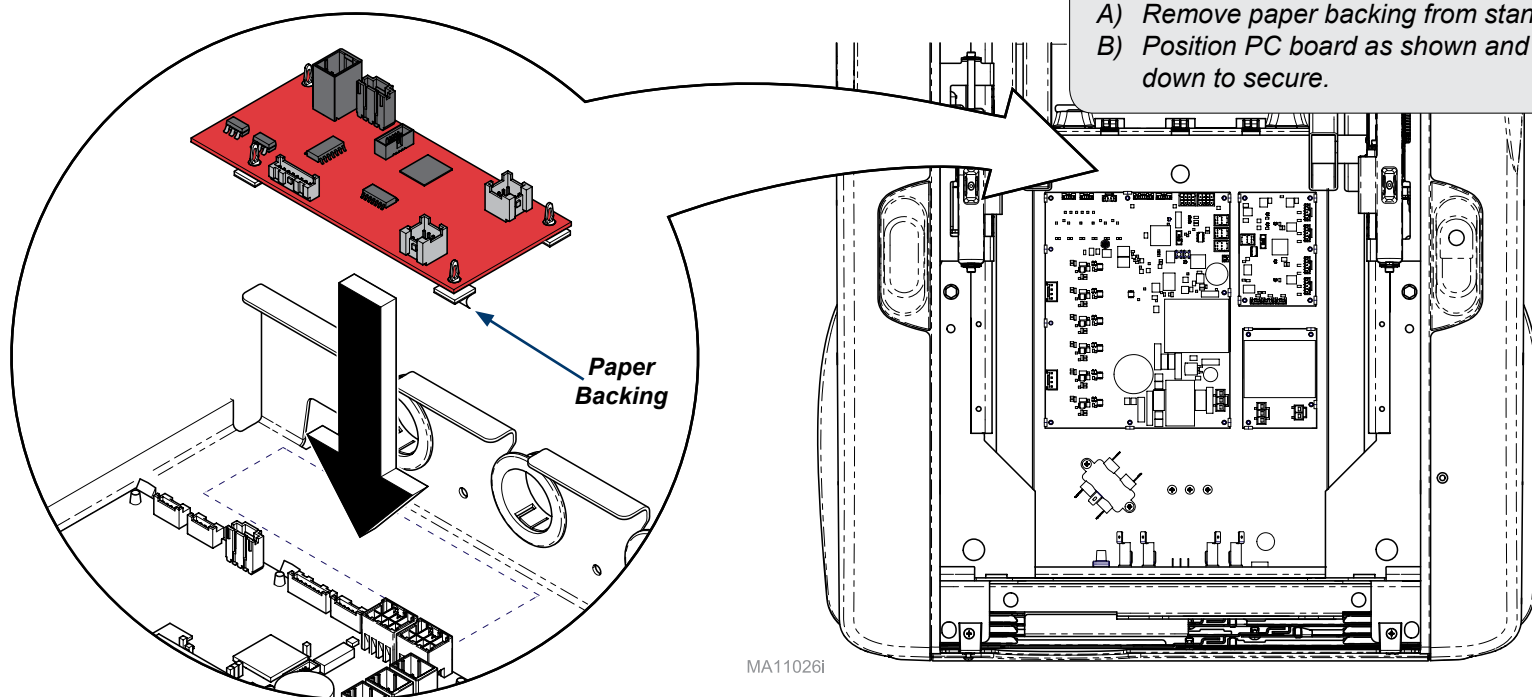
### Step 3 : Attach Standoffs

- A) Snap self adhesive standoff's (4)  
onto Wired Scale Control PC board.



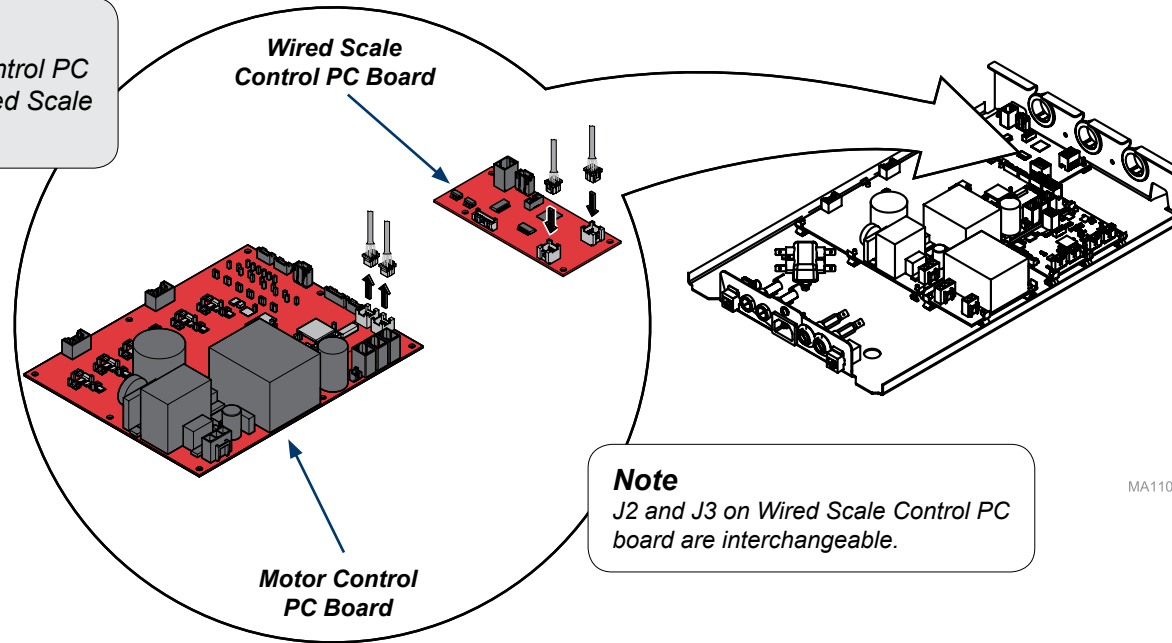
### Step 4 : Install PC board

- A) Remove paper backing from standoffs.  
B) Position PC board as shown and press down to secure.



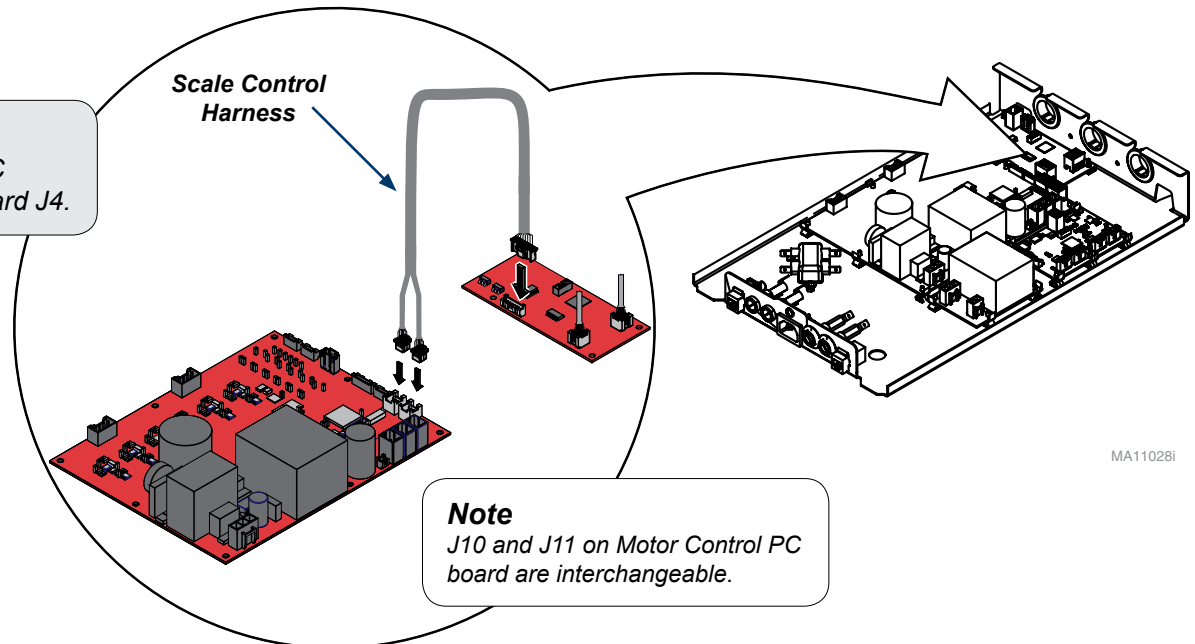
### Step 5 : Harness Connections

- A) Disconnect harness's from Motor Control PC board J10 and J11 and attach to Wired Scale Control PC board J2 and J3.



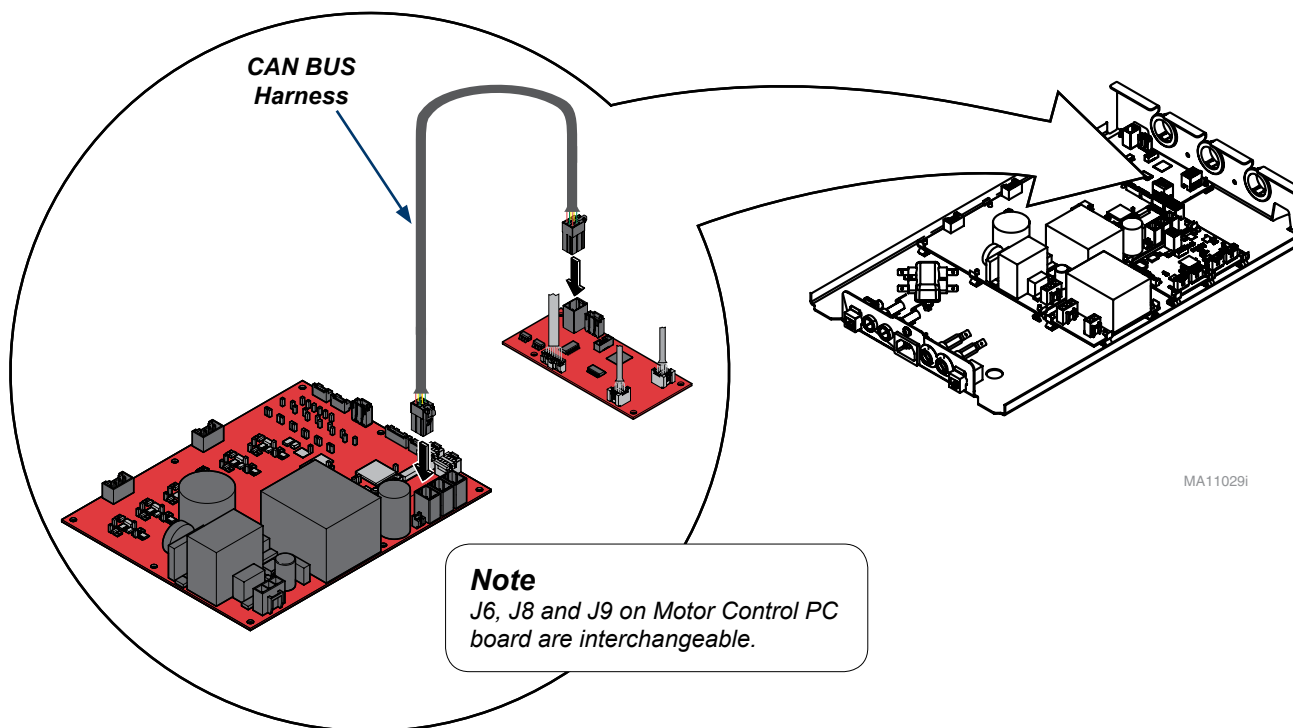
### Step 6 : Harness Connections (continued)

- A) Connect Scale Control harness to Motor Control PC board J10 and J11 and Wired Scale Control PC board J4.



**Step 7 : Harness Connections** *(continued)*

- A) Connect CAN BUS harness to Motor Control PC board J6, J8, or J9 and Wired Scale Control PC board J1.

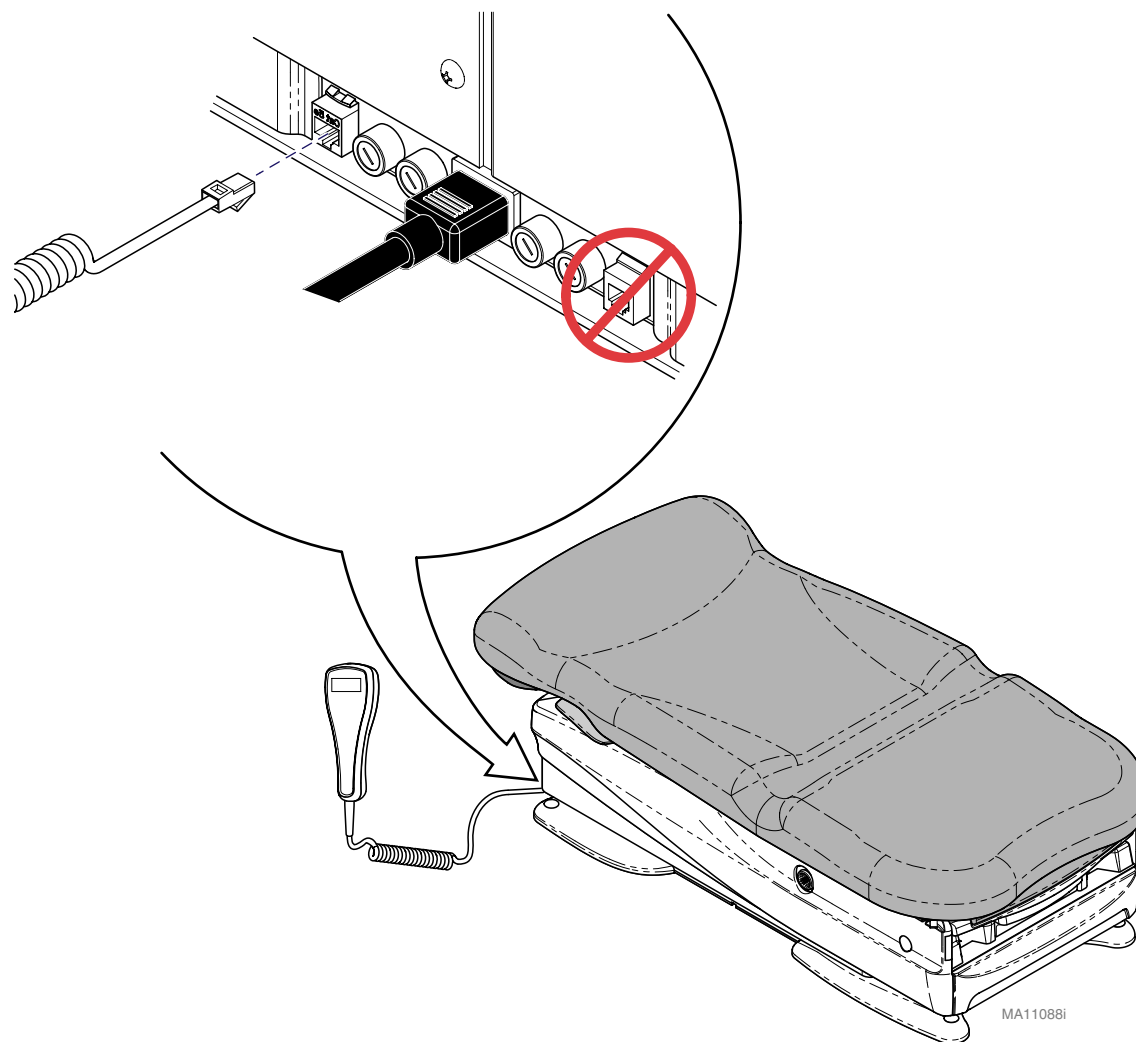


**Step 8: Re-assemble Chair.**

- A) Install Motor Control PC board housing cover.  
B) Install top cover.  
C) Connect power cord.

**Step 9 : Hand Control Connection**

- A) Connect hand control at rear of chair base.
- B) Perform Scale Calibration Procedure.



# Scale Calibration Procedure

## Step 1:

- A) Remove any load from the patient surface.
- B) Press and hold the Weight and Plus buttons until "CLEAR CHAIR" is displayed, then release buttons.



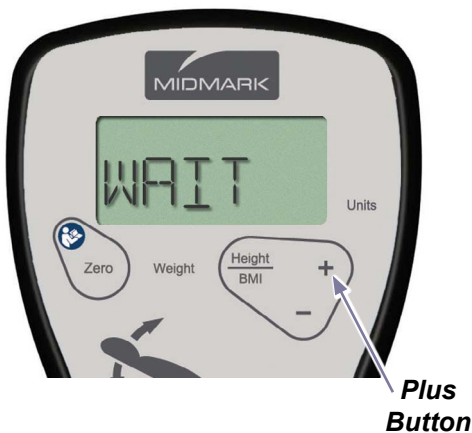
## Step 2:

- A) Press and release the plus button.
- B) The display will say "ZEROING" then "ADD 50 POUNDS".



## Step 3:

- A) Place fifty pound calibrated weight on patient surface.
- B) Firmly press and release the plus button.
- C) The display will say "WAIT" then "DONE".



## Step 4:

- A) The display will go blank.
- B) Firmly press and release the weight button. Note: "50.0 lbs" should be displayed.
- C) Remove calibrated weight.

