

Seat Back Retraction Spring Kit [002-10439-00 & -01]

Components:
Spring 1

Special Tools:
Torque wrench

Language of origin: English

Note

Torque wrench should be capable of 33 ft-lbs (44.7 Nm).

Step 1: Inspect components.

- A) Inspect all components in box.
- B) If rotation brake is being replaced as well as spring skip to step with removing spring mounting stud.

Step 2: Position chair.

- A) Move the chair back to FULL DOWN position.
- B) Raise / lower the chair to a comfortable working height.

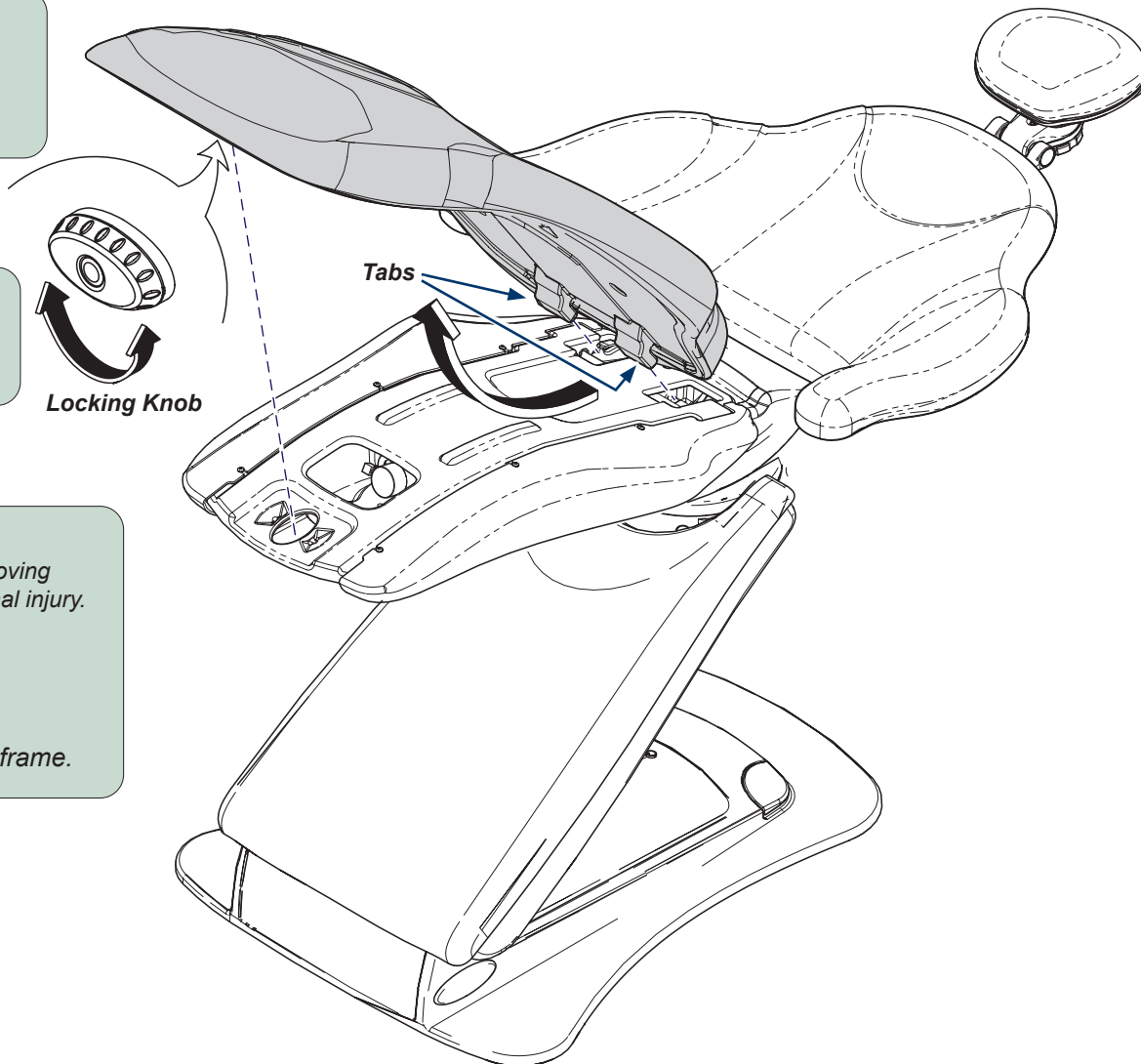


WARNING

Always disconnect the power source before removing any covers. Failure to do so may result in personal injury.

Step 3: Remove seat upholstery.

- A) Disconnect power source.
- B) Rotate seat locking knob.
- C) Lift seat upholstery, then pull to release tabs from frame.



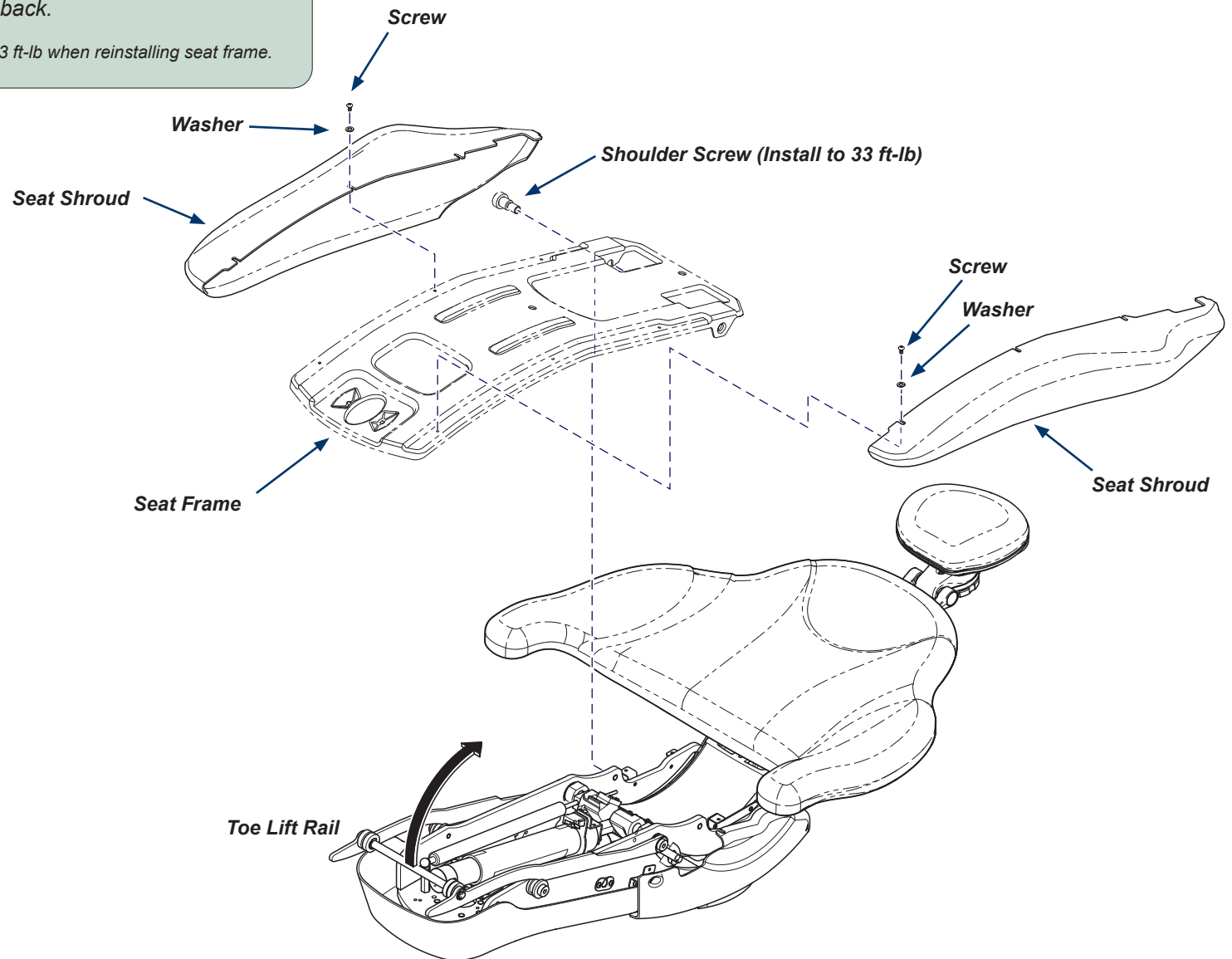
ArtFull

Note: Retain all shrouds, frame and mounting hardware for re-use. Some mounting hardware may not be shown depending on model.

Step 4: Remove shrouds and frame.

- A) Remove three screws and washers from each seat shroud.
- B) Remove seat shrouds from right and left sides.
- C) Remove two shoulder screws then seat frame.
- D) Raise toe lift rail to rest on chair back.

Note: Shoulder Screws need torqued down 33 ft-lb when reinstalling seat frame.

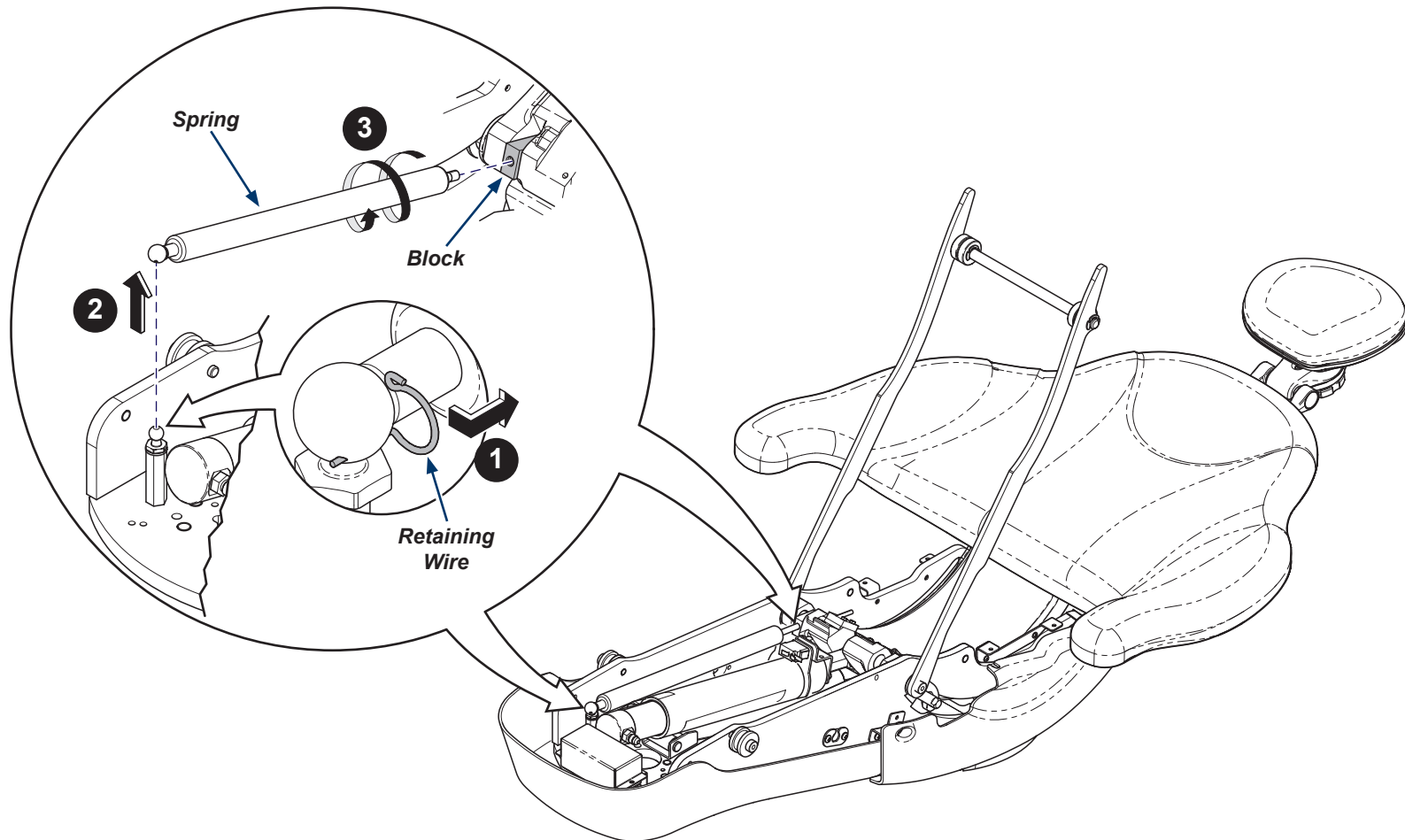


**Caution**

Retraction spring under pressure.

Step 5: Remove retraction spring.

- A) Make sure seat back is fully down by pressing on seat back and/or pressing override (P button) while pressing down button on controls. Seat back should not move if in fully down position.
- B) Remove retaining wire.
- C) Move spring off stud.
- D) Remove spring from clevis block.





Equipment Alert

PC Board is static sensitive.

Step 6: For Procenter L/R ONLY - skip if not equipped.

- A) Remove screws (2) and cover over PC board.
- B) Disconnect wiring and label to reconnect.
- C) Remove PC board and standoffs (4).
- D) Loosen screws (2) and slide PC board mounting bracket out.

Note: It may be necessary to loosen ground wire screws to remove mounting bracket.

Screw

PC Board

Standoff



Equipment Alert

Position spacer block with spacing on both sides of slot. Ensure the spacer block does not protrude past the brake standoff. Failure to do so will create rotation drag.

Step 7: Installing Spacer Stop Block. - For Chair ONLY

- A) If new Pivot Brake Assembly Kit (002-10429-00) is installed skip to next step.
- B) Clean surface of brake standoff and peel backing from tape on spacer block.
- C) Adhere spacer block to brake standoff. Release rotation brake and rotate chair towards the patient's left to secure spacer block to standoff tightly.

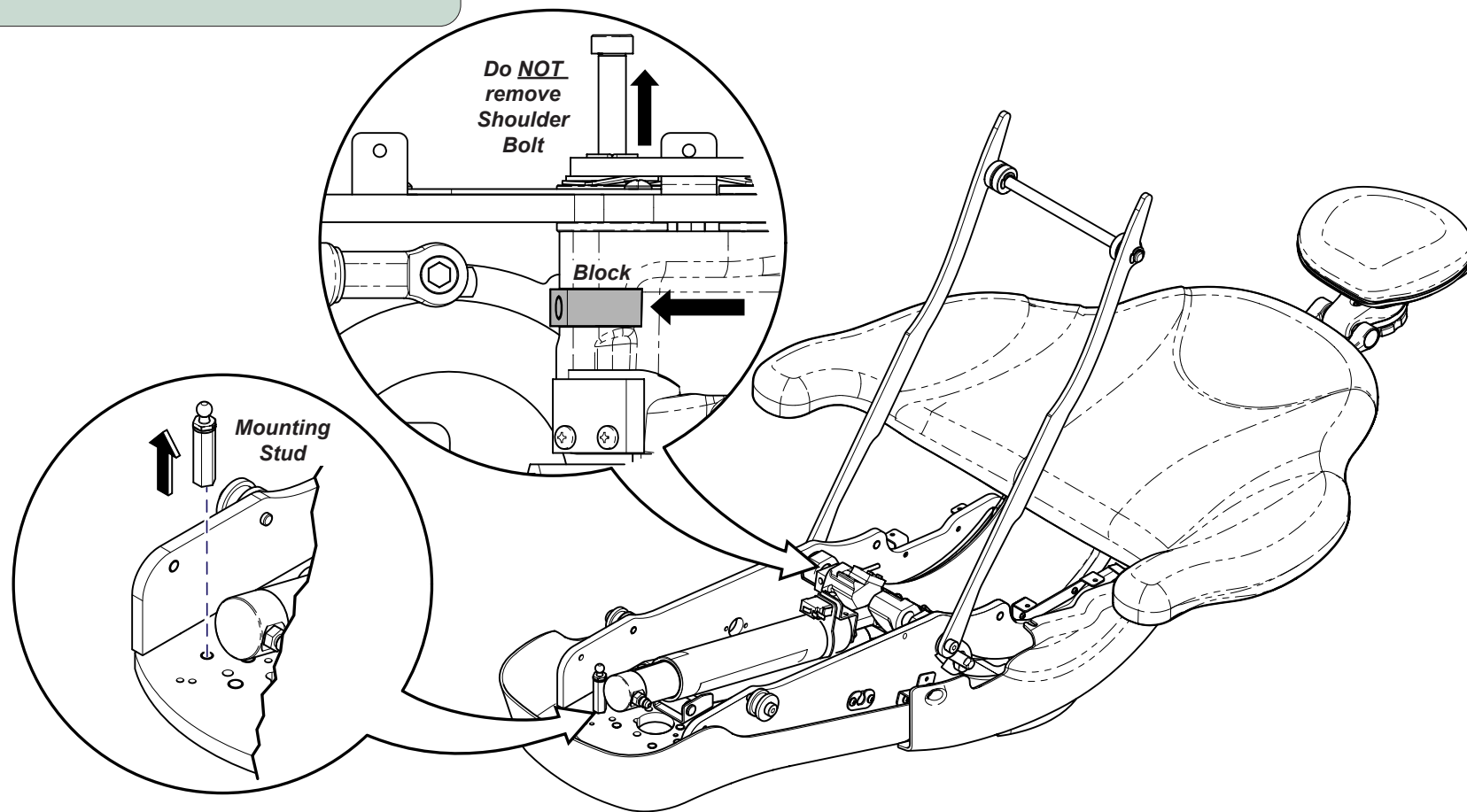
Backing of Tape

Spacer Block

Clean

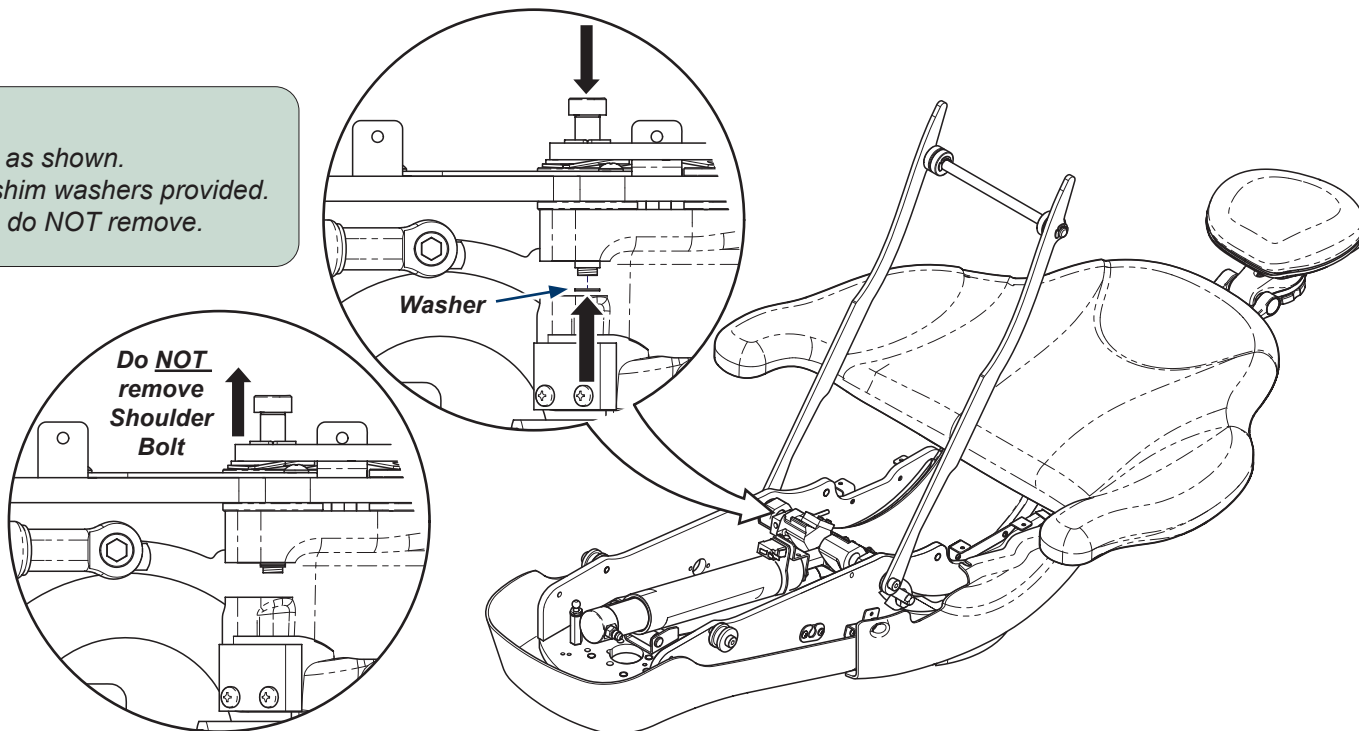
Step 8: Remove mounting hardware.

- A) Remove mounting stud in front of chair.
- B) Loosen shoulder bolt on side of chair, do NOT remove.
- C) Remove spring mounting block.



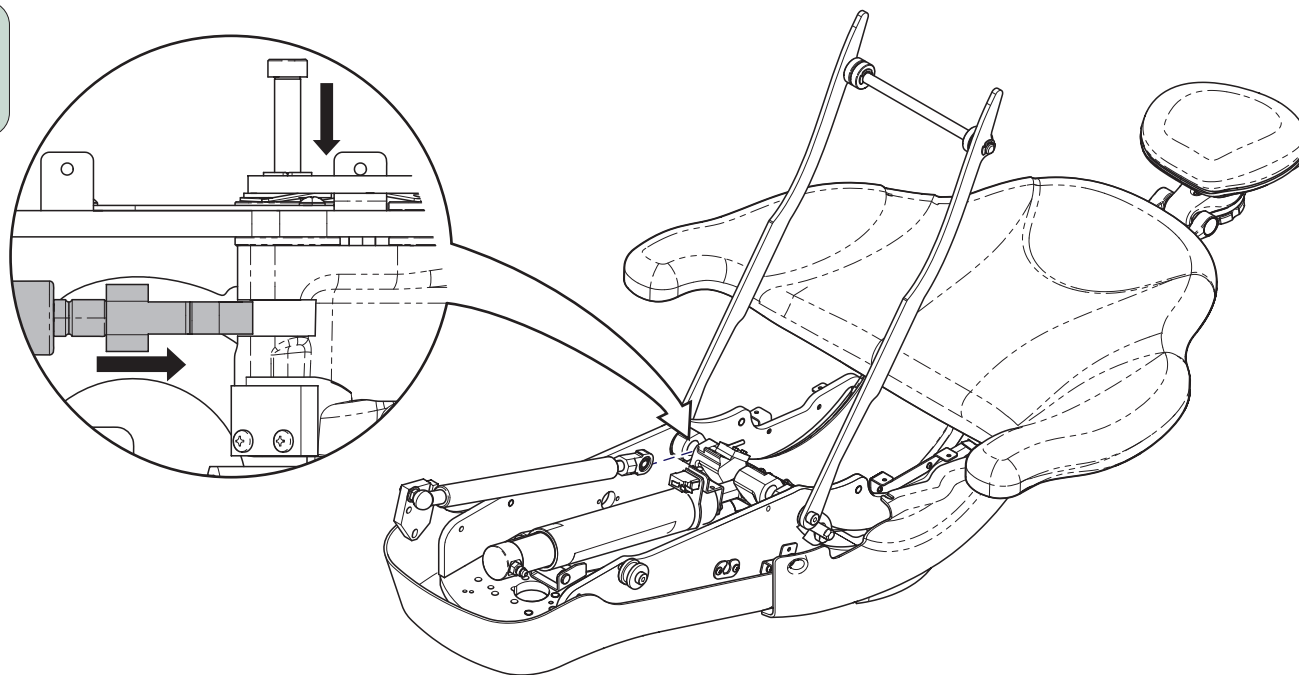
Step 9: Install shim washer.

- A) Push shoulder bolt in to show threaded end as shown.
- B) Install one shim washer over threads. Two shim washers provided.
- C) Push shoulder bolt out to install new spring, do NOT remove.



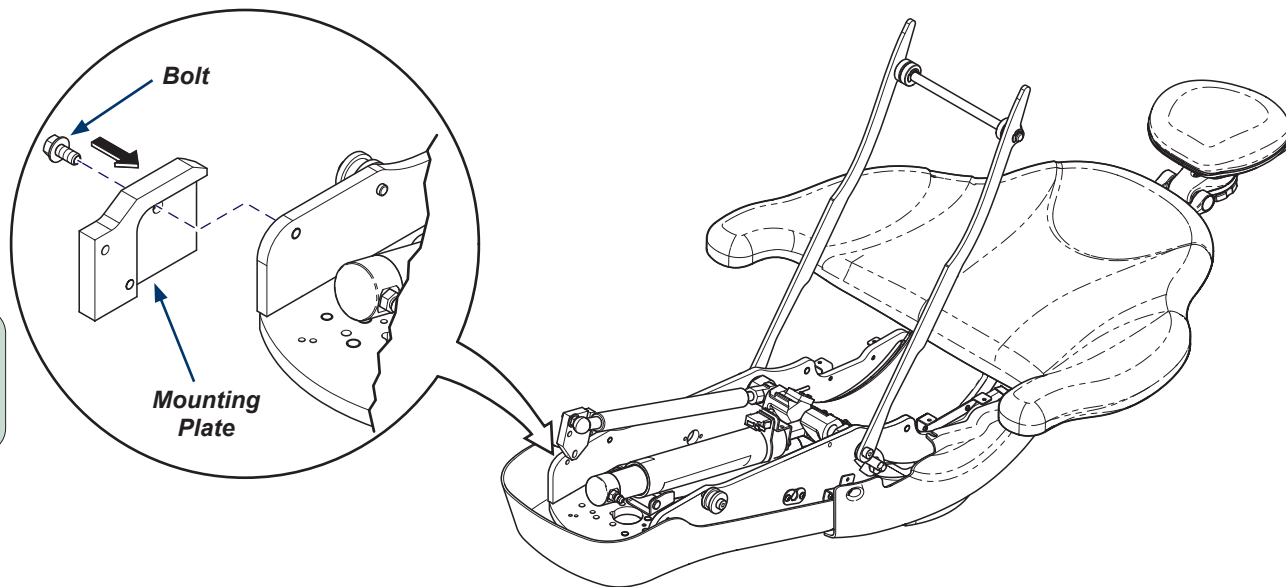
Step 10: Install retraction spring.

- A) Install rear of spring into seat back.
- B) Secure with shoulder bolt on side of chair.



Step 11: Install mounting plate.

- A) Slide mounting plate onto the front frame of chair.
- B) Secure with bolt.

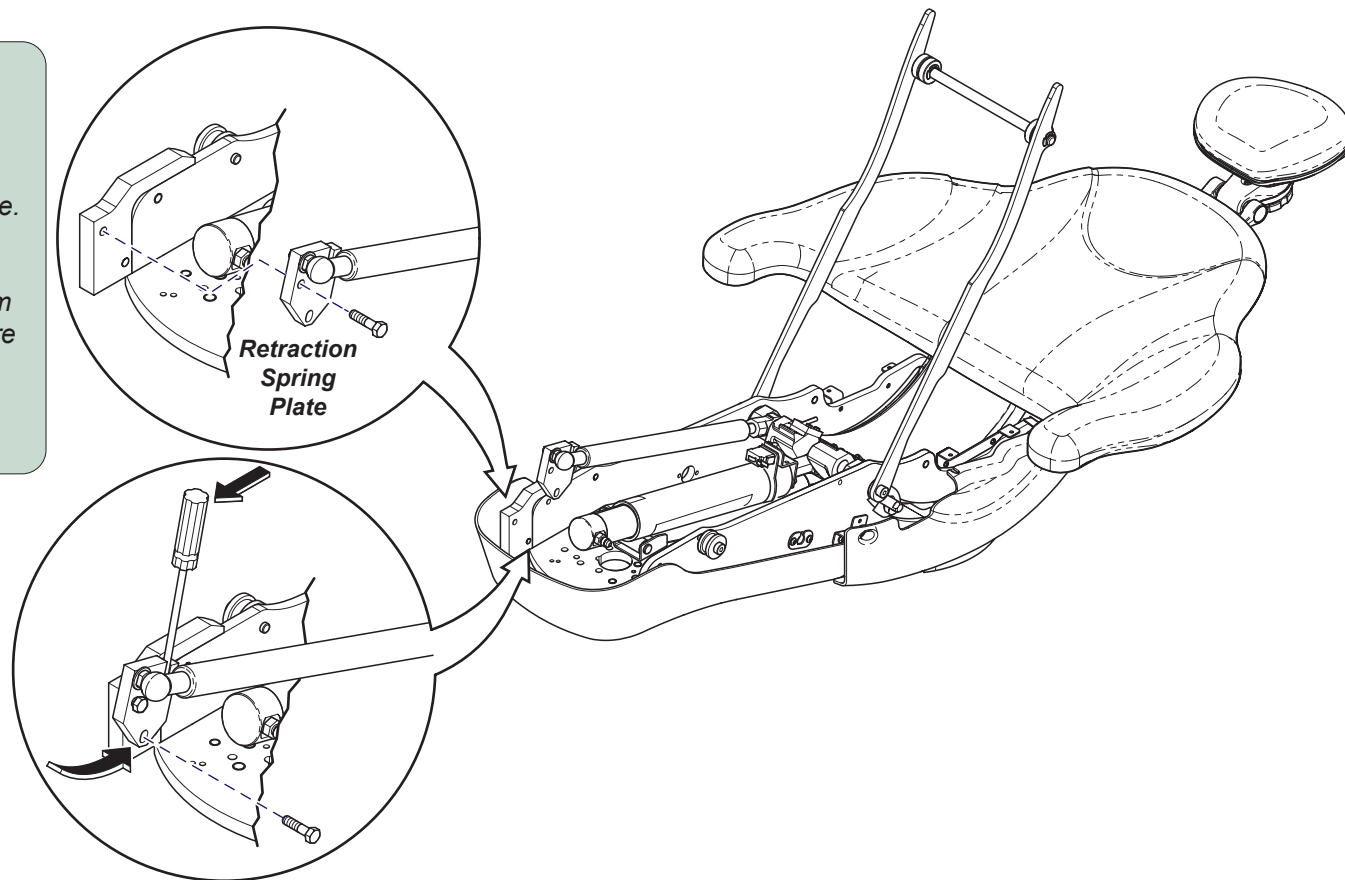


Caution

Retraction spring under pressure.

Step 12: Install retraction spring.

- A) Move retraction spring forward to mounting plate.
- B) Install front of retraction spring plate to top hole of mounting plate with bolt without tightening.
- C) Place screwdriver in slot as shown to pry bottom of retraction spring plate into position and secure with bolt.
- D) Tighten both bolts to secure retraction spring plate to mounting plate.

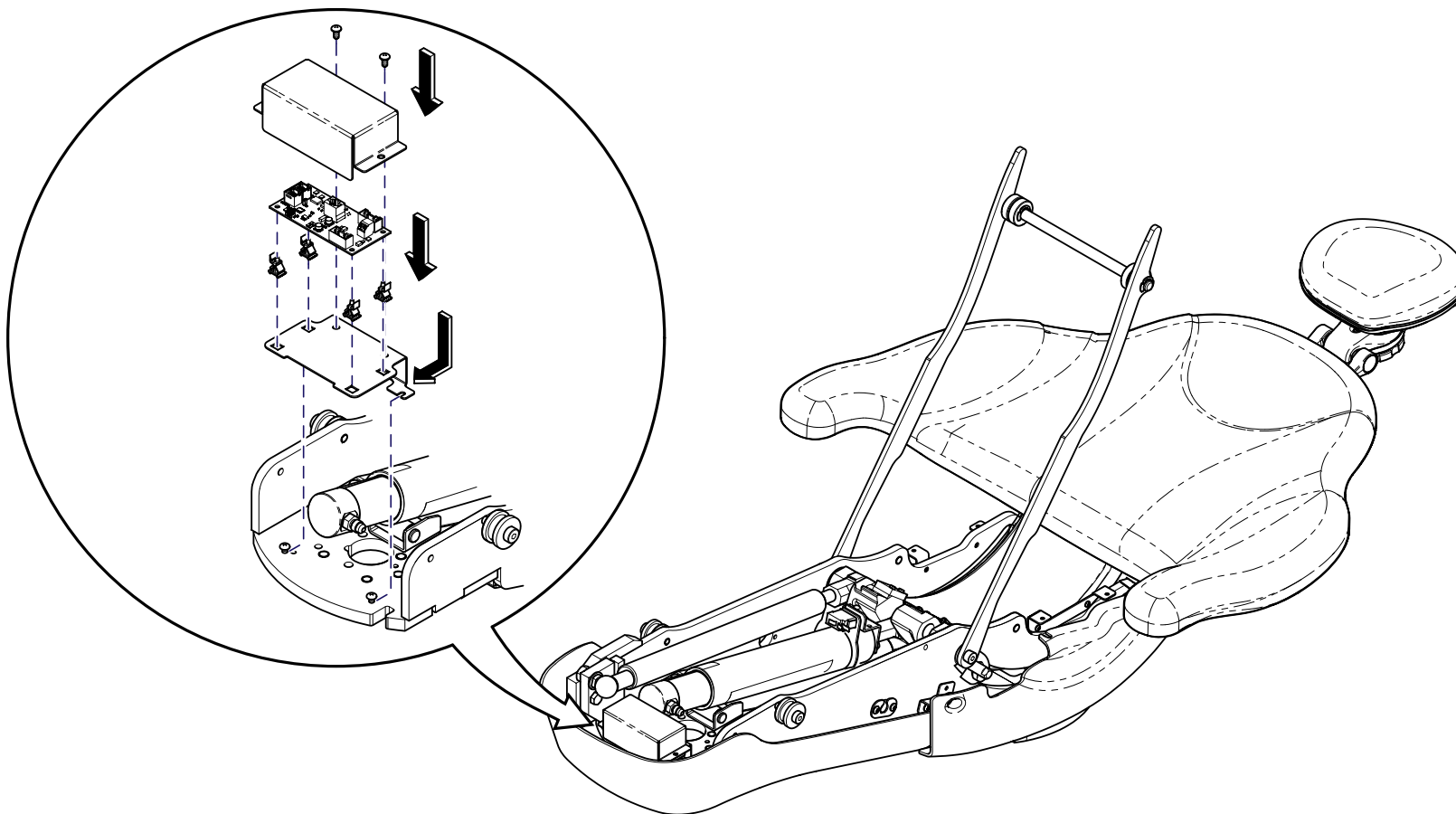


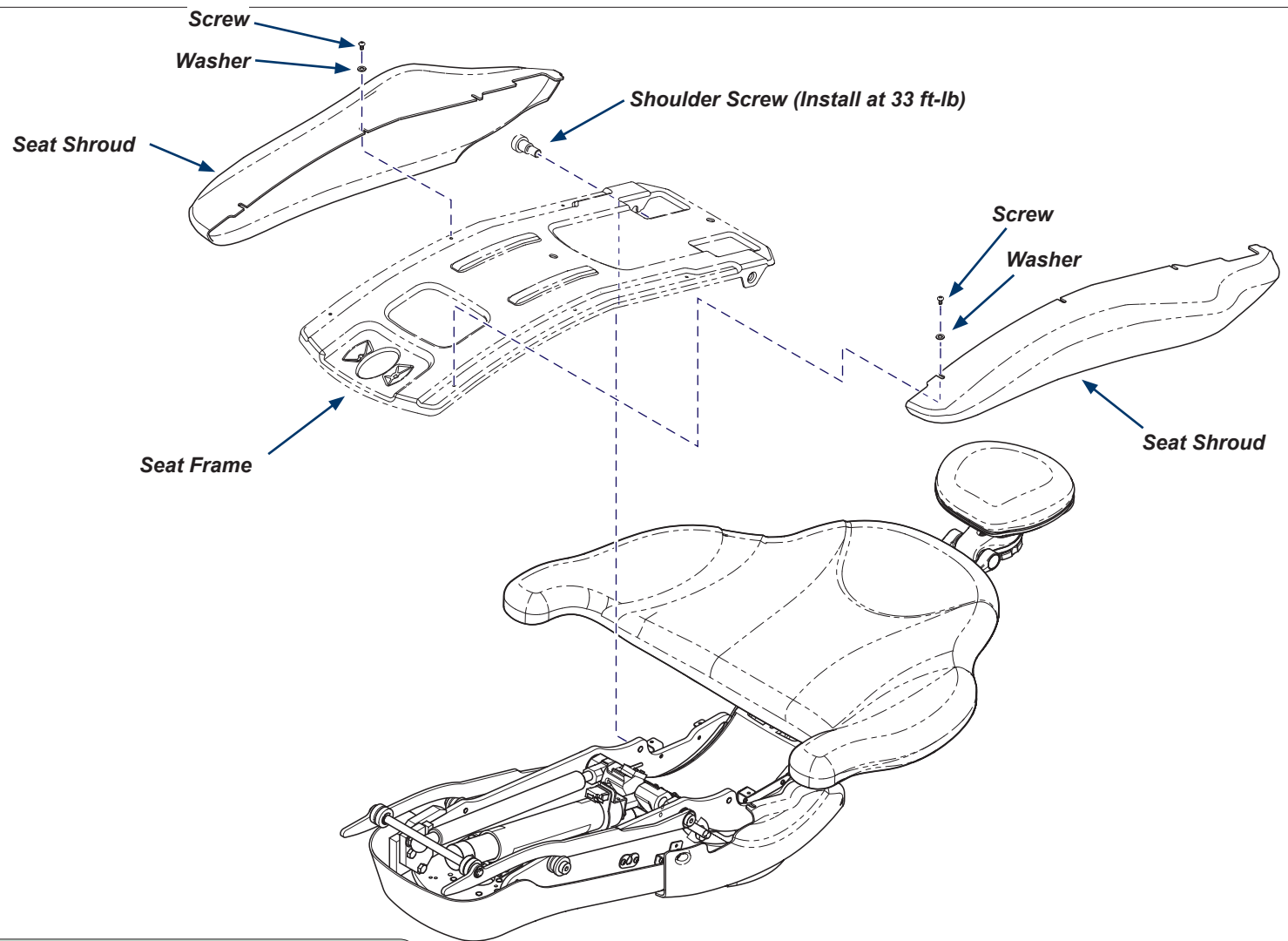


Equipment Alert
PC Board is static sensitive.

Step 13: For Procenter L/R ONLY - skip if not equipped.

- A) Install PC board mounting bracket onto screws (2).
- B) Tighten ground wire screws to ensure they are secured.
- C) Install standoffs and PC board.
- D) Connect wiring to PC Board connectors.
- E) Install cover over PC board with screws (2).





Caution

Verify frame top cover and frame covers do not contact the carriage casting.

Step 7: Finalize installation.

- A) Install any remaining covers/components may need to refer to rotation brake install kit to ensure all covers are on if installing both kits.
- B) Connect chair to power source.
- C) Ensure power is restored for hydraulic functions.
- D) Refer to User Guide to Re-calibrate chair after installation of covers.
- E) Verify operation.

Note: Shoulder Screws need torqued down 33 ft-lb when reinstalling seat frame.