

Power Inlet kit [002-10454-00]

Applies to Models:

230 (all)
630 (-001 thru -009)
641 (all)
647 (all)

Special Tools:

none

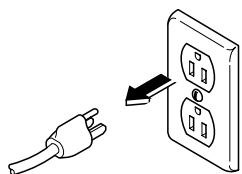
Note

For rotational models, refer to product Service and Parts manual.



Caution

Always disconnect power to chair before removing covers or performing any service procedures.

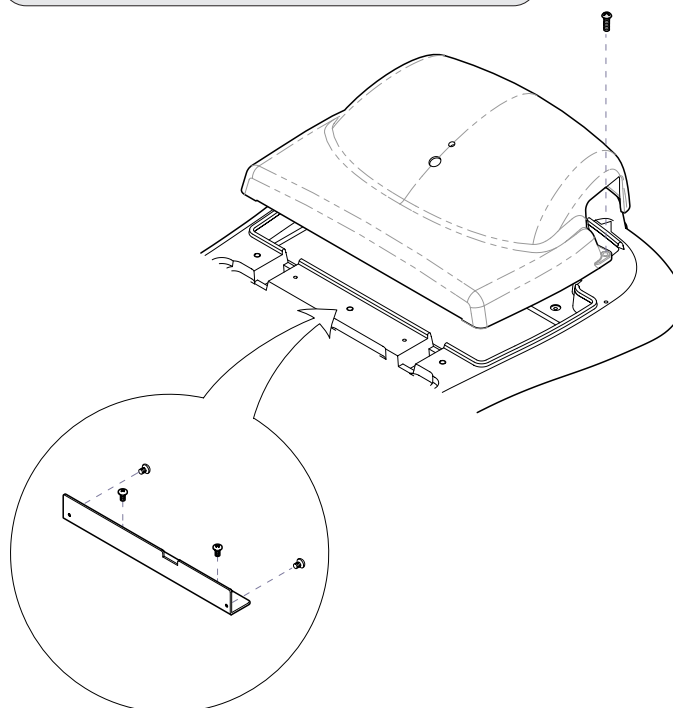


Equipment Alert

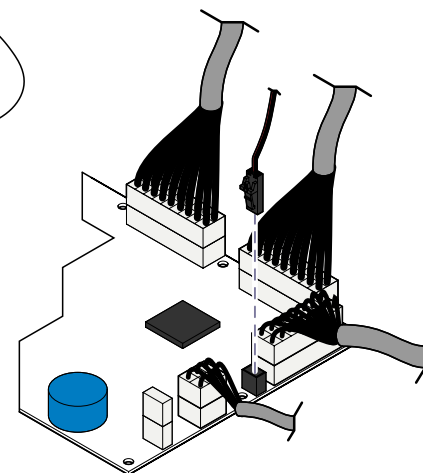
You must perform Step 2 before cover can be completely removed.

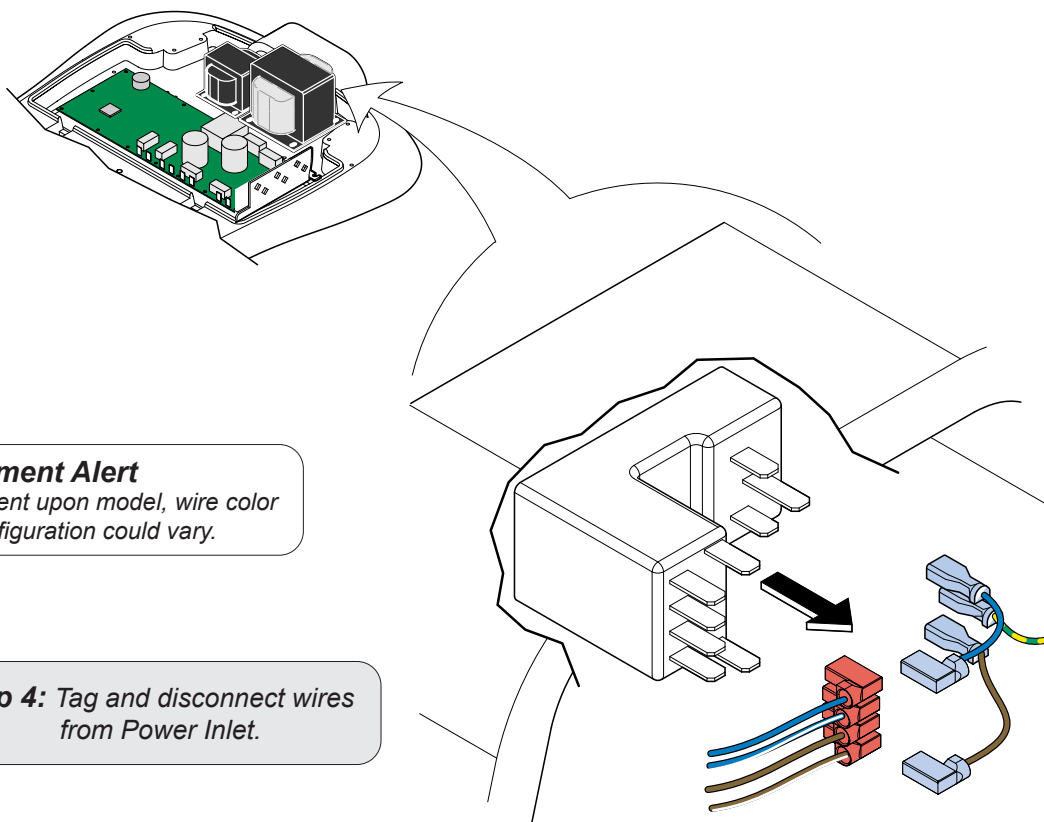
Step 1: Remove two screws, then partially separate cover.

Step 3: Remove wire harness cover. (if necessary)



Step 2: Disconnect Power Light harness.





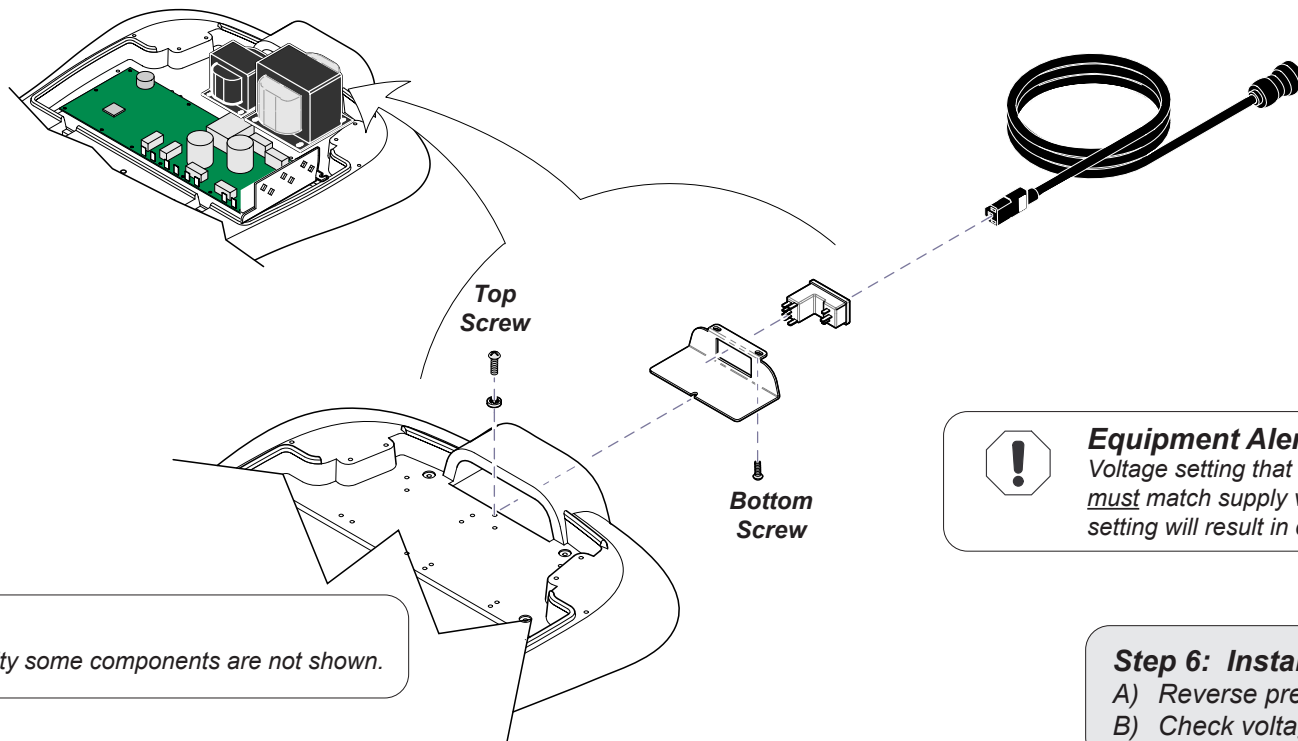
Equipment Alert

Dependent upon model, wire color and configuration could vary.

Step 4: Tag and disconnect wires from Power Inlet.

Step 5: Remove Power Inlet.

- A) Disconnect power cord from Power Inlet.
- B) Remove two bottom screws.
- C) Loosen top screw.
- D) Separate Inlet Plate from base by pulling straight out.
- E) Remove Power Inlet from Inlet Plate.



Note

For clarity some components are not shown.



Equipment Alert

Voltage setting that shows through window must match supply voltage. Incorrect voltage setting will result in damage to the chair.

Step 6: Installation.

- A) Reverse previous steps.
- B) Check voltage setting (see next page).

**Caution**

Always disconnect power to chair before removing covers or performing any service procedures.

**Equipment Alert**

Voltage setting that shows through window must match supply voltage. Incorrect voltage setting will result in damage to the chair.

Voltage Conversion Procedure:

- A) Open fuse holder cover.
- B) Remove fuse holder.
- C) Flip fuse holder 180°.
- D) Reinsert fuse holder.
- E) Close fuse holder door.

