

Pivot Brake Kit (complete)

[002-10470-00]

Pivot Brake Lock Plate Kit

[002-10471-00]

Pivot Brake Solenoid Assembly Kit

[002-10472-00]

Note

Torque wrench should be capable of 33 ft-lbs (44.7 Nm).

Components:

FOR COMPLETE KIT

Solenoid Assembly 1

Locking Pin 1

Spring 1

Spring Post 1

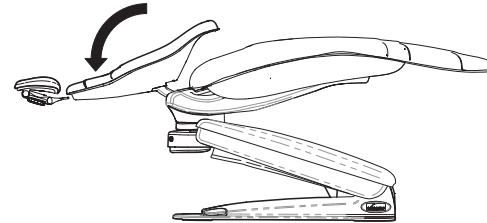
Locking Plate 1

Special Tool:

Torque wrench with and without 1 1/8" crows foot

Step 1: Position chair.

- A) Move chair back to FULL DOWN position.
- B) Raise / lower chair to a comfortable working height.

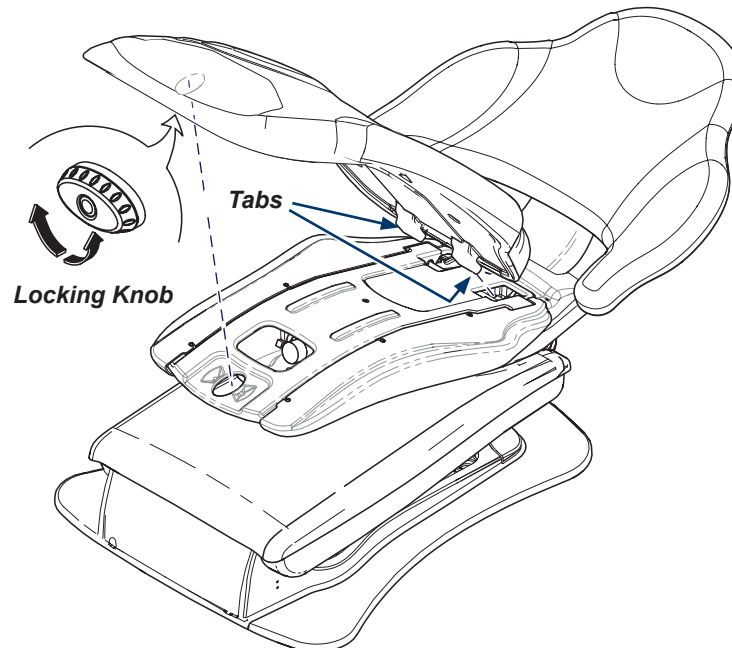


WARNING

Always disconnect power source before removing any covers. Failure to do so may result in personal injury.

Step 2: Remove seat upholstery.

- A) Disconnect power source.
- B) Rotate seat locking knob.
- C) Lift seat upholstery, then pull to release tabs from frame.



Note: Retain all shrouds, frame and mounting hardware for re-use.

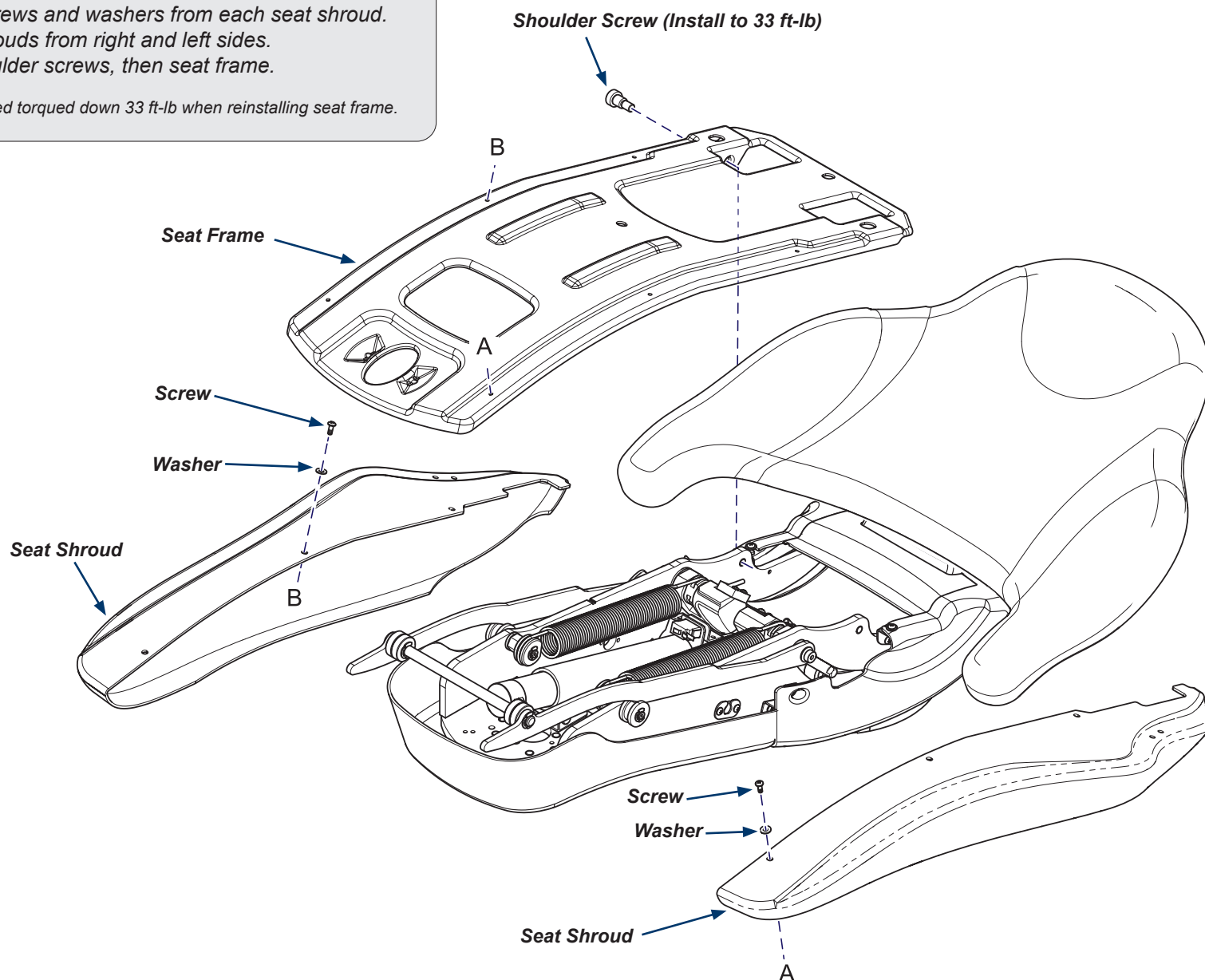
Step 3: Remove shrouds and frame.

A) Remove three screws and washers from each seat shroud.

B) Remove seat shrouds from right and left sides.

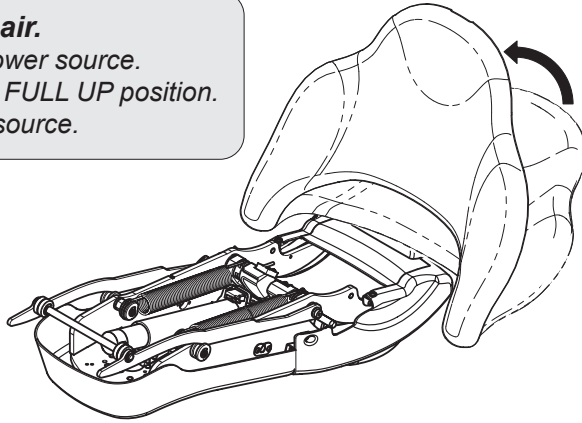
C) Remove two shoulder screws, then seat frame.

Note: Shoulder Screws need torqued down 33 ft-lb when reinstalling seat frame.



Step 4: Position chair.

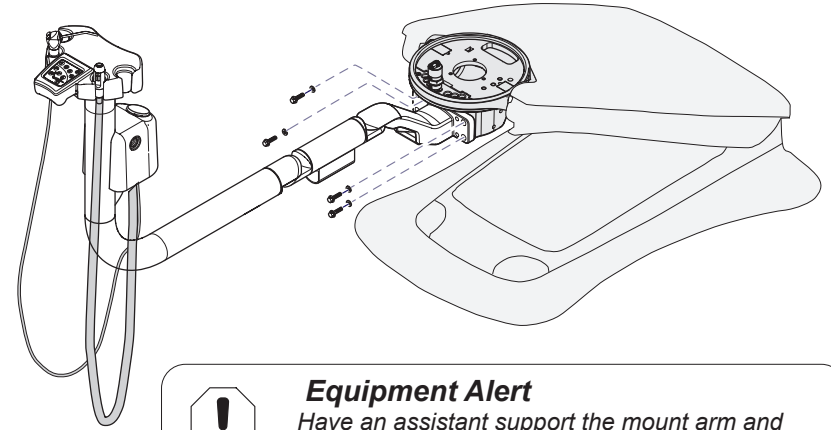
- A) Connect chair to power source.
- B) Move chair back to FULL UP position.
- C) Disconnect power source.



Note: If not your chair is not equipped with a rear assistants mount arm proceed to next step.

Step 6: Remove rear assistants mount arm. (if equipped).

- A) Support Rear Assistants Mount Arm.
- B) Remove four hex head screws and washers.
- C) Remove Mount Arm.

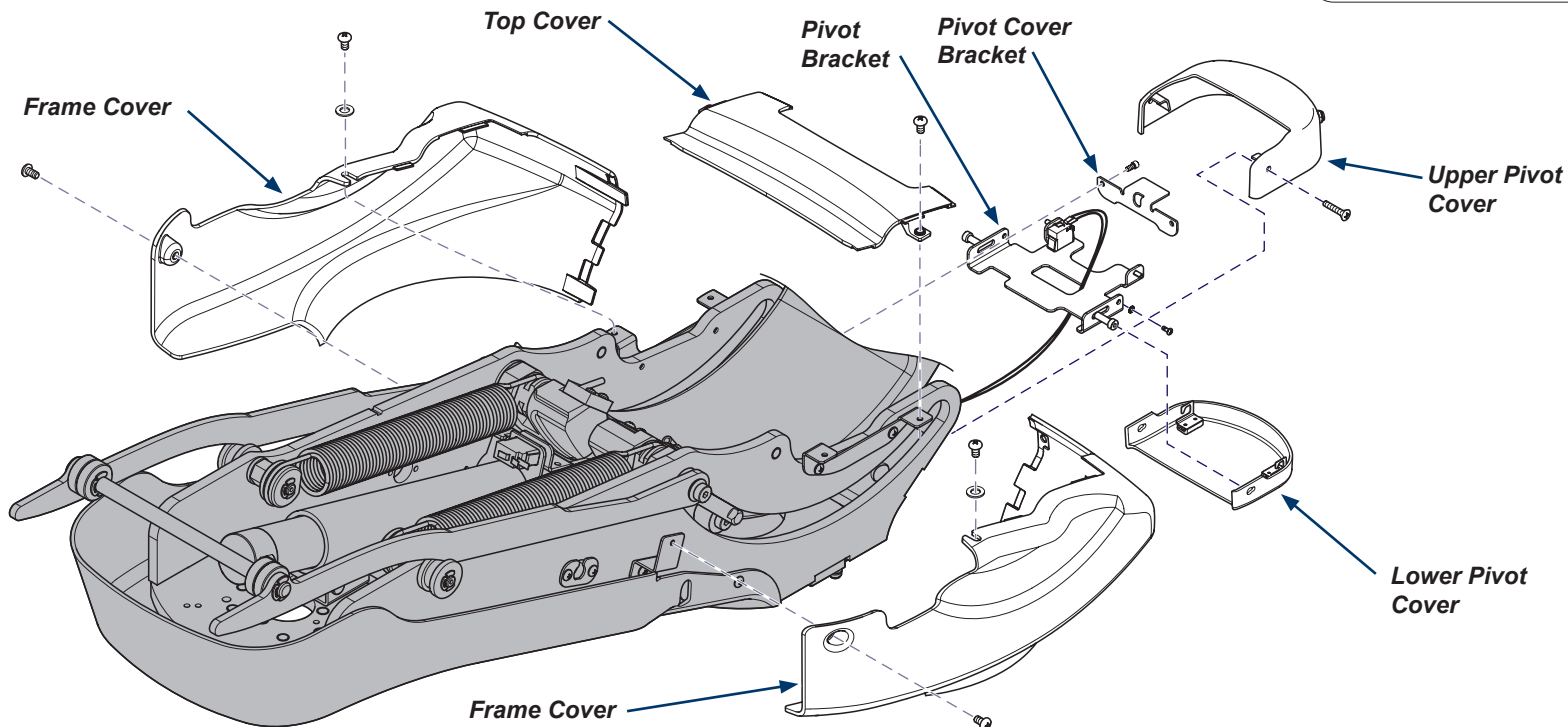


Equipment Alert

Have an assistant support the mount arm and steady all pivot points to prevent damage to the equipment.

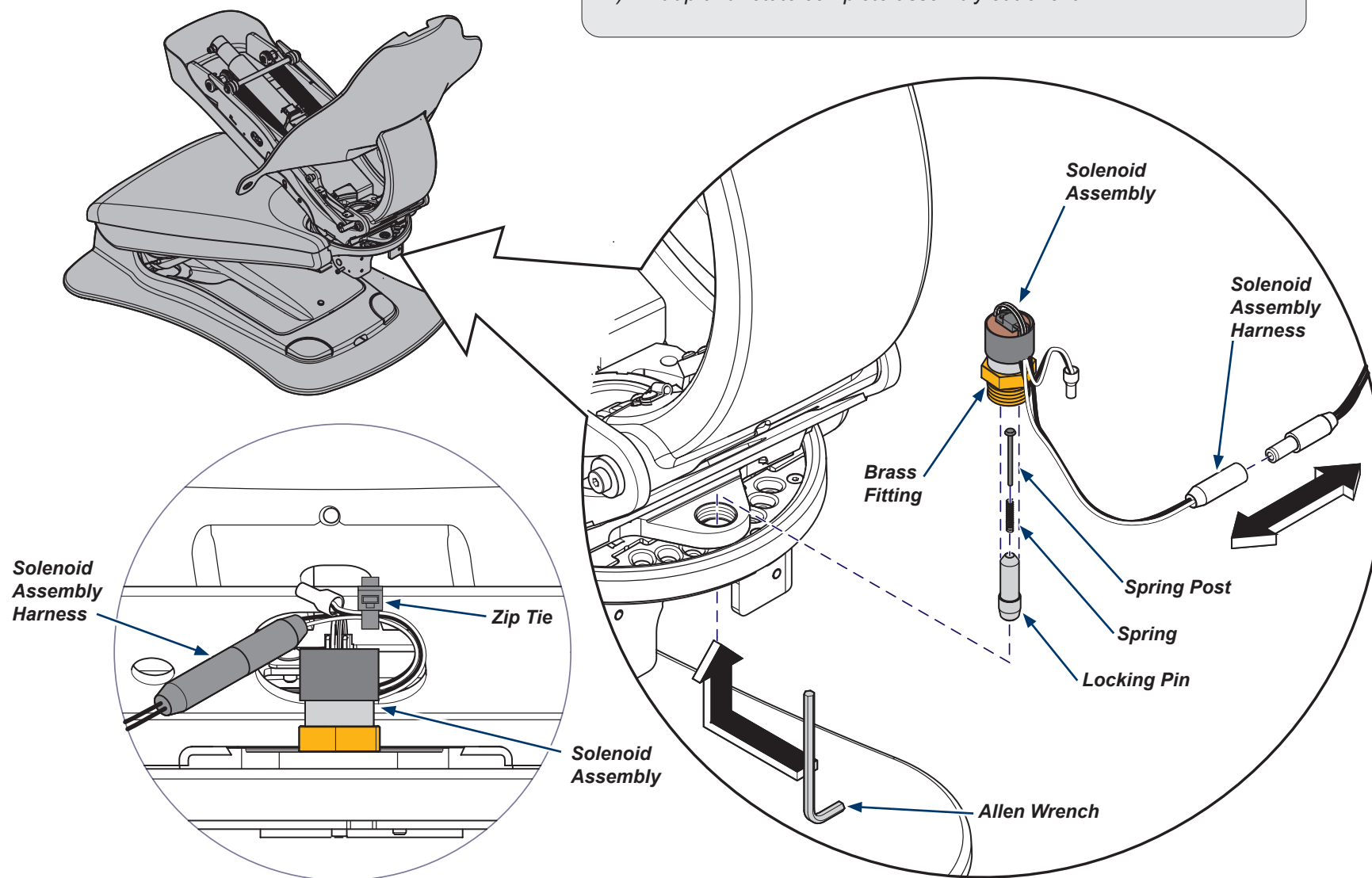
Step 5: Remove frame/top/pivot covers, then pivot/pivot cover brackets.

- A) Remove right and left frame covers.
- B) Remove Top Cover.
- C) Remove Upper and Lower Pivot Covers.
- D) Remove Pivot Bracket and Pivot Cover Bracket.



Step 7: Remove brake solenoid.

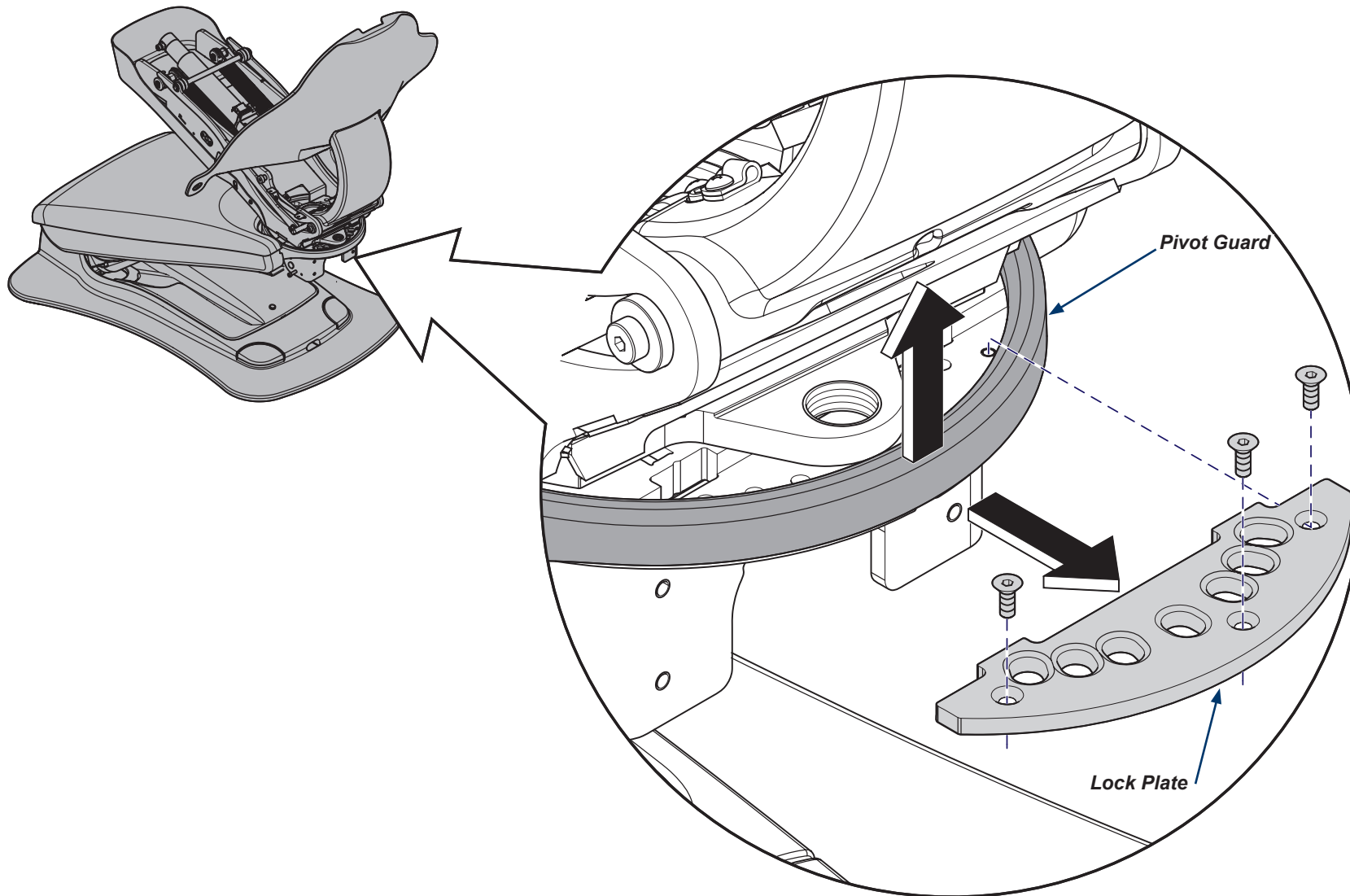
- A) Cut and remove Zip Tie securing Solenoid Assembly Harness.
- B) Unplug Solenoid Assembly Harness.
- C) Unthread Brake Solenoid Assembly from chair at Brass Fitting.
- D) Use Allen Wrench to compress Spring Post, Spring, and Locking Pin up into Solenoid Assembly.
- E) Lift up and rotate complete assembly out of chair.



Note: If not replacing Lock Plate proceed to next step.

Step 8: Replace lock plate.

- A) Remove three allen screws from top of Lock Plate.
- B) Flex Pivot Guard up high enough to slide Lock Plate out rear of chair.
- C) Flex Pivot Guard up high enough to slide new Lock Plate into rear of chair and secure with three allen screws.



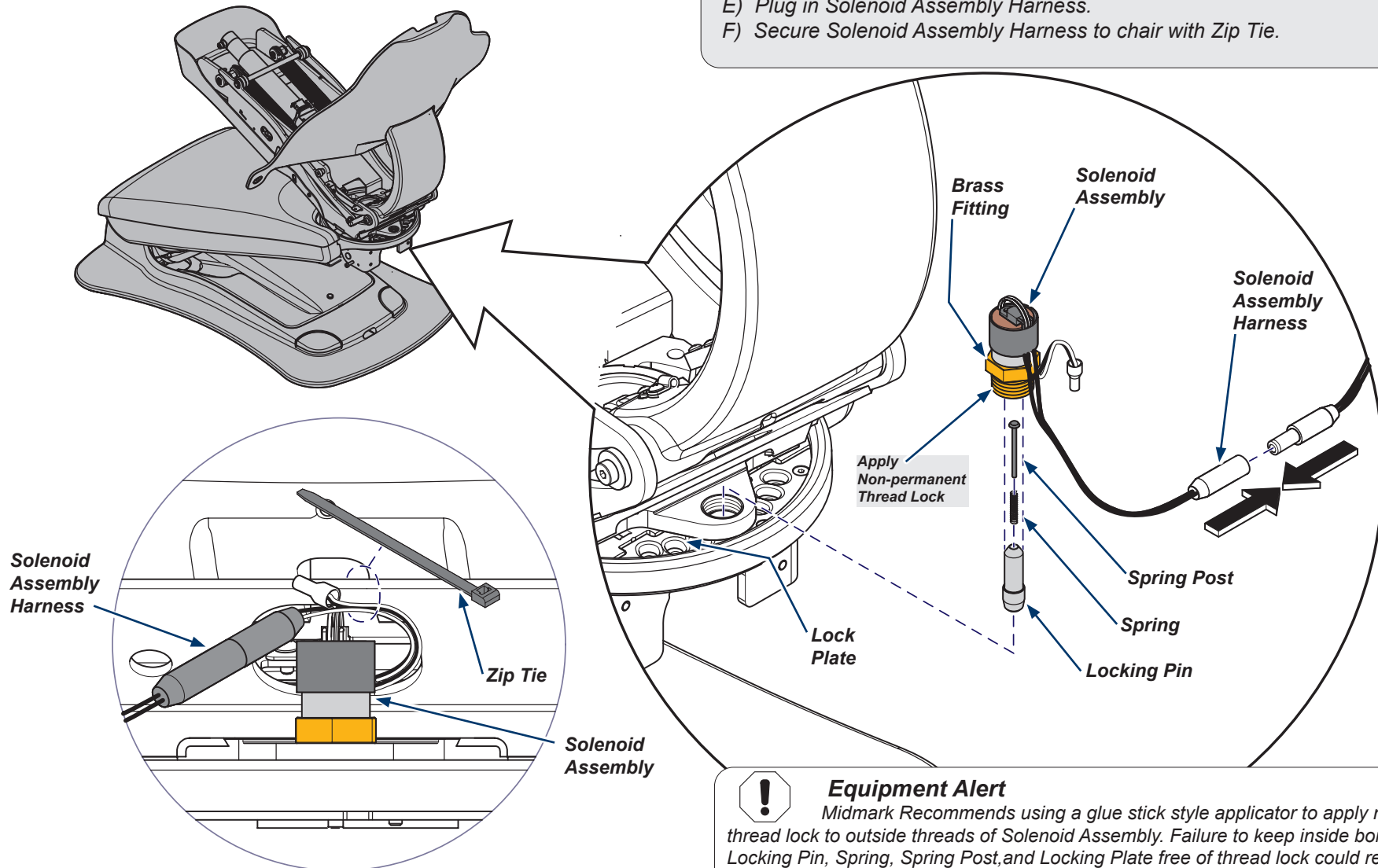


Equipment Alert

To prevent damage do not overtighten Brake Solenoid Assembly.

Step 9: Install brake solenoid.

- A) Install Spring Post, Spring, and Locking Pin up into Solenoid Assembly.
- B) Apply non-permanent threadlock to outside threads of Solenoid Assembly.
- C) Lower and rotate complete assembly into rear of chair.
- D) Tighten Brake Solenoid Assembly to 13-18 FT-LBS at 1 1/8" Brass Fitting.
- E) Plug in Solenoid Assembly Harness.
- F) Secure Solenoid Assembly Harness to chair with Zip Tie.



Equipment Alert

Midmark Recommends using a glue stick style applicator to apply non-permanent thread lock to outside threads of Solenoid Assembly. Failure to keep inside bore of Solenoid, Locking Pin, Spring, Spring Post, and Locking Plate free of thread lock could result in rotation brake not operating properly.



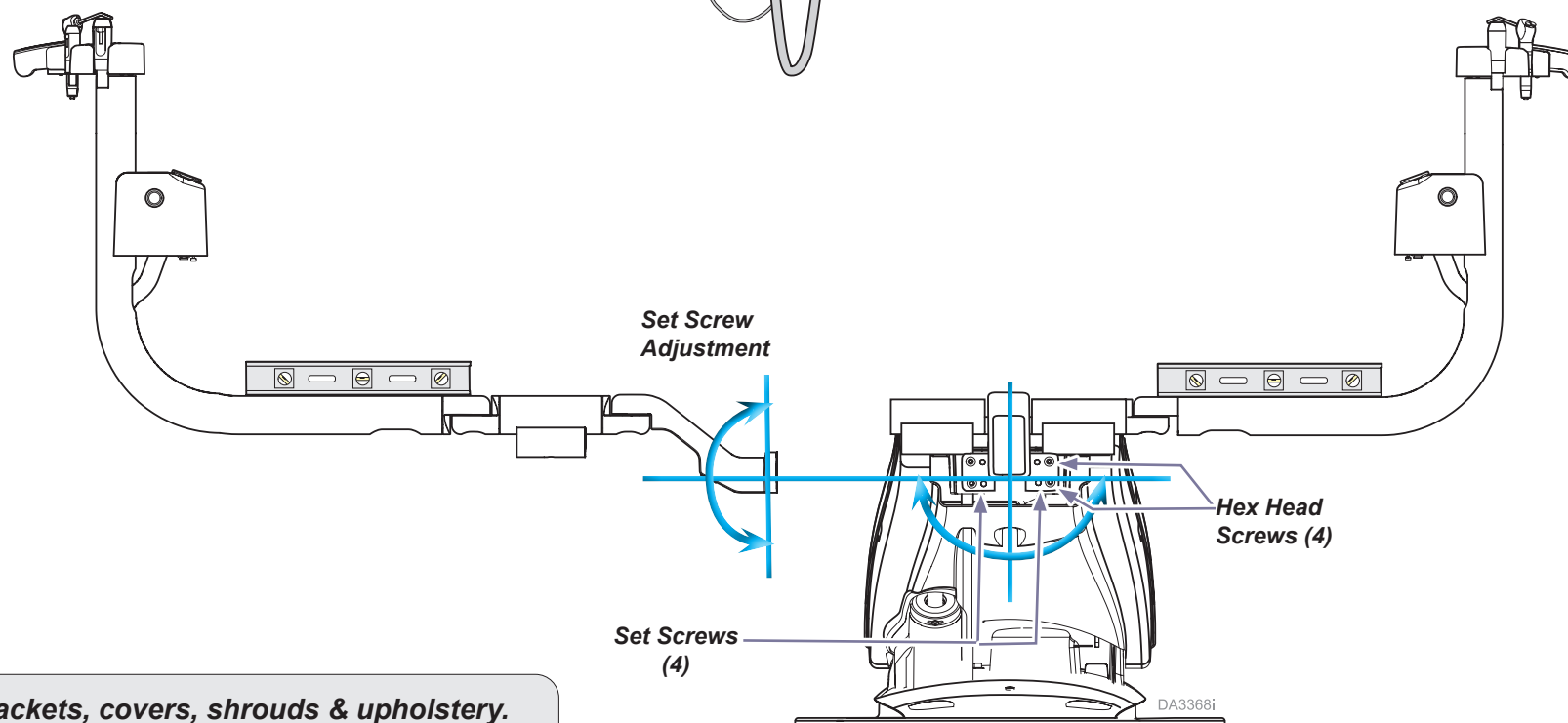
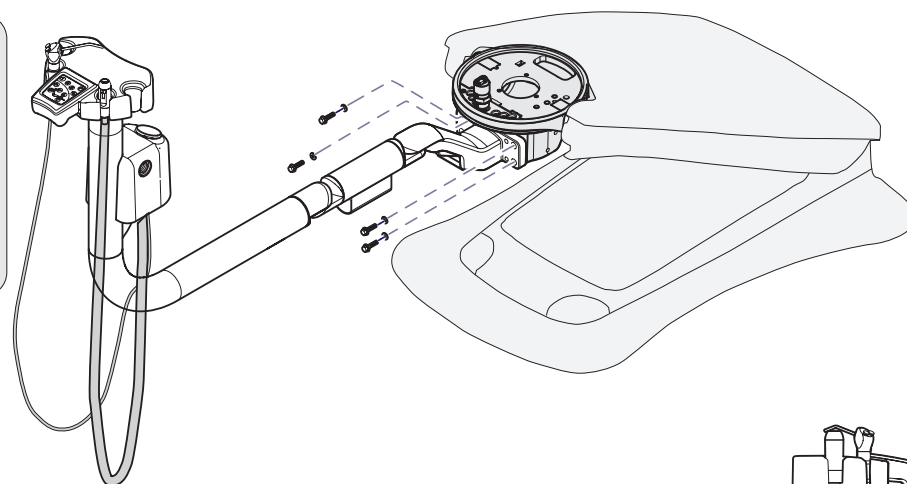
Equipment Alert

Have an assistant support the mount arm and steady all pivot points to prevent damage to the equipment.

Note: If not your chair is not equipped with a rear assistants mount arm proceed to next step.

Step 10: Install rear assistants mount arm. (if equipped).

- A) Mount rear assistant's unit assembly on chair pivot using four hex head screws and washers. Do not tighten hex head screws fully.
- B) Adjust four set screws to level assembly horizontally.
- C) Level vertically by lifting either side of assembly (mounting plate) and tightening hex screws.



Step 11: Reinstall brackets, covers, shrouds & upholstery.

- A) Reinstall bracket, covers, shrouds and upholstery by reversing processes outlined in these instructions.