

Back Lift Cylinder Replacement Kit [002-10475-00] Carriage Roller Replacement Kit [002-10474-00]

Components:

Refer to last page

Special Tools:

Torque wrench

Language of origin: English

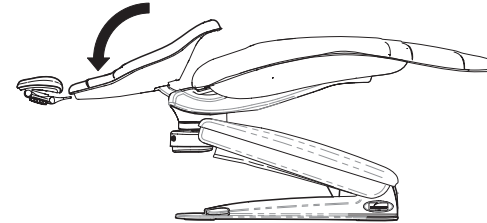
Note

For carriage roller kit, complete Steps 1-6 then Step 14.
Torque wrench should be capable of 33 ft-lbs (44.7

Step 1: Inspect components (See back page).

Step 2: Position chair.

- A) Move the chair back to FULL DOWN position.
- B) Raise / lower the chair to a comfortable working height.

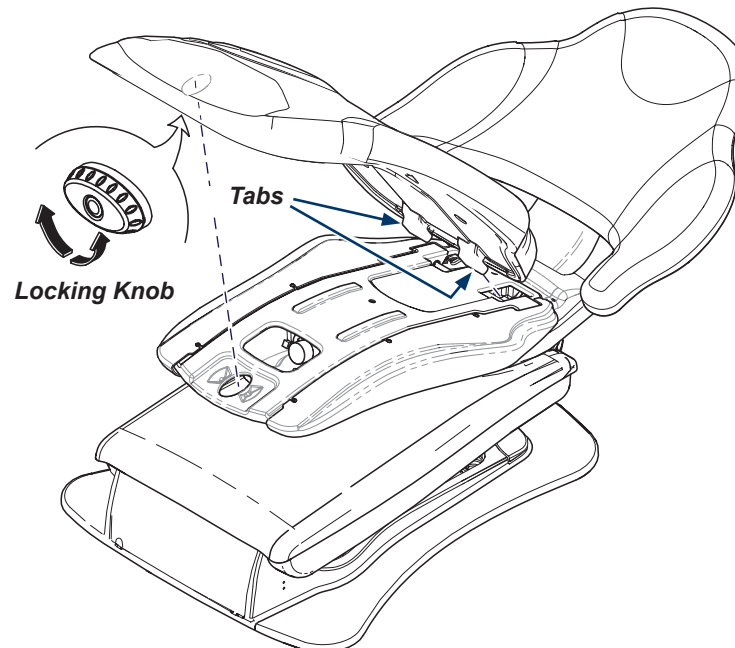


WARNING

Always disconnect the power source before removing any covers. Failure to do so may result in personal injury.

Step 3: Remove seat upholstery.

- A) Disconnect power source.
- B) Rotate seat Locking Knob.
- C) Lift seat upholstery, then pull to release Tabs from frame.



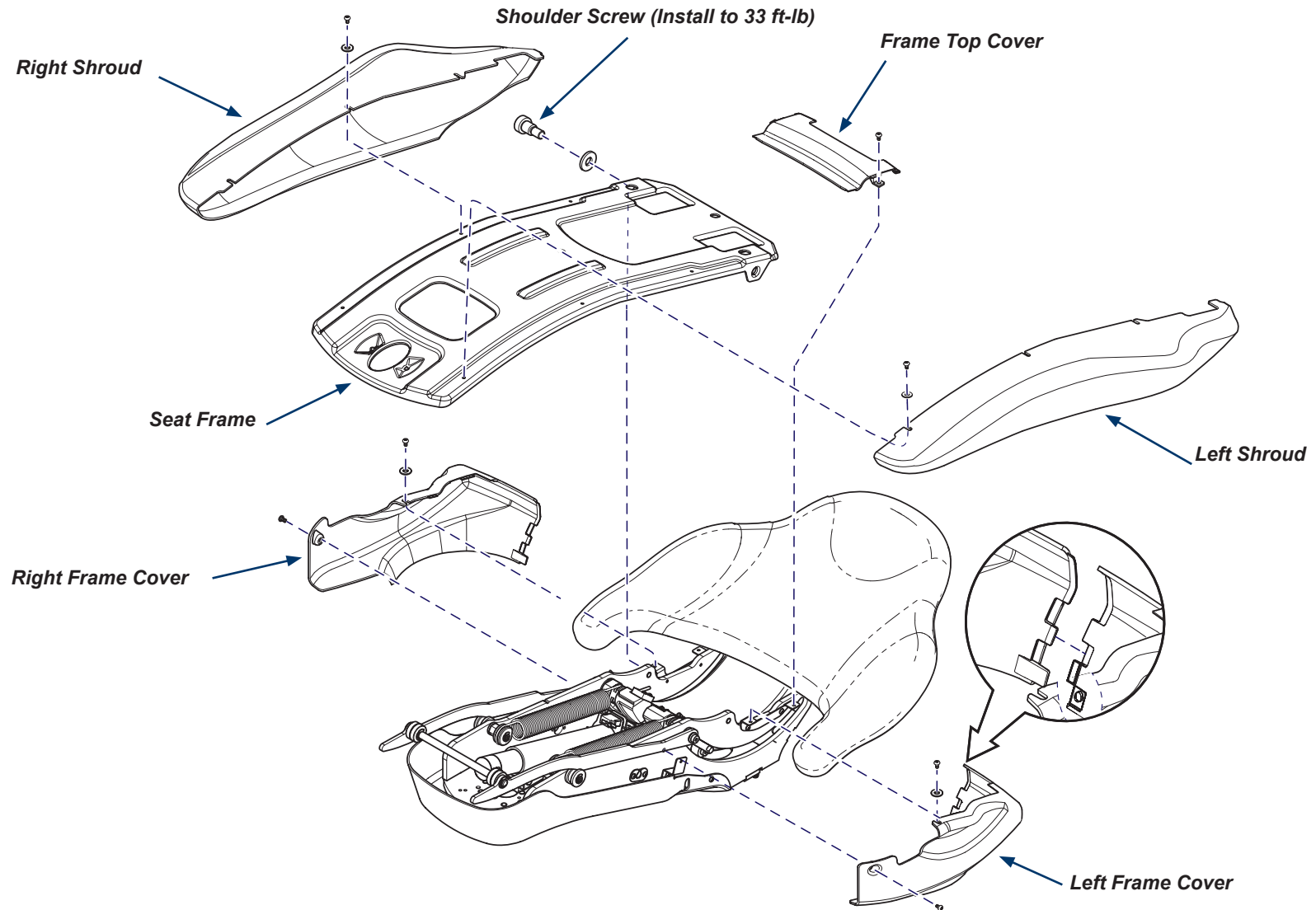
DA4596i

Note: Retain all shrouds, frame and mounting hardware for re-use.

Step 4: Remove covers, shrouds and frame.

- A) Remove Left and Right Seat Shrouds (three screws each).
- B) Remove Left and Right Frame Covers (two screws each).
- C) Remove Frame Top Cover (two screws).
- D) Remove Seat Frame (two shoulder bolts).

Note: Shoulder Screws need torqued down 33 ft-lb when reinstalling seat frame.



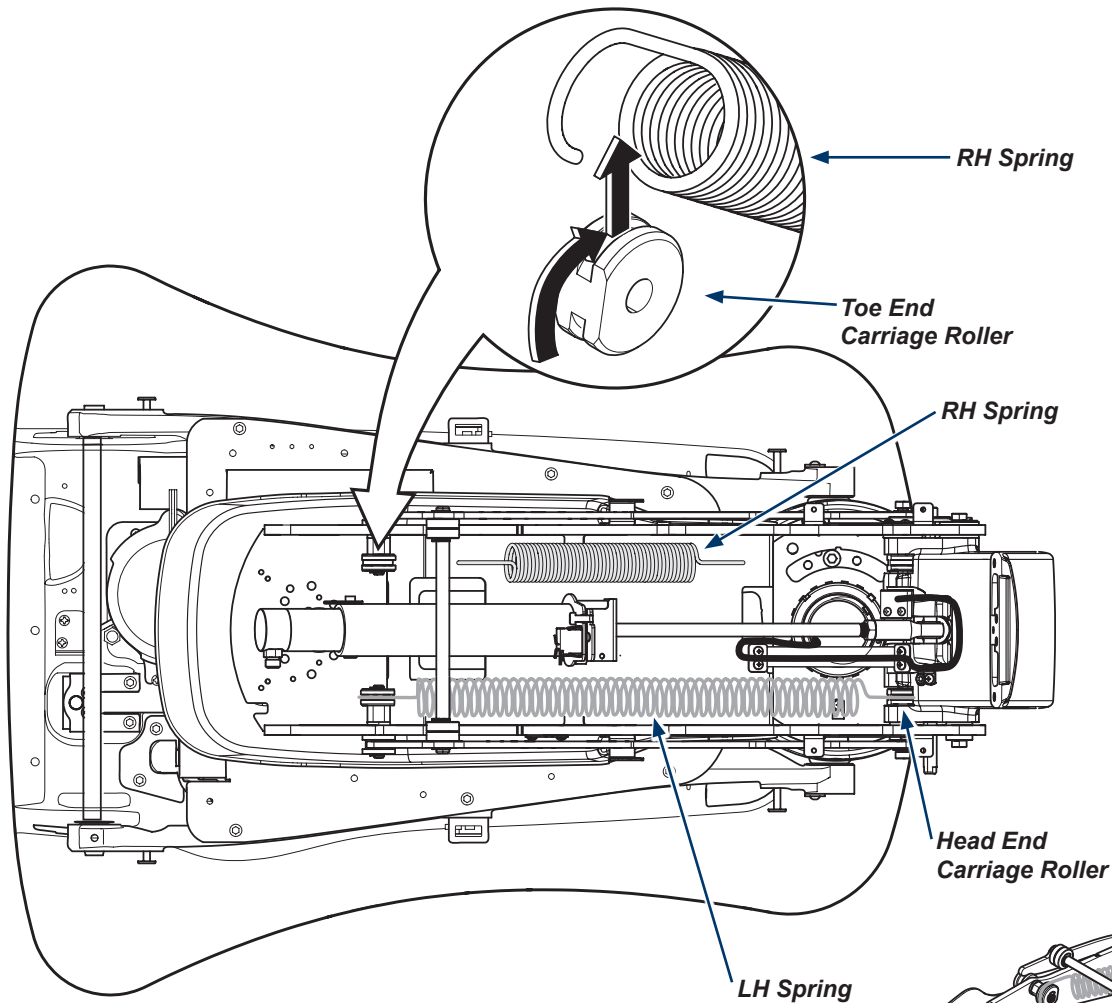


Equipment Alert

Retraction spring under tension if chair back is not fully lowered.

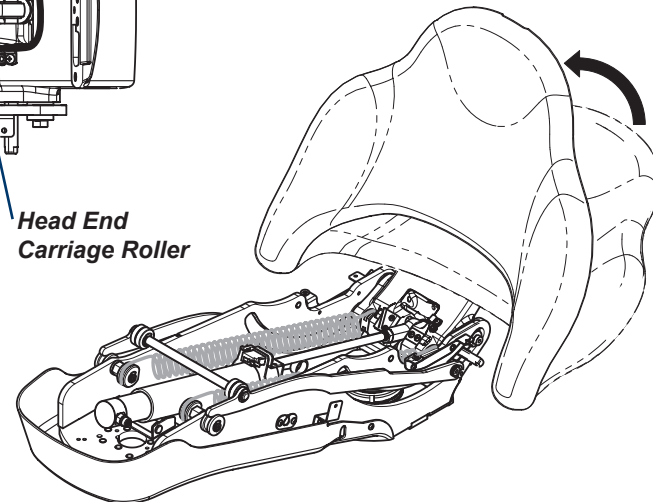
Step 5: Remove retraction springs.

- A) Rotate RH toe end Carriage Roller so flat is facing toe end. Stretch and flex RH Retraction Spring and unhook from toe end Carriage Roller.
- B) Rotate RH head end Carriage Roller so flat is facing head end. Flex RH Retraction Spring and unhook from head end Carriage Roller and remove.
- C) Repeat Steps A & B to remove LH Retraction Spring.



Step 6: Position chair.

- A) Connect chair to power source.
- B) Move chair back to FULL UP position.
- C) Disconnect power source.



**For Carriage Roller Kit, proceed to next step.
For Back Lift Cylinder Kit, continue to Step 8.**



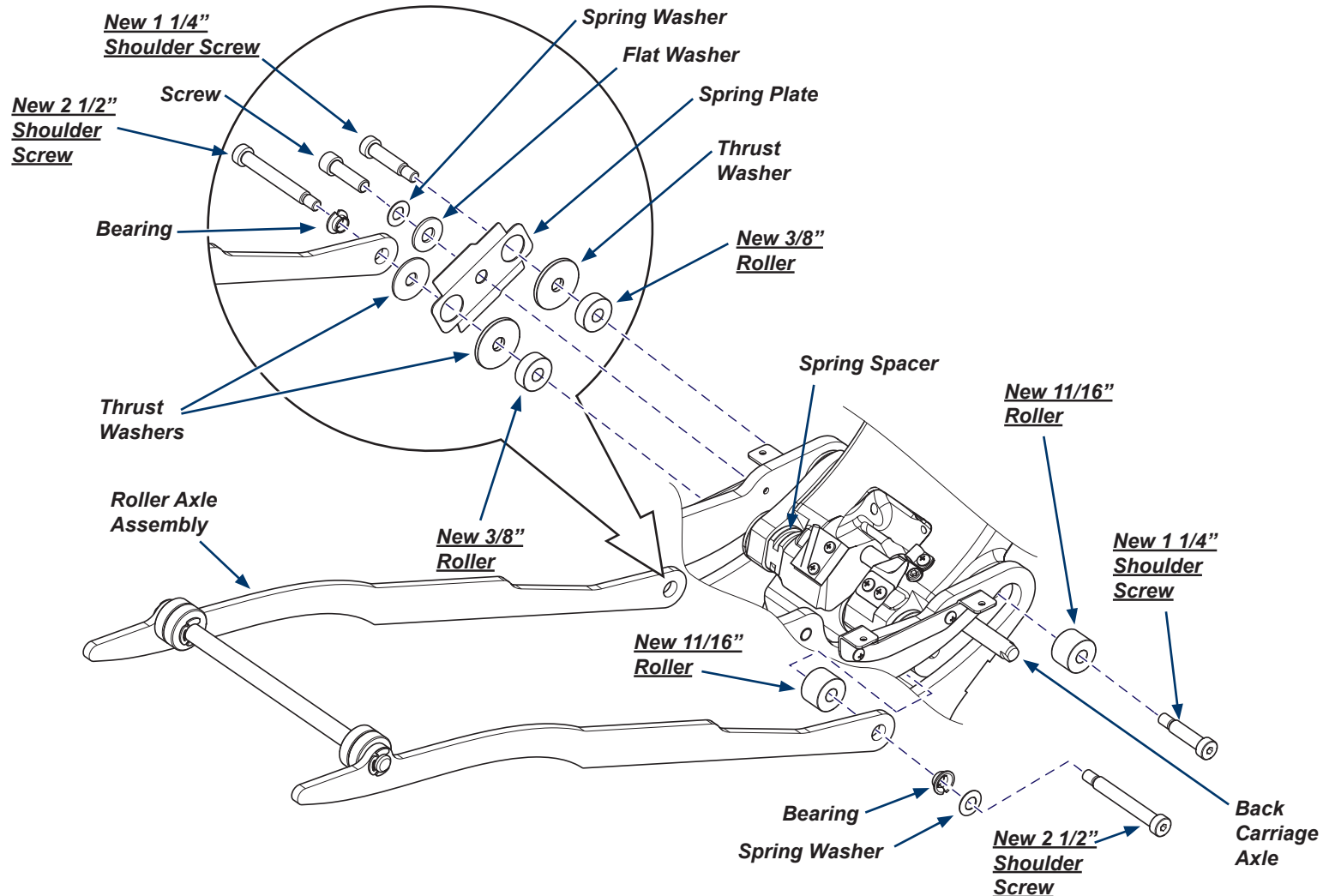
Equipment Alert

DO NOT remove the back carriage axle and Spring Spacer when removing existing components then installing new shoulder screws and rollers.

Note: Retain all removed components that are not new for re-use.

Step 7: Install new shoulder screws and rollers as shown.

- Remove existing shoulder screws, bearing, spring washer and two rollers from right side (facing chair) ONE AT A TIME.
- Install new short shoulder screw and new 11/16 inch wide roller to back right side.
- While keeping spring spacer in place on the front left side, remove existing shoulder screws, screw, bearing, spring plate, thrust & flat washers, and two rollers from left side.
- While keeping spring spacer in place on the front left side, place new 3/8 inch wide rollers, thrust washers, spring plate, roller axle assembly, bearing, new long shoulder screw, new short shoulder screw, and screw then install to left side.
- Install new short shoulder screw, bearing, roller axle assembly and new 11/16 inch wide roller to front right side.

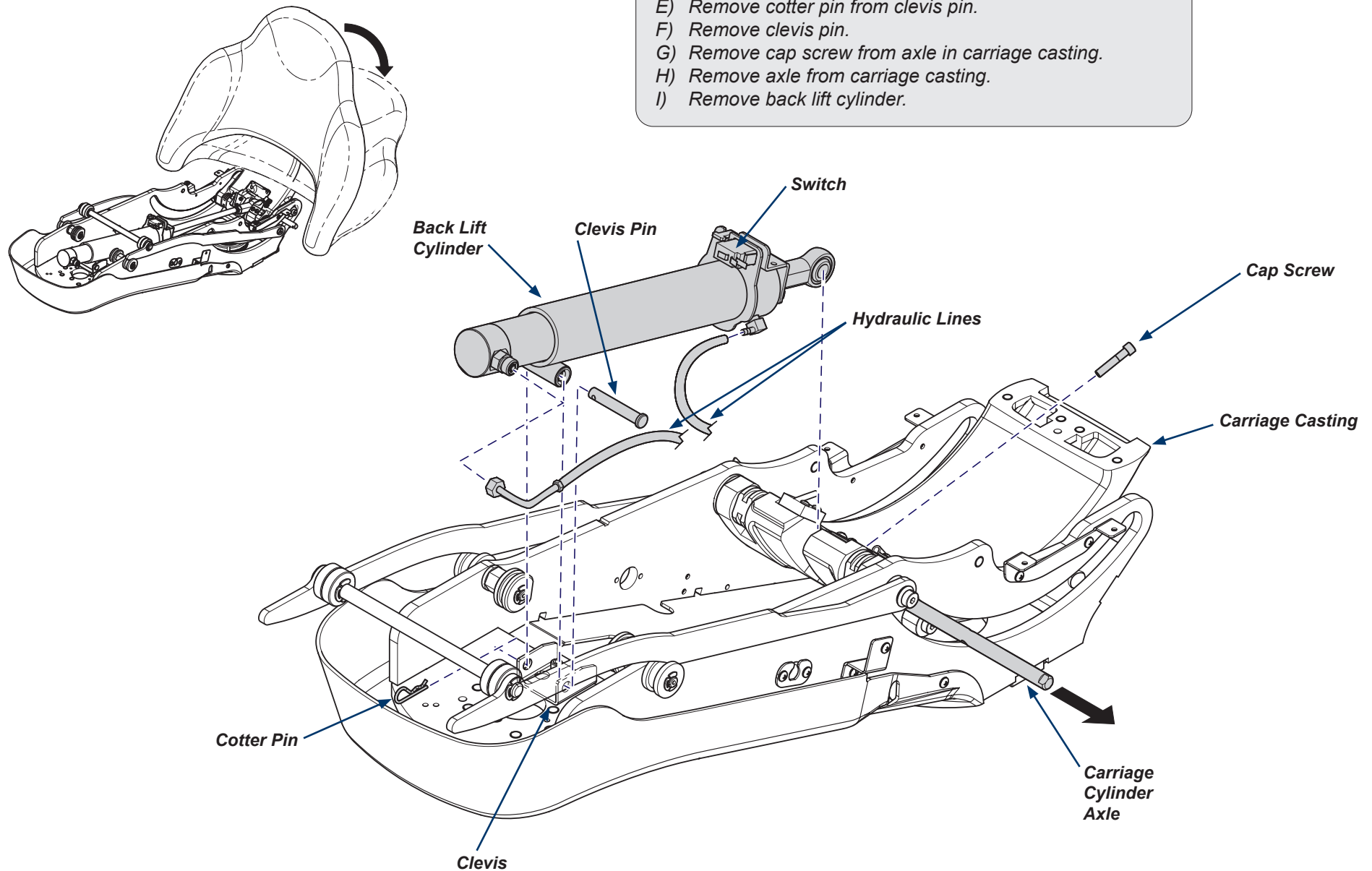


Step 8: Position chair.

- A) Connect chair to power source.
- B) Move chair back to FULL DOWN position.
- C) Disconnect power source.

Step 9: Remove back lift cylinder

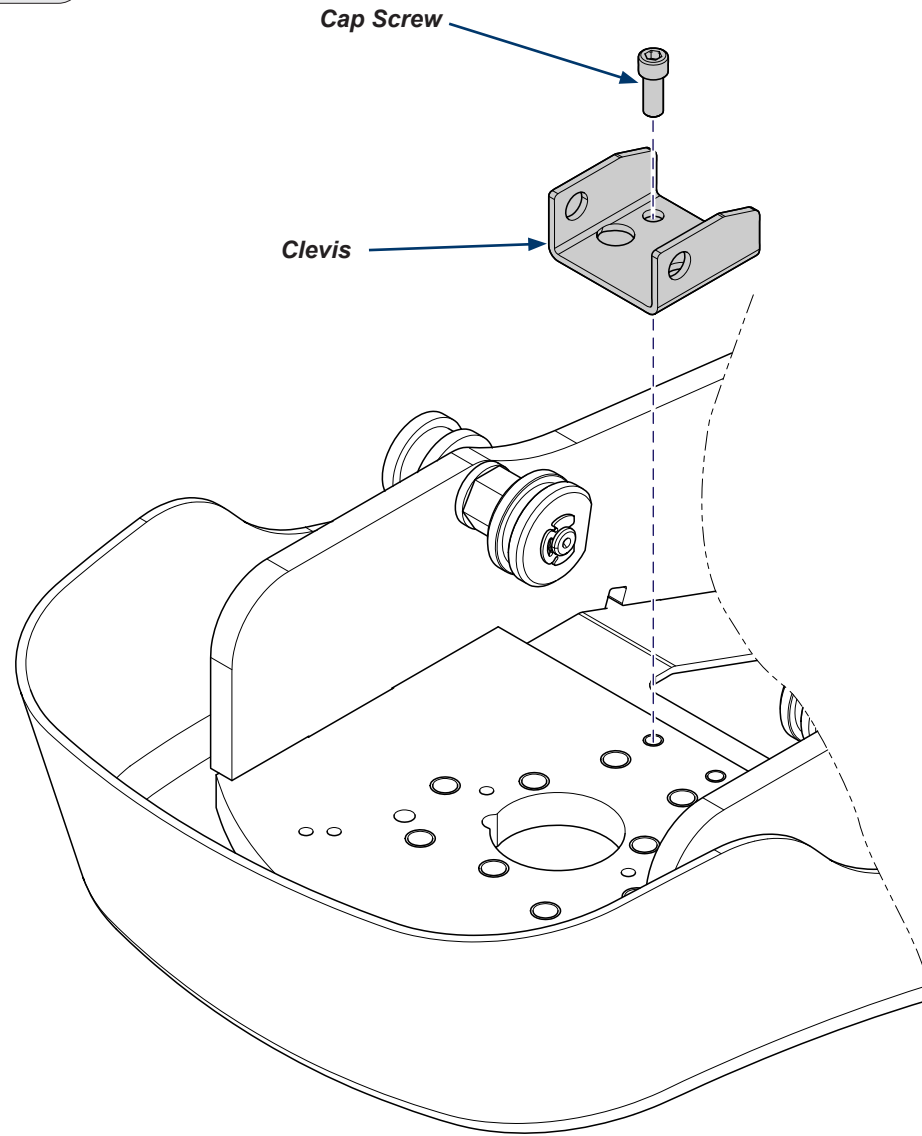
- A) Remove any cable ties from the cylinder (note locations).
- B) Disconnect switch wires from terminals.
- C) Ensure power is removed from hydraulic functions.
- D) Disconnect hydraulic lines from cylinder then install plugs to prevent fluid leaking.
- E) Remove cotter pin from clevis pin.
- F) Remove clevis pin.
- G) Remove cap screw from axle in carriage casting.
- H) Remove axle from carriage casting.
- I) Remove back lift cylinder.



Step 10: Install clevis.

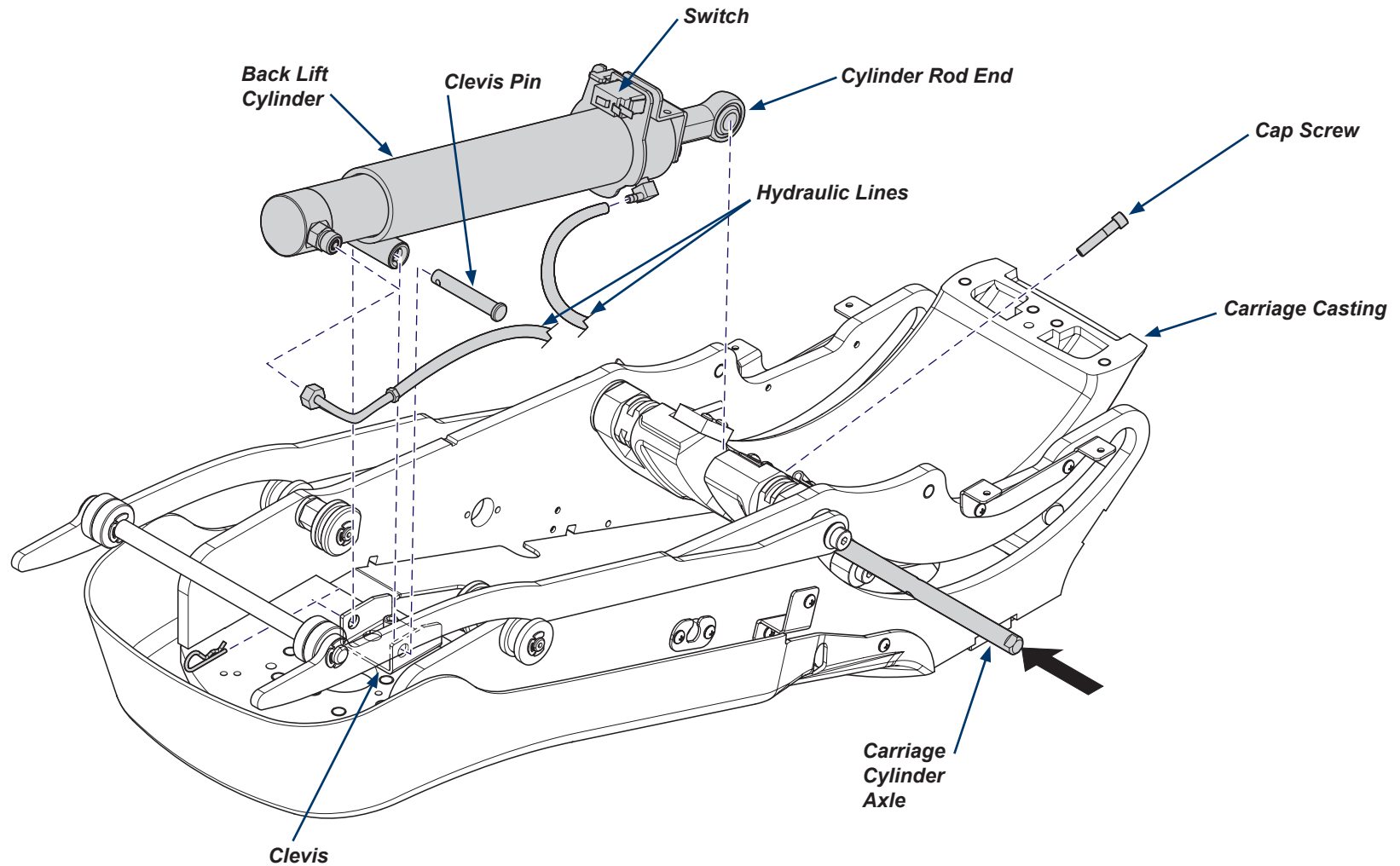
A) Remove two screws from clevis then remove clevis.

B) Install new clevis using two new cap screws as shown.



Step 11: Instal new back lift cylinder

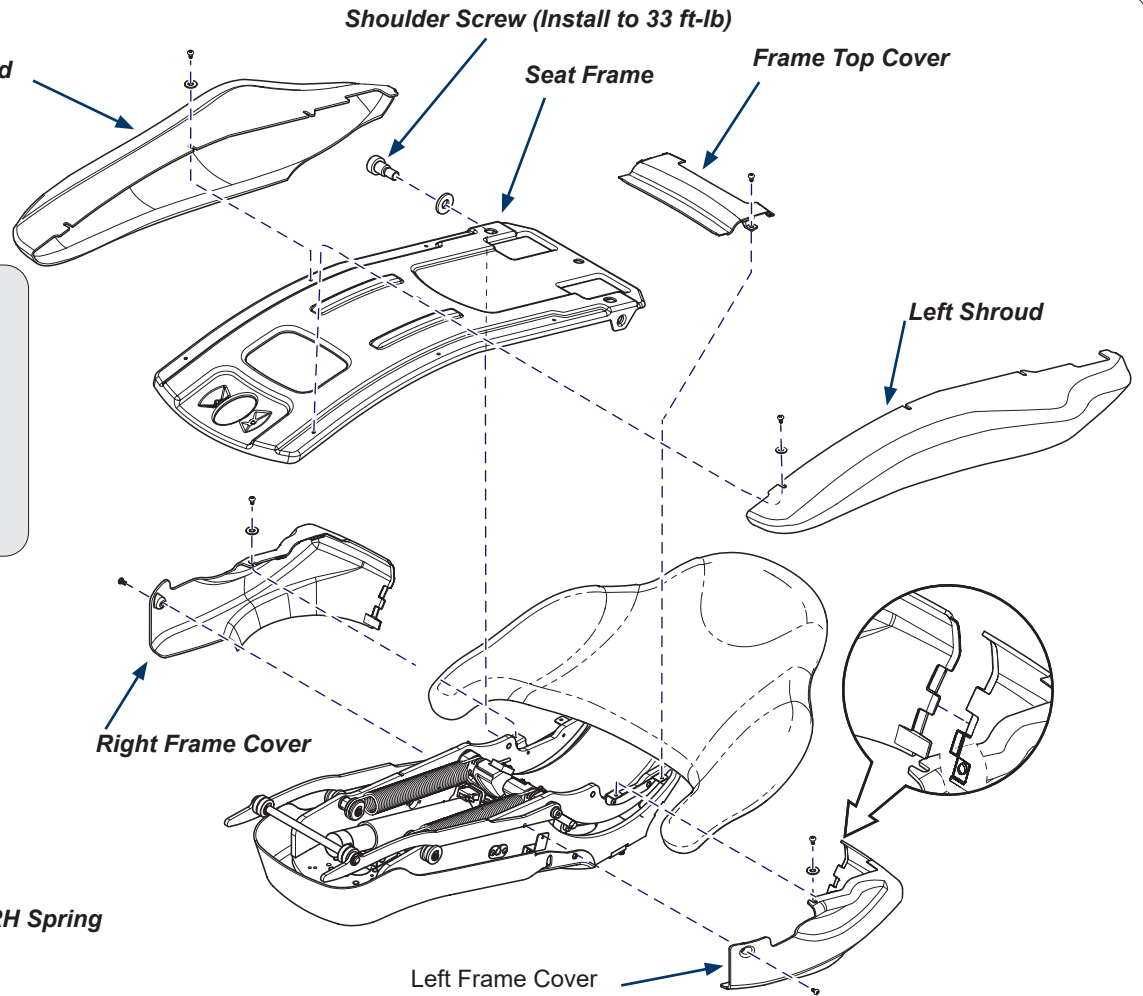
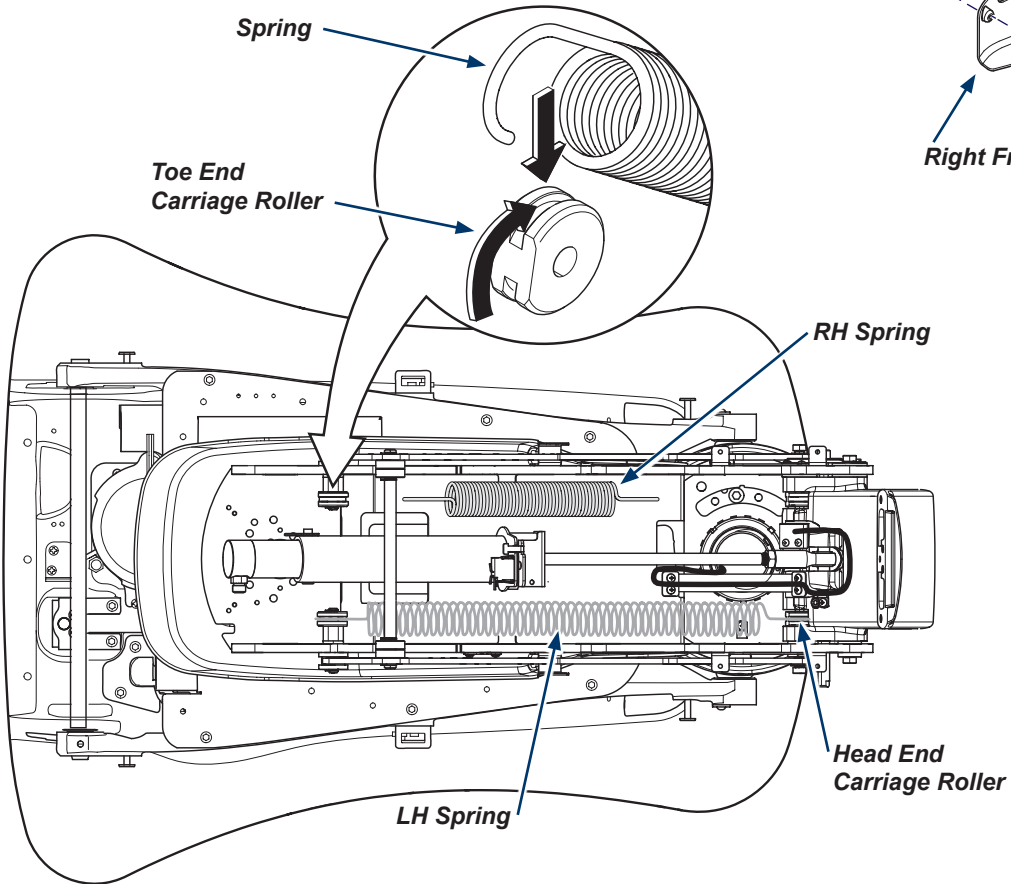
- A) Place new back lift cylinder into the chair weldment.
- B) Install new clevis pin thru clevis and back lift cylinder, secure with cotter pin.
- C) Install carriage cylinder axle into carriage casting while positioning cylinder rod end so axle will go through it.
- D) Install cap screw to secure axle in carriage casting.
- E) Install cable ties on the cylinder in previous locations.
- F) Connect hydraulic lines to cylinder as shown.
- G) Connect switch wires to terminals.



Step 12: Install retraction springs.

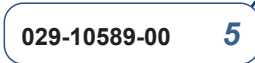
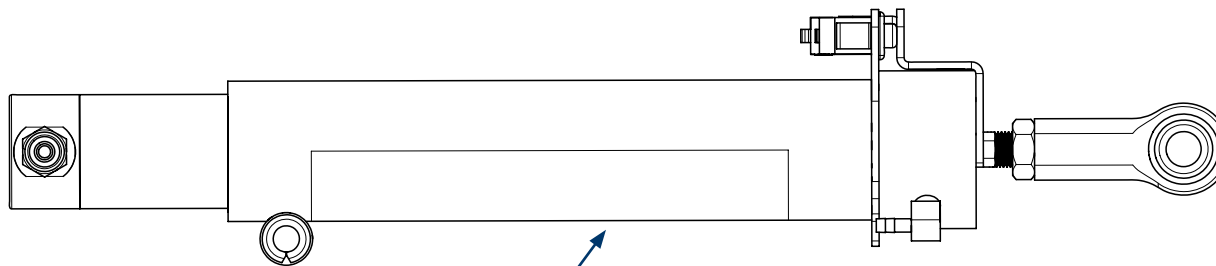
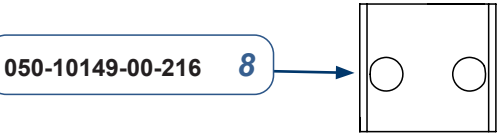
- A) Rotate head end Carriage Roller so flat is facing head end. Flex Retraction Spring and hook to head end Carriage Roller.
- B) Rotate toe end Carriage Roller so flat is facing toe end. Stretch and flex Retraction Spring and hook to toe end Carriage Roller.
- C) Repeat Steps A & B to install other Retraction Spring.

Note: Shoulder Screws need torqued down 33 ft-lb when reinstalling seat frame.



Step 13: Install covers, shrouds, frame and Test.

- A) Install Seat Frame (two shoulder bolts).
- B) Install Frame Top Cover (two screws).
- C) Install Left and Right Frame Covers (two screws each).
- D) Install Left and Right Seat Shrouds (three screws each).
- E) Connect chair to power source.
- F) Ensure power is restored for hydraulic functions.
- G) Verify operation.



002-10475-00 Back Lift Cylinder Replacement Kit
(includes items 1 through 9)
002-10474-00 Carriage Roller Replacement Kit
(includes items 1 through 4)

Item	Description	Qty.
1	Shoulder Screw (2 1/2")	2
2	Roller (3/8" wide)	2
3	Shoulder Screw (1 1/4")	2
4	Roller (11/16" wide)	2
5	Back Lift Cylinder	1
6	Cotter Pin	1
7	Clevis Pin	1
8	Clevis	1
9	Cap Screw	2