

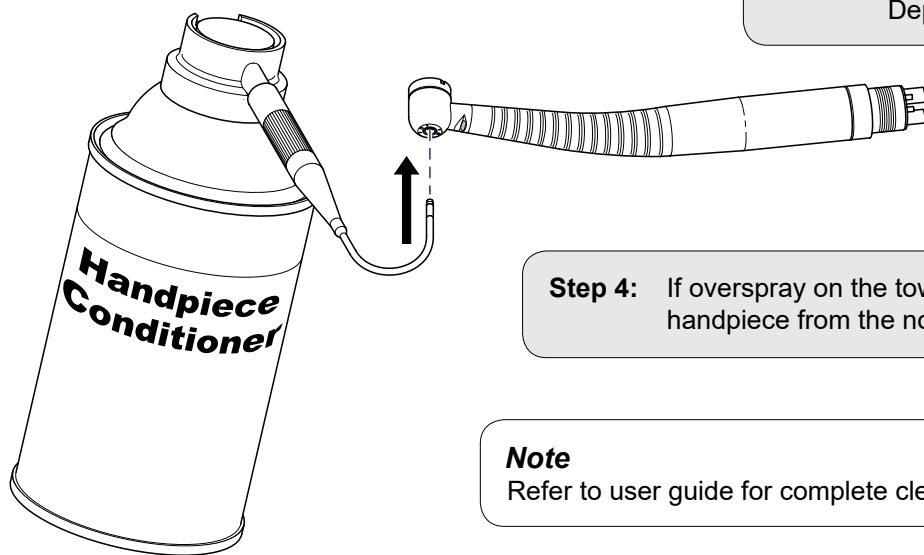
Note

This tool is used in a portion of the maintenance process for appropriate handpieces. For complete maintenance procedures, refer to the user guide. For best results, clean and lubricate push button and chuck during each complete handpiece cleaning. Complete handpiece cleaning is recommended after each patient to mitigate cross contamination between patients. This procedure may also be performed between handpiece cleanings if the handpiece appears to be under performing.

Step 1: Screw nozzle onto spout of handpiece conditioner can using knurled base. Orient the curved tip of the nozzle above the can spout.

Step 2: Remove bur or test pin from handpiece chuck and Insert the nozzle tip into spindle bore completely until it stops.

Step 3: Hold very slight pressure on handpiece towards nozzle tip to keep it seated in position. Direct handpiece and nozzle away from your body and towards an absorbent towel. Depress handpiece conditioner can top to spray for a minimum of two full seconds.



Step 4: If overspray on the towel appears discolored repeat spray for an additional two seconds. Remove the handpiece from the nozzle tip and wipe excess conditioner from handpiece with clean dry towel.

Note

Refer to user guide for complete cleaning procedures.

ArtHalf