

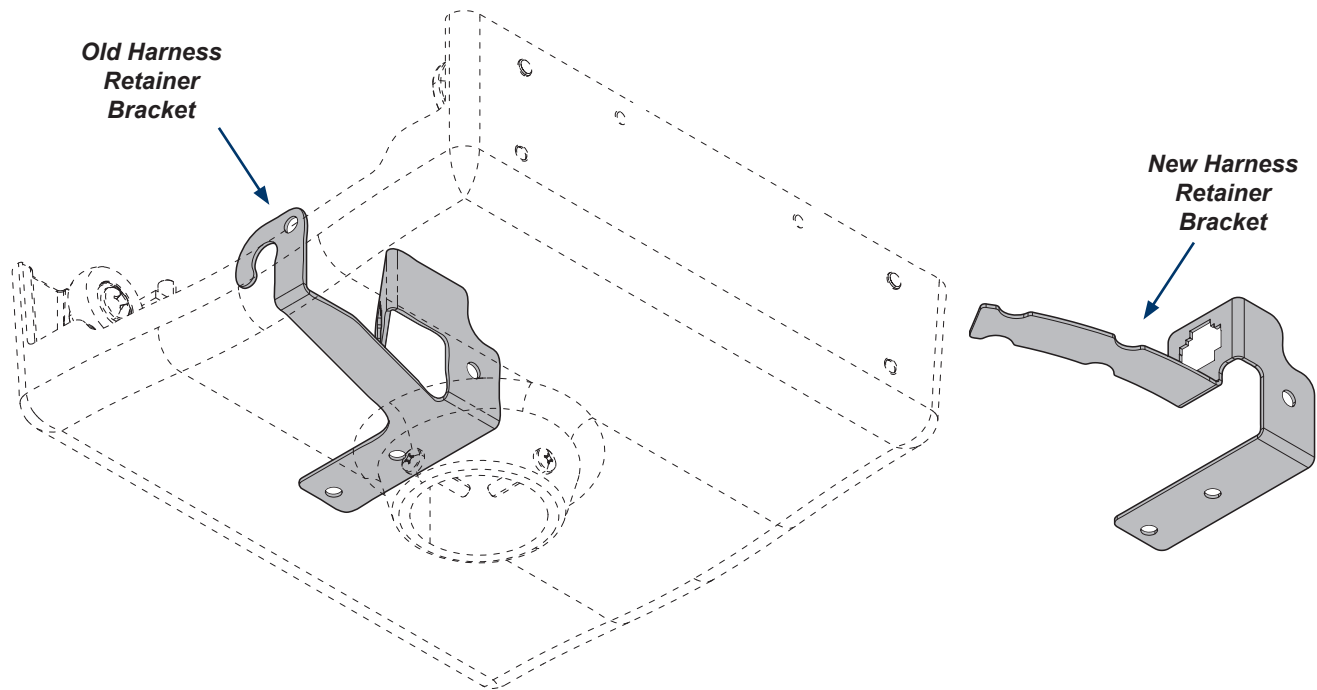
Harness Retainer Bracket Installation Kit [002-10598-00]

Applies to Models:
All

Special Tools:
none

Note

Use this kit to upgrade an existing harness retainer bracket with a new design.



ArtFull

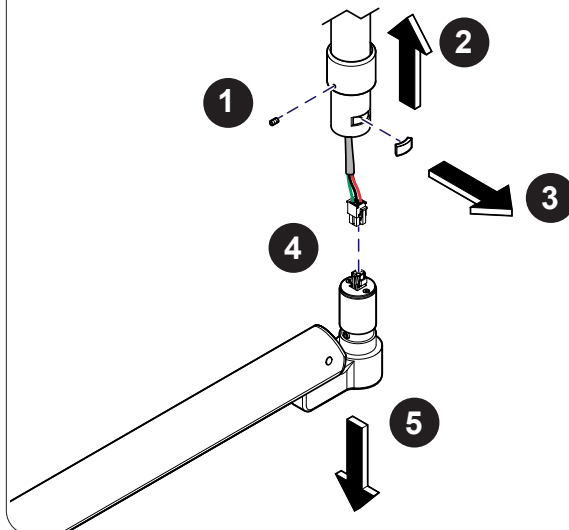


WARNING

Ensure that there is no power going to the unit. Failure to do so may result in serious personal injury.

Step 1:

Turn power off at fuse box.



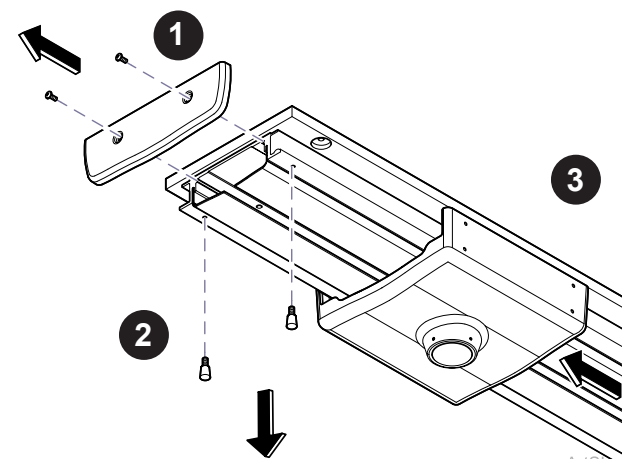
ArtSU3

Step 2:

Loosen set screw (1) and slide collar up suspension tube. Remove key from suspension tube. Disconnect trolley harness from light assembly harness and remove light assembly.

Note

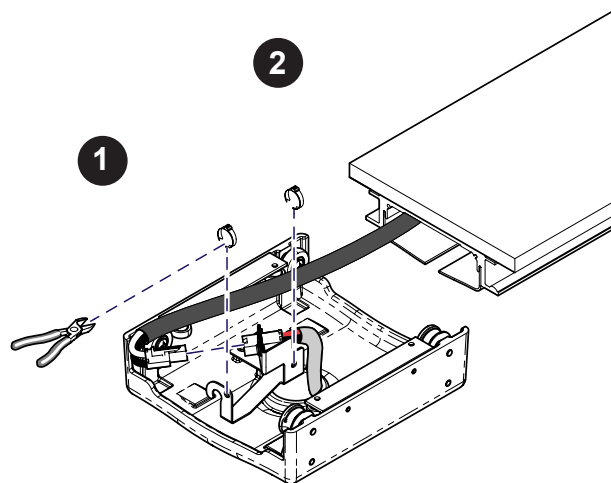
Track side covers and suspension tube not shown.



ArtSU3

Step 3:

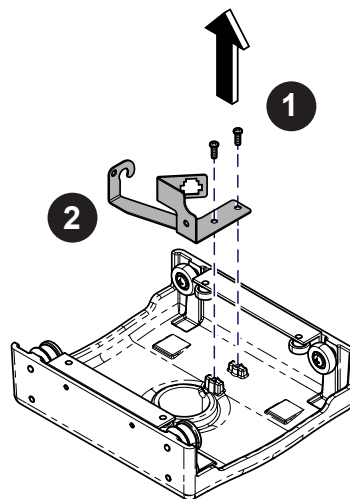
Remove screws (2) and endcap from track. Remove bumpers (2) from track and remove trolley from track.



ArtSU3

Step 4:

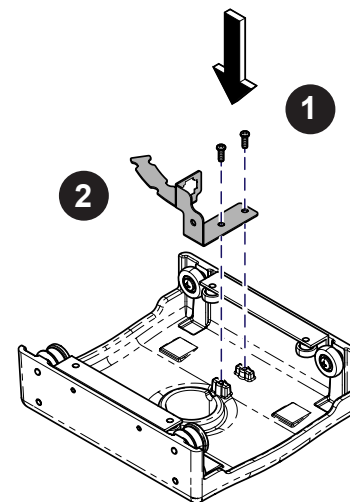
Cut zip tie (1) from track harness. Disconnect track harness from trolley receptacle. Cut zip tie (1) from trolley harness.



ArtSU3

Step 5:

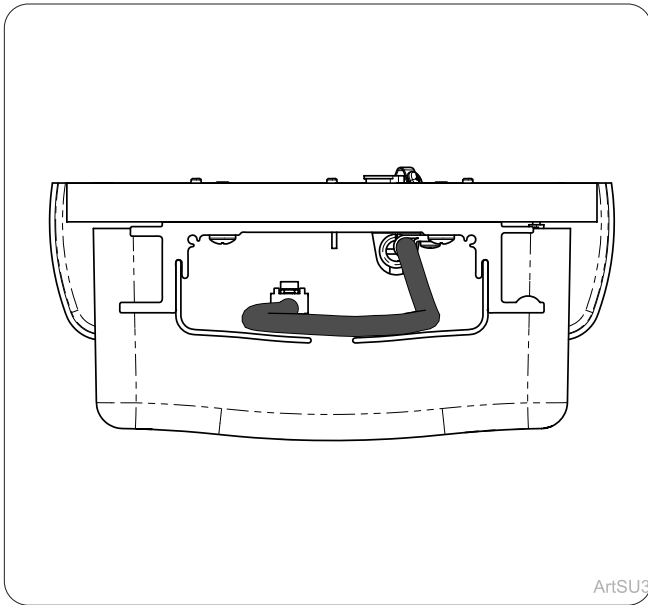
Remove screws (2) from harness bracket. Remove harness bracket from trolley.



ArtSU3

Step 6:

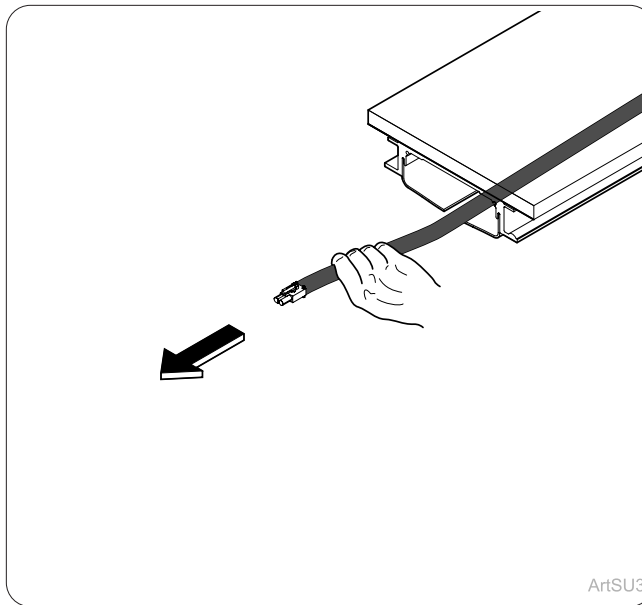
Position new harness retainer bracket onto trolley and secure with screws (2).



ArtSU3

Step 7a:

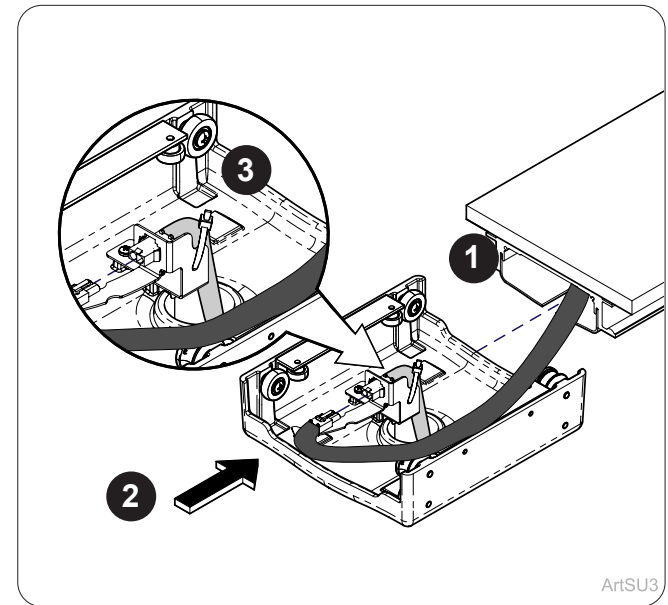
Ensure that the track harness is not twisted or looping down the track. Harness should appear as shown. If the track harness needs straightened, refer to step 7b.



ArtSU3

Step 7b:

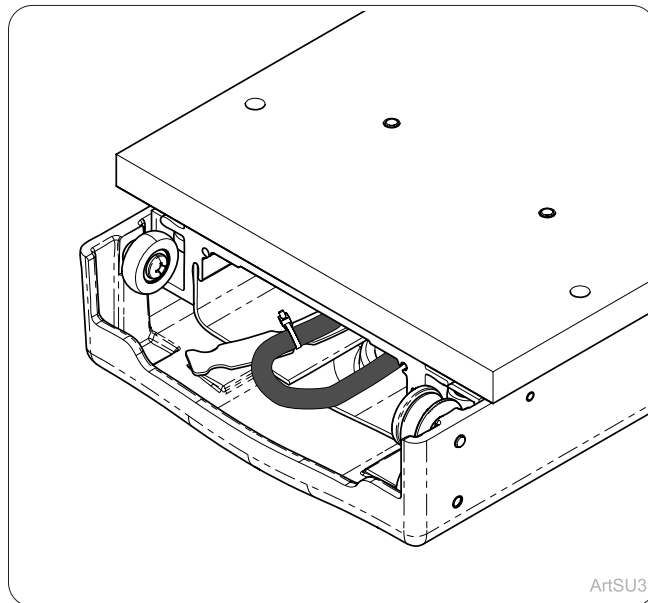
Untwist and straighten track harness.



ArtSU3

Step 8:

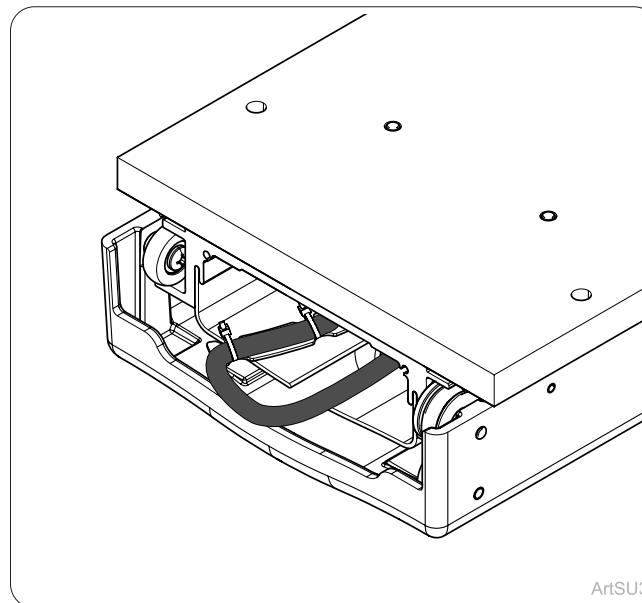
Slide trolley partially onto track and reconnect track harness to trolley receptacle. Install zip tie (1) to trolley harness.



ArtSU3

Step 9:

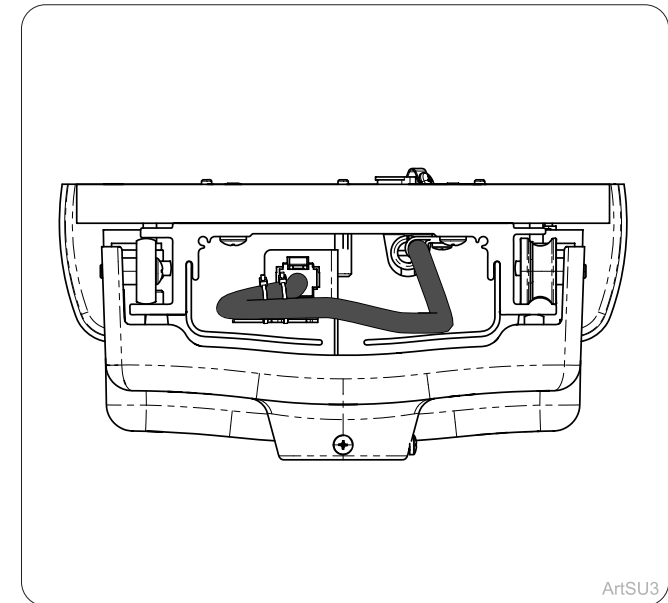
Secure track harness to harness retainer bracket using zip tie (1).



ArtSU3

Step 10:

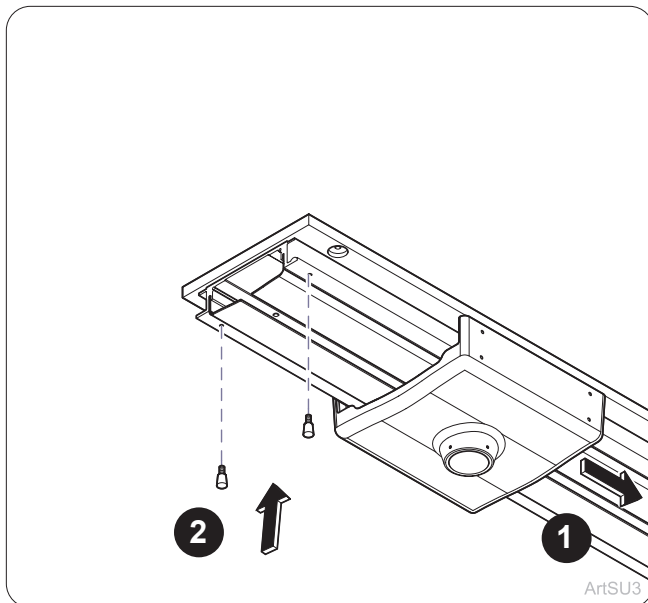
Slide trolley slightly further onto track and install zip tie (1).



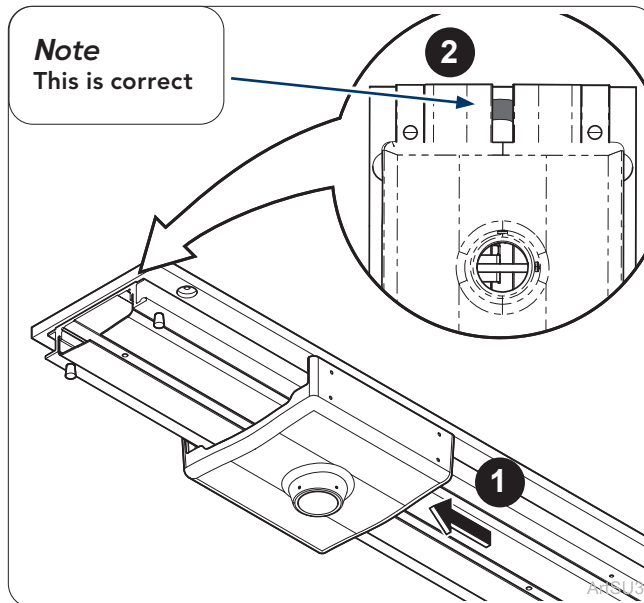
ArtSU3

Step 11:

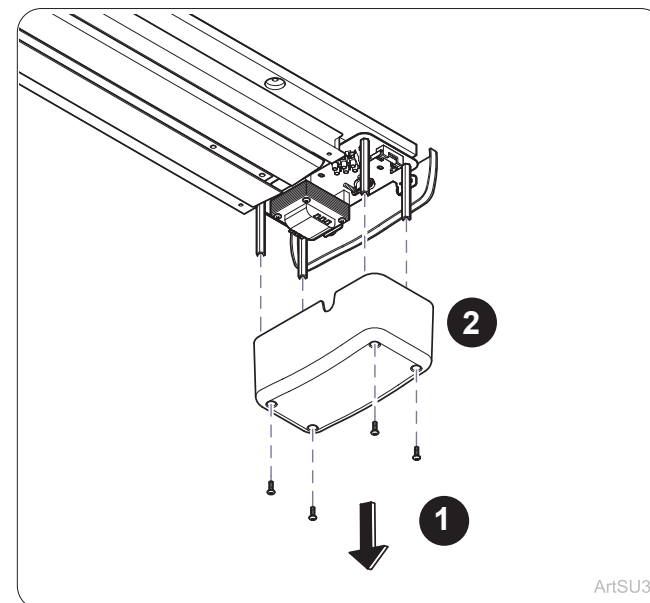
Ensure that the track harness is not twisted or looping down the track. Harness should appear as shown.



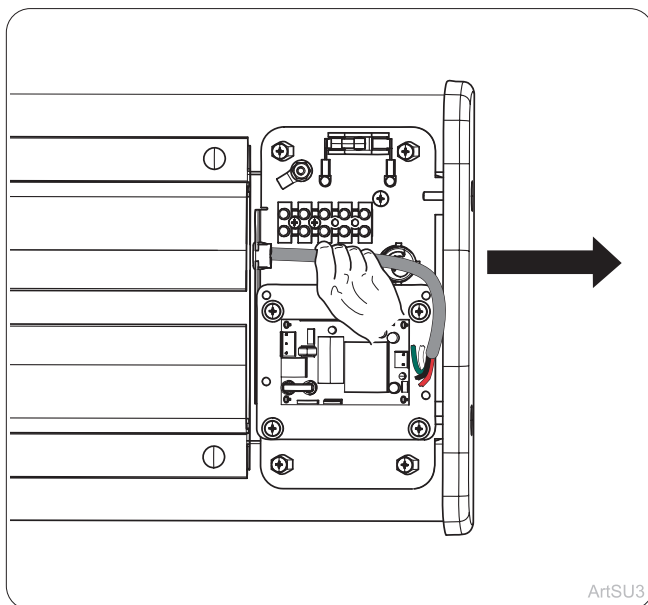
Step 12:
Slide trolley past bumper holes and install bumpers (2).



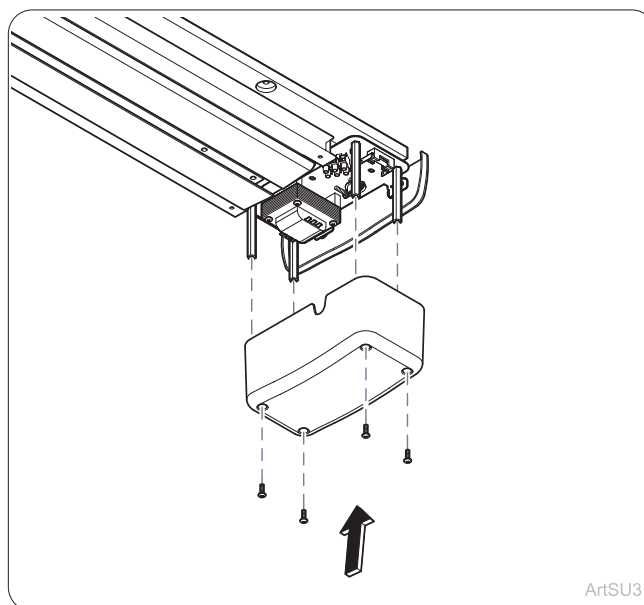
Step 13a:
Slide trolley to end of track and ensure that the track harness is 1/4" to 1/2" from the end of the track. If the track harness needs adjusted, refer to steps 13b through 13d.



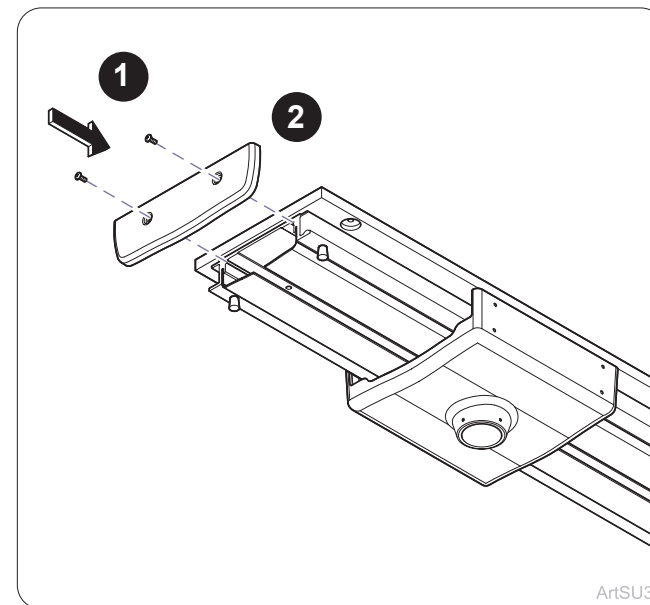
Step 13b:
Remove screws (4) and remove transformer cover from track.



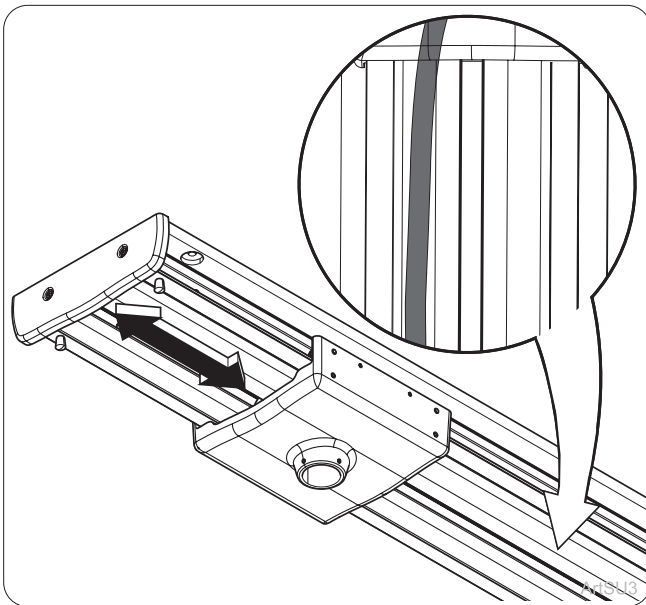
Step 13c:
Pull on track harness cable until track harness is no longer extending out the end of the track. Repeat steps 13a and 13c until harness is 1/4" to 1/2" from the end of the track.



Step 13d:
Position transformer cover onto track and secure with screws (4).

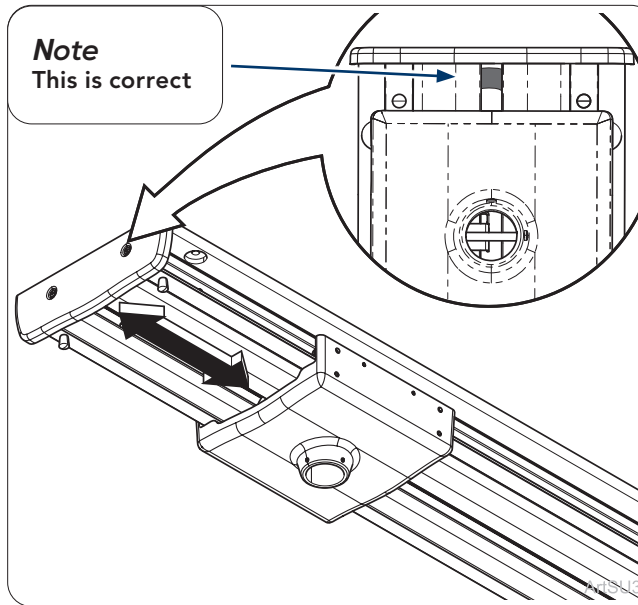


Step 14:
Position endcap onto track and secure with screws (2).



Step 15:

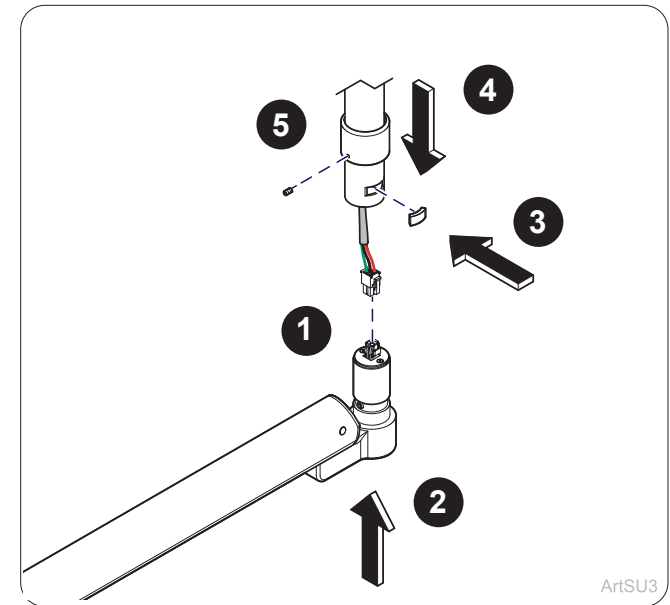
Cycle trolley back and forth and ensure that the track harness does not cross over the center slot. Harness should be positioned as shown. Refer to step 7b for adjustment.



Note
This is correct

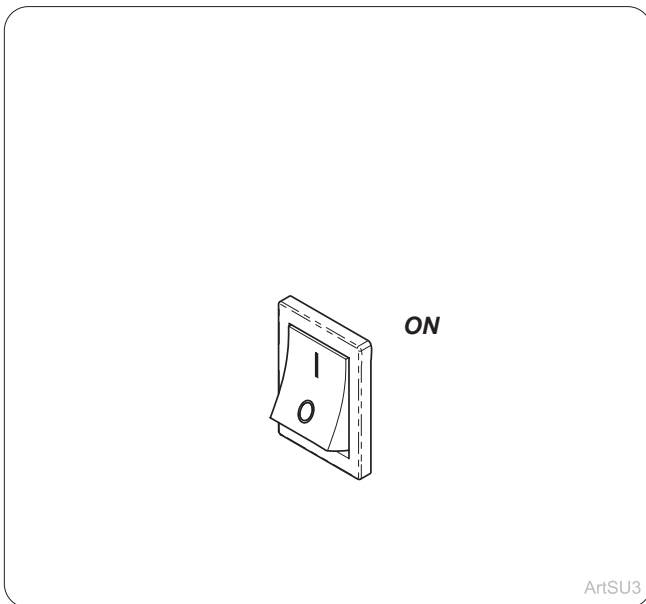
Step 16:

Cycle trolley back and forth and ensure that the track harness does not make contact with the end cap. If harness contacts end cap, refer to steps 13b through 13d.



Step 17:

Connect trolley harness to light assembly harness and insert light assembly into suspension tube. Insert key into suspension tube. Slide collar over key and tighten set screw.



Step 18:

Turn power on at fuse box.