

Step 1: Remove cover, belt, motor pulley.

- Disconnect power at on/off switch and main power supply box.
- Remove front cover. Turn bottom fasteners 1/4 turn counter clockwise and pull bottom of cover away from base. Lift cover straight up to free plastic cones from holes in side panels.
- Slightly rotate tension arm up toward the motor pulley and remove belt.
- Unscrew mounting bolts from hub and insert them into threaded removal holes on hub.
- Alternately tighten bolts to separate pulley from hub, remove both pieces from motor shaft.



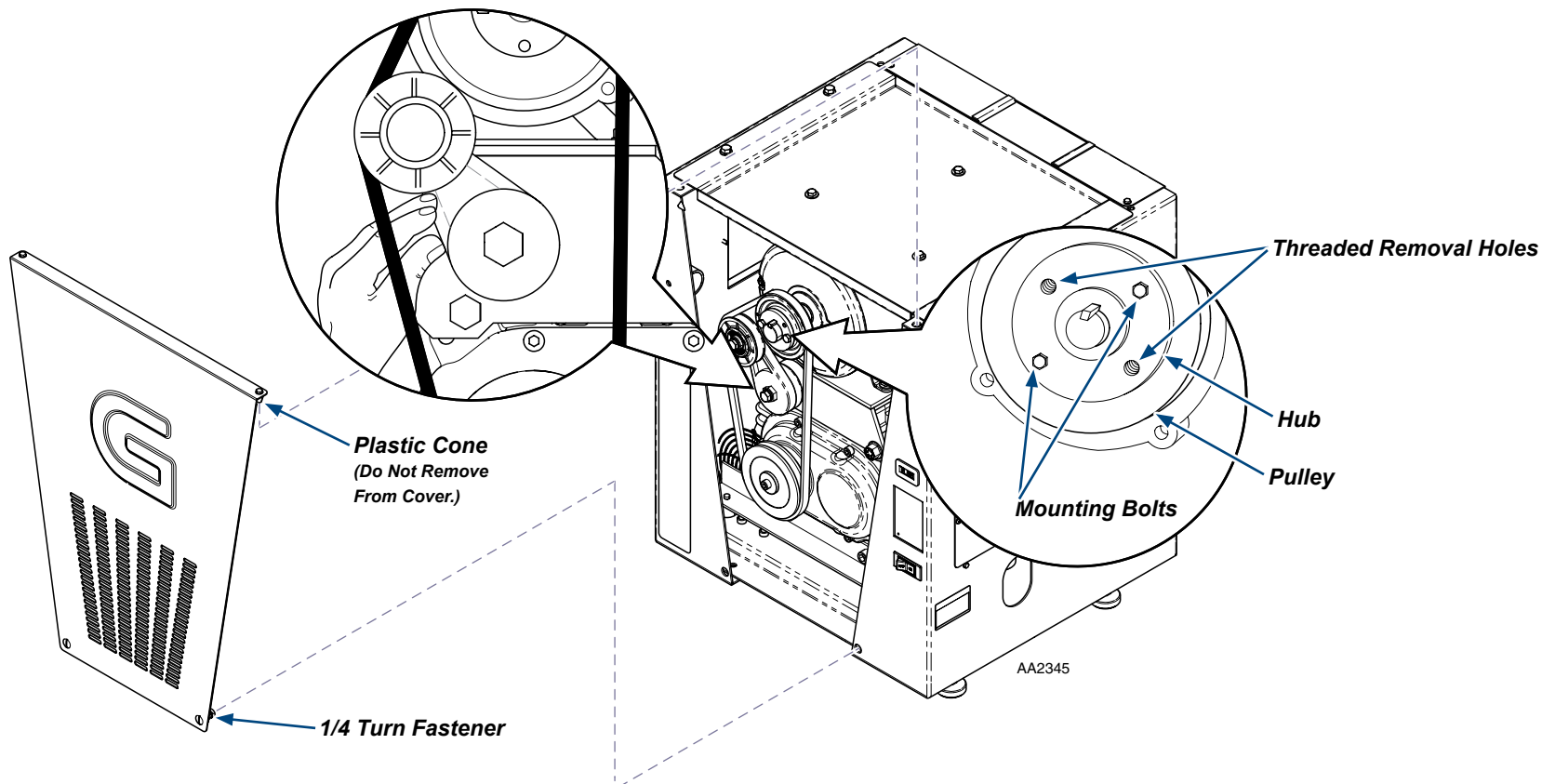
WARNING

To prevent risk of shock always disconnect power before removing covers or performing any service procedure.



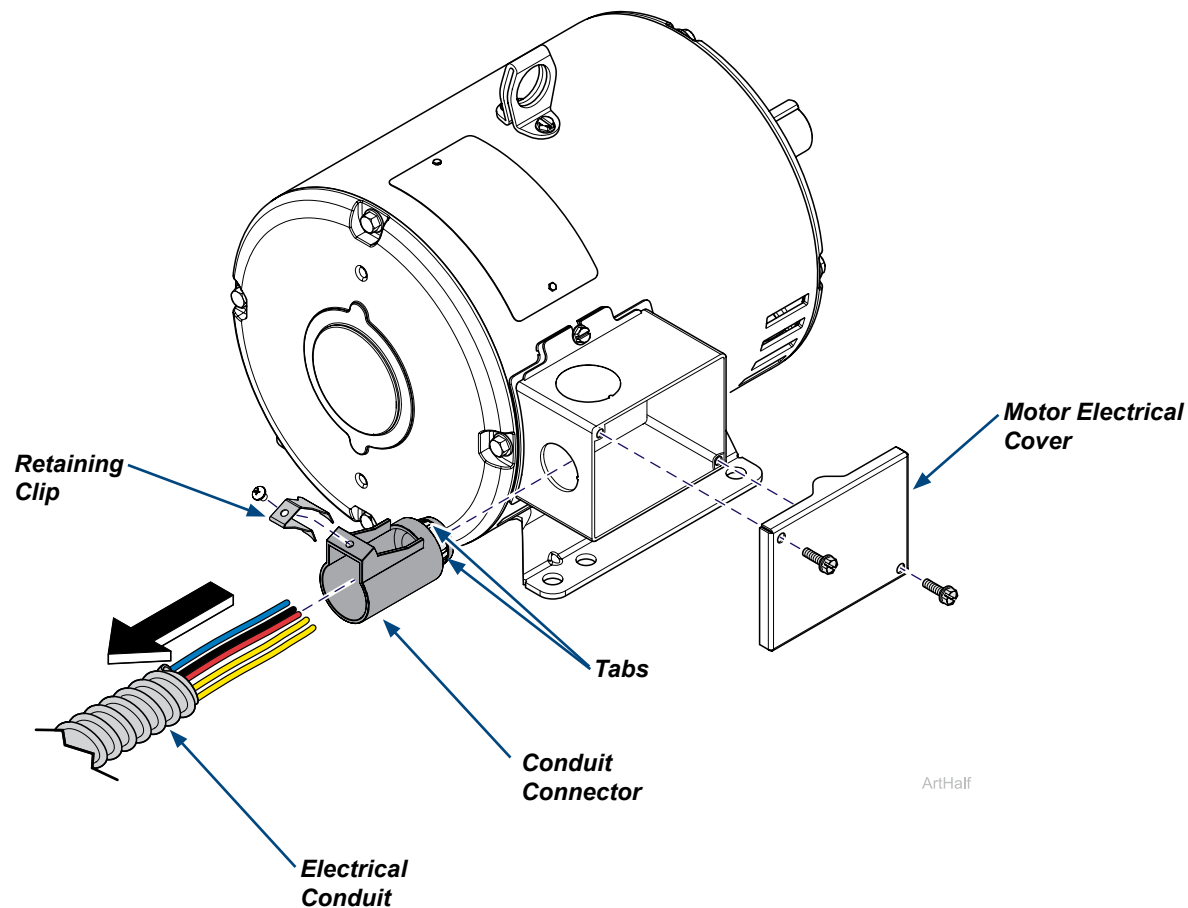
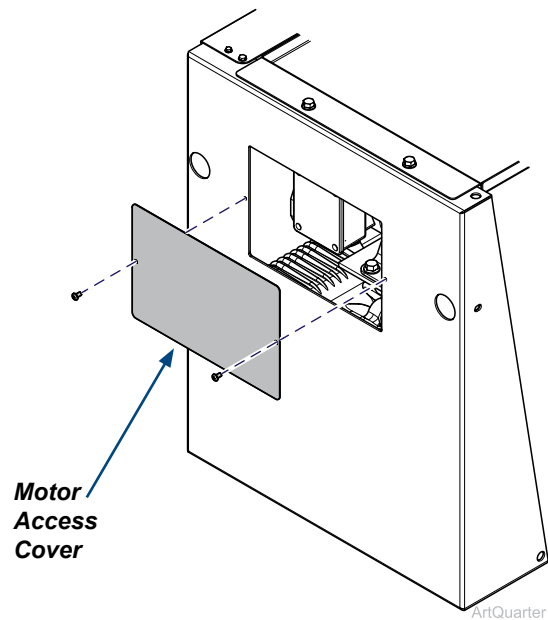
WARNING

Equipment is not suitable for use in the presence of a flammable anesthetic mixture.



Step 2: Remove motor harness from motor and connector from conduit.

- A) Remove two bolts securing left side motor access cover and remove cover.
- B) Remove two bolts securing motor electrical cover and remove cover. Disconnect electrical connections.
- C) Remove conduit connector from electrical box by pushing in on tabs and pulling connector out.
- D) Loosen screw holding retaining clip on conduit connector and pull electrical conduit free from connector.



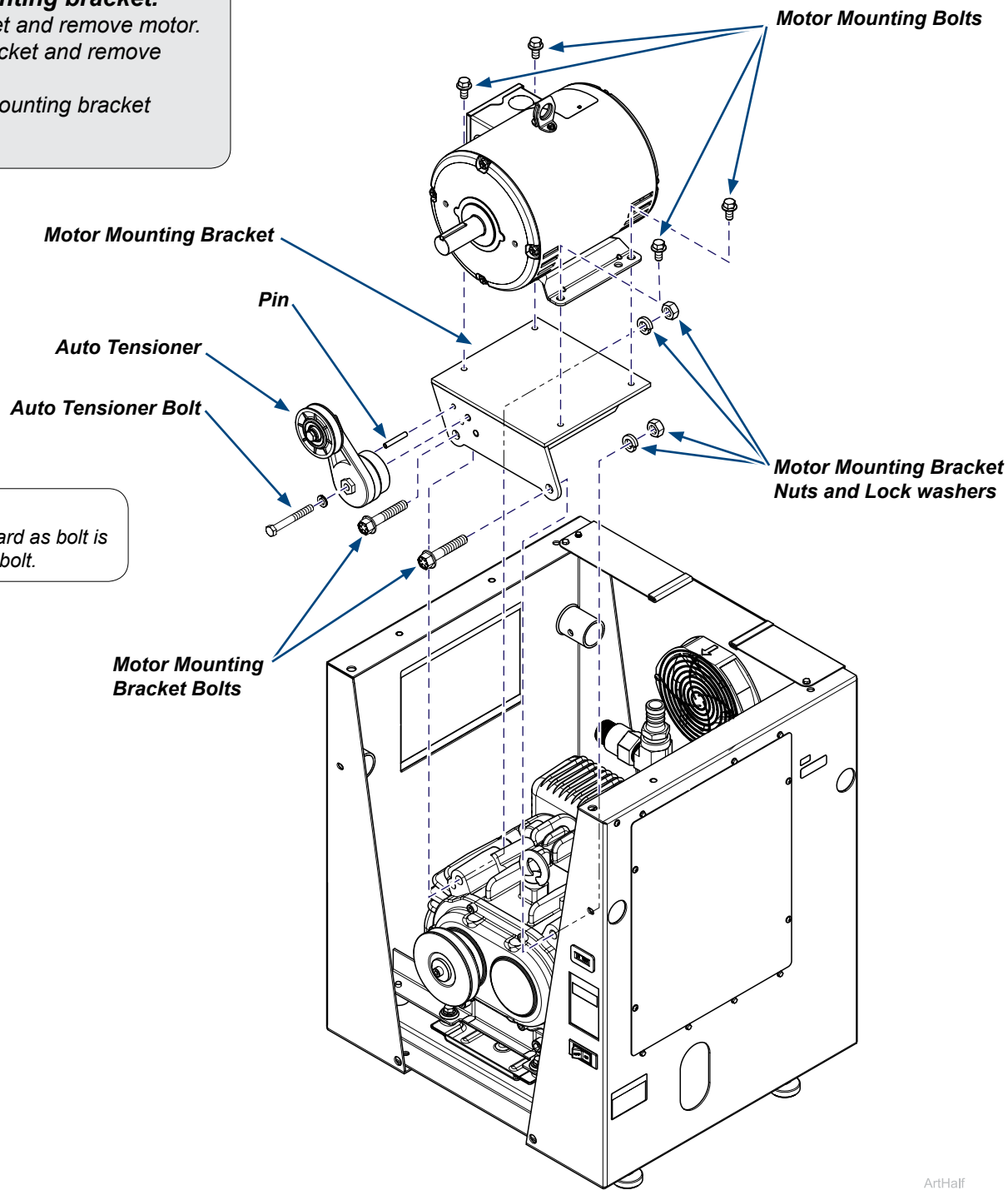
Step 3: Remove motor, auto tensioner and motor mounting bracket.

- A) Remove four bolts securing motor to motor mounting bracket and remove motor.
- B) Remove bolt securing auto tensioner to motor mounting bracket and remove auto tensioner and pin.
- C) Remove two bolts, nuts and lock washers securing motor mounting bracket to pump housing and remove mounting bracket.



Caution

Tension arm is spring loaded and could move downward as bolt is removed. Keep hands clear of tension arm mounting bolt.



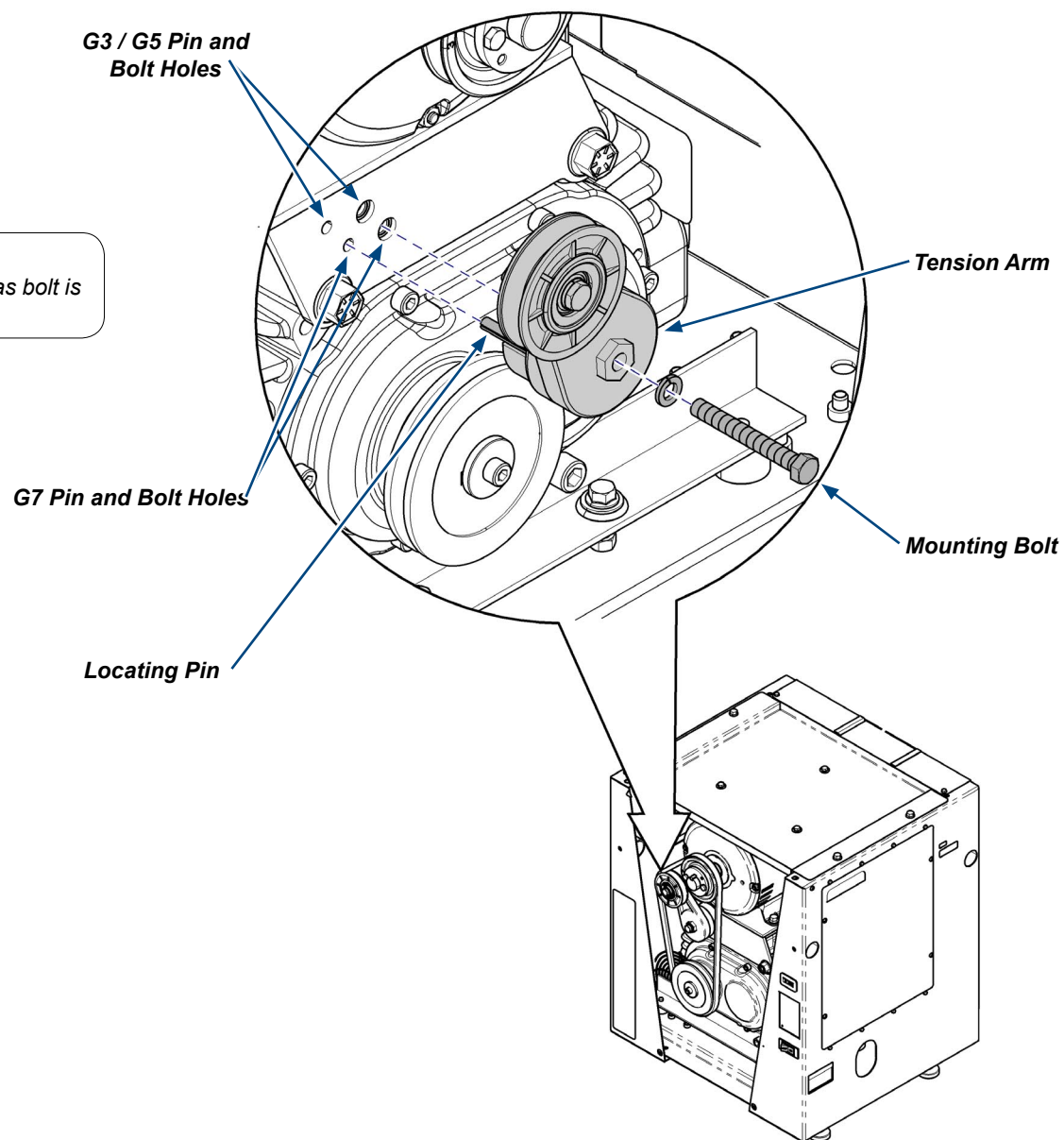
Step 4: Install auto tensioner onto new motor bracket.

- A) Locate correct locations for tensioner locating pin and tensioner mounting bolt on new motor mounting bracket.
- B) Install auto tensioner on new motor mounting bracket in the correct location for your model.



Caution

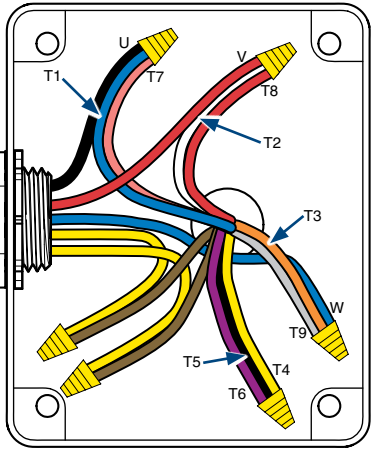
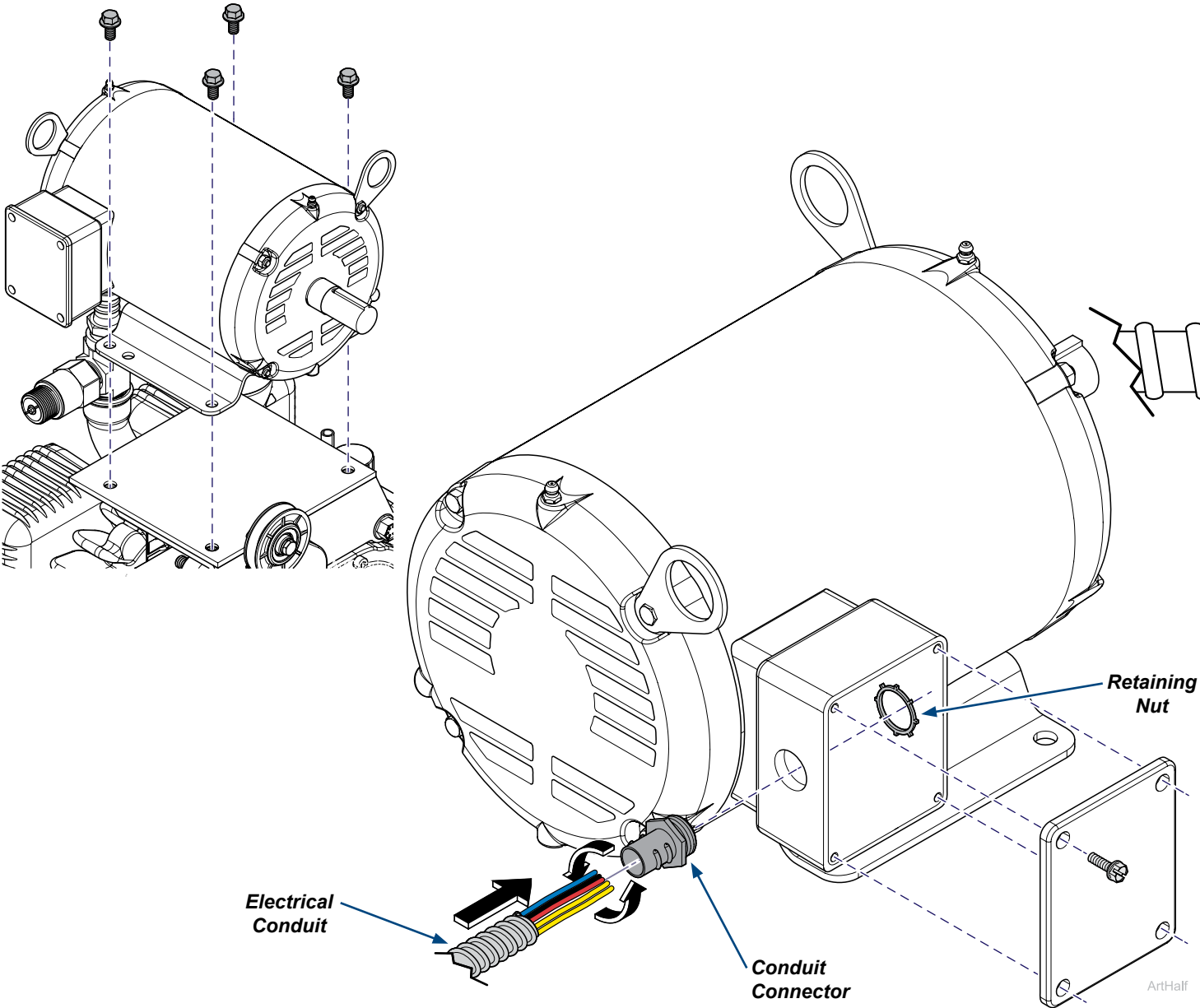
Tension arm is spring loaded and could move downward as bolt is removed. Keep hands clear of tension arm mounting bolt.



Step 5: Install motor

- A) Install new motor and secure with mounting bolts.
- B) Install new electrical conduit connector onto wire going to motor by routing wires through connector and threading connector onto the conduit.
- C) Remove motor electrical box cover and secure the electrical conduit connector to motor with the retaining nut.
- D) Connect motor wires as shown and reinstall motor electrical box cover.

Motor Harness To Controller	Motor Wires
U (Black)	T1 / T7 (Blue/Pink)
V (Red)	T2 / T8 (White/Red)
W (Blue)	T3 / T9 (Orange/Grey)
---	T4 / T5 / T6 (Yellow/Black/Purple)
1 Yellow	1 Brown
1 Yellow	1 Brown



Step 6: Install hub and pulley on new motor.

- A) Position hub and pulley on to new motor shaft.
- B) Insert mounting bolts through unthreaded holes of hub and into threaded holes of pulley.
- C) Position hub and pulley at a depth that will align the motor pulley with the pump pulley.
- D) Verify pump and motor pulley are aligned with a straight edge on both sides and tighten mounting bolts.
- E) Install belt, Replace front cover. Connect power. Test vacuum.

