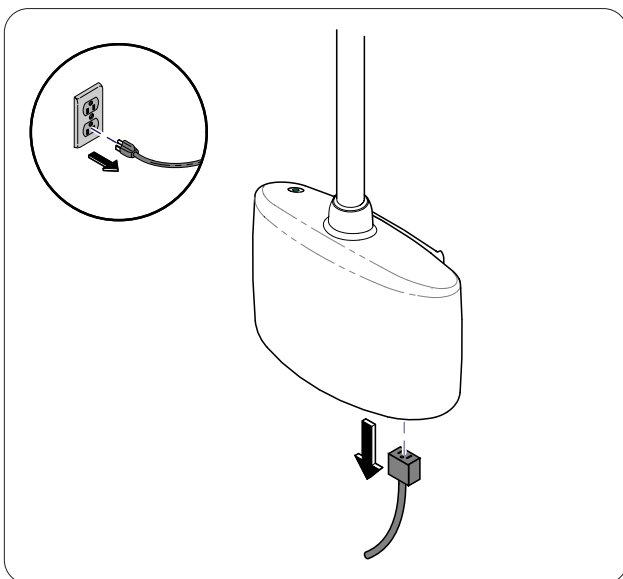




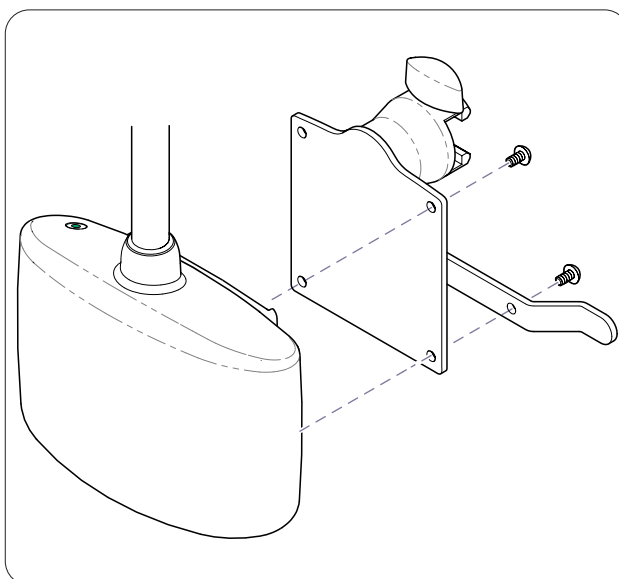
WARNING

To prevent risk of shock always disconnect power before removing covers or performing any service procedure.



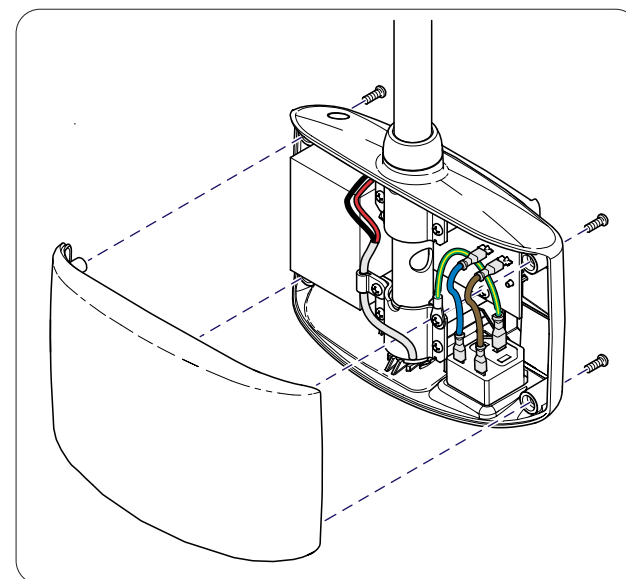
Step 1: Disconnect power...

- A) Disconnect power to light.
- B) Unplug power cord from housing.



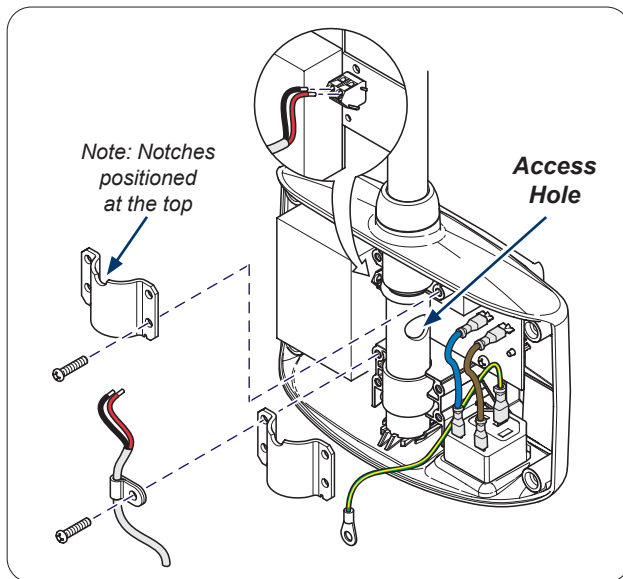
Step 2: Remove mounting bracket...

- A) Remove four screws and mounting bracket.
- Note: Mounting brackets may vary.
(caster base mount, side rail mount, spline mount, wall mount)



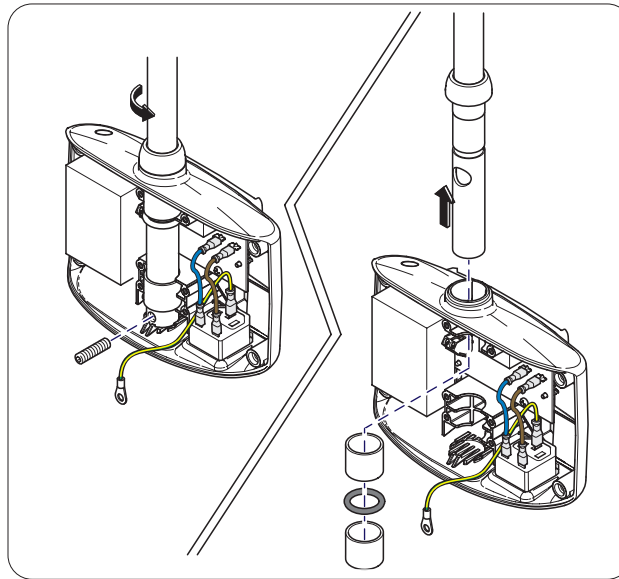
Step 3: Remove housing cover...

- A) Remove four screws and housing cover.



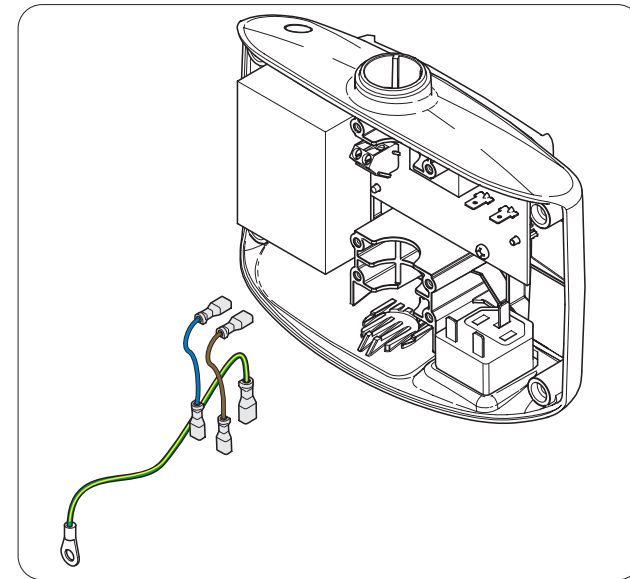
Step 4: Disconnect flex arm from housing...

- A) Disconnect flex arm wires from PC Board.
- B) Remove cable clamp from wire harness.
- C) Tuck wire harness into the access hole on the flex arm.
- D) Disconnect Ground wire and remove two clamps.



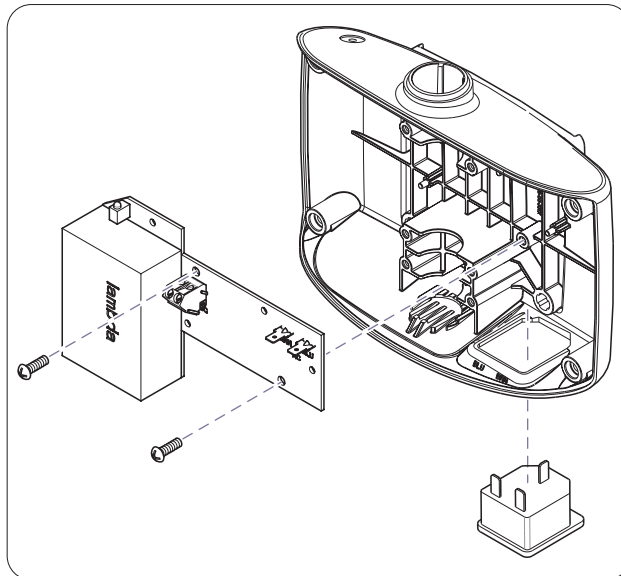
Step 5: Remove flex arm from housing...

- A) Remove set screw from flex arm using provided allen wrench.
 - B) Remove sleeves and o-ring then set aside.
 - C) Remove flex arm from housing.
- Note: Set screw, sleeves and o-ring are needed for re-assembly.



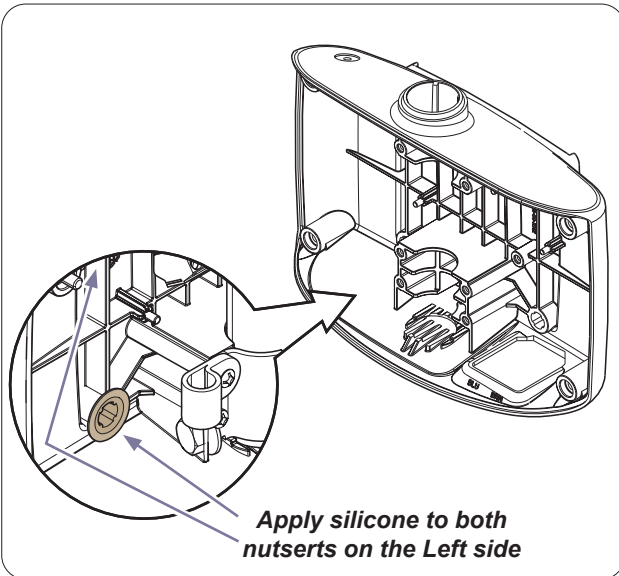
Step 6: Disconnect power inlet wiring...

- A) Disconnect wiring from power inlet.
- B) Disconnect wiring from PC Board.



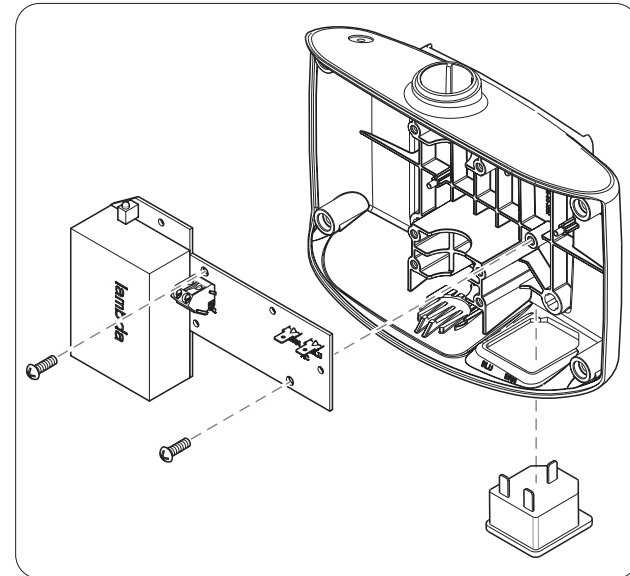
Step 7: Remove PCB and power inlet...

- A) Remove mounting screws and PC Board from housing.
 - B) Remove power inlet from housing.
- Note: PC Board is held in place with screws & silicone.
Pull / Pry PC Board to remove.



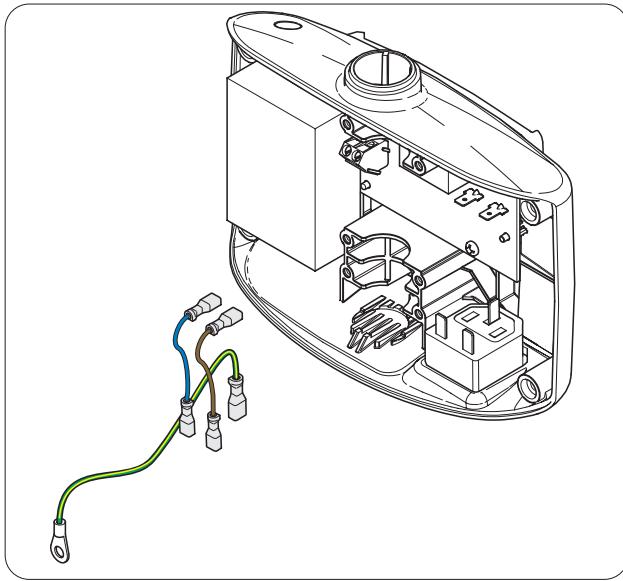
Step 8: Apply silicone...

- A) Apply silicone to the two Left nutserts.
- Note: Only apply silicone to the two nutserts that are shown.
Do not allow compound to harden before assembling PC Board.



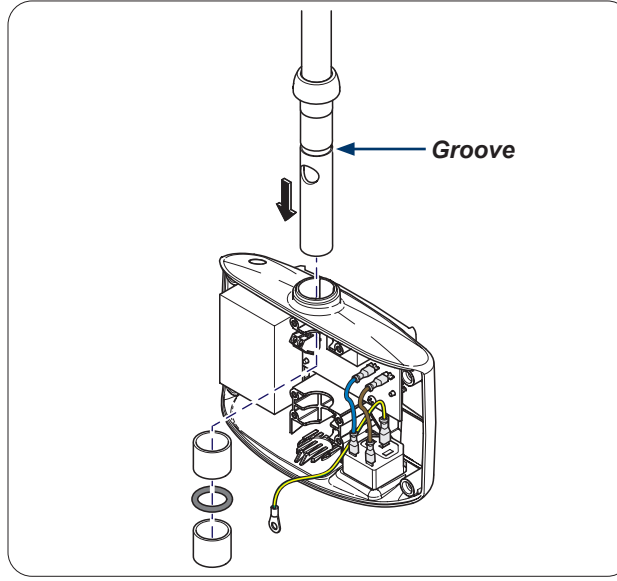
Step 9: Install PCB and power inlet...

- A) Position PC Board and secure with two screws.
- B) Re-install power inlet into new housing.



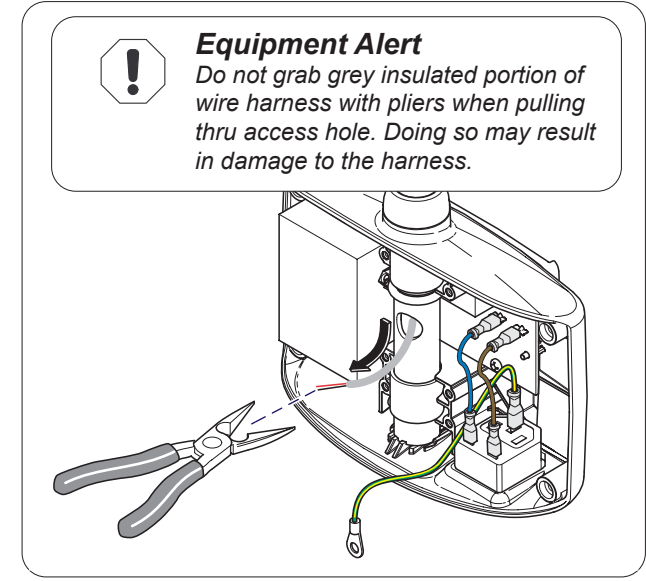
Step 10: Connect power inlet wiring...

- A) Connect wiring to power inlet.
- B) Connect wiring to PC Board.



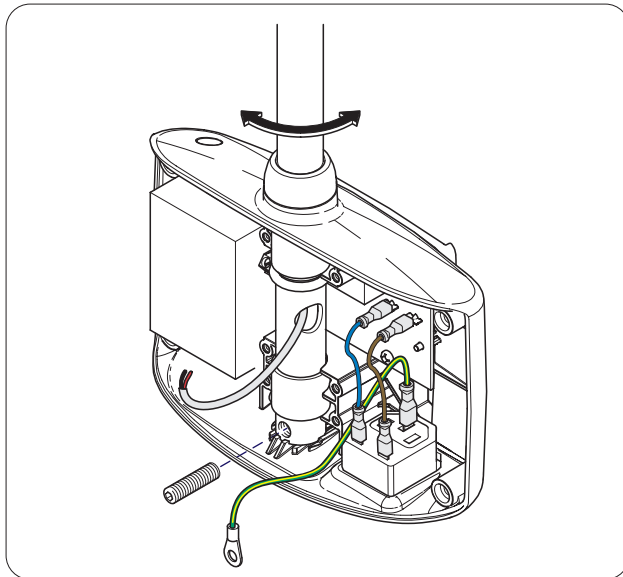
Step 11: Re-install flex arm...

- A) Slide flex arm into housing.
 - B) Install sleeves and o-ring as shown.
- Note: O-ring must be seated in groove.



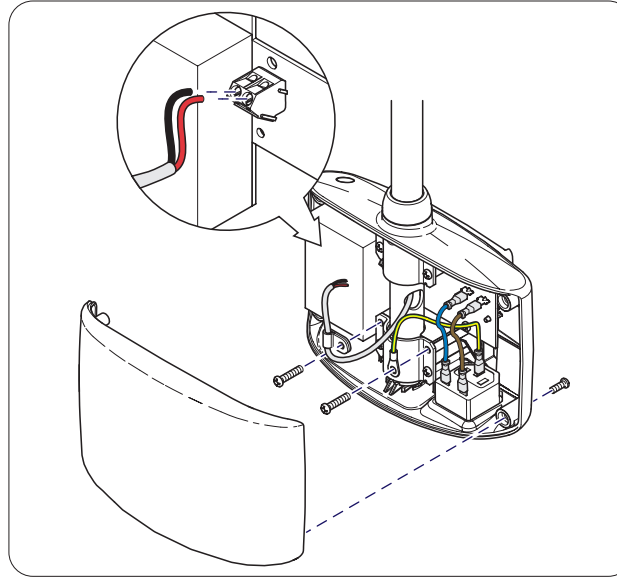
Step 12: Pull harness thru access hole...

- A) Using pliers, CAREFULLY grasp the red & black wires, then pull harness out thru access hole.
- Note: Pull enough wire thru to allow connection to PC Board.



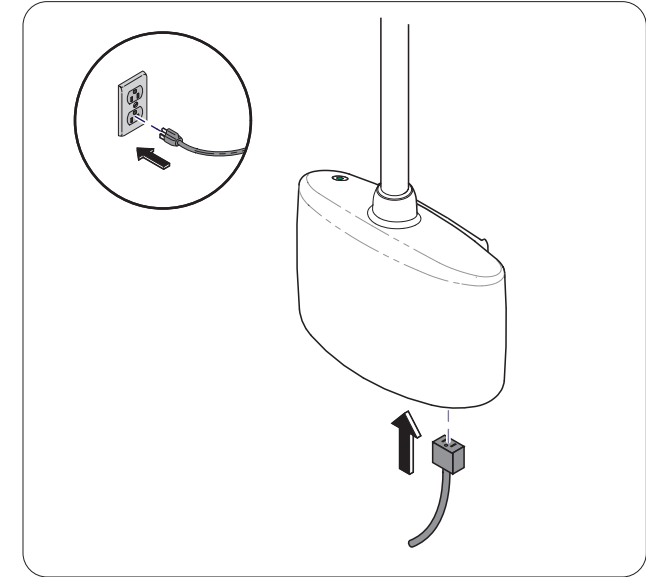
Step 13: Install set screw...

- A) Rotate flex arm as necessary.
- B) Install set screw.



Step 14: Complete installation...

- A) Rotate flex arm so that the hole is oriented as shown.
 - B) Install two clamps, ground wire and harness clamp.
 - C) Connect flex arm wires to PC Board.
 - D) Install housing cover.
- Note: Clamp notches must be positioned at the top.



Step 15: Verify operation...

- A) Plug power cord into housing.
- B) Connect power to light.
- C) Verify proper operation.