



WARNING

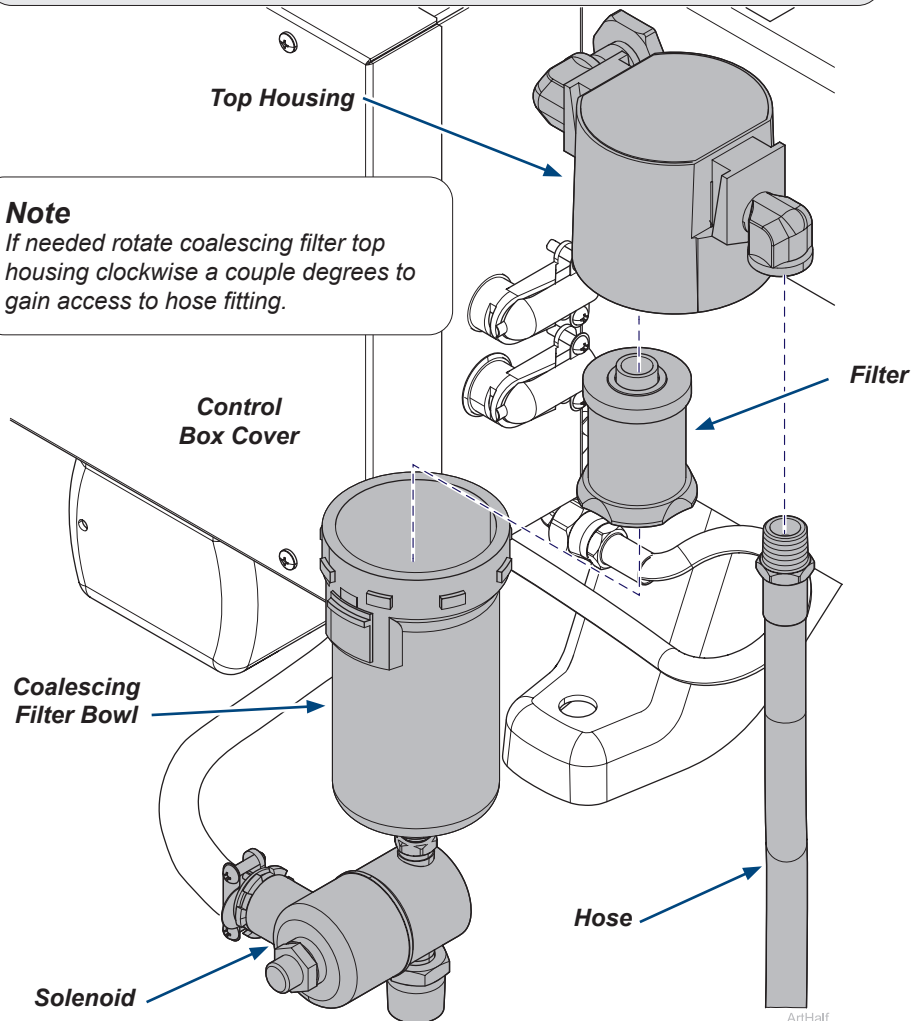
Always disconnect power to compressor before removing covers or performing any service procedures.

Step 1: Remove hose, bowl and filter from top housing.

- Un-thread hose from top housing.
- Press down on lock button, rotate coalescing filter bowl, pull down removing the coalescing filter bowl and un-thread filter.

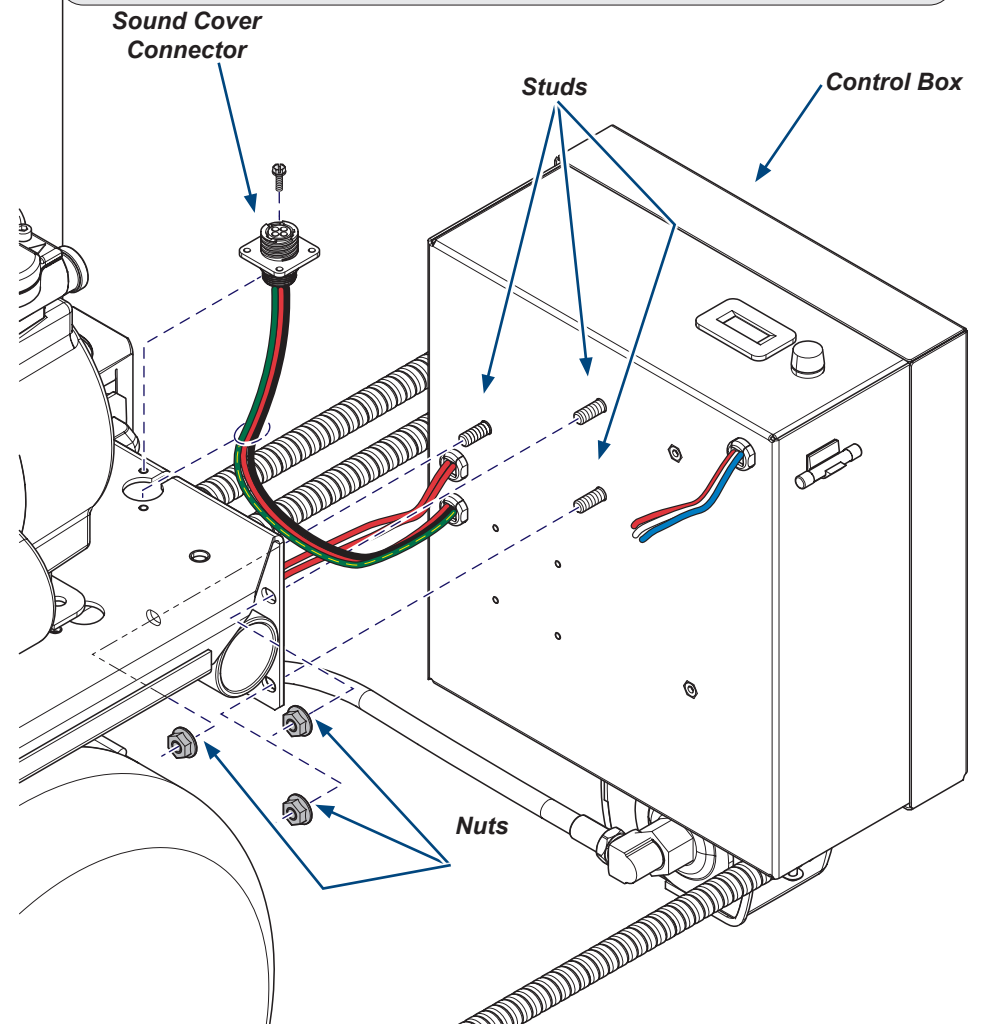
Note

If needed rotate coalescing filter top housing clockwise a couple degrees to gain access to hose fitting.



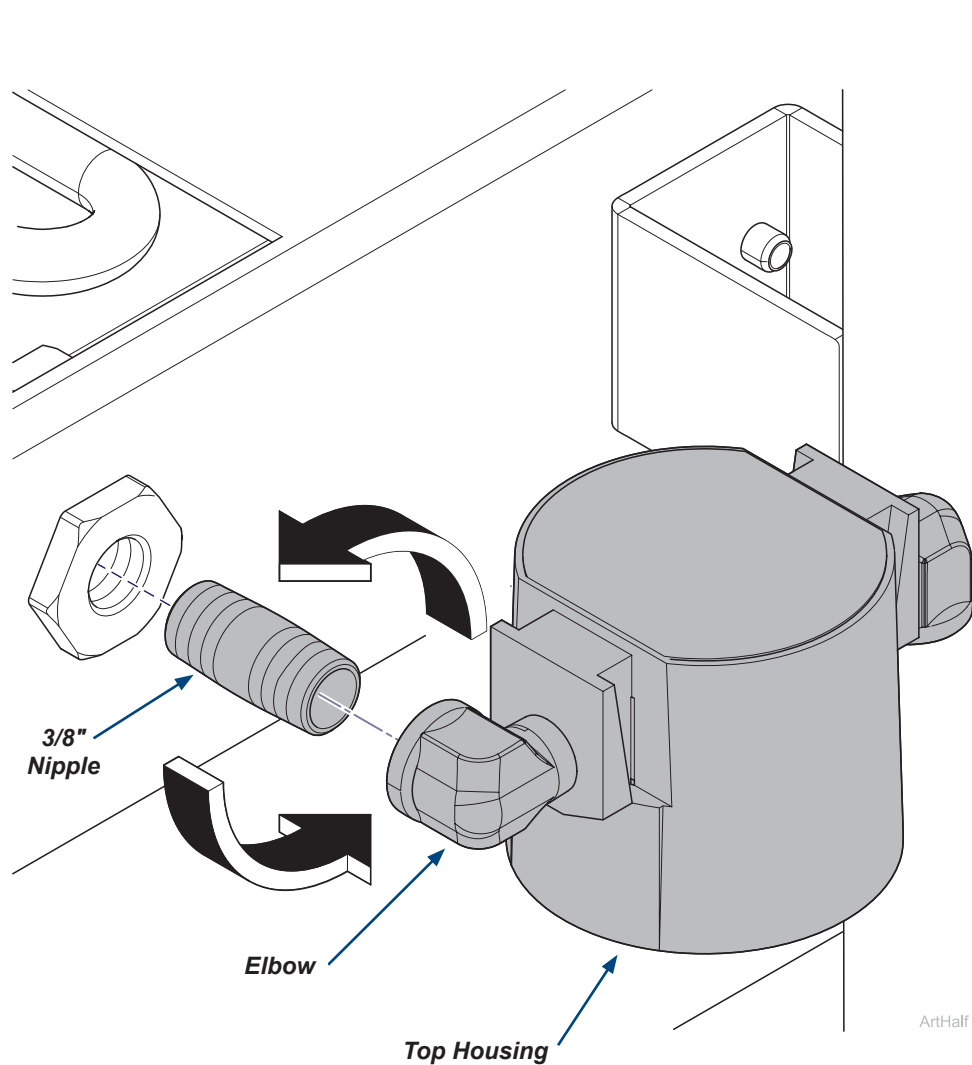
Step 2: Remove control box. (P21&P22 MODELS ONLY!)

- This step is for P21 and P22 models only, proceed to next step for all other models.
- Remove screws securing sound cover connector.
- Remove three nuts from studs securing control box.
- Remove control box, route sound cover connector wires out of slot and lower control box. Be careful with the wiring and conduit.



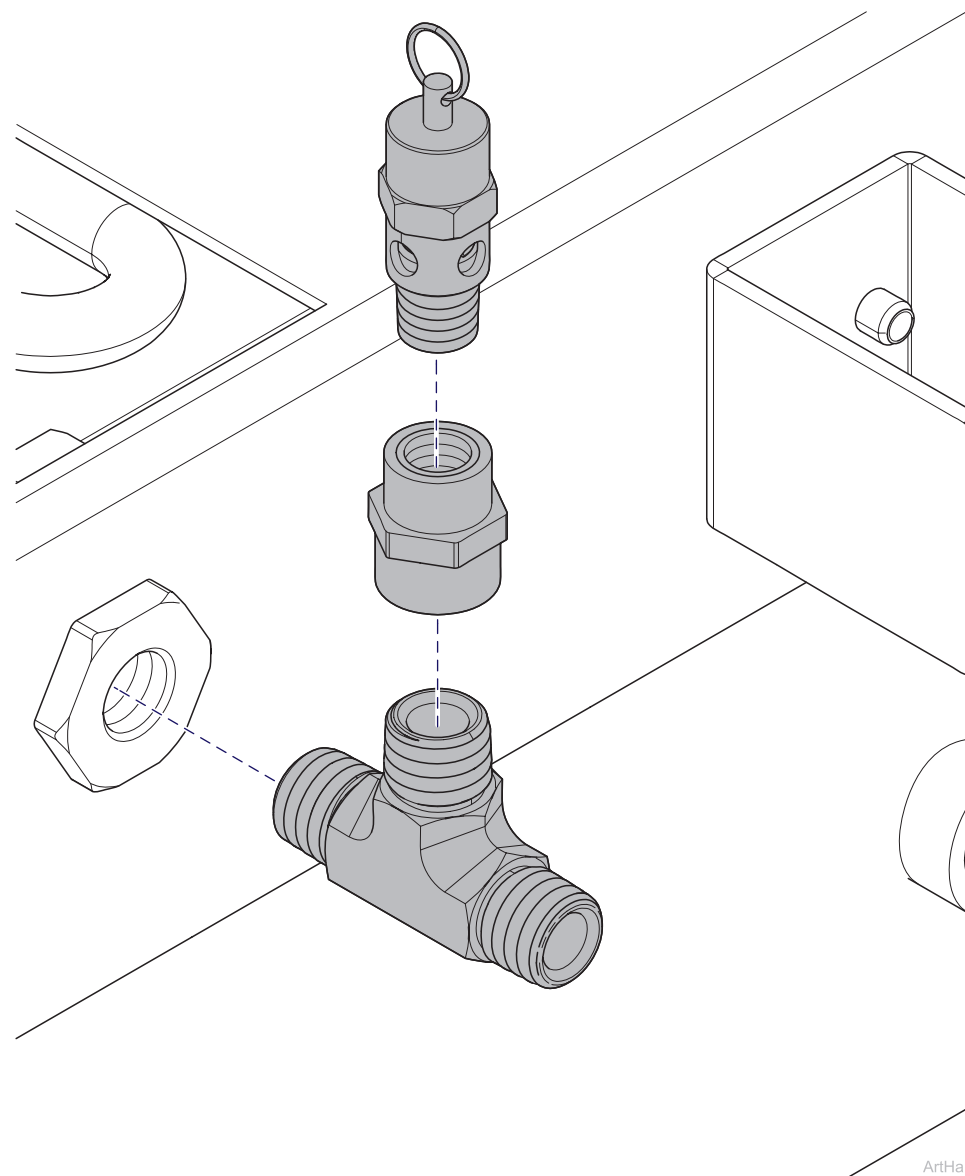
Step 3: Remove top housing.

- A) Un-thread top housing from compressor at elbow by rotating complete top housing and elbow counter clockwise.
- B) Un-thread 3/8" nipple from compressor.



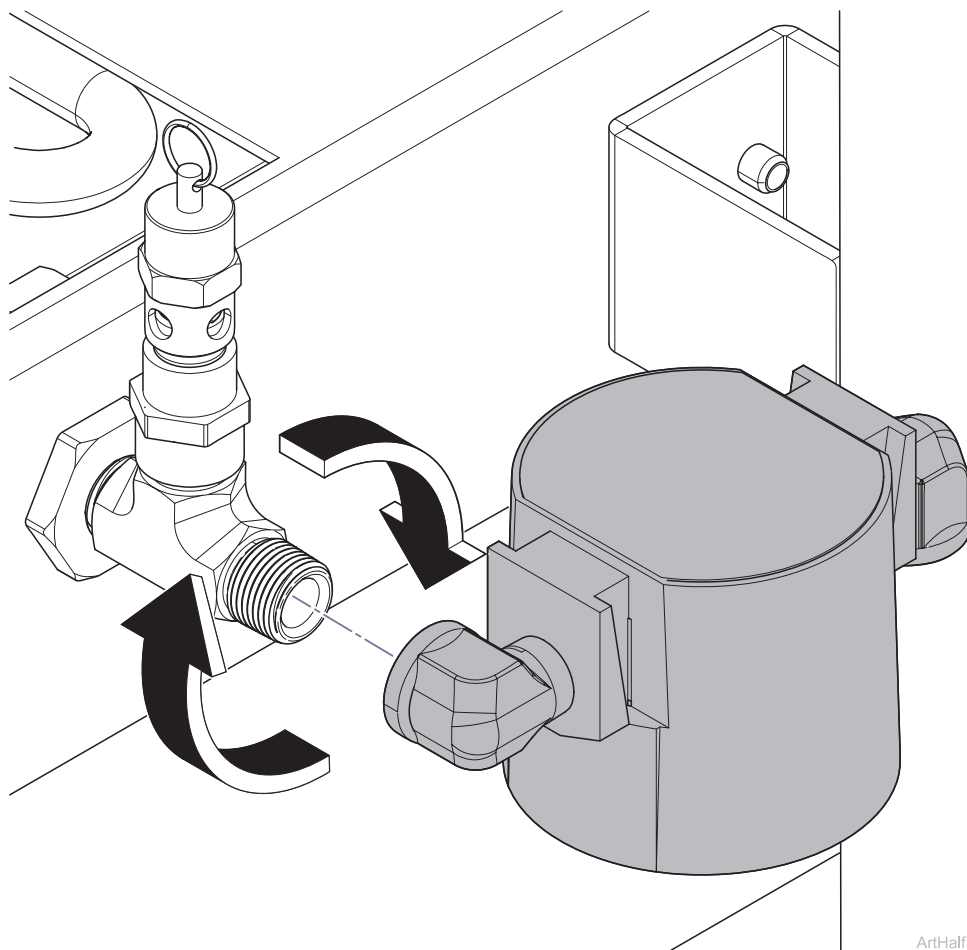
Step 4: Install pressure relief valve.

- A) Thread tee fitting into compressor.
- B) Thread 3/8" x 1/4" reducer to top of tee fitting. Then thread pressure relief into reducer.



Step 5: Install top housing.

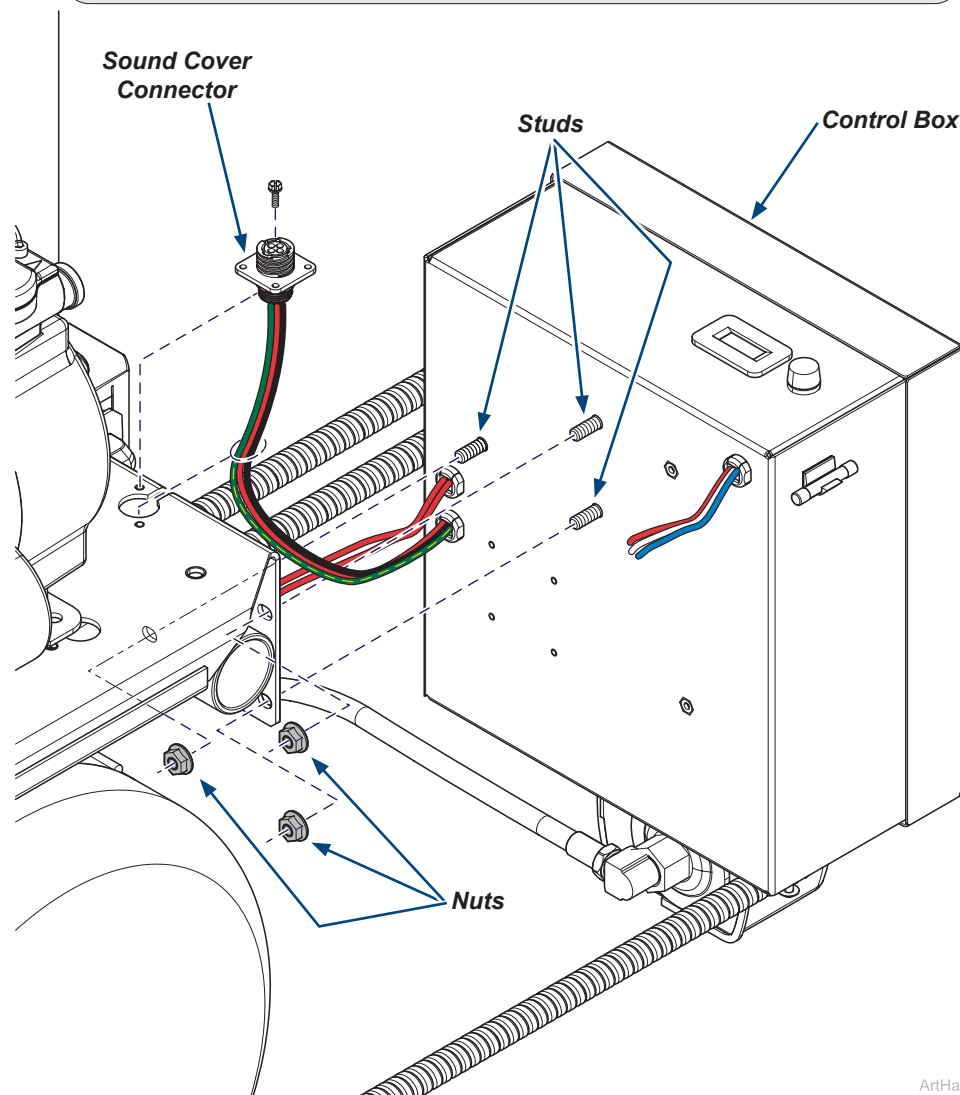
- A) Thread top hosing elbow to end of tee fitting.



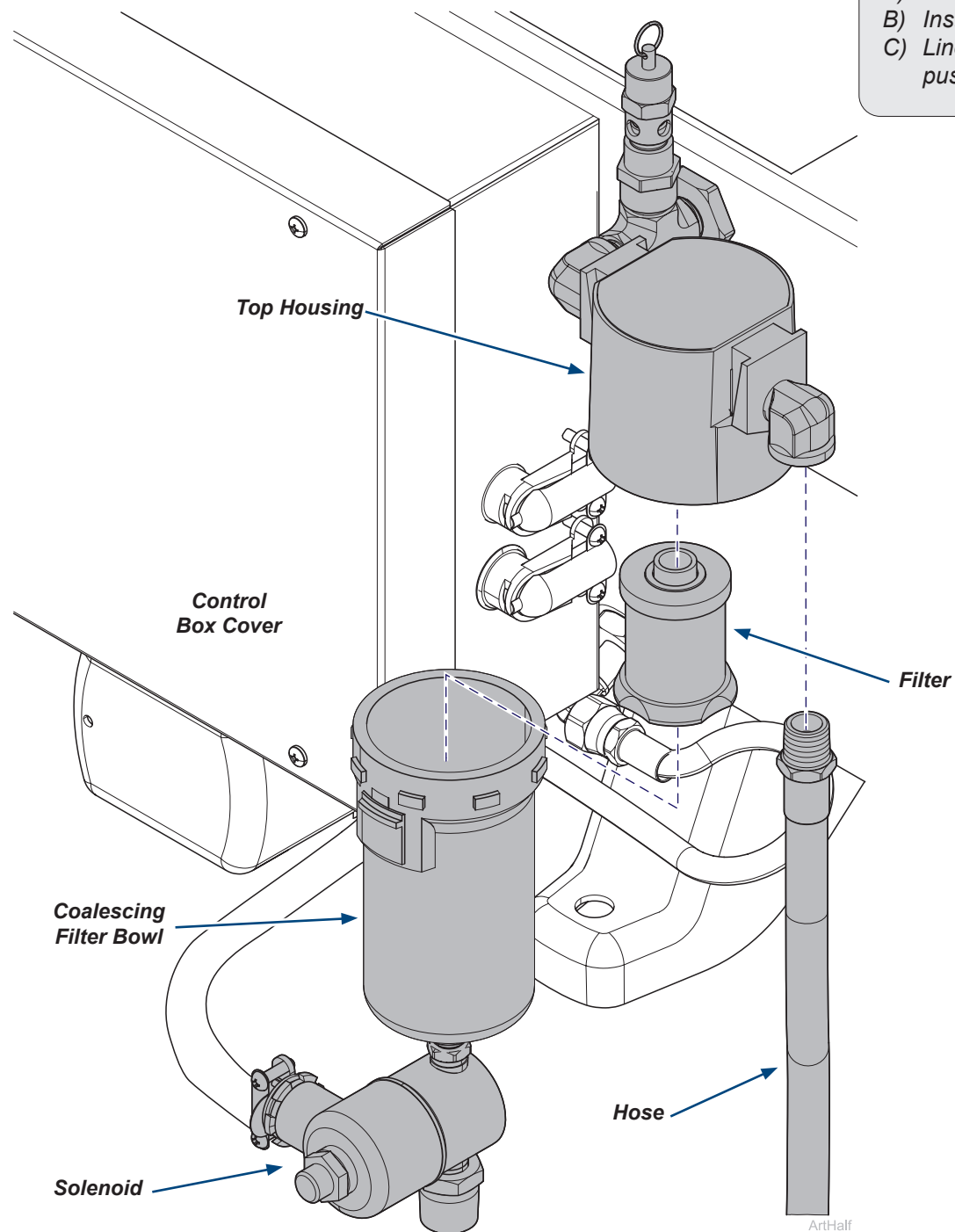
ArtHalf

Step 6: Reinstall control box. (P21&P22 MODELS ONLY!)

- A) This step is for P21 and P22 models only, proceed to next step for all other models.
B) Route sound cover connector wires into slot, then line up and insert control box studs into holes on compressor. Be careful with wiring and conduit.
C) Install three nuts on studs securing control box.
D) Install screws securing sound cover connector.



ArtHalf



Step 7: Install filter, hose and bowl.

- A) Attach hose onto right side of top housing.
- B) Install filter into filter bowl and press down until it locks in place.
- C) Line up filter bowl with top housing press down on lock button while pushing up on filter bowl, rotate filter bowl, lock into place.

Note

If needed rotate coalescing filter top housing clockwise a couple degrees to gain access to hose fitting.

Step 8: Reconnect power and test for air leaks.

- A) Use soapy water to check for air pressure leaks.
- B) Repair any leaks in the system.



Equipment Alert

Verify all leaks are sealed. Air leaks are the main cause of premature compressor failures!