

Oil-Less Compressor Maintenance Kit

Models P21, P22, P32 [002-10807-00]



WARNING

Disconnect compressor at electrical power. Drain storage tank of all air and liquid.

Applies to Models:

P21 (all)

P22 (all)

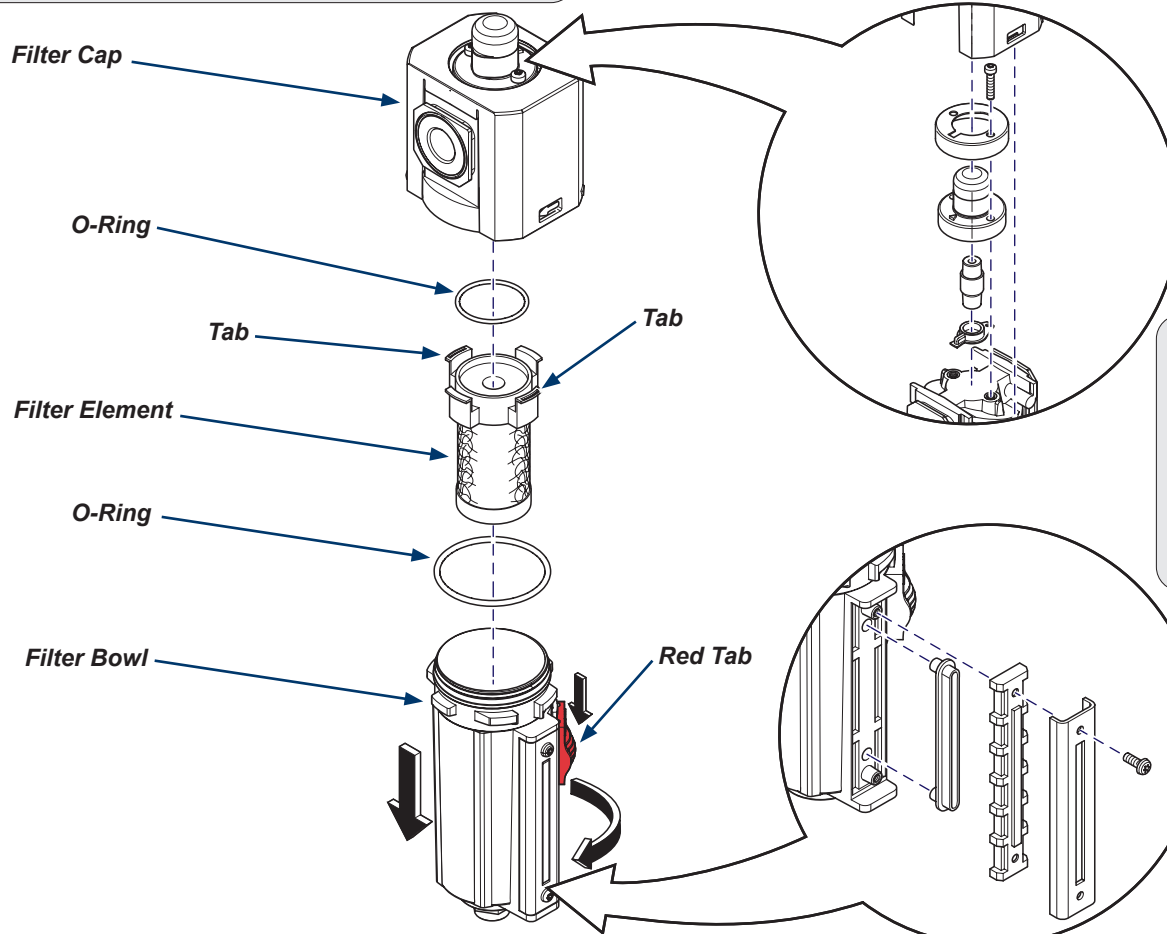
P32 (all)

(with Gast Heads)

Components:

Coalescing Filter Maintenance kit
Intake Filters (1 per head)

Step 1: Disconnect power to compressor and drain storage tank of all air and liquid.



Note

If air flow indicator is malfunctioning or leaking use included parts to repair / replace.

Step 3: Replace filter element and o-rings.

- Remove o-ring from top of filter bowl and install new one.
- Remove o-ring from inside of filter cap and install new one.
- Remove old filter element and place new filter element in the bowl and clip tabs onto top of bowl.

Note

If moisture level indicator is malfunctioning or leaking use included parts to repair / replace.

Step 2: Remove Filter Bowl.

- Push down on red tab.
- Rotate filter bowl to the stop and pull down.

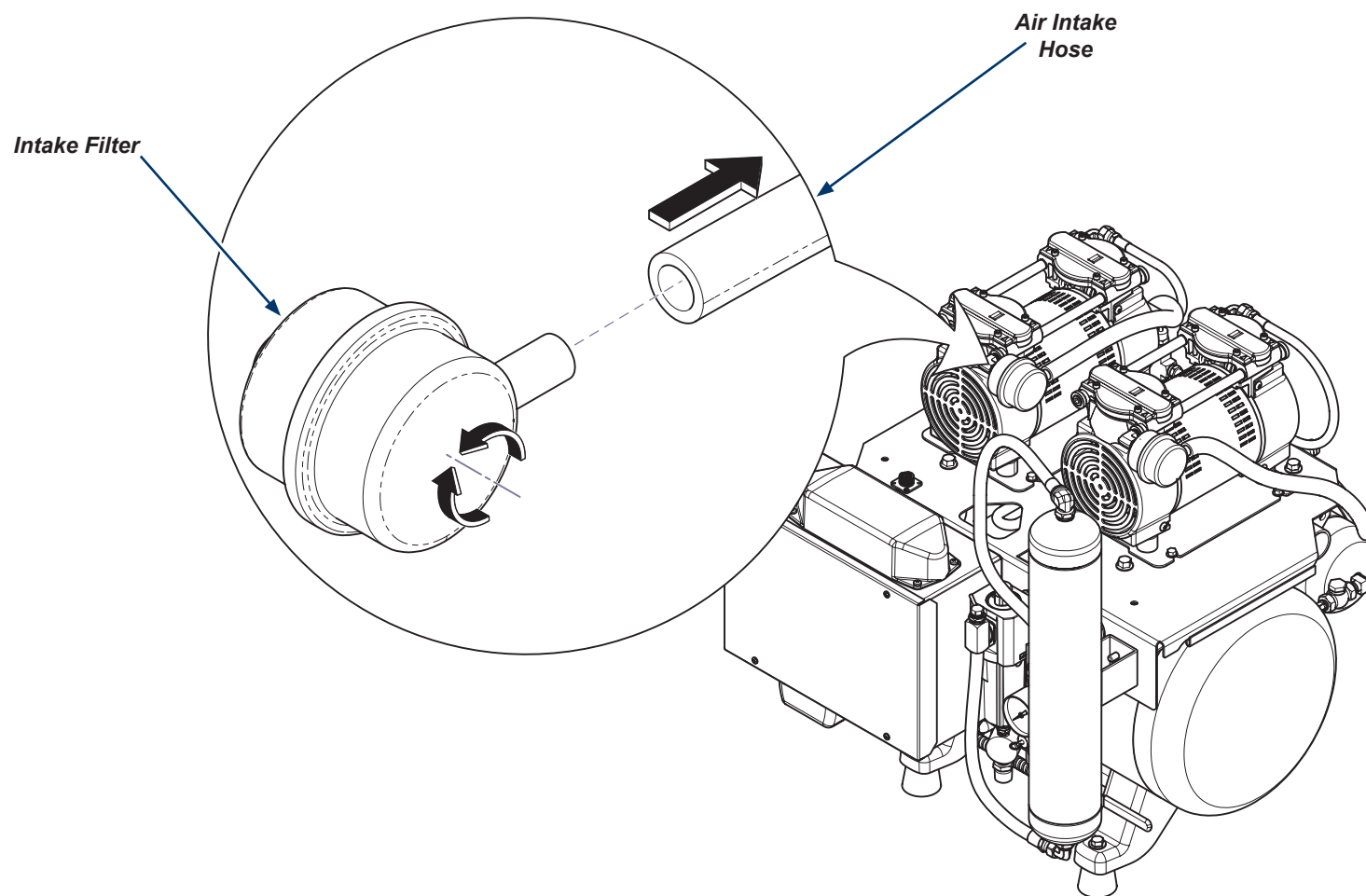
Step 4: Reinstall Filter Bowl.

- Line up and insert filter bowl up into filter cap and rotate opposite direction to lock in place.

ArtFull

Step 5: Replace intake filter elements.

- A) Firmly grab air intake hose, twist, and pull outward.
- B) Un-thread intake filter from compressor head.
- C) Thread new intake filter fully onto compressor head.
- D) Shove air intake hose onto intake filter stem.
- E) Repeat for each additional Intake filter. (P21, P22 = 2) (P32 = 3)



ArtFull