

21.5" Monitor Back Cover Replacement [Kit # 002-10844-00]

Applies to Models:

153963 (-000 thru -008)

153964 (-010 thru -018)

Note

Use to install the Monitor Back Cover for a 24" monitor that is replacing a smaller size monitor.

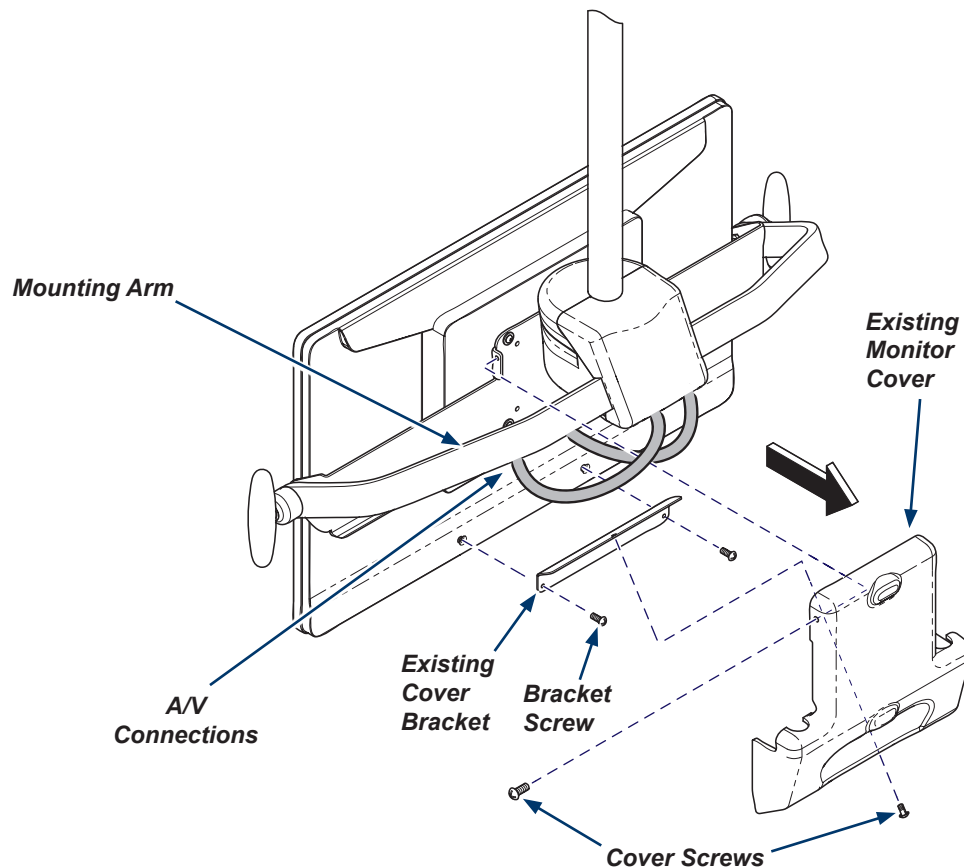
Step 1: Remove monitor cover.

- Disconnect facility power to the track.
- Remove screws attaching monitor cover to mounting arm.
- Remove existing monitor cover.
- Remove existing cover bracket.
- Disconnect all Audio and Video (A/V) connections.

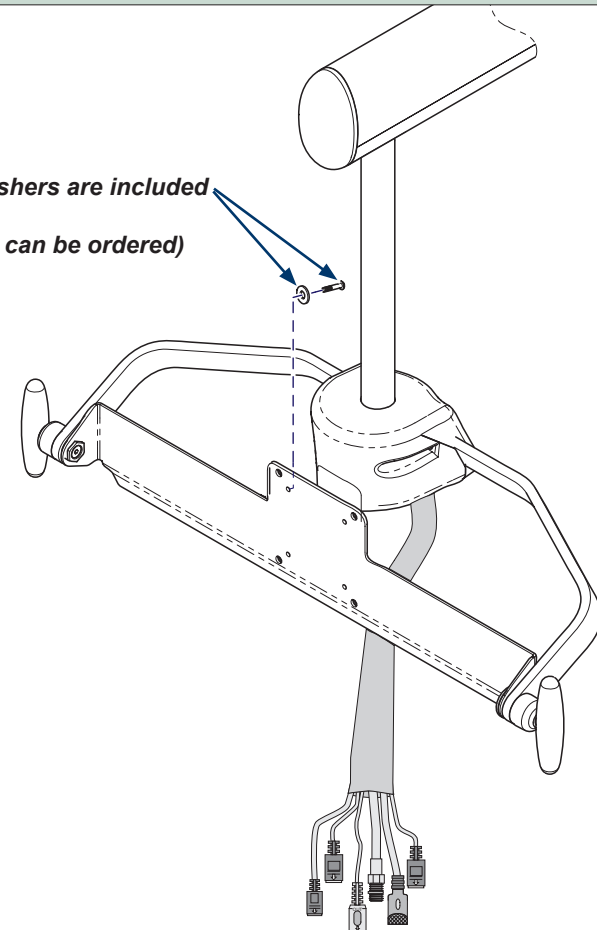
Note: Metric screws and washers are required to attach the monitor to the mounting arm.
Standard monitor screws match the outside holes.

Step 2: Remove monitor from mounting arm.

- Remove and retain screws connecting monitor to mounting arm.
- Remove monitor and place in safe area.



Metric Screw/Washers are included
(002-10087-01 kit can be ordered)



Step 3: Connect cables into the back of the monitor.

Note: RF cable not used, for a clean appearance install cables under monitor cover.



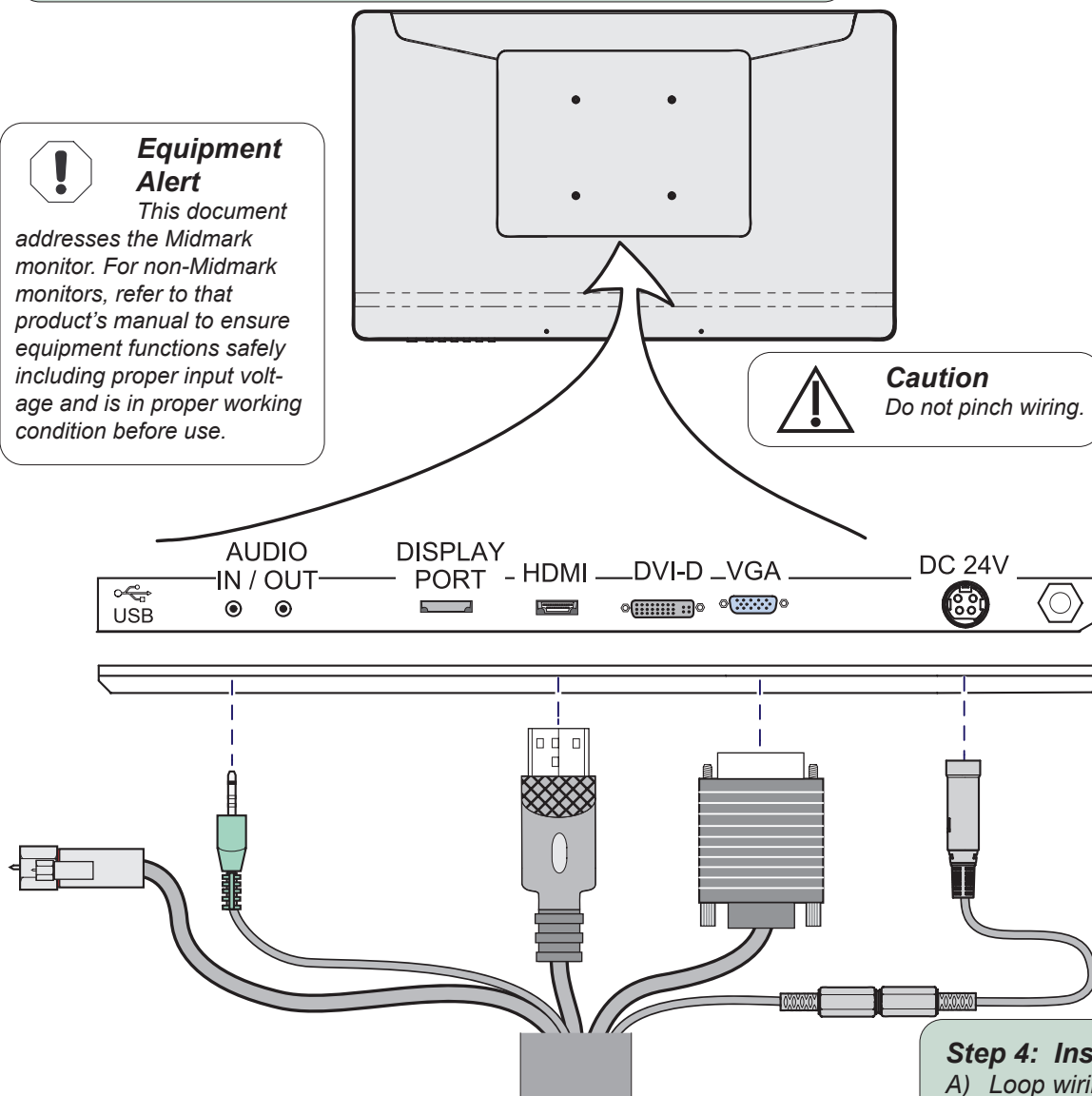
Equipment Alert

This document addresses the Midmark monitor. For non-Midmark monitors, refer to that product's manual to ensure equipment functions safely including proper input voltage and is in proper working condition before use.



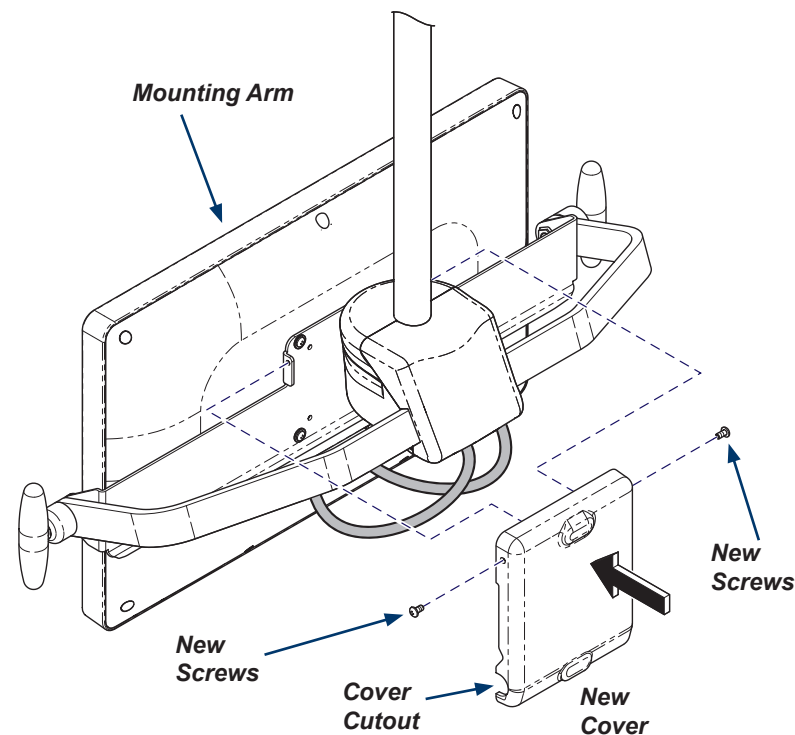
Caution

Do not pinch wiring.



Equipment Alert

Verify the cover fits.



Step 4: Install monitor and new monitor cover.

- Loop wiring bundles below connections as shown.
- Align harnesses in cover cutouts.
- Using screws and washers, install monitor to mounting arm.
- Using new screws from kit, install new cover to monitoring arm and bracket.
- Connect facility power to track then verify operation.
See monitor user guide for operation information.