

17" to 21.5" Monitor Conversion Kit Install Guide (002-10841-00)

Special Tools:
none

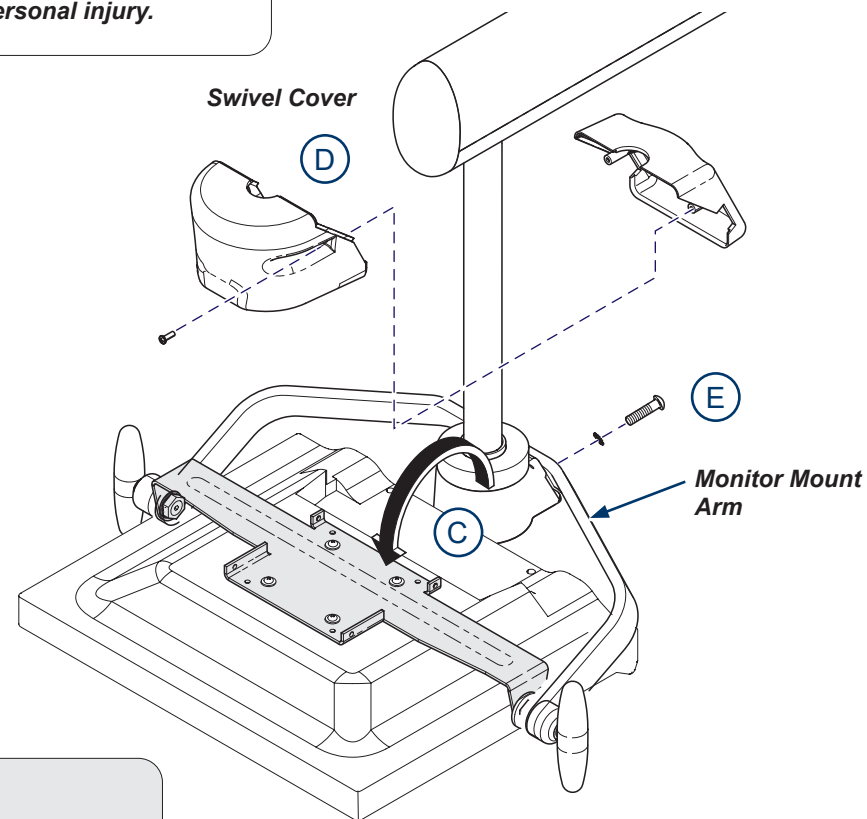
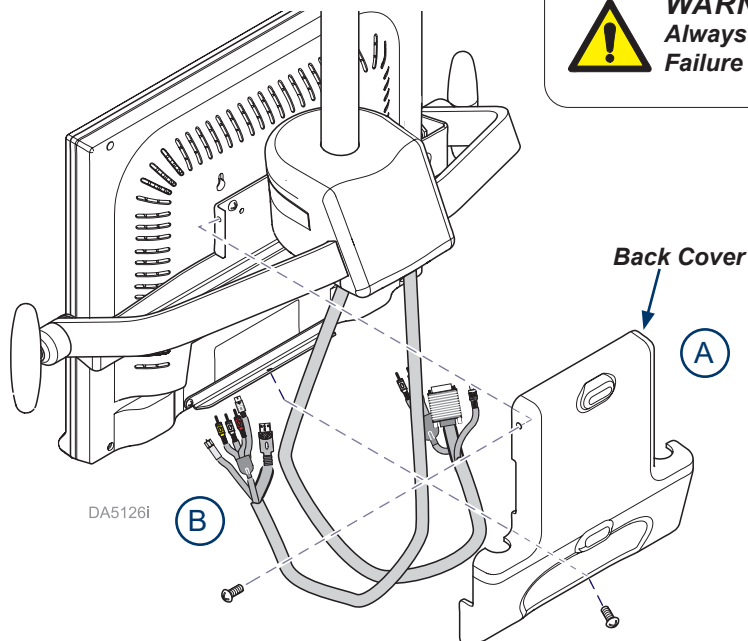
Note

Use this kit to upgrade an existing 17" Track Light Monitor unit with a 21.5" Monitor.



WARNING

Always disconnect power before removing covers.
Failure to do so may result in personal injury.

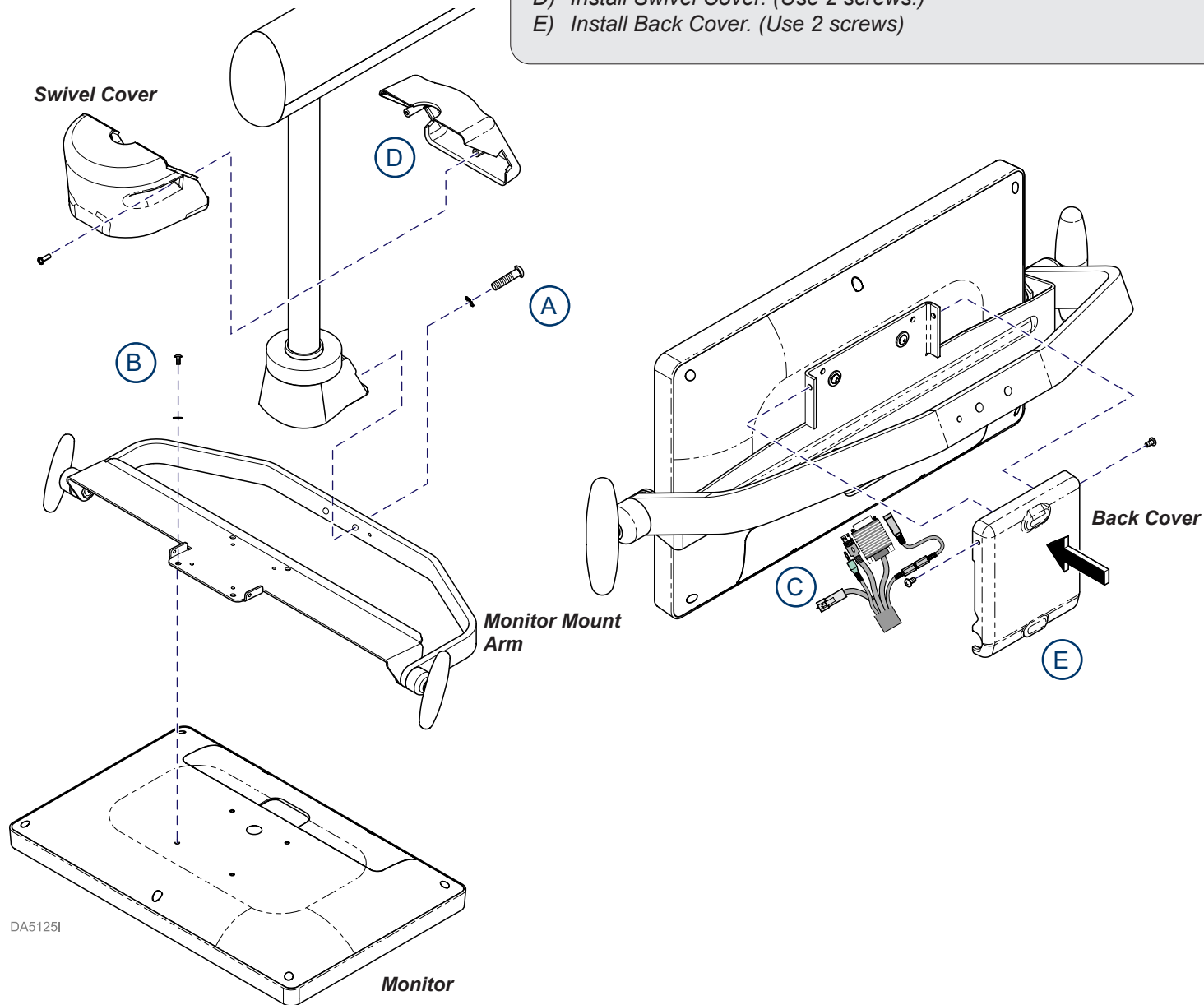


Step 1: Remove Existing Monitor.

- A) Remove monitor back cover (2 or 3 screws depending on the back cover style).
- B) Unplug all of the A/V connectors from the monitor.
- C) Rotate monitor 90° forward to access the swivel cover.
- D) Remove the swivel cover (2 screws).
- E) Remove the whole monitor mount arm, with monitor attached. (2 screws with lock washers).

Step 2: Install 21.5" Monitor and Monitor Mount Arm.

- A) Mount the monitor mount arm onto the flex arm. (Use 2 washers and screws.)
- B) Install monitor onto monitor mount arm. (Use 4 washers and the 4 metric screws included in the kit.)
- C) Plug all of the A/V connections from the flex arm into the monitor.
- D) Install Swivel Cover. (Use 2 screws.)
- E) Install Back Cover. (Use 2 screws)



Step 3: Install 24 VDC Power Supply for the 21.5" Monitor.

- A) Remove the video power cover at the foot end of the track (4 screws).
- B) Remove the power supply cover and discard (2 washers and screws).
- C) Unplug connections and remove the 12 VDC power supply. Discard.
- D) Install the 24 VDC power supply and plug power connections into it.
- E) Install the adapter harness and cable to connect to the monitor power harness.
- F) Start screws into the power supply cover and mount together with the power supply.
- G) Insert cable tie push mount into the new power supply cover, then install over the power supply (2 screws).
Gather excess power harness, wrap with a cable tie and attach to push mount in.
- H) Install the video power cover back onto the track. Reference step A).
- I) Connect mains power to the track light monitor and verify operation of the 21.5" monitor.

