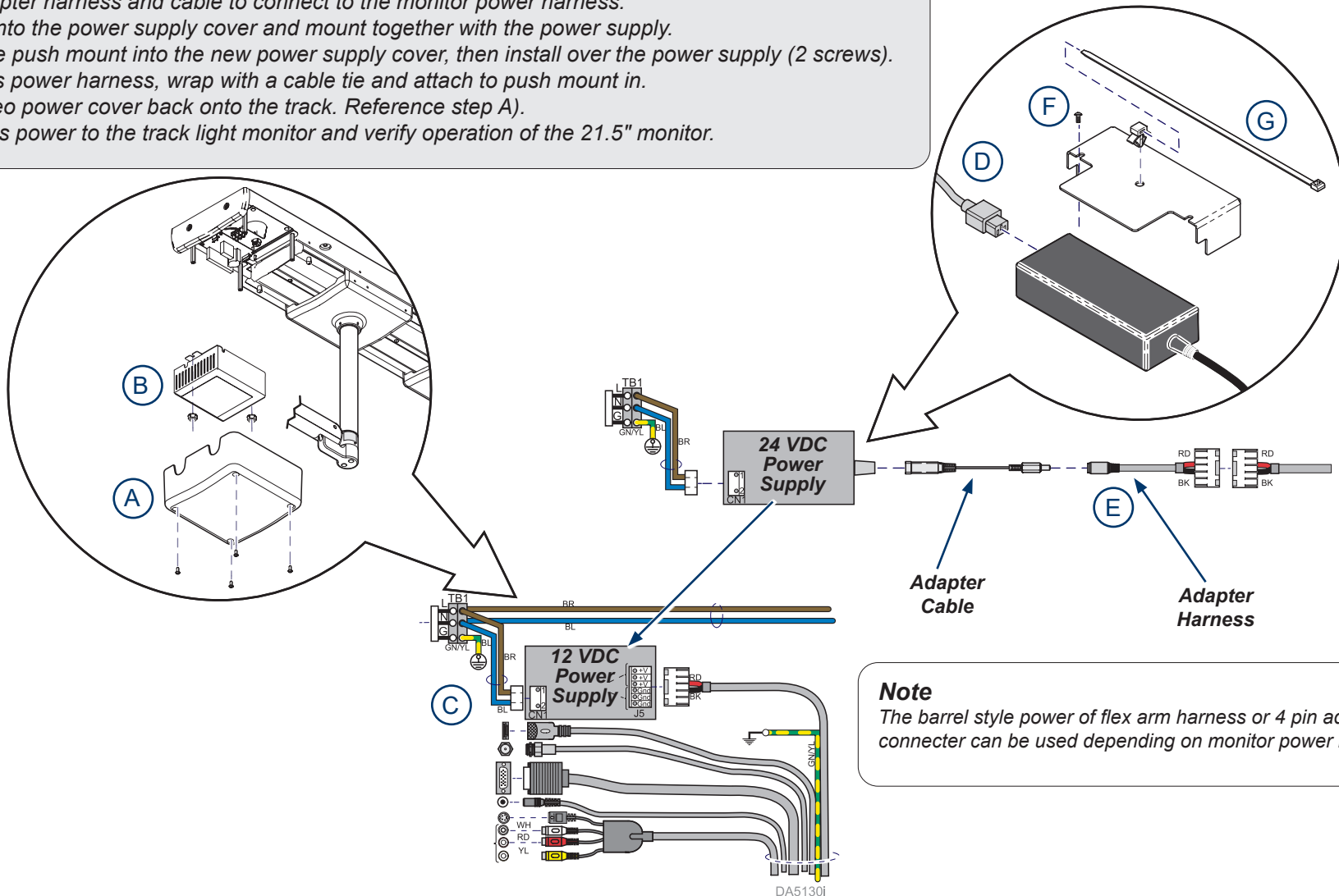


Steps: Install 24VDC Power Supply for the 21.5" Monitor.

- A) Remove the video power cover at the foot end of the track (4 screws).
- B) Remove the power supply cover and discard (2 washers and screws).
- C) Unplug connections and remove the 12 VDC power supply. Discard.
- D) Install the 24 VDC power supply and plug power connections into it.
- E) Install the adapter harness and cable to connect to the monitor power harness.
- F) Start screws into the power supply cover and mount together with the power supply.
- G) Insert cable tie push mount into the new power supply cover, then install over the power supply (2 screws).
Gather excess power harness, wrap with a cable tie and attach to push mount in.
- H) Install the video power cover back onto the track. Reference step A).
- I) Connect mains power to the track light monitor and verify operation of the 21.5" monitor.

17" Monitor System



Note

The barrel style power of flex arm harness or 4 pin adapter in connector can be used depending on monitor power input.

24" Monitor System

Step 3: Install 24VDC Power Supply for the 21.5" Monitor.

- A) Remove the video power cover at the foot end of the track (4 screws).
- B) Remove the power supply cover and discard (2 washers and screws).
- C) Unplug connections and remove the 19 VDC power supply. Discard.
- D) Install the 24 VDC power supply and plug power connections into it.
- E) Install the adapter harness to connect to the monitor power harness.
- F) Start screws into the power supply cover and mount together with the power supply.
- G) Insert cable tie push mount into the new power supply cover, then install over the power supply (2 screws).
Gather excess power harness, wrap with a cable tie and attach to push mount in.
- H) Install the video power cover back onto the track. Reference step A).
- I) Connect mains power to the track light monitor and verify operation of the 21.5" monitor.

Note

24" to 21.5" will not require 015-3638-00 or 015-10334-00

Note

The barrel style power of flex arm harness or 4 pin adapter in connector can be used depending on monitor power input.

