

Flex Arm Post with Bearing Kit [002-10551-0x]

Applies to Models:
Dental Lights



WARNING

To prevent risk of shock always disconnect power before removing covers or performing any service procedure.

Flex Arm Light Post



Ceiling Flex Arm Light Post

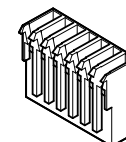


Set Screw

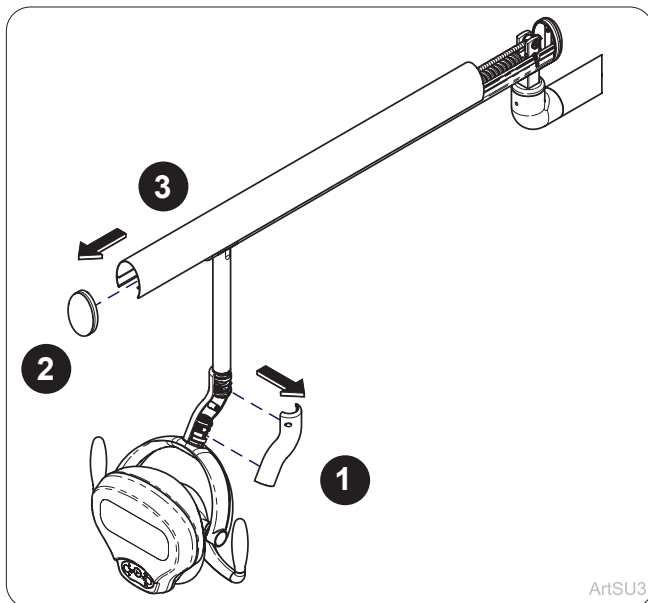


Klipring

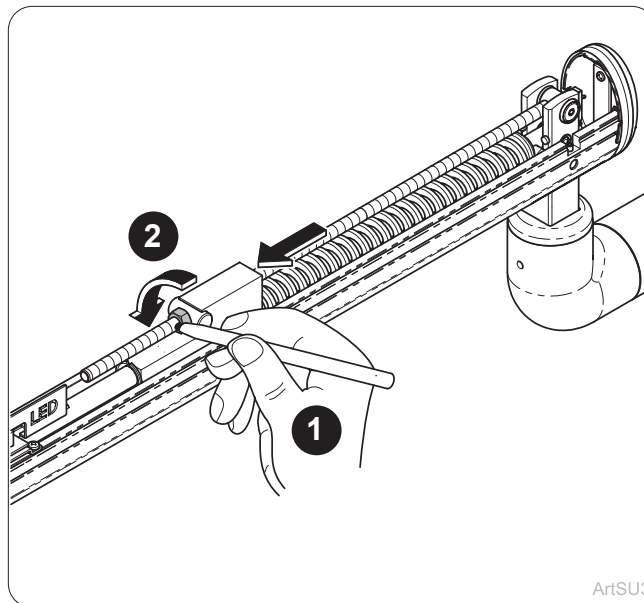
Touch Pad Harness



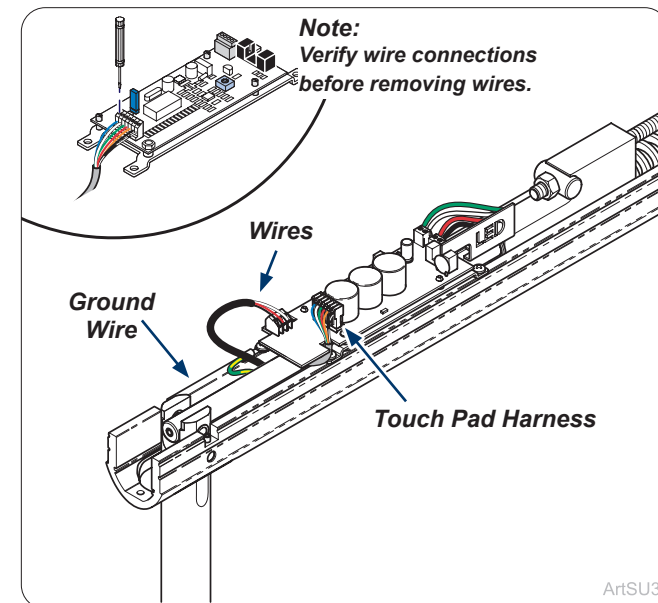
ArtFull



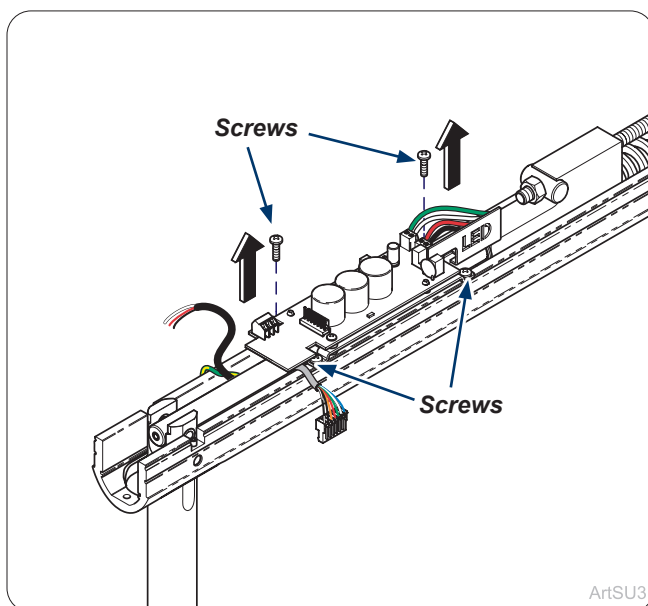
Step 1:
Remove covers as shown.



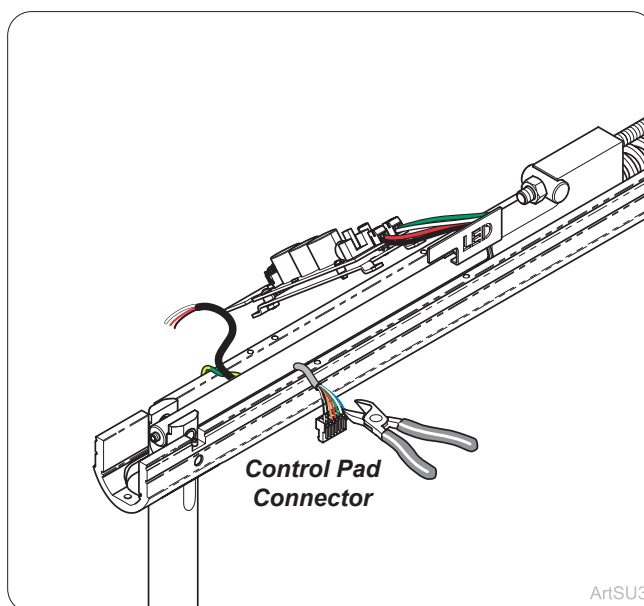
Step 2:
Mark nut location in front of block and loosen nut to take tension off of spring. Do NOT remove nut.



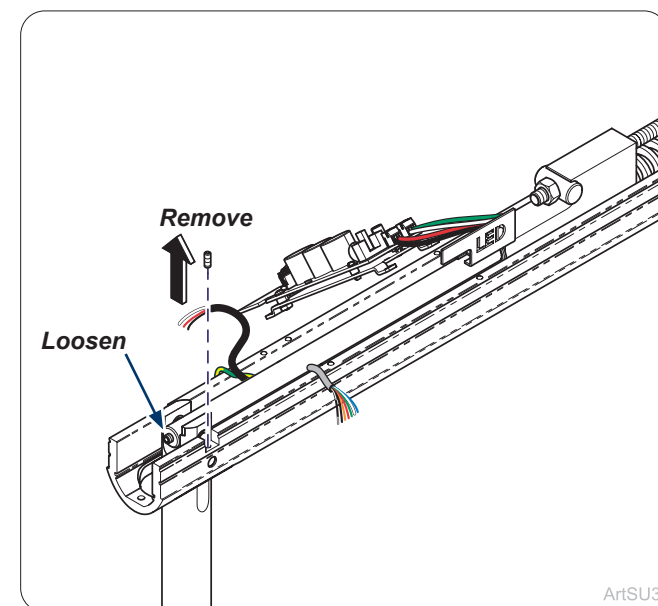
Step 3:
Remove wiring from the front of PC board leaving rear wires attached.



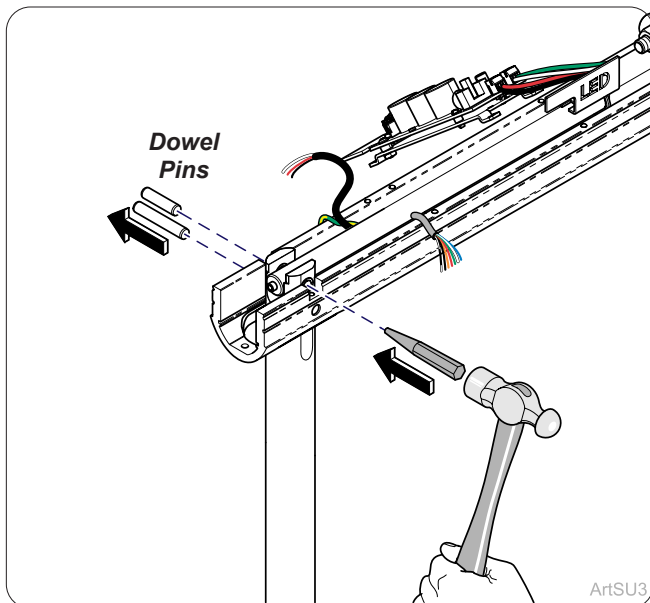
Step 4:
Remove screws (4) from PC Board mount and move board to the side.



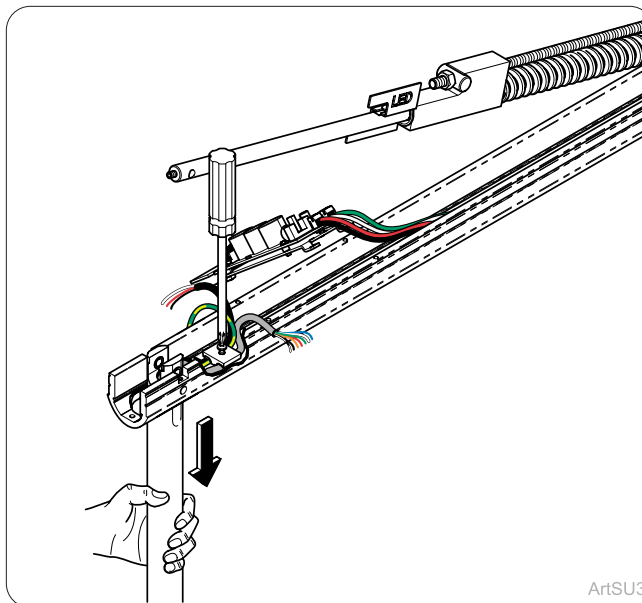
Step 5:
Remove control pad connector from wires.



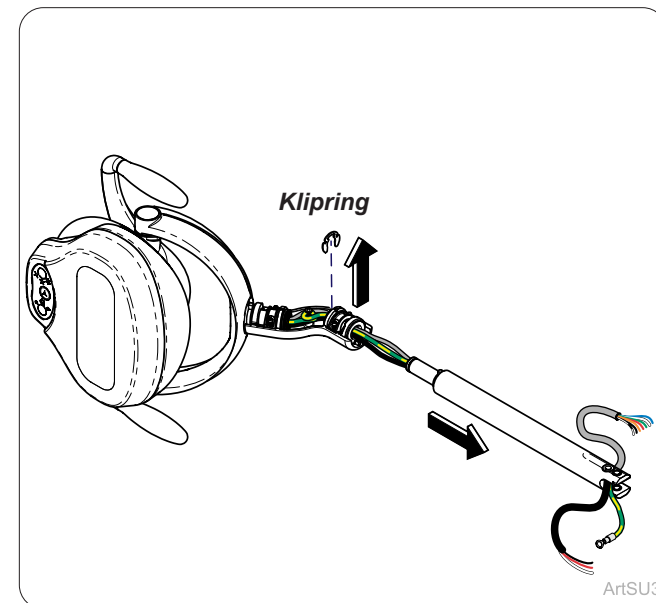
Step 6:
Remove side set screw and loosen front set screw in mounting rod.



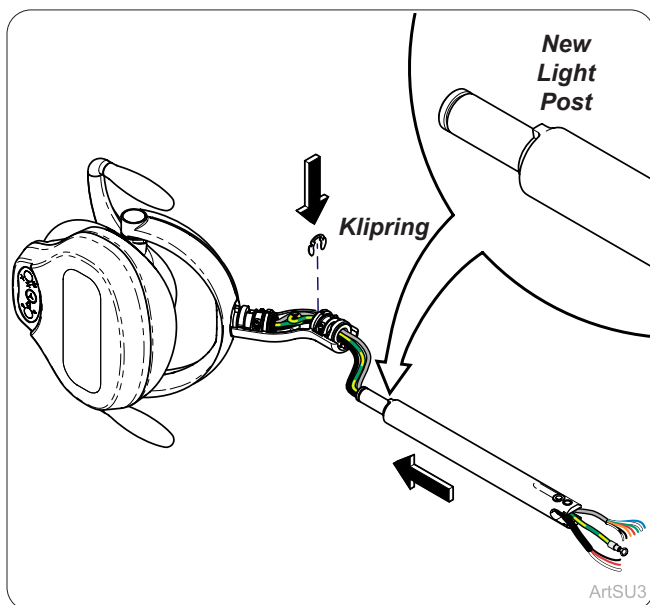
Step 7:
Remove dowel pins (2) from light head post and flex arm rod.



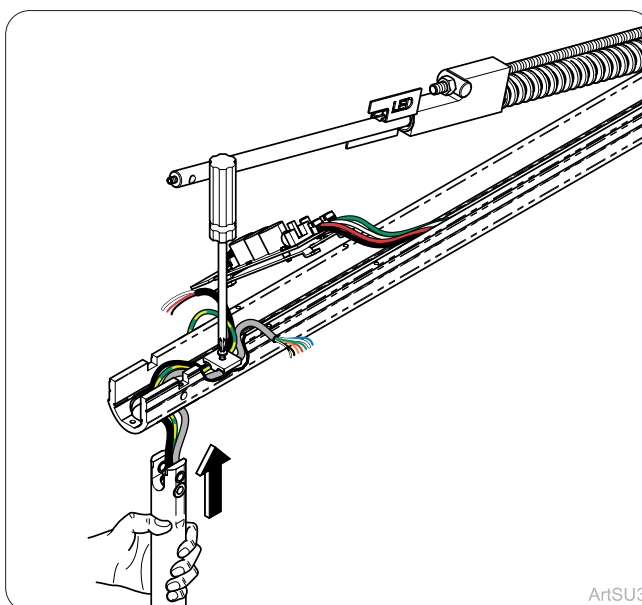
Step 8:
Remove screw and wire holder in bottom of flex arm and remove light head assembly and post.



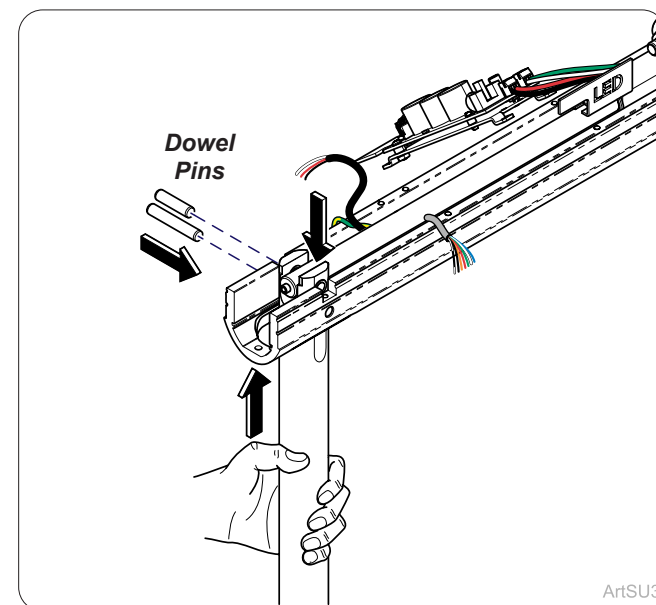
Step 9:
Remove Klipring and light head post from light head assembly. Keep washer inside of pivot joint on wires.



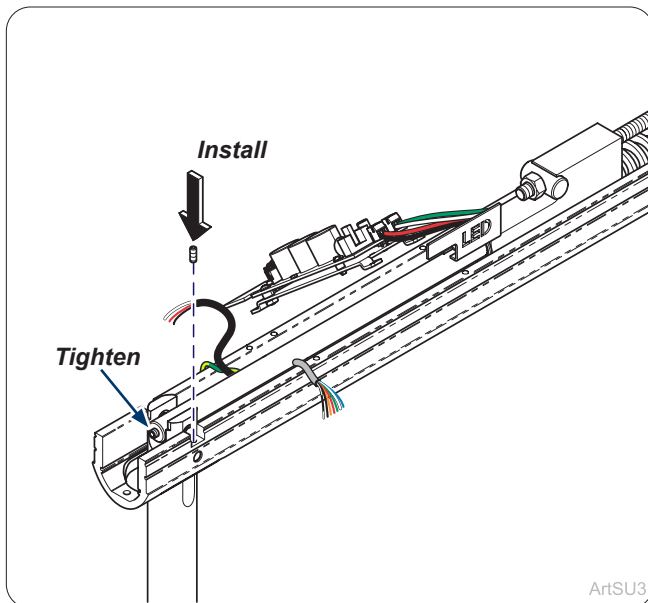
Step 10:
Slide wires through new light post and slide post into washer then install Klipring into post.



Step 11:
Run wires through bottom of flex arm and install wire holder.

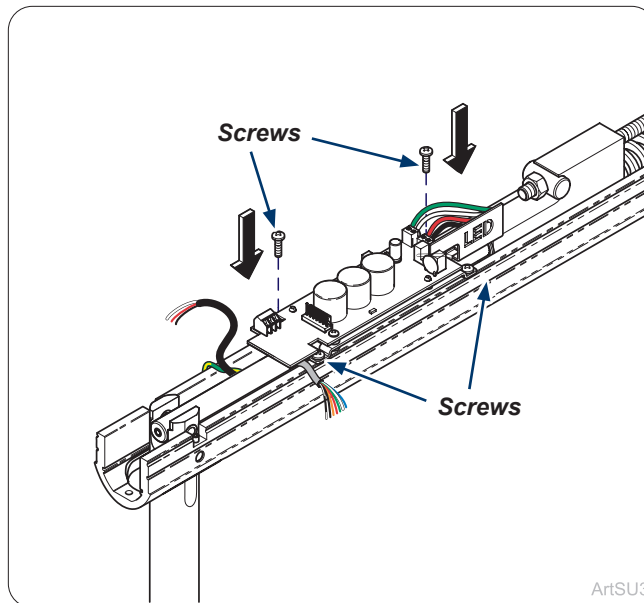


Step 12:
Install light post into bottom of flex arm with flex arm rod in place and insert dowel pins (2).



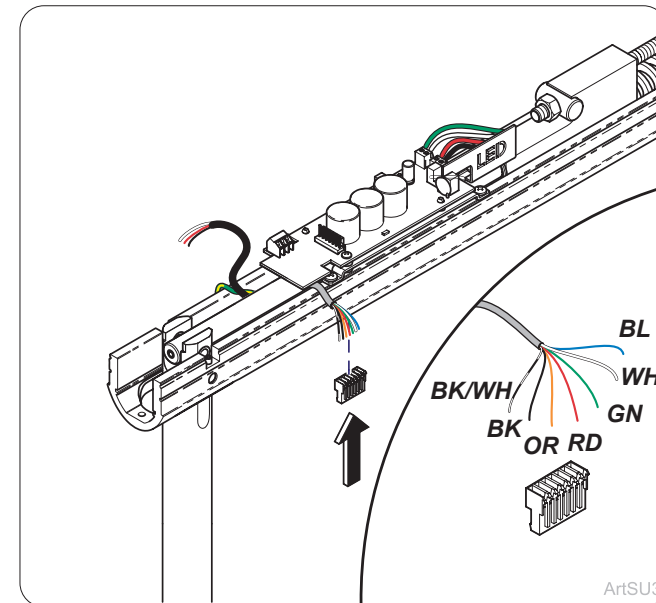
ArtSU3

Step 13:
Install set screw and retighten set screw.



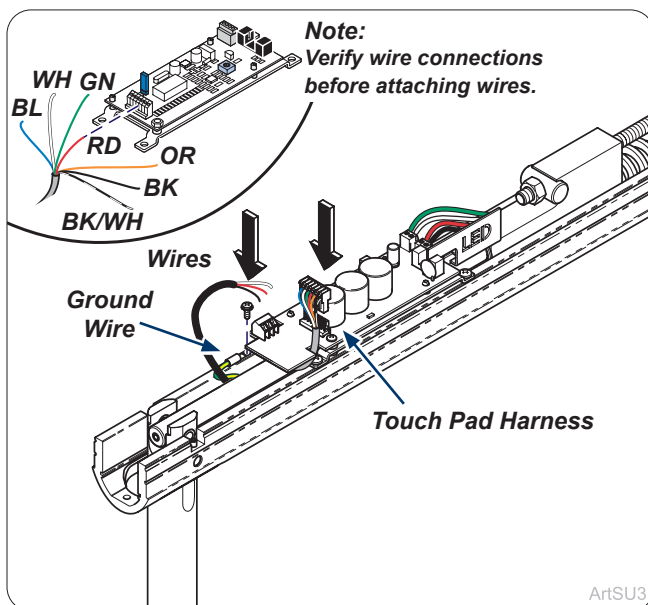
ArtSU3

Step 14:
Install PC Board assembly onto flex arm with screws (4).



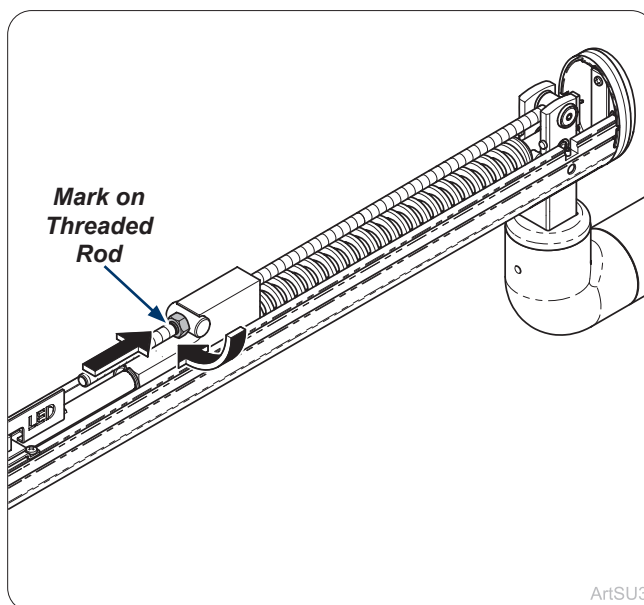
ArtSU3

Step 15:
Install new touch pad wire connector.



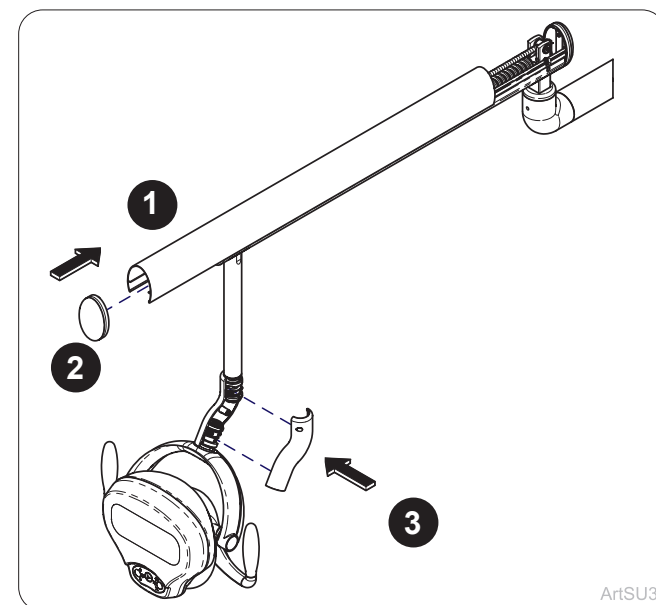
ArtSU3

Step 16:
Install ground wire and wiring to PC Board.
Note: Not all flex arms have grounding wires connect when present.



ArtSU3

Step 17:
Tighten spring tension with nut moving to the marked line on threaded rod.
Note: Test flex arm to make sure it does not drift.



ArtSU3

Step 18:
Install cover for flex arm and light head as shown.