



WARNING

Always disconnect power to chair before removing covers or performing any service procedures.

Note

Some illustrations show components removed for clarity only.

Step 1: Position chair.

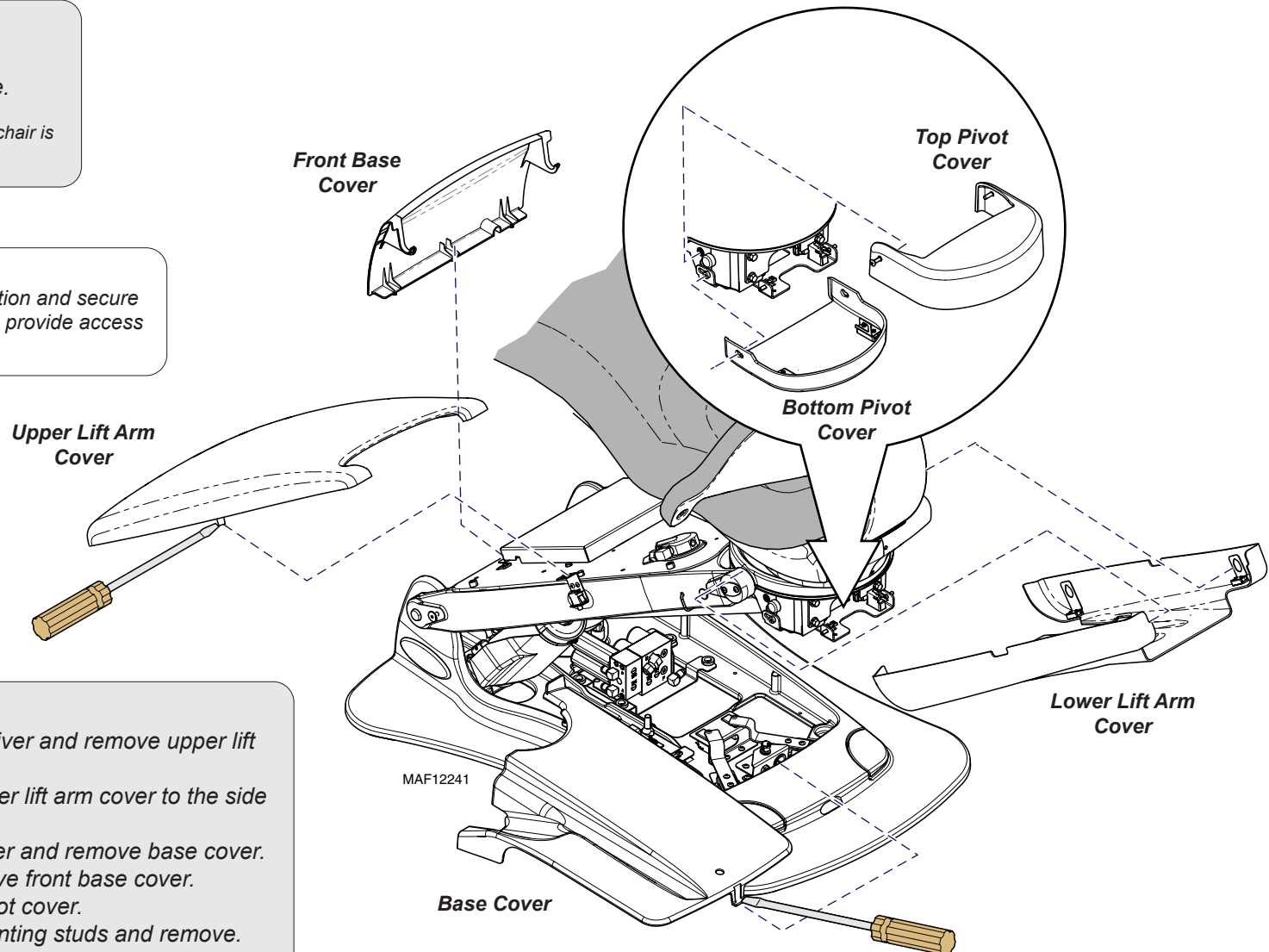
- Raise chair seat 26-28" above floor.
- Disconnect chair from power source.

Note: Upper lift arm cover cannot be removed if chair is raised higher than 28" above floor.



Equipment Alert

On LR and console models, position and secure flex arm mounted components to provide access to the base cylinder.



Step 2: Remove covers.

- Release clips using a slotted screwdriver and remove upper lift arm cover.
- Working one side at a time, move lower lift arm cover to the side and back to free from mounting pins.
- Release clip with a slotted screw driver and remove base cover.
- Pull out then lift from bottom, to remove front base cover.
- Loosen two screws to remove top pivot cover.
- Maneuver bottom pivot cover off mounting studs and remove.

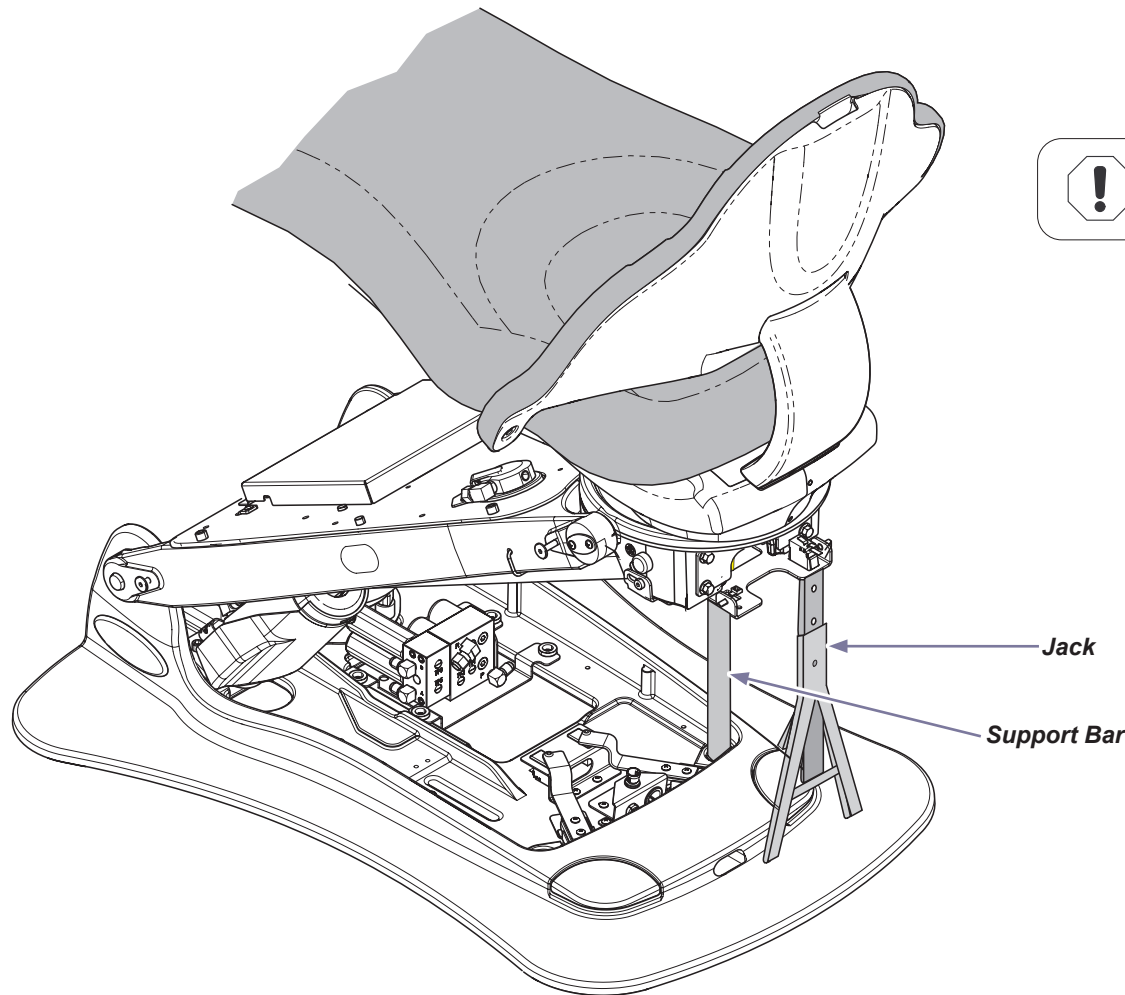
Step 3: Support Chair.

- A) Connect chair to power source.
- B) Place a support bar into base hole and align with chair frame pocket, then lower chair onto bar.
- C) Disconnect chair from power source.
- D) Place a bottle jack (or 4X4 wood block) under the pivot for extra support.



DANGER

Verify that the chair is securely supported before removing motor pump.
Failure to do so could result in serious personal injury or death!



Equipment Alert

Do not pinch wiring when lowering chair onto support bar.

MAF12240i

Step 4:
Remove pump cover.

Step 5:
Tag, then disconnect motor pump electrical leads.

Note
Place towel or equivalent beneath hydraulic lines and fittings to absorb any residual hydraulic fluid.

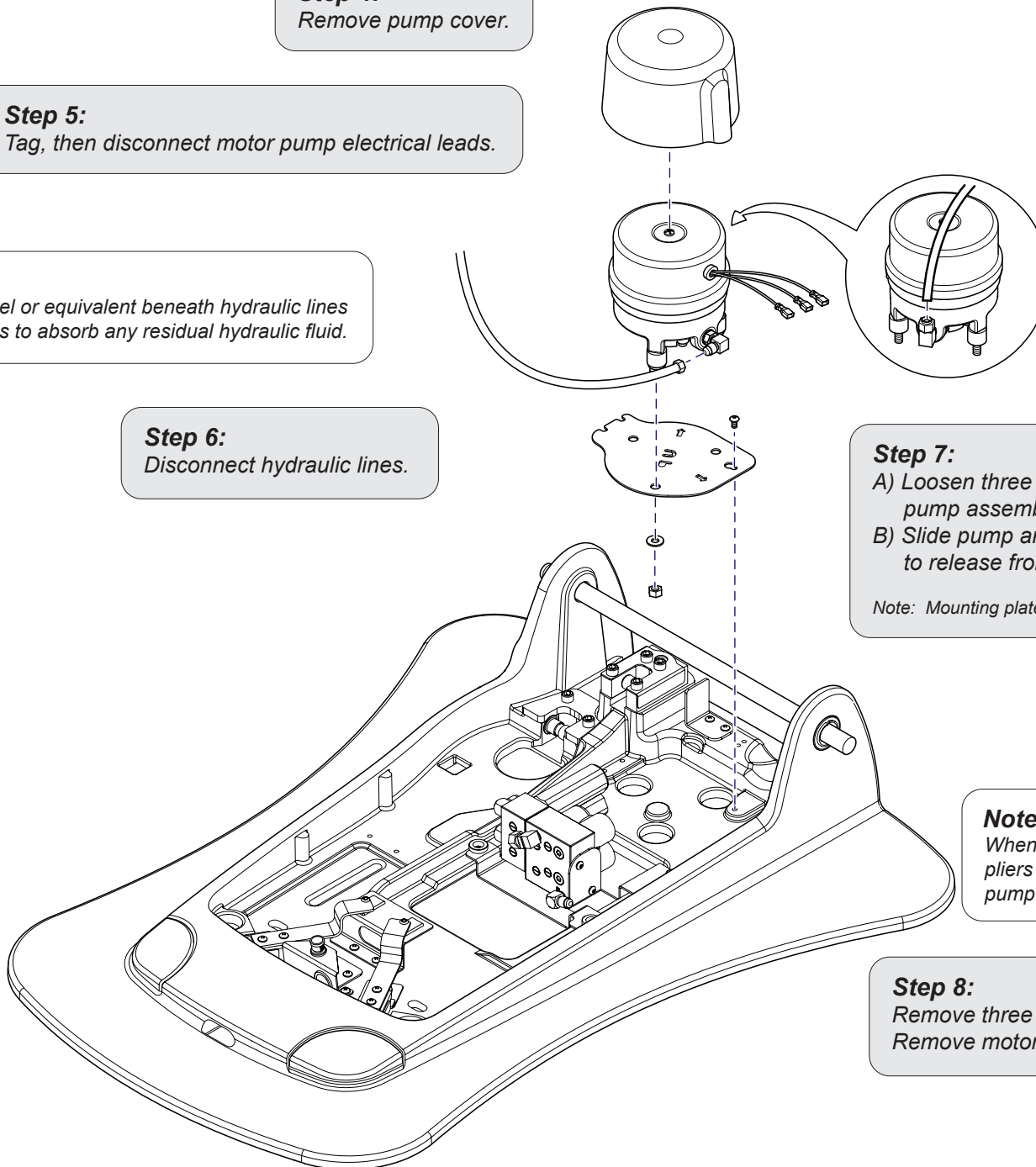
Step 6:
Disconnect hydraulic lines.

Step 7:
A) Loosen three screws securing mounting plate and pump assembly to base.
B) Slide pump and mounting plate assembly over slightly to release from base and remove.

Note: Mounting plate screws do not need to be completely removed.

Note
When removing motor pump mounting nuts, use a pliers to prevent rubber mounting grommets on motor pump from turning.

Step 8:
Remove three motor pump mounting nuts and washers.
Remove motor pump from mounting plate.



MAF12239I

**Equipment Alert**

Do not over-tighten mounting nuts.
Snug up nuts and turn 1/2 turn.

Step 9:

Install motor pump on mounting plate
and secure washers and mounting nuts.

Step 10:

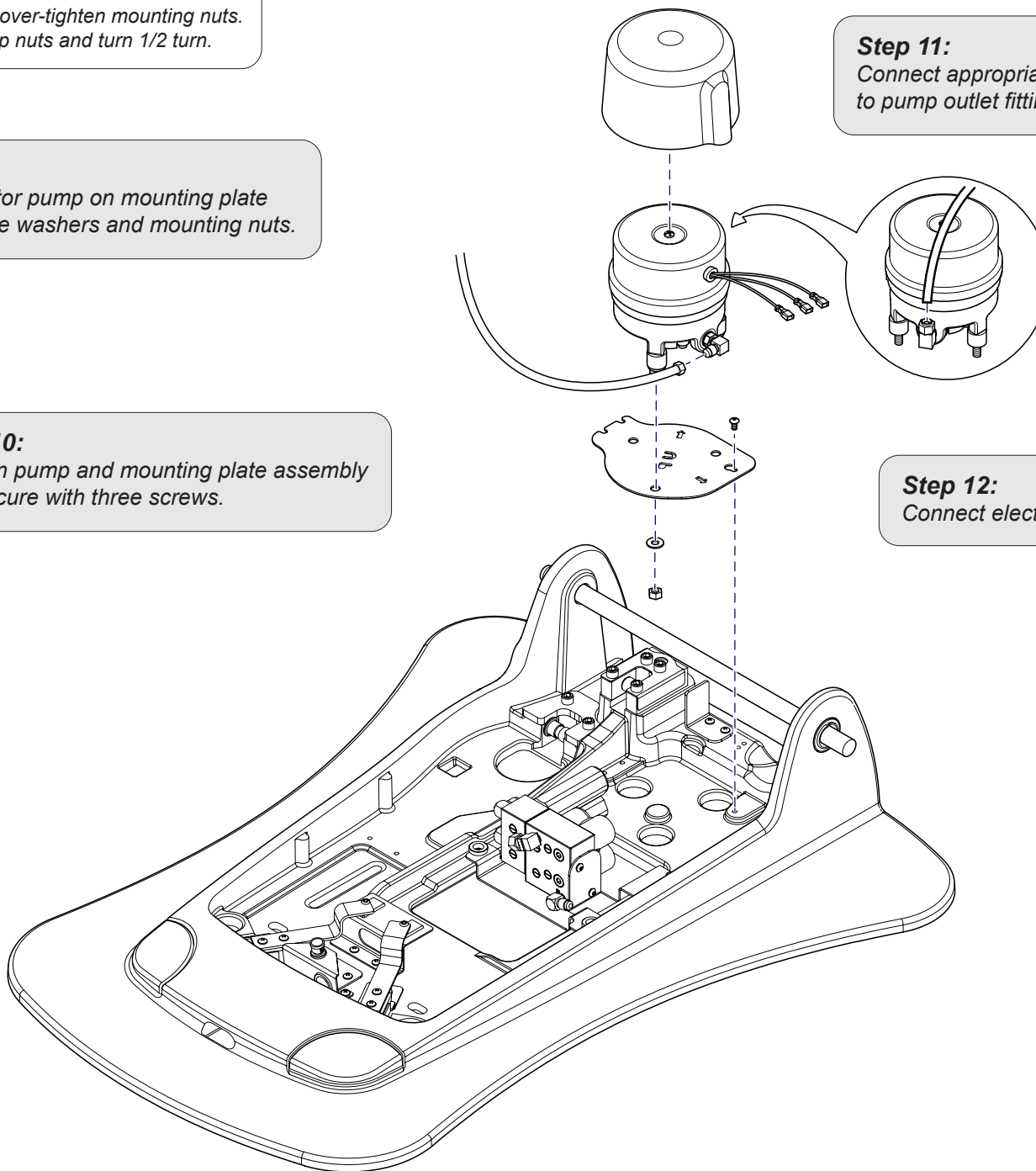
Position pump and mounting plate assembly
and secure with three screws.

Step 11:

Connect appropriate hydraulic lines
to pump outlet fitting and inlet fitting.

Step 12:

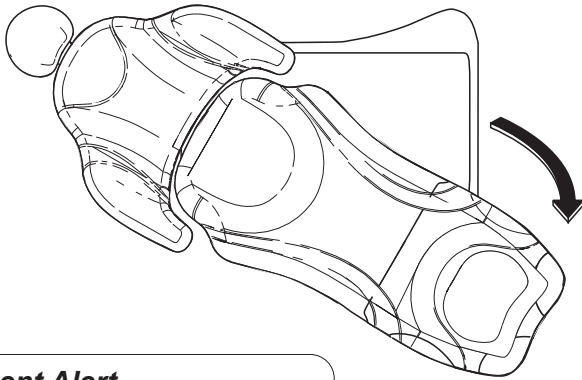
Connect electrical leads.



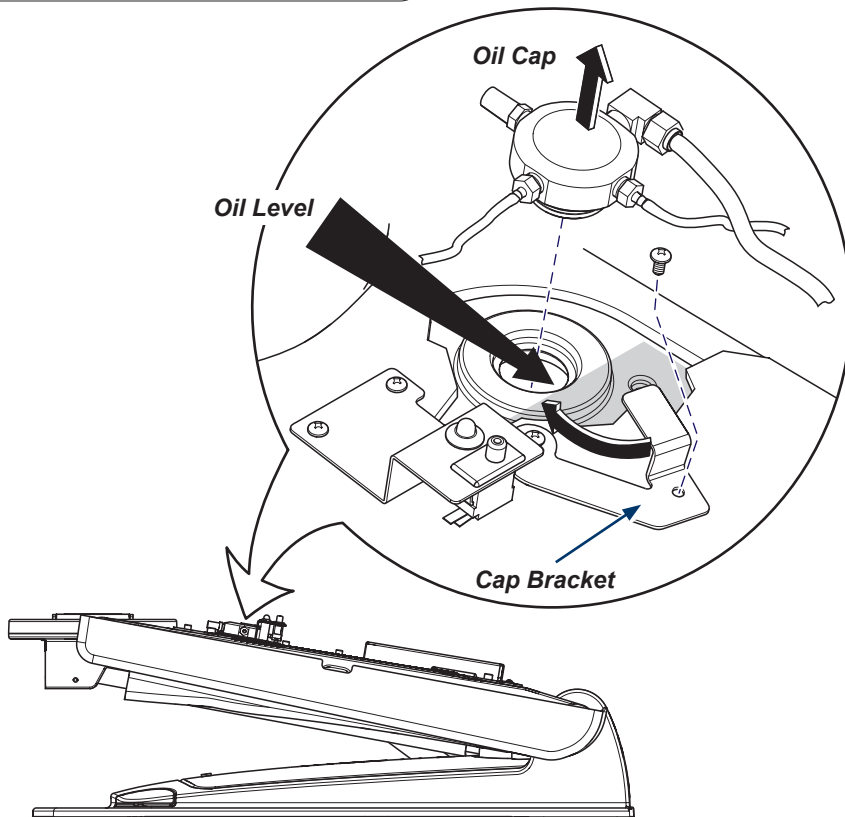
MAF12239I

**WARNING**

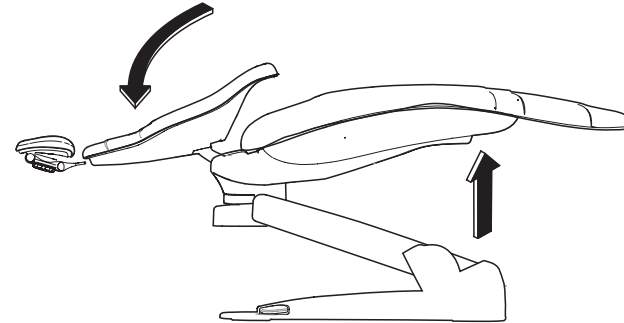
Use caution to prevent electrical shock with chair plugged into outlet.
Electrical components and connections are exposed.

**Equipment Alert**

Factory fill volume: 1.3 - 1.4 U.S. quarts
(1.2 - 1.3 liters).

**Step 13: Position chair.**

- A) Rotate chair to the right for more room to work.
- B) Raise chair to the home position.
- C) Lower back until level with seat.
- D) Disconnect chair from power supply.

**Step 14: Check Oil Level.**

- A) Remove screw in cap bracket and rotate bracket.
- B) Pull up on oil cap to remove from reservoir.
- C) Oil should be level with the base of the oil cap opening.
- D) Add only Hydraulic Oil with Viscosity ISOVG 32. if oil level is low.

Step 15: Install oil cap and cap bracket.

- A) Push oil cap into tank opening.
- B) Place bracket over screw, rotate bracket to fit over oil cap and screw into tank.

Step 16:

- A) Plug chair into outlet.
- B) Verify operation using control buttons.
- C) Check for hydraulic leakage.
- D) Unplug chair and install covers.
- E) Perform final operational test.