

M9® and M11® Back Cover Without Fans Kit

002-10857-00 M9
002-10856-00 M11

Applies to Models:

M9 (-050/-053)

M11 (-050/-051/-053)

Special Tools:

T25 Torx Screw Driver



WARNING

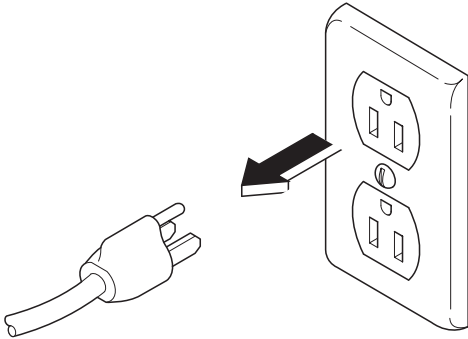
To prevent risk of shock always disconnect power before removing covers or performing any service procedure.



WARNING

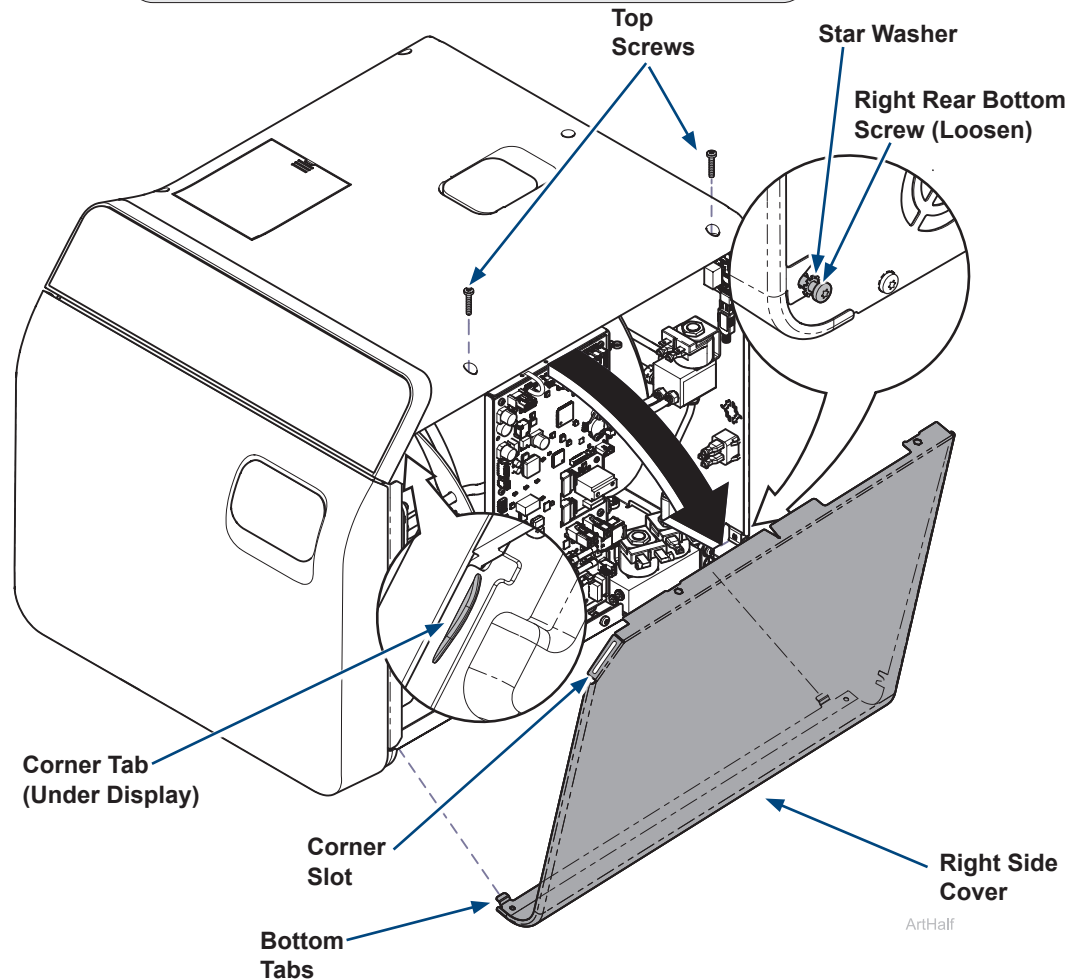
Allow to cool to ambient / room temperature prior to removing cover. Release pressure by pulling ring of pressure relief valve if necessary.

Step 1: Disconnect power.



Step 2: Remove right side cover.

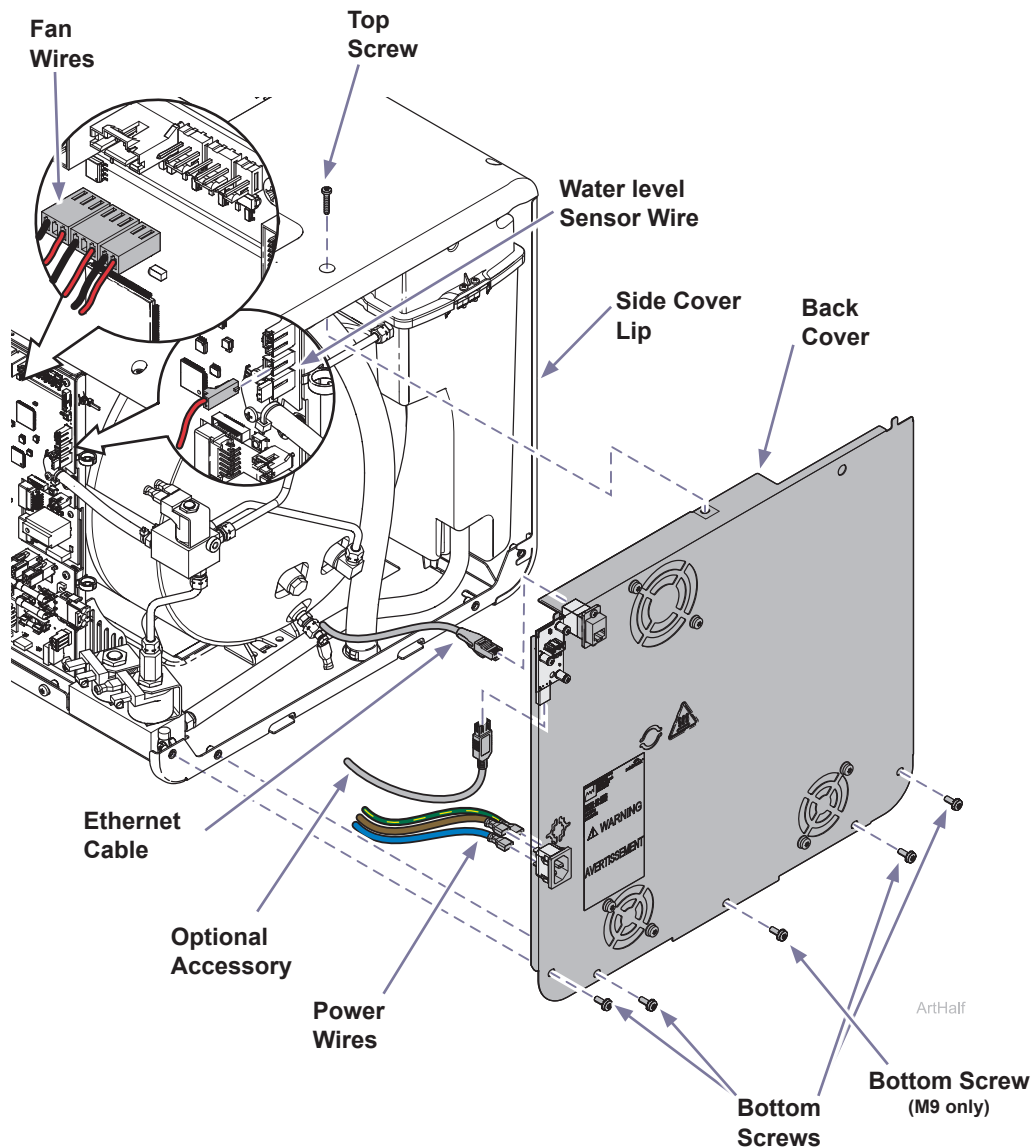
- Remove top two right side screws and loosen right rear bottom screw.
- Pull corner tab out of corner slot and rotate top of side cover down to free bottom tabs from base of sterilizer.



Step 3: Remove back cover.

- A) Disconnect power wires, fan wires, water level sensor wire, ethernet cable and any optional accessories needed to remove back cover.
- B) Remove top back screw, back bottom screws and star washers.
- C) Remove back cover by pulling outward on top of back cover and sliding it away from side cover lip.

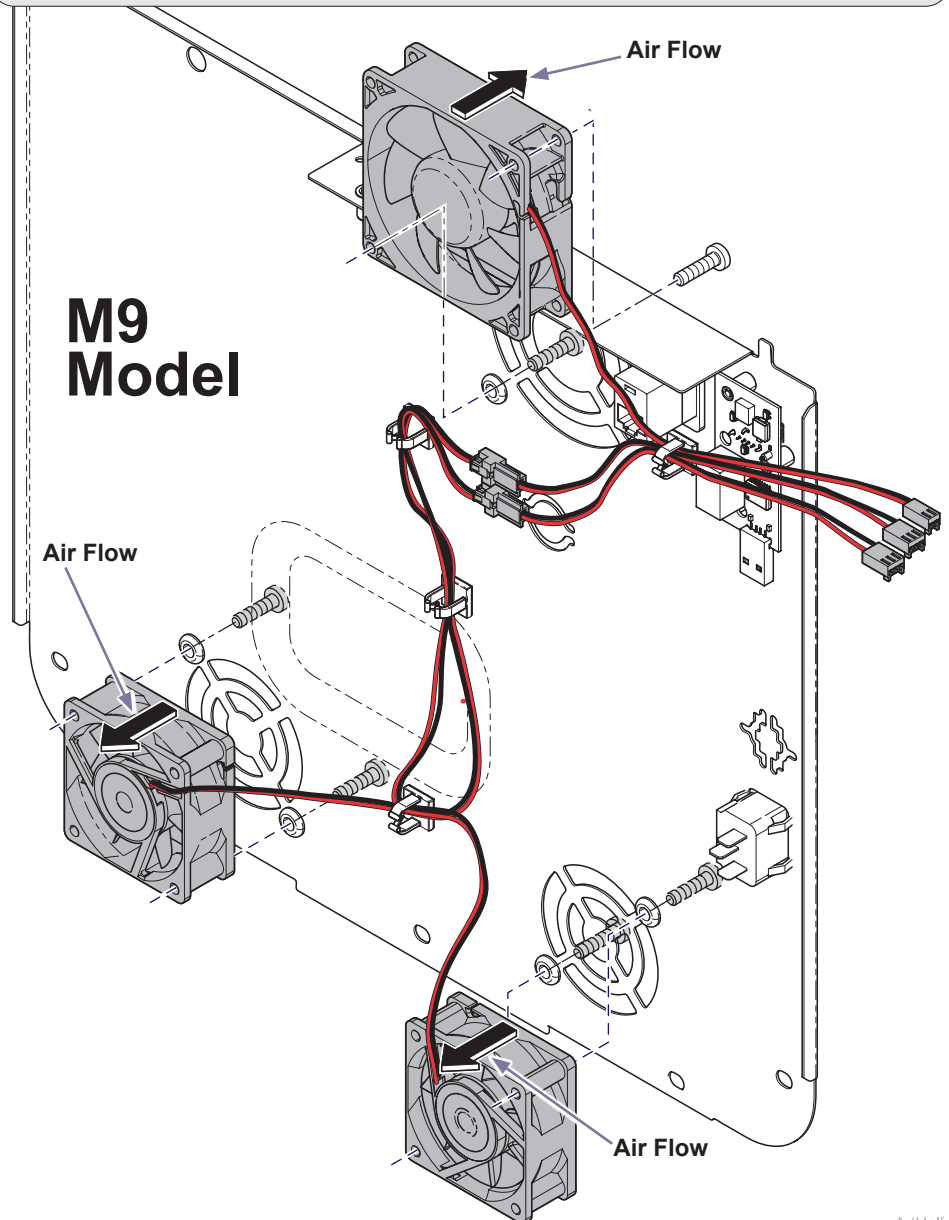
Note: Your sterilizer may be equipped with additional accessories that need disconnected to remove back cover.



Step 4A: (M9) Remove fans and install on new back cover.

- A) Remove two screws securing each fan and remove wiring from cable holders.
- B) Install two screws securing each fan to new back cover and route wiring in cable holders.

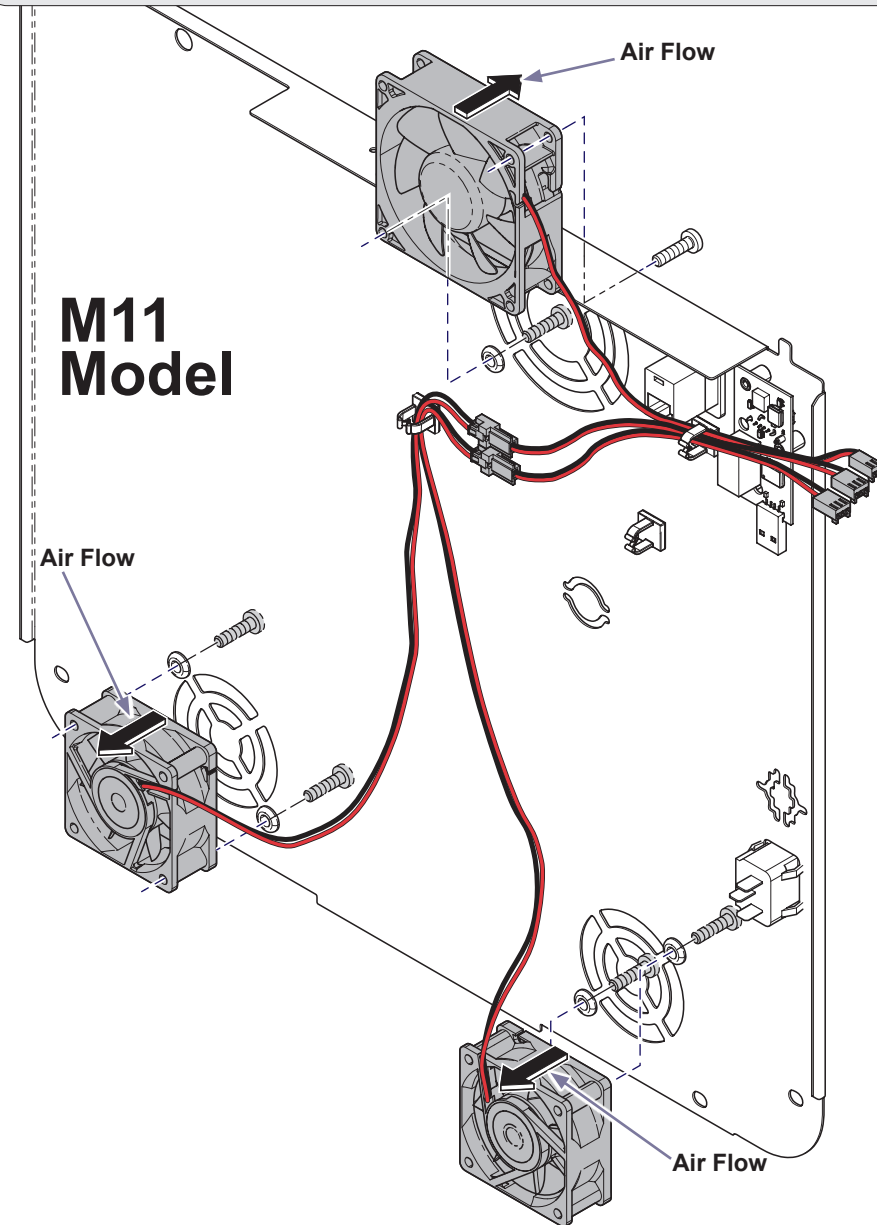
Note: Make sure air flow arrows are pointed in the correct direction.



Step 4B : (M11) Remove fans and install on new back cover.

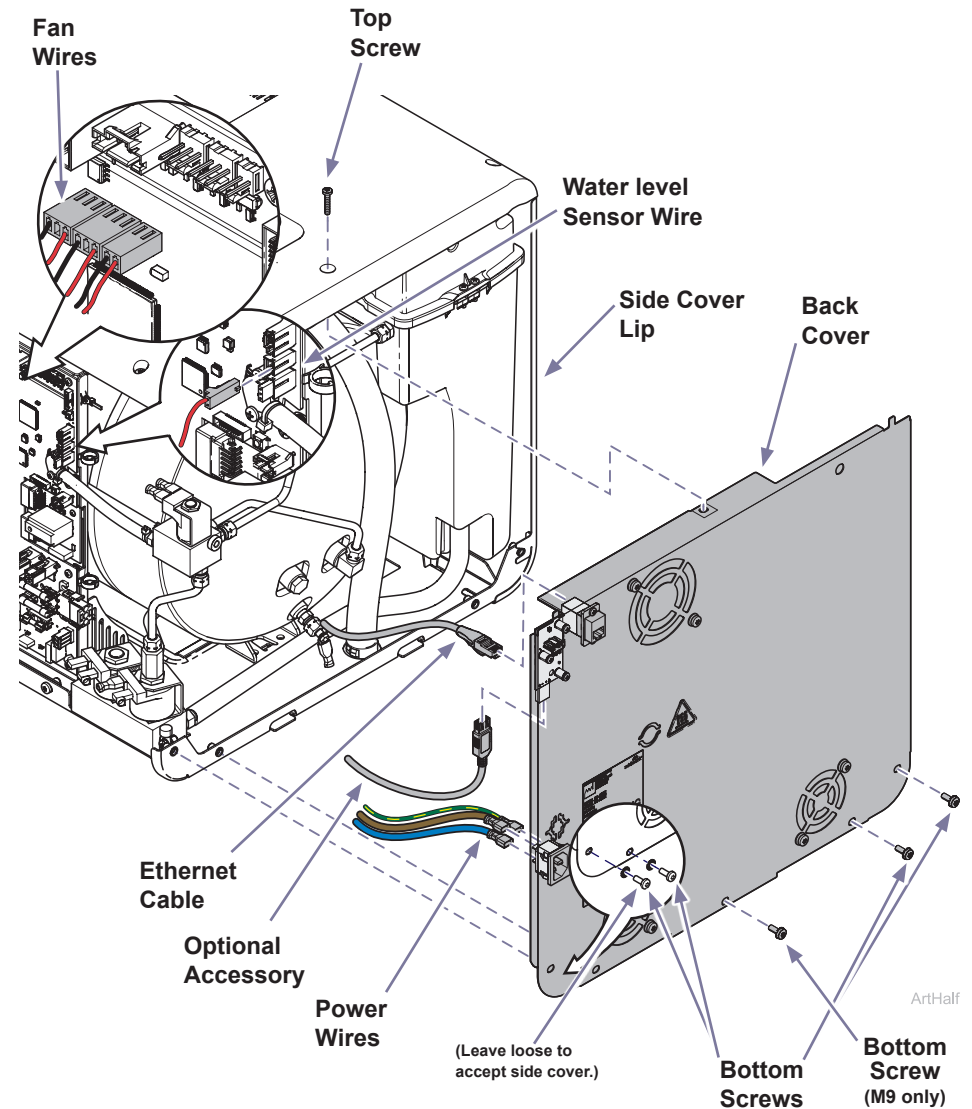
- Remove two screws securing each fan and remove wiring from cable holders.
- Install two screws securing each fan to new back cover and route wiring in cable holders.

Note: Make sure air flow arrows are pointed in the correct direction.



Step 5: Install back cover.

- Reinstall back cover by inserting bottom corner into side cover lip. Lift up top cover to position back cover underneath then slide back cover to the right behind rest of side cover lip.
- Secure back cover with top screw and back bottom screws and star washers. Leave left most corner bottom screw loose to accept side cover.
- Connect power wires, fan wires, water level sensor wire, ethernet cable and any optional accessories disconnected in previous steps.



Step 9: Install right side cover.

- A) Insert bottom tabs of right side cover into base of sterilizer.
- B) Rotate top of side cover up into position and snap corner tab into corner slot.
- C) Install top two right side screws and tighten right rear bottom screw.
- D) Run a test cycle and check for leaks.



WARNING

For effective grounding make sure star washer is located between screw head and tab of side cover when tightening right rear bottom screw.

