

M9® and M11® Top Cover Kit

002-10859-00 M9
002-10858-00 M11

Applies to Models:
M9 (-050/-053)
M11 (-050/-051/-053)
Special Tools:
T25 Torx Screw Driver



WARNING

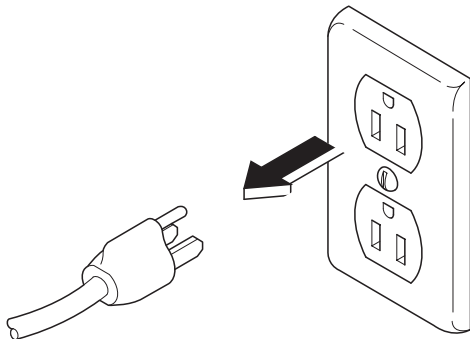
To prevent risk of shock always disconnect power before removing covers or performing any service procedure.



WARNING

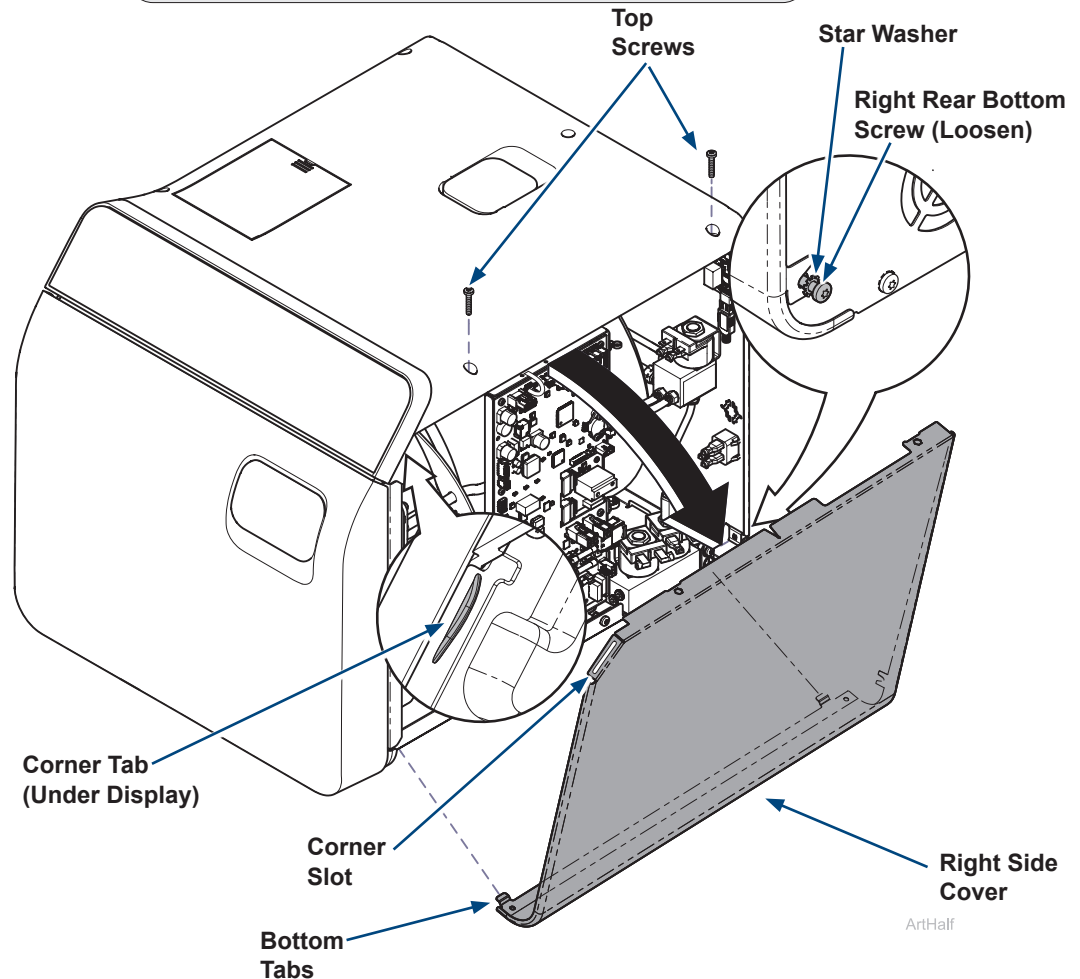
Allow to cool to ambient / room temperature prior to removing cover. Release pressure by pulling ring of pressure relief valve if necessary.

Step 1: Disconnect power.



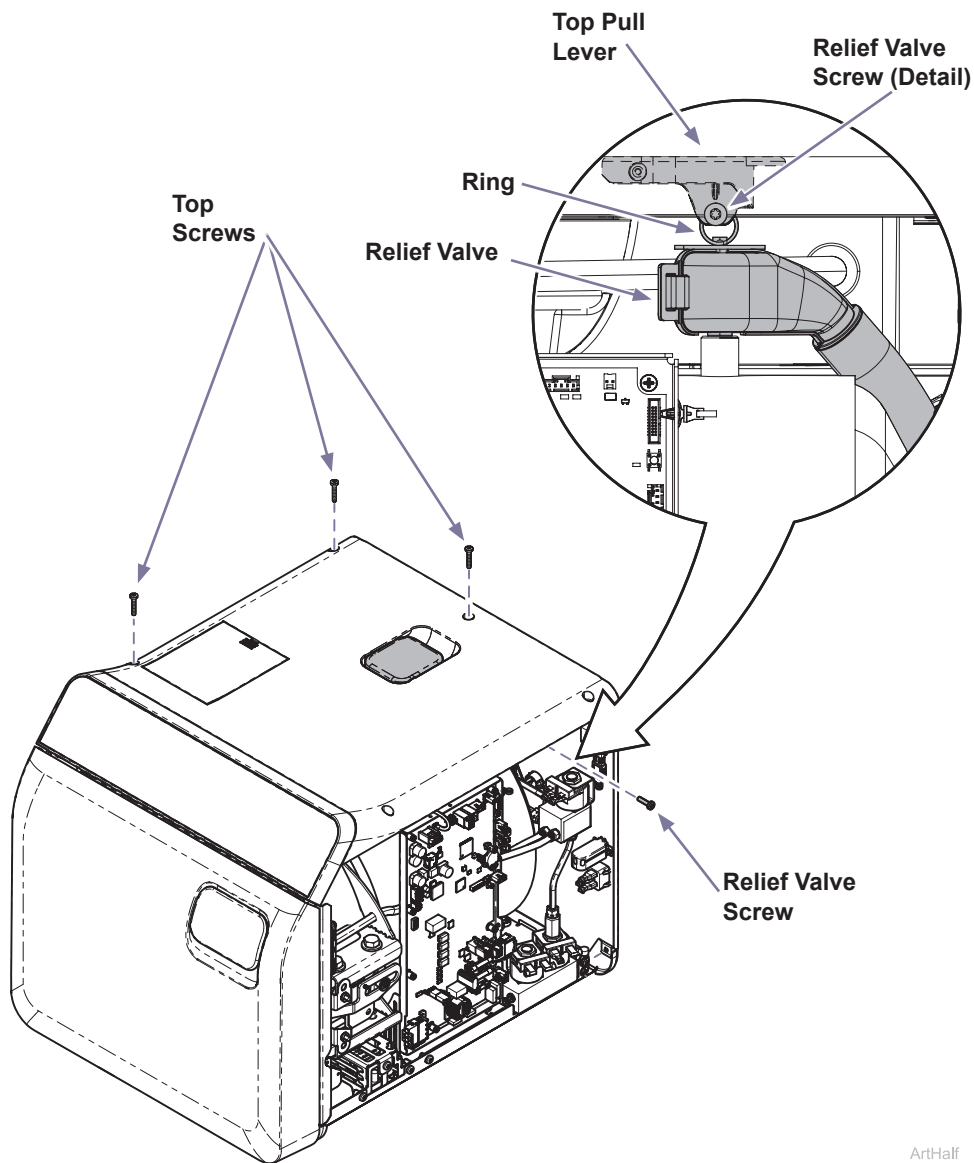
Step 2: Remove right side cover.

- Remove top two right side screws and loosen right rear bottom screw.
- Pull corner tab out of corner slot and rotate top of side cover down to free bottom tabs from base of sterilizer.



Step 3: Remove top cover hardware.

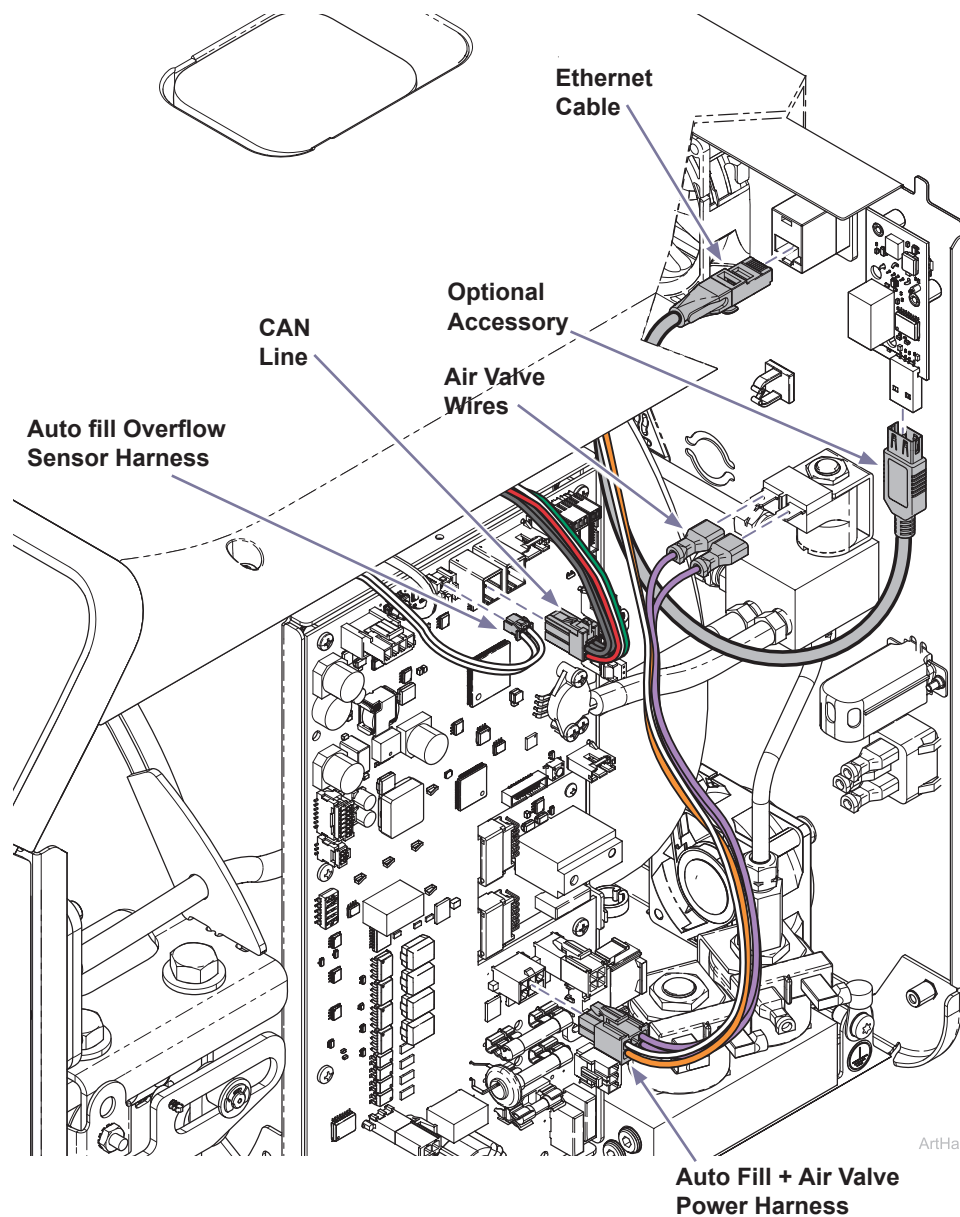
- A) Remove remaining three top screws.
- B) Remove screw attaching ring of pressure relief valve to top pull lever.



ArtHalf

Step 4: Disconnect wiring to top cover.

- A) Disconnect CAN line, auto fill overflow sensor harness and auto fill + air valve power harness from the PC board.
- B) Disconnect air valve wires, ethernet cable and any optional accessories needed to remove top cover.

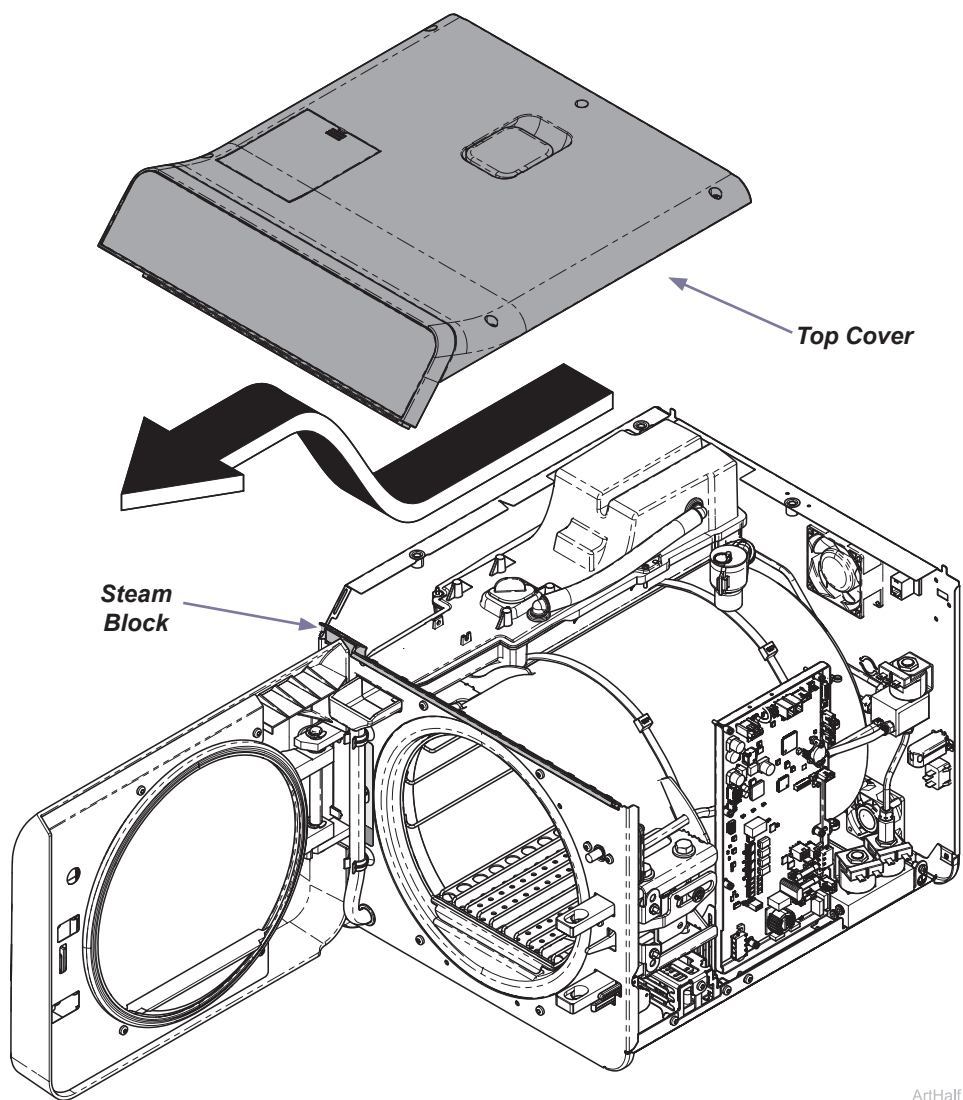


ArtHalf

Step 5: Remove top cover.

- A) Open door.
- B) Lift top cover forward and up to remove.

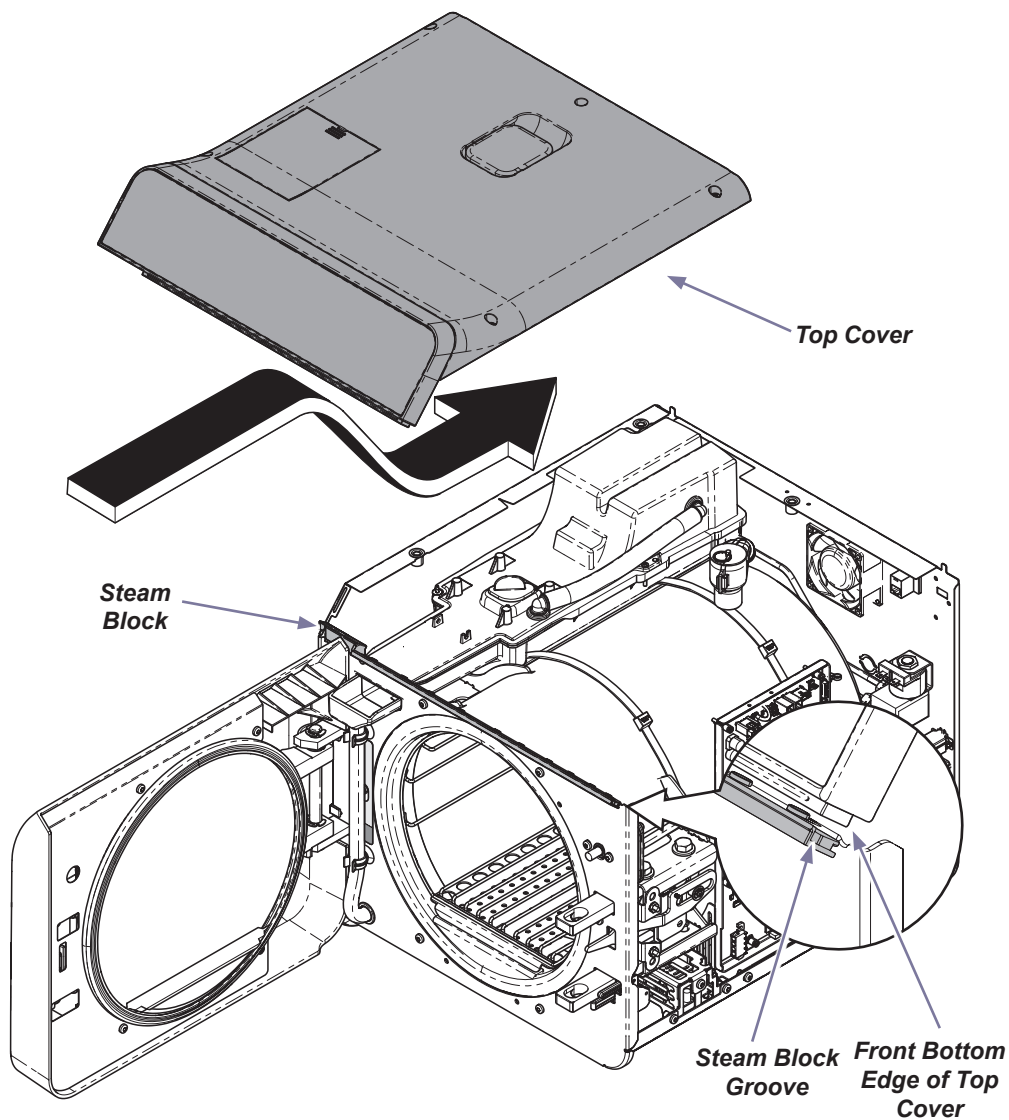
Note: The front edge of top cover will come out of groove in the steam block.



Step 6: Install top cover.

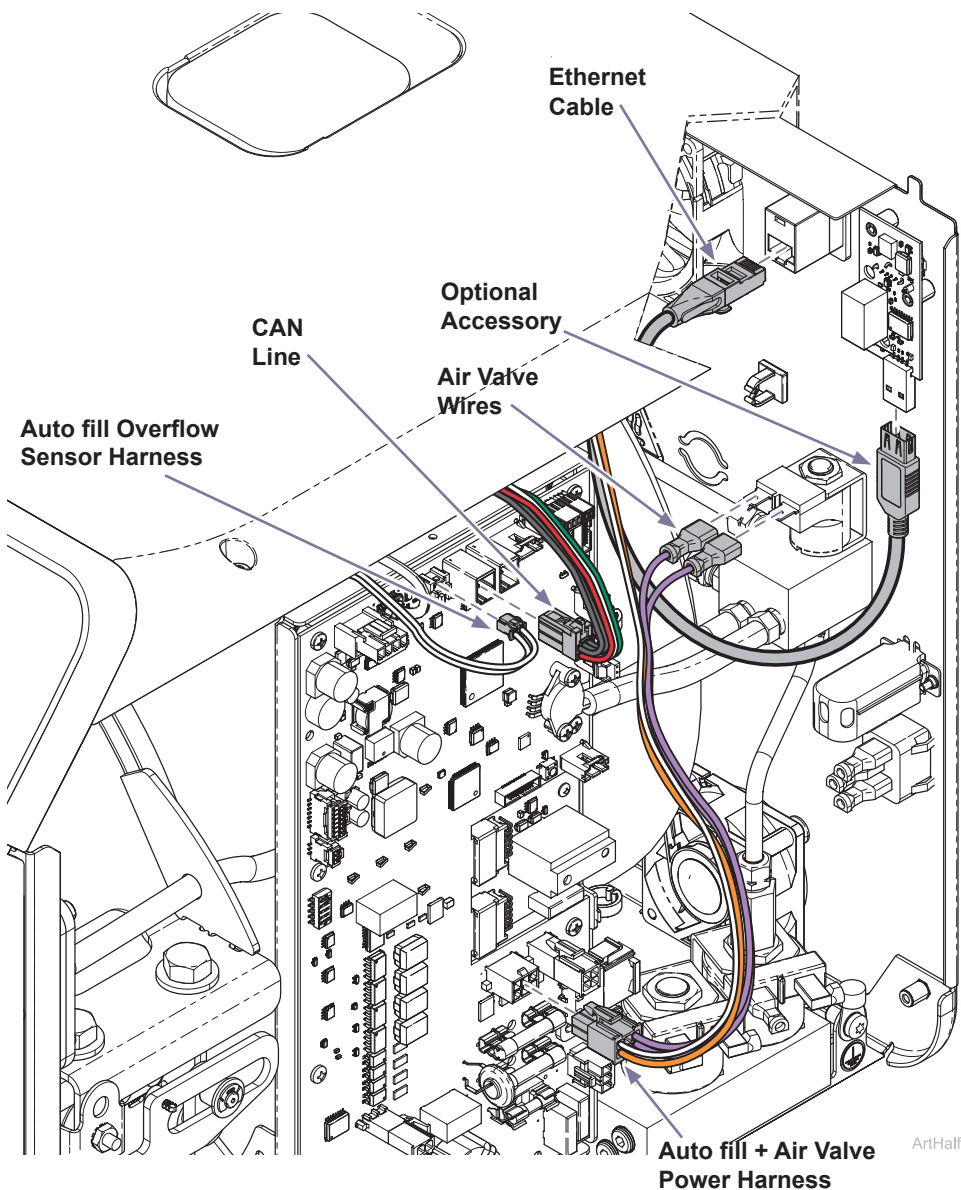
- A) Open door.
- B) Tuck front bottom edge of top cover into groove of steam block. Then set top cover down in position.

Note: The front edge of top cover fits down in the groove of steam block.



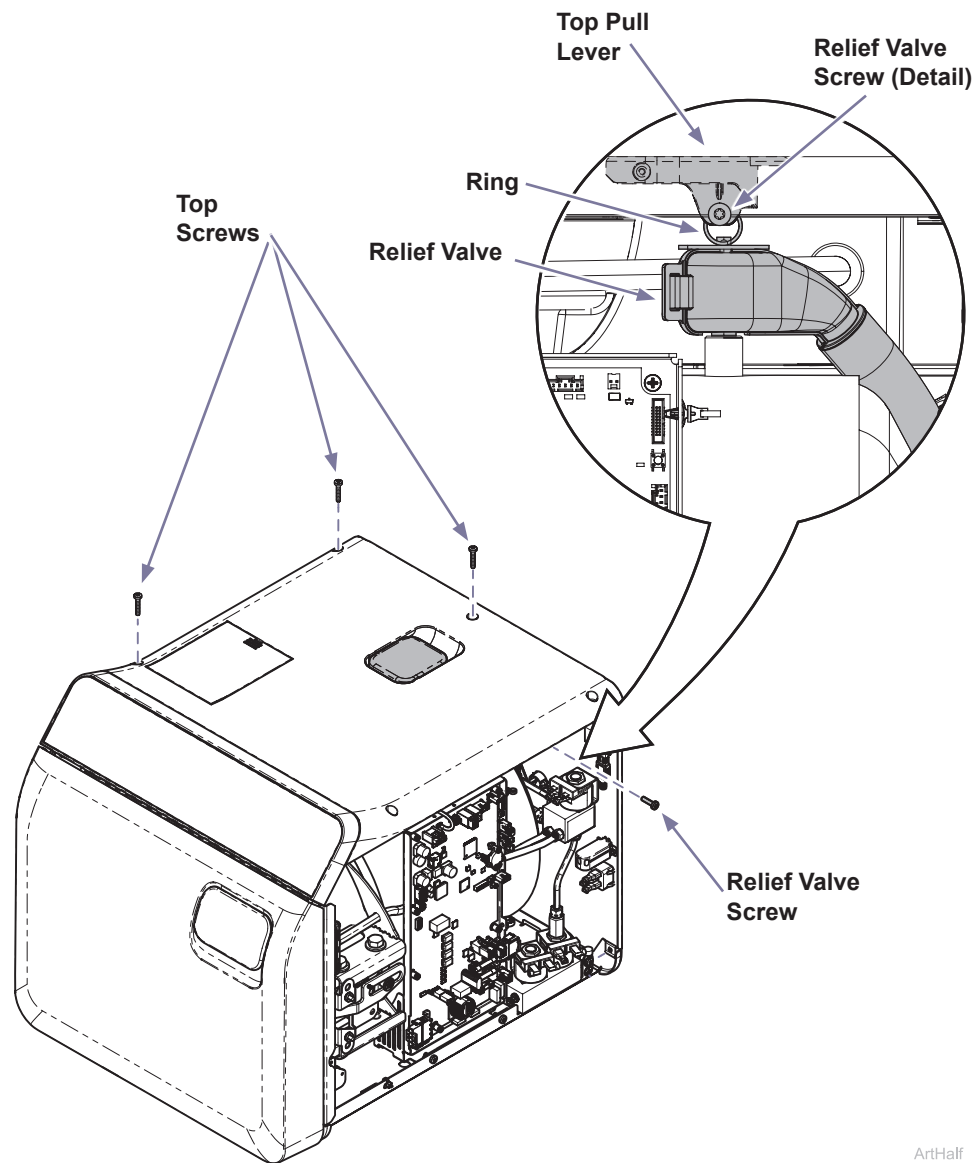
Step 7: Connect wiring to top cover.

- A) Connect CAN line, auto fill overflow sensor harness and auto fill + air valve power harness from the PC board.
- B) Connect air valve wires, ethernet cable and any optional accessories that were disconnected to remove top cover.



Step 8: Install top cover hardware.

- A) Hold ring of pressure relief valve in center of top pull lever. Then install screw attaching ring of pressure relief valve to top pull lever.
- B) Install three top screws shown.



Step 9: Install right side cover.

- A) Insert bottom tabs of right side cover into base of sterilizer.
- B) Rotate top of side cover up into position and snap corner tab into corner slot.
- C) Install top two right side screws and tighten right rear bottom screw.
- D) Run a test cycle and check for proper operation.



WARNING

For effective grounding make sure star washer is located between screw head and tab of side cover when tightening right rear bottom screw.

