

M9® and M11® Complete Door Latch Kit

002-10860-00 M9

002-10861-00 M11

Applies to Models:

M9 (-050/-053)

M11 (-050/-051/-053)

Special Tools:

T25 Torx Screw Driver



WARNING

To prevent risk of shock always disconnect power before removing covers or performing any service procedure.



Equipment Alert

Door pins will be reused do not discard.

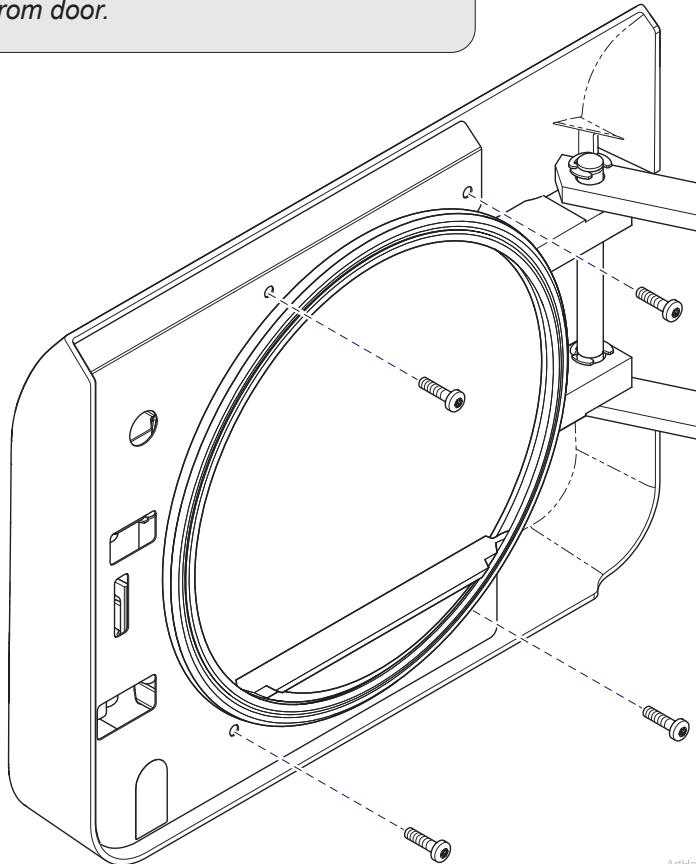


WARNING

Allow to cool to ambient / room temperature prior to removing cover. Release pressure by pulling ring of pressure relief valve if necessary.

Step 1: Remove door screws.

A) Remove four screws to release covers from door.



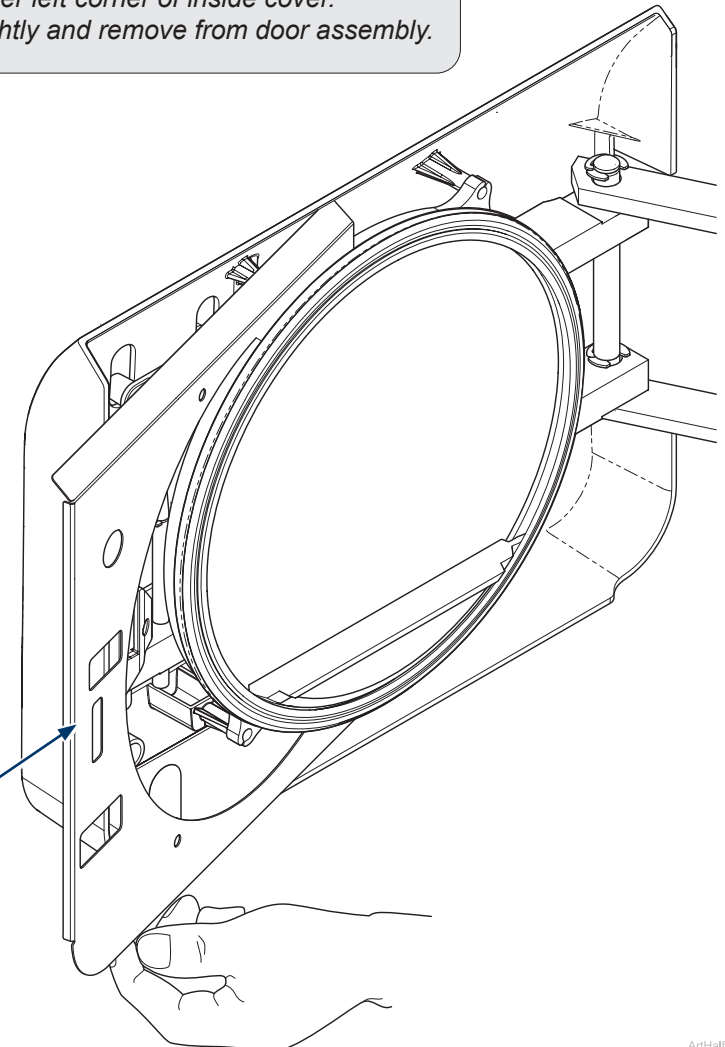
ArtHalf

Step 2: Remove inside door cover.

A) Pull out on lower left corner of inside cover.

B) Flex cover slightly and remove from door assembly.

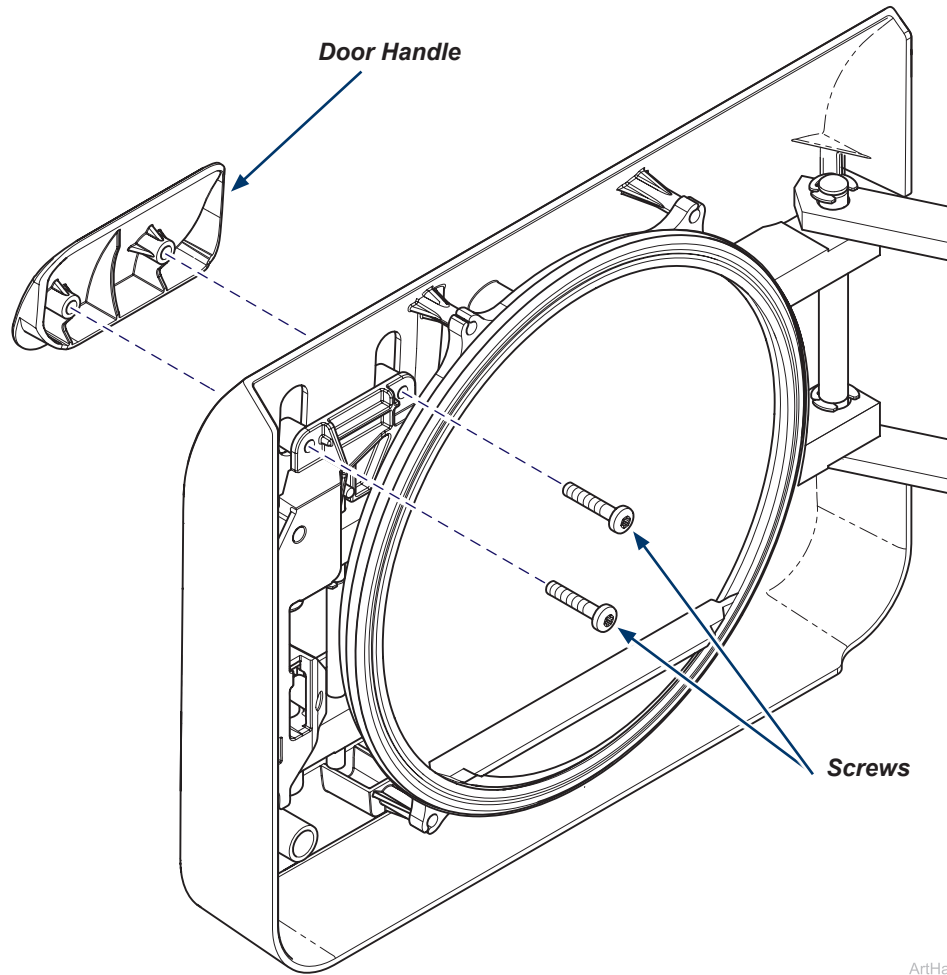
Inside
Door Cover



ArtHalf

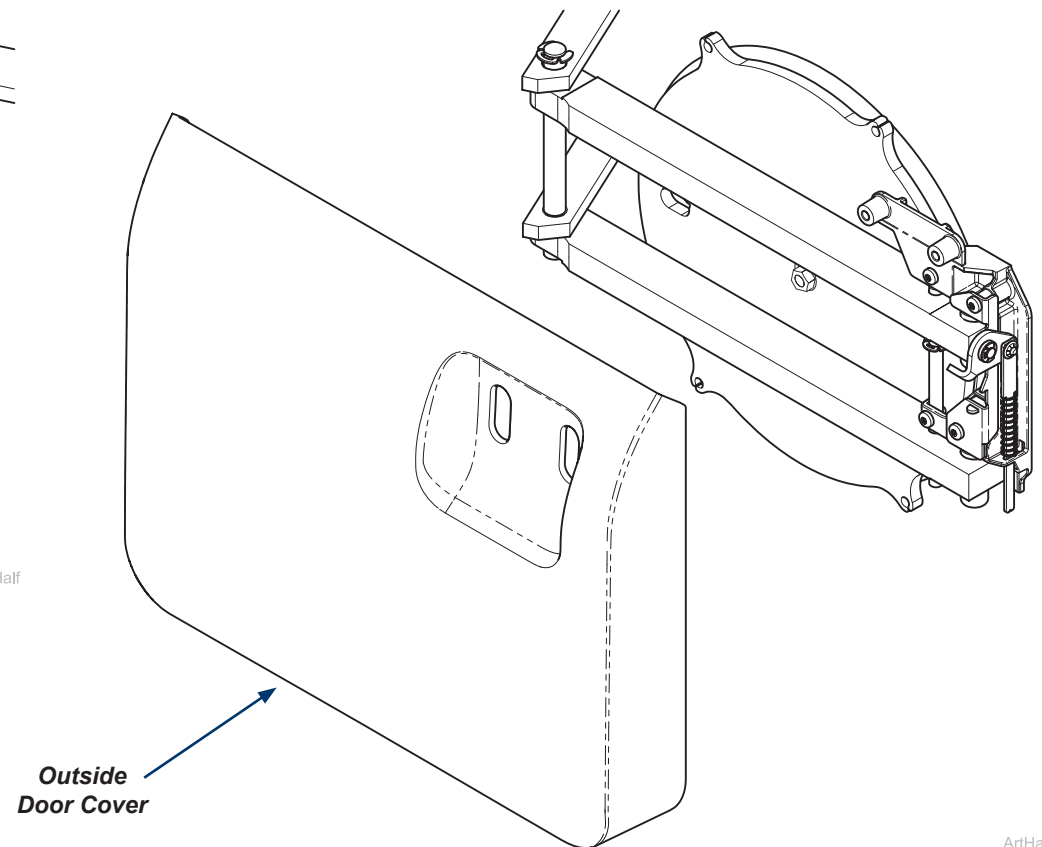
Step 3: Remove door handle.

- A) Remove two mounting screws.
- B) Remove door handle.



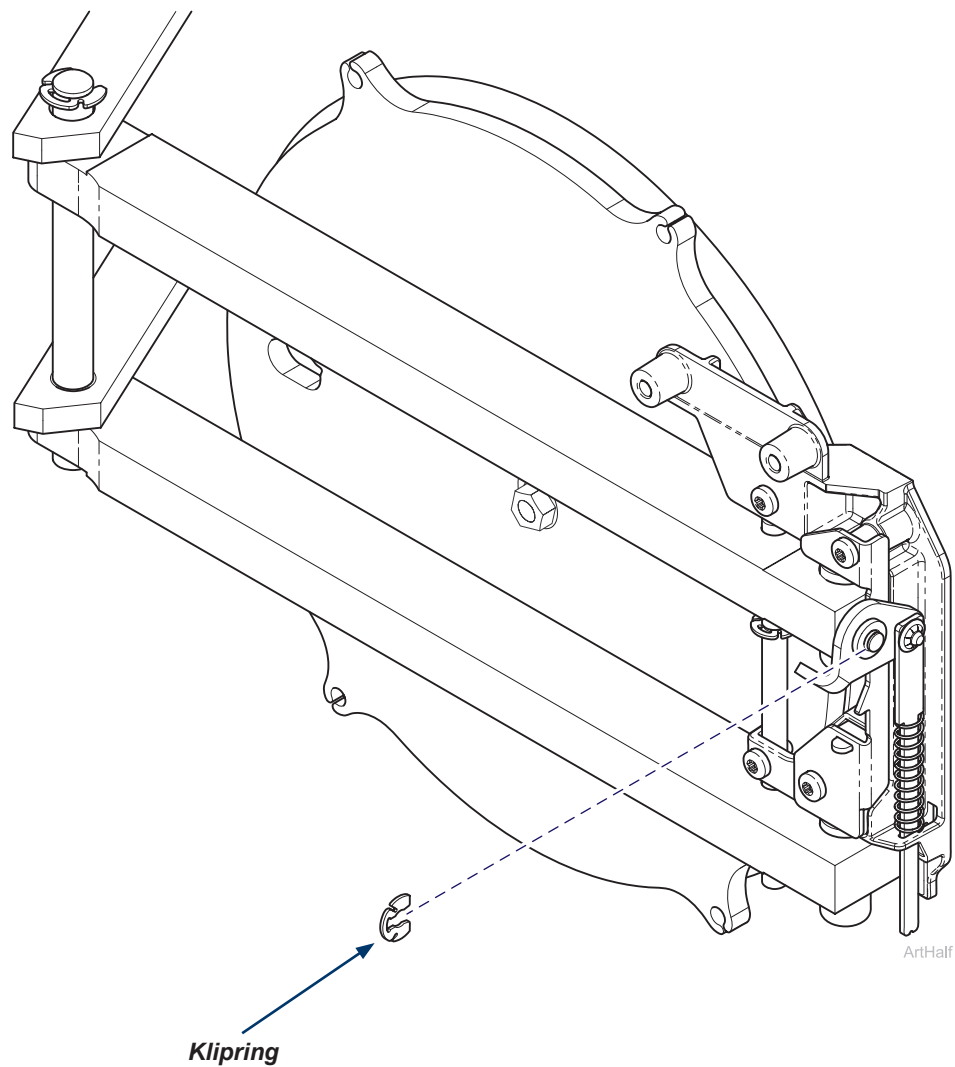
ArtHalf

Step 4: Remove outside door cover.



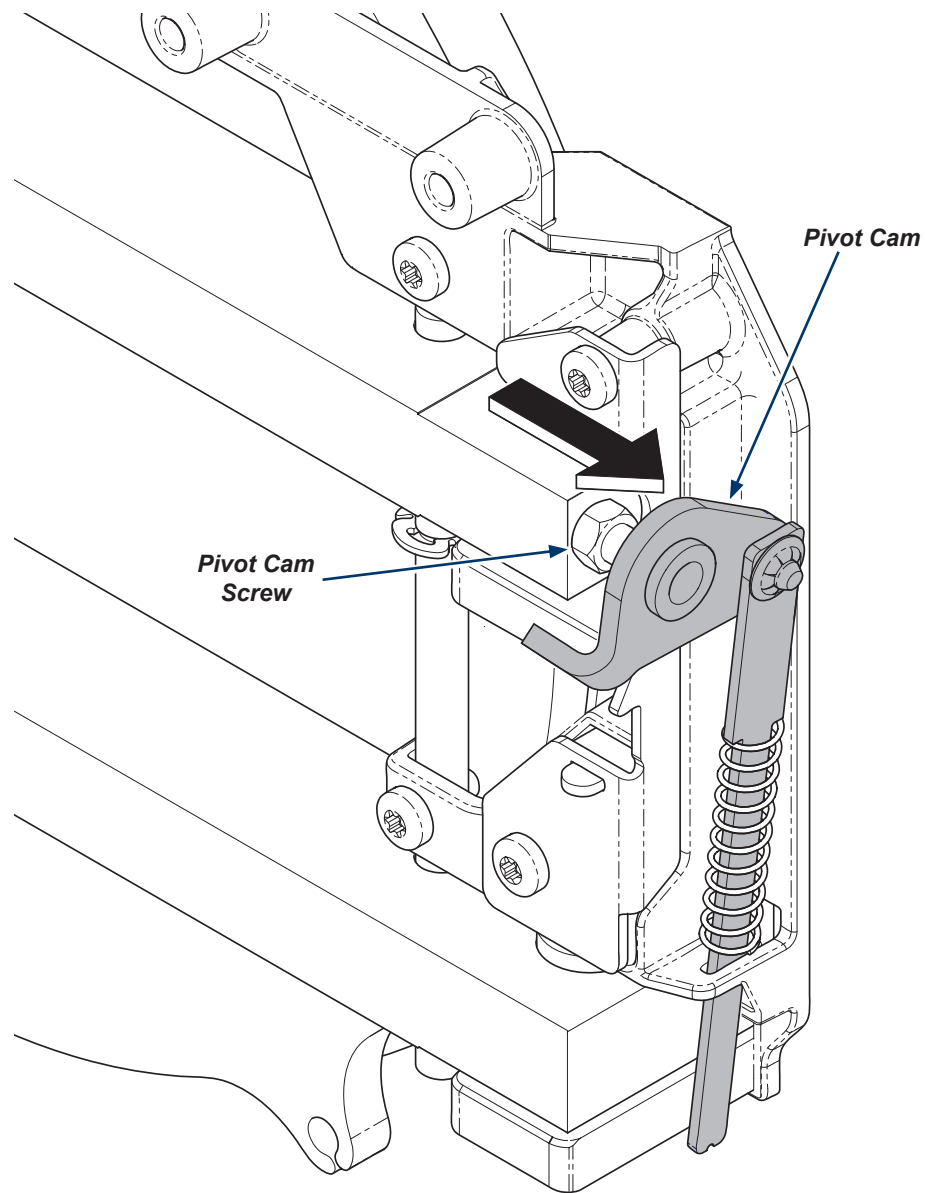
ArtHalf

Step 5: Remove klipring.



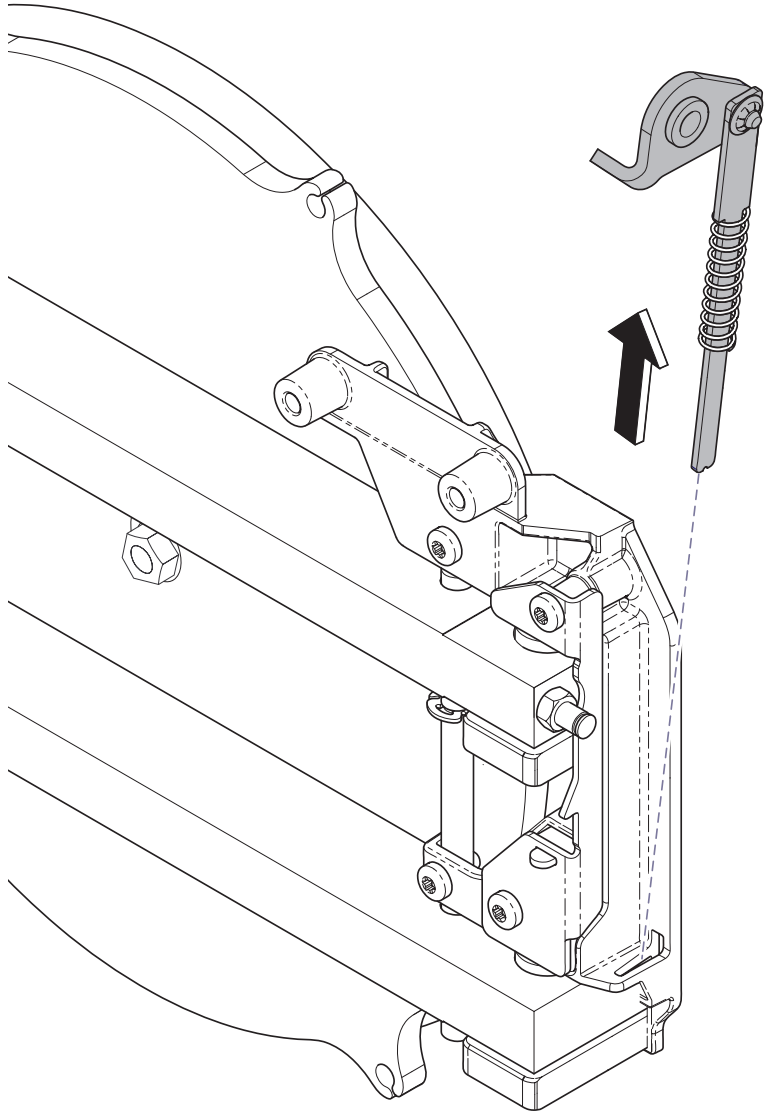
Step 6: Remove pivot cam from pivot cam screw.

A) Slide pivot cam from pivot cam screw.



Step 7: Remove pivot cam / spring plunger assembly.

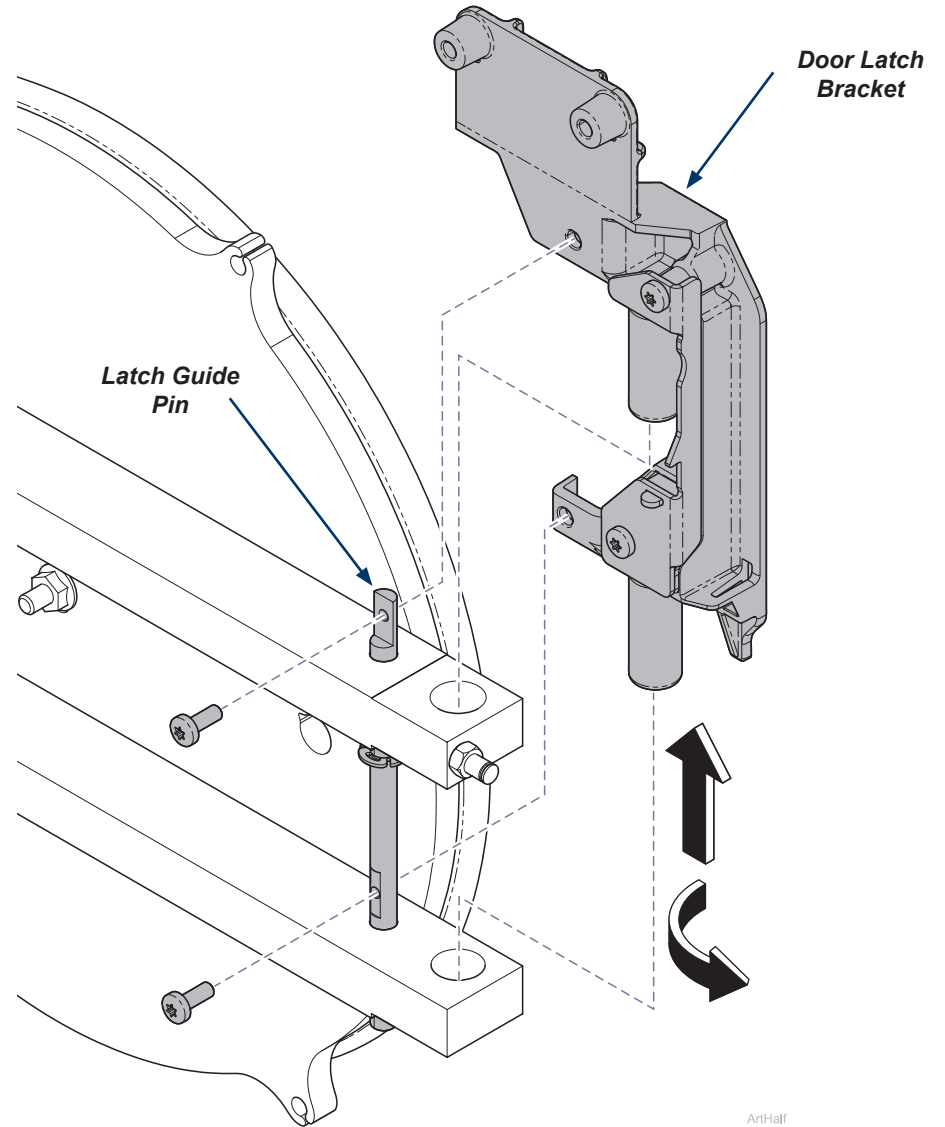
- A) Remove pivot cam / spring plunger assembly from latch bracket insert.



ArtHalf

Step 8: Remove door latch bracket.

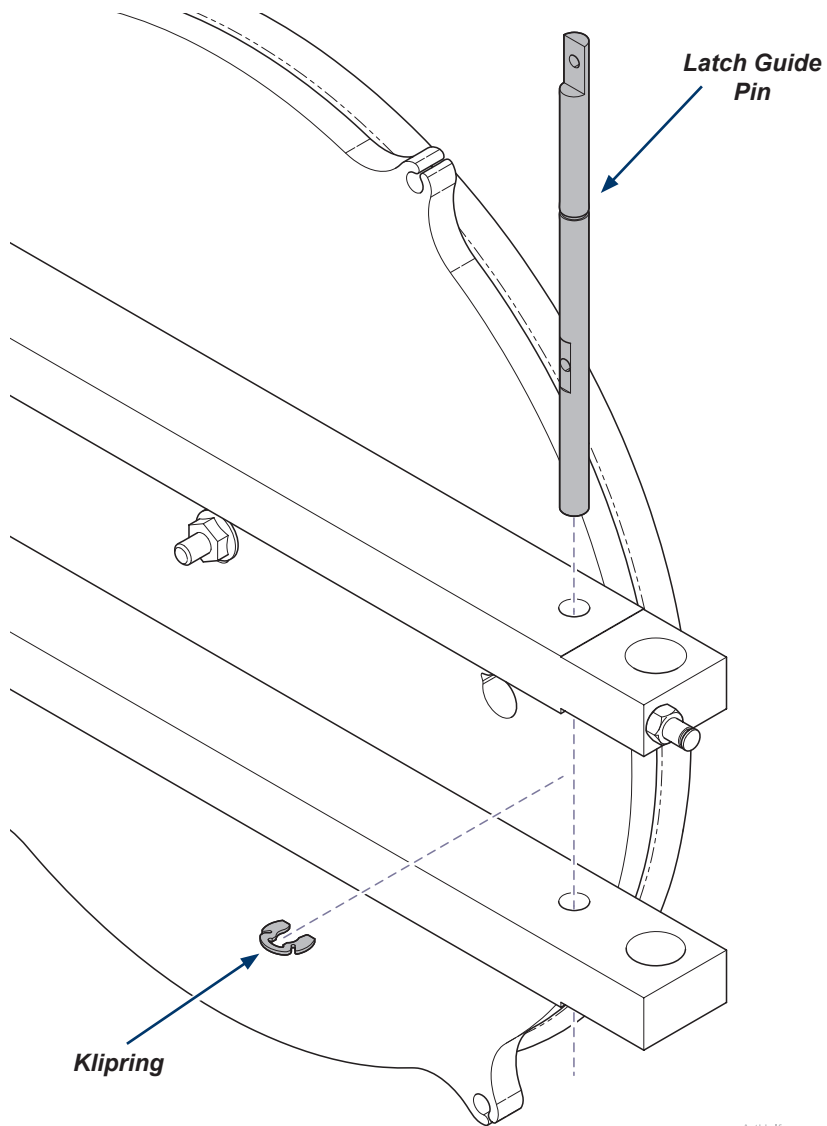
- A) Remove two screws holding latch guide pin to door latch bracket.
B) With door open pull up and rotate door latch bracket counter clockwise enough to remove it from door.



ArtHalf

Step 9: Remove + replace latch guide pin.

- A) Remove klipring holding latch guide pin.
- B) Replace with new latch guide pin and secure with klipring.



ArtHalf

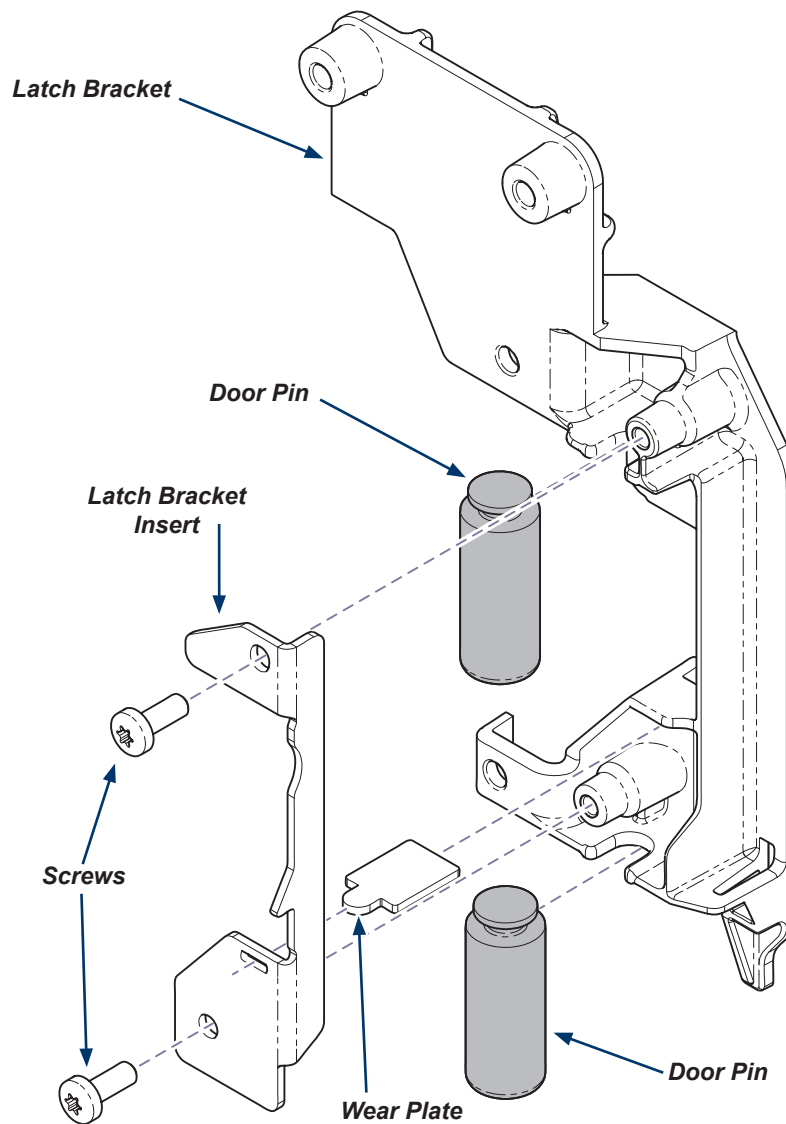
Step 10: Remove door pins from old door latch assembly.

- A) Remove screws from latch bracket insert.
- B) Remove latch bracket insert and wear plate from latch bracket.
- C) Slide door pins out of latch bracket and keep them to install into new door latch assembly.



Equipment Alert

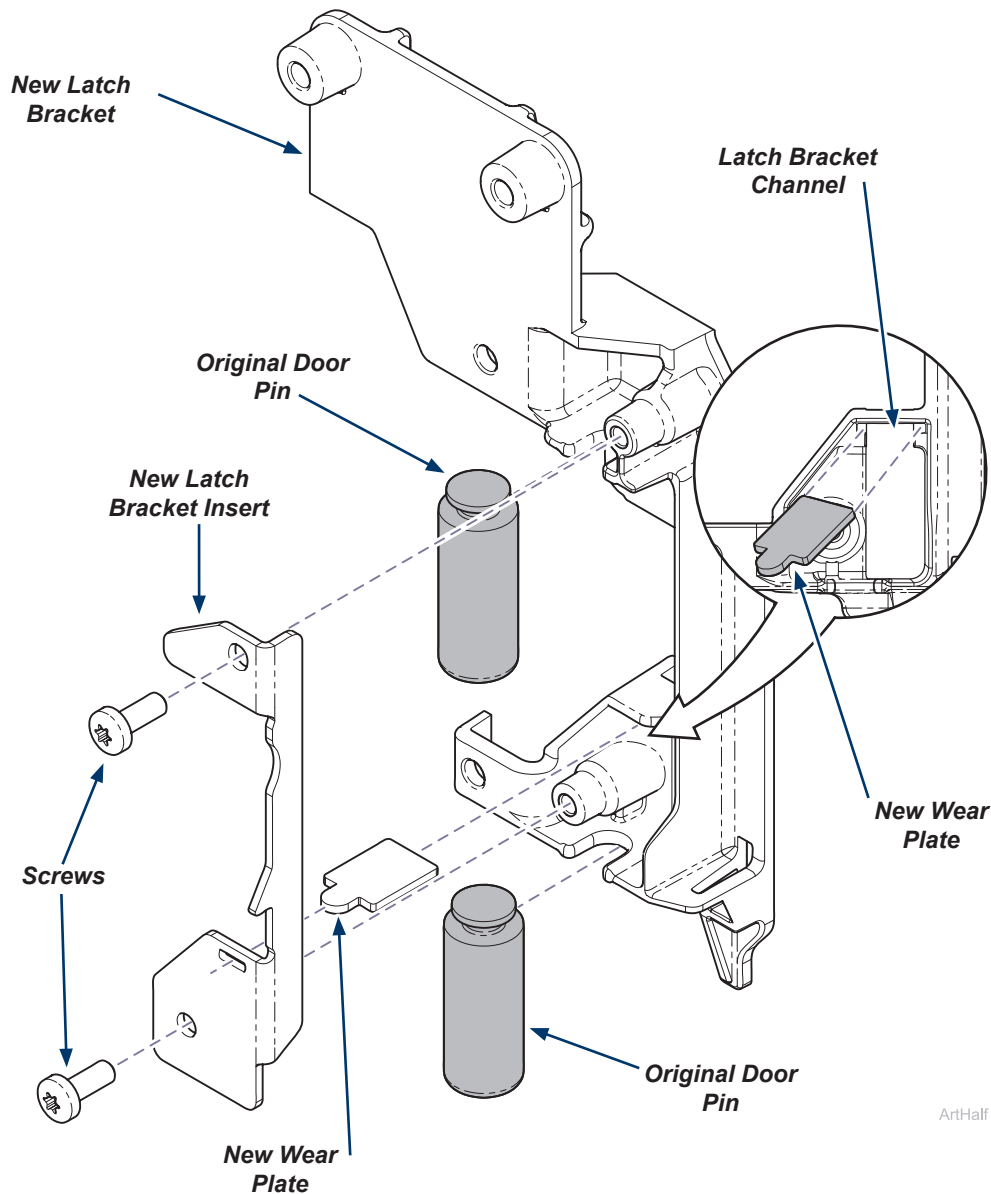
Door pins will be reused do not discard.



ArtHalf

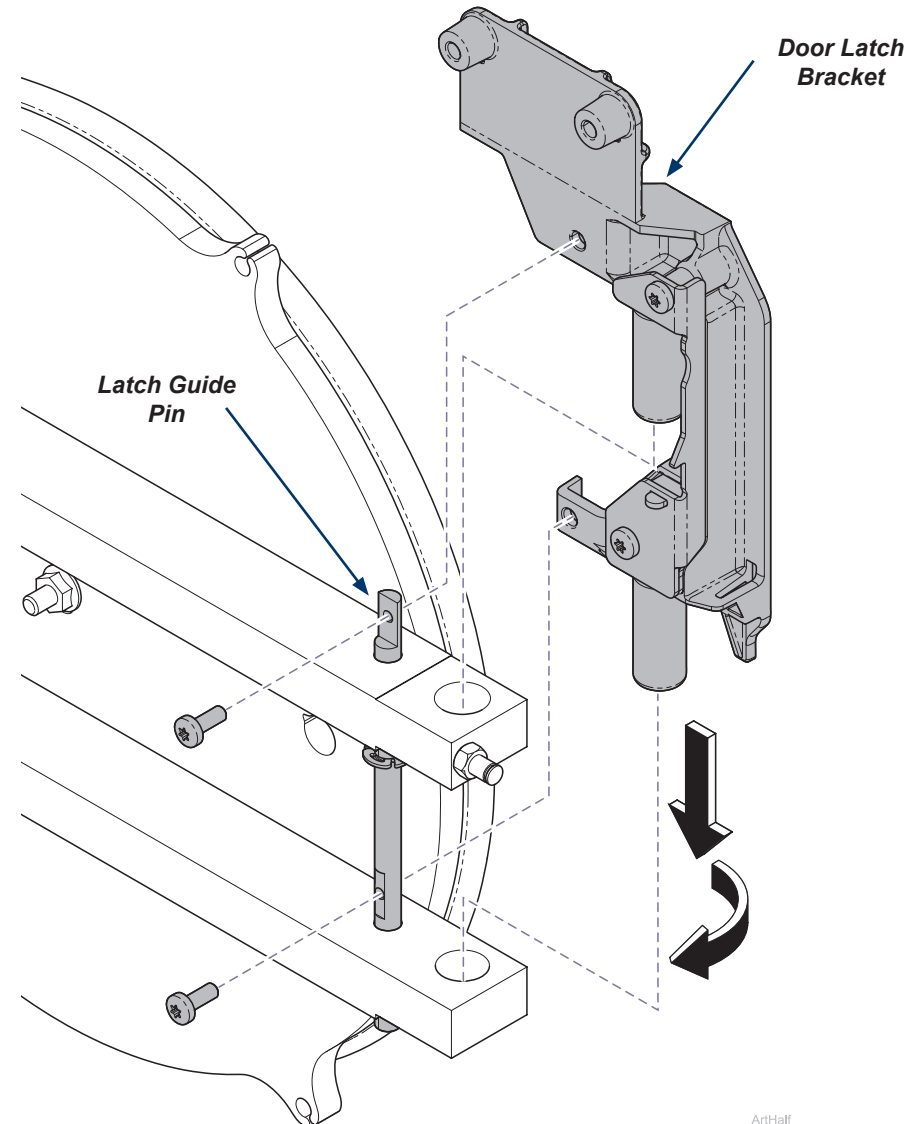
Step 11: Insert door pins into new latch bracket and re-assemble.

- A) Slide original door pins onto new latch bracket.
- B) Position new wear plate into latch bracket channel.
- C) Align new latch bracket insert onto latch bracket and secure with screws.



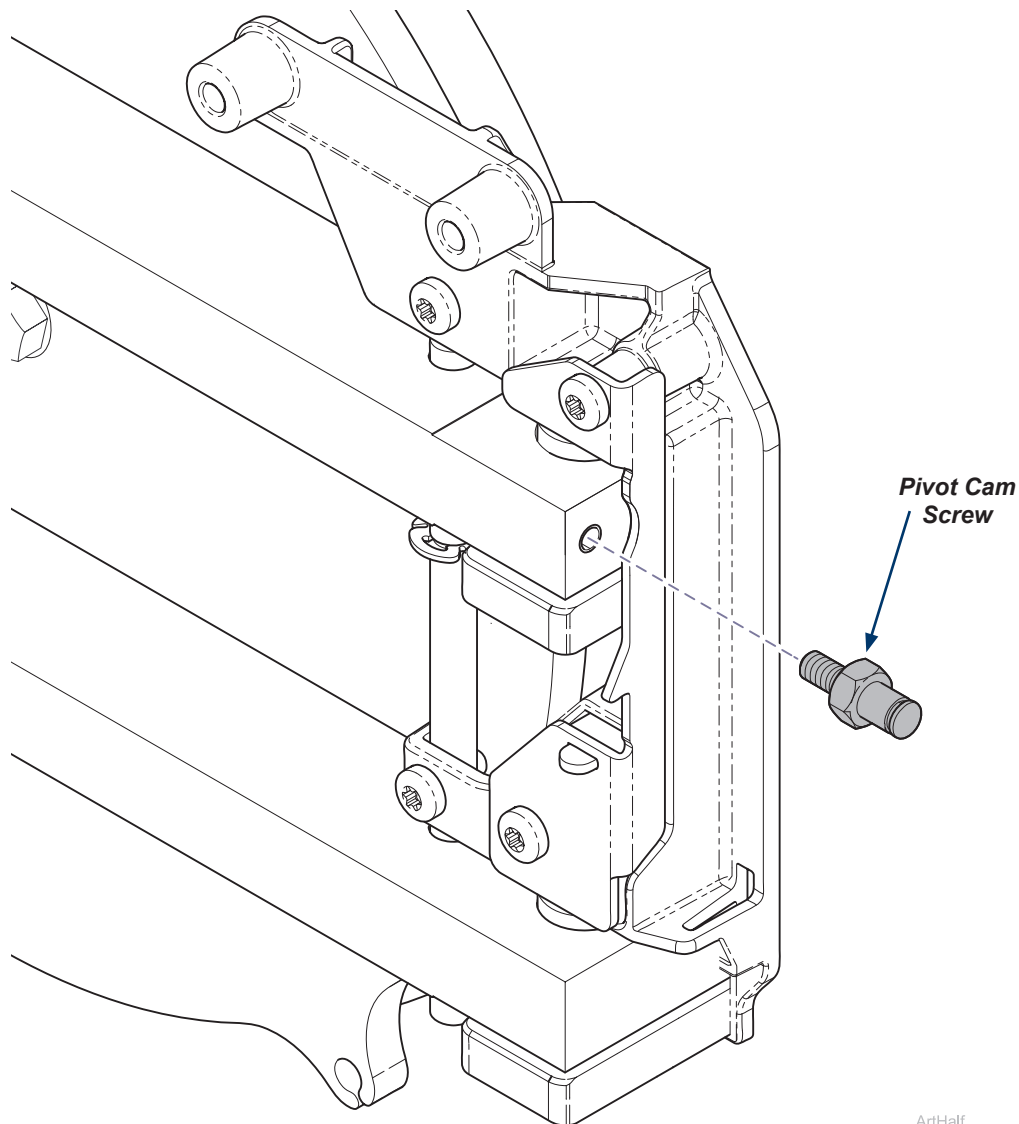
Step 12: Install door latch bracket.

- A) With door open and latch guide pin raised up, line up pins with door and rotate door latch bracket clockwise as pins drop into door.
- B) Use two screws to secure door latch bracket to latch guide pin.



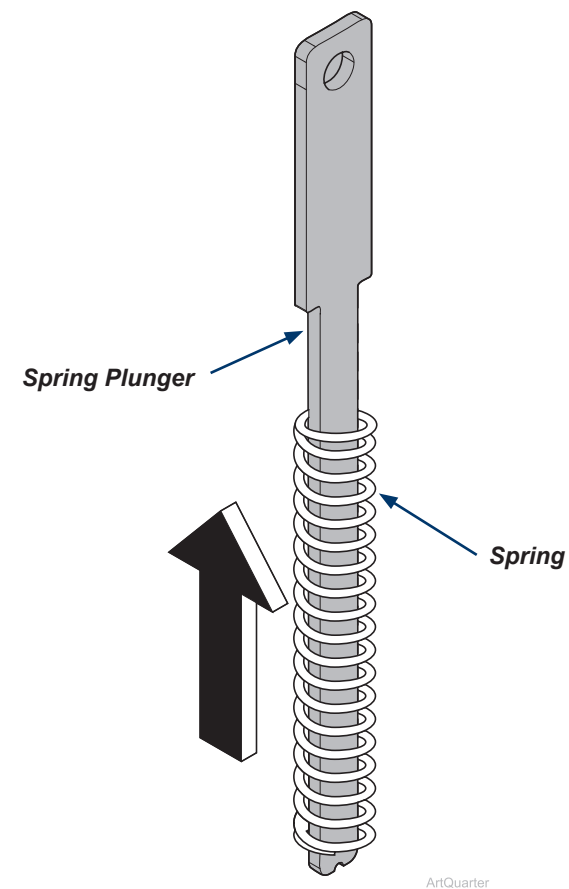
Step 13: Replace pivot cam screw.

A) Remove pivot cam screw from door assembly and replace.



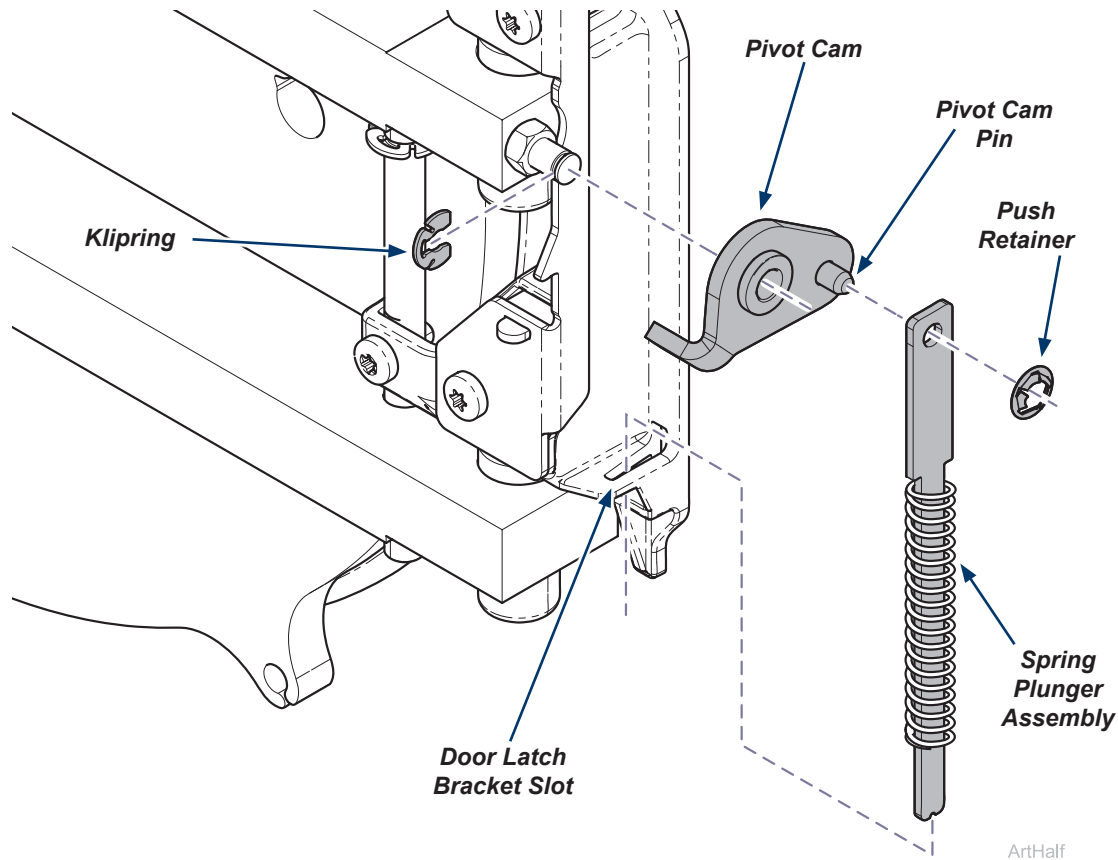
Step 14: Install spring.

A) Slide spring up onto spring plunger.



Step 15: Install pivot cam / spring plunger assembly.

- A) Install pivot cam as shown and secure with klipring.
- B) Install bottom of spring plunger assembly into door latch bracket slot and attach top to pivot cam pin.
- C) Secure spring plunger assembly to pivot cam pin with push retainer.



Step 16: To finish installation...

- A) Position outside door cover, install door handle and secure with two screws.
- B) Position inside door cover.
- C) Secure outside and inside door covers with four screws.
- D) Run a test cycle and check for proper operation.