

M9® and M11® Reservoir Tank Assy Kit

002-10885-00 M9

002-10888-00 M11

Applies to Models:

M9 (-050/-053)

M11 (-050/-051/-053)

Special Tools:

T25 Torx Screw Driver



WARNING

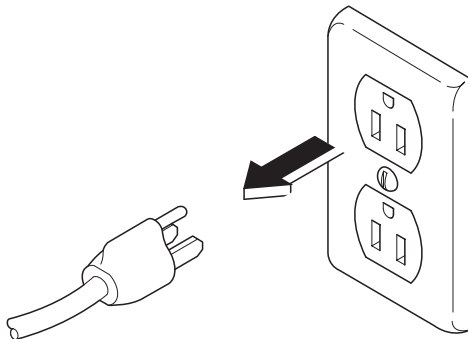
To prevent risk of shock always disconnect power before removing covers or performing any service procedure.



WARNING

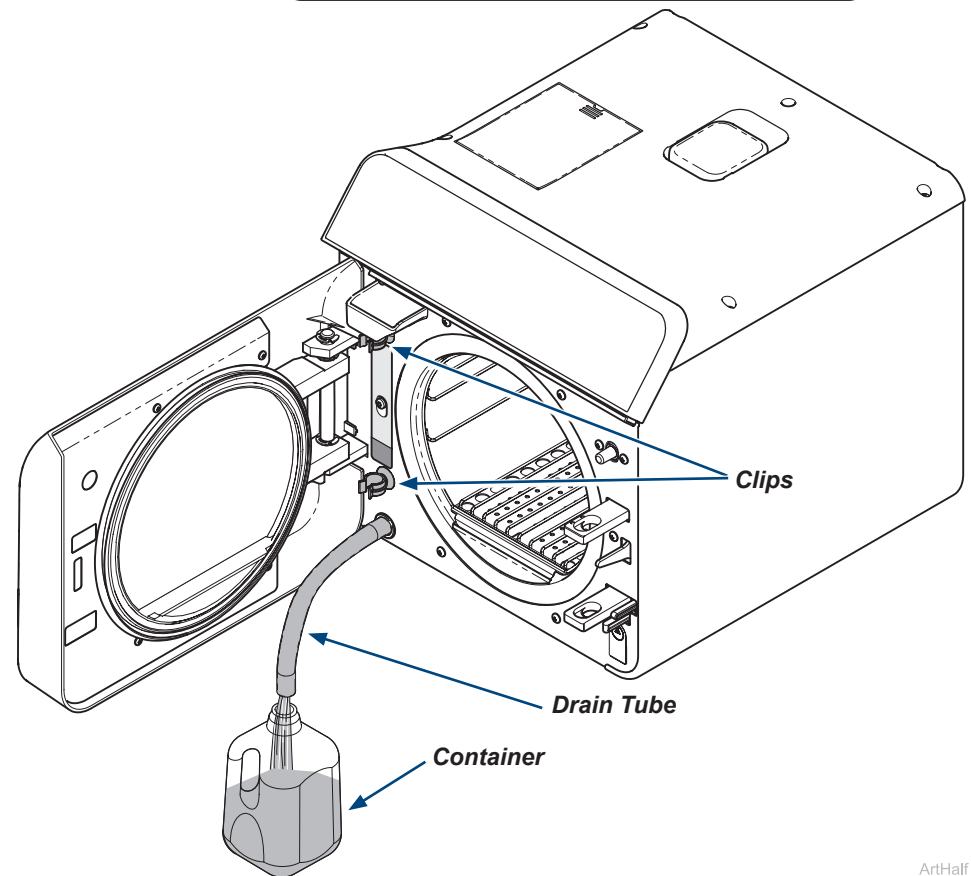
Allow to cool to ambient / room temperature prior to removing cover. Release pressure by pulling ring of pressure relief valve if necessary.

Step 1: Disconnect power.



Step 2: Drain water from reservoir.

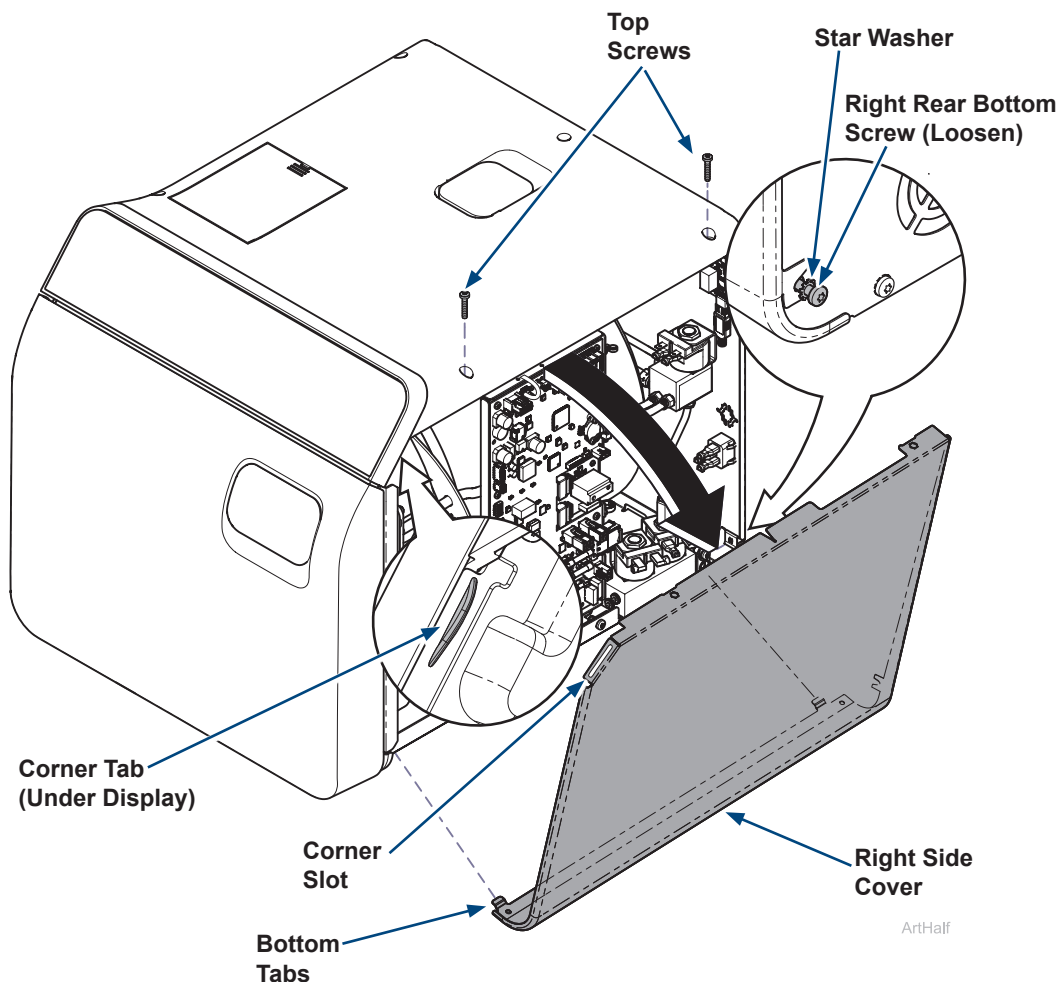
- Disconnect the drain tube from the clips.
- Bend tube downward and drain reservoir into a suitable container.



ArtHalf

Step 3: Remove right side cover.

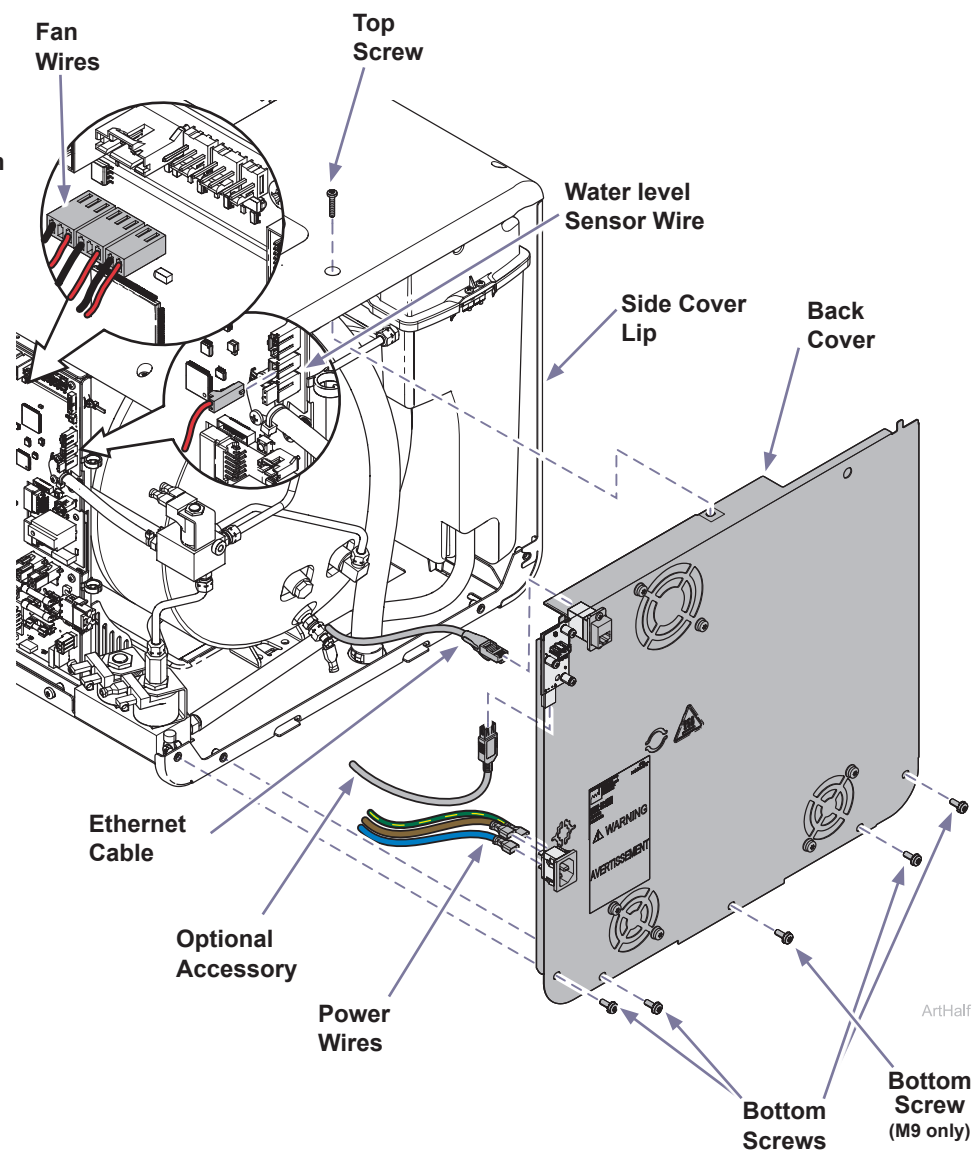
- A) Remove top two right side screws and loosen right rear bottom screw.
- B) Pull corner tab out of corner slot and rotate top of side cover down to free bottom tabs from base of sterilizer.



Step 4 : Remove back cover.

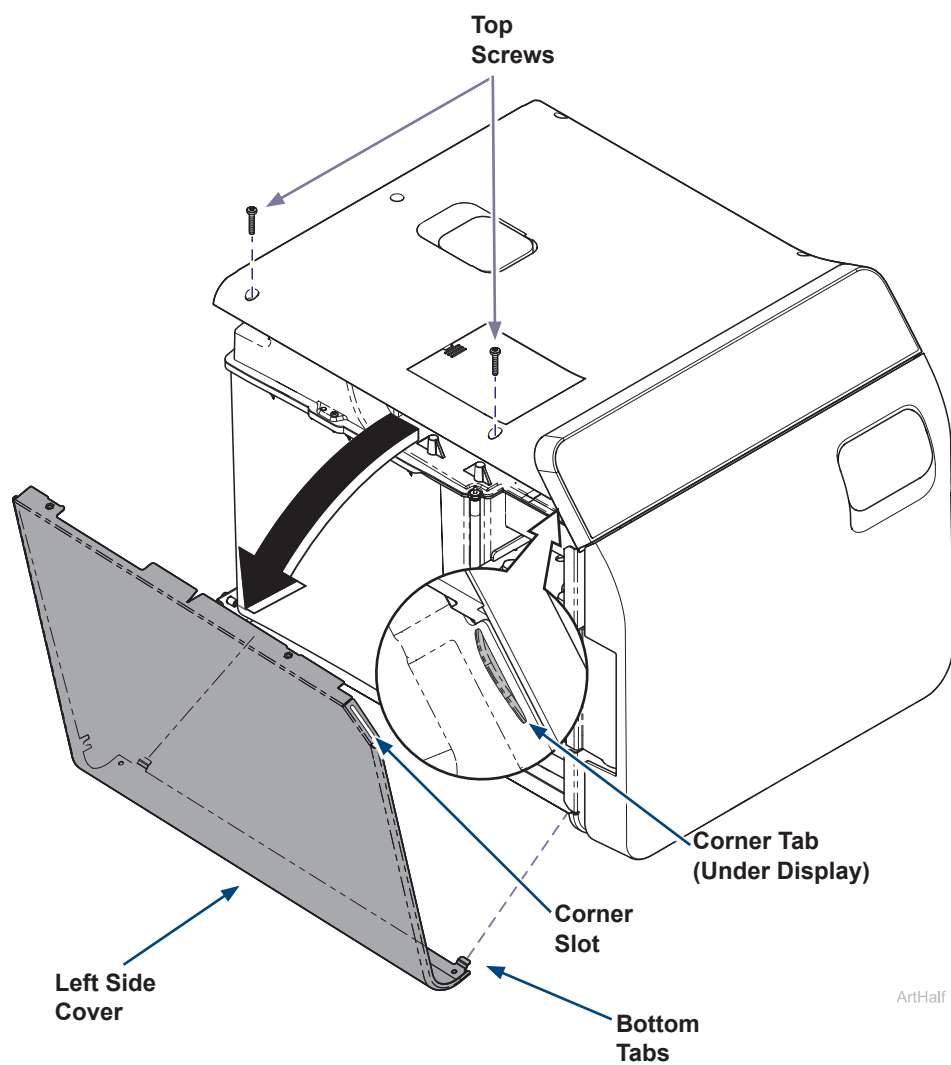
- A) Disconnect power wires, fan wires, water level sensor wire, ethernet cable and any optional accessories needed to remove back cover.
- B) Remove top back screw, back bottom screws and star washers.
- C) Remove back cover by pulling outward on top of back cover and sliding it away from side cover lip.

Note: Your sterilizer may be equipped with additional accessories that need disconnected to remove back cover.



Step 5: Remove left side cover.

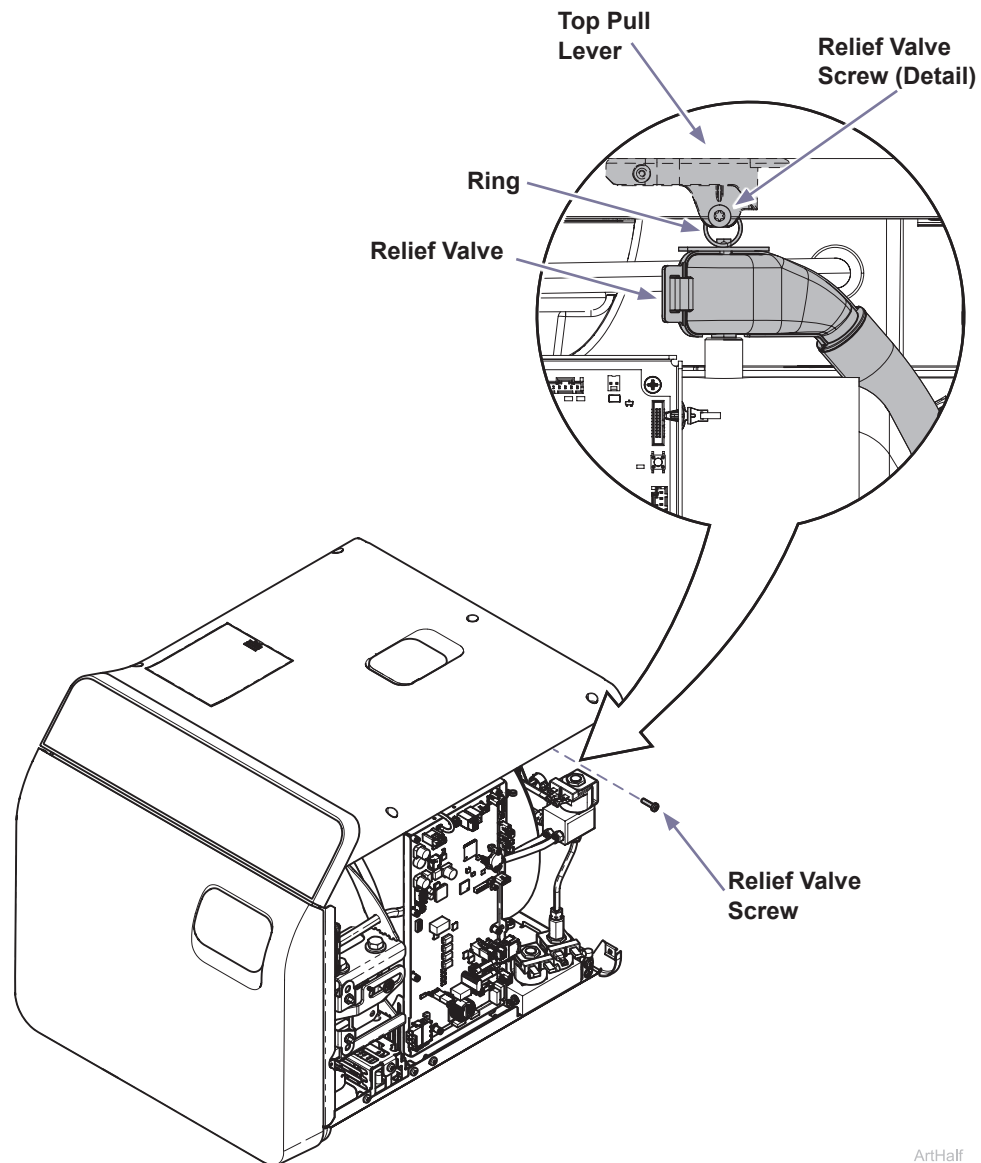
- A) Remove two top screws.
- B) Pull corner tab out of corner slot and rotate top of side cover down to free bottom tabs from base of sterilizer.



ArtHalf

Step 6: Remove top cover hardware.

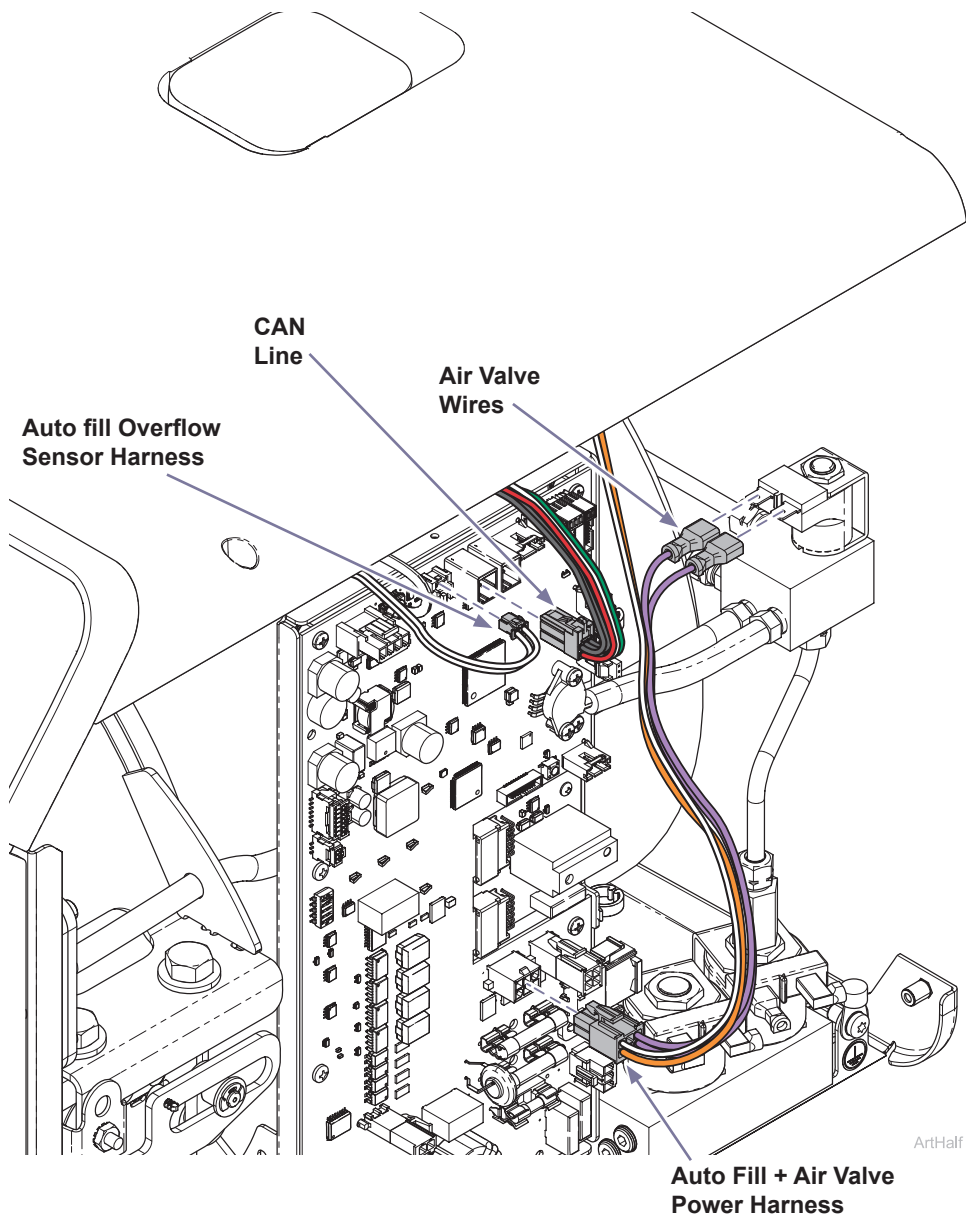
- A) Remove screw attaching ring of pressure relief valve to top pull lever.



ArtHalf

Step 7: Disconnect wiring to top cover.

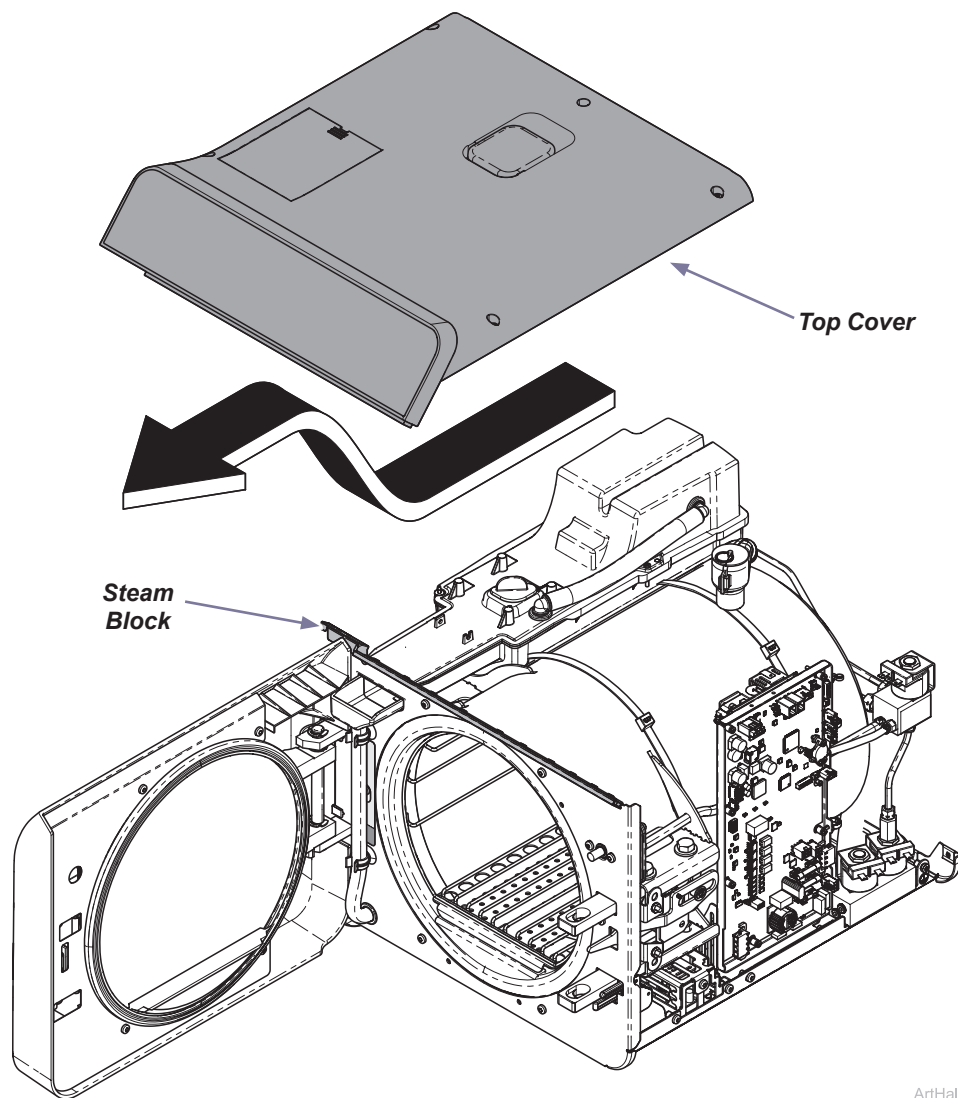
- A) Disconnect CAN line, auto fill overflow sensor harness and auto fill + air valve power harness from the PC board.
- B) Disconnect air valve wires, and any optional accessories needed to remove top cover.



Step 8: Remove top cover.

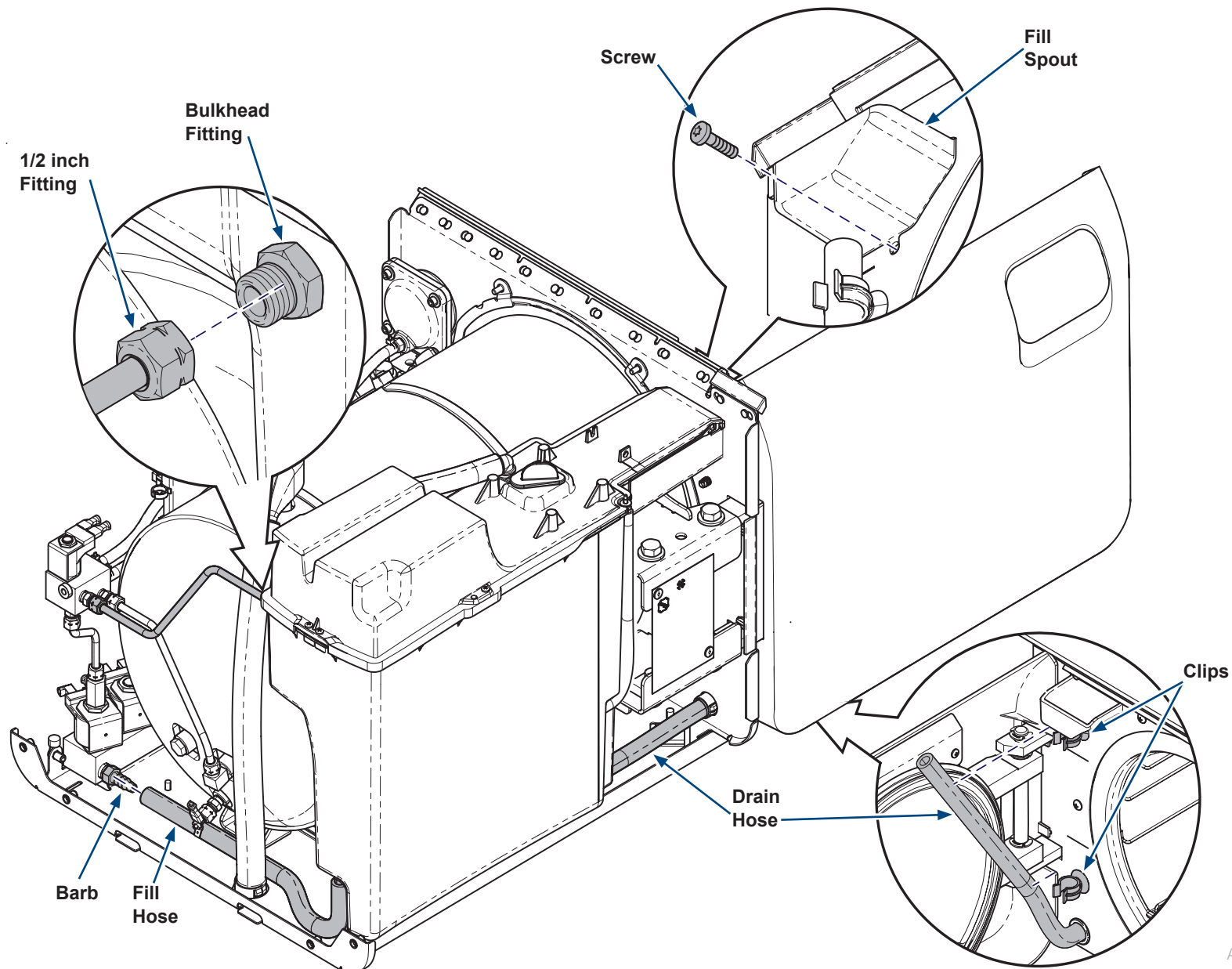
- A) Open door.
- B) Lift top cover forward and up to remove.

Note: The front edge of top cover will come out of groove in the steam block.



Step 9: Remove screw, disconnect hoses and tubing.

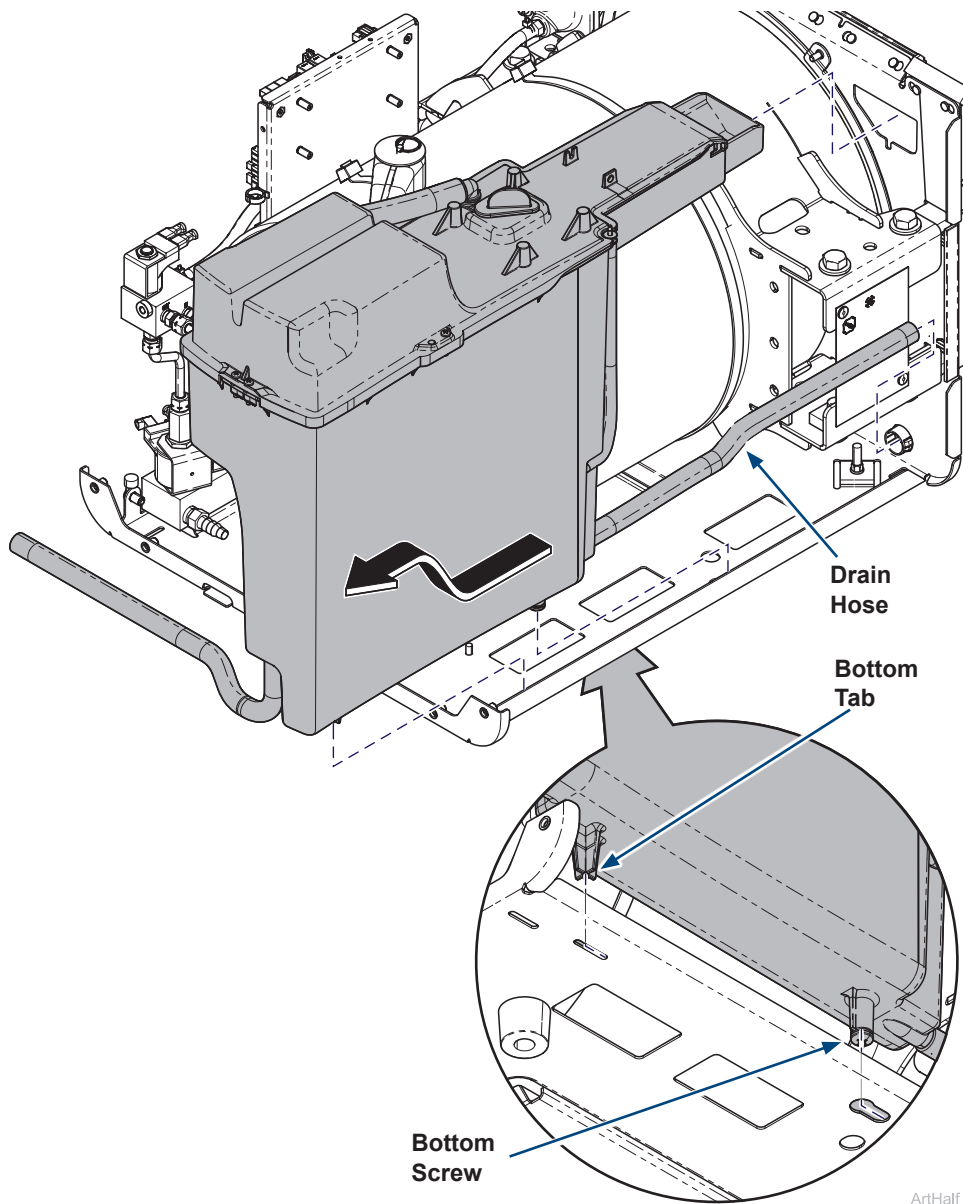
- A) Open door and remove screw from front of reservoir under fill spout.
- B) Remove drain hose from clips if not still removed from draining reservoir.
- C) Remove fill hose from barb on manifold block.
- D) Disconnect tubing from air valve manifold to reservoir by removing 1/2 inch fitting from bulkhead fitting.



ArtFull

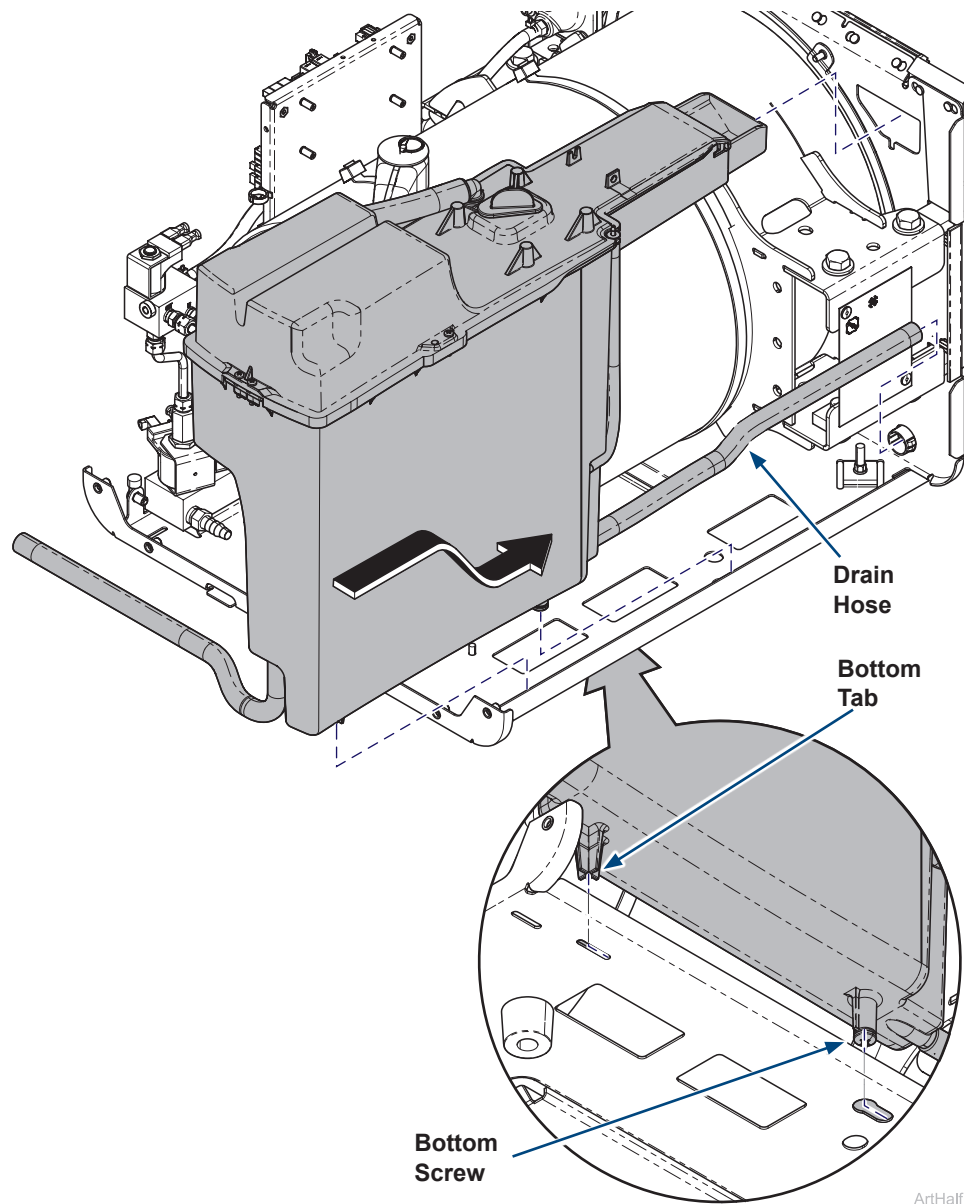
Step 10: Remove reservoir tank.

- A) Disengage reservoir bottom tab and screw from bottom plate slots by sliding reservoir toward back.
- B) Route drain hose out of hole in front panel.
- C) Remove reservoir tank.



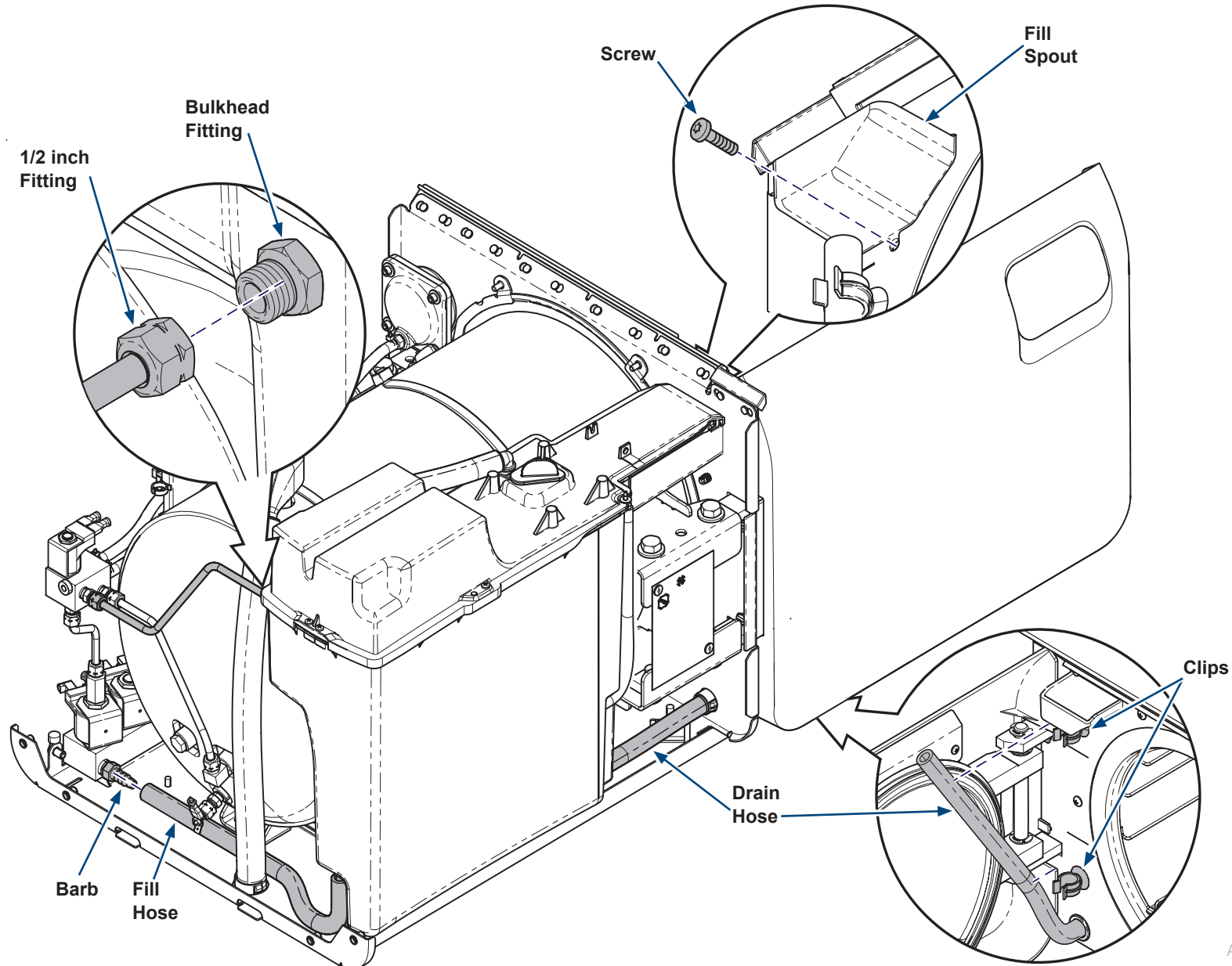
Step 11: Install reservoir tank.

- A) Route drain hose out of hole in front panel.
- B) Engage reservoir bottom tab and screw into bottom plate slots by sliding reservoir toward front.



Step 12: Install screw, connect hoses and tubing.

- A) Open door and install screw into front of reservoir under fill spout.
- B) Attach drain hose into clips.
- C) Install fill hose onto barb on manifold block.
- D) Connect tubing from air valve manifold to reservoir by attaching 1/2 inch fitting to bulkhead fitting.

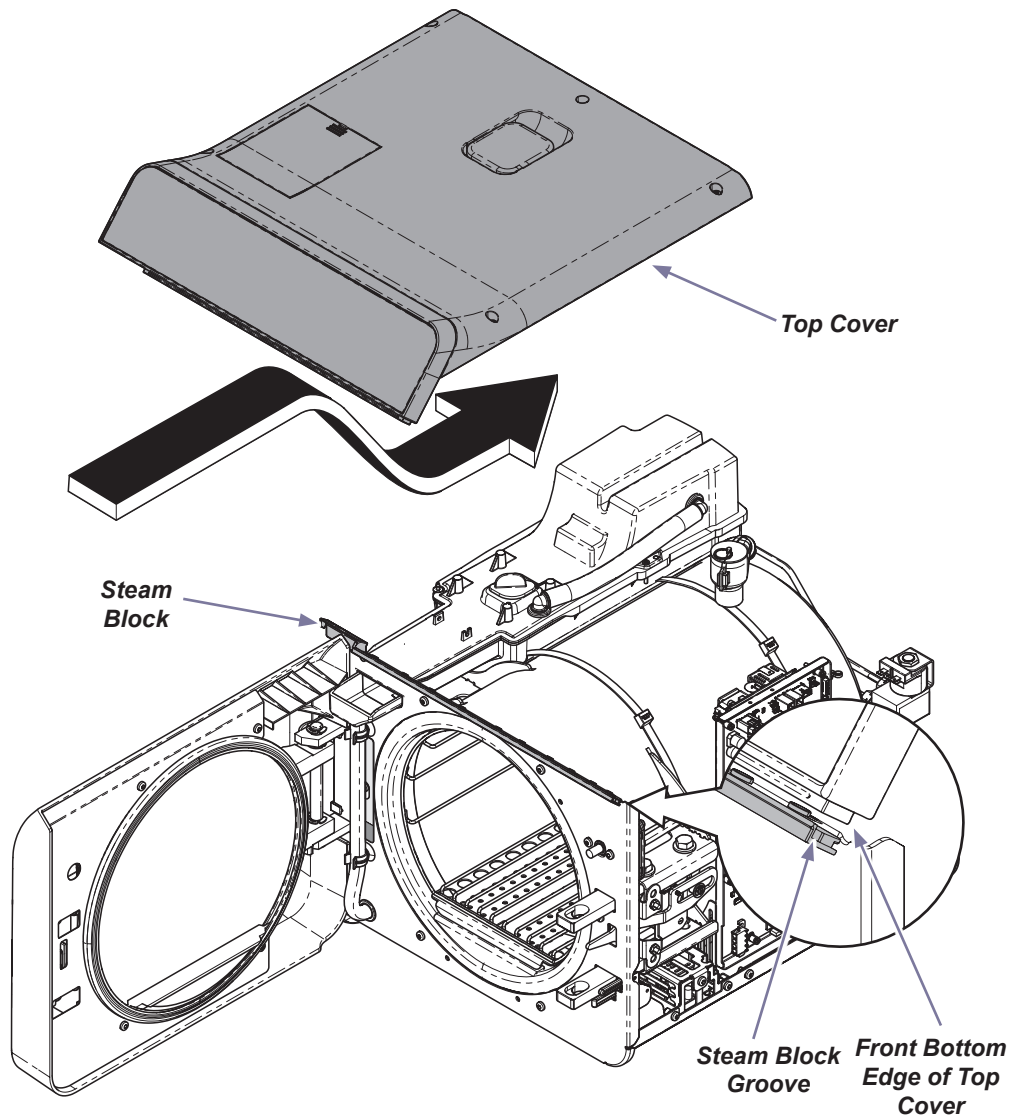


ArtFull

Step 13: Install top cover.

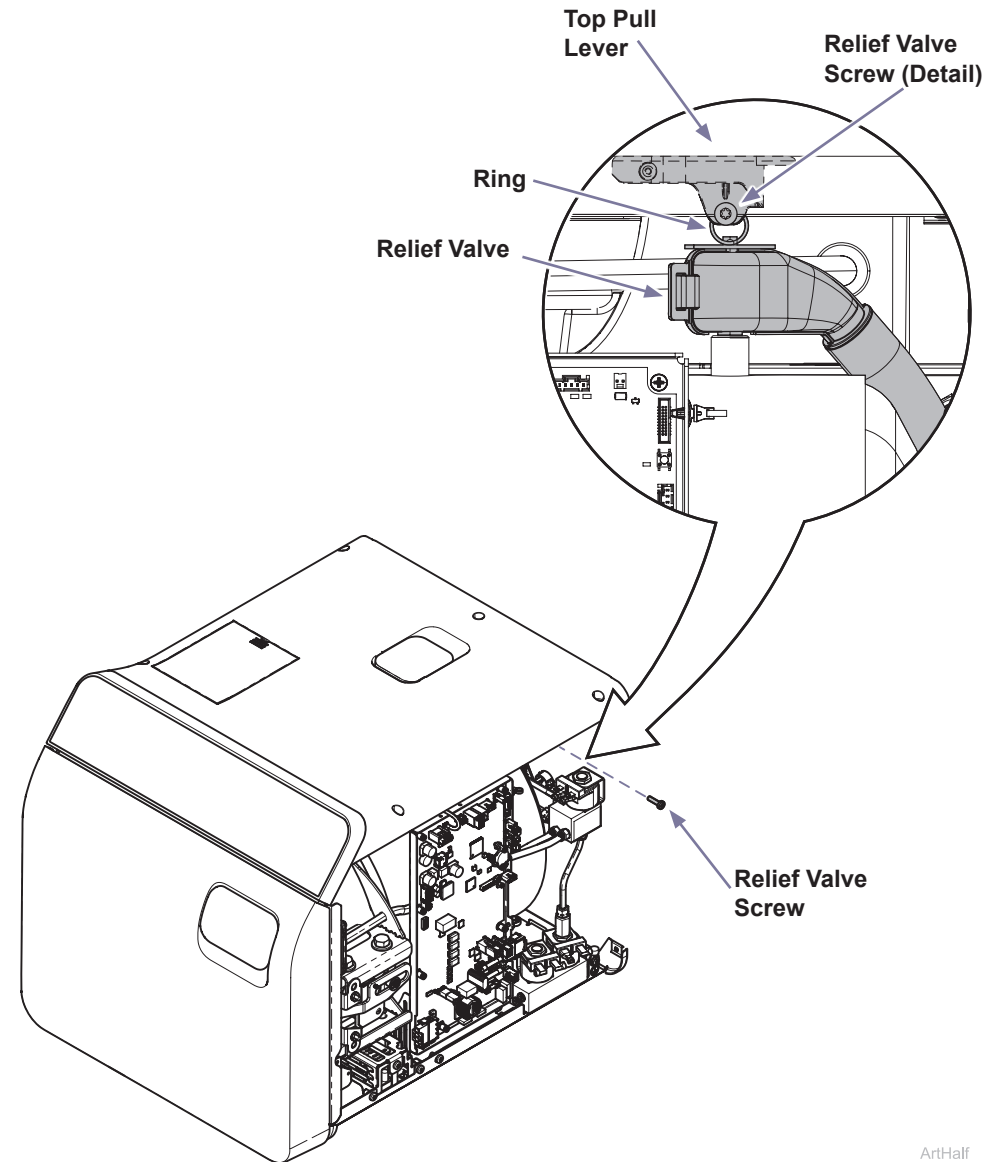
- A) Open door.
- B) Tuck front bottom edge of top cover into groove of steam block. Then set top cover down in position.

Note: The front edge of top cover fits down in the groove of steam block.



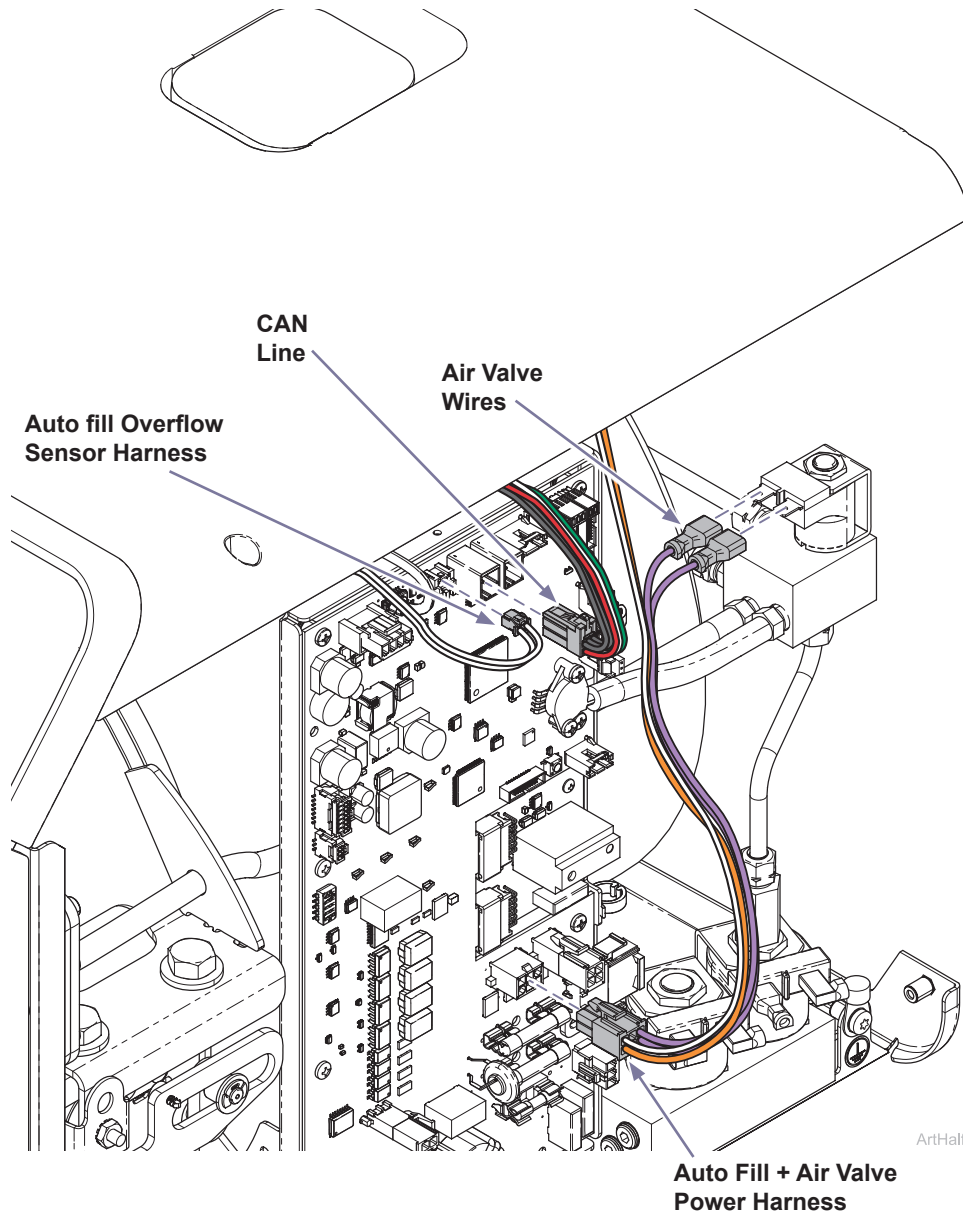
Step 14: Install top cover hardware.

- A) Hold ring of pressure relief valve in center of top pull lever. Then install screw attaching ring of pressure relief valve to top pull lever.



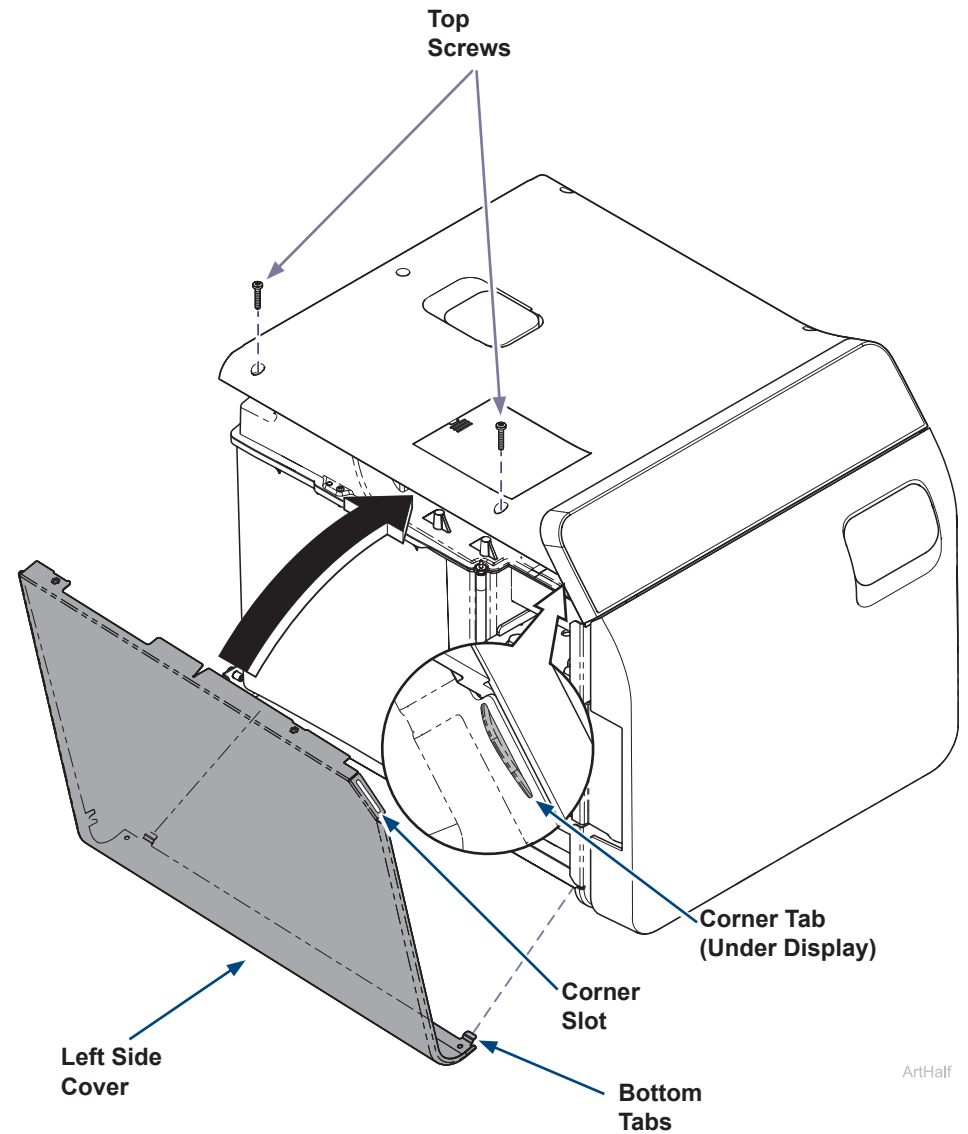
Step 15: Connect wiring to top cover.

- A) Connect CAN line, auto fill overflow sensor harness and auto fill + air valve power harness from the PC board.
- B) Connect air valve wires, ethernet cable and any optional accessories that were disconnected to remove top cover.



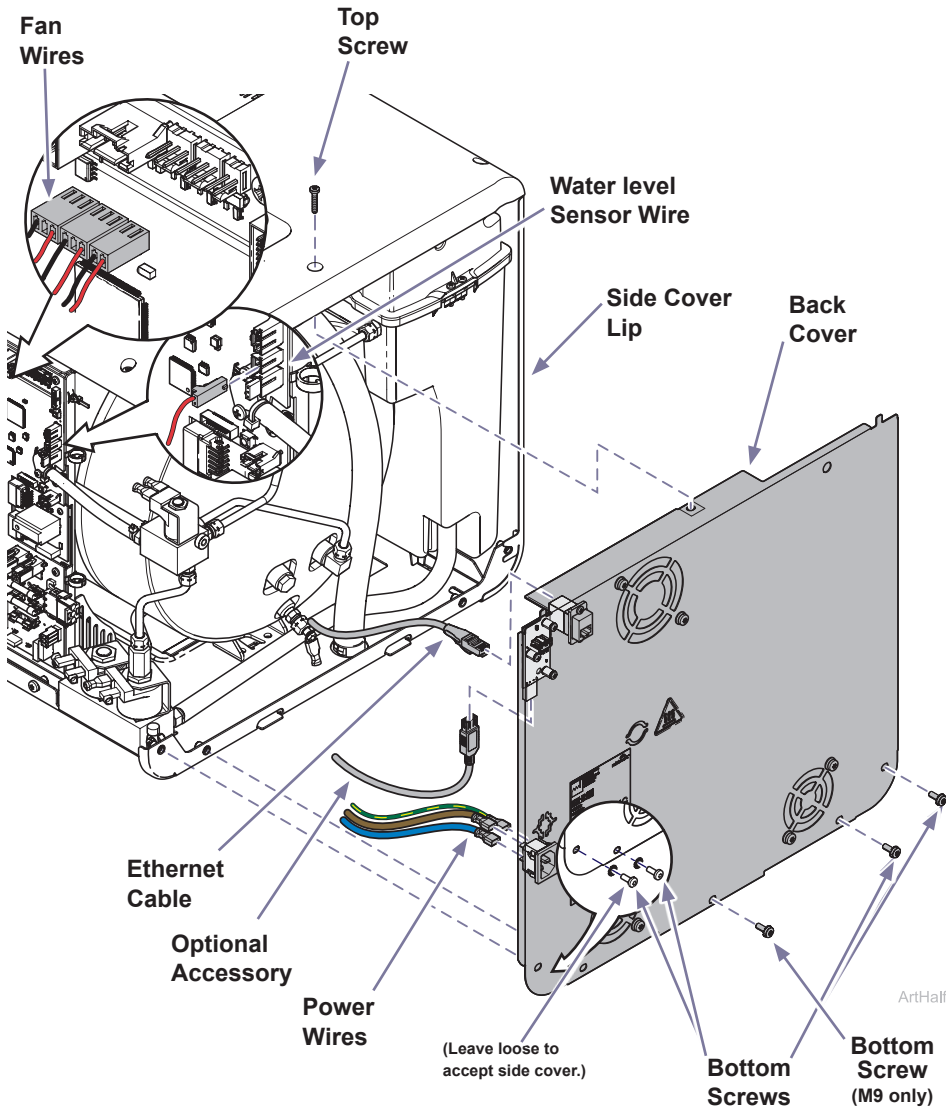
Step 16: Install left side cover.

- A) Insert bottom tabs of left side cover into base of sterilizer.
- B) Rotate top of side cover up into position and snap corner tab into corner slot.
- C) Install top two left side screws.



Step 17: Install back cover.

- A) Reinstall back cover by inserting bottom corner into side cover lip. Lift up top cover to position back cover underneath then slide back cover to the right behind rest of side cover lip.
- B) Secure back cover with top screw and back bottom screws and star washers. Leave left most corner bottom screw loose to accept side cover.
- C) Connect power wires, fan wires, water level sensor wire, ethernet cable and any optional accessories disconnected in previous steps.



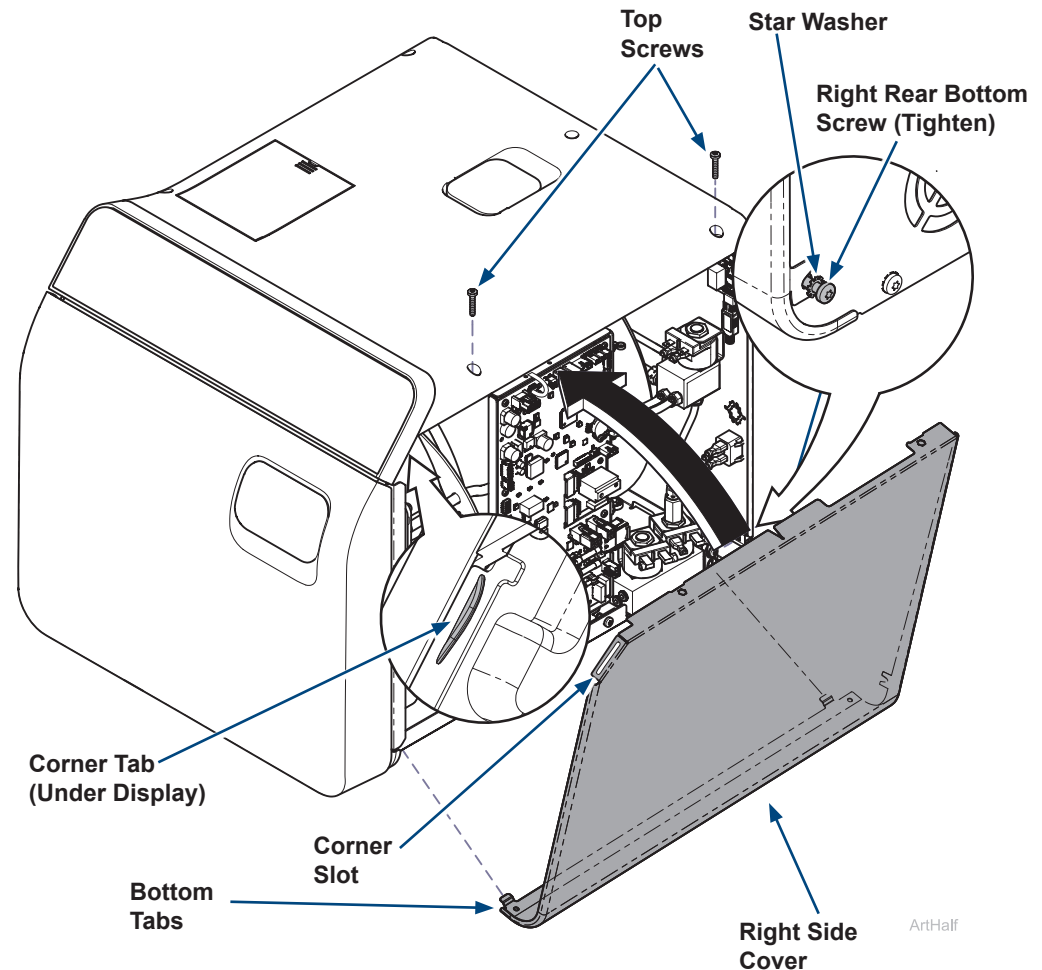
Step 18: Install right side cover.

- A) Insert bottom tabs of right side cover into base of sterilizer.
- B) Rotate top of side cover up into position and snap corner tab into corner slot.
- C) Install top two right side screws and tighten right rear bottom screw.



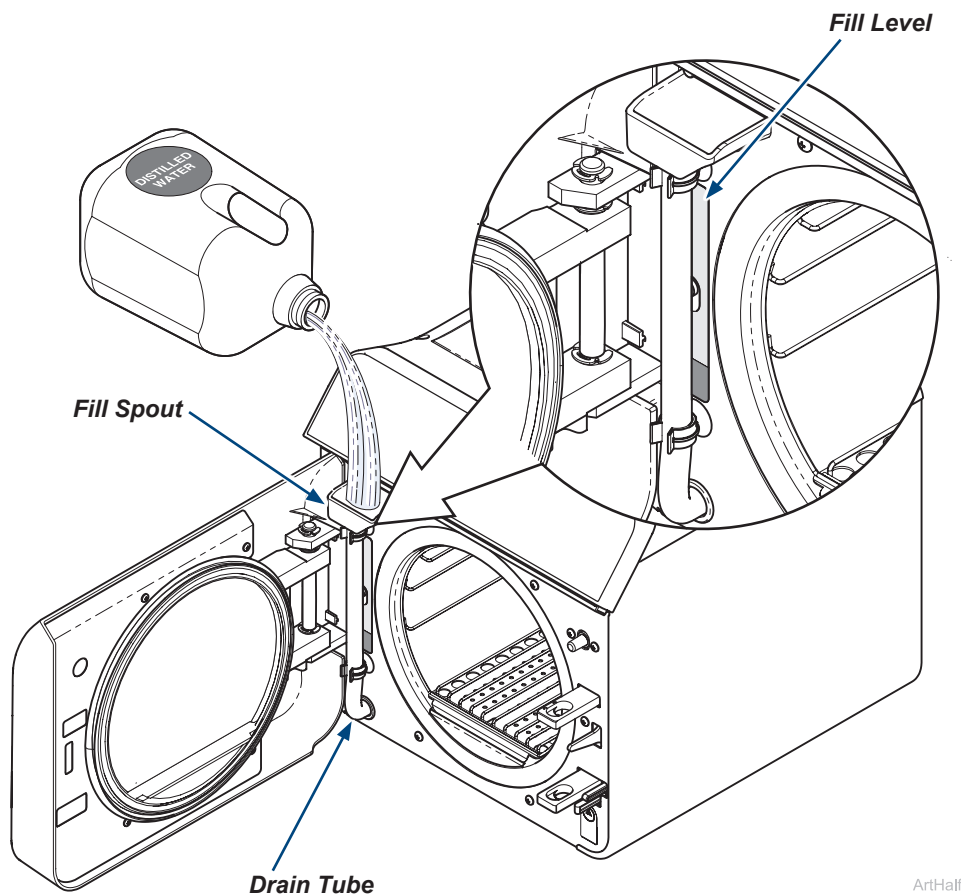
WARNING

For effective grounding make sure star washer is located between screw head and tab of side cover when tightening right rear bottom screw.



Step 19: Add water to reservoir and run a test cycle.

- A) Pour distilled water into fill opening until water level reaches top of the fill level.
- B) Run a test cycle and check for leaks.



Equipment Alert

Use distilled water or water that meets referenced water purity specifications in the User Guide. Failure to comply may result in sterilizer malfunction and/or premature failure due to excessive corrosion.