

M9® and M11® Door Interlock Kit 002-10894-00

Applies to Models:

M9 (-050/-053)

M11 (-050/-051/-053)

Special Tools:

T25 Torx Screw Driver



WARNING

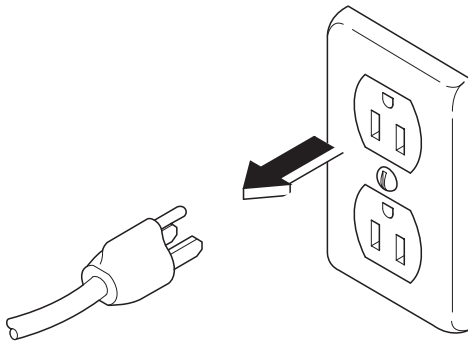
To prevent risk of shock always disconnect power before removing covers or performing any service procedure.



WARNING

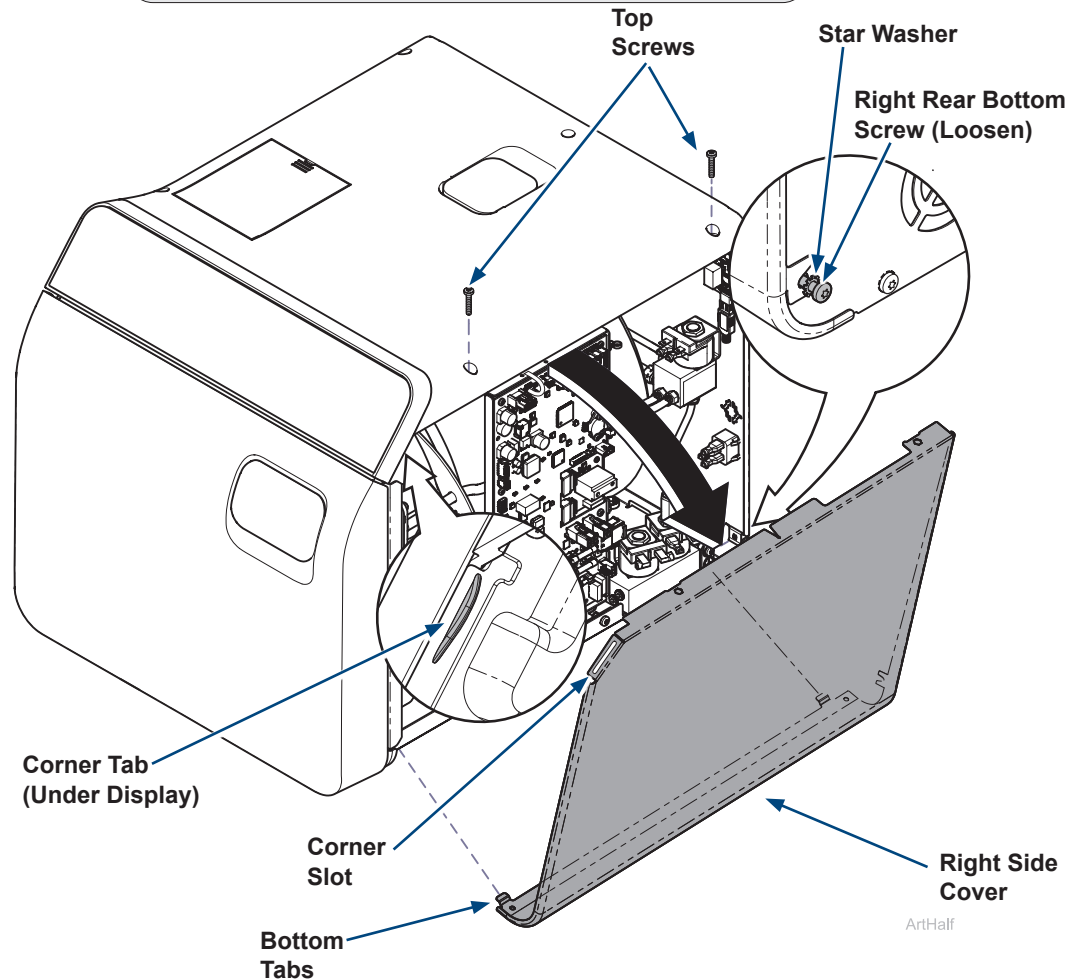
Allow to cool to ambient / room temperature prior to removing cover. Release pressure by pulling ring of pressure relief valve if necessary.

Step 1: Disconnect power.

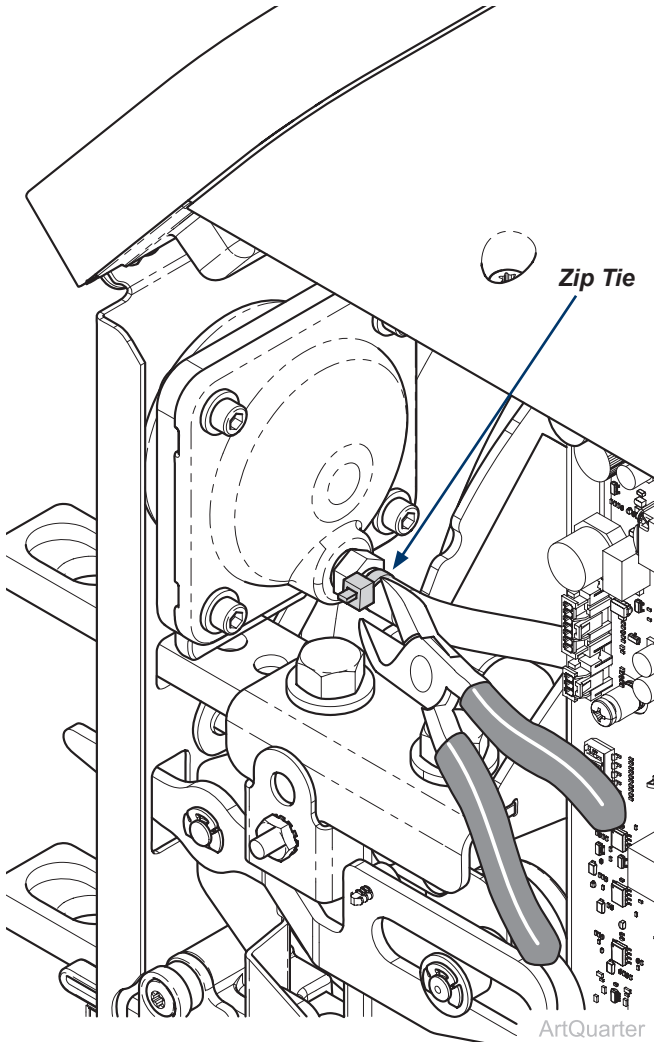


Step 2: Remove right side cover.

- Remove top two right side screws and loosen right rear bottom screw.
- Pull corner tab out of corner slot and rotate top of side cover down to free bottom tabs from base of sterilizer.

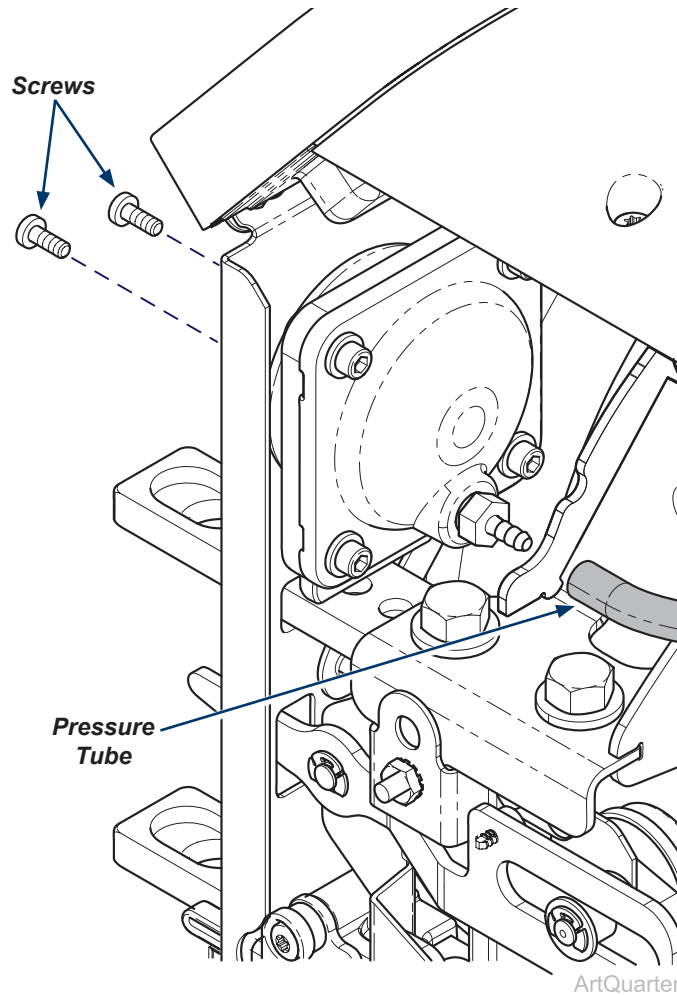


Step 3: Cut cable tie attaching hose.

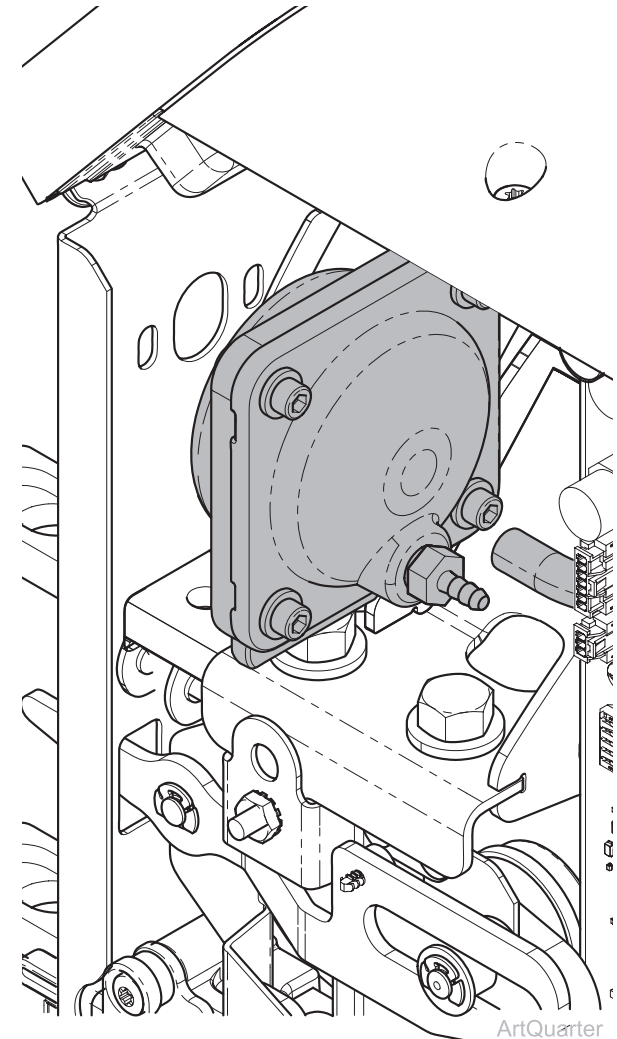


Step 4:

- A) Disconnect pressure tube.
- B) Remove two mounting screws.

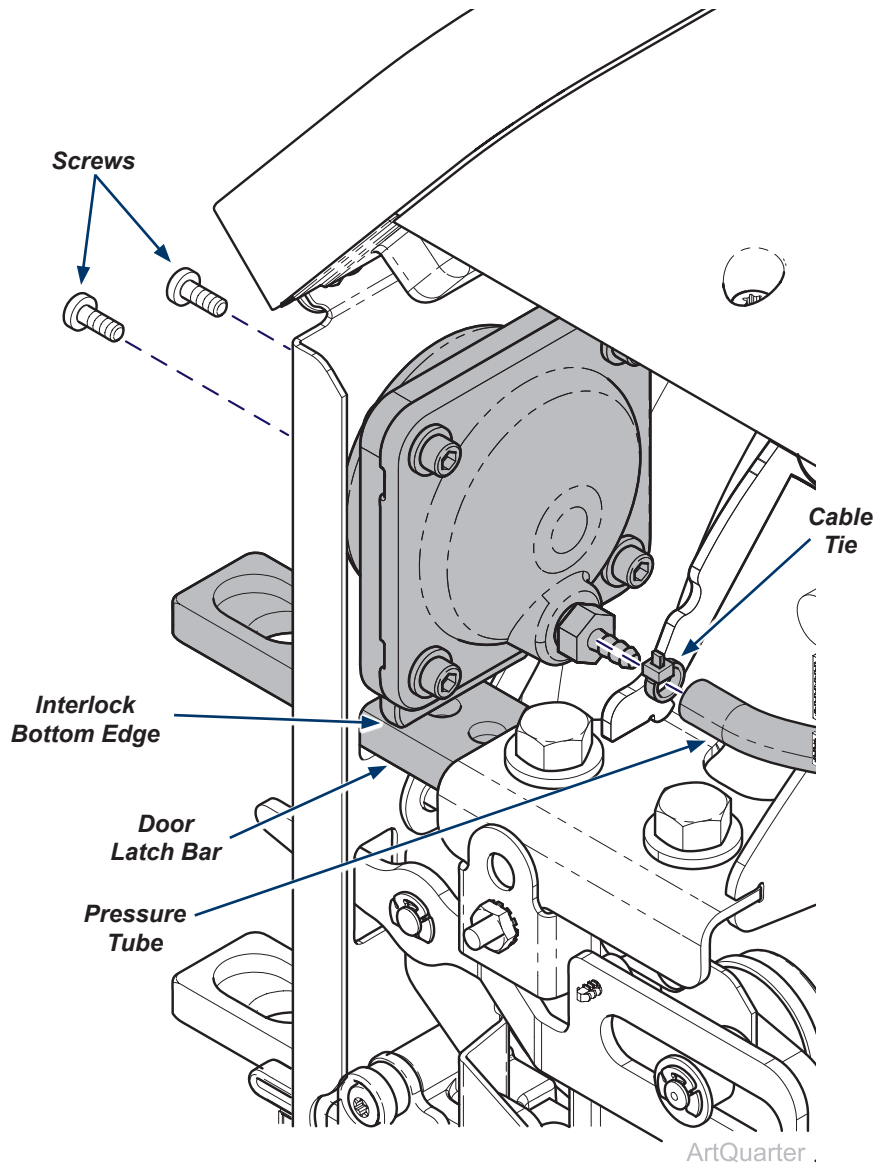


Step 5: Remove Interlock assembly.



Step 6: Install Interlock Assembly.

- A) Position bottom edge of interlock squarely on the top surface of the door latch bar.
- B) Secure interlock with two screws.
- C) Attach pressure tube and secure with cable tie.



Step 9: Install right side cover.

- A) Insert bottom tabs of right side cover into base of sterilizer.
- B) Rotate top of side cover up into position and snap corner tab into corner slot.
- C) Install top two right side screws and tighten right rear bottom screw.
- D) Run a test cycle and check for leaks.



WARNING

For effective grounding make sure star washer is located between screw head and tab of side cover when tightening right rear bottom screw.

