

M9® and M11® Door Motor Harness Kit

002-10898-00

Applies to Models:

M9 (-050/-053)

M11 (-050/-051/-053)

Special Tools:

T25 Torx Screw Driver



WARNING

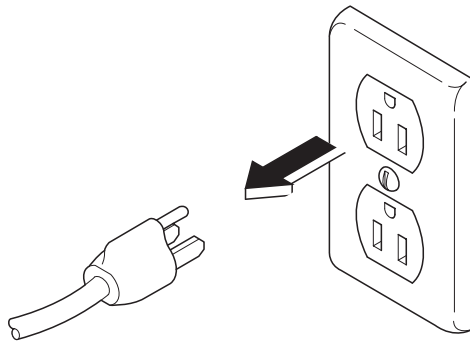
To prevent risk of shock always disconnect power before removing covers or performing any service procedure.



WARNING

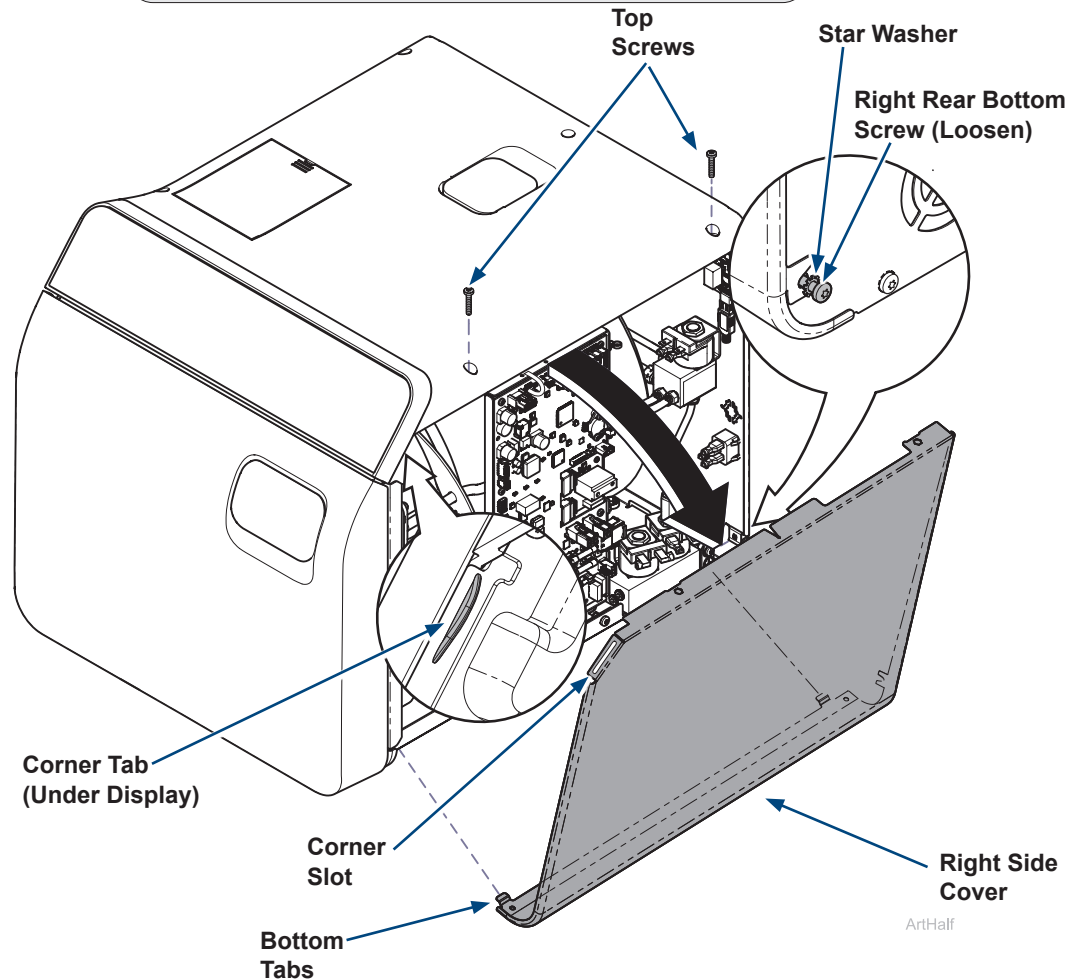
Allow to cool to ambient / room temperature prior to removing cover. Release pressure by pulling ring of pressure relief valve if necessary.

Step 1: Disconnect power.



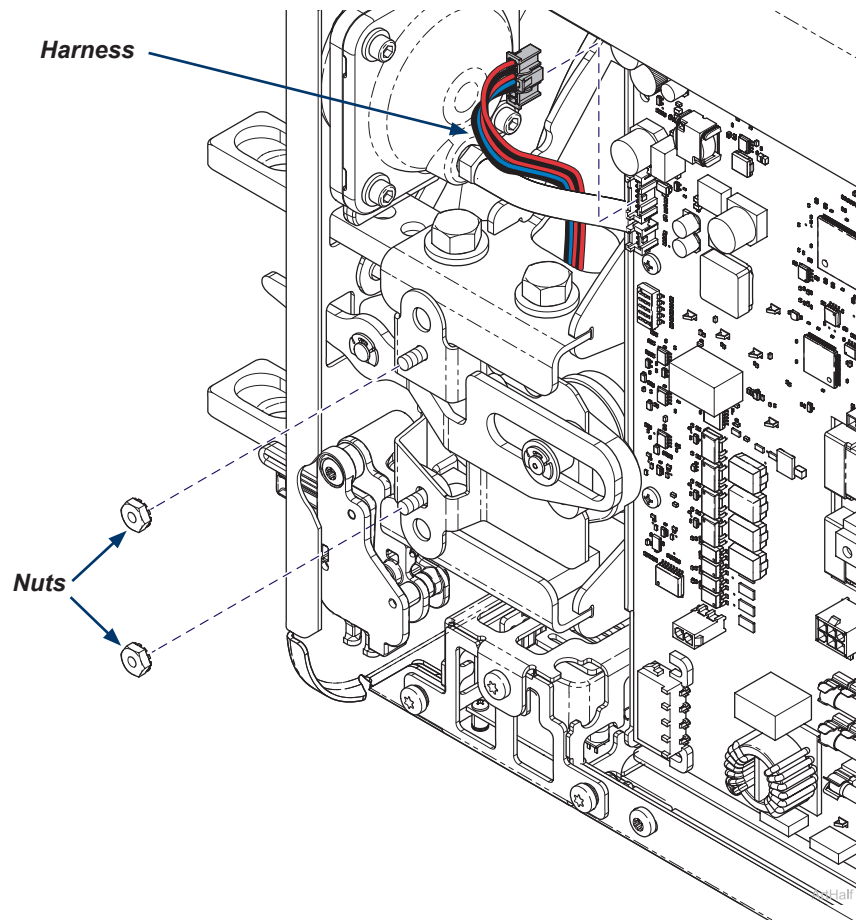
Step 2: Remove right side cover.

- Remove top two right side screws and loosen right rear bottom screw.
- Pull corner tab out of corner slot and rotate top of side cover down to free bottom tabs from base of sterilizer.

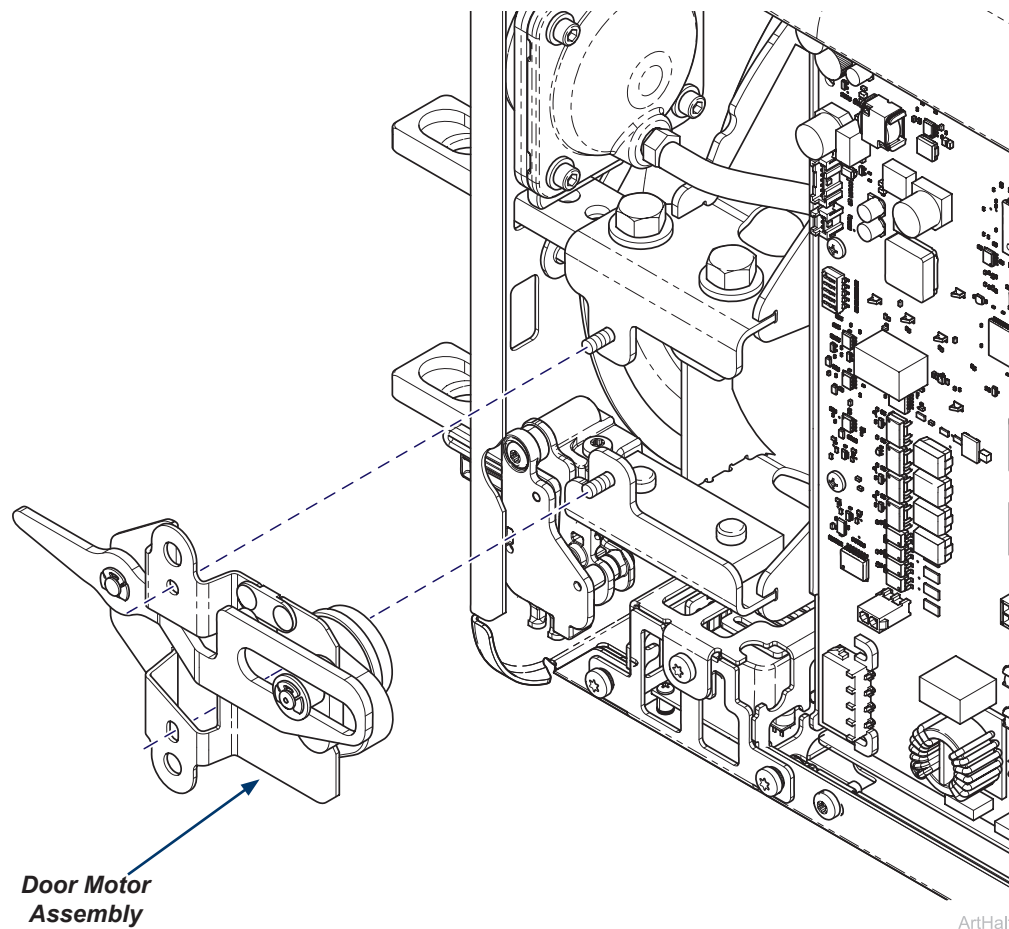


Step 3: Remove nuts and disconnect harness.

- A) Disconnect harness from PC Board.
- B) Remove two mounting nuts.



Step 4: Remove door motor assembly.



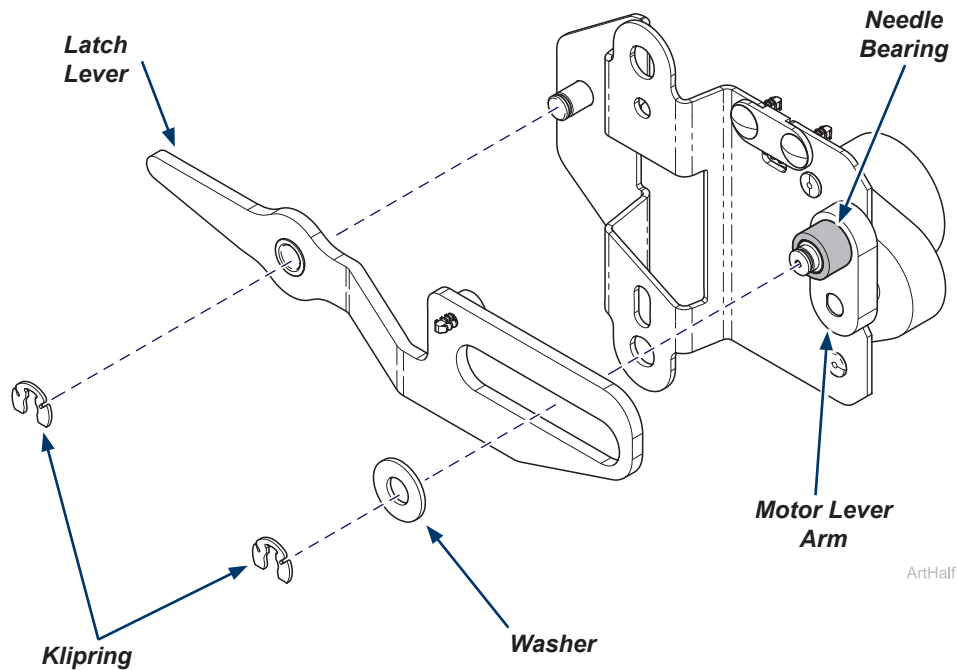
Step 5: Remove latch lever.

- A) Remove two kliprings and one washer.
- B) Remove latch lever.



Equipment Alert

Ensure needle bearing on the motor lever arm stays in place.



Step 6: Replace harness and hall effect sensor.

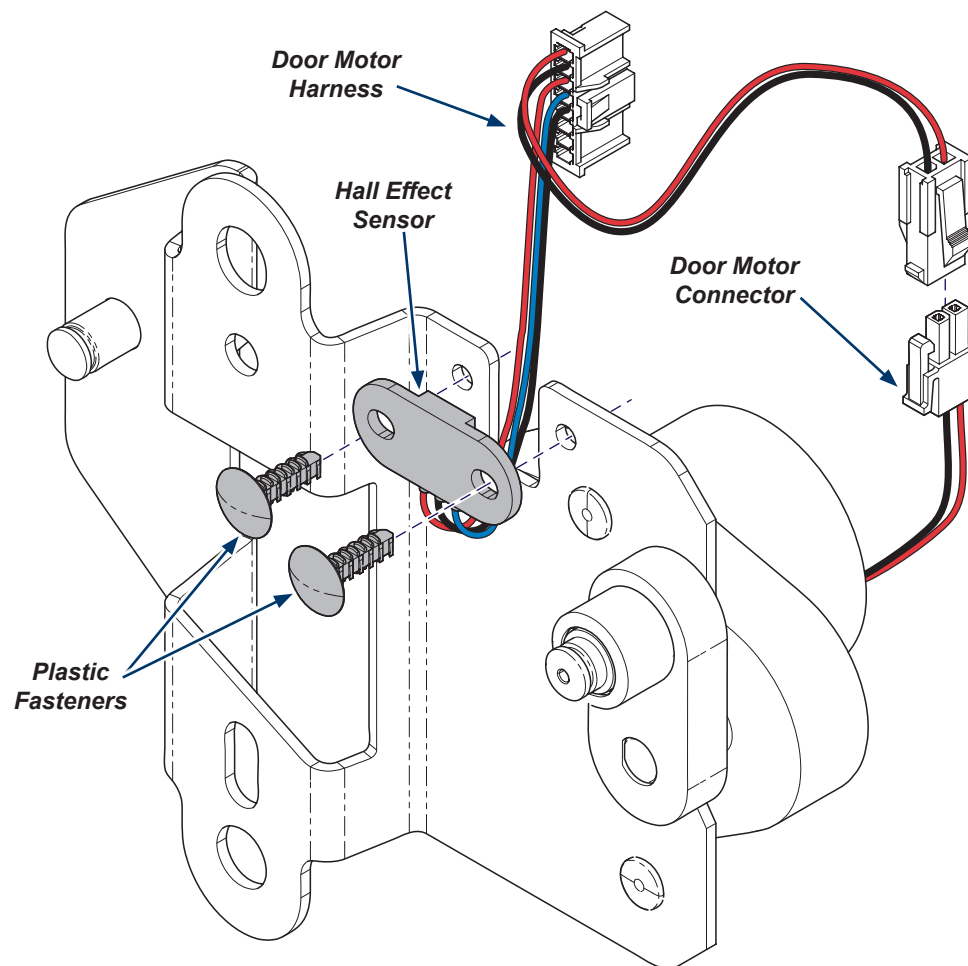
- A) Remove two plastic fasteners to remove the hall effect sensor.
- B) Disconnect the door motor connector from the harness.
- C) Install new harness to the door motor connector.
- D) Install new hall effect sensor as shown using the two plastic fasteners.

Note: The back side of the plastic fasteners can be cut off with a pair of side cutters to ease removal.



Equipment Alert

Ensure hall effect sensor orientation is correct. Locate wires towards the bottom and notch towards the door motor assembly.



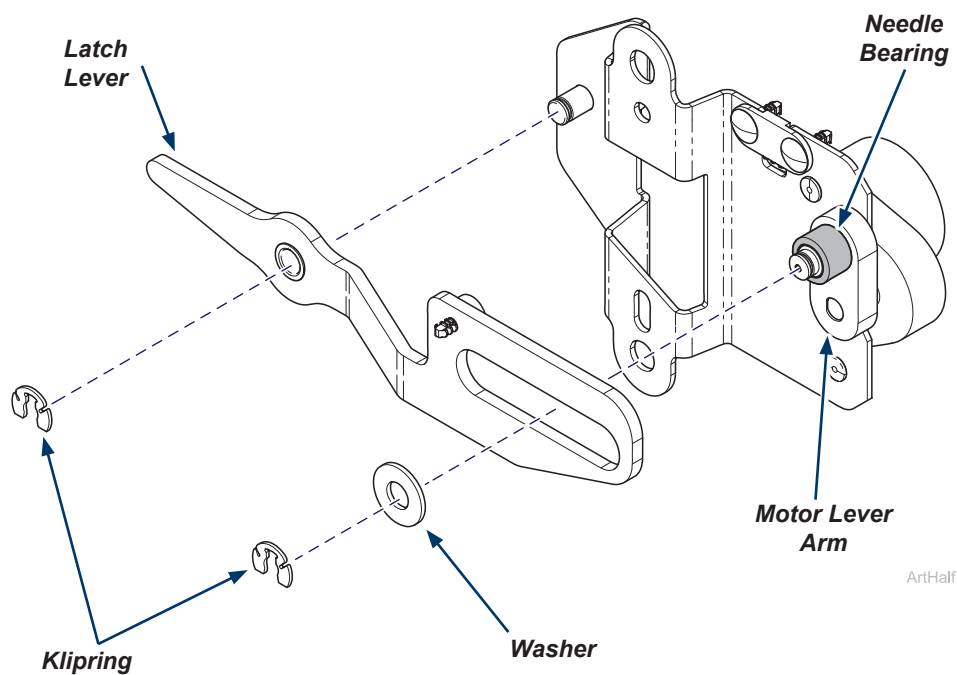
Step 7: Install latch lever.

- A) Position latch lever.
- B) Ensure needle bearing is in place on motor lever arm.
- C) Secure latch lever with washer and two kliprings.



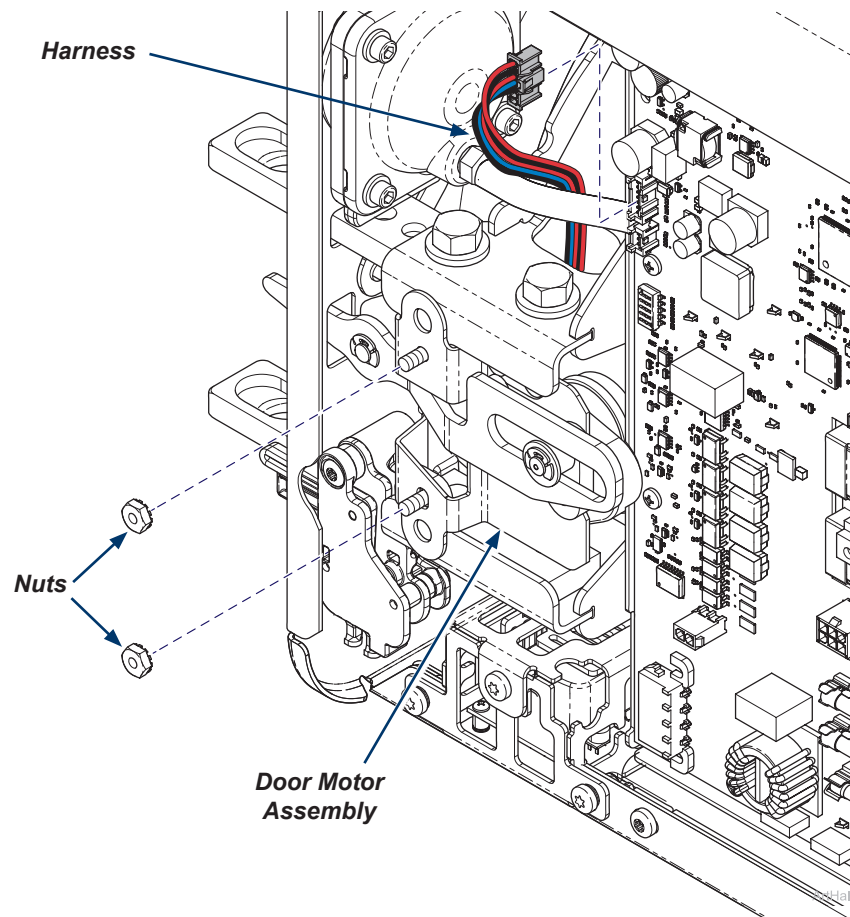
Equipment Alert

Ensure needle bearing on the motor lever arm stays in place.



Step 8: Install door motor assembly.

- A) Position door motor and route wire harness.
- B) Secure door motor assembly with two nuts.
- C) Attach harness to PC Board.



Step 9: Install right side cover.

- A) Insert bottom tabs of right side cover into base of sterilizer.
- B) Rotate top of side cover up into position and snap corner tab into corner slot.
- C) Install top two right side screws and tighten right rear bottom screw.
- D) Run a test cycle and check for proper operation.



WARNING

For effective grounding make sure star washer is located between screw head and tab of side cover when tightening right rear bottom screw.

