

M9® and M11® Door Latch Lever Kit 002-10946-00

Applies to Models:

M9 (-050/-053)

M11 (-050/-051/-053)

Special Tools:

T25 Torx Screw Driver



WARNING

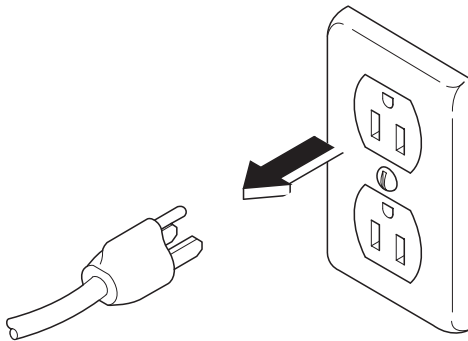
To prevent risk of shock always disconnect power before removing covers or performing any service procedure.



WARNING

Allow to cool to ambient / room temperature prior to removing cover. Release pressure by pulling ring of pressure relief valve if necessary.

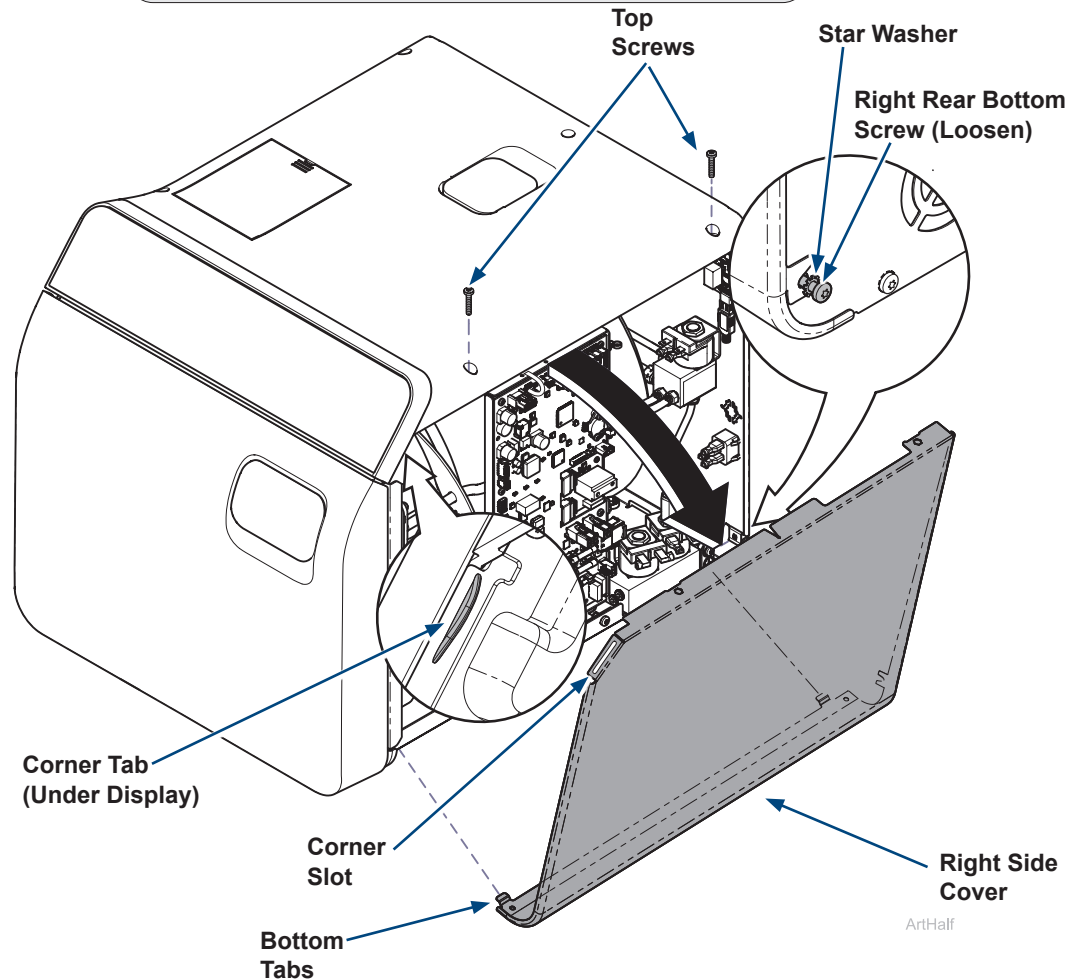
Step 1: Disconnect power.



Step 2: Remove right side cover.

A) Remove top two right side screws and loosen right rear bottom screw.

B) Pull corner tab out of corner slot and rotate top of side cover down to free bottom tabs from base of sterilizer.



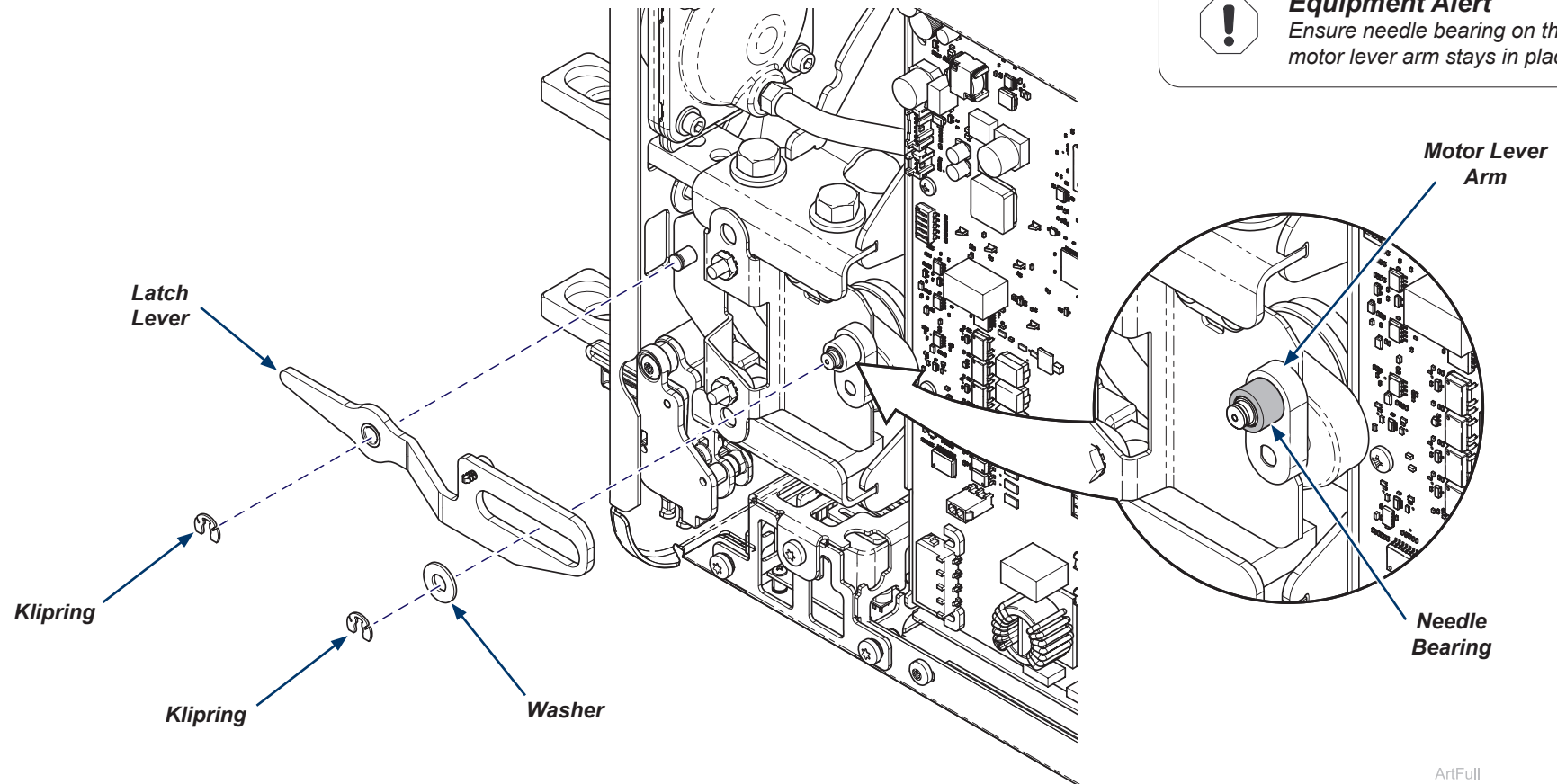
Step 3: Remove Latch Lever.

- A) Remove two kliprings and one washer.
- B) Remove latch lever.



Equipment Alert

Ensure needle bearing on the motor lever arm stays in place.



ArtFull

Step 4: Install Latch Lever.

- A) Position latch lever.
- B) Ensure needle bearing is in place on motor lever arm.
- C) Secure latch lever with washer and two kliprings.

Step 5: Install right side cover.

- A) Insert bottom tabs of right side cover into base of sterilizer.
- B) Rotate top of side cover up into position and snap corner tab into corner slot.
- C) Install top two right side screws and tighten right rear bottom screw.
- D) Run a test cycle and check for proper operation.



WARNING

For effective grounding make sure star washer is located between screw head and tab of side cover when tightening right rear bottom screw.

