

M9® and M11® Air Valve Manifold Kit

002-10904-00 115 VAC
002-10904-01 230 VAC

Applies to Models:

M9 (-050/-053)

M11 (-050/-051/-053)

Special Tools:

T25 Torx Screw Driver



WARNING

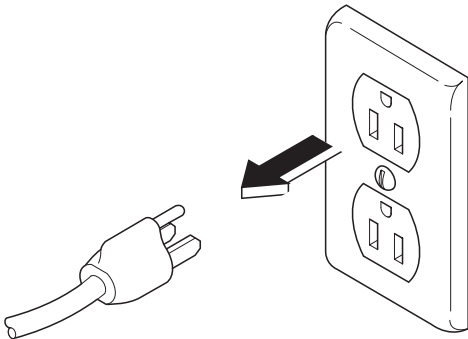
To prevent risk of shock always disconnect power before removing covers or performing any service procedure.



WARNING

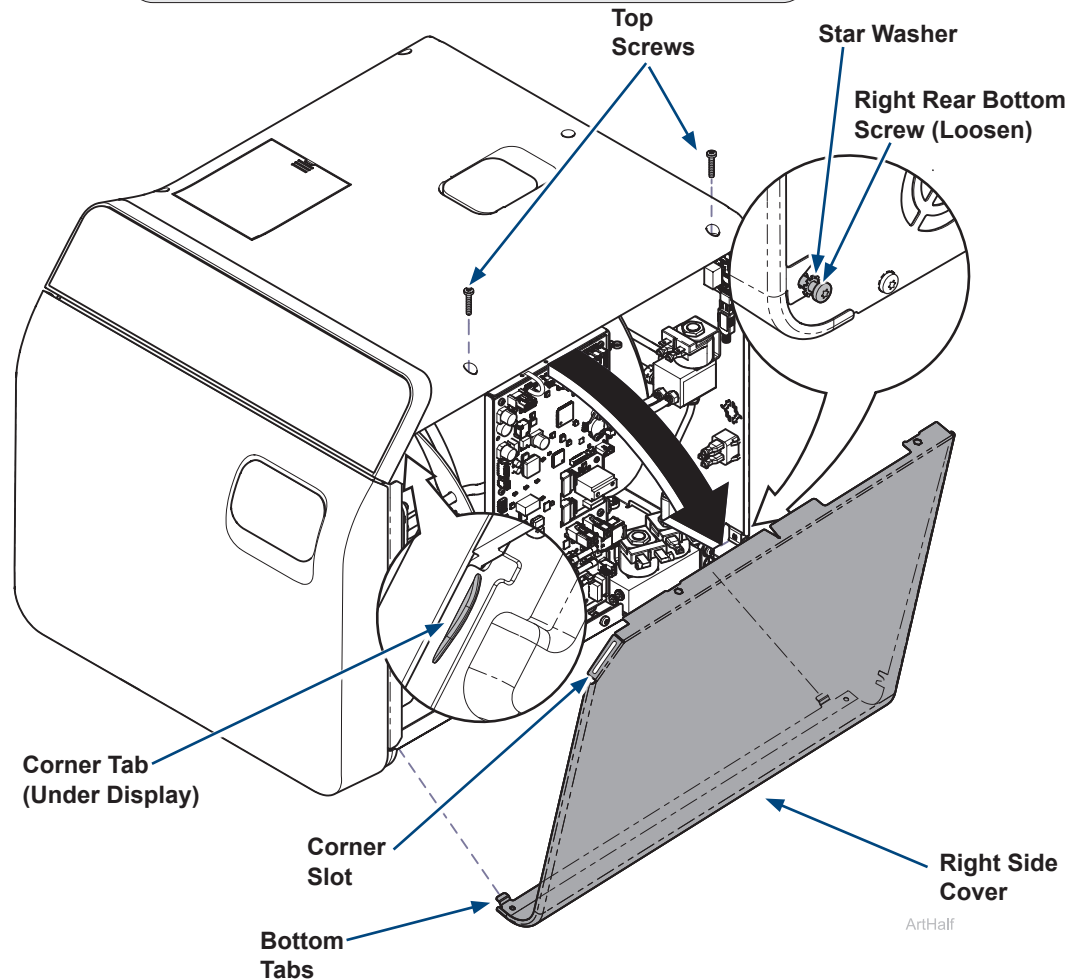
Allow to cool to ambient / room temperature prior to removing cover. Release pressure by pulling ring of pressure relief valve if necessary.

Step 1: Disconnect power.



Step 2: Remove right side cover.

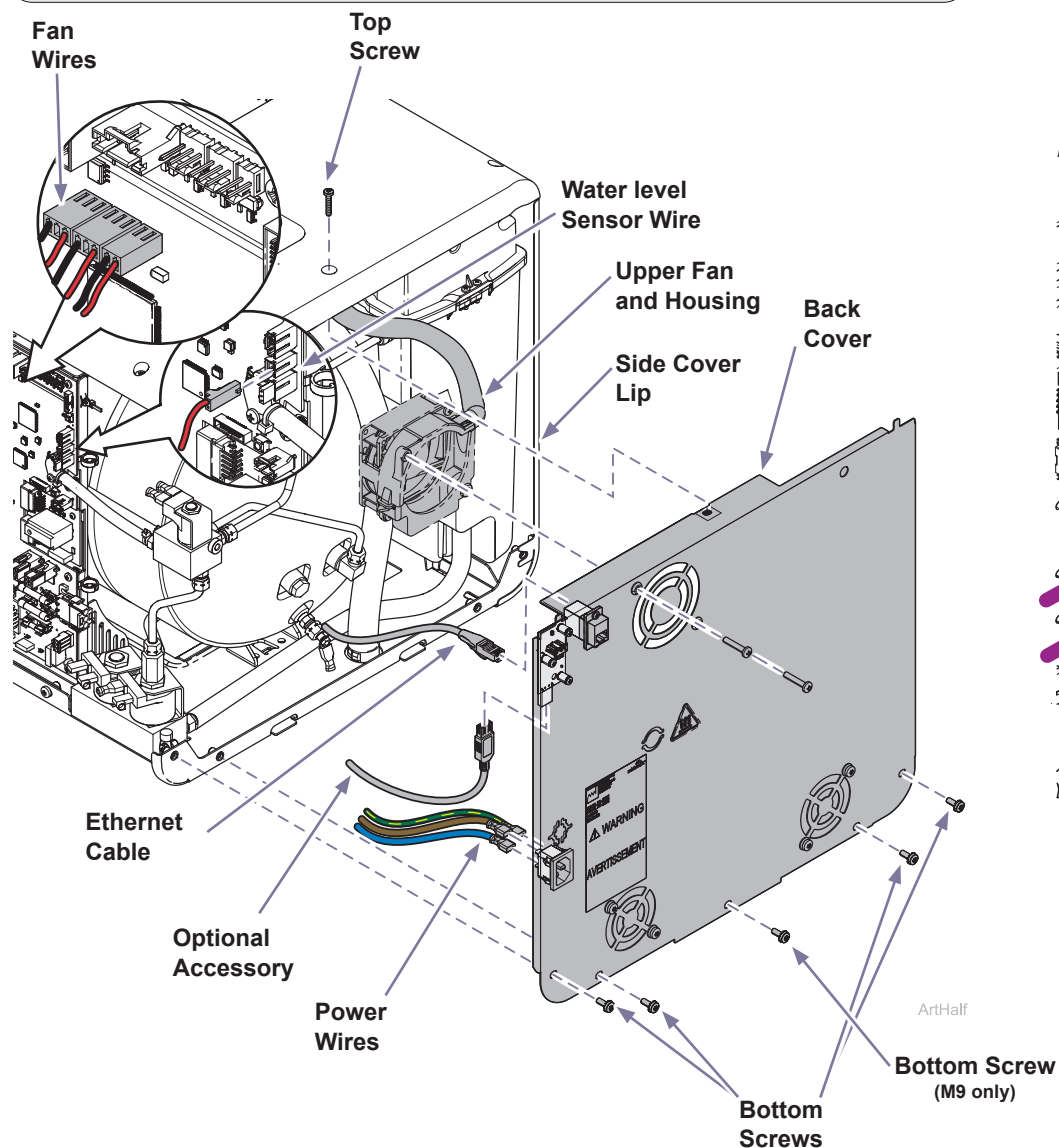
- Remove top two right side screws and loosen right rear bottom screw.
- Pull corner tab out of corner slot and rotate top of side cover down to free bottom tabs from base of sterilizer.



Step 3: Remove back cover.

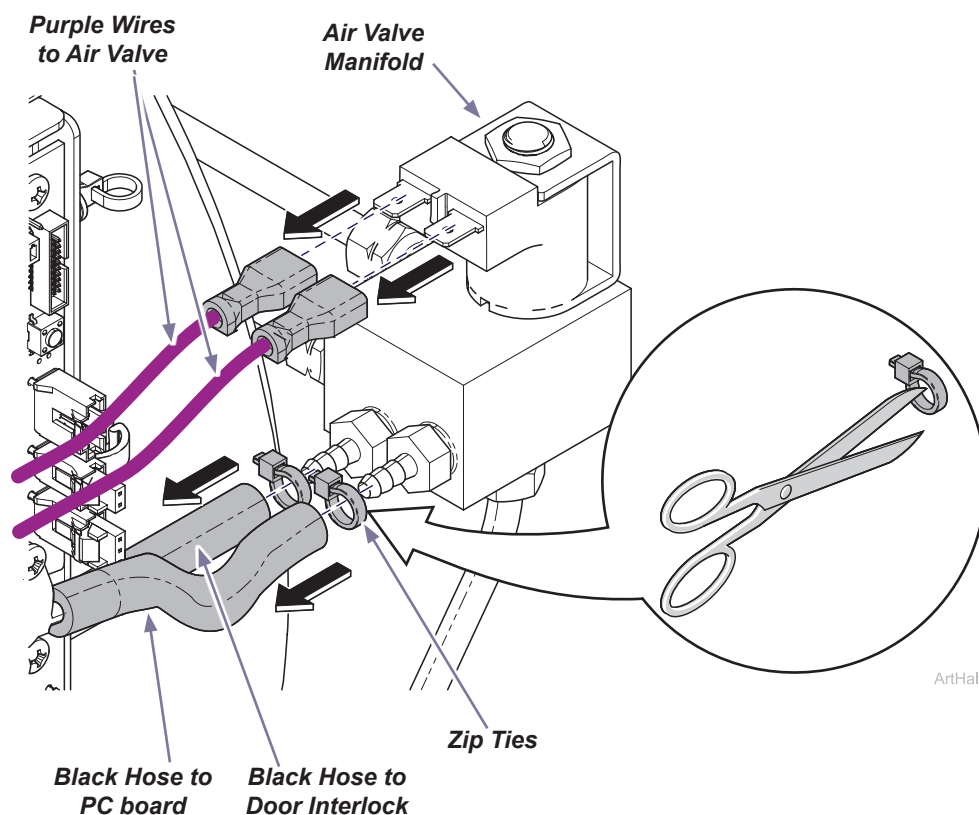
- A) Disconnect power wires, fan wires, water level sensor wire, ethernet cable and any optional accessories needed to remove back cover.
- B) Remove two screws securing upper fan and housing to back cover.
- C) Remove top back screw, back bottom screws and star washers.
- D) Remove back cover by pulling outward on top of back cover and sliding it away from side cover lip.

Note: Your sterilizer may be equipped with additional accessories that need disconnected to remove back cover.



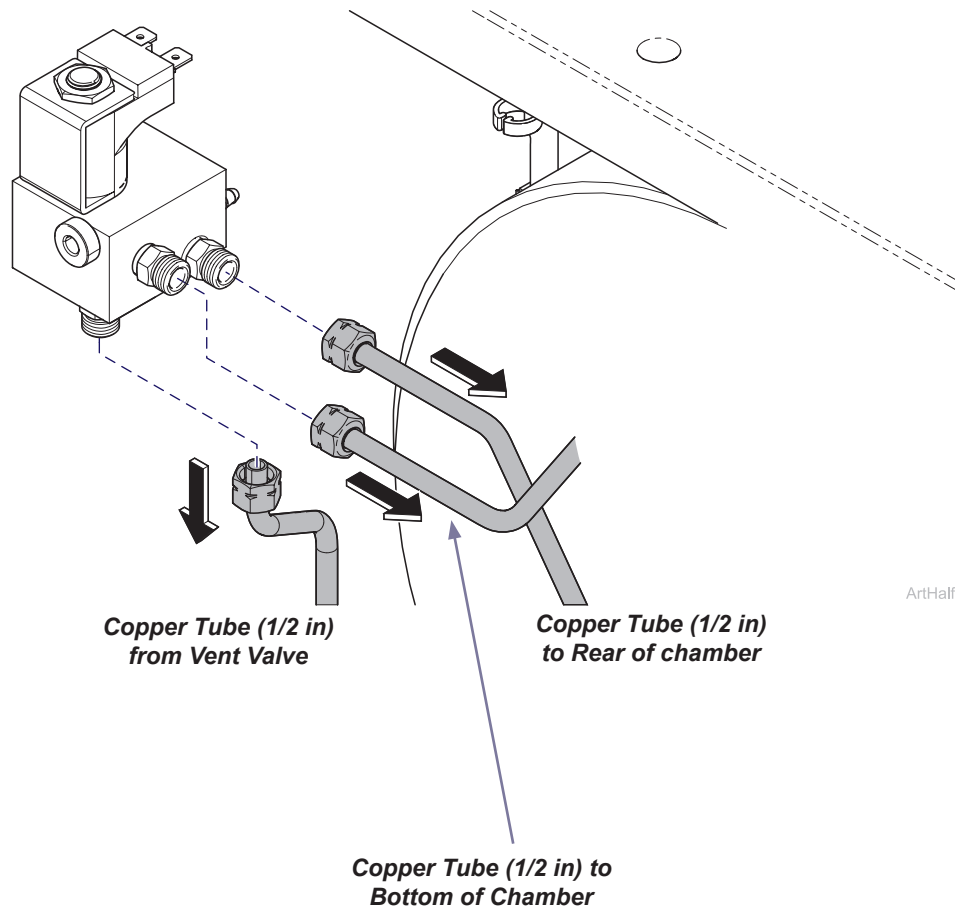
Step 4: Remove wires and hoses from valve manifold.

- A) Remove wiring spade connectors from solenoid valve coil.
- B) Cut zip ties and disconnect black hoses from side of the air valve manifold.



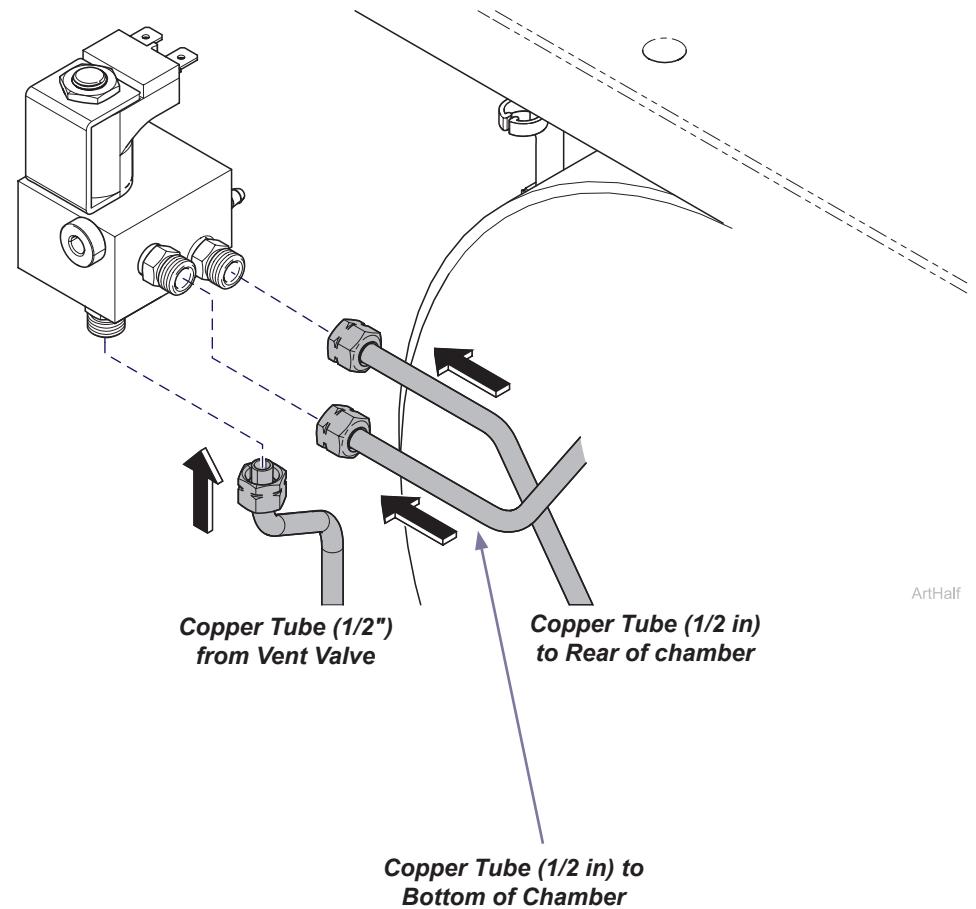
Step 5: Remove copper tubes from air valve manifold.

- A) Remove copper tubes from air valve manifold.
- B) Remove air valve manifold.



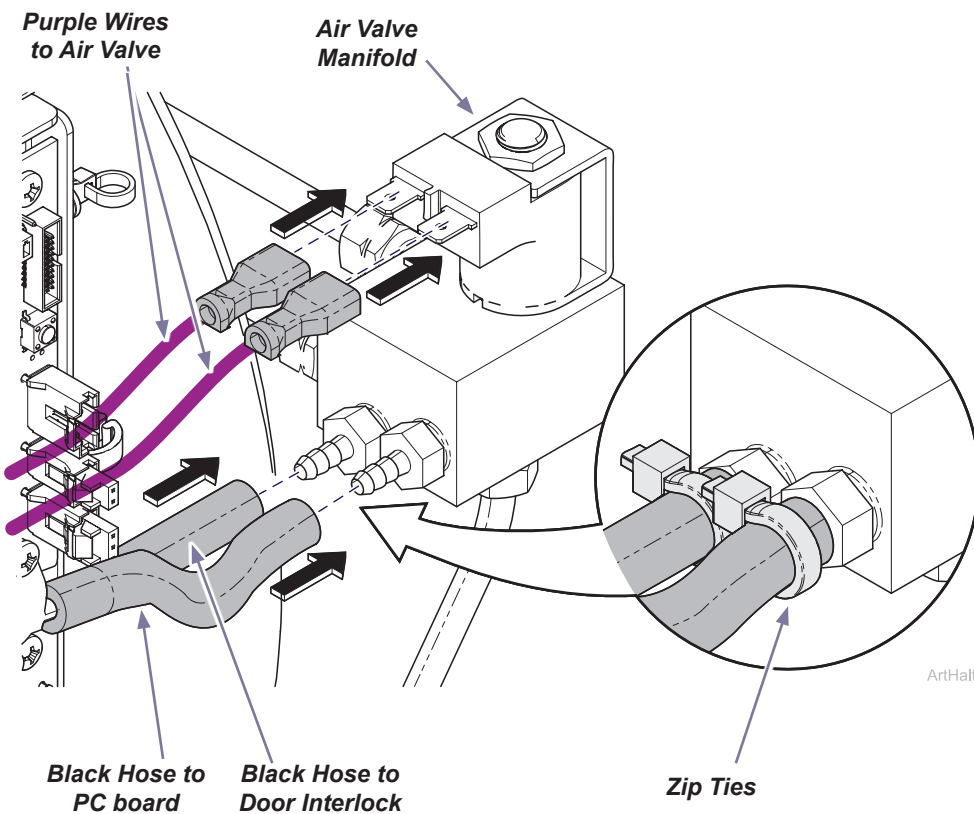
Step 6: Install copper tubes on new air valve manifold.

- A) Line up copper tubes to new air valve manifold.
- B) Install copper tubes on new air valve manifold.



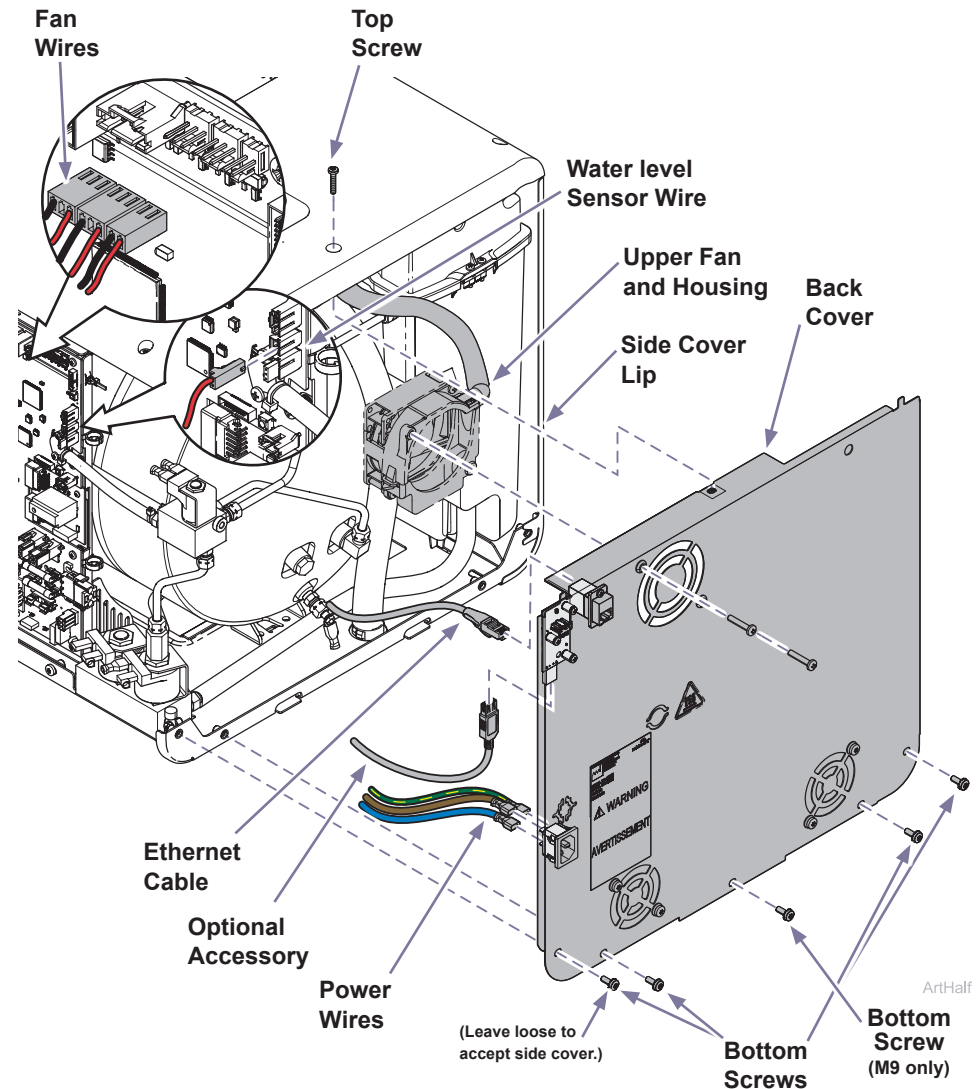
Step 7: Install wires and hoses from valve manifold.

- Install wiring spade connectors on solenoid valve coil.
- Connect black hoses to side of air valve manifold and secure with zip ties.



Step 8: Install back cover.

- Reinstall back cover by inserting bottom corner into side cover lip. Lift up top cover to position back cover underneath then slide back cover to the right behind rest of side cover lip.
- Secure upper fan and housing to back cover using two screws.
- Secure back cover with top screw and back bottom screws and star washers. Leave left most corner bottom screw loose to accept side cover.
- Connect power wires, fan wires, water level sensor wire, ethernet cable and any optional accessories disconnected in previous steps.



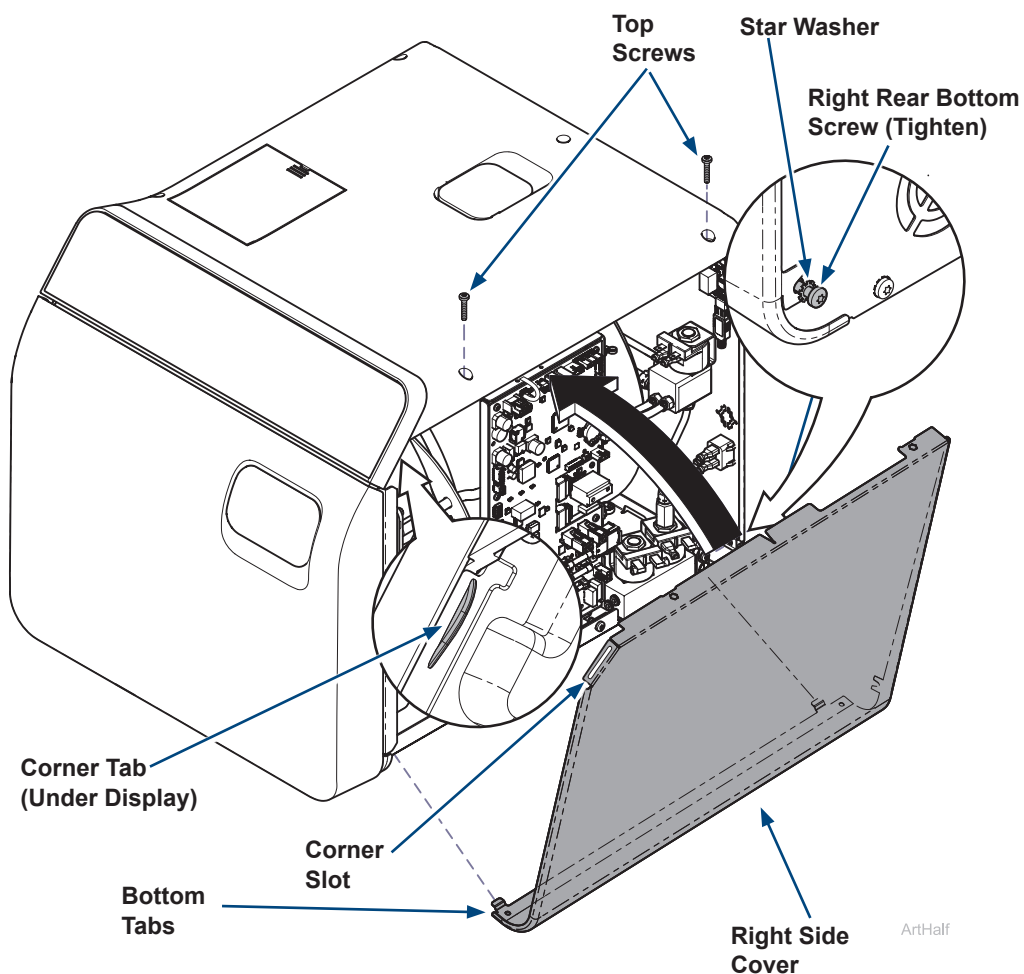
Step 9: Install right side cover.

- A) Insert bottom tabs of right side cover into base of sterilizer.
- B) Rotate top of side cover up into position and snap corner tab into corner slot.
- C) Install top two right side screws and tighten right rear bottom screw.
- D) Run a test cycle and check for leaks.



WARNING


For effective grounding make sure star washer is located between screw head and tab of side cover when tightening right rear bottom screw.



Step 10: Qualification Testing.

- A) Qualification Testing Cycles should be run after this repair is completed. (Refer to the user guide for details.)

If the sterilizer is connected to Smart View, a Request Qualification Testing should be setup on the sterilizer display following the below steps:

- Press the Menu Button .
- Select Settings.
- Select Service.
- Select Troubleshooting.
- Select Qualification Testing.
- Select Request Qualification Testing.
- Select Yes, Request Qualification Testing.

Note: Once qualification testing has been requested, this page will track testing status. The user interface will ask the user if the cycle they are attempting to run is a qualification cycle until the three (3) qualification cycles are completed.