

Dome Retaining Ring Kit [002-10309-00]

Contents:

Dome Retaining Ring.....	1
Valve Body Screws.....	2
Thread Adhesive.....	1

Special Tools:
none



Equipment Alert

The Unit must be depressurized before performing this procedure.

Note

Tubing is not shown for clarity only.



Equipment Alert

On some models the Dome Spring will become loose when Dome Retaining Ring screws are removed.

Step 1:

- Remove four dome retaining ring screws.
- Replace dome retaining ring in dome, aligning slot as shown.



Equipment Alert

Use new Valve Body Screws and apply thread adhesive to prevent loosening.

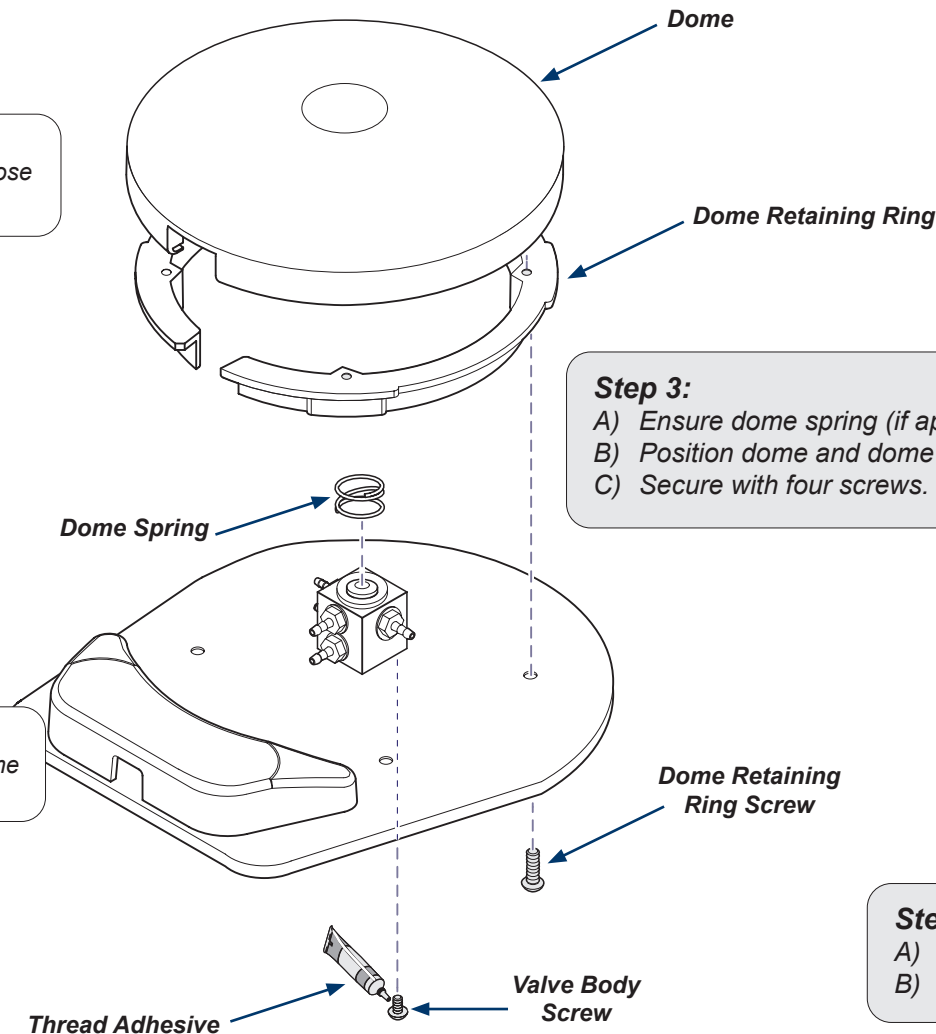


Equipment Alert

Removing both Valve Body Screws at the same time will allow internal components to become loose.

Step 2:

- Remove one valve body screw at a time.
- Apply thread adhesive to replacement screw.
- Install and tighten replacement screw.
- Repeat for the second screw.



Step 3:

- Ensure dome spring (if applicable) remains in place.
- Position dome and dome retaining ring assembly.
- Secure with four screws.

Step 4:

- Pressurize unit.
- Check for leaks.