

Foot Control Parts Kit [002-10980-00]

Contents:
 Dome Retaining Ring
 Valve Components
 Mounting Screws
 Thread Adhesive

Special Tools:
 none



Equipment Alert

The Unit must be depressurized before performing this procedure.

Note

Tubing is not shown for clarity only.



Equipment Alert

There are two types of valve component configurations. (see page two)
 They are interchangeable but must not be used in combination with each other.

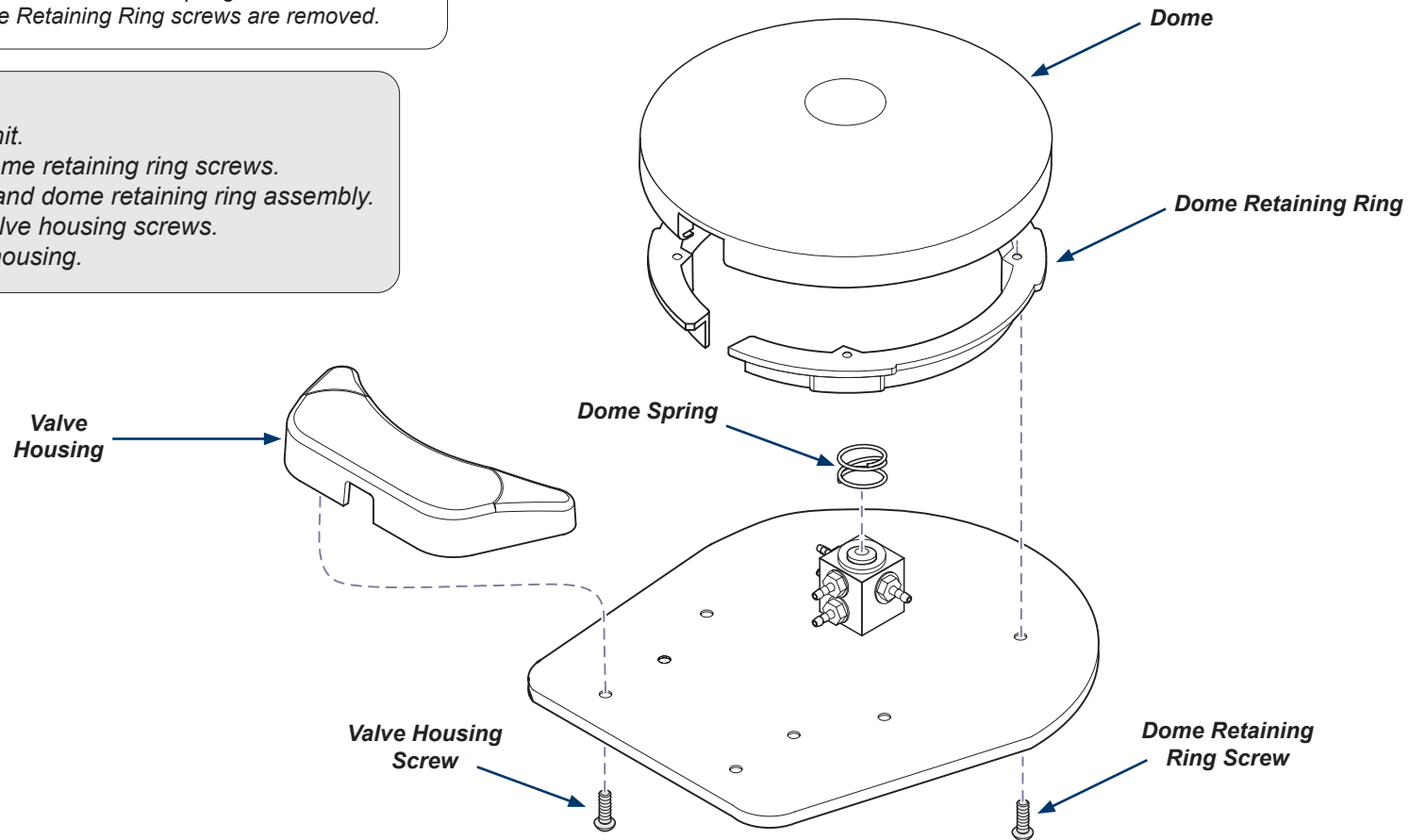


Equipment Alert

On some models the Dome Spring will become loose when Dome Retaining Ring screws are removed.

Step 1:

- Depressurize unit.
- Remove four dome retaining ring screws.
- Remove dome and dome retaining ring assembly.
- Remove four valve housing screws.
- Remove valve housing.





Equipment Alert

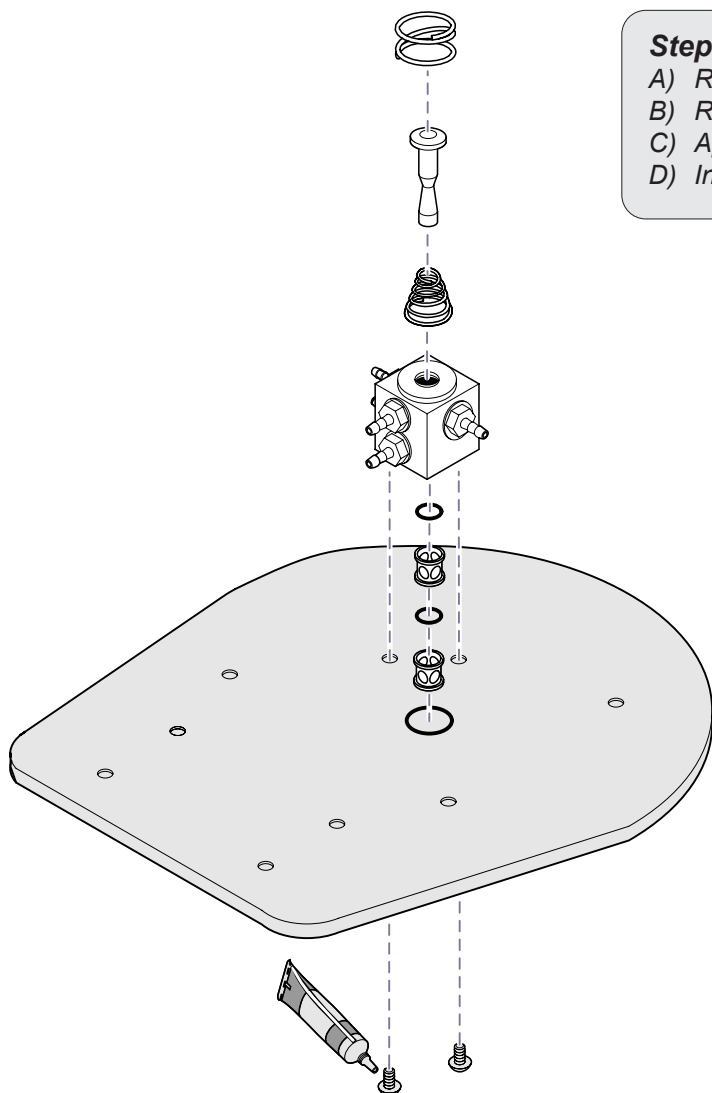
Use new Valve Body Screws and apply thread adhesive to prevent loosening.
Removing Valve Body Screws will allow valve components to become loose.



Equipment Alert

There are two types of valve component configurations.
They are interchangeable but must not be used in combination with each other.

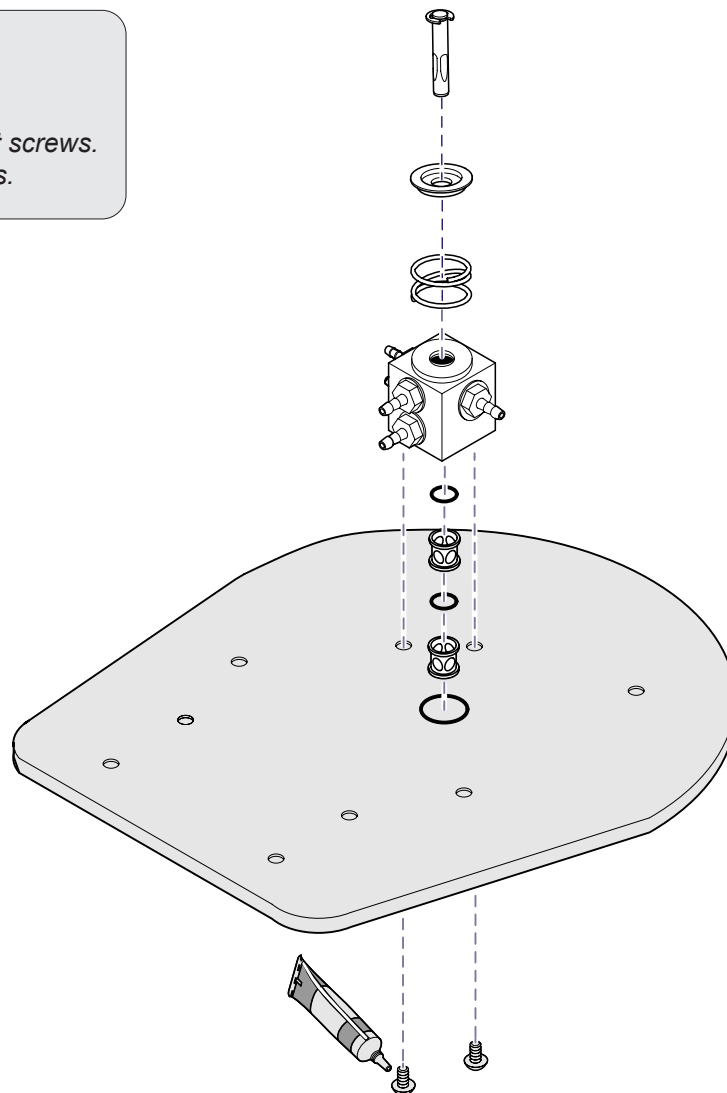
Configuration One



Step 2:

- A) Remove two valve body screws.
- B) Replace valve components as shown.
- C) Apply thread adhesive to replacement screws.
- D) Install and tighten replacement screws.

Configuration Two



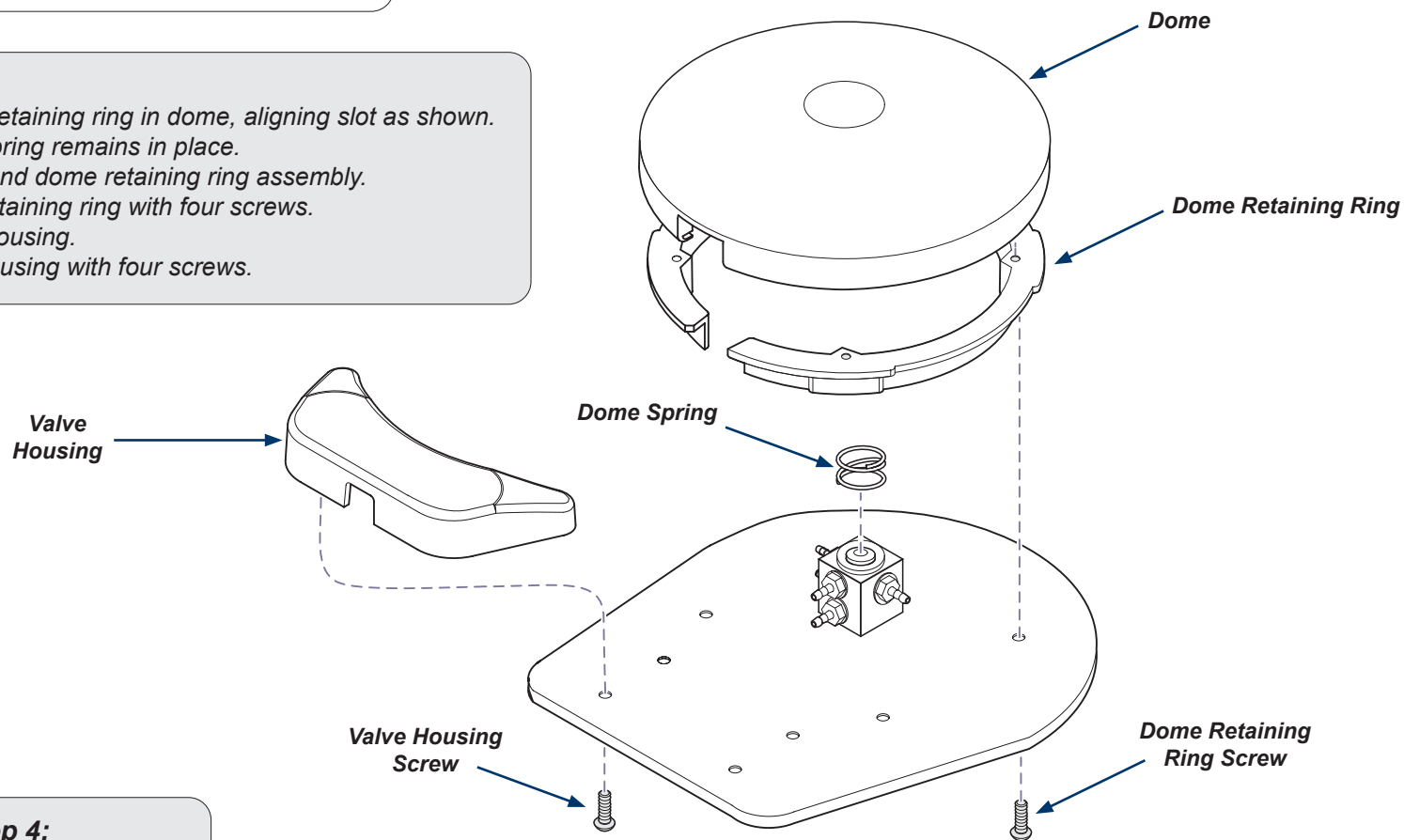


Equipment Alert

On some models the Dome Spring will be loose.
Ensure Dome Spring remains in place.

Step 3:

- A) Replace dome retaining ring in dome, aligning slot as shown.
- B) Ensure dome spring remains in place.
- C) Position dome and dome retaining ring assembly.
- D) Secure dome retaining ring with four screws.
- E) Position valve housing.
- F) Secure valve housing with four screws.



Step 4:

- A) Pressurize unit.
- B) Check for leaks.