

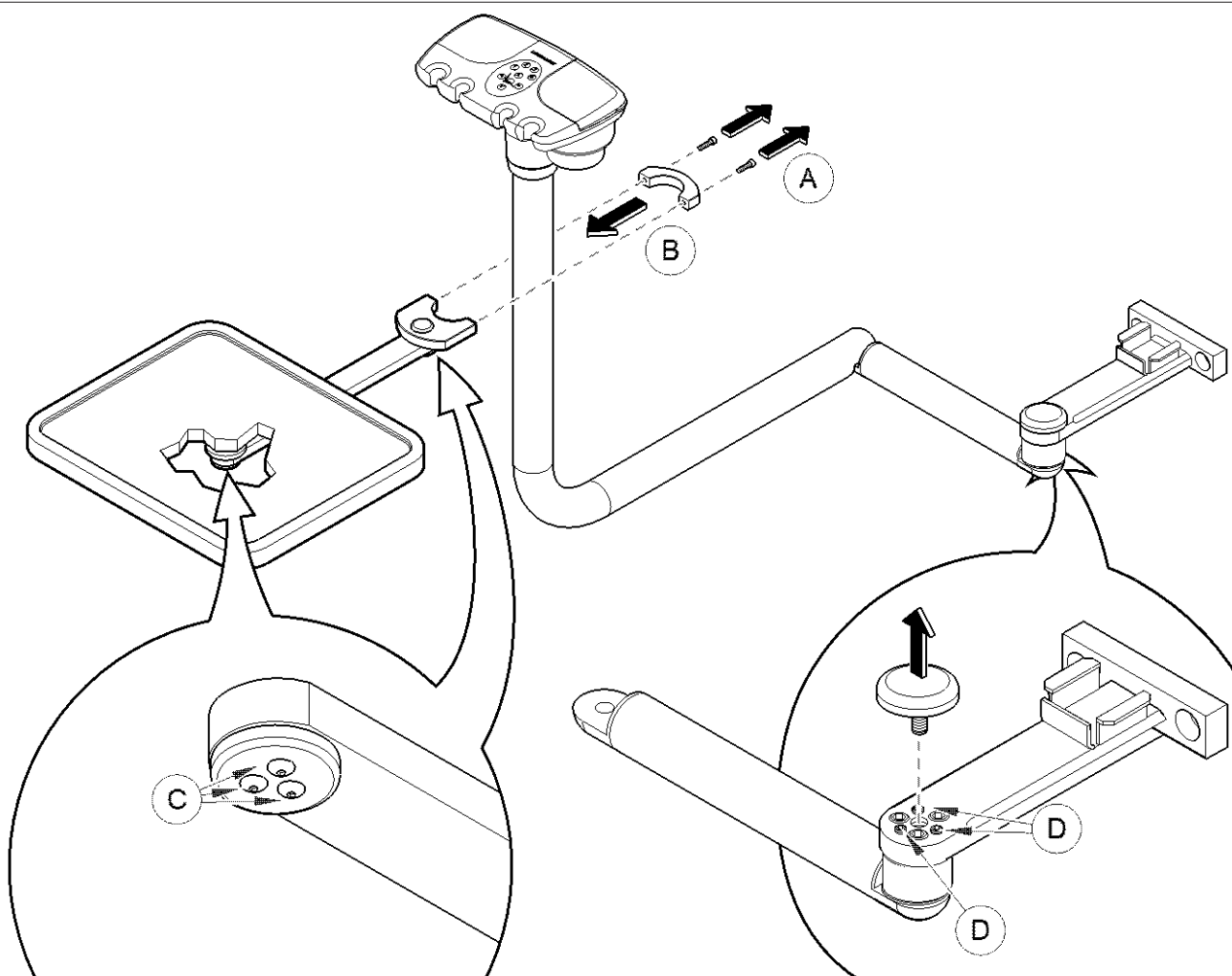
153657 Assistant's Instrument Tray 152361 Accessory Shelf for Carts Installation Instructions

Components:

Tray System,
12" (30.5 cm) x 14" (35.5 cm)..... 1
Installation Instructions..... 1

Required Tools:

Allen Wrenches (5 / 64", 1/8" and 5 / 32")
Level



A. Remove the socket head screws and separate the two halves of the tray clamp.

B. Place the tray and clamp assembly in position on the assistant's instrument arm assembly and install the socket head screws.

C. Check operation. If necessary, the amount of drag at the two pivot points on the tray arm can be adjusted by tightening or loosening the three socket head screws at each location.

D. Remove the cover and adjust the three leveling screws



Equipment Alert

Maximum shelf load limitation is 10 lbs. (4.5 kg).

Note

Check the instrument arm to assure it is level.
If necessary, adjust the three leveling screws.