

Add-a-Handpiece Kit (ProCenter Units) Installation Instructions



CONTENTS

Separate Instrument Holder.....	1
Instrument Holder Valve Installation.....	2
Adjustment Valve Installation.....	3
Kink Valve Installation.....	4
Handpiece Tubing Installation.....	5
Replace Instrument Holder.....	6
Tubing Diagrams	
Unit Lid.....	7
Unit Base.....	8

SEPARATE INSTRUMENT HOLDER

- (1) Turn air manual shut-off valve [in J-box] OFF.
- (2) Press air button of syringe until **all** residual air pressure is removed from system.



EQUIPMENT ALERT

Residual air pressure **will** eject the plunger from the master ON/OFF switch valve. Be sure **all** air pressure is removed from the system before performing the following step.

- (3) Remove six screws (1, Figure 1) and two screws (2); then partially separate front cover (3) and remove master switch (4).



EQUIPMENT ALERT

Be sure plunger stays in valve (5) when performing the following step.

- (4) Slide valve (5) out of instrument holder (6).
- (5) Remove two screws (7) and partially separate instrument holder (6) from bottom housing (8).

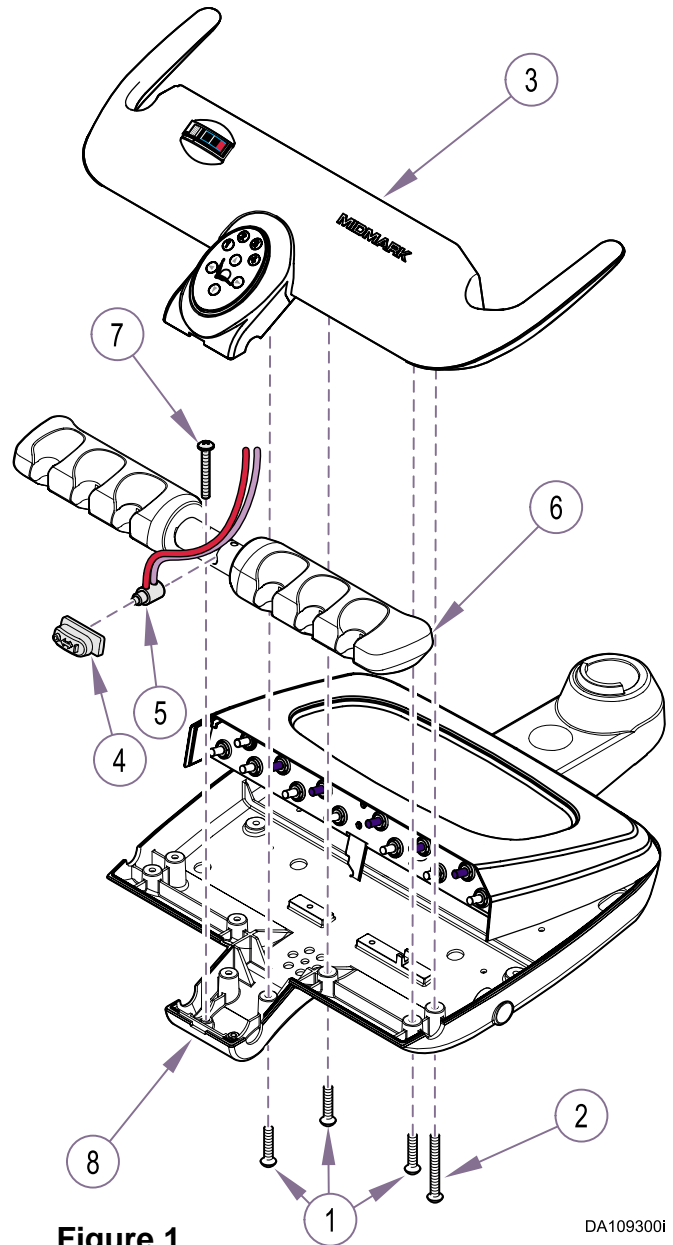


Figure 1

DA109300i

**INSTRUMENT HOLDER
VALVE INSTALLATION**

- (1)** Remove four screws (1, Figure 2) and cover (2).
- (2)** Remove set screw (3) and partially separate connector (4).
- (3)** Remove screw (5) and plug (6) from new handpiece position.
- (4)** Slide valve (1, Figure 3) into actuator block (2) with fittings angled toward connector (3).
- (5)** Position valve actuator lever (4) in slot of instrument holder; then install actuator block (2) and secure with two screws (5).
- (6)** Feed 1/8" purple tubing (6) [from new valve] thru connector (3).



EQUIPMENT ALERT

Connect & route tubing exactly as shown in Figure 3. It will be necessary to reposition existing tee fitting to install correctly. Trim all excess tubing between valves. Failure to do so may cause tubing to kink, preventing proper operation.

- (7)** Cut 1/8" red tubing (7) [**connecting existing valve(s)**] and insert tee fitting (8); then connect 1/8" red tubing (9) [**from new valve**].
- (8)** Push connector (4, Figure 2) into holder and secure with set screw (3).
- (9)** Install cable ties as necessary to keep tubing from impeding proper operation.
- (10)** Install set screw (7) until flush w/holder.
- (11)** Replace cover (2) and secure with four screws (1).

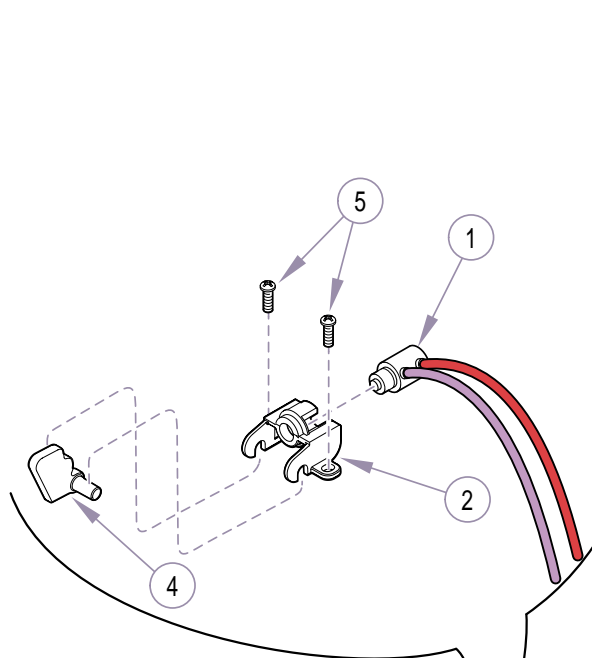


Figure 2

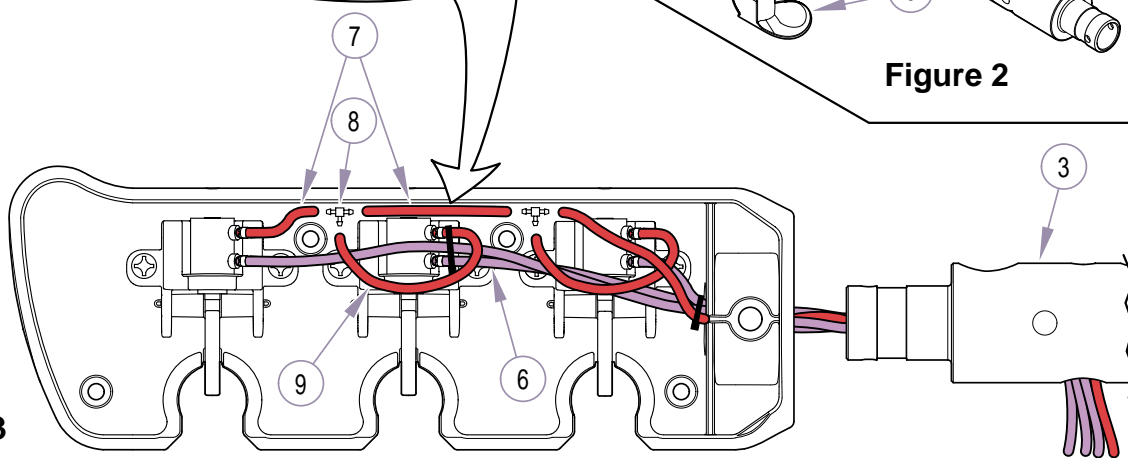


Figure 3

DA109500i

ADJUSTMENT VALVE INSTALLATION

- (1) Loosen six screws (1, Figure 4) [**top three screws on two hinges**]; then remove three screws (2) and lower lid cover (3).
- (2) Remove two hole plugs (1, Figure 5); then install handpiece label (2).
- (3) Insert water control valve (3) and air control valve (4) thru lid cover; then secure valves with trim rings (5).
- (4) Remove one plug (6) and one gasket (7) [each] from water manifold (8) and air manifold (9).
- (5) Install 1/8" barb fitting (10) and one gasket (7) in water manifold (8).

- (6) Install 1/4" barb fitting (11) and one gasket (7) in air manifold (9).
- (7) Install uni-clamp (12) on 1/8" blue tubing (13) from middle fitting of water control valve (6); then connect tubing to water manifold (8) and secure uni-clamp.
- (8) Connect 1/4" clear tubing (14) to air manifold (9).
- (9) Route remaining tubing from water & air control valves thru hole in lid cover as shown.
- (10) Install knobs (15) onto water & air control valves; then tighten set screws to secure.
Blue knob: water control valve (3)
Shadow knob: air control valve (4)
- (11) Raise lid cover (3, Figure) into position and secure with three screws (2); then tighten six screws (1).

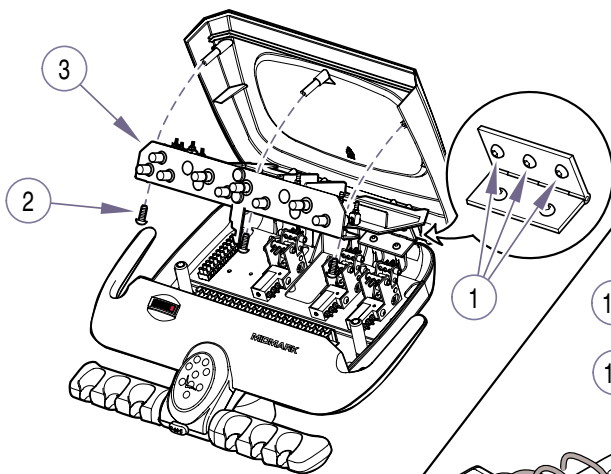


Figure 4

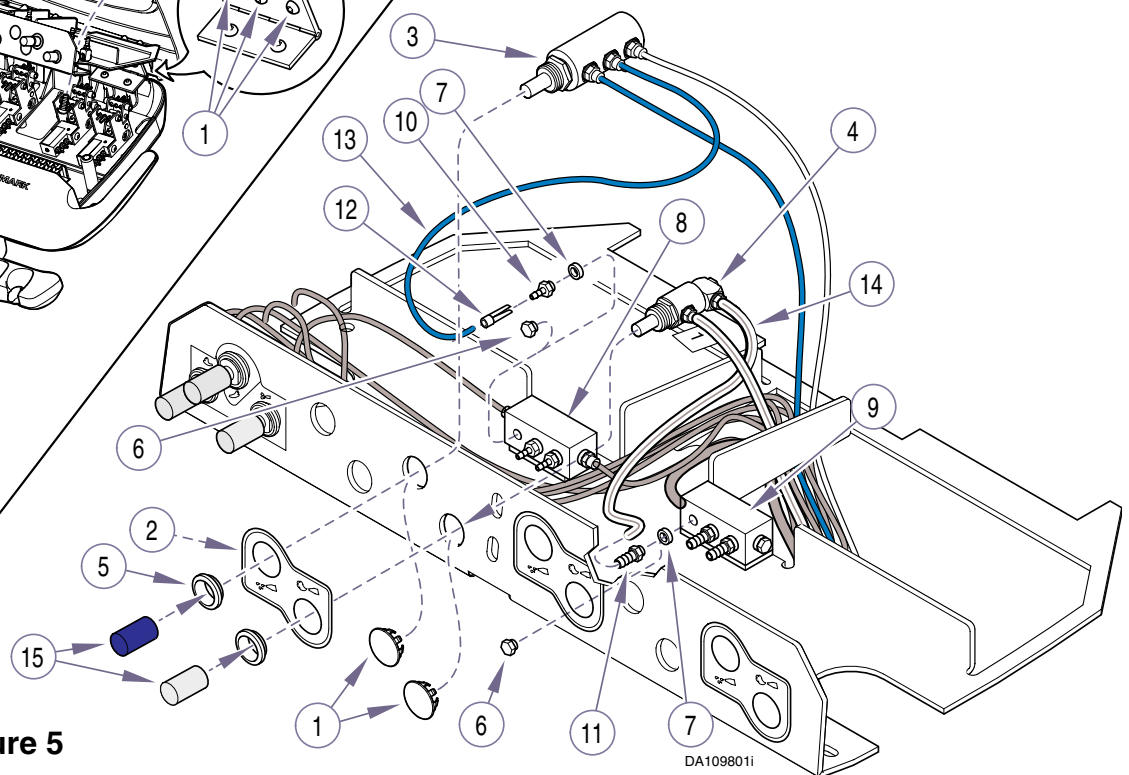


Figure 5

DA109801i

KINK VALVE INSTALLATION



EQUIPMENT ALERT

When connecting 1/8" tubing to metal barb fittings, always use uni-clamps to secure connections. Uni-clamps are not necessary when using plastic fittings.

- (1) Connect 1/8" purple tubing (1, Figure 6) **[from new instrument holder valve]** to kink valve (2) as shown.
- (2) Connect 1/8" white tubing (3) **[from new water control valve]** to kink valve (2) as shown.
- (3) Connect 1/8" orange tubing (4) **[shipped w/kit]** to kink valve (2) as shown.

- (4) Cut 1/8" orange tubing (5) **[connecting existing kink valves]** and insert tee fitting (6); then connect 1/8" orange tubing (4) from kink valve (2).
- (5) Position kink valve (2) and secure with screw (7).
- (6) Connect 1/8" blue tubing (8) **[from new water control valve]** to kink valve (2) as shown.
- (7) Connect 1/4" clear tubing (9) **[from new air control valve]** to kink valve (2) as shown.
- (8) Connect 1/8" green tubing (10) **[shipped w/kit]** to kink valve (2) as shown.
- (9) Cut 1/8" green tubing (11) **[connecting existing kink valves]** and insert tee fitting (12); then connect 1/8" green tubing (10) from kink valve (2).

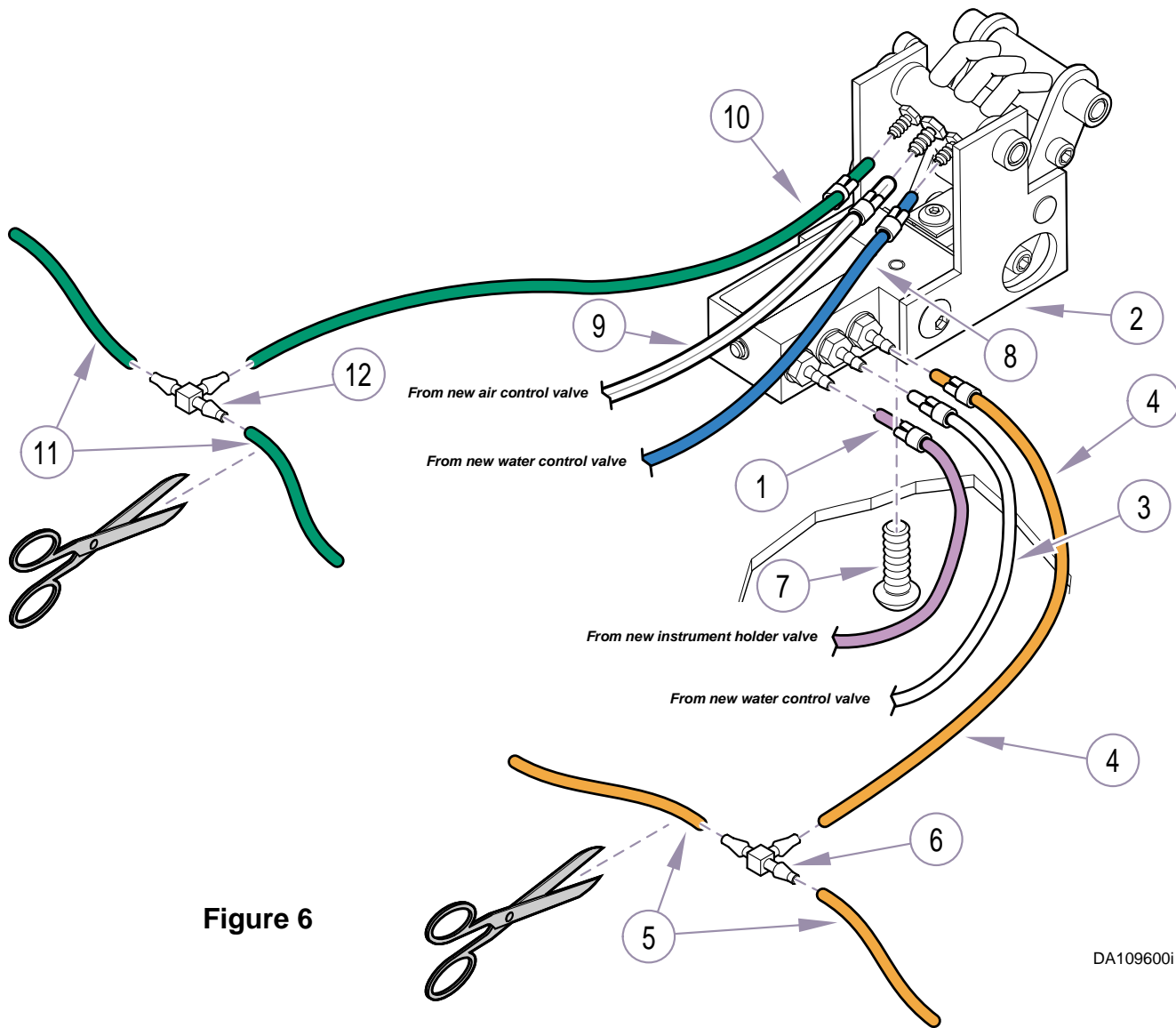


Figure 6

DA109600i

HANDPIECE TUBING INSTALLATION

- (1) Remove air/oil separator bottle (1, Figure 7).
- (2) Remove screw (2), washer (3), lockwasher (4), and diffuser (5).
- (3) Partially separate lid (6); then remove one plug (7) and install 1/4" barb fitting (8).
- (4) Position lid (6) and hold diffuser (5) in place; then secure with screw (2), washer (3), and lockwasher (4).
- (5) Install air/oil separator bottle (1).
- (6) Connect 1/4" clear tubing (9) [shipped w/kit] to barb fitting (8).
- (7) Route handpiece tubing up thru hole in housing.

- (8) Connect 1/4" clear tubing (1, Figure 8) [from air/oil separator] to 1/4" grey handpiece tube (2) as shown.
- (9) Connect 1/8" grey handpiece tube (3) to kink valve as shown.
- (10) Connect 1/8" grey handpiece tube (4) to kink valve as shown.
- (11) Connect 1/4" clear tube (5) [from new handpiece tubing] to kink valve as shown.
- (12) Cut 1/8" clear tubing (6) connecting existing handpiece tubing and insert tee fitting (7); then connect 1/8" clear tubing (8) [from new handpiece tubing].

ATTENTION!

If installing illuminated handpiece tubing, refer to separate installation sheet for power supply connections.

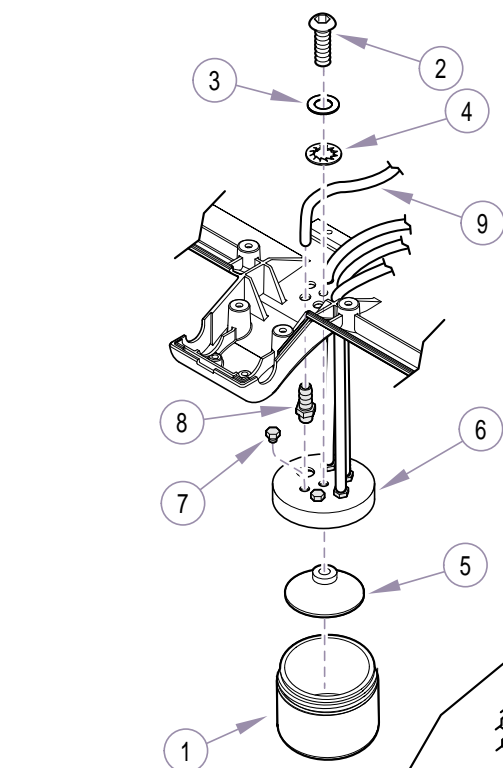


Figure 7

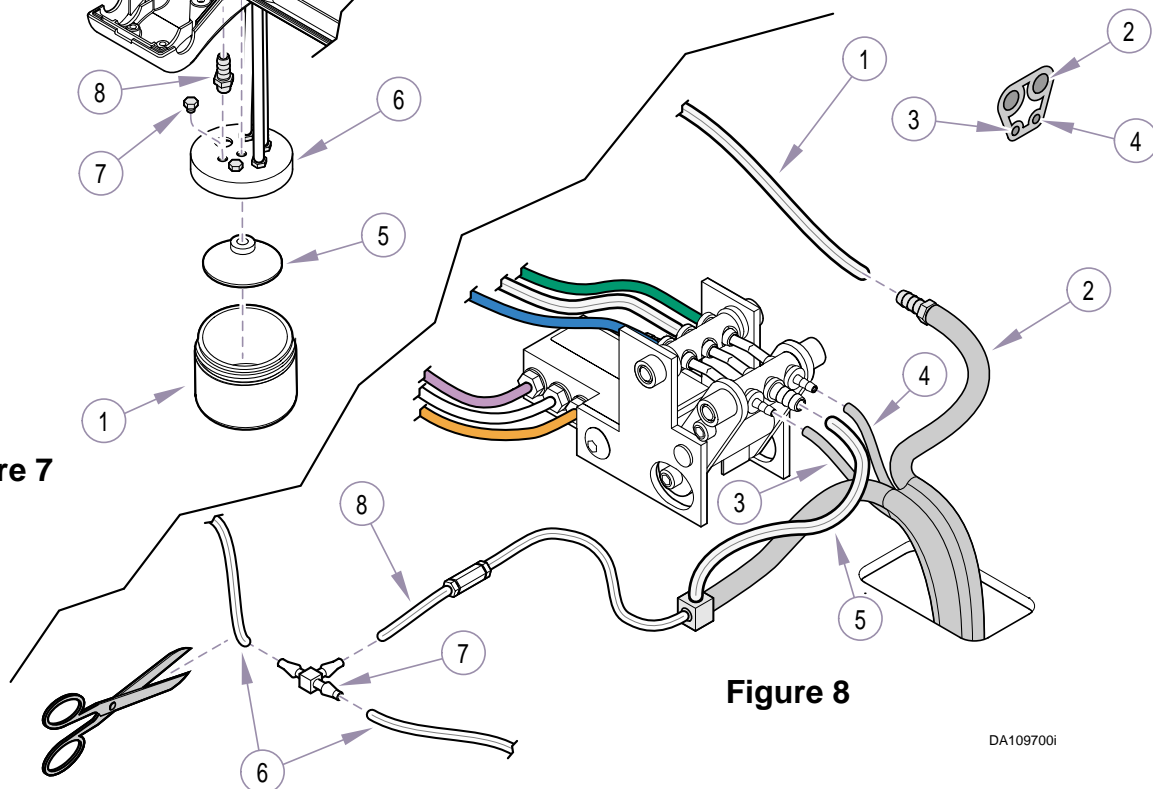


Figure 8

DA1097001

REPLACE INSTRUMENT HOLDER

- (1)** Secure instrument holder (1, Figure 9) to bottom housing (2) with two screws (3).



EQUIPMENT ALERT

Be sure plunger is in valve (4) when performing the following step.

- (2)** Slide valve (4) into instrument holder (1).
- (3)** Position master switch (5) and front cover (6) on bottom housing (2); then secure with two screws (7) and six screws (8).



EQUIPMENT ALERT

Secure internal tubing with cable ties to allow proper operation of kink valves.

- (4)** Turn air manual shut-off valve **[in J-box]** ON; then turn master ON/OFF switch ON and check for proper operation.

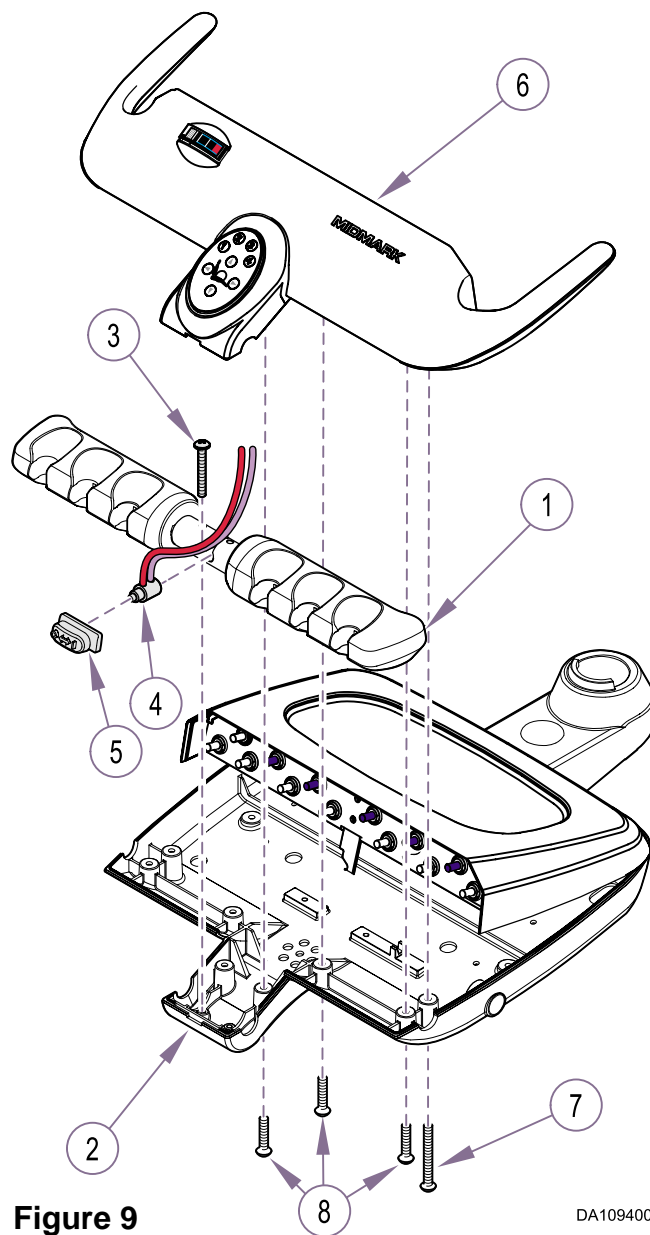
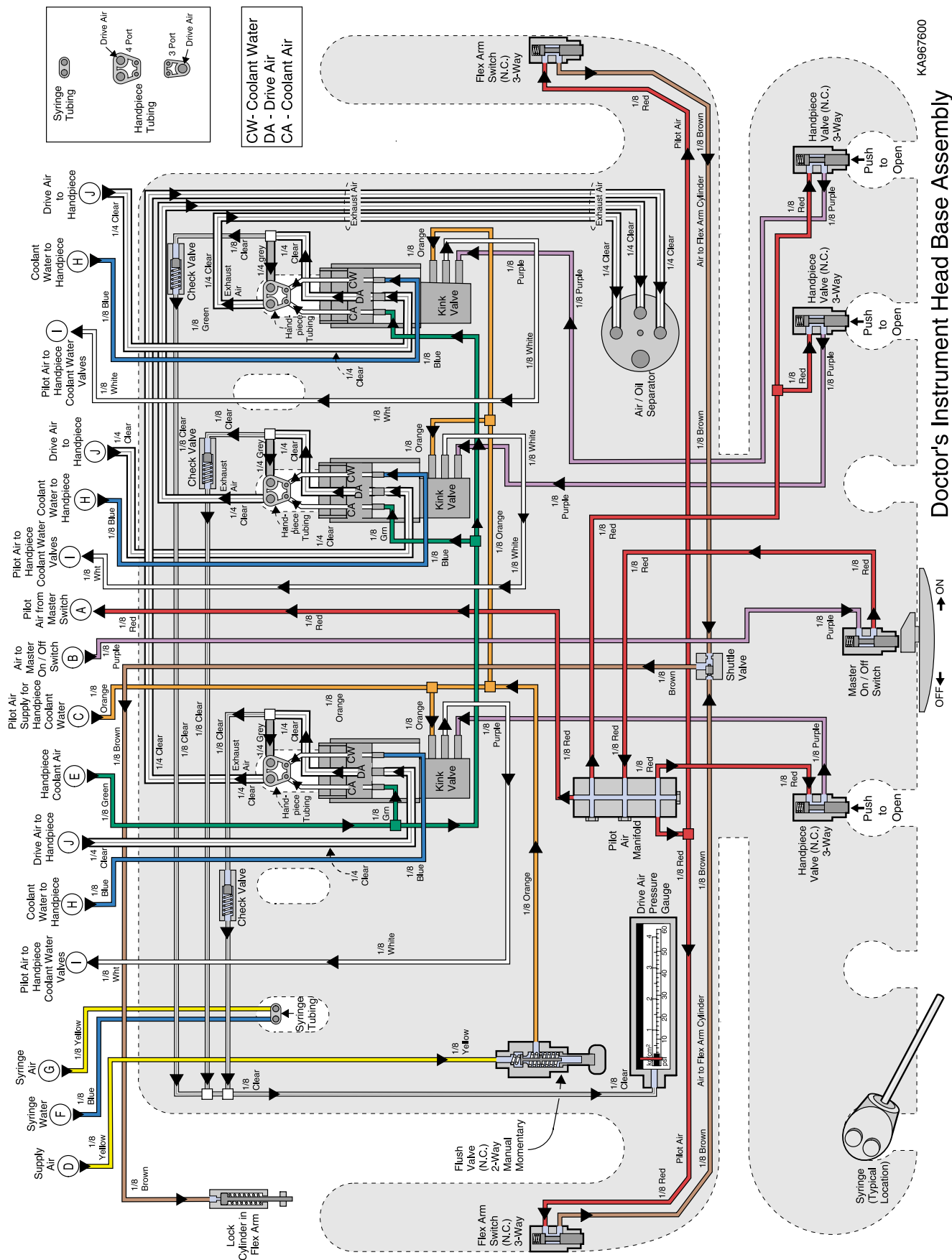


Figure 9

DA1094001

ADD-A-HANDPIECE KIT



KA967600

Doctor's Instrument Head Base Assembly