

## Caster Base [9A330]

**Contents:**  
Installation ..... 1

**Special Tools:**  
4" x 4" x 24" support

### **Intended Use:**

To make exam chair mobile.

### **Restrictions:**

Do not install casters on chairs with rotational base.

Do not use in conjunction with:

Knee Crutches (9A144 / 9A208 / 9A410 / 9A411)

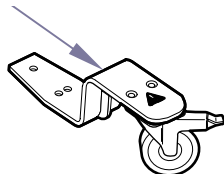
24" Wide Foot Pad (9A337 / 9A341 / 9A344 / 9A345 / 9A421)



### **Caution**

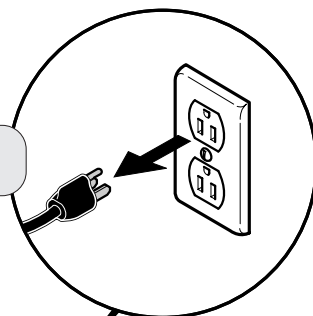
To prevent injury, always lock casters before performing any procedure.

Serial Number

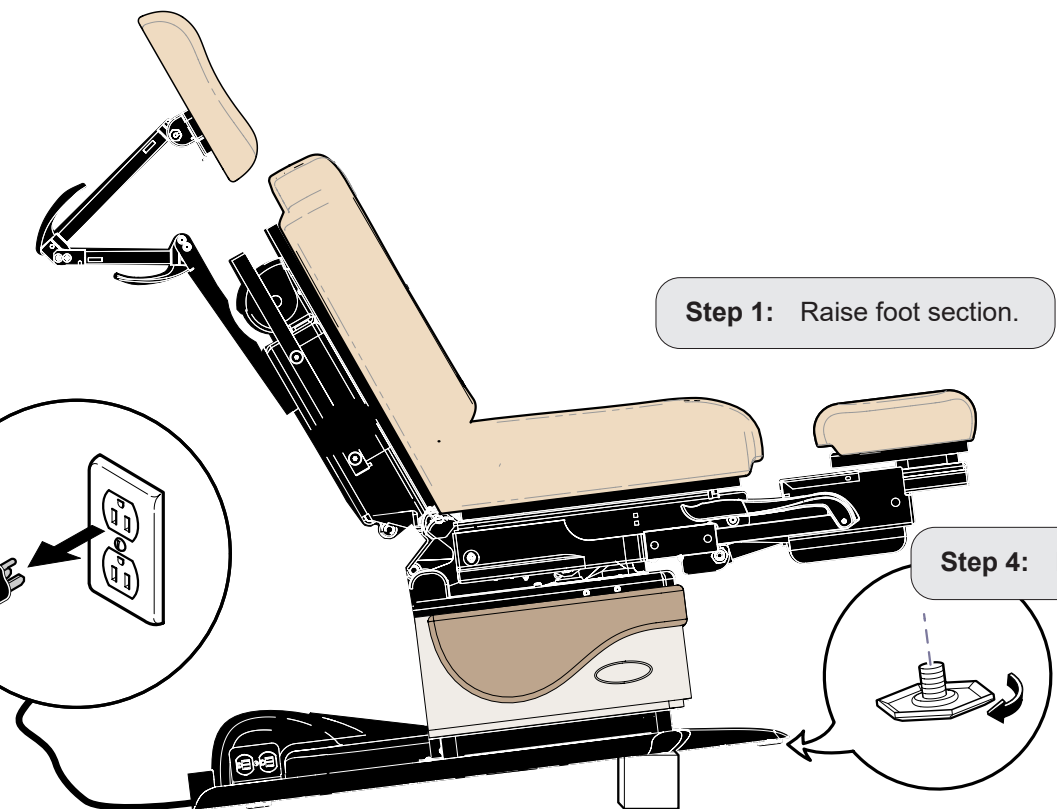


MA646700i

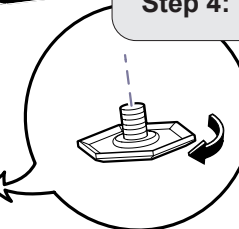
**Step 2:** Unplug power cord.



**Step 1:** Raise foot section.



**Step 4:** Remove leveling screws.



MA645600revB



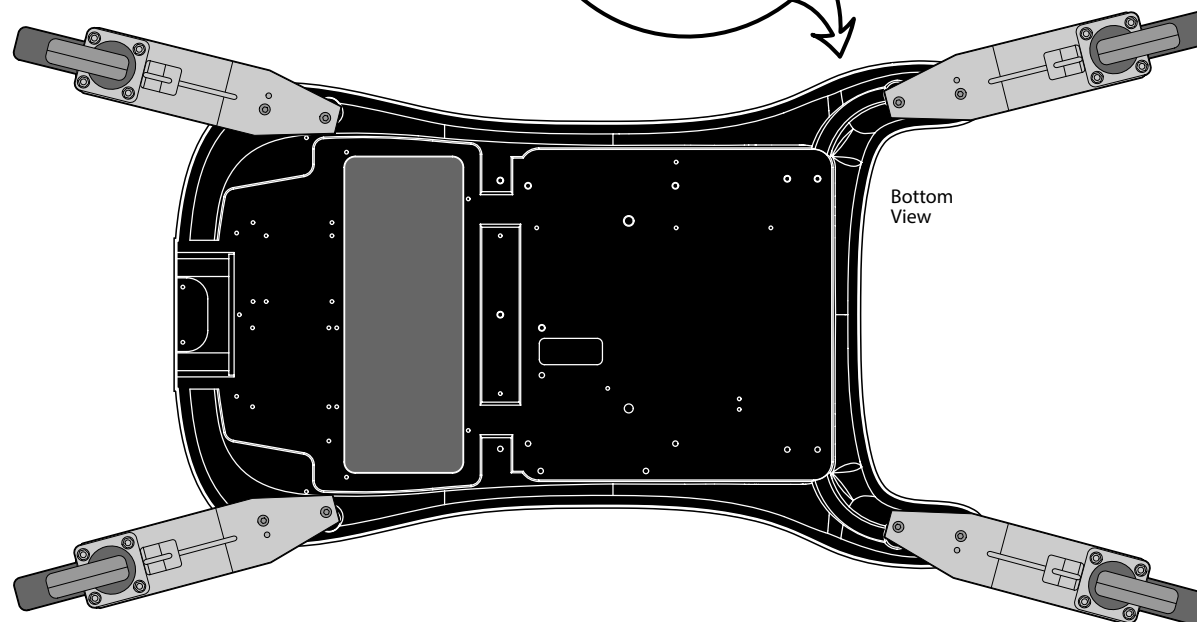
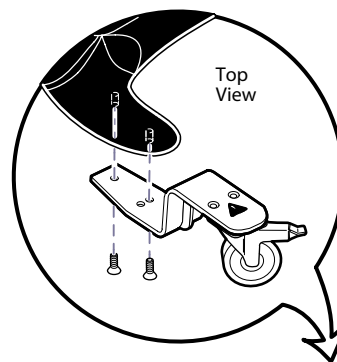
### **Caution**

To prevent injury, use an assistant when performing this step.

**Step 3:** Lift foot end of chair and position support under base.

**Step 5:** Position foot end casters and secure with two screws per caster.

*Note: Casters must be angled outward as shown.*

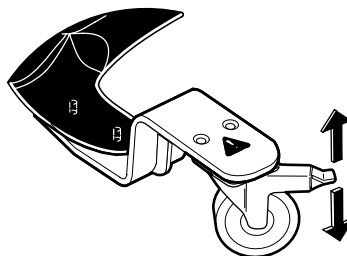


**Caution**

*To prevent injury, lock foot end casters before performing Step 6.*

**Step 6:** Position support under head end of base. Install head end casters (same procedure)

MA645701i



**To UNLOCK caster(s)...**  
*Lift up on brake pedal.*

**To LOCK caster(s)...**  
*Press down on brake pedal.*