

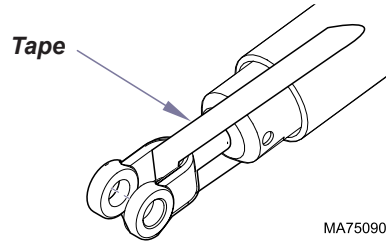
Back Actuator Kit [002-0795-00]

Components:

Back Actuator 1
Ground Wire 1
Set Screws 2
Ground Screw 1

Special Tools:

none



MA7509001



Equipment Alert

Do not remove tape from new actuator until instructed to do so. Failure to comply will allow the actuator shaft to rotate, resulting in misalignment of the internal limit switches.

Removal

Step 1: Disconnect back actuator wires from choke harness. Disconnect ground wire (*early models only*). Pull actuator wire up thru chair.

Note: Remove cable ties and wire clamps as necessary.

Installation

Step 4: Route actuator wire down thru chair. Connect actuator wires to choke harness. [brown to brown] [blue to blue] Connect ground wire.

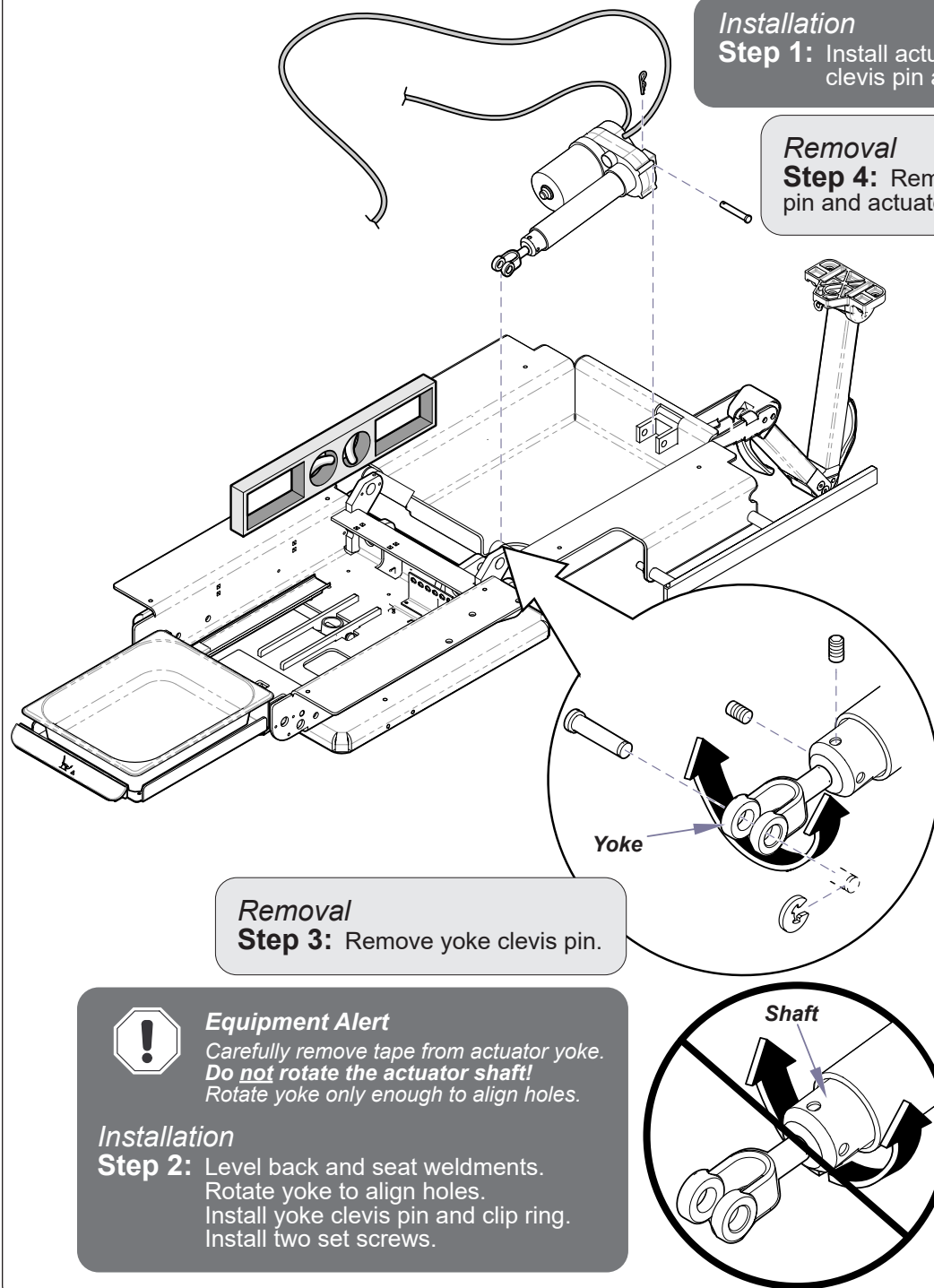
Note: Replace all cable ties and wire clamps.

Installation

Step 3: Route back limit switch harness and connect to junction board.

Removal


Step 2: Disconnect back limit switch harness [3] from junction board.



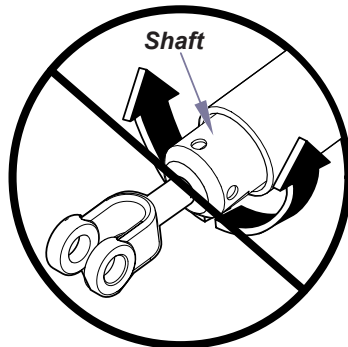
Installation
Step 1: Install actuator, base clevis pin and cotter pin.

Removal
Step 4: Remove base clevis pin and actuator.

Removal
Step 3: Remove yoke clevis pin.

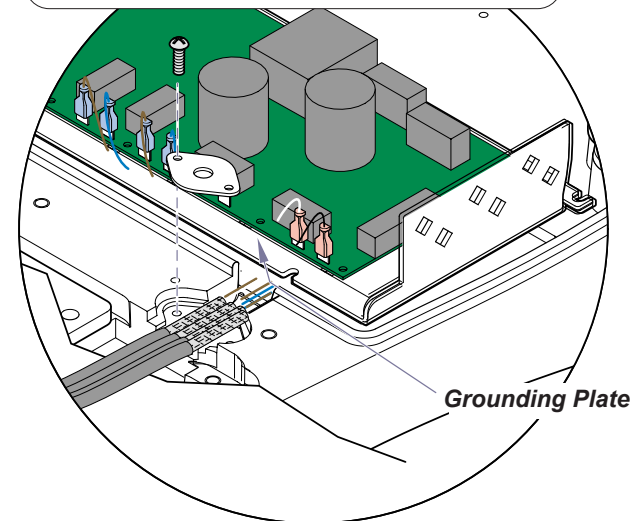
 **Equipment Alert**
 Carefully remove tape from actuator yoke. **Do not rotate the actuator shaft!** Rotate yoke only enough to align holes.

Installation
Step 2: Level back and seat weldments. Rotate yoke to align holes. Install yoke clevis pin and clip ring. Install two set screws.



Grounding Instructions

Models w/Grounding Plate:
 To ensure proper ground, the metal braided insulation on the actuator wires must be in direct contact with the grounding plate.



Models w/o Grounding Plate:
 Push back the metal braided insulation on actuator wires. Connect the ground wire (provided) as shown. Connect ground wire to base casting w/screw (provided).

