

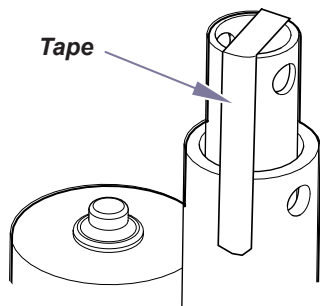
Tilt Actuator Kit [002-0882-00]

Components:

Tilt Actuator..... 1
Ground Wire..... 1

Special Tools:

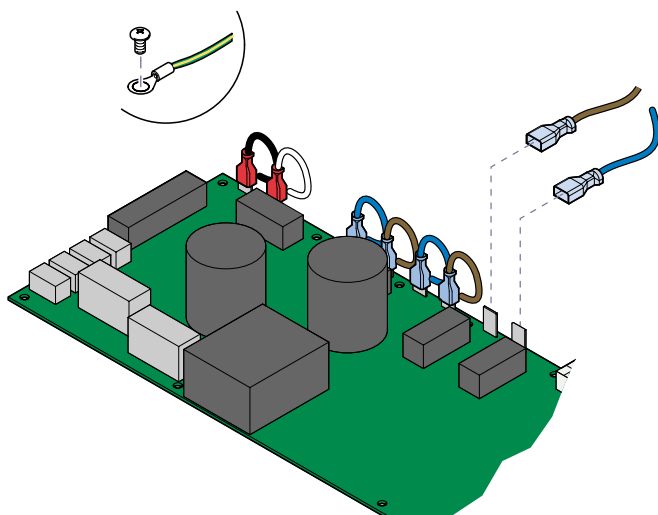
none



Equipment Alert

Do not remove tape from new actuator until instructed to do so. Failure to comply will allow the actuator shaft to rotate, resulting in misalignment of the internal limit switches.

Early models only:



Removal

Step 1: Disconnect tilt actuator wires from PC board (J7 and J8).
Disconnect ground wire (early models only).
Pull actuator wire up thru chair.

Note: Remove cable ties and wire clamps as necessary.

Installation

Step 5: Route actuator wire thru chair.
Connect actuator wires to PC board.
[brown - J7] [blue - J8]
Connect ground wire (early models).

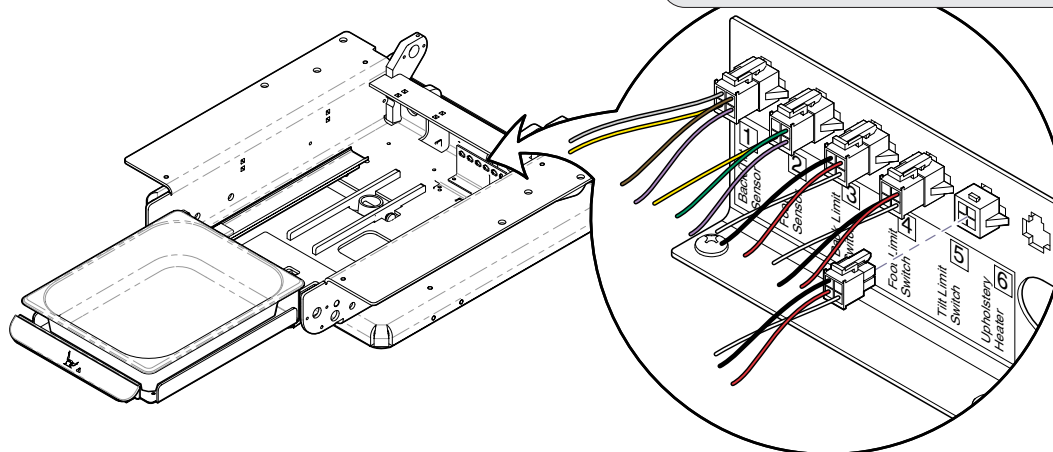
Note: Replace all cable ties and wire clamps.

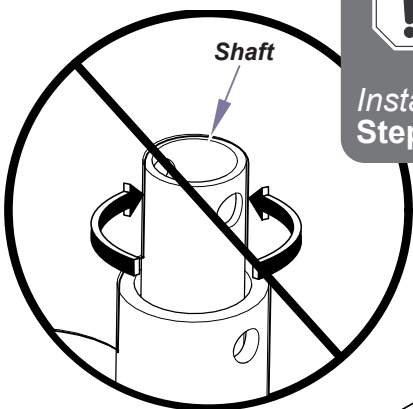
Installation

Step 4: Connect tilt limit switch wire harness to junction board.

Removal

Step 2: Disconnect tilt limit switch harness [5] from junction board.





Equipment Alert

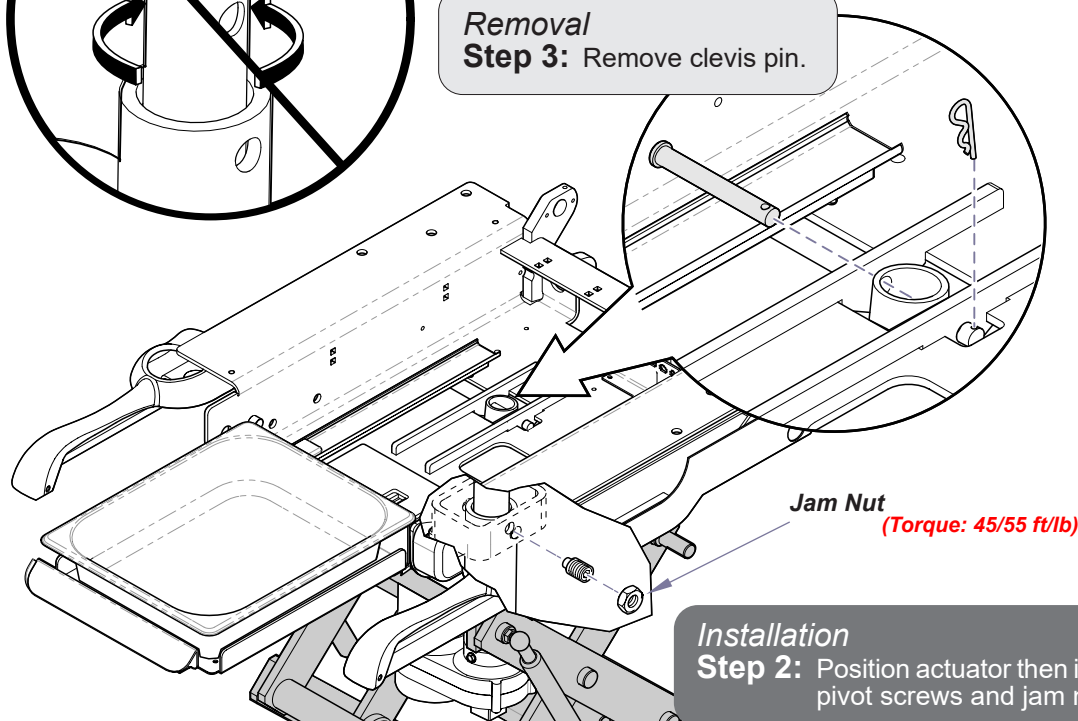
Carefully remove tape from actuator shaft.
Do not rotate actuator shaft!

Installation

Step 3: Install clevis pin and cotter pin.

Removal

Step 3: Remove clevis pin.



Installation

Step 2: Position actuator then install pivot screws and jam nuts.

Removal

Step 5: Remove jam nuts, pivot screws and actuator.

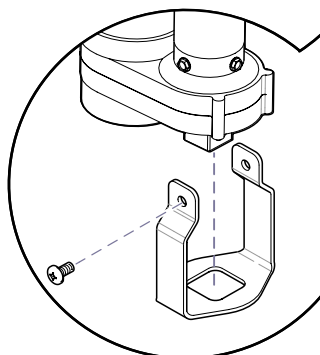
Removal *Ritter models only*

Step 4: Remove support strap.

Installation

Ritter models only

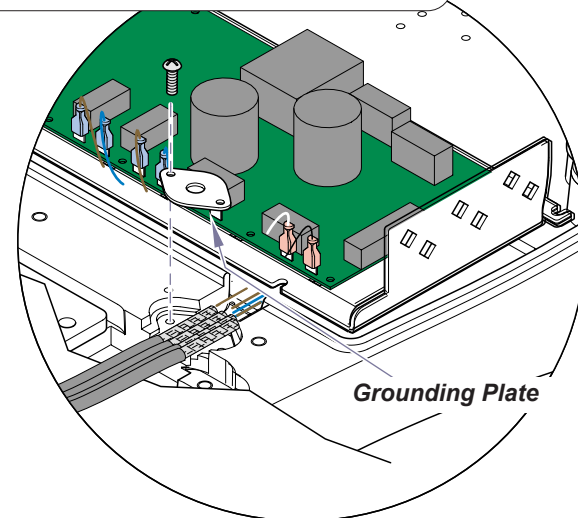
Step 1: Install support strap.



Grounding Instructions

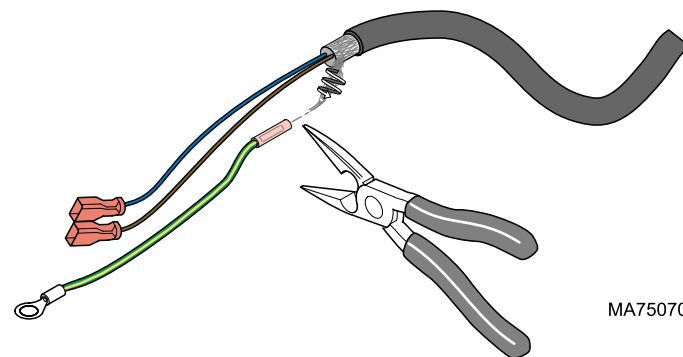
Models w/Grounding Plate:

To ensure proper ground, the metal braided insulation on the actuator wires must be in direct contact with the grounding plate.



Models w/o Grounding Plate:

Push back the metal braided insulation on actuator wires. Connect the ground wire (*provided*) as shown. Connect ground wire to base casting w/screw (*provided*).



MA750700i