

External Condensing Tank Installation Sheet

002-1031-XX

Intended Use:

To condense steam and facilitate the removal of water dispersed during the sterilizer's air purges and venting process. The tank will need to be emptied on a periodic basis.

Components:

M3 External Tank Lid Assembly	1
M3 External Condensing Tank	1
External Tank Tubing Assembly	1

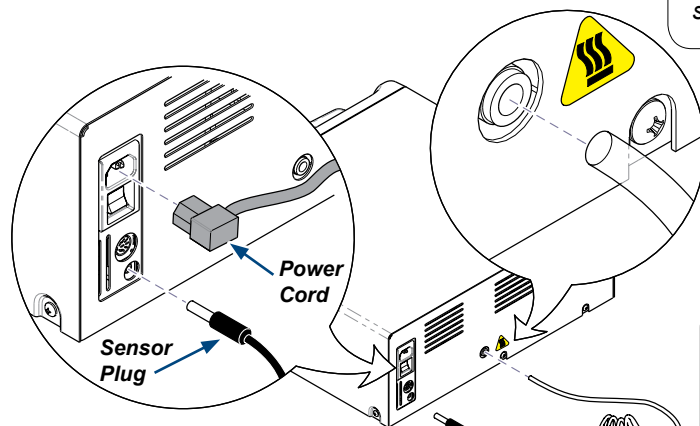
Special Tools:

None

INSTALLATION PROCEDURE

Step 6: Reconnect sterilizer's power cord.

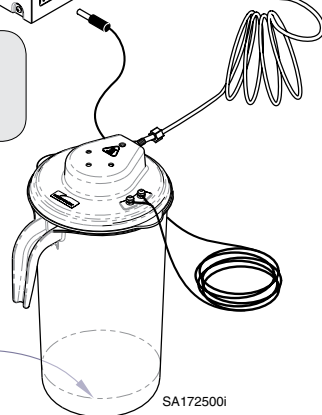
Step 2: Disconnect sterilizer's power cord.



Step 4: Connect sensor plug to port on back of sterilizer.

Step 5: Fill tank with water to minimum water level indicator.

Minimum Water Level Indicator Line Inside Tank



Equipment Alert

The vent hose must be properly connected (and not kinked). Improper connection will release water / steam onto support surface.

Note:

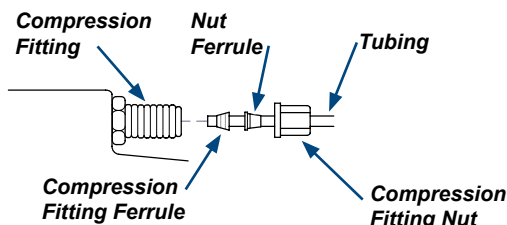
External condensing tank should be placed on a flat level surface no higher than the surface the unit is residing on.

Step 3: Push tubing securely into fitting on back of sterilizer.

Step 1: Insert tubing into lid.

A) Insert tubing into plastic compression fitting on lid and tighten nut. If you have difficulty inserting tubing, remove ferrules from fitting and insert onto tubing prior to insertion into fitting.

Note: Ferrule positioning is critical to prevent leaks.



DRAINING PROCEDURE



Caution

Water that is discharged to external condensing tank can be VERY HOT; persons emptying pitcher should allow the temperature to cool. Always use carrying handle and use caution when emptying.

Empty external condensing tank by rotating tank lid assembly and lifting up and out of the external tank. Grab tank by its handle and pour contents into an approved drain.

Note: Lid can be reinstalled in four locations in relationship to pouring handle location.

