

Components:

Master Switch	1
and Gasket	1
Instrument Holder	
Connector	1
Air Valve	1

No Special Tools

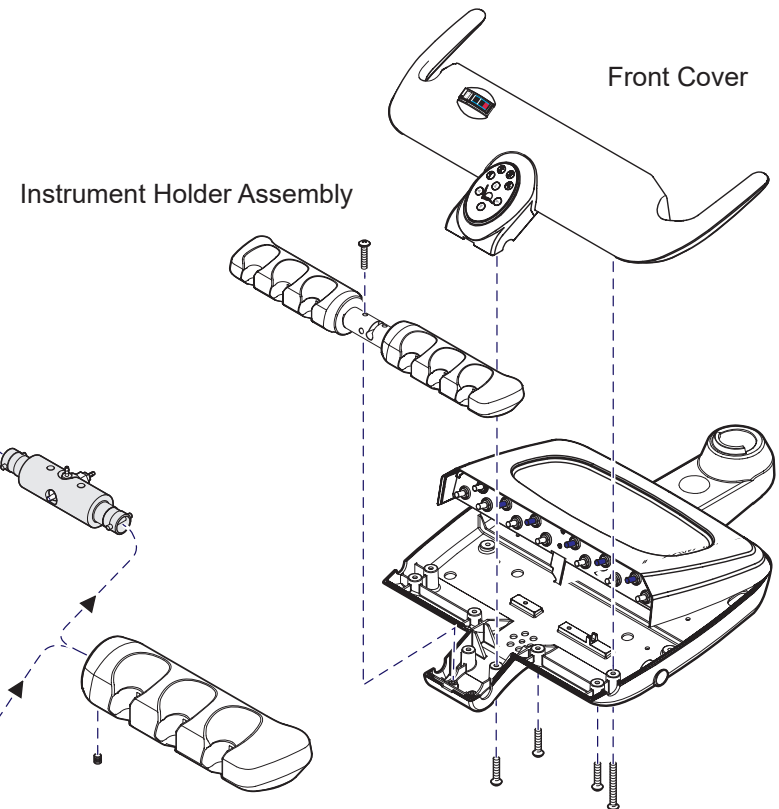
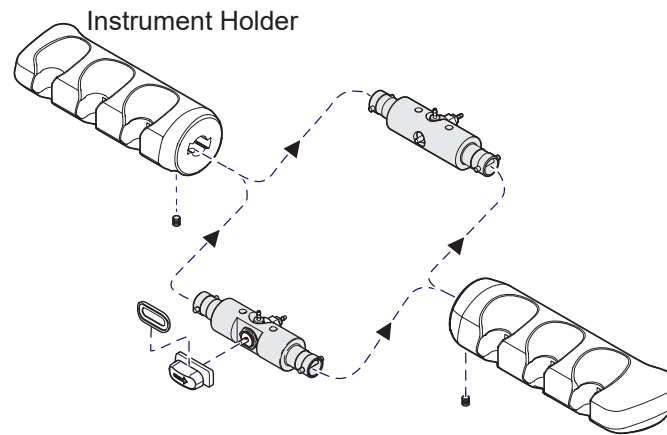
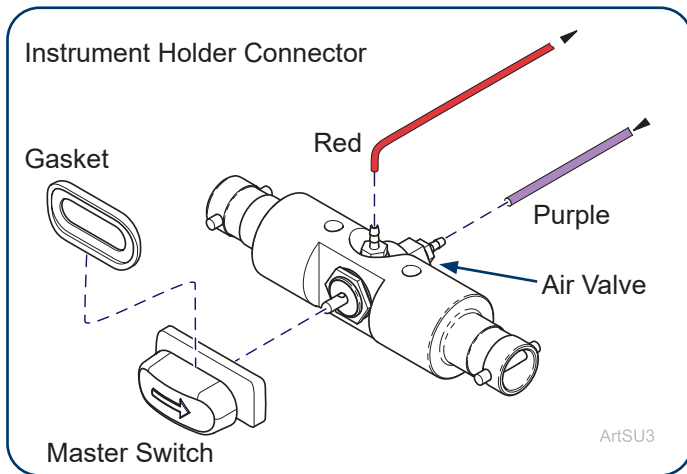


Equipment Alert

Turn OFF the Manual Air Shutoff Valve (in Junction Box).
Purge any residual air in system.

Step 1: Replace Instrument Holder Connector.

- A) Remove screws and lift off Front Cover.
- B) Remove two screws and the Instrument Holder Assembly from Bottom Housing.
- C) Disconnect red and purple tubing from Air Valve.
- D) Loosen two set screws and remove the Instrument Holder Connector.
- E) Install new Instrument Holder Connector and tighten the set screws.
- F) Install Instrument Holder Assembly onto bottom housing.
- G) Connect red and purple tubing to the Air Valve and install the Master Switch.
- H) Install Front Cover and install and Gasket for Master Switch.



ArtFull