

Back Actuator Replacement [002-1072-0x]



Caution

Always disconnect power to chair before removing covers or performing any service procedure.

Applies to kits:

Back Actuator Kit (complete)
Back Actuator Kit (w/o motor)

Special Tools:

Bungee cord

646 models (not shown)

Step 1: Remove base shrouds.

230 / 630 / 647 models

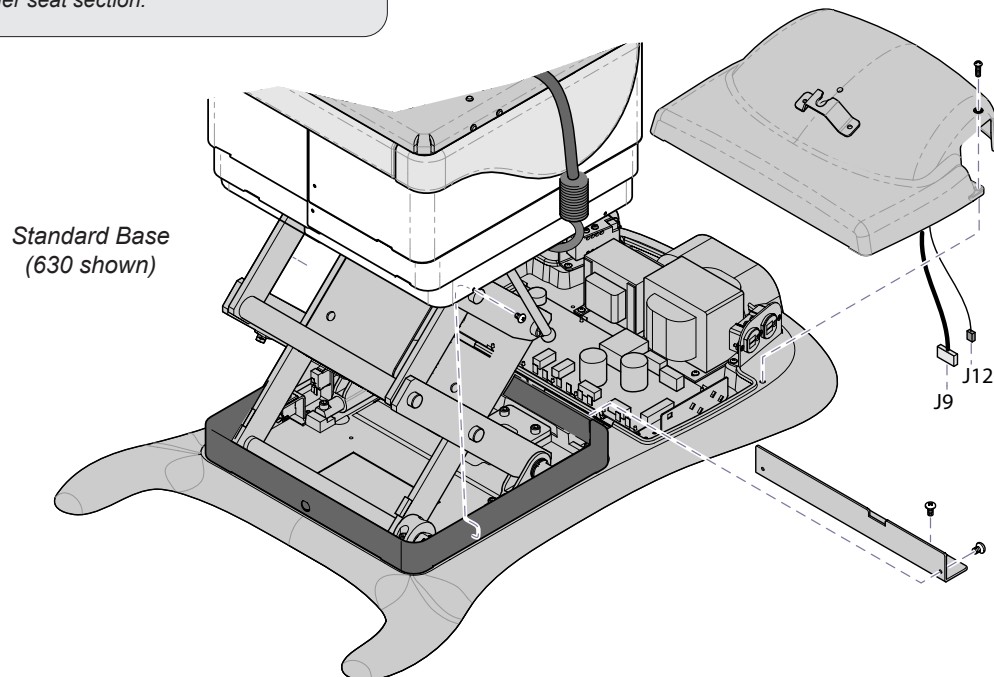
Step 1: Raise base shrouds.

- Remove bottom screws from inner shrouds.
- Stretch bungee cord (under seat) across top of base column*.
- Lift shrouds, then attach bungee cord hooks under shrouds on both sides.

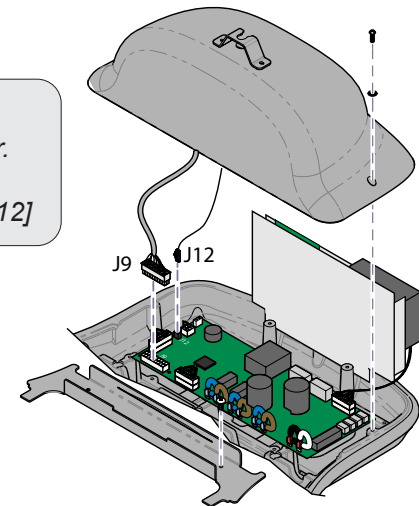
*Note: It may be necessary to run the Tilt Up function to route bungee cord under seat section.

Step 2: Remove PC board cover.

- Remove two screws, then **partially** separate cover.
- Disconnect PC board cover wiring from PC board.
[230 / 630: J9 and J12] [646: J13 and J14] [647: J12]



Rotational Base
(630 shown)

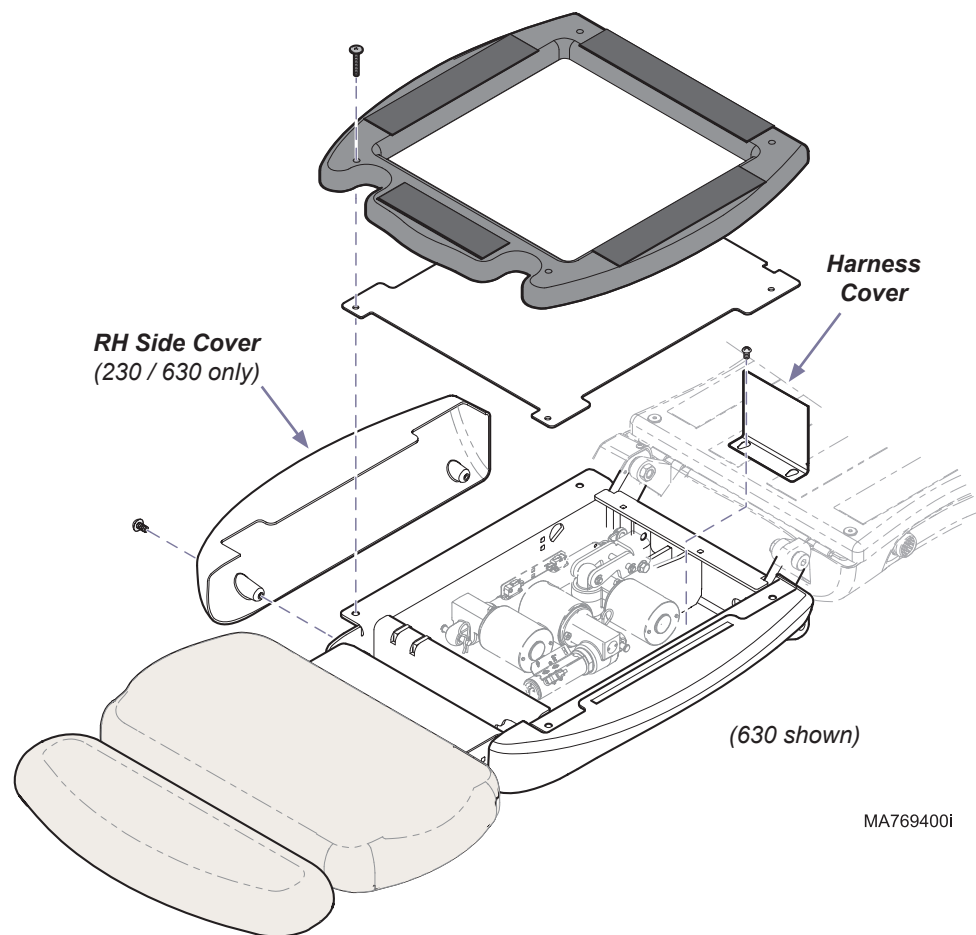


Step 3: Remove wire harness cover.

MA768600i

Step 4: Remove covers.

- A) Remove seat board and support plate.
- B) Remove harness cover.
- C) Remove RH side cover (230 / 630 only).



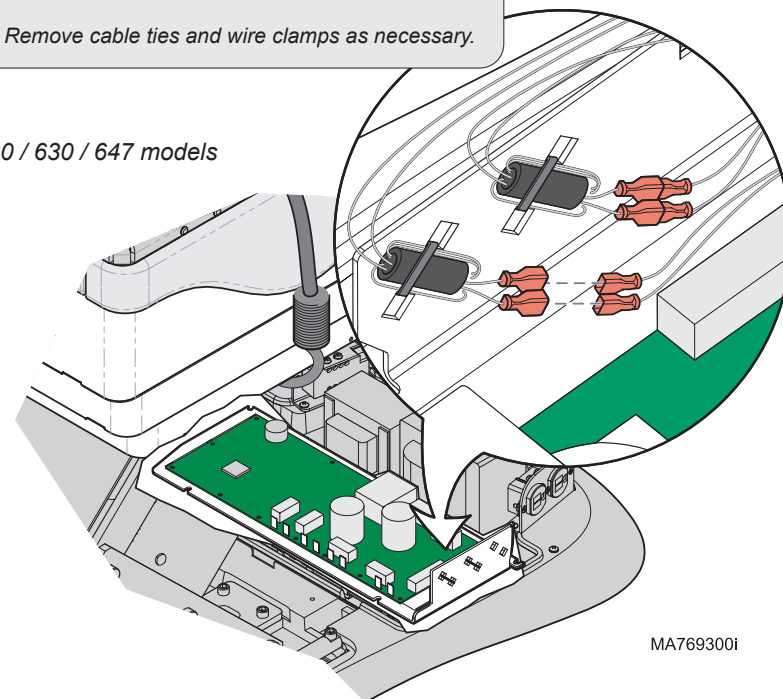
MA769400i

Step 5: Disconnect wiring.

- A) Tag / disconnect back actuator wires.
- B) Disconnect ground wire.
- C) Pull actuator wire up thru chair.

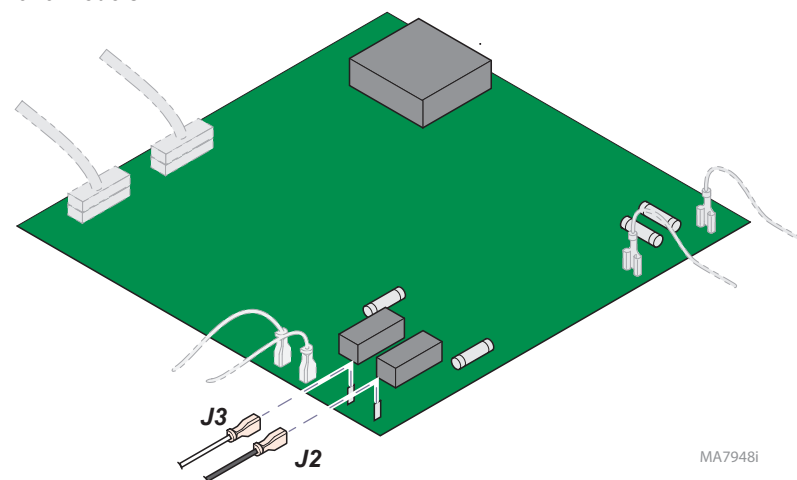
Note: Remove cable ties and wire clamps as necessary.

230 / 630 / 647 models



MA769300i

646 models



MA7948i

Note

It is not necessary to remove the limit switch bracket if only replacing the motor / coupler.



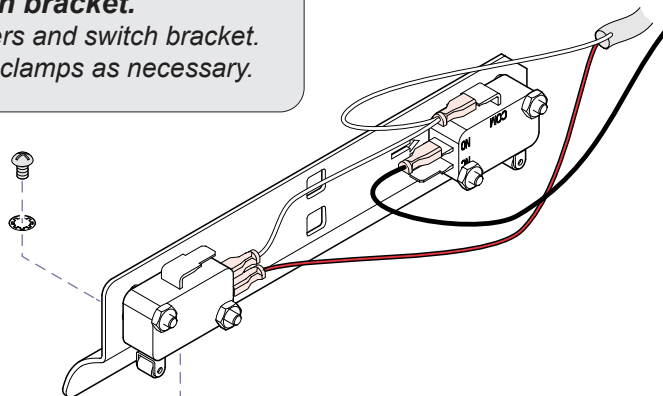
Equipment Alert

The back limit switch adjustment is critical to ensure proper operation (tolerance: 0.030").

Do not attempt to adjust these switches individually!

Step 6: Remove limit switch bracket.

- A) Remove two screws / washers and switch bracket.
- B) Remove cable ties and wire clamps as necessary.



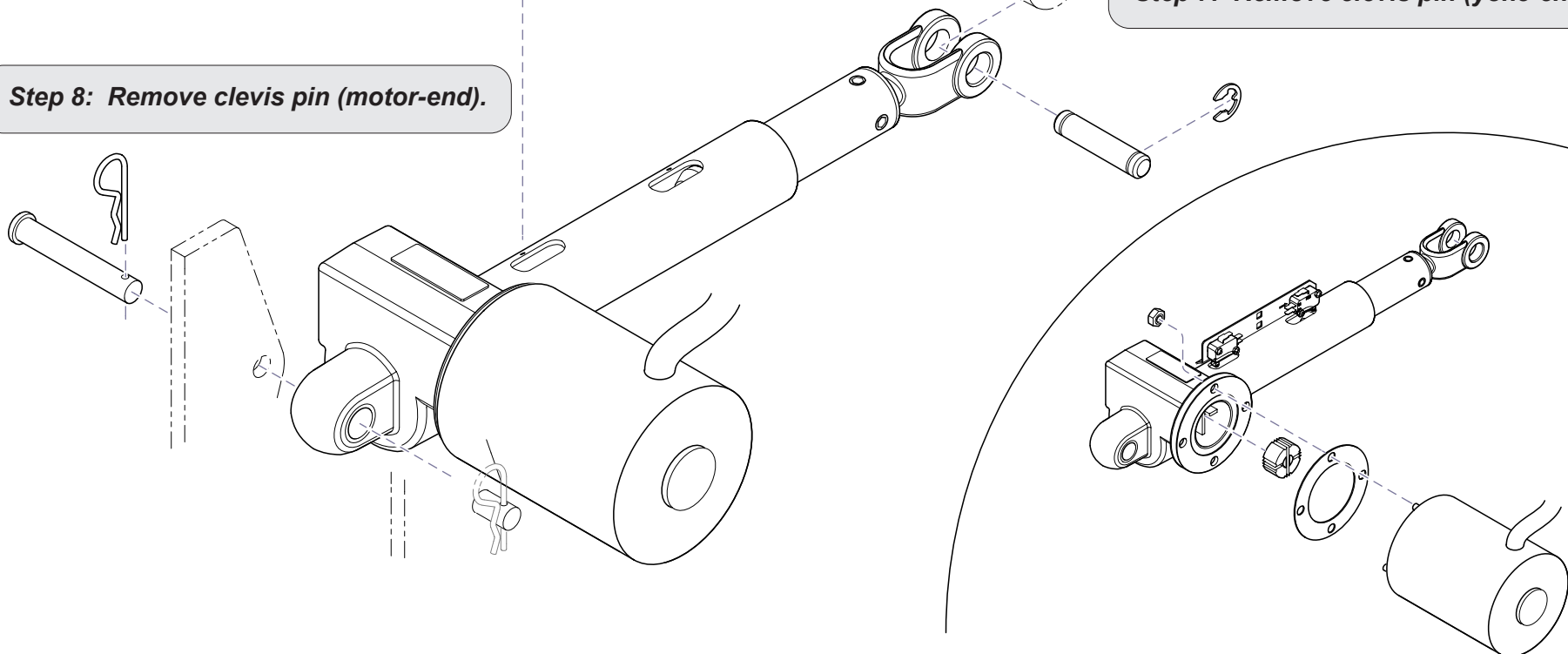
Caution

When pin is removed, the back section will fall. Support back section while performing this step. Once pin is removed, carefully lay back section down.

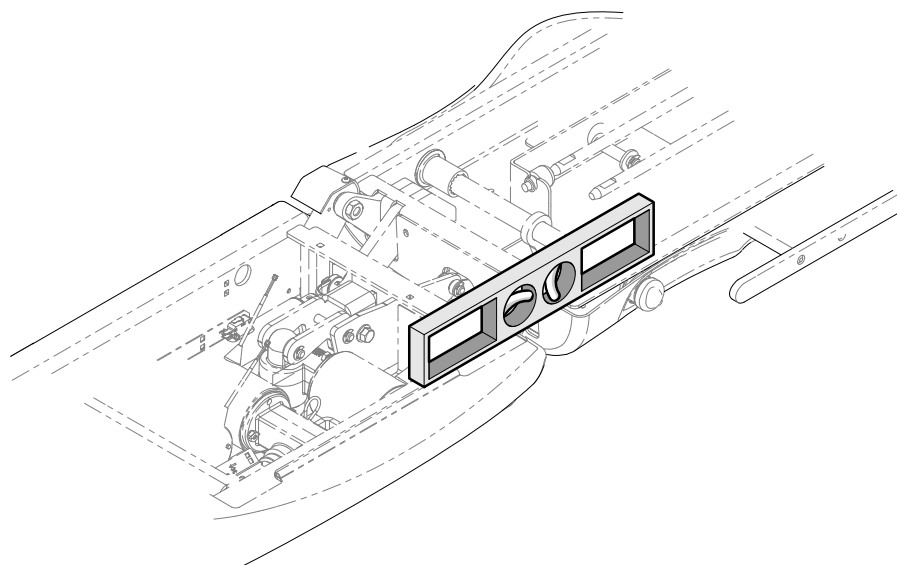
Do not rotate back section forward (over the seat section). Doing so may damage the position sensor.

Step 7: Remove clevis pin (yoke-end).

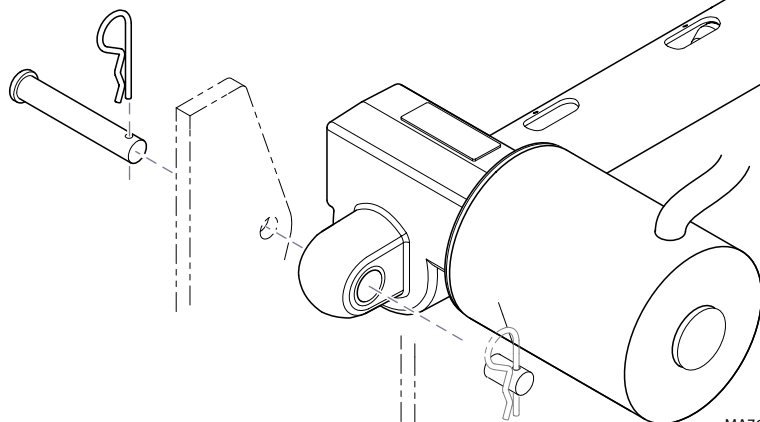
Step 8: Remove clevis pin (motor-end).



MA769500i



Step 9: Install clevis pin (motor-end).

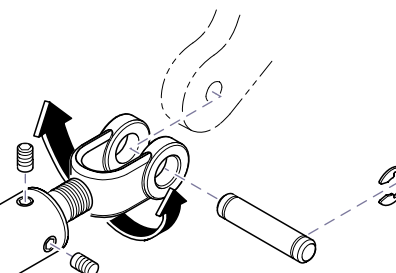


MA769600i

Step 10: Install clevis pin (yoke-end).

- A) Place a level across back and seat weldments*.
- B) Rotate actuator yoke to align holes.
- C) Secure yoke with clevis pin / e-rings.
- D) Install two set screws to secure yoke.

* Note: Remove back section support board (not shown).



To complete installation:

- Install limit switch bracket assembly.
- Connect wiring using illustrations as a guide.
- Replace cable ties and wire clamps as necessary.
- Reassemble all covers, shrouds etc.

003-1738-00


midmark®