

Tilt Actuator Replacement [002-1070-0x]

Applies to kits:
Tilt Actuator Kit (complete)
Tilt Actuator Kit (w/o motor)

Special Tools:
none



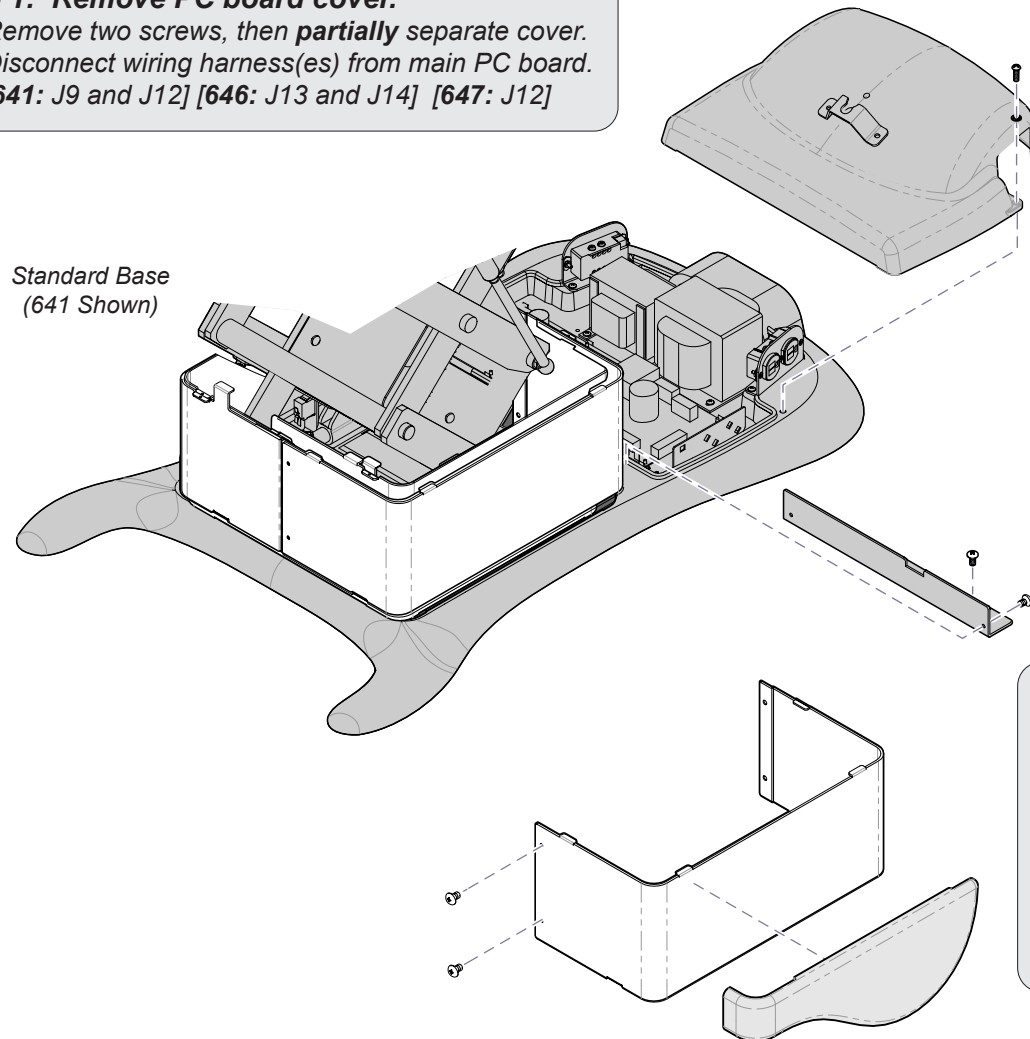
Caution

Always disconnect power to chair before removing covers or performing any service procedure.

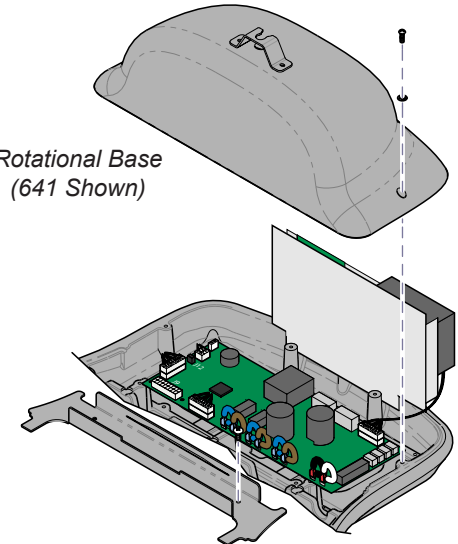
Step 1: Remove PC board cover.

- Remove two screws, then **partially** separate cover.
- Disconnect wiring harness(es) from main PC board.
[641: J9 and J12] [646: J13 and J14] [647: J12]

Standard Base
(641 Shown)



Rotational Base
(641 Shown)



Step 2: Remove wire harness cover.



Equipment Alert

Lower the base before performing Step 3.
This will prevent the shrouds from falling when the outer shrouds are removed.

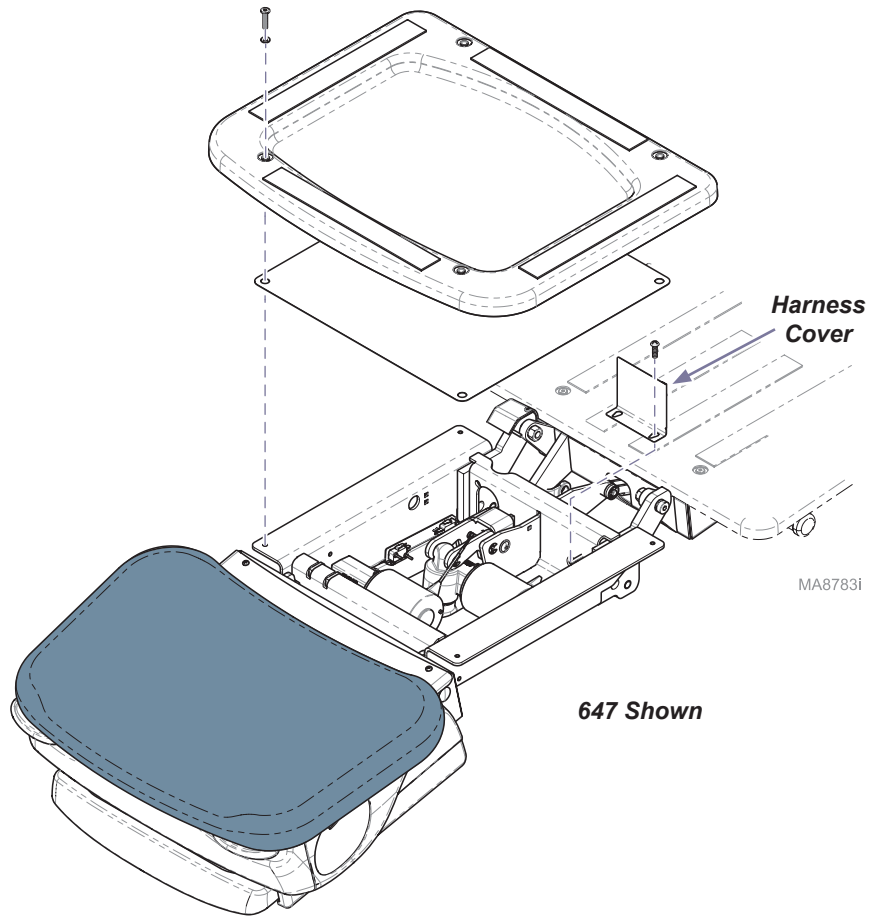
Step 3: Remove shrouds.

- Remove magnetic cladding (3 pcs.).
- Remove screws from outer shrouds only.
- Pull shrouds outward to disengage tabs.

MA8782i

Step 4: Remove covers.

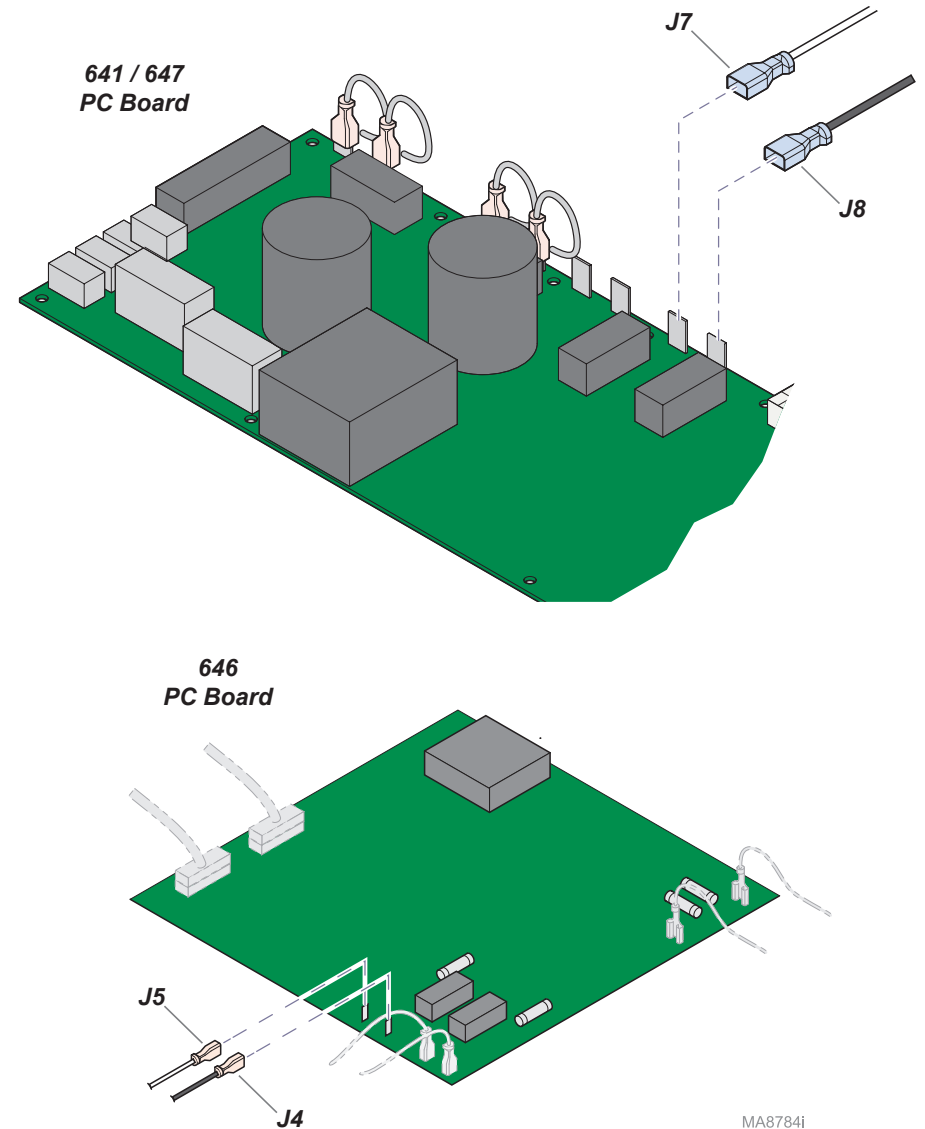
- A) Remove seat board and support plate.
- B) Remove harness cover.

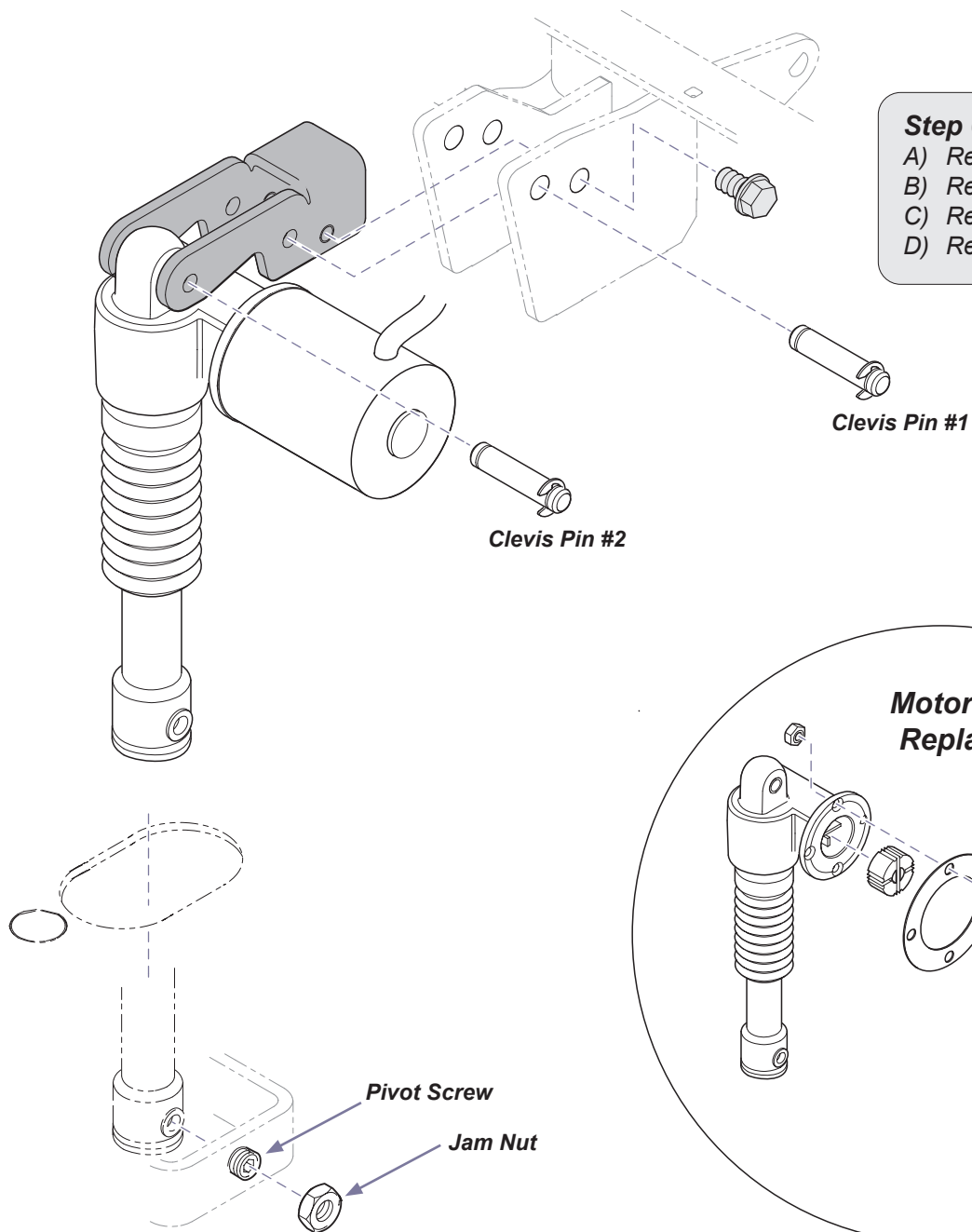


Step 5: Disconnect wiring.

- A) Tag / disconnect tilt actuator wires from main PC board.
[646: J4 and J5] [641 / 647: J7 and J8]
- B) Pull actuator wire up thru chair.

Note: Remove cable ties and wire clamps as necessary.

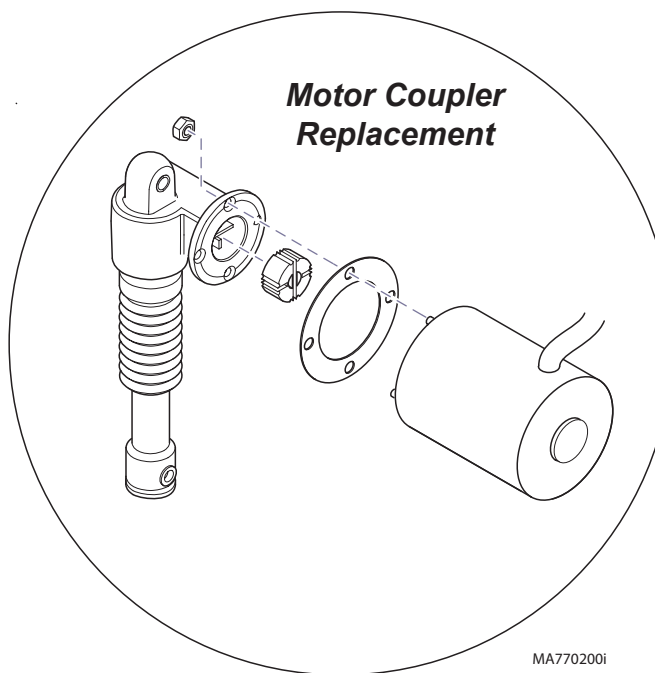




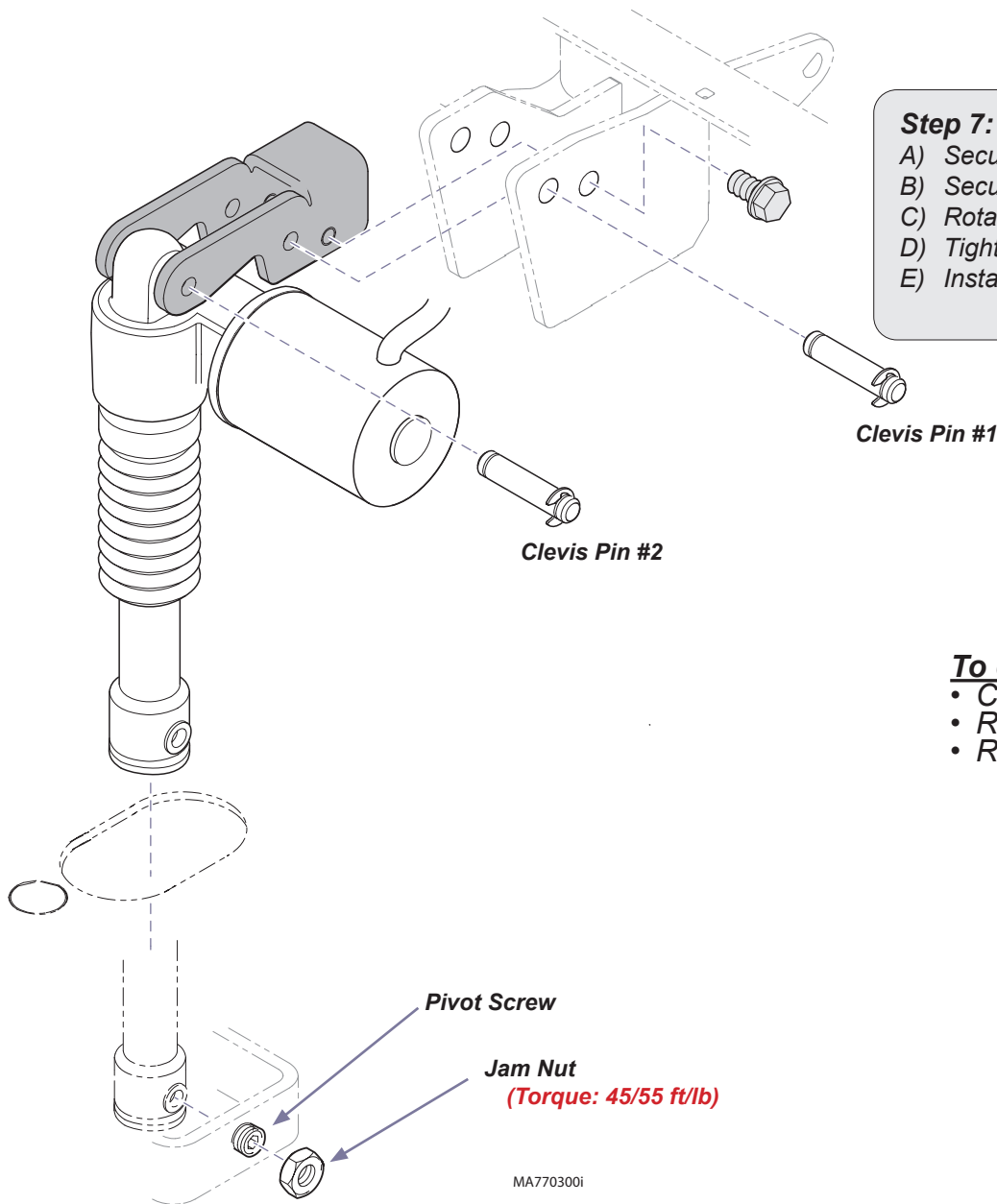
Step 6: Remove tilt actuator.

- A) Remove two jam nuts, then loosen two pivot screws.
- B) Remove two hex screws.
- C) Remove clevis pin #1 and actuator / mounting bracket.
- D) Remove clevis pin #2 to separate actuator from bracket.

Motor Coupler Replacement



MA770200i



Step 7: Install tilt actuator.

- A) Secure actuator to mounting bracket with clevis pin #2.
- B) Secure mtg. bracket / actuator with clevis pin #1 and two hex screws.
- C) Rotate actuator shaft to align holes with pivot screws.
- D) Tighten two pivot screws (equally from each side).
- E) Install / tighten two jam nuts

To complete installation:

- Connect wiring using illustrations as a guide.
- Replace cable ties and wire clamps as necessary.
- Reassemble all covers, shrouds, etc.