

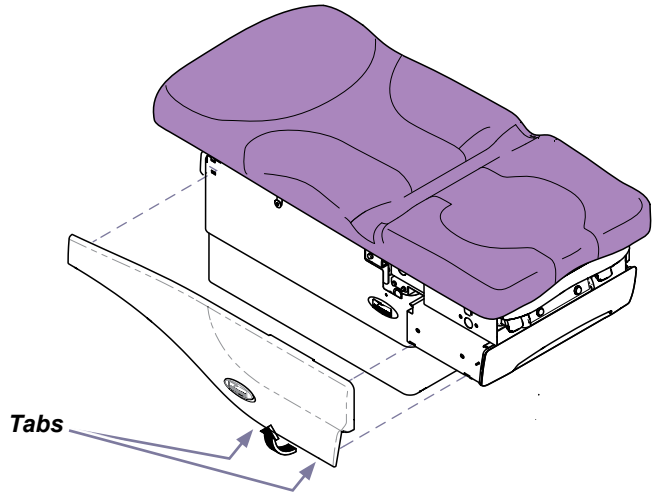


Back Actuator / Back Motor / Back Actuator Bracket

[002-1183-0X / 002-1408-00 / 002-1460-00]

Applies to kits:
Back Actuator Kit (complete)
Back Motor Kit (motor only)
Back Actuator Bracket Kit

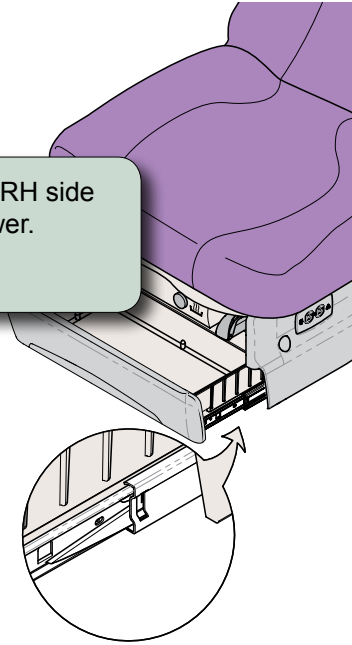
Special Tools:
None



Step 1: Remove cladding.

Step 2: Push LH side lever UP and RH side lever DOWN. Remove drawer.

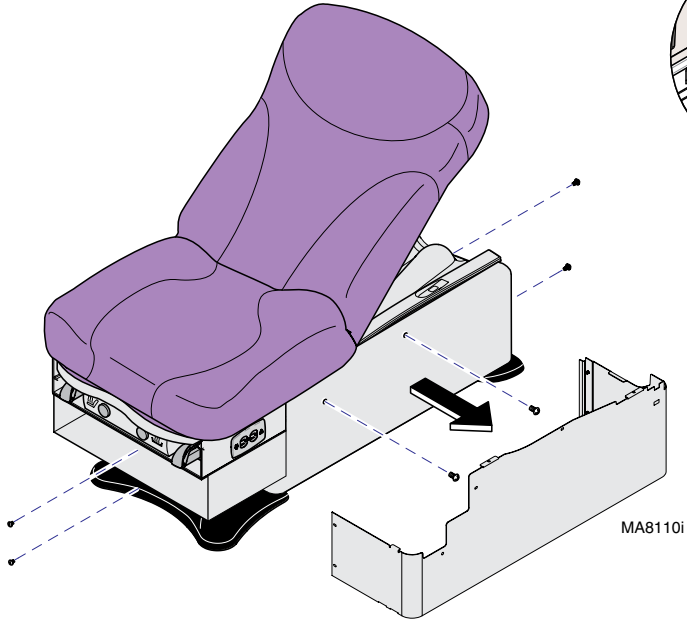
Note: Side levers are clear plastic.

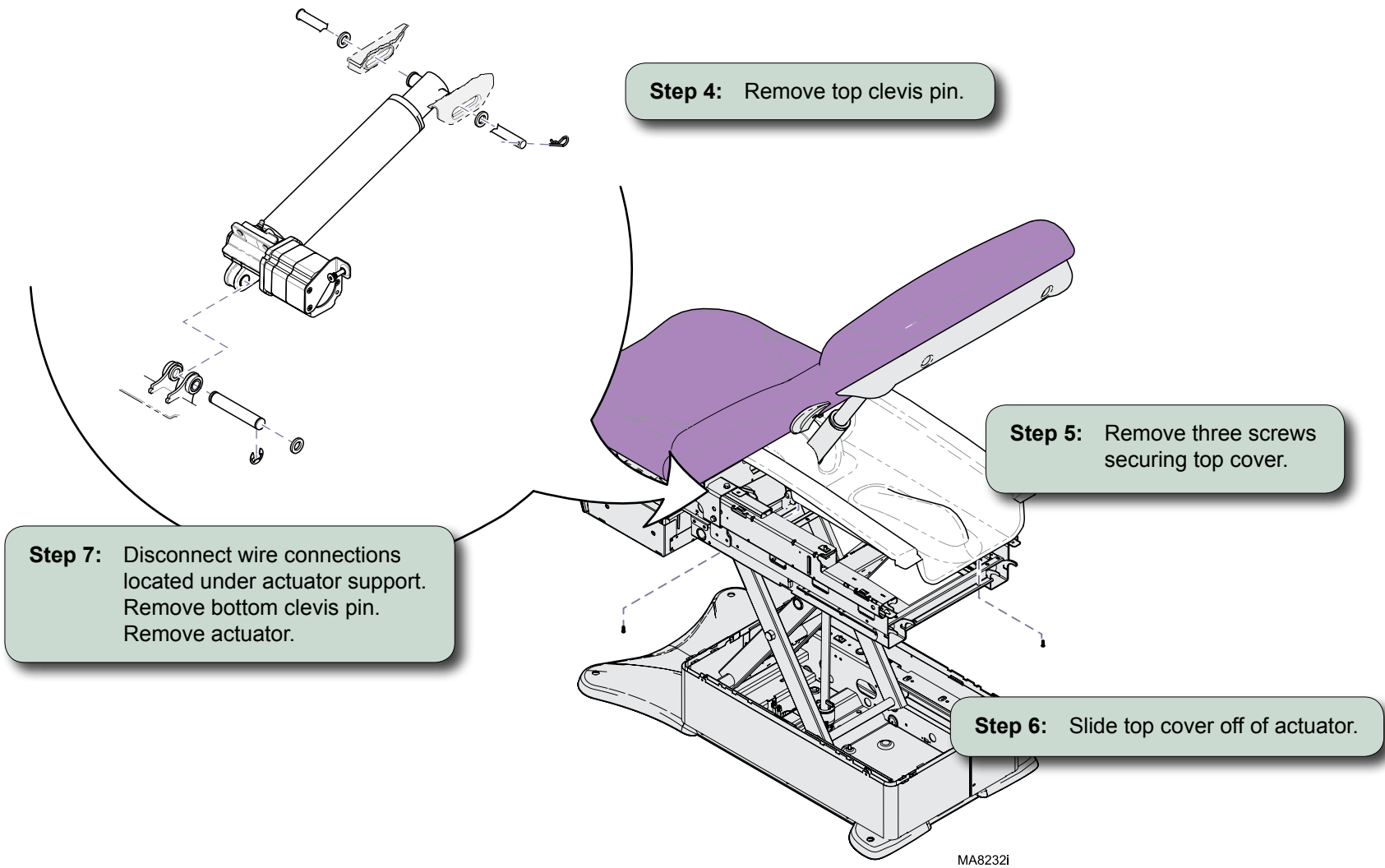


Note
Lower table all the way down to remove shrouds.

Step 3: Remove eight screws.
Remove outer shrouds.

Note: It is not necessary to remove inner and middle shrouds.





Actuator Replacement...



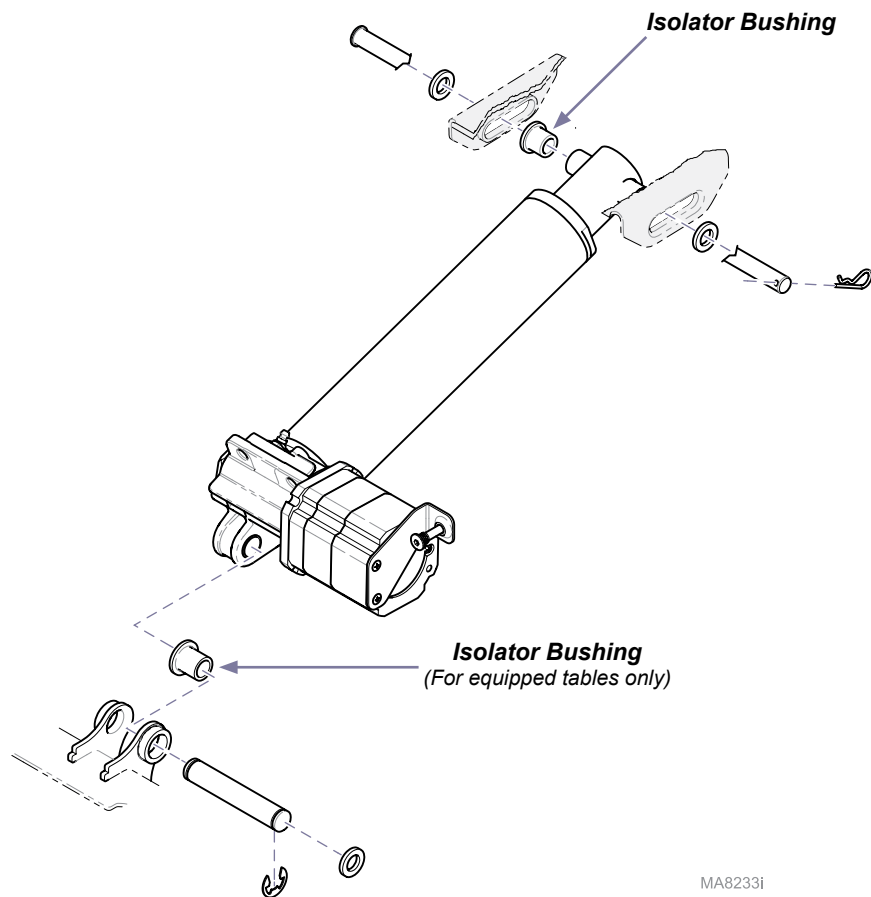
Equipment Alert

If the table was provided with a motor ground strap, the ground strap must be connected to ensure that safety requirements are maintained.

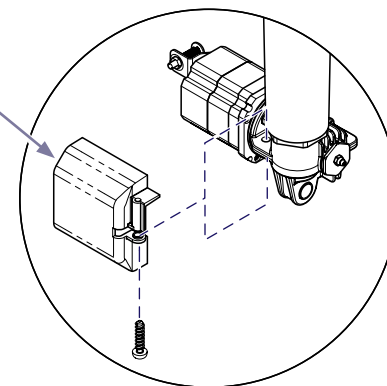


Equipment Alert

If the table was not provided with a motor ground strap, the actuator motor cover must be in place to ensure that safety requirements are maintained.



Actuator
Motor Cover



MA9116i

Step 8:

- A) Replace or reuse two / four isolator bushings.
- B) Install actuator and bottom clevis pin.
- C) Connect wire harnesses.
- D) Slide top cover over actuator and secure.
- E) Install top clevis pin.
- F) Calibrate PC Board.

Motor Replacement...



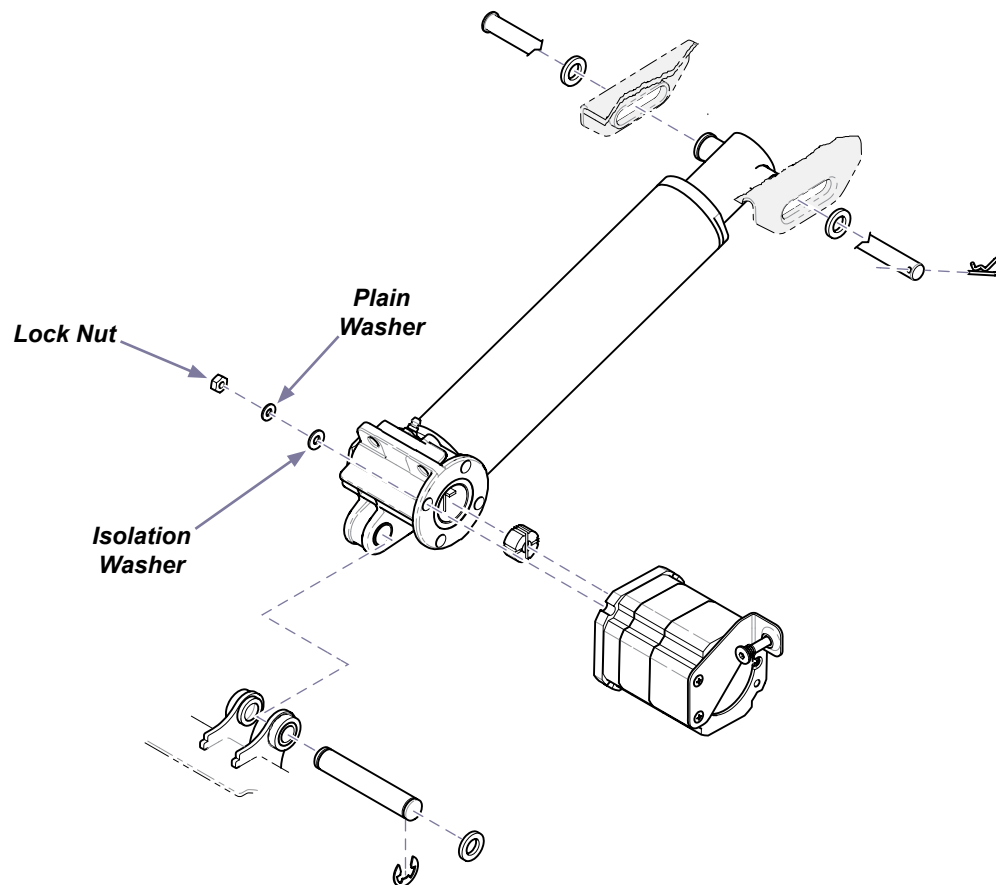
Equipment Alert

If the table was provided with a motor ground strap, the ground strap must be connected to ensure that safety requirements are maintained.



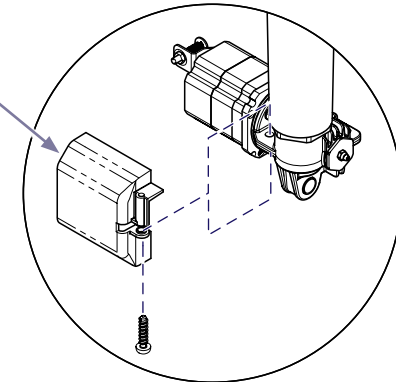
Equipment Alert

If the table was not provided with a motor ground strap, the actuator motor cover must be in place to ensure that safety requirements are maintained.



MA8231i

Actuator
Motor Cover



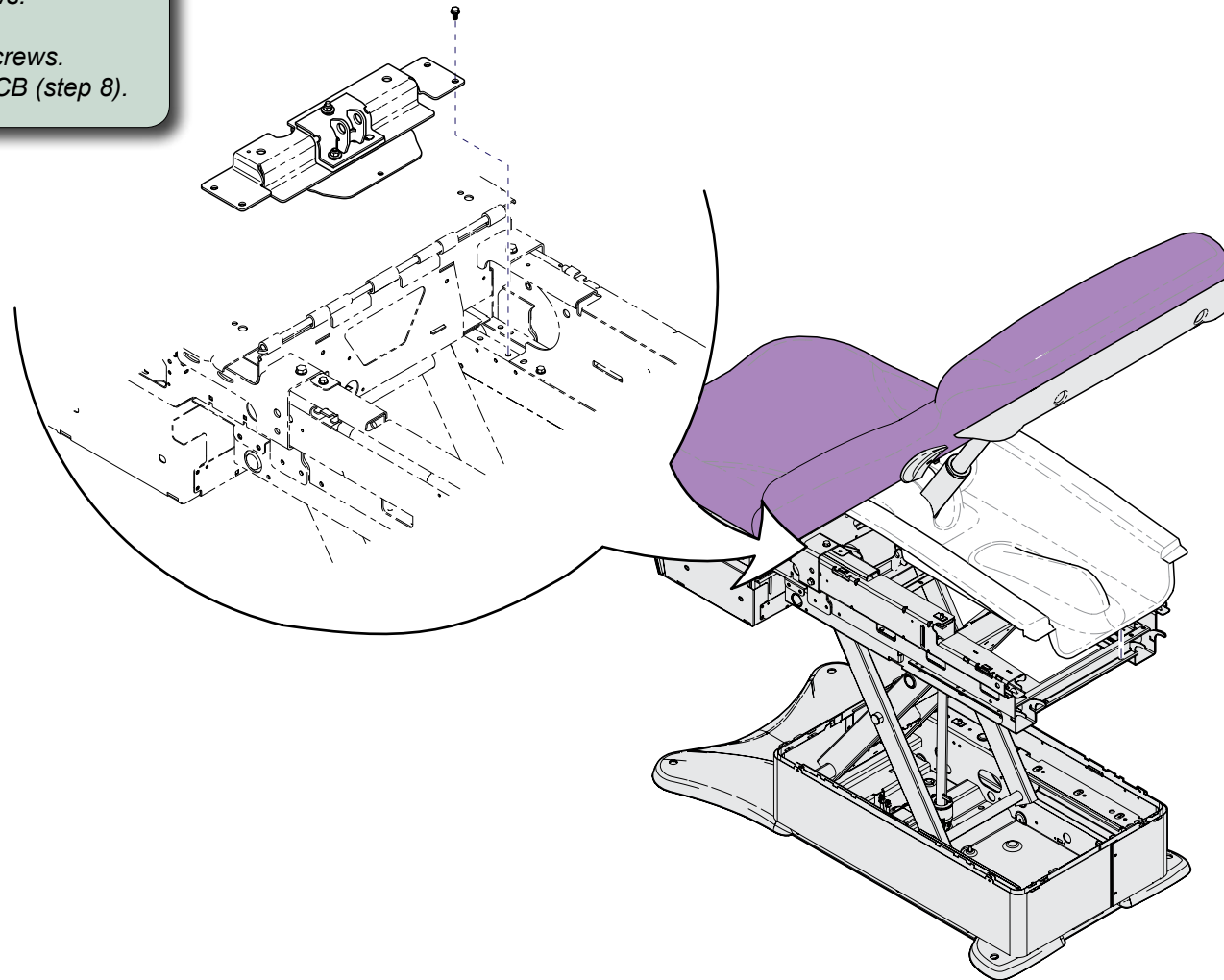
MA9116i

Step 8:

- A) Remove actuator motor cover (if applicable).
- B) Remove two lock nuts, plain washers, and isolation washers.
- C) Remove motor.
- D) Install new motor and secure with two lock nuts, plain washers, and isolation washers.
- E) Install actuator motor cover (if applicable).
- F) Install actuator and bottom clevis pin.
- G) Connect wire harnesses.
- H) Slide top cover over actuator and secure.
- I) Install top clevis pin.
- J) Calibrate PC Board.

Back Actuator Bracket Replacement...

- A) Remove actuator (steps 1 thru 7).
- B) Remove four mounting screws.
- C) Replace mounting bracket.
- D) Secure with four mounting screws.
- E) Install actuator & calibrate PCB (step 8).



MA8283i



Equipment Alert

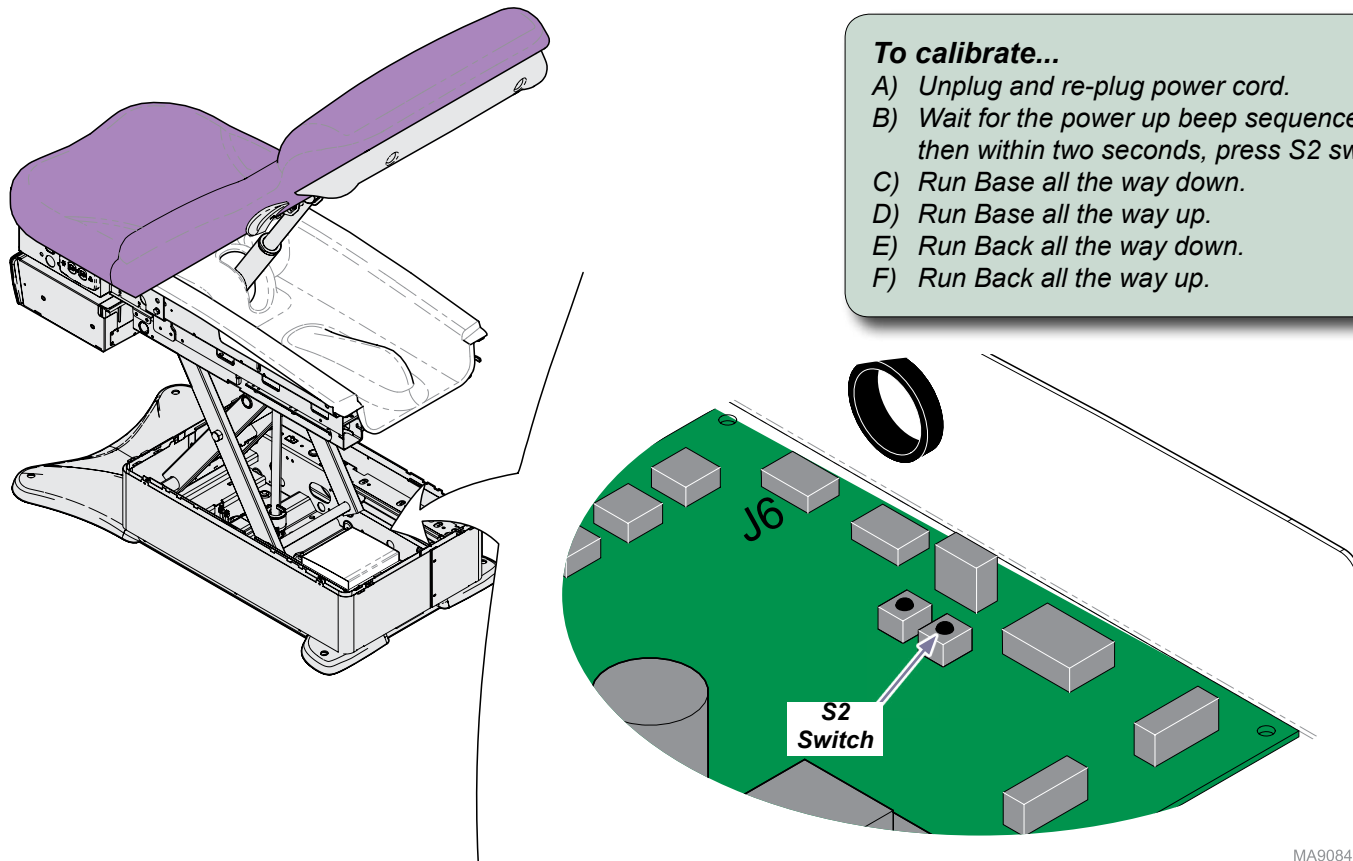
Anytime the PC Board is removed or the actuator wires are disconnected, the PC Board must be calibrated.

Note

When S2 switch is pressed you will hear a steady pattern of “beeps”. When calibration is completed you will hear three short beeps.

To calibrate...

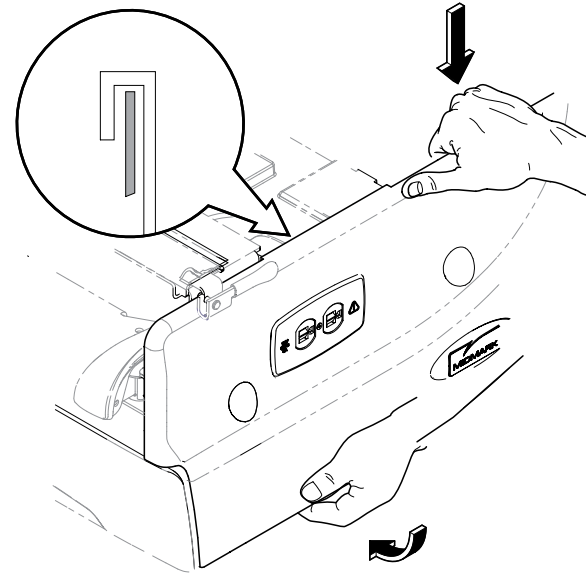
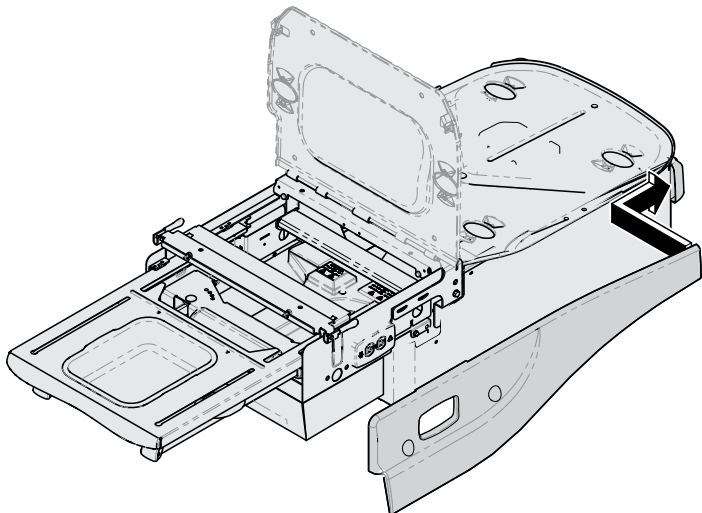
- A) Unplug and re-plug power cord.
- B) Wait for the power up beep sequence from table, then within two seconds, press S2 switch.
- C) Run Base all the way down.
- D) Run Base all the way up.
- E) Run Back all the way down.
- F) Run Back all the way up.



MA9084i

Step 9:

- A) *Install outer shrouds.*
- B) *Install cladding.*



MA8111i

To install cladding...

- A) *Insert tab at head-end of cladding into top shroud.*
- B) *Slide cladding over upperwrap.*
- C) *Pull bottom of cladding out, then push down on the top to engage the long tab onto top edge of upperwrap.*
- D) *Push bottom of cladding in, until two bottom tabs snap into place.*