

Rail Mount System [9A457, 9A622]

Compatible with:
Ritter® 253 LED Exam

Intended Use:

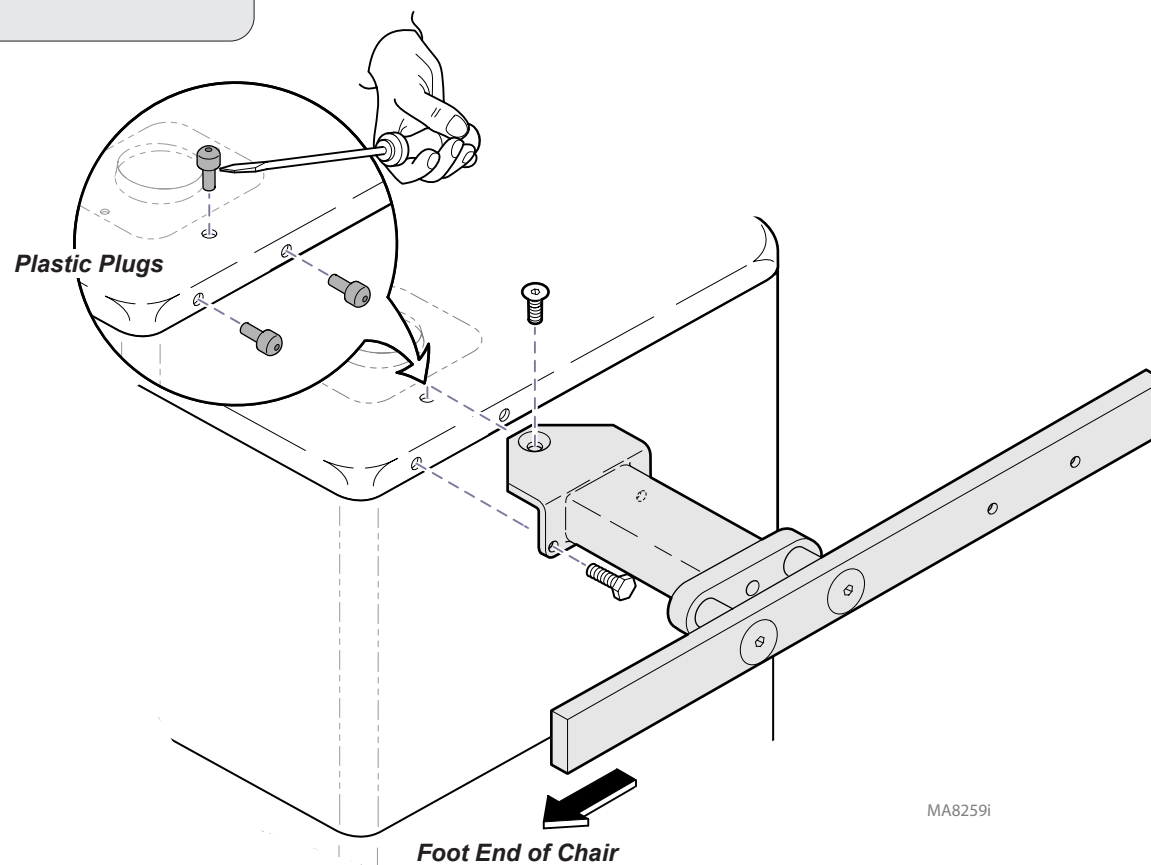
To mount Ritter 253 exam light to chair base rail.

Restrictions:

Cannot be mounted on same side as 9A328 Chair Arm, or 9A227 Seat Rail.

Step 1: Install base rails.

- Move all chair functions to full UP position.
- Remove plastic plugs from mounting holes.
- Position LH base rail as shown, then secure with three screws.
- Repeat for RH base rail.



MA8259i

Step 2: Install light and cord restraint.

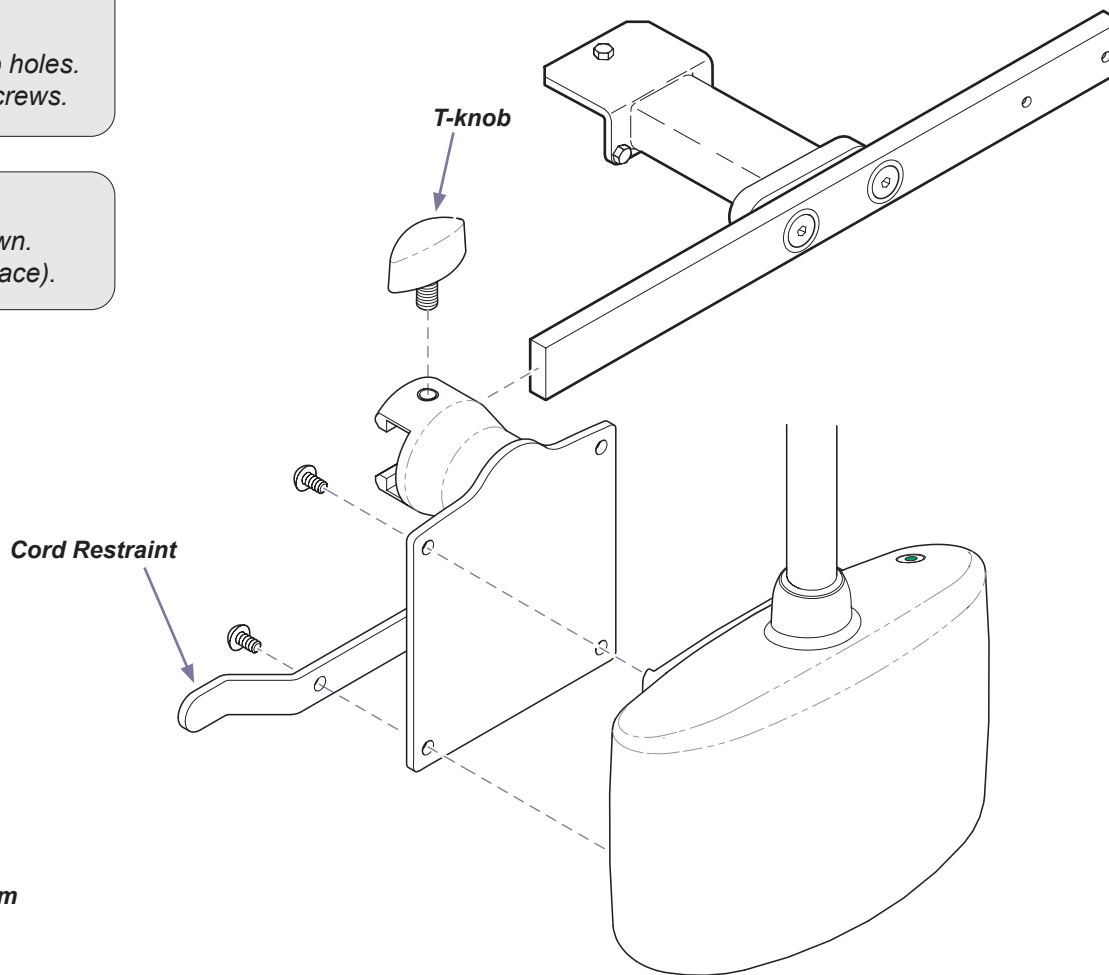
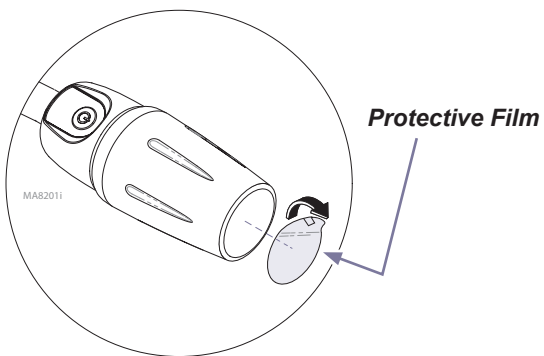
- A) Align light with holes in mounting plate.
- B) Secure light by installing two screws thru the top holes.
- C) Position cord restraint, then install two bottom screws.

Step 3: Install rail mount assembly.

- A) Slide rail mount weldment onto base rail as shown.
- B) Install T-knob. (Tighten to secure weldment in place).

Before using light:

Remove protective film from lens.



MA8190i