

Elevance Console Mounting Arm Installation

Applies to Models:
153810-002 ONLY

Language of origin: English

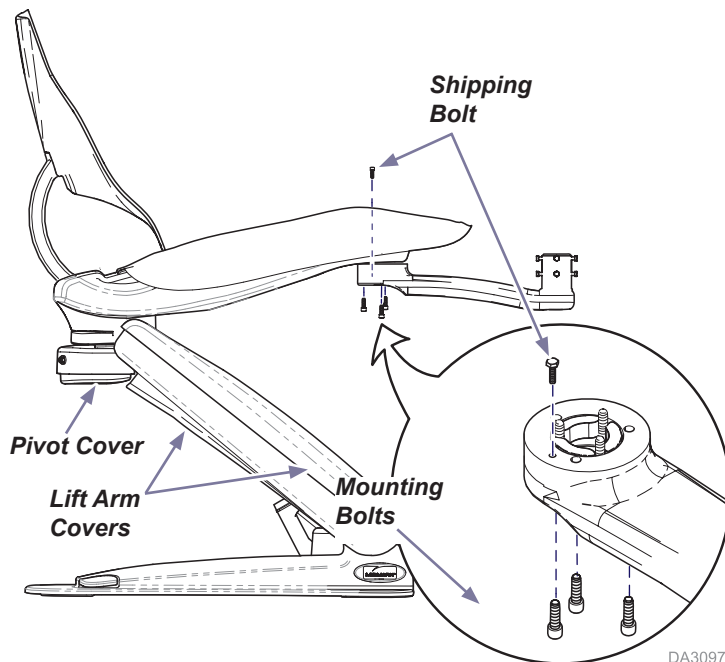
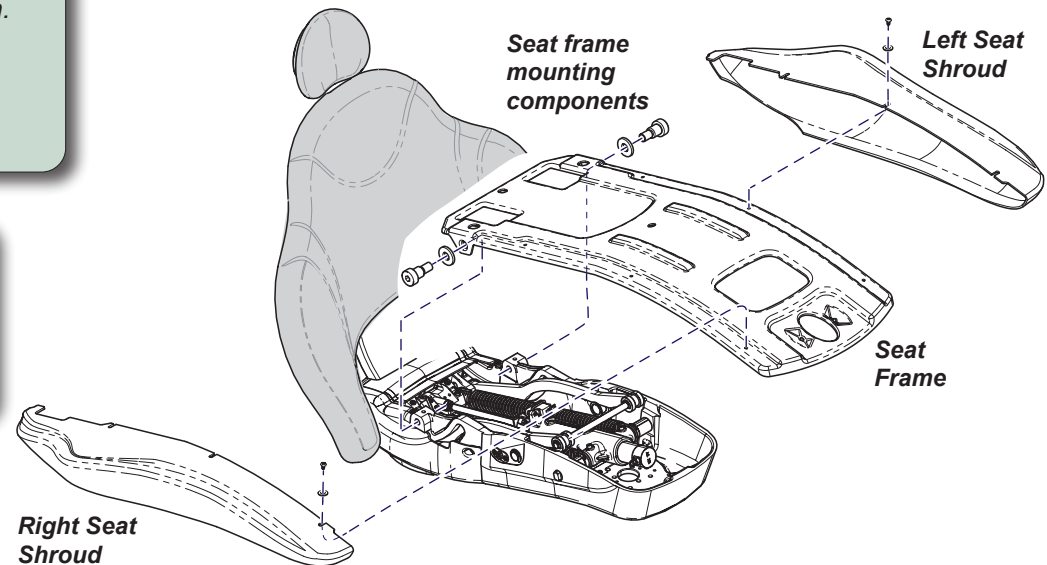
Step 1: Position chair and remove seat upholstery.

- Raise chair seat to a comfortable working height. If no control devices, then tap a lift arm or pivot cover three times to initiate the "home" function.
- Disconnect chair from power source.
- Remove seat upholstery.

Note: The home function positions the chair to a preset height convenient for access.

Step 2: Remove shrouds and seat frame.

- Remove screws and washers from each shroud (left and right).
- Remove both shrouds.
- Remove seat frame mounting components.
- Remove seat frame.



DA3097I

Step 3: Install console arm.

- Remove shipping bolt from inside seat casting.
- Rotate the console arm to the desired side of the chair.
- Apply thread-lock sealant to mounting bolts.
- Insert mounting bolts and torque to 45-55 ft/lb (61-75 Nm).

Step 4: Complete installation.

- Reverse Step 2, then Step 1.

Note: Connect chair to power source and check chair operations.