

## Step 1: Remove cover, belt, motor pulley.

- Disconnect power at on/off switch and main power supply box.
- Remove front cover. Turn bottom fasteners 1/4 turn counter clockwise and pull bottom of cover away from base. Lift cover straight up to free plastic cones from holes in side panels.
- Measure end of shaft to face of top pulley. Write dimension down.
- Slightly rotate tension arm up toward the motor pulley and remove belt.
- Unscrew mounting bolts from hub and insert them into threaded removal holes on hub.
- Alternately tighten bolts to separate pulley from hub, remove both pieces from motor shaft.



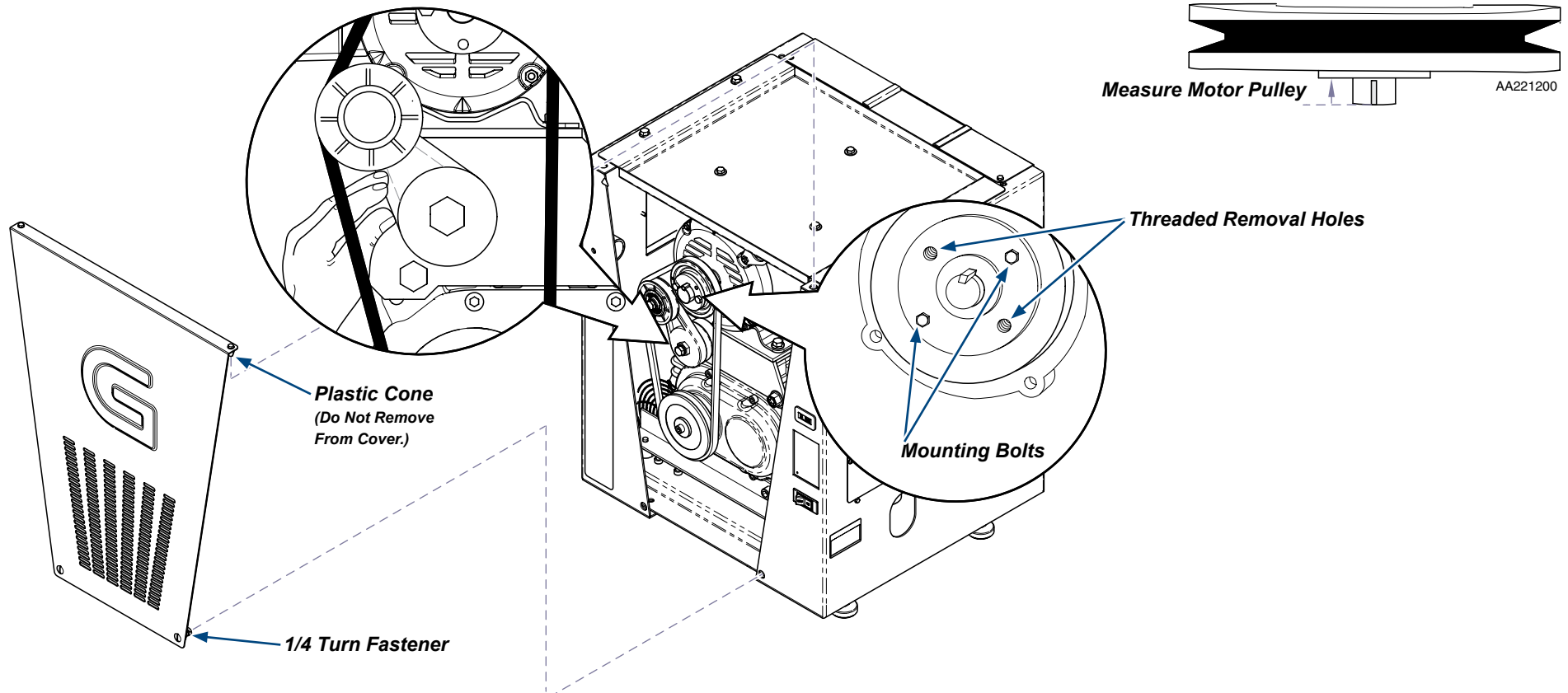
### WARNING

To prevent risk of shock always disconnect power before removing covers or performing any service procedure.



### WARNING

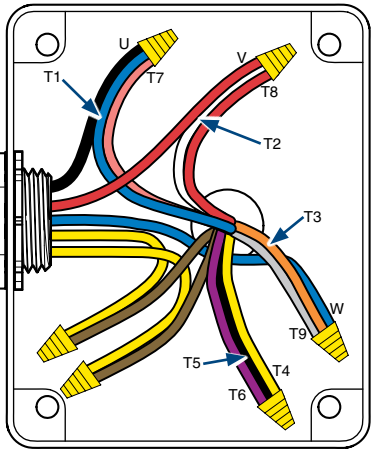
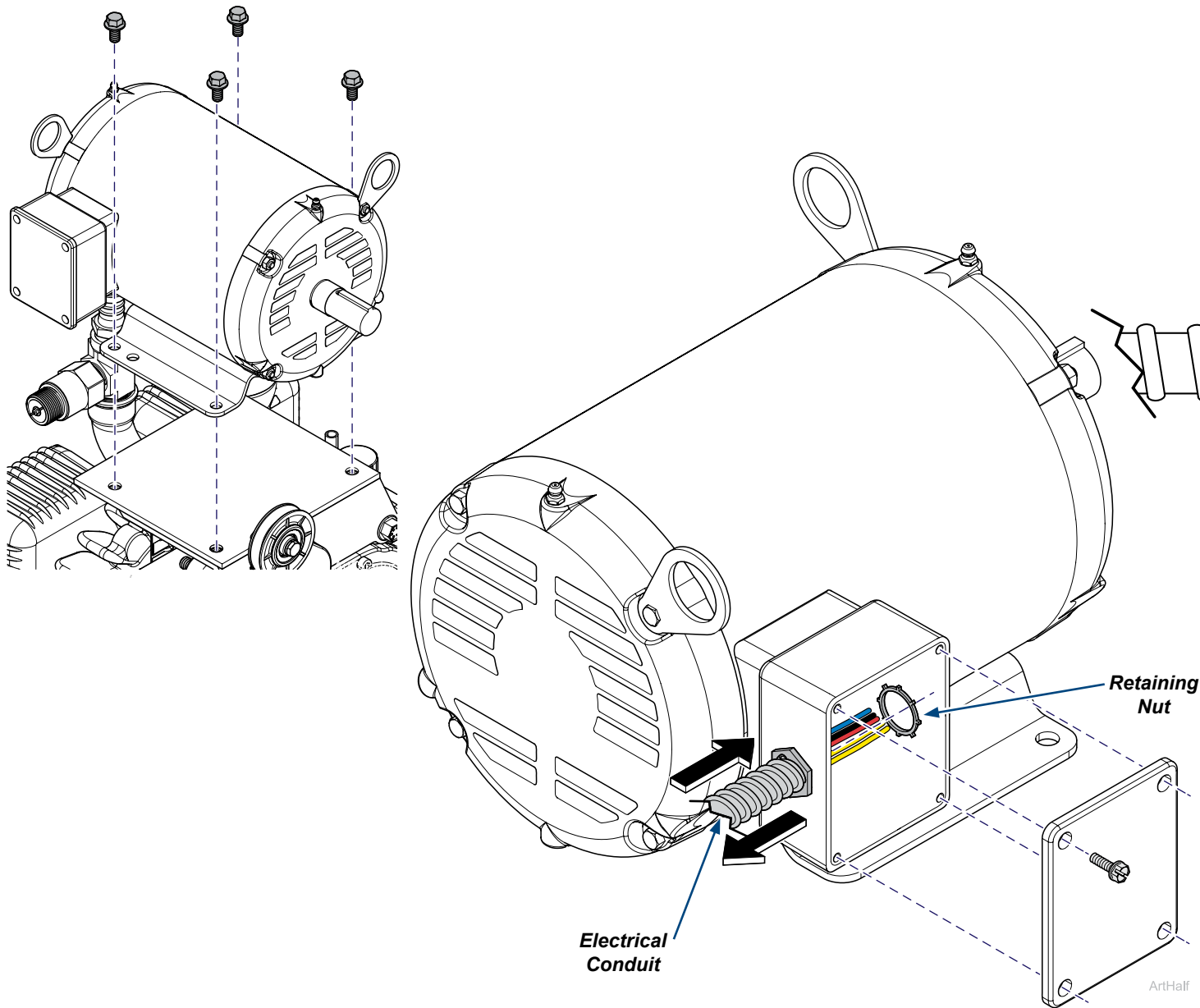
Equipment is not suitable for use in the presence of a flammable anesthetic mixture.



### Step 2: Replace motor

- A) Remove motor electrical box cover and disconnect motor wires.
- B) Remove conduit retaining nut and pull electrical conduit from electrical box
- C) Remove four motor mounting bolts, remove motor, install new motor and secure with mounting bolts.
- D) Insert harness into electrical box and secure with retaining nut. Connect wires to motor and install cover.

Motor Harness To Controller	Motor Wires
<b>U</b> (Black)	<b>T1 / T7</b> (Blue/Pink)
<b>V</b> (Red)	<b>T2 / T8</b> (White/Red)
<b>W</b> (Blue)	<b>T3 / T9</b> (Orange/Grey)
---	<b>T4 / T5 / T6</b> (Yellow/Black/Purple)
<b>1 Yellow</b>	<b>1 Brown</b>
<b>1 Yellow</b>	<b>1 Brown</b>



ArtQuarter

ArtHalf

### **Step 3: Install hub and pulley on new motor.**

- A) Position hub and pulley on to new motor shaft.
- B) Insert mounting bolts through unthreaded holes of hub and into threaded holes of pulley.
- C) Position hub and pulley at a depth that will align the motor pulley with the pump pulley use the measurement from Step 1 for reference.
- D) Verify pump and motor pulley are aligned with a straight edge on both sides and tighten mounting bolts.
- E) Install belt, Replace front cover. Connect power. Test vacuum.

