

Release Handle Kit [002-1583-0x]

Applies to Models:

272 / 273

276 / 277 / 279

Special Tools:

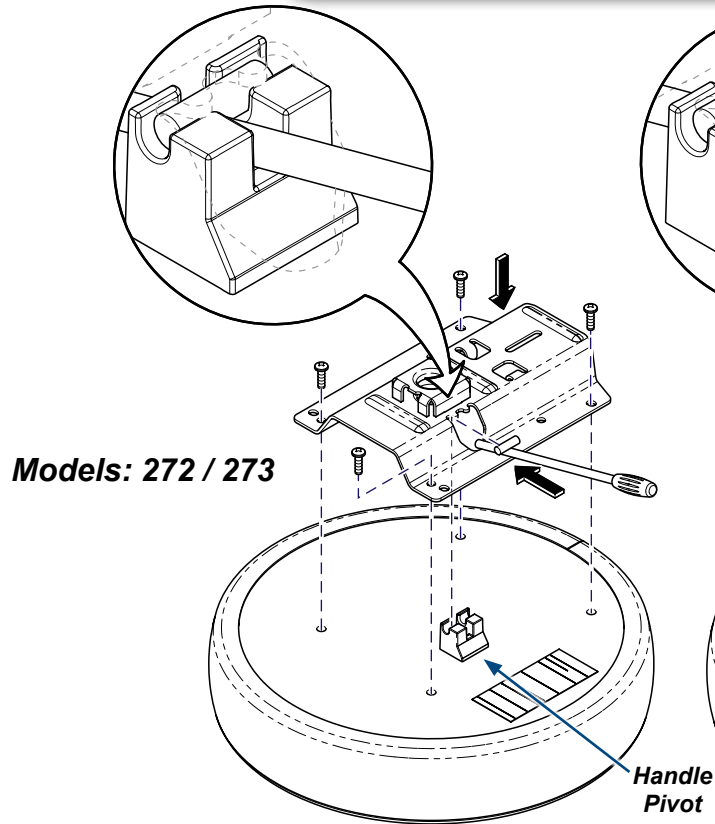
none

Language of origin: English

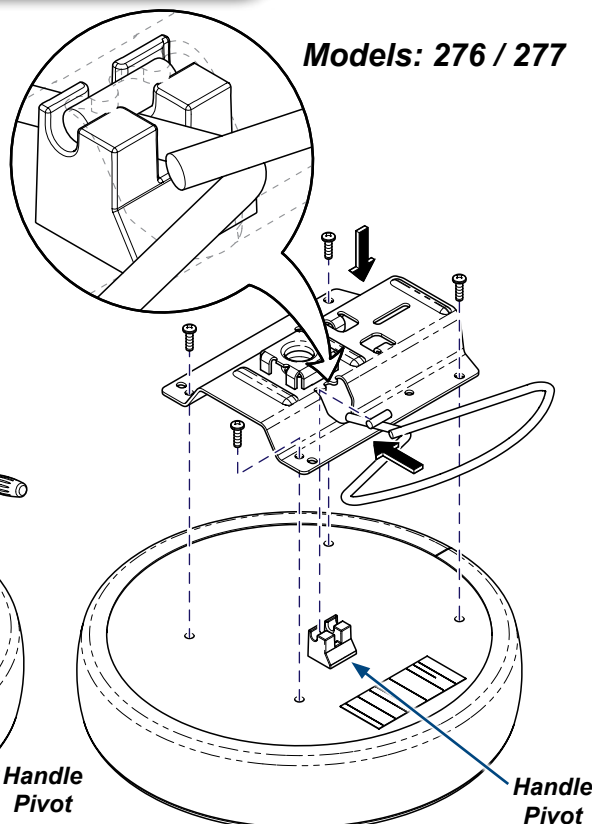
To install stool release handle...

- Place handle pivot on seat bottom.
- Insert handle through seat base weldment.
- Place handle onto handle pivot as shown.
- Secure seat base weldment to seat with four screws.

Note: Re-use screws removed from seat bottom.



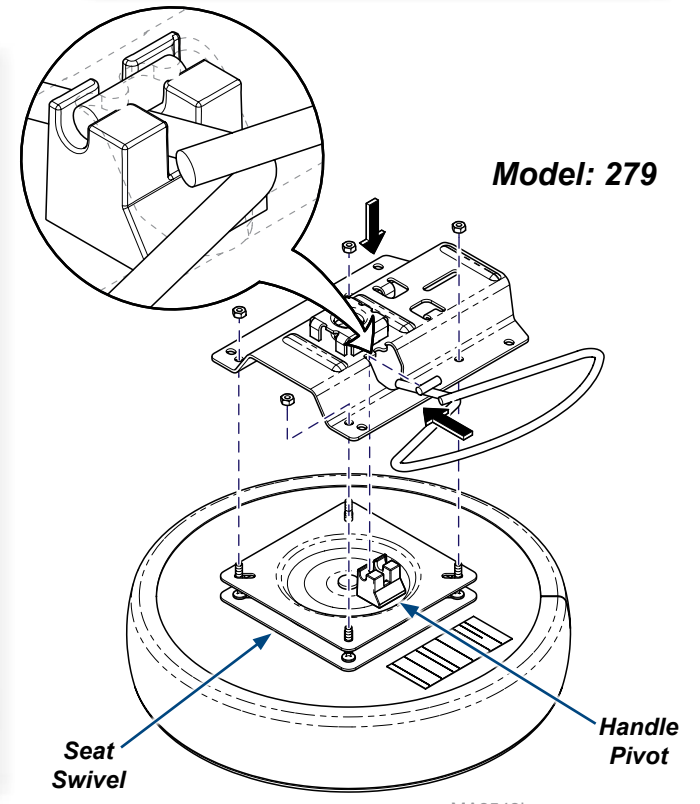
Models: 276 / 277



To install 279 stool release handle...

- Place handle pivot on seat swivel.
- Insert handle through seat base weldment.
- Place handle onto handle pivot as shown.
- Secure seat base weldment to seat swivel with four bolts and nuts.

Note: Re-use bolts and nuts removed from seat swivel.



MA8548i