

Elevance Chair Roller Replacement [002-1642-00]

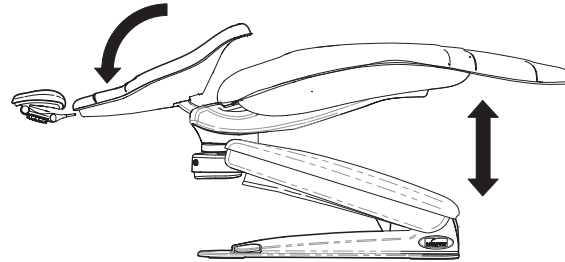
Applies to Models:
153810 (all)

Special Tools:
Torque wrench

Note: Torque wrench should be capable of 33 ft-lbs (44.7 Nm).

Step 1: Position the chair.

- A) Move the back section to FULL DOWN position.
- B) Raise / lower the chair to a comfortable working height.

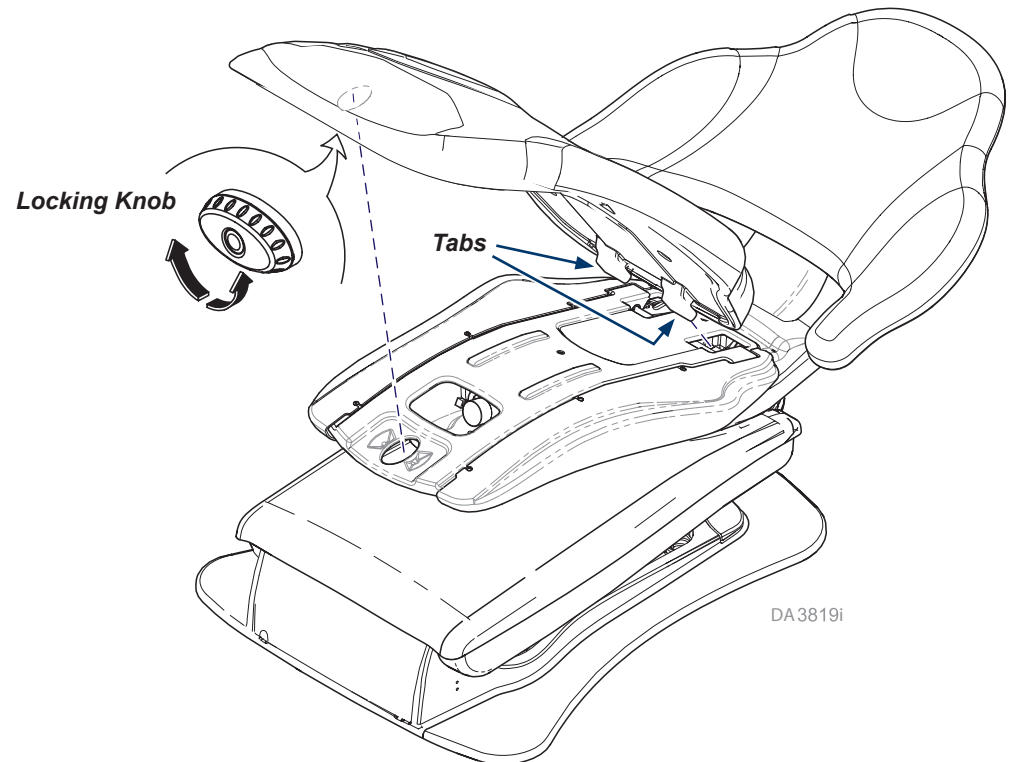


WARNING

Always disconnect the power source before removing any covers. Failure to do so may result in personal injury.

Step 2: Remove seat upholstery.

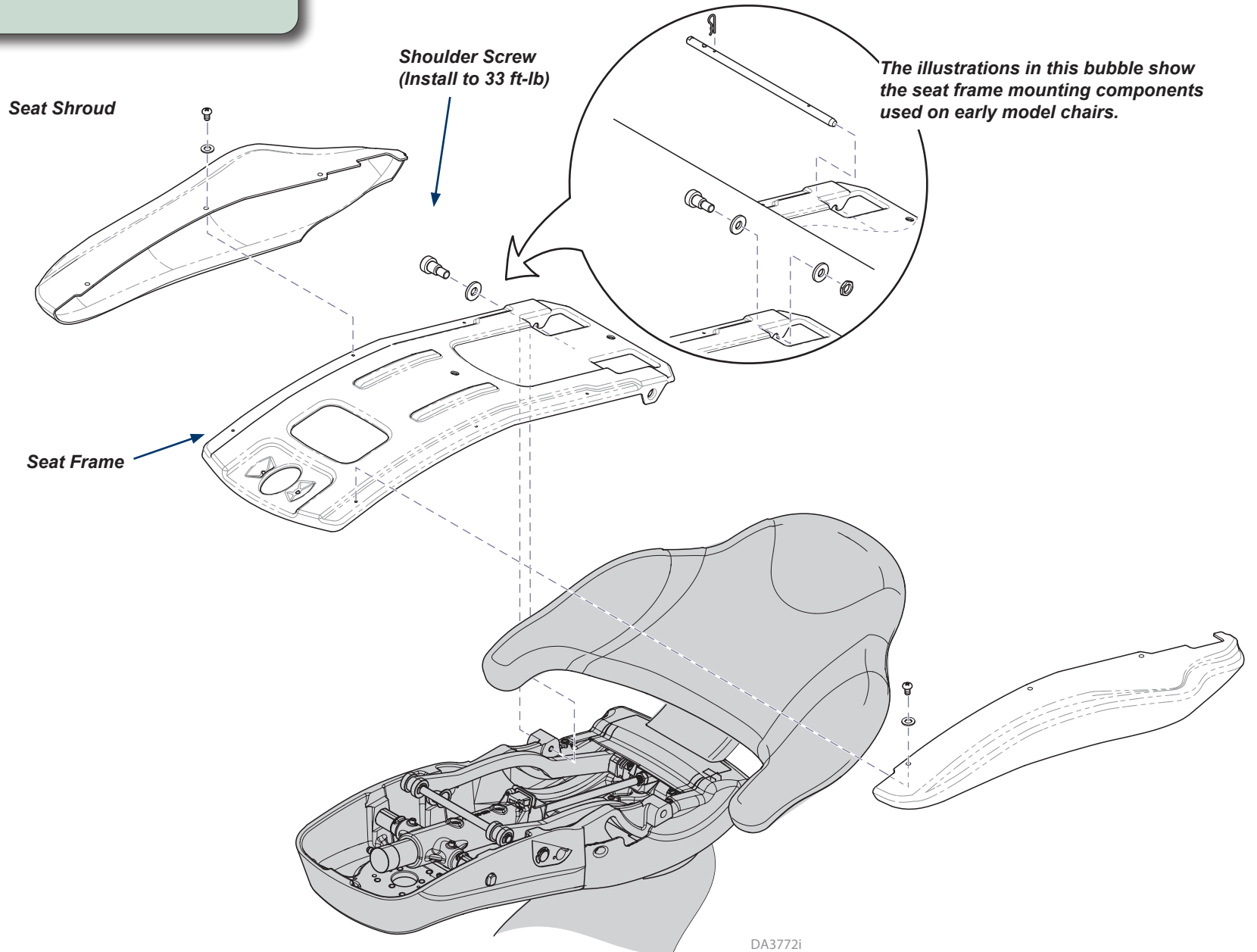
- A) Disconnect power source.
- B) Rotate seat locking knob.
- C) Lift seat upholstery, then pull to release tabs from frame.



Step 3: Remove seat shrouds and frame.

- A) Remove three screws and washers from each side.
- B) Remove seat shrouds from right and left sides.
- C) Remove seat frame and mounting components.
- D) Remove seat frame.

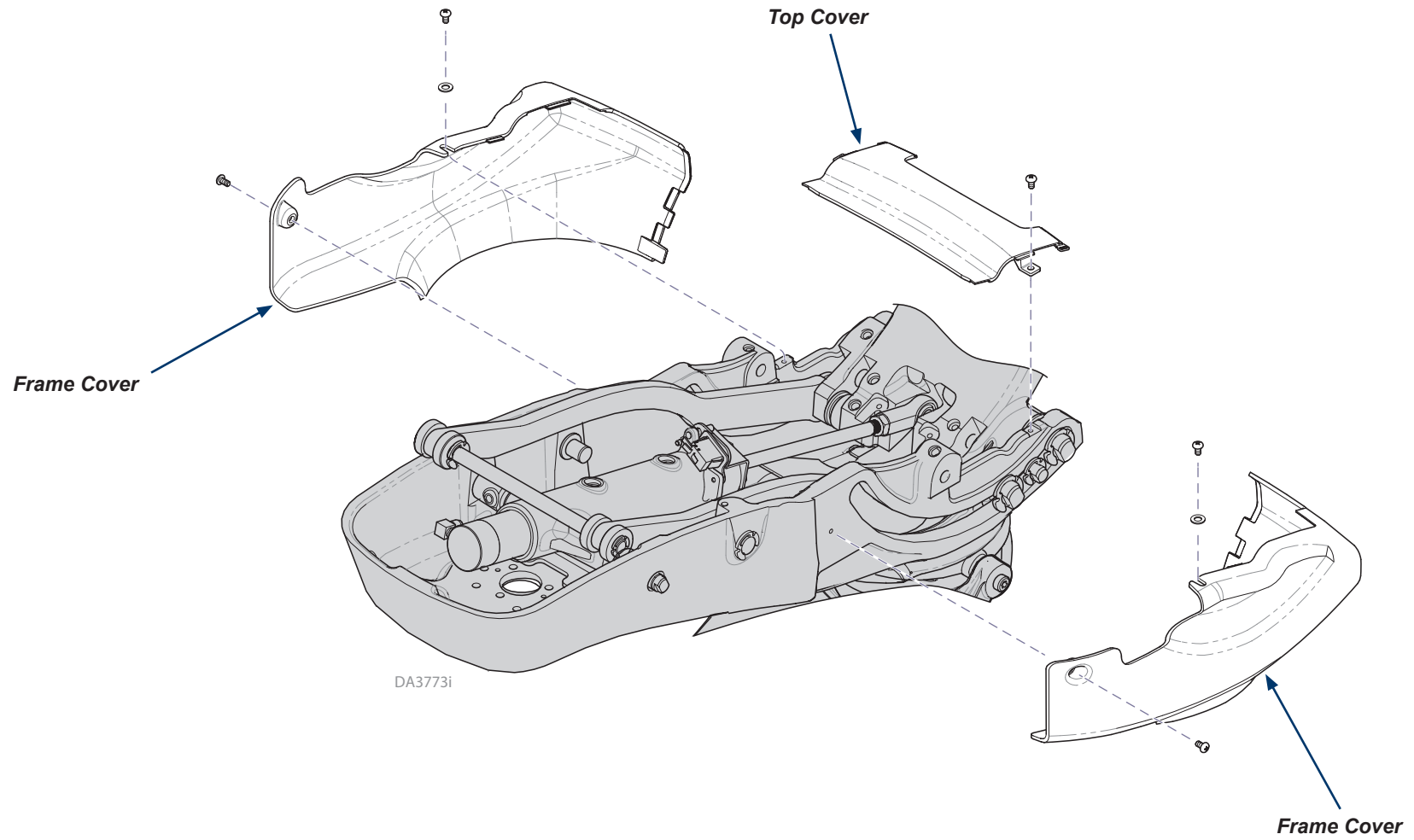
Note: Shoulder Screws need torqued down 33 ft-lb when reinstalling seat frame.



DA3772i

Step 4: Remove frame/top covers.

- A) Remove right and left frame covers.
- B) Remove top cover.



DA3773i



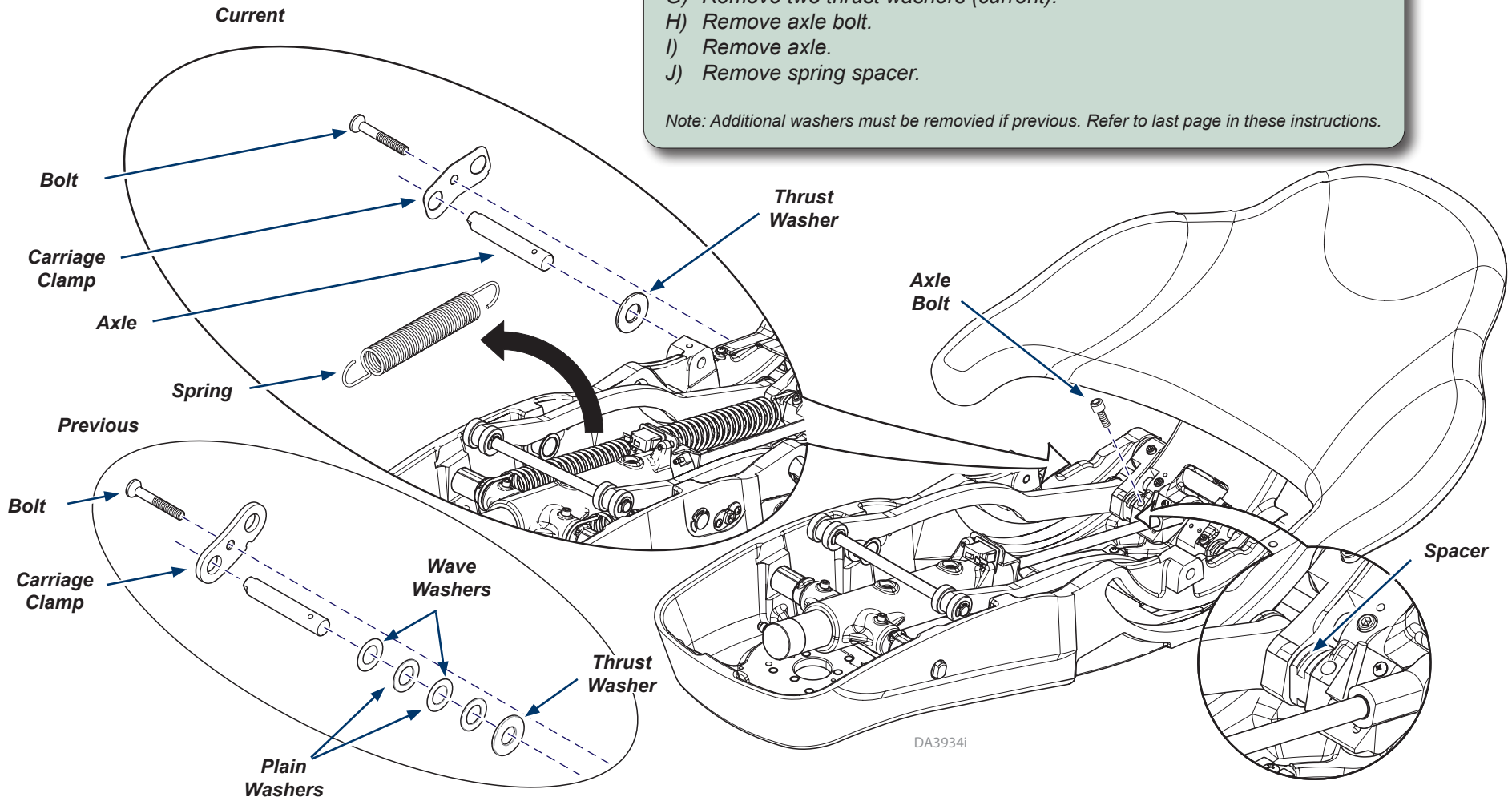
WARNING

Use extreme caution when operating the chair without covers. Always disconnect the power source before continuing procedure. Failure to do so may result in personal injury.

Step 5: Remove springs, carriage clamp, washers, and axle.

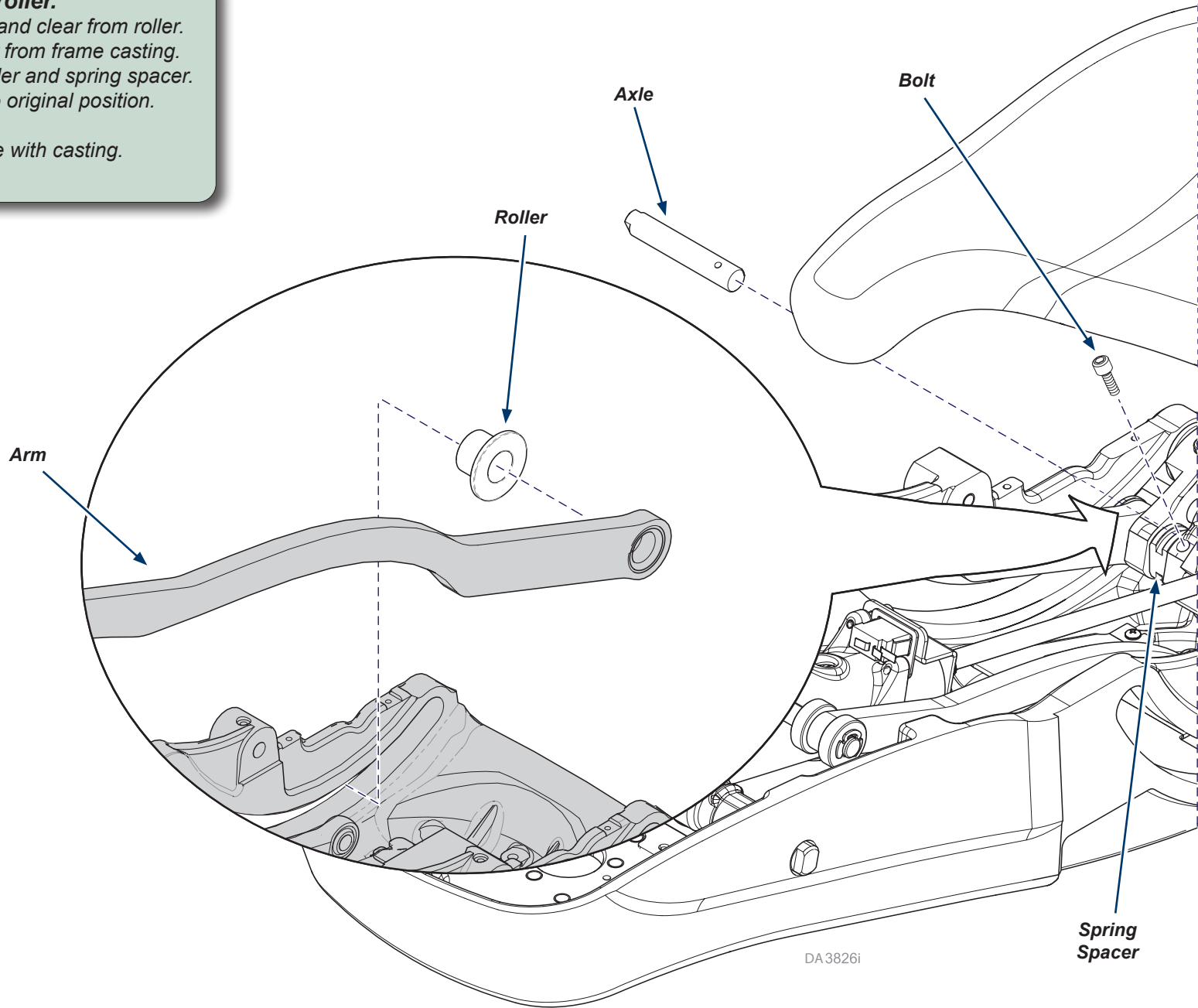
- A) Move back section (hold carriage area) towards foot end.
- B) Remove both springs.
- C) Connect power source.
- D) Move chair back up slightly.
- E) Disconnect power source.
- F) Remove bolt then carriage clamp.
- G) Remove two thrust washers (current).
- H) Remove axle bolt.
- I) Remove axle.
- J) Remove spring spacer.

Note: Additional washers must be removed if previous. Refer to last page in these instructions.



Step 6: Install roller.

- A) Move arm up and clear from roller.
- B) Remove roller from frame casting.
- C) Install new roller and spring spacer.
- D) Move arm into original position.
- E) Install axle.
- F) Align axle hole with casting.
- G) Install bolt.

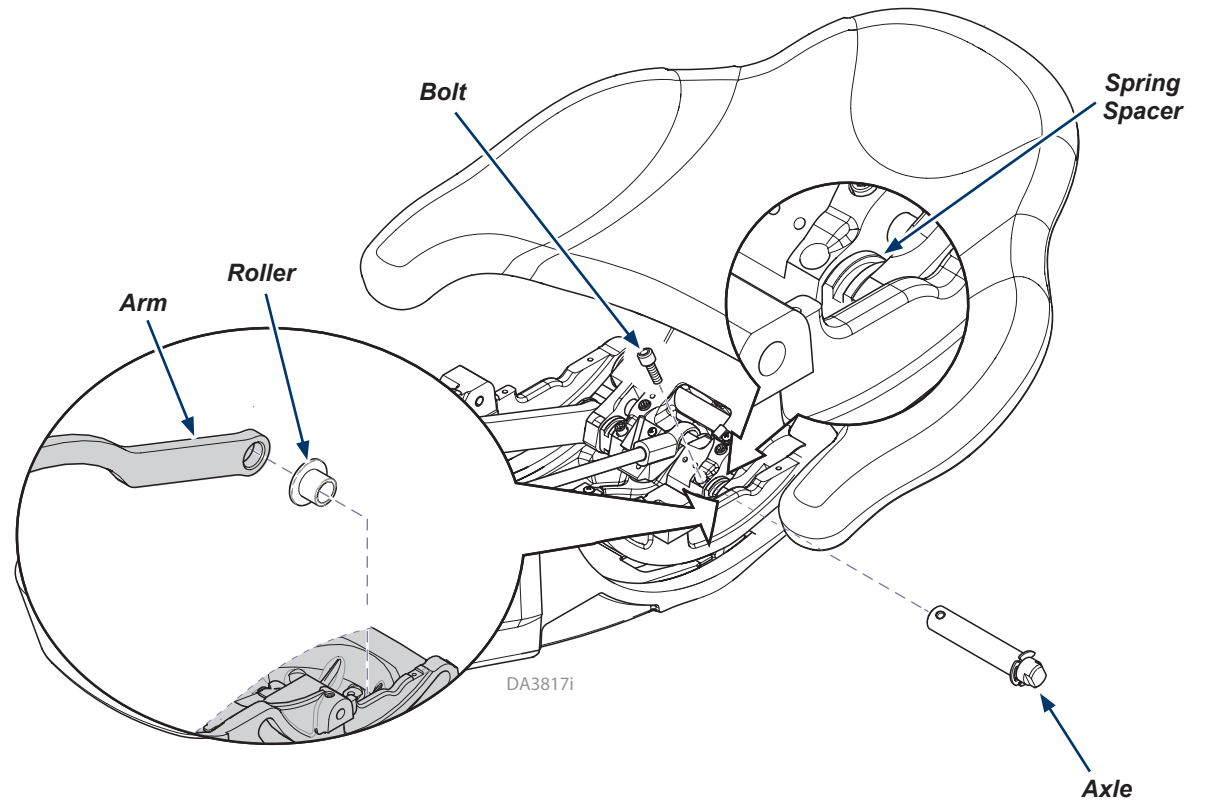


Step 7: Remove axle.

- A) Remove bolt from axle.
- B) Remove spring spacer and axle.

Step 8: Install roller.

- A) Move arm up from roller.
- B) Remove roller from frame casting.
- C) Install roller.
- D) Move arm into original position.
- E) Install axle.
- F) Install bolt.

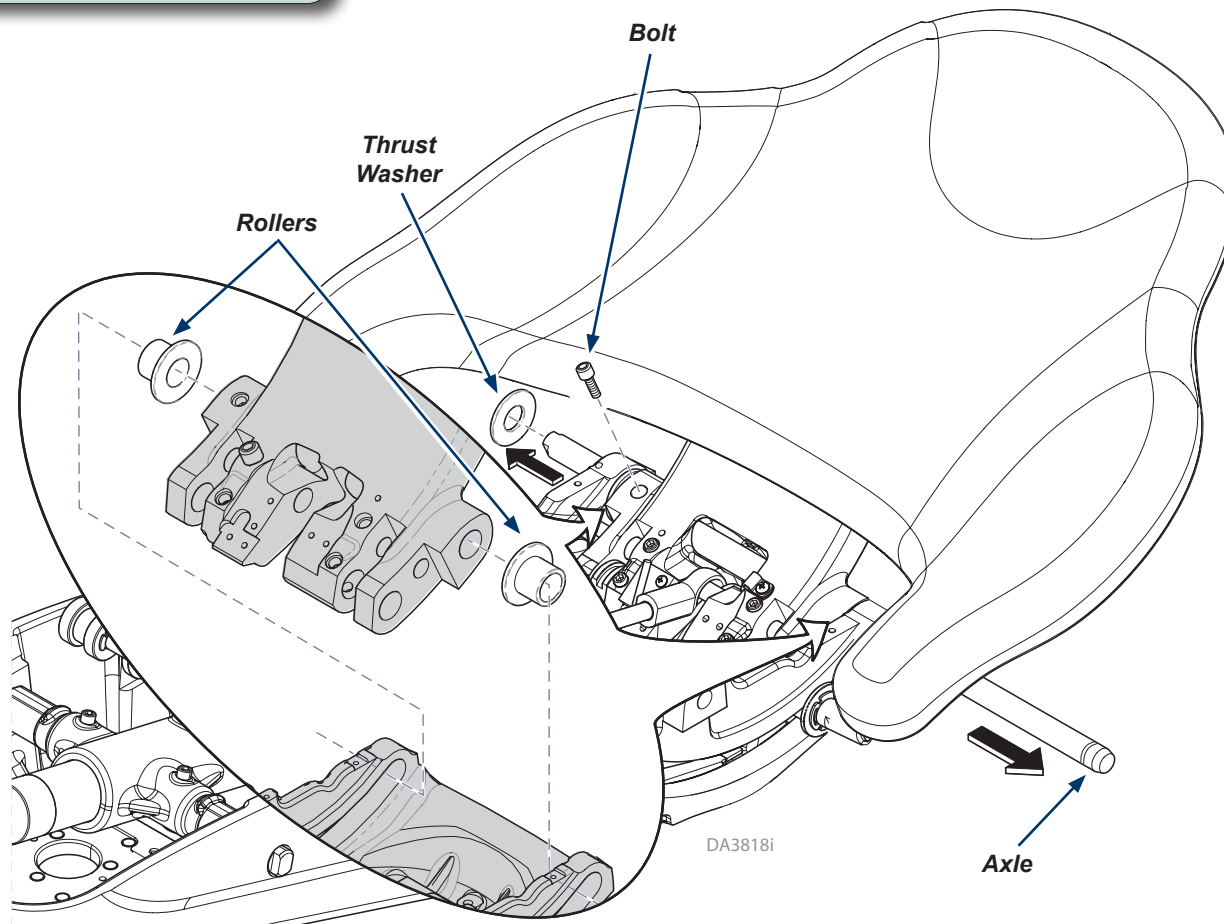


Step 9: Loosen axle.

- A) Remove bolt.
- B) Slide axle out until washer can be removed.

Step 10: Install rollers.

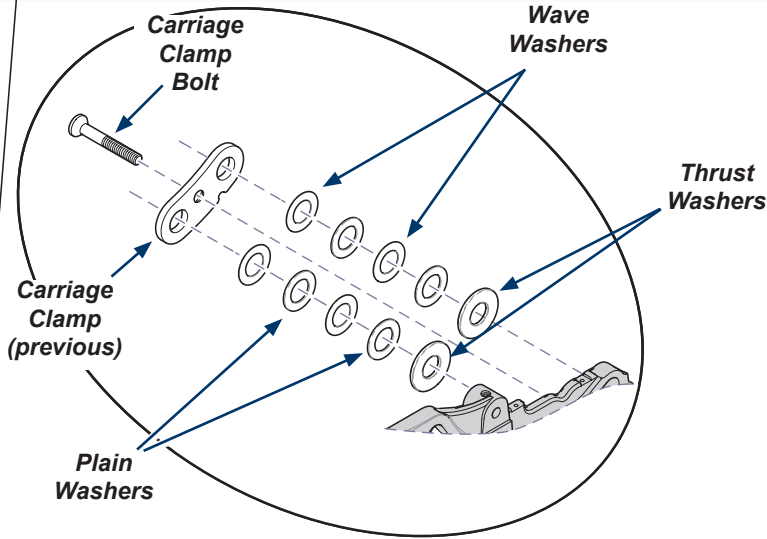
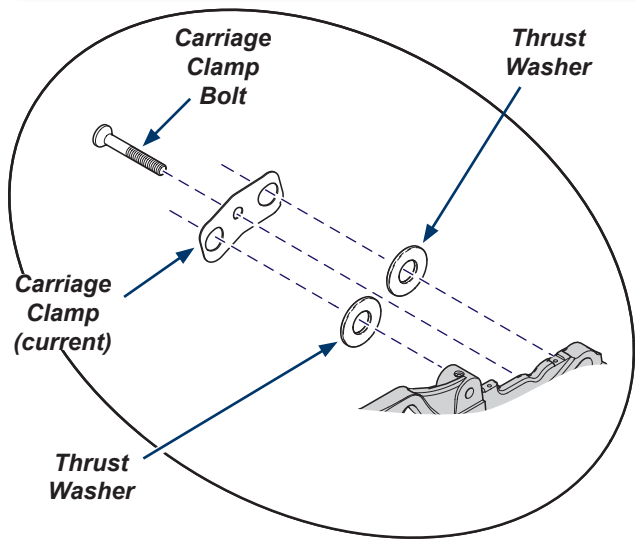
- A) Slide axle to remove rollers on each side.
- B) Install new rollers.
- C) Position thrust washer.
- D) Install bolt.



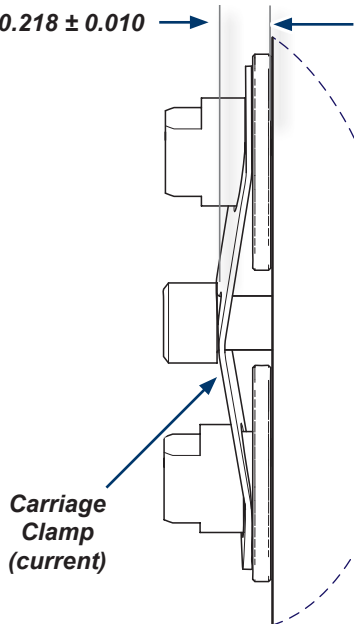
Step 11: Install carriage clamp.

- A) Install thrust washers as shown.
- B) Install carriage clamp.
- C) Tighten carriage clamp bolt with approximately spacing as shown below (see note).
- D) Connect power source.

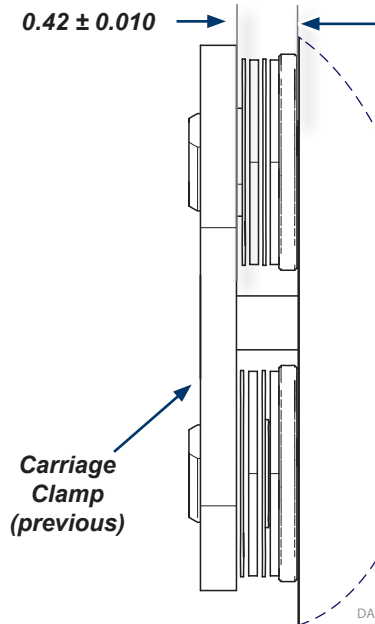
Note: Use a 7/32" allen wrench to set space. For previous use a 3/8" allen wrench to set space then remove wrench and back the bolt off one revolution.



0.218 ± 0.010



0.42 ± 0.010



WARNING

Use extreme caution when operating the chair without covers.

Step 12: Install springs.

- A) Lower chair back down and install both springs and spacers. Place arms in original positions.



Caution

Verify seat frame top cover and frame covers do not contact the carriage casting.

Step 13: Install covers.

- A) Install all covers using previous steps as a guide.
- B) Verify operation.

DA3938I