



Pediatric Scale Replacement Kit [002-1799-00]

Applies to Models:

640 (all)

309 (-005 thru -006)

409 (-004 thru -007)

Language of origin: English

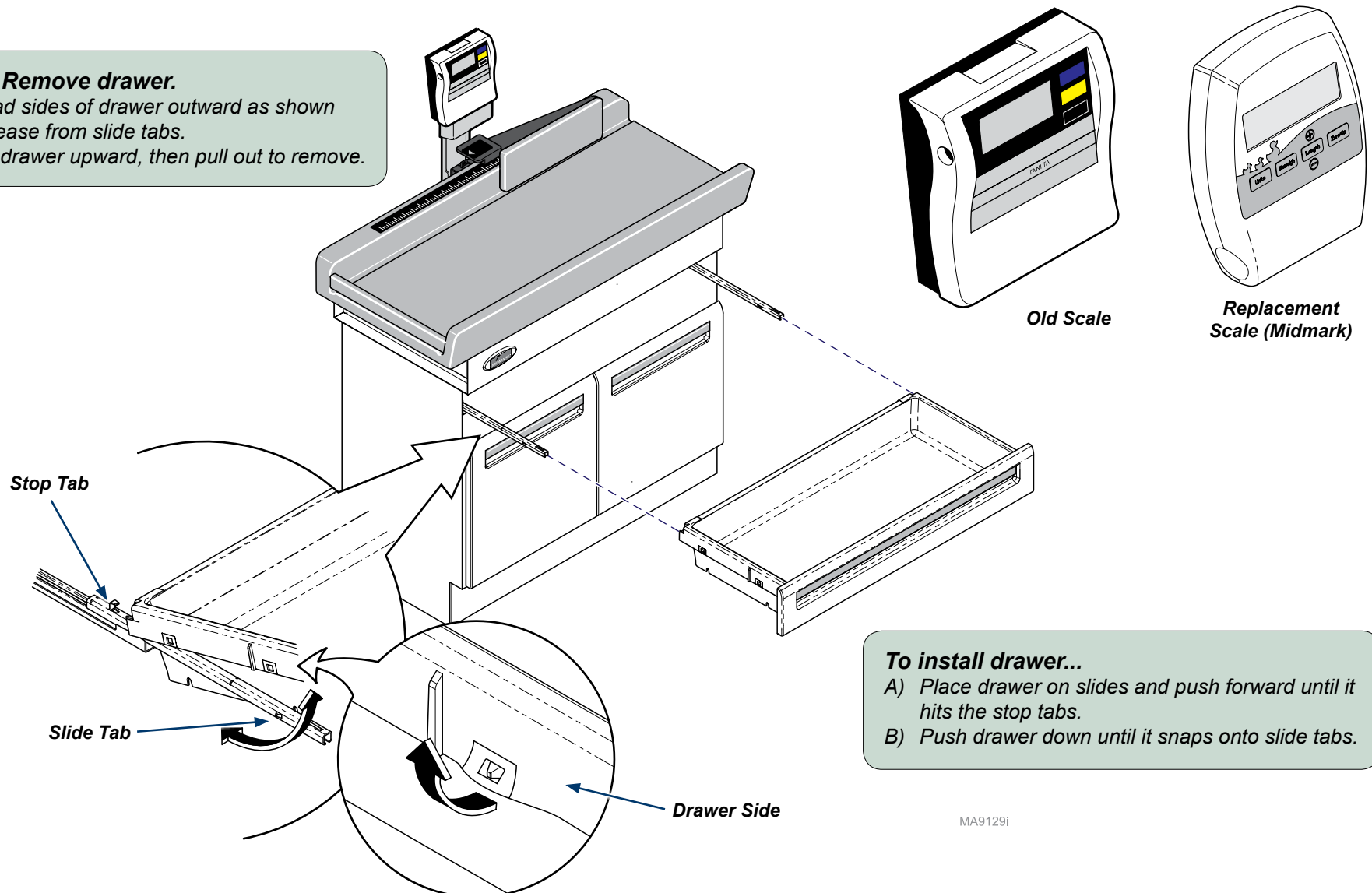


Caution

Midmark recommends to use 2 installers to perform the scale replacement.

Step 1: Remove drawer.

- A) Spread sides of drawer outward as shown to release from slide tabs.
- B) Pivot drawer upward, then pull out to remove.



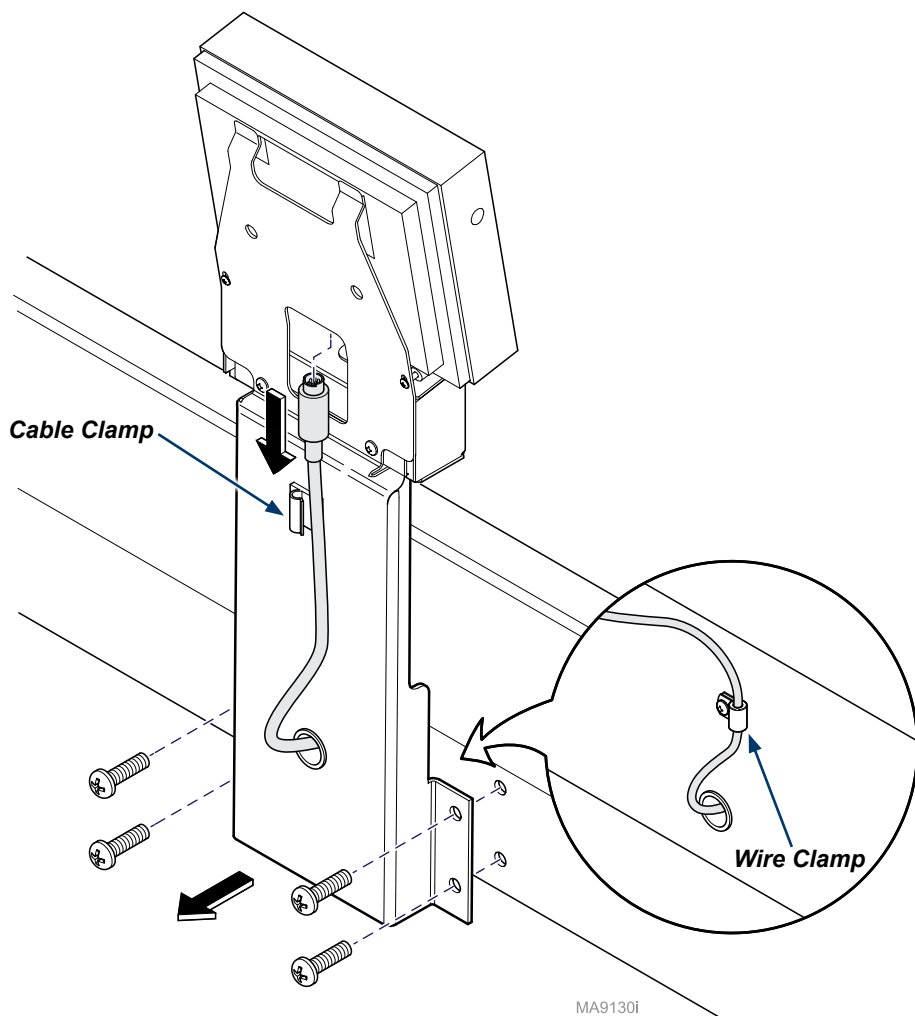
To install drawer...

- A) Place drawer on slides and push forward until it hits the stop tabs.
- B) Push drawer down until it snaps onto slide tabs.

MA9129i

Step 2: Remove digital display and bracket assembly.

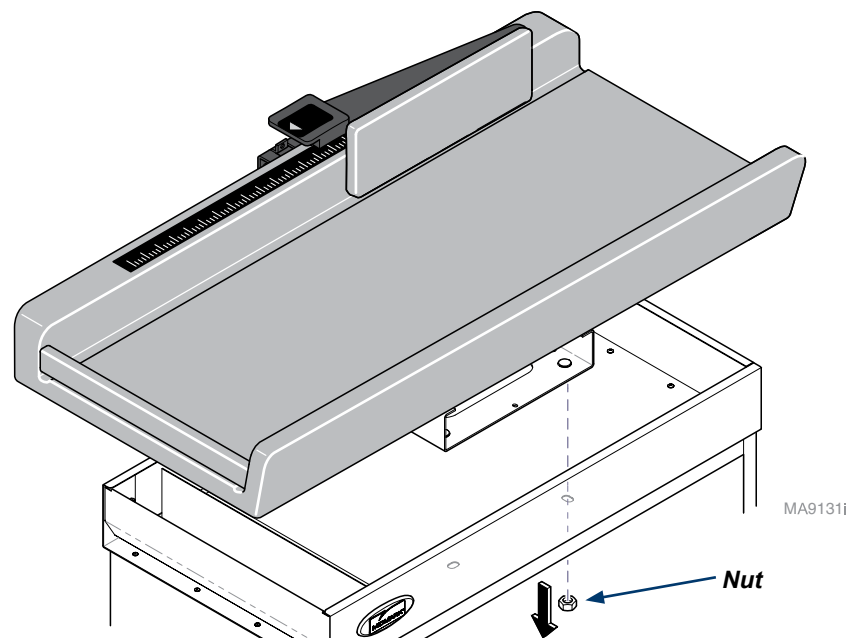
- A) Disconnect scale harness and AC adapter harness from digital display.
- B) Remove four screws from bracket assembly. (Keep for later use)
- C) Remove wire clamp from table. (Keep for later use)



Step 3: Remove upholstered top / scale platform.

- A) Using a 1/2" socket remove four nuts. (Keep for later use)
- B) Remove upholstered top / scale platform from table.
- C) Using a 3/8" wrench remove four hex screws. (Keep for later use)
- D) Separate scale platform from upholstered top and discard.

Note: Midmark recommends two installers to perform this procedure to make it easy to perform and to keep from damaging the vinyl.

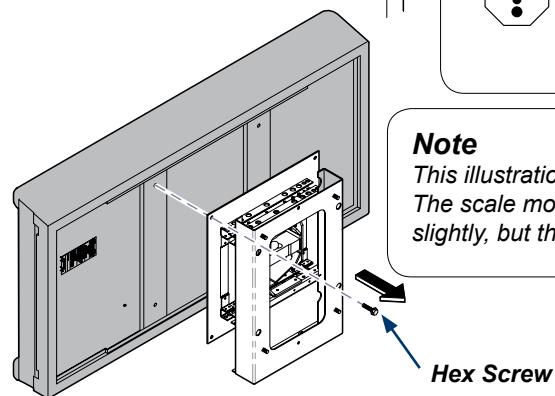


Equipment Alert

Use soft flat surface to remove scale from upholstered top in order to not damage vinyl.

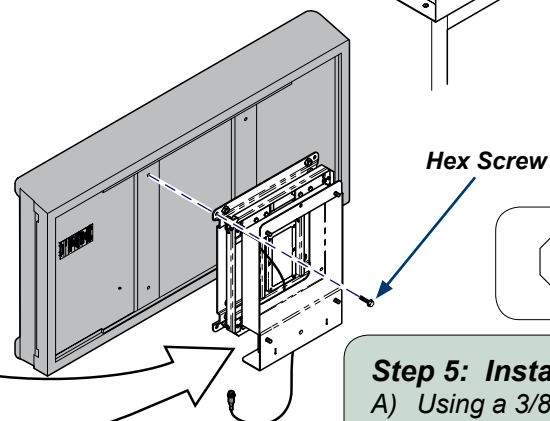
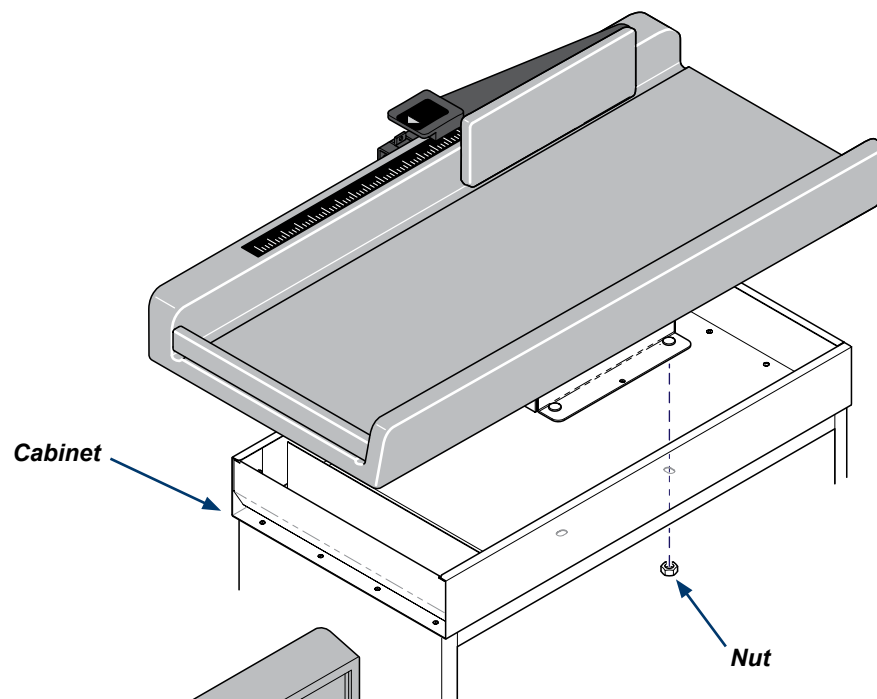
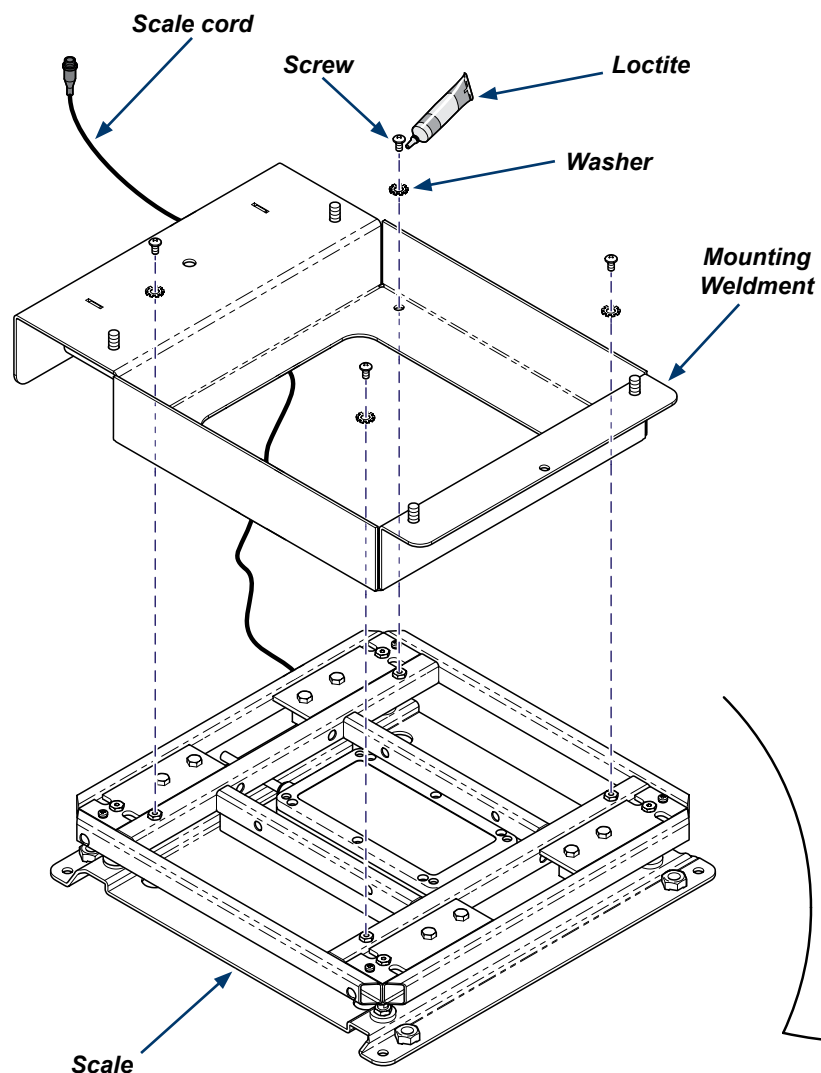
Note

This illustration shows the 640-style scale mount. The scale mount on 309 / 409 models differs slightly, but the removal / installation is the same.



Step 4: Install scale to mounting weldment.

- A) Using four screws and washers, apply Loctite provided to attach scale to mounting weldment.
- B) Make sure cord from scale is routed thru weldment.



Equipment Alert

Ensure upholstered top is parallel and flush to the cabinet back.

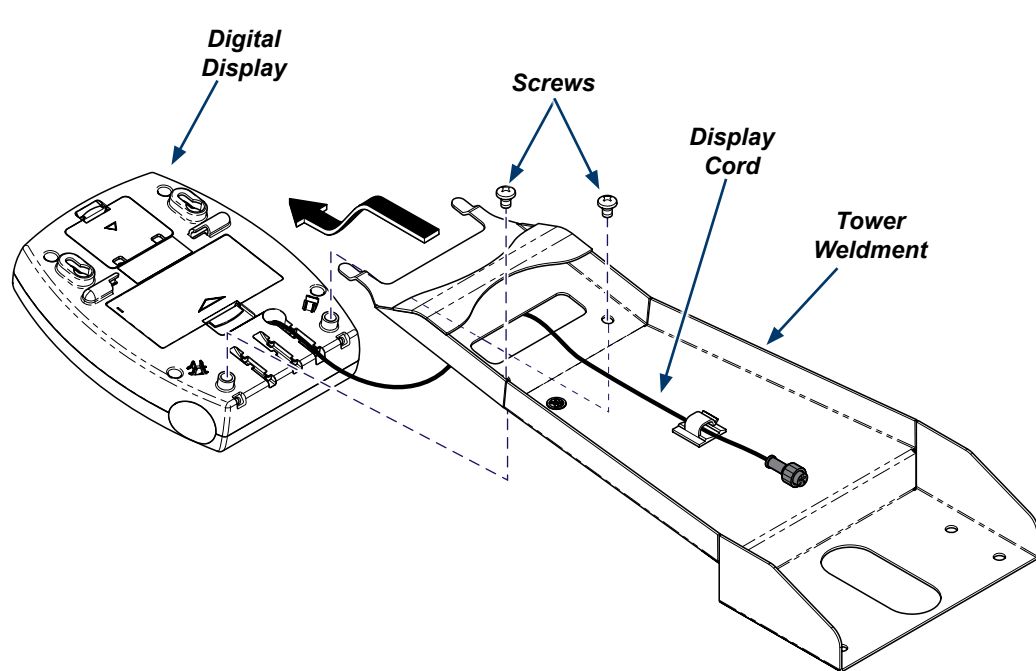
Step 5: Install upholstered top / scale platform.

- A) Using a 3/8" wrench install four hex screws for scale to upholstered top.
- B) Using a 1/2" socket install four nuts for upholstered top and scale to table.

Note: Make sure to watch that the cord does not get pinched or damaged when mounting scale to upholstered top.

Step 6: Install digital display to tower weldment.

- A) Route digital display cord thru tower weldment.
- B) Install tower weldment tabs in to back of scale.
- C) With screws provided secure digital scale to tower weldment.

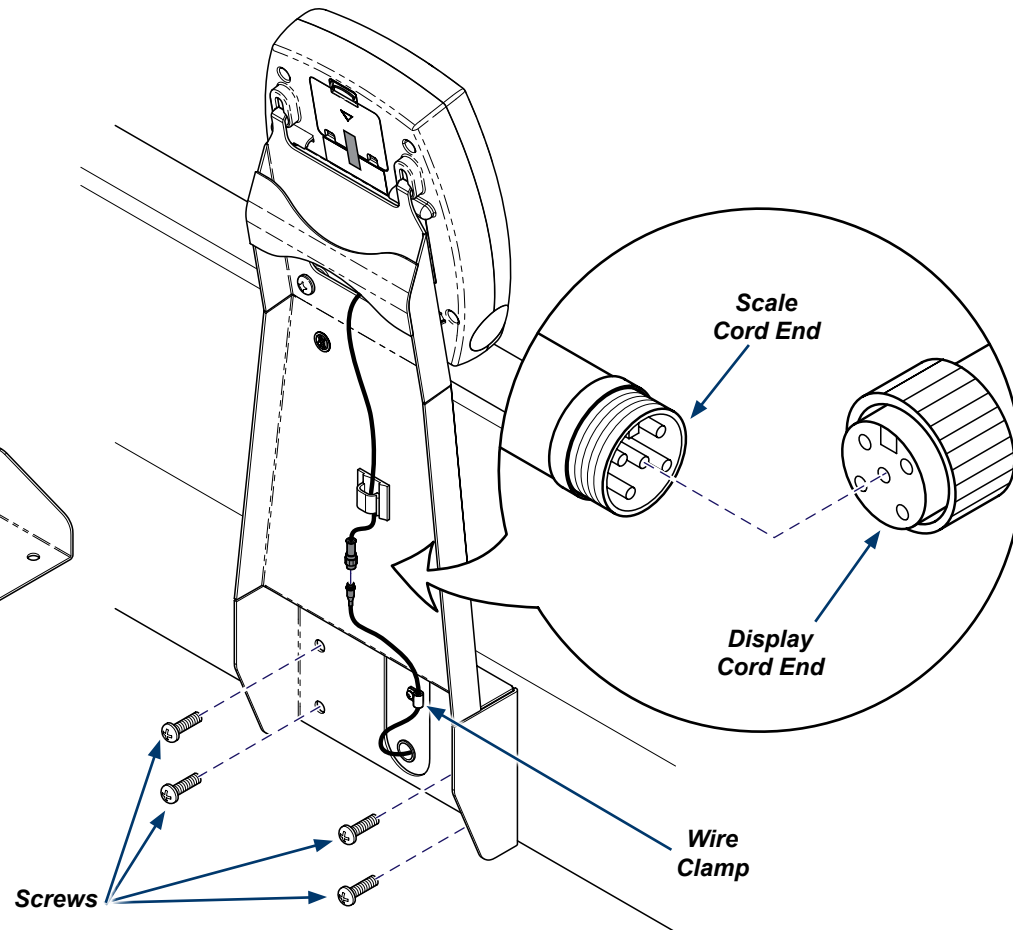


Equipment Alert

Ensure tower weldment does not make contact with upholstered top.

Step 7: Install tower weldment to table.

- A) Install tower weldment with four screws as shown.
- B) Connect cord from scale to display lining up ends.
- C) Reinstall wire clamp.



MA9135i

**Equipment Alert**

Only use Midmark supplied AC adapter.

Note

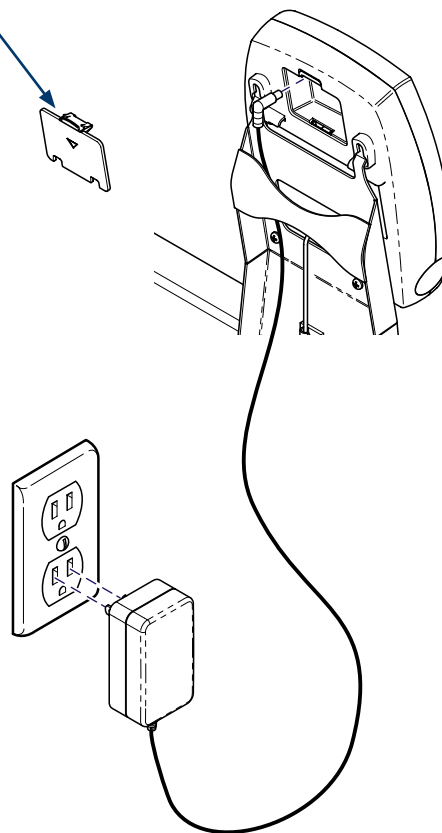
Communication ports are intended for Midmark Service personnel only.

To connect AC adapter cable...

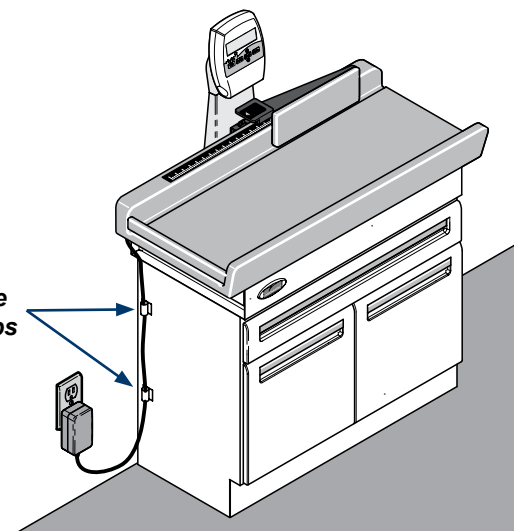
- A) Remove tape and access cover from scale.
- B) Plug adapter cable into AC port display.
- C) Connect adapter cable plug to outlet.
- D) Secure cable with existing cable clamps.
- E) Install cover and remove tape.

Note: If calibration is required please refer calibration procedure on next pages..

Access
Cover



Cable
Clamps



Calibration Procedure



Equipment Alert

The Two Point calibration will calibrate the scale using only one weight that can be user defined. This calibration procedure is effective and can be used in the field with a test weight.



Step 1: Enter Setup mode.

- A) Press and hold Reweigh and Zero together.
- B) Release both buttons when the display reads **CAL n**.



Step 2: Press + button to change display to **CAL y**.



Step 3: Press length.

Note: Display reads **CAL 0**

Step 4: Remove all weight from the scale platform.

Note: During calibration be sure vibration and air currents are not present.

Calibration Procedure continued...



Equipment Alert

A 30 lb weight is required for this procedure.

Step 5: Calibrate

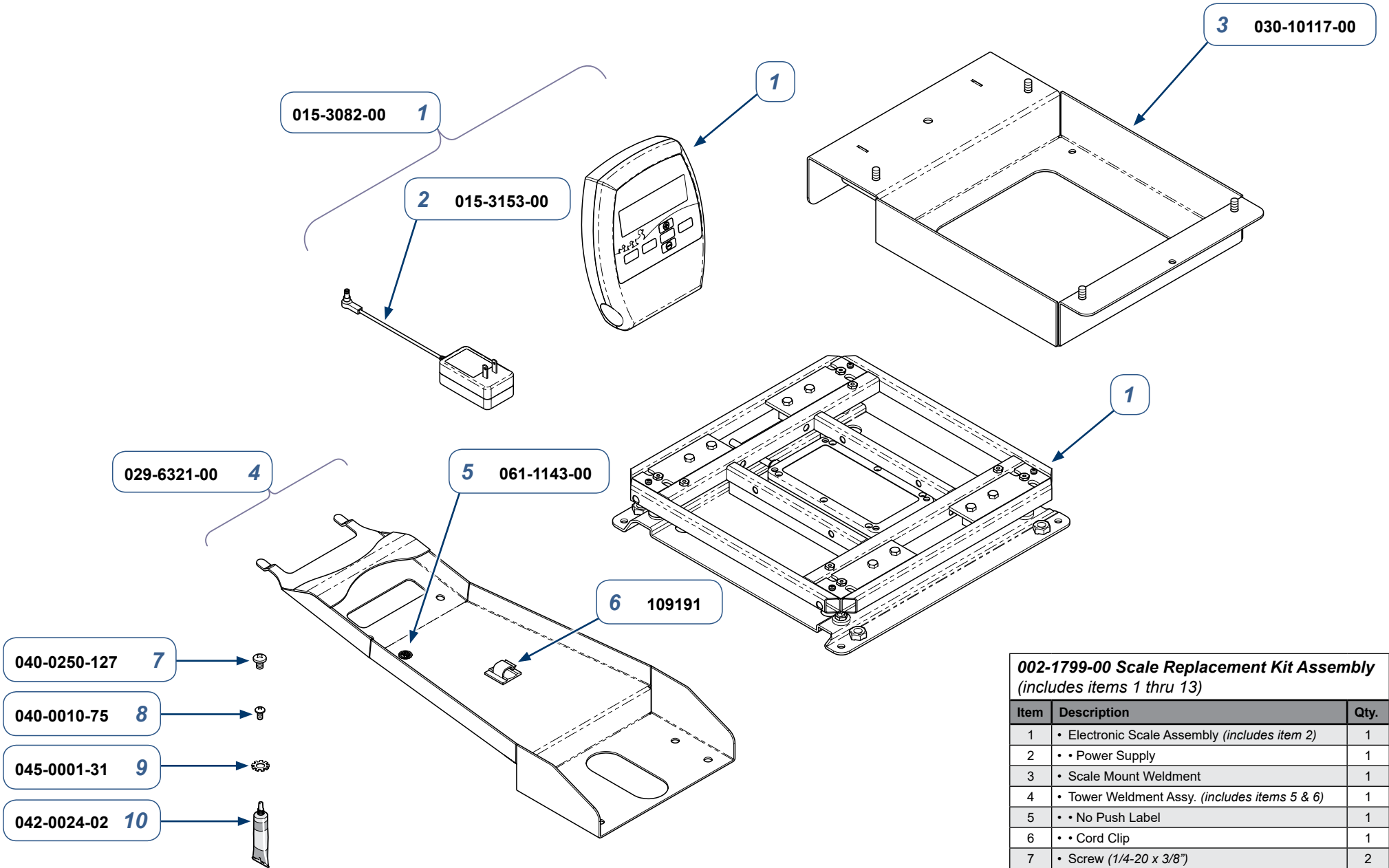
- A) Press length to perform zero calibration.
- B) The display will count down to zero. The counter will reset if too much motion (Er nn) is detected.
- C) The scale will display 40.00, representing a 40 lbs span point calibration.
- D) Change the calibration weight by using the + or - buttons to scroll the weight value to 30 lbs.
- E) Place a 30 lbs weight on the platform.
- F) Press length to accept the span weight value. The display will count down to zero and return to the weigh mode.

Note: The span weight value can be changed to any weight between 5 and 40 LB. For maximum accuracy, use between 20 lbs to 40lbs.

Note

If Erng appears on the display, the span calibration has detected a negative range. If this error persists, consult the raw counts table. The following table shows the acceptable Raw Counts for no load and full load. Raw Counts can be viewed through the last setup parameter. Refer to parameter setup on the next page for more information regarding parameter viewing. If the scales raw count is not within the ranges specified in the following table, replace the scale.

| Calibration Requirement in Raw Counts | Minimum | Maximum |
|--|---------|---------|
| Zero Calibration Point | 200 | 20000 |
| Required Calibration Span (100% of Capacity Scale Cal Point - Zero Cal Point) | 6000 | 30000 |
| Required Calibration Span (5% of Capacity Scale Cal Point - Zero Cal Point) | 300 | 1500 |



| 002-1799-00 Scale Replacement Kit Assembly (includes items 1 thru 13) | | |
|--|--|------|
| Item | Description | Qty. |
| 1 | • Electronic Scale Assembly (includes item 2) | 1 |
| 2 | • • Power Supply | 1 |
| 3 | • Scale Mount Weldment | 1 |
| 4 | • Tower Weldment Assy. (includes items 5 & 6) | 1 |
| 5 | • • No Push Label | 1 |
| 6 | • • Cord Clip | 1 |
| 7 | • Screw (1/4-20 x 3/8") | 2 |
| 8 | • Screw (#10-24 x 3/8") | 4 |
| 9 | • Washer (#10 External tooth lock) | 4 |
| 10 | • Loctite Adhesive (242) | 1 |
| 11 | • 003-2725-00 Install Instructions (not shown) | 1 |
| 12 | • 003-2589-00 Quick Reference (not shown) | 1 |
| 13 | • 003-2583-99 640 User Guide (not shown) | 1 |

| | |
|-------------------------|-----|
| Serial Numbers / Dates: | all |
|-------------------------|-----|