

Cylinder Rod End Replacement Kit [002-2068-00]

Contents:
Installation 1

Special Tools:
Torque wrench

Language of origin: English

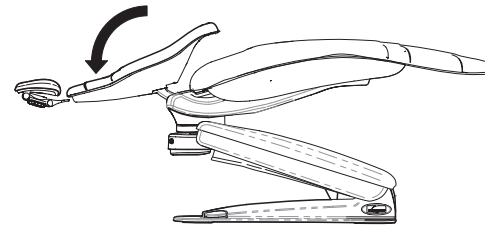
Note

Torque wrench should be capable of 33 ft-lbs (44.7 Nm).

Step 1: Inspect components.

Step 2: Position chair.

- A) Move the back section to FULL DOWN position.
- B) Raise / lower the chair to a comfortable working height.

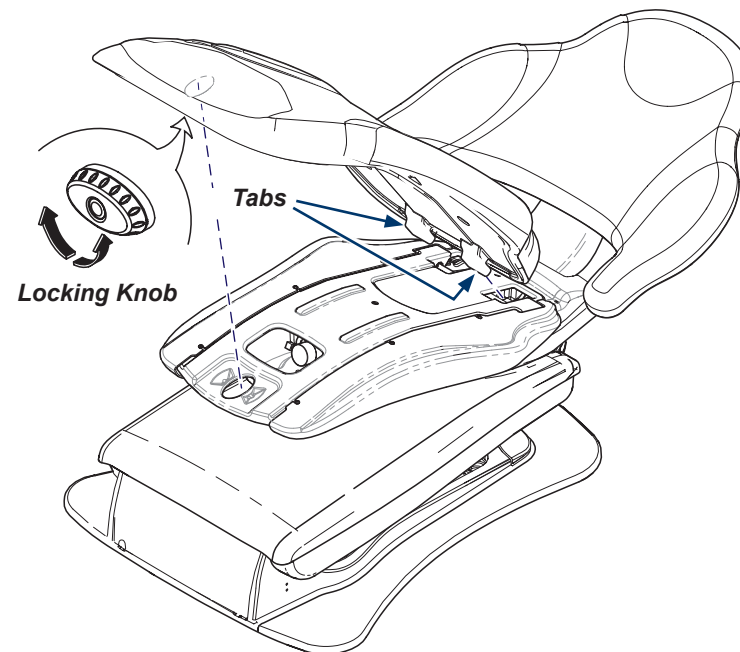


WARNING

Always disconnect the power source before removing any covers. Failure to do so may result in personal injury.

Step 3: Remove seat upholstery.

- A) Disconnect power source.
- B) Rotate seat locking knob.
- C) Lift seat upholstery, then pull to release tabs from frame.



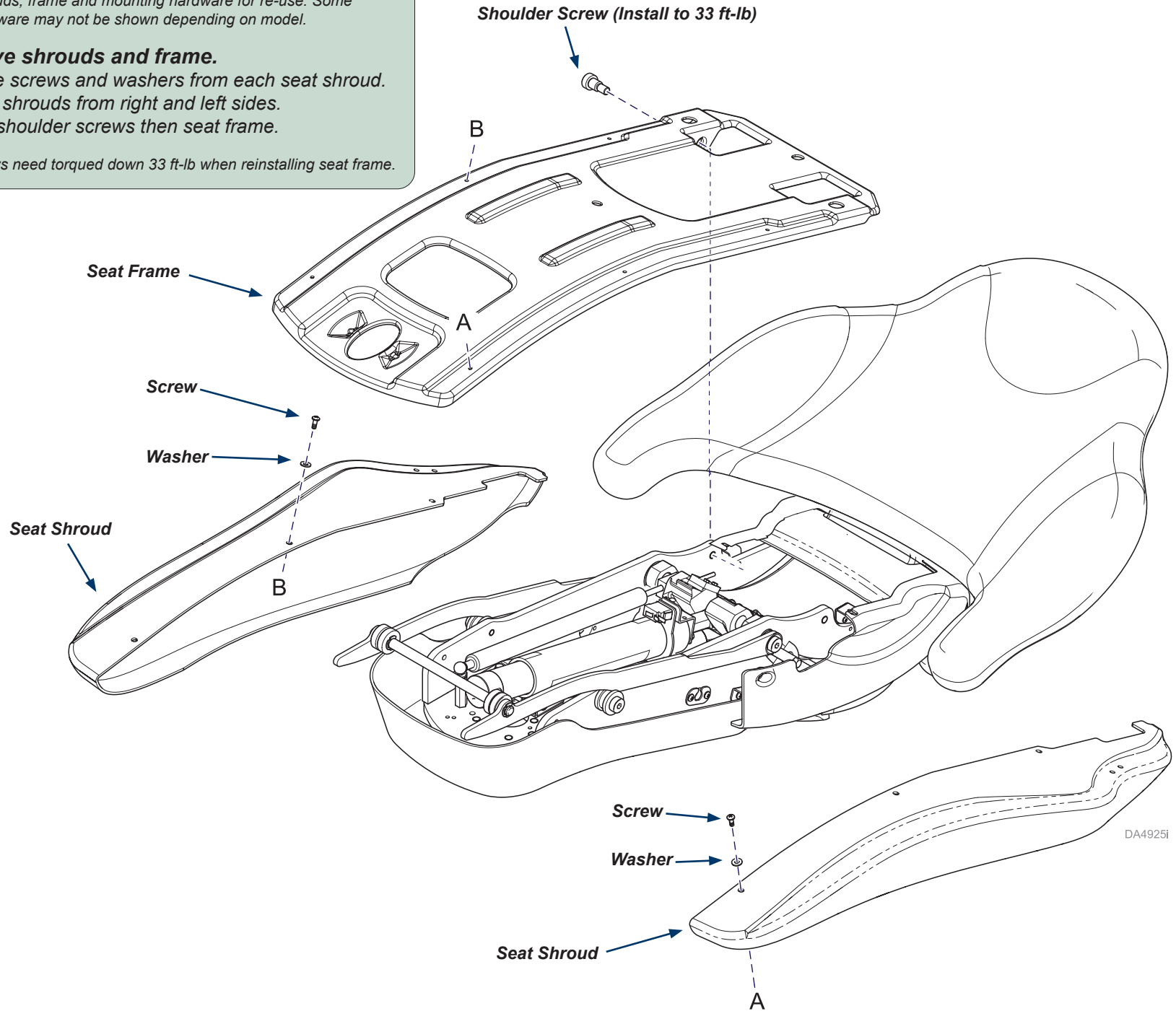
DA4596i

Note: Retain all shrouds, frame and mounting hardware for re-use. Some mounting hardware may not be shown depending on model.

Step 4: Remove shrouds and frame.

- A) Remove three screws and washers from each seat shroud.
- B) Remove seat shrouds from right and left sides.
- C) Remove two shoulder screws then seat frame.

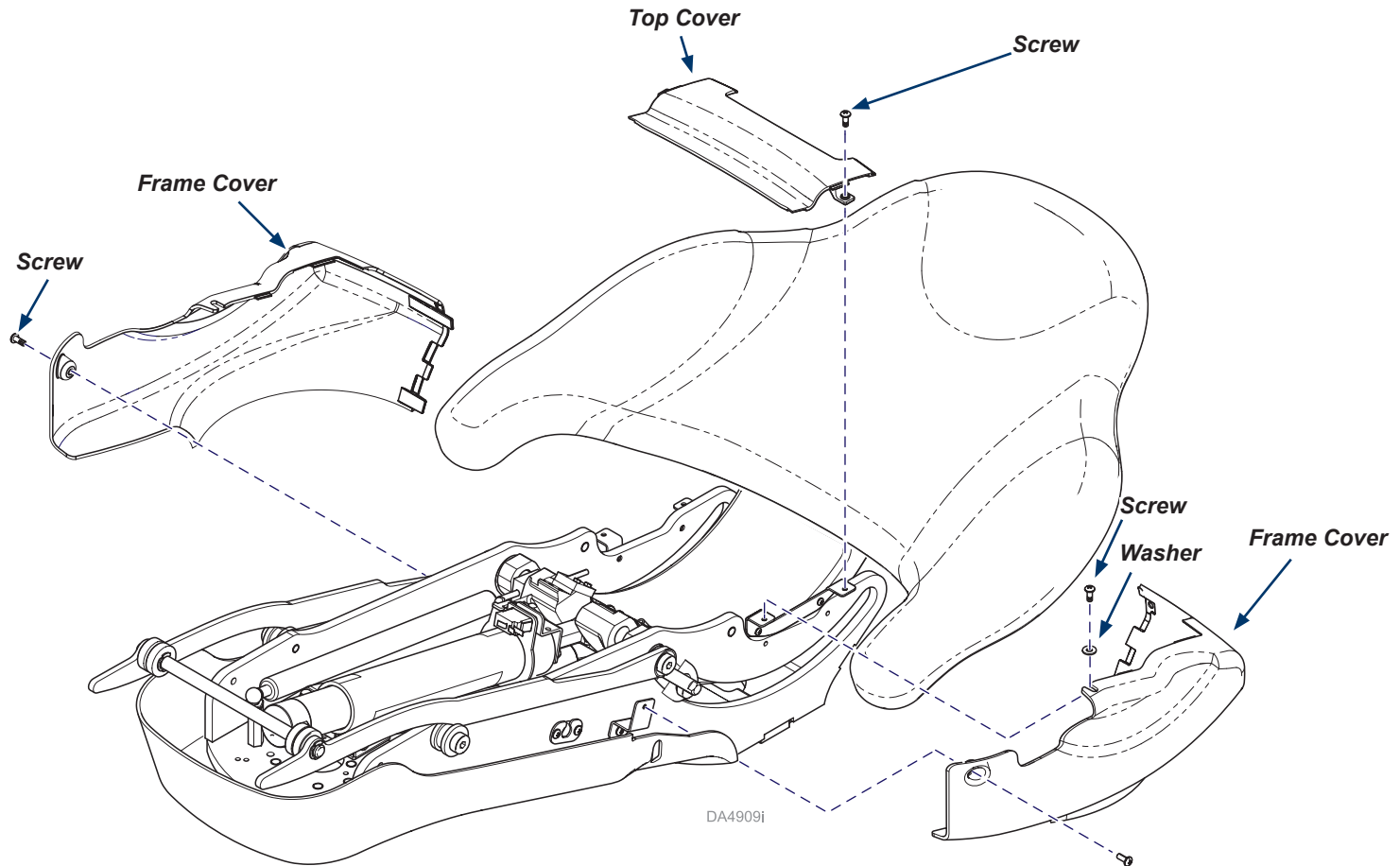
Note: Shoulder Screws need torqued down 33 ft-lb when reinstalling seat frame.



Note: Retain all covers and mounting hardware for re-use.

Step 5: Remove frame/top covers.

- A) Remove screws and washer then frame covers.
- B) Remove two screws then top cover.

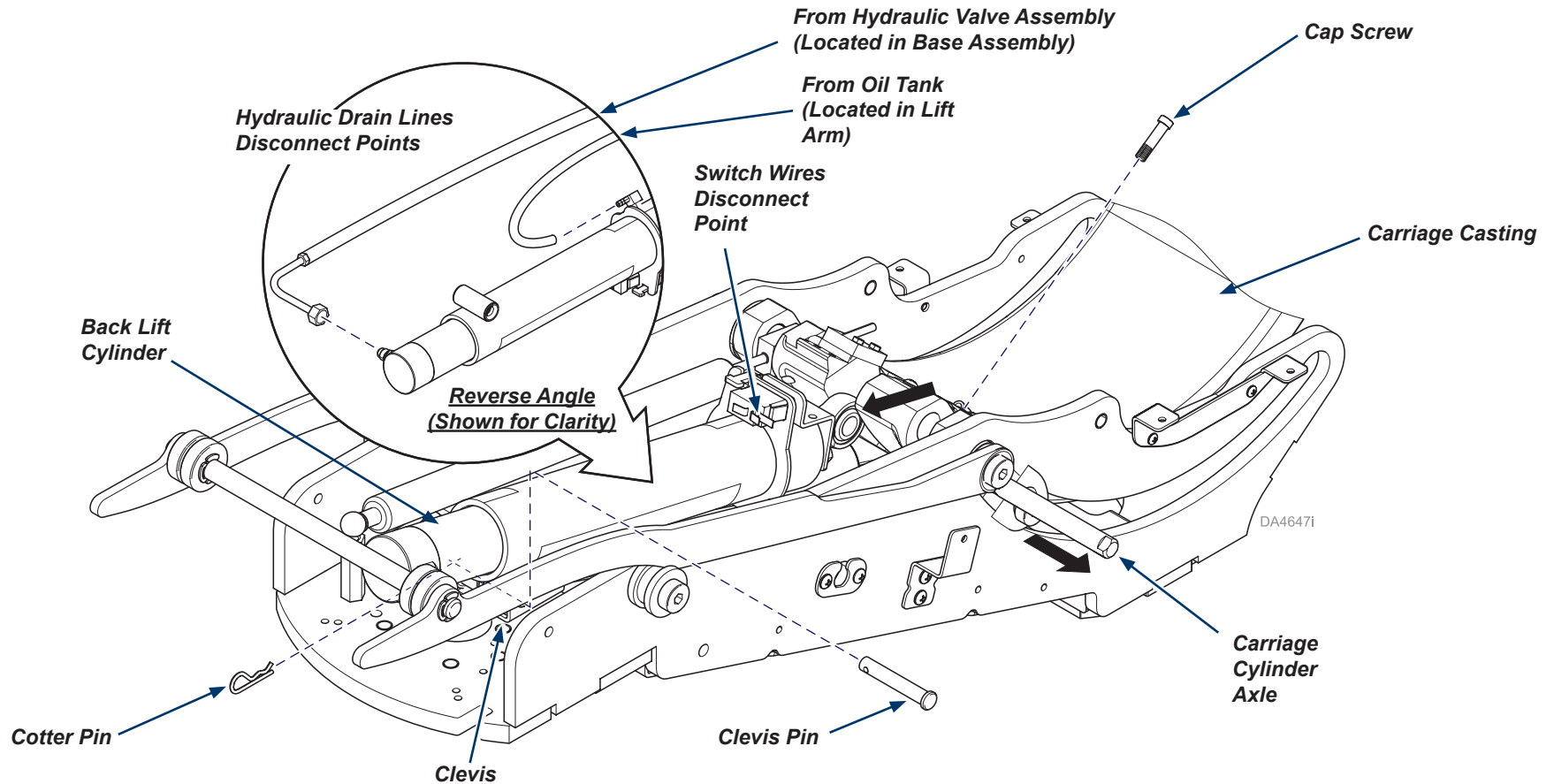


Step 6: Remove back lift cylinder

- A) Remove any cable ties from the cylinder (note locations).
- B) Disconnect switch wires from terminals.
- C) Ensure power is removed from hydraulic functions.
- D) Disconnect hydraulic lines from cylinder then install plugs to prevent fluid leaking.
- E) Remove clevis pin from cotter pin.
- F) Remove clevis pin.
- G) Remove cap screw from axle in carriage casting.
- H) Remove axle from carriage casting.
- I) Remove back lift cylinder.

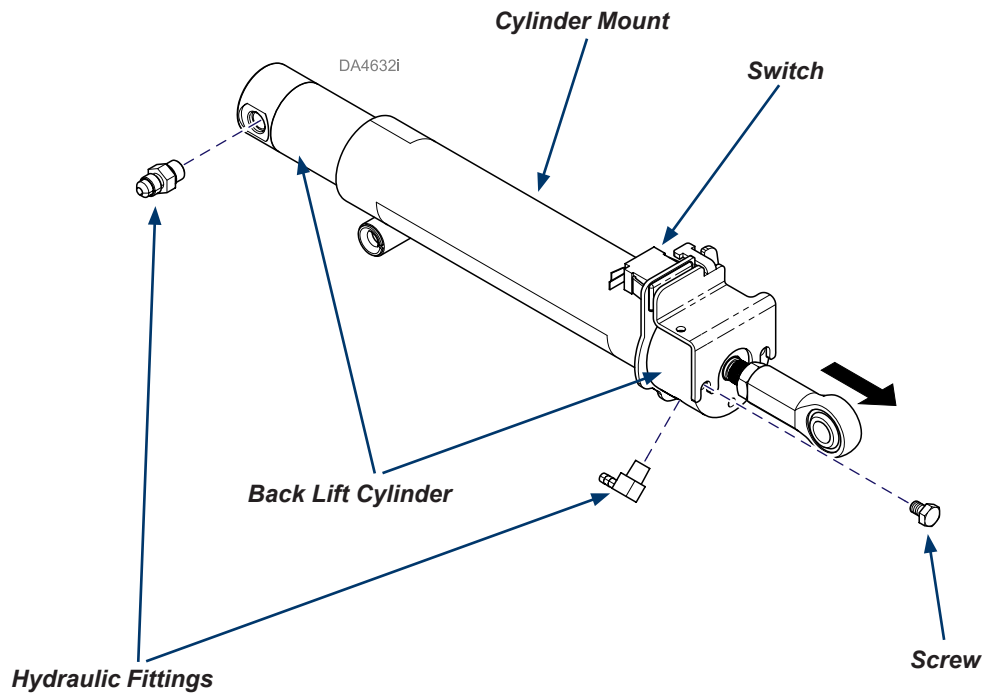
Note

Partial frame casting shown for clarity.



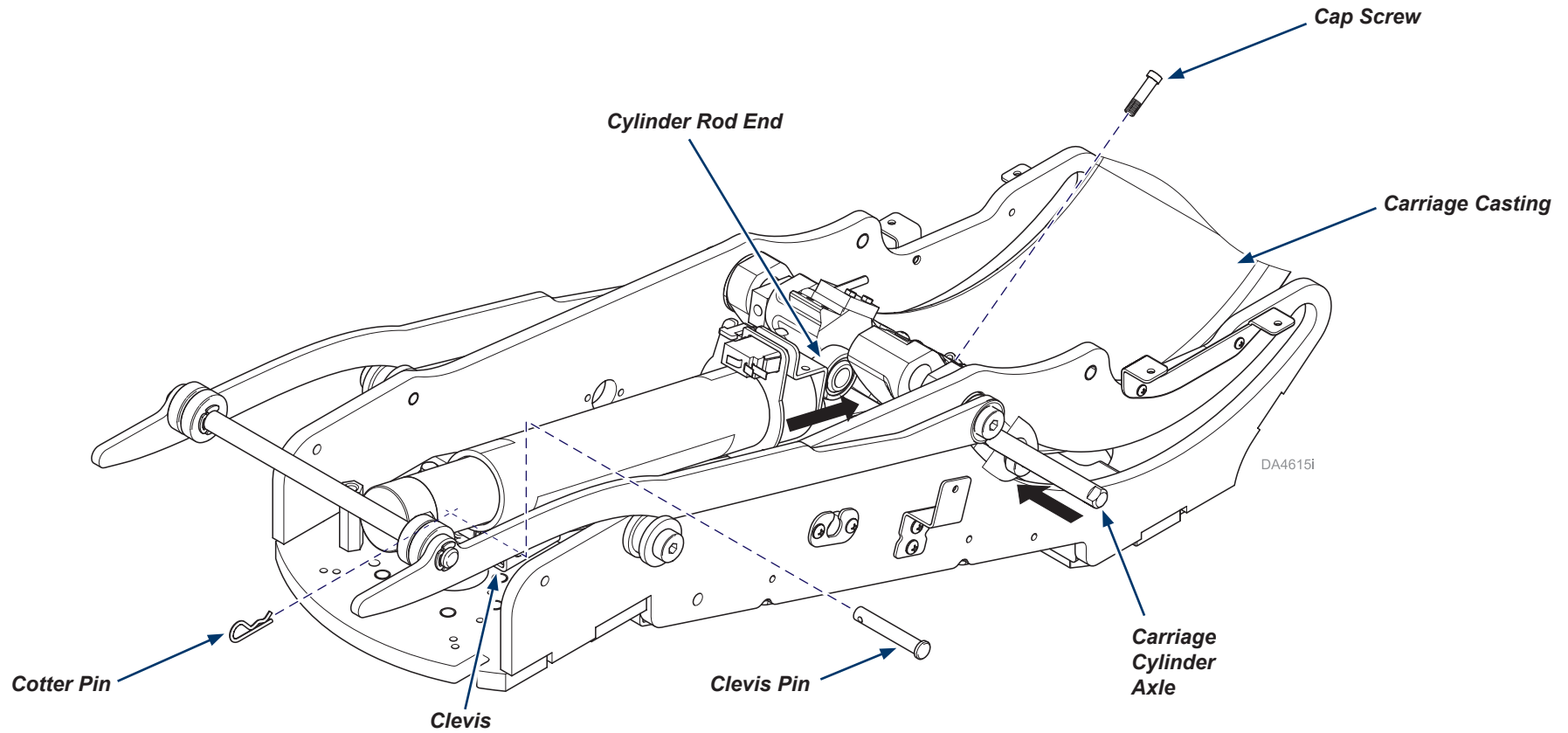
Step 7: Install cylinder rod end

- A) Remove hydraulic fittings from cylinder.
- B) Remove screws from bracket on cylinder.
- C) Install new back lift cylinder into cylinder mount.
- D) Install screws to limit switch bracket to back lift cylinder.
- E) Install hydraulic fittings to back lift cylinder.



Step 8: Install clevis pin, carriage cylinder axle and cap screw.

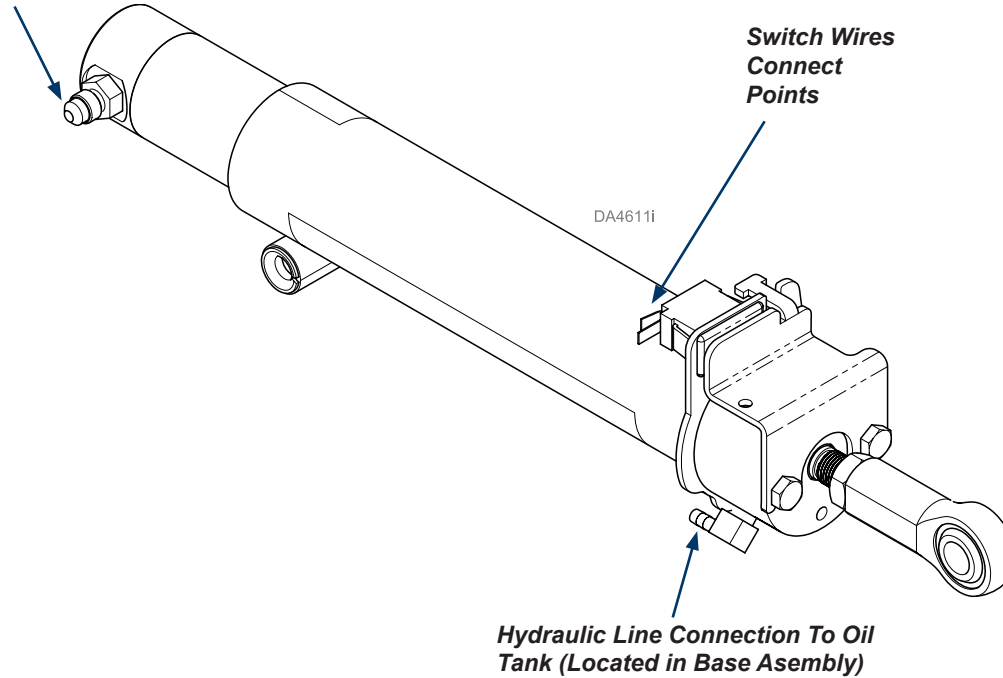
- A) Place new back lift cylinder into the chair weldment.
- B) Install clevis pin.
- C) Install cotter pin.
- D) Install carriage cylinder axle to carriage casting while positioning axle to go through cylinder rod end.
- E) Install cap screw to axle in carriage casting.



Step 9: Install back lift cylinder

- A) Install cable ties on the cylinder in previous locations.
- B) Connect hydraulic lines to cylinder as shown.
- C) Connect switch wires to terminals.

Hydraulic Line Connection To Hydraulic Valve Assembly (Located in Base Assembly)



Switch Wires Connect Points

Hydraulic Line Connection To Oil Tank (Located in Base Assembly)



Caution

Verify seat frame top cover and frame covers do not contact the carriage casting.

Step 10: Finalize installation.

- A) Install covers/components (reverse Steps 3 through 5).
- B) Connect chair to power source.
- C) Ensure power is restored for hydraulic functions.
- D) Verify operation.



Because we care.