

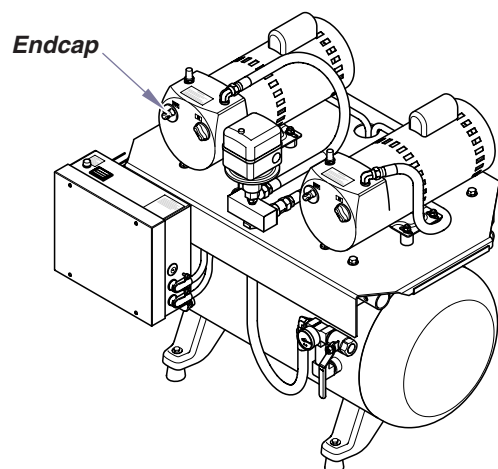
Intended Use:

To remove deposits built up on pump vanes and maintain proper vane performance.



Caution

Always flush pump in a well ventilated area.

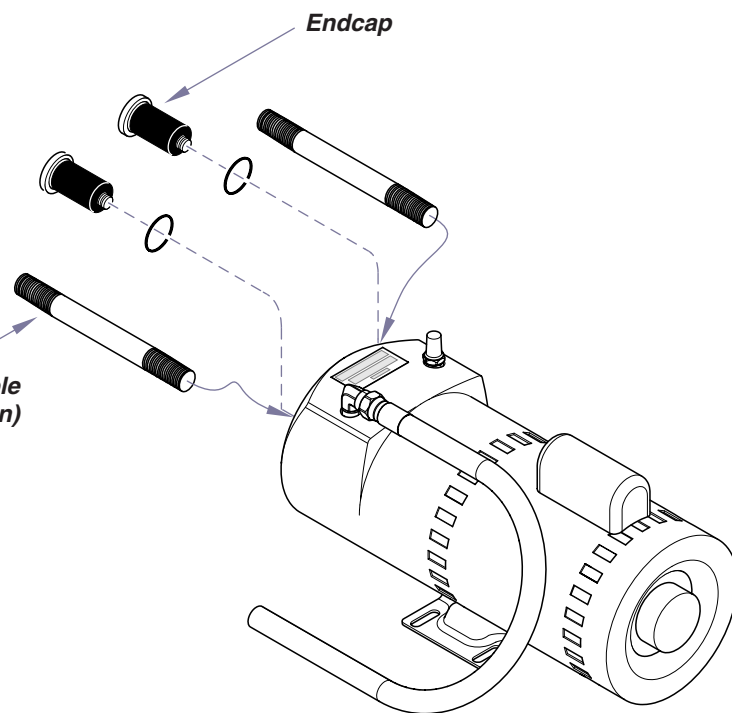


Endcap

Step 1: Install Steel Pipe Nipples.

- Disconnect main power supply.
- Remove both Endcaps.
- Screw in Steel Pipe Nipples.
- Restore power and turn pump on.

3/8" NPT x 4" Long Steel Pipe Nipple
(Supplied by Service Technician)



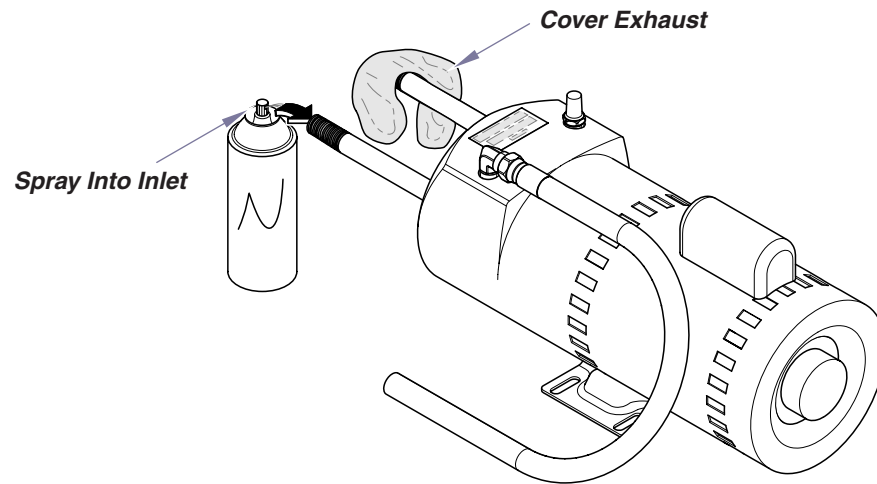
Endcap

AA212000

**WARNING**

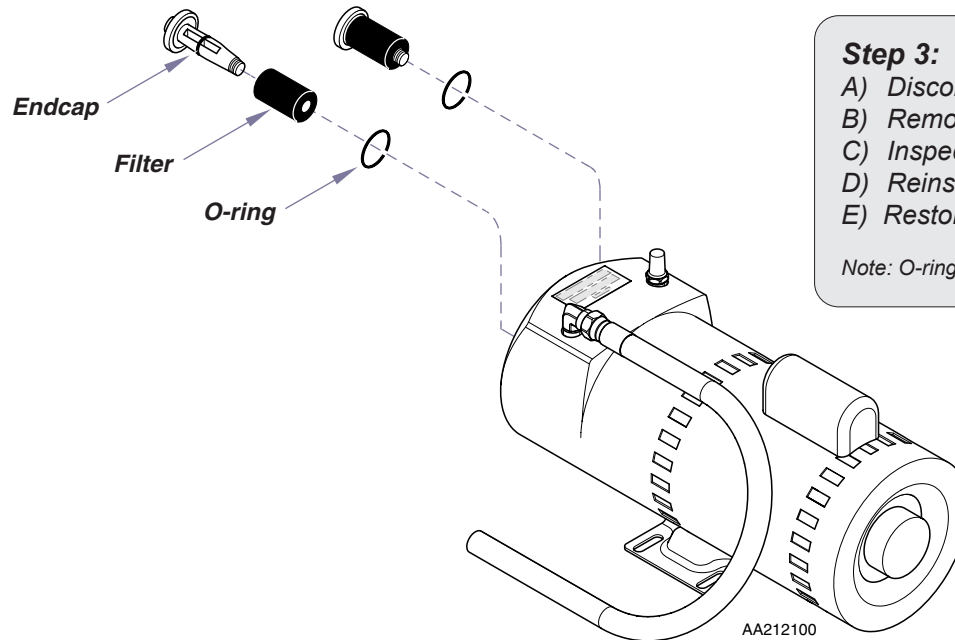
Use only Midmark Flushing Solvent 77000699.

Do not use kerosene or any other combustible solvent to flush pump.
Refer to product label on solvent container for other warnings.

**Step 2: Use Solvent to Flush Pump**

- A) Place towel over exhaust pipe to absorb solvent.
- B) Spray solvent into inlet pipe, 5-10 seconds.
Operate pump for one minute.

Note: Repeat procedure until desired performance is restored.

**Step 3: Remove Pipe Nipples & Install Filters/Endcaps .**

- A) Disconnect main power supply.
- B) Remove Steel Pipe Nipples.
- C) Inspect filters and O-rings, Clean or replace if necessary.
- D) Reinstall endcaps
- E) Restore power.

Note: O-rings should be soft and flexible.