

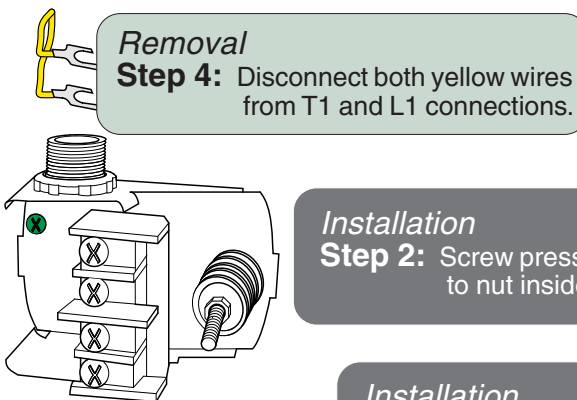
DANGER
Line voltage is present at the power inlet.

Step 1: Disconnect power to compressor.

Removal
Step 2: Remove electrical box cover and pressure switch cover.

Installation
Step 6: Connect power to compressor.

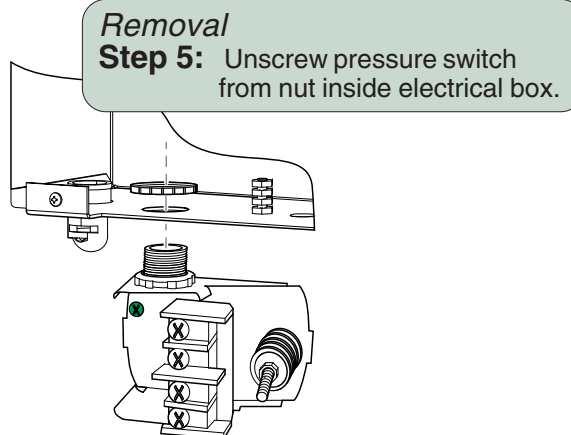
Installation
Step 5: Install pressure switch cover and electrical box cover.



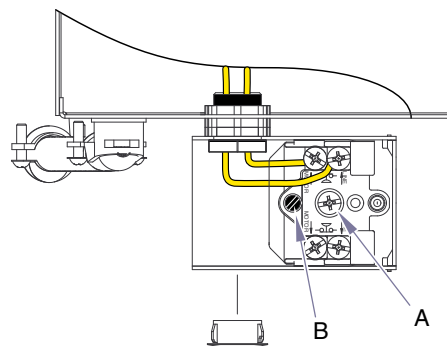
Removal
Step 4: Disconnect both yellow wires from T1 and L1 connections.

Installation
Step 2: Screw pressure switch tight to nut inside electrical box.

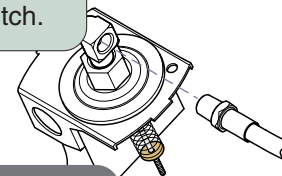
Installation
Step 3: Connect both yellow wires to T1 and L1 connections. Install conduit plug into bottom opening.



Removal
Step 5: Unscrew pressure switch from nut inside electrical box.

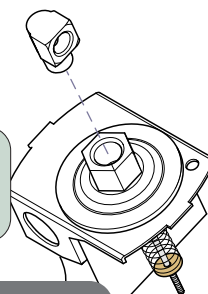


Removal
Step 3: Disconnect air line from elbow on back of pressure switch.



Installation
Step 4: Connect air line to elbow on back of pressure switch.

Removal
Step 6: Unscrew elbow from



Installation
Step 1: Screw elbow into new pressure switch.

Installation / Adjustment
Step 7: Turn Main Spring Adjustment Screw "A" clockwise to increase both Cut-In and Cut-Out pressure.

Turn Differential Pressure Adjustment Screw "B" clockwise to increase Cut-In pressure without affecting Cut-Out Pressure.

Set @ 80 PSI On/ 100 PSI Off.