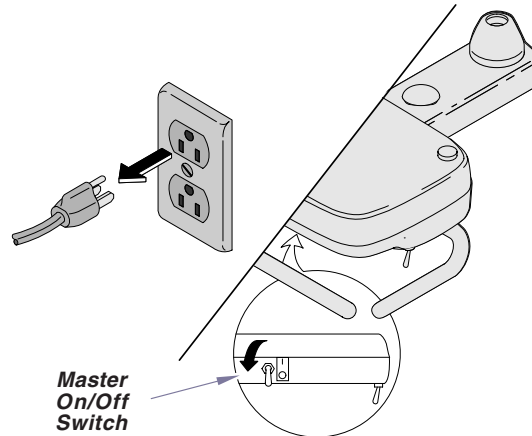


For Delivery Units Equipped w/ Remote Cuspidor Flush Button & 153314 Flush Button Kit Installation



CAUTION

Disconnect power cord from electrical outlet. Turn Master ON/OFF switch to the OFF position.



AF211901

Tubing Connections for Units Equipped with Remote Cuspidor Flush Button

NOTE:

This illustration explains the tubing connections necessary when installing delivery units equipped with a Remote Cuspidor Flush Button.

Go to the next page when adding a Remote Cuspidor Flush Button to an existing system.

Step 2: If connected, disconnect 1/8" Clear tubing from Delivery Head to J-box. Save uni-clamps for later use. (See A)

Step 4: Install the console side cover.

Step 1: Loosen thumbscrew and remove the console side cover.

1/8" Clear from Delivery Unit

Step 3: Install uni-clamp on 1/8" Clear tubing from Cuspidor and connect to 1/8" Clear tubing Delivery Head. (See B)

1/8" Clear from Cuspidor

1/8" Clear from J-box

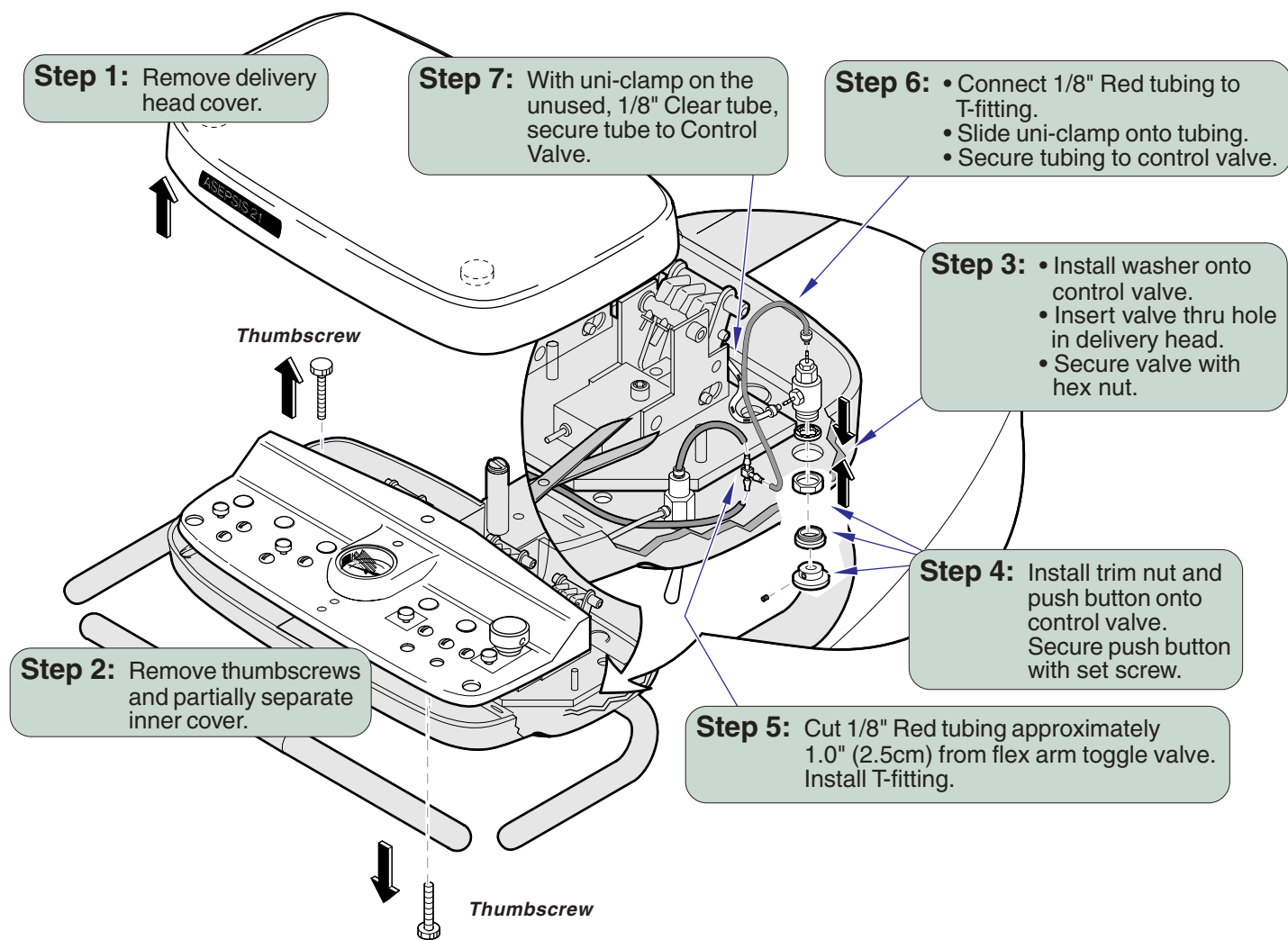
NOTE:

Leave 1/8" Clear tubing from J-box disconnected.

AF212001i

Installation of Remote Cuspidor Flush Button Kit (153314) to Existing System

Delivery Head Connections



AF211801

Cuspidor Connections

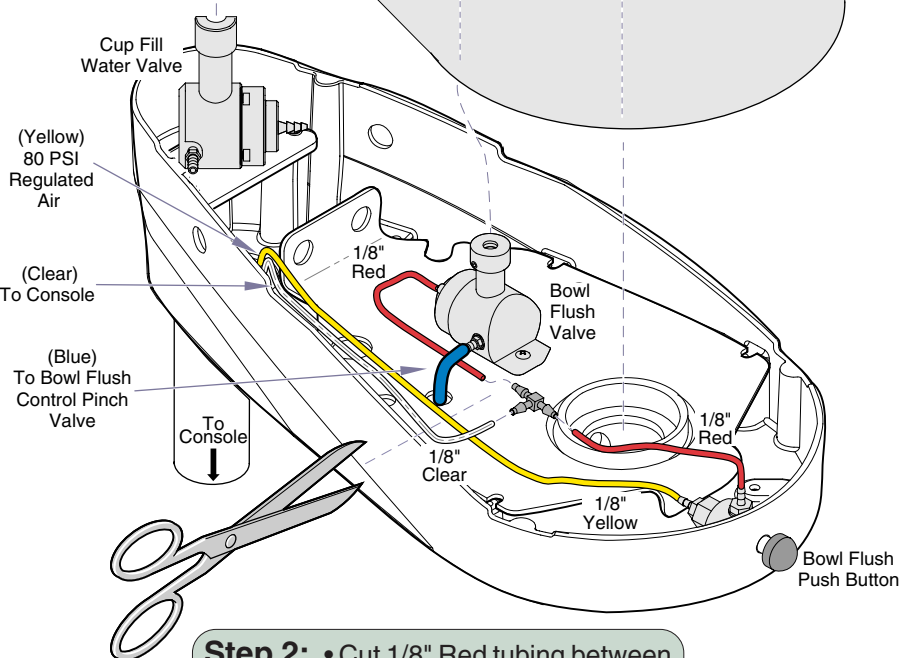
Step 1: Remove cuspidor bowl assembly.



Step 3: Connect 1/8" Clear tubing (supplied) to T-fitting. Feed Clear tubing down thru tube to Console.

NOTE:

Attaching the Clear tubing to a stiff wire will be helpful when feeding it down into the Console.

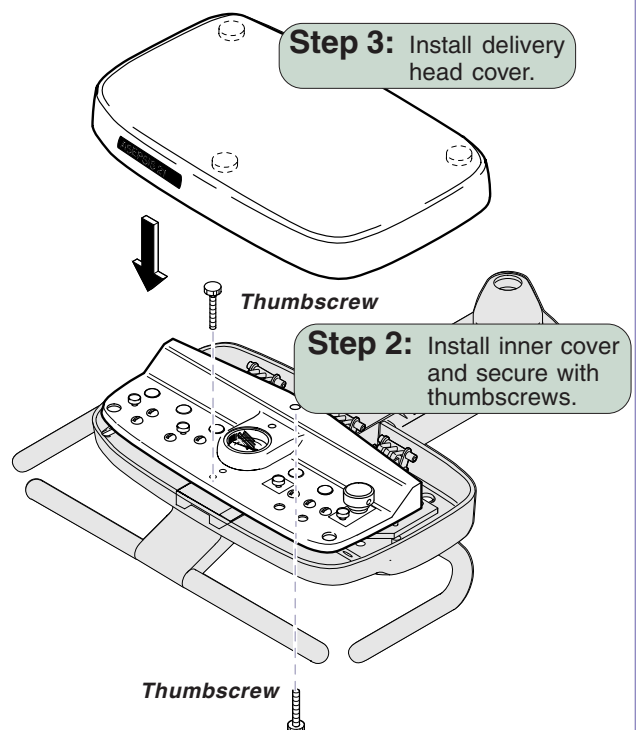
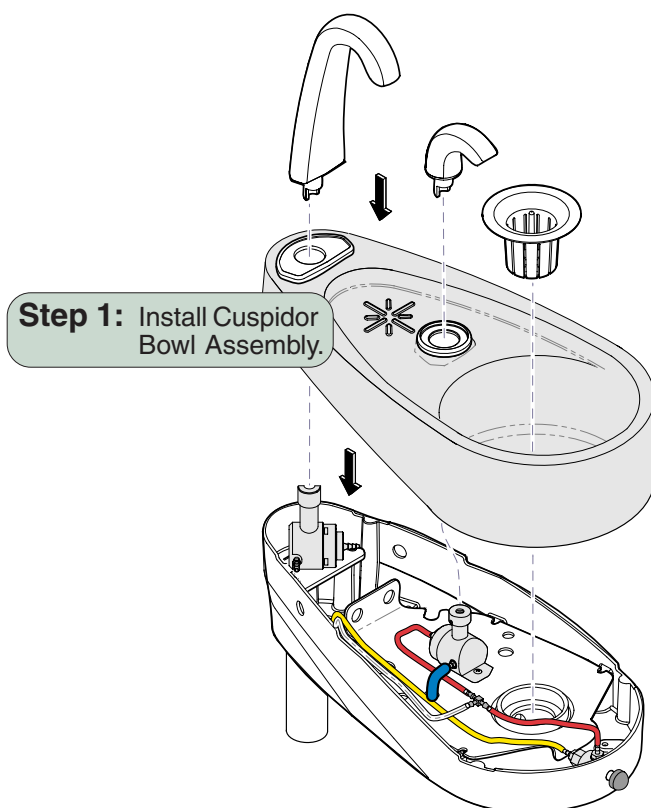
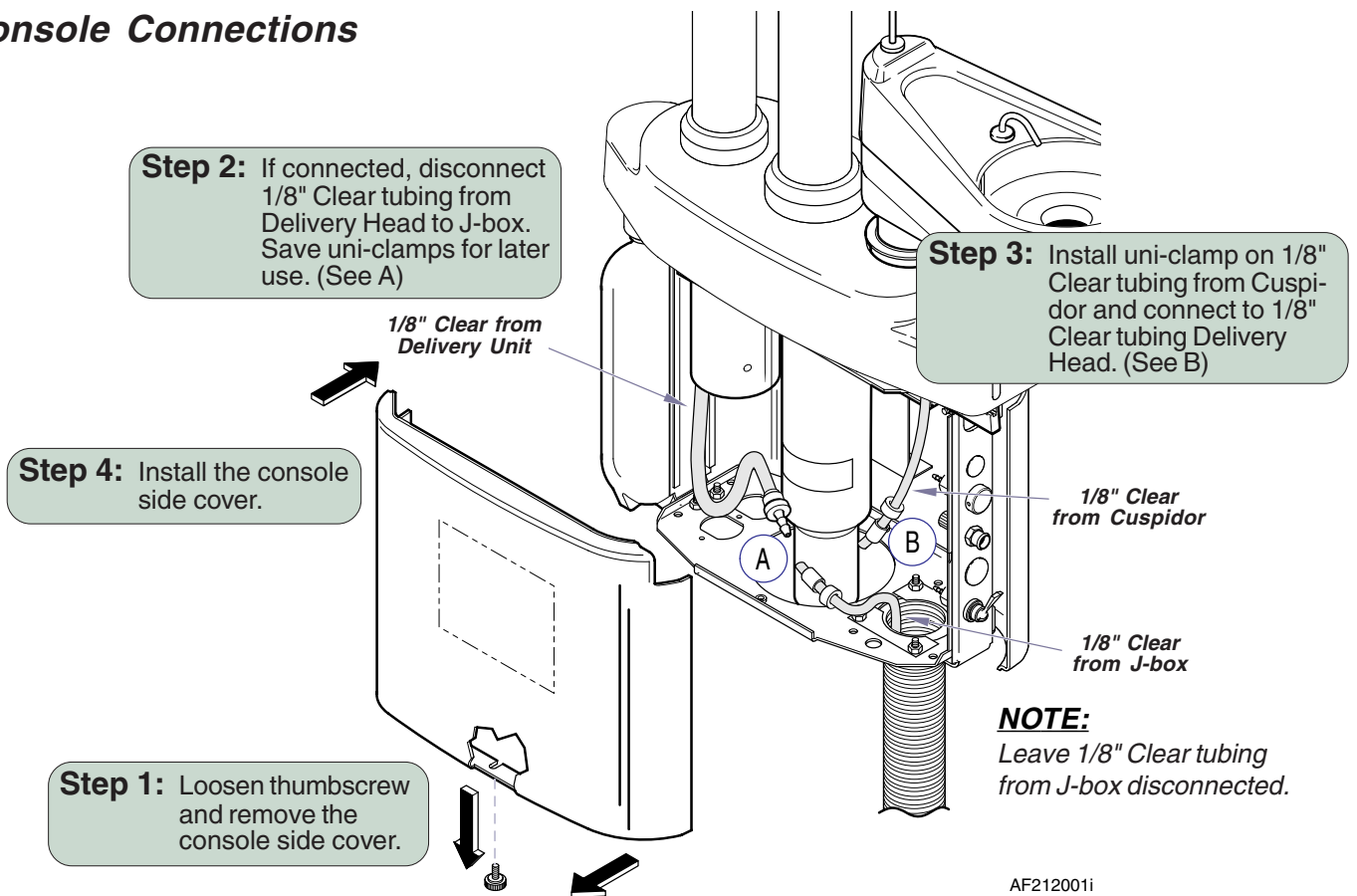


Step 2:

- Cut 1/8" Red tubing between Bowl Flush Valve and Bowl Flush Push Button.
- Install T-fitting.

DA176400i

Console Connections



DA176500i